

OPERATOR: **Extraction Oil & Gas**

WELL NAME: **Trott 8E-10-3N**

FIELD NAME: DJ Basin - Wattenberg

DRILLING RIG: Patterson 346

API #: 05-123-45709

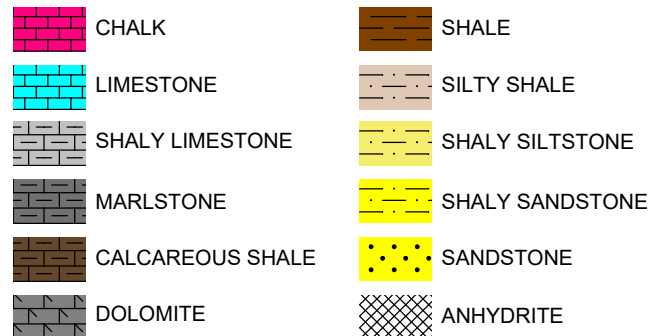
LAT/LONG: 40.324433, -105.040879  
SURFACE HOLE: NESE S7-T4N-R68W, 1550' FSL, 1110' FEL  
BOTTOM HOLE: S8-T4N-R68W, 2455' FNL, 460' FEL



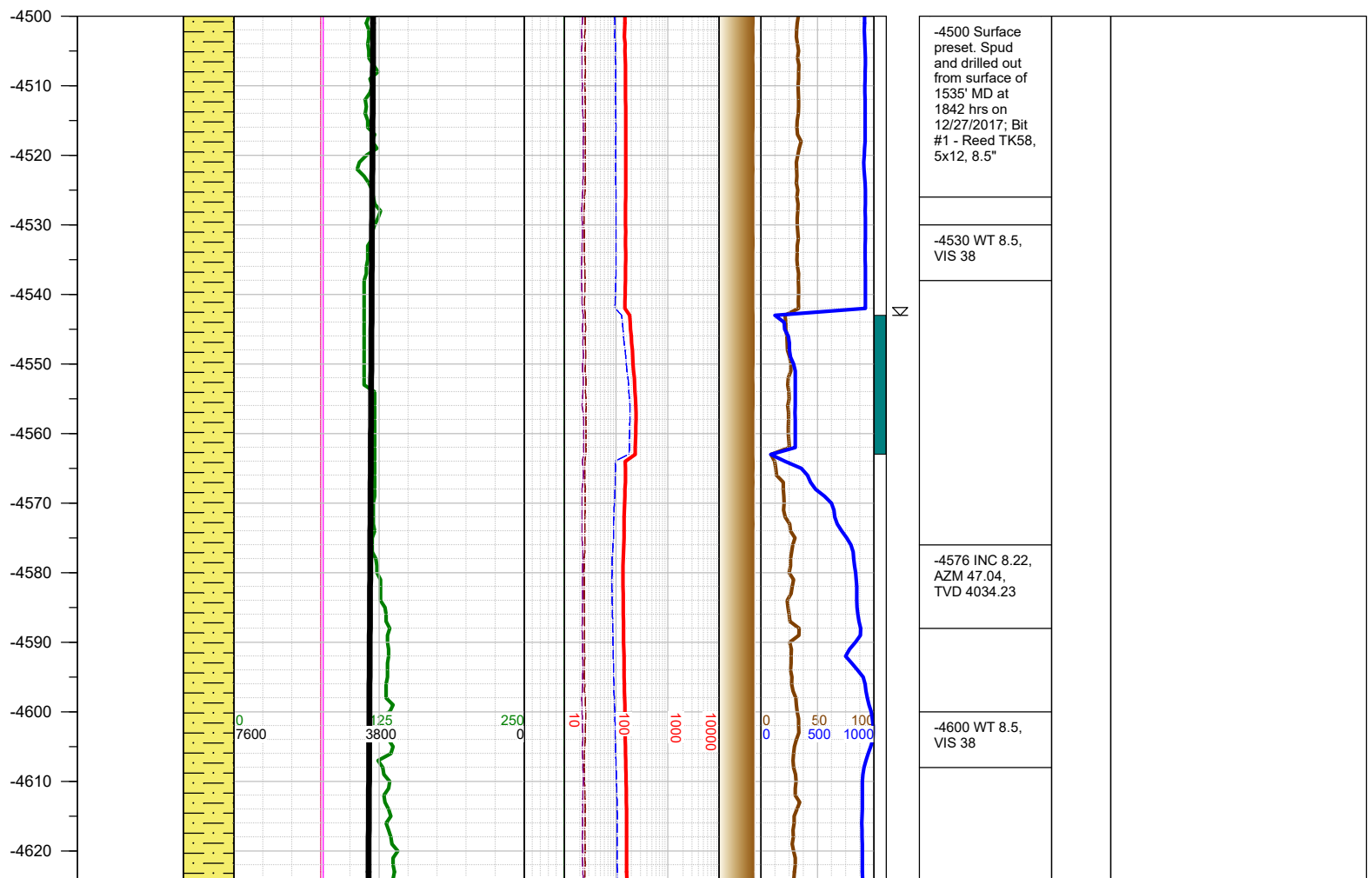
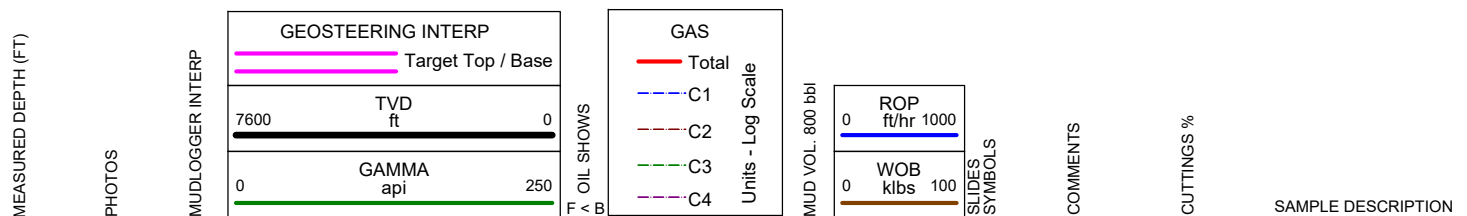
Earth Science Agency, LLC

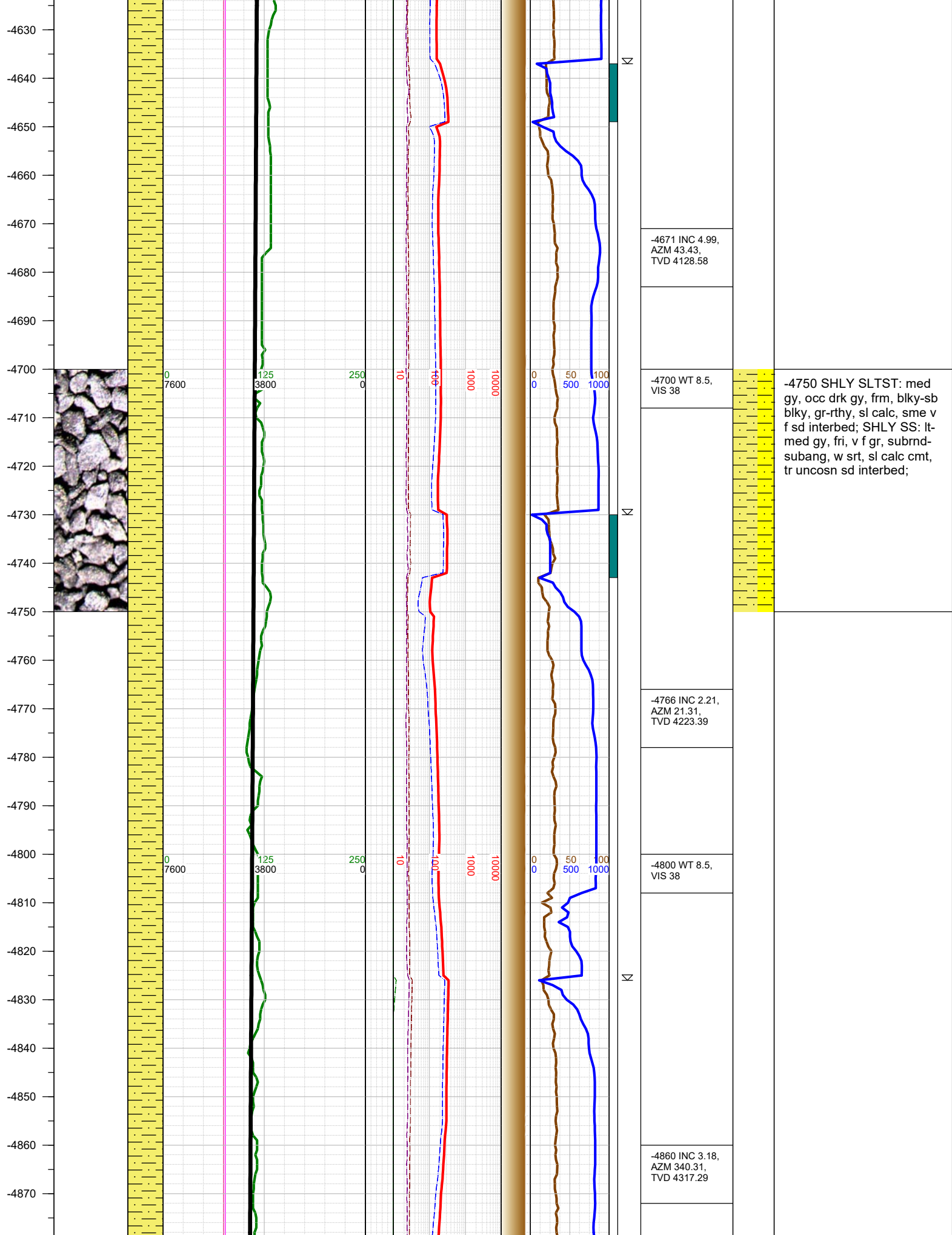
COUNTY: Weld  
STATE: Colorado  
GROUND ELEVATION: 5035'  
KELLY BUSHING: 5060'  
DRILLING FLUID: OBM  
TVD VS. MD: 6217' / 10560'  
SPUD DATE: December 27, 2017  
TD DATE: December 29, 2017  
DEPTHS LOGGED: 4500' - 10560'  
DATES LOGGED: December 28, 2017 - December 29, 2017  
GEOLOGISTS: Joe Coon, Brian Whitfield  
SCALE: 5" = 100'

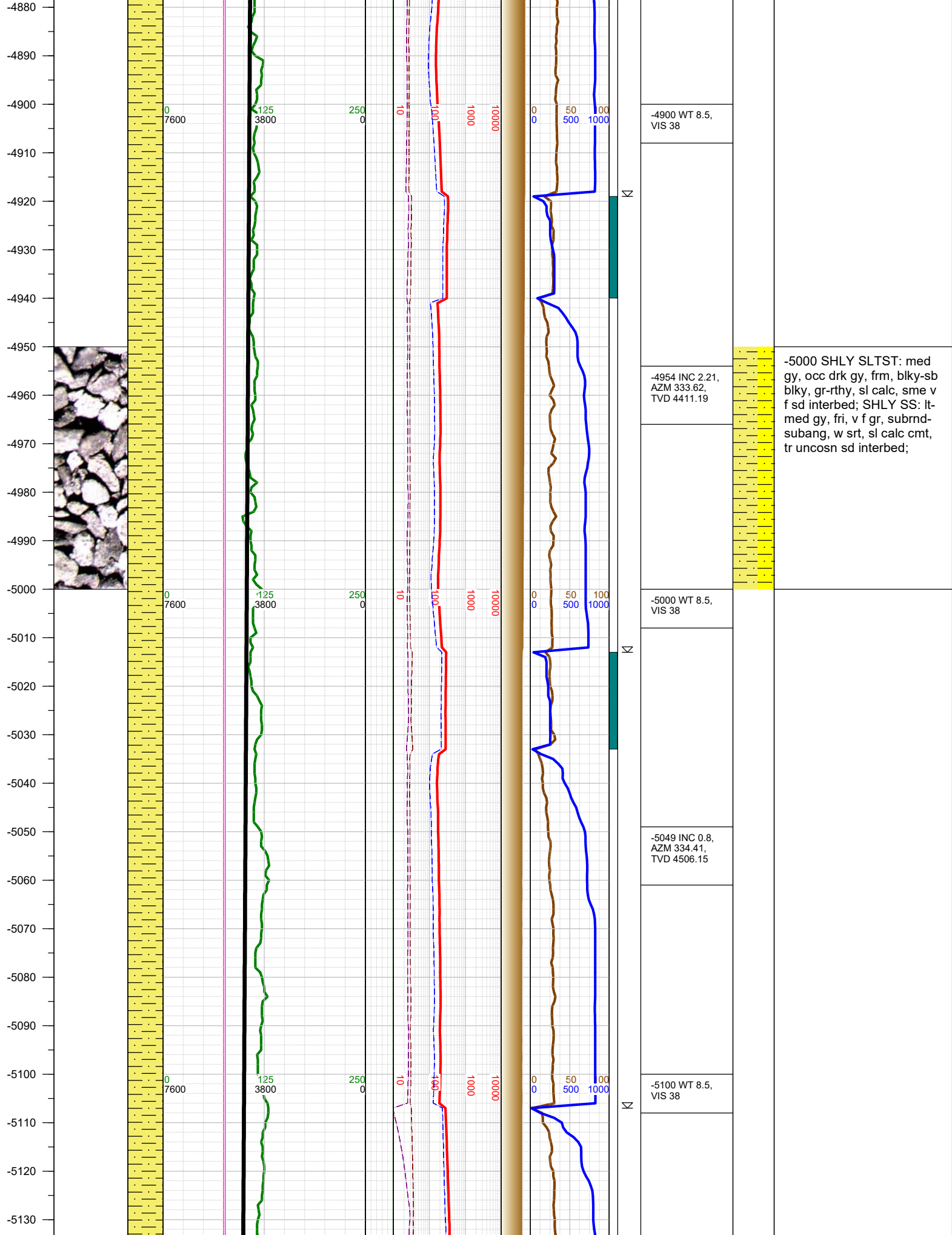
#### LEGEND

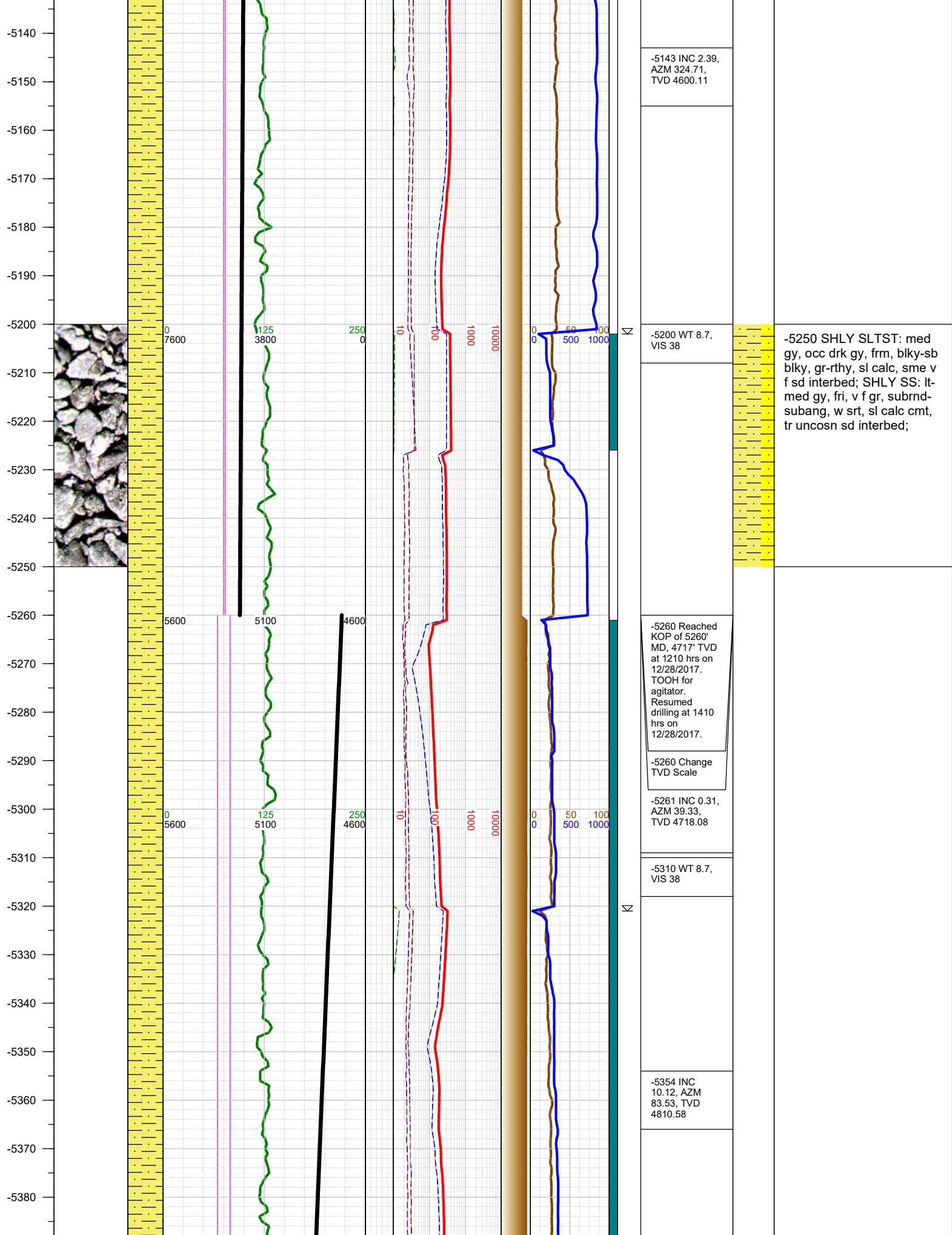


FORMATION CONNECTION MIDNIGHT NEW BIT GAS SHOW FAULT

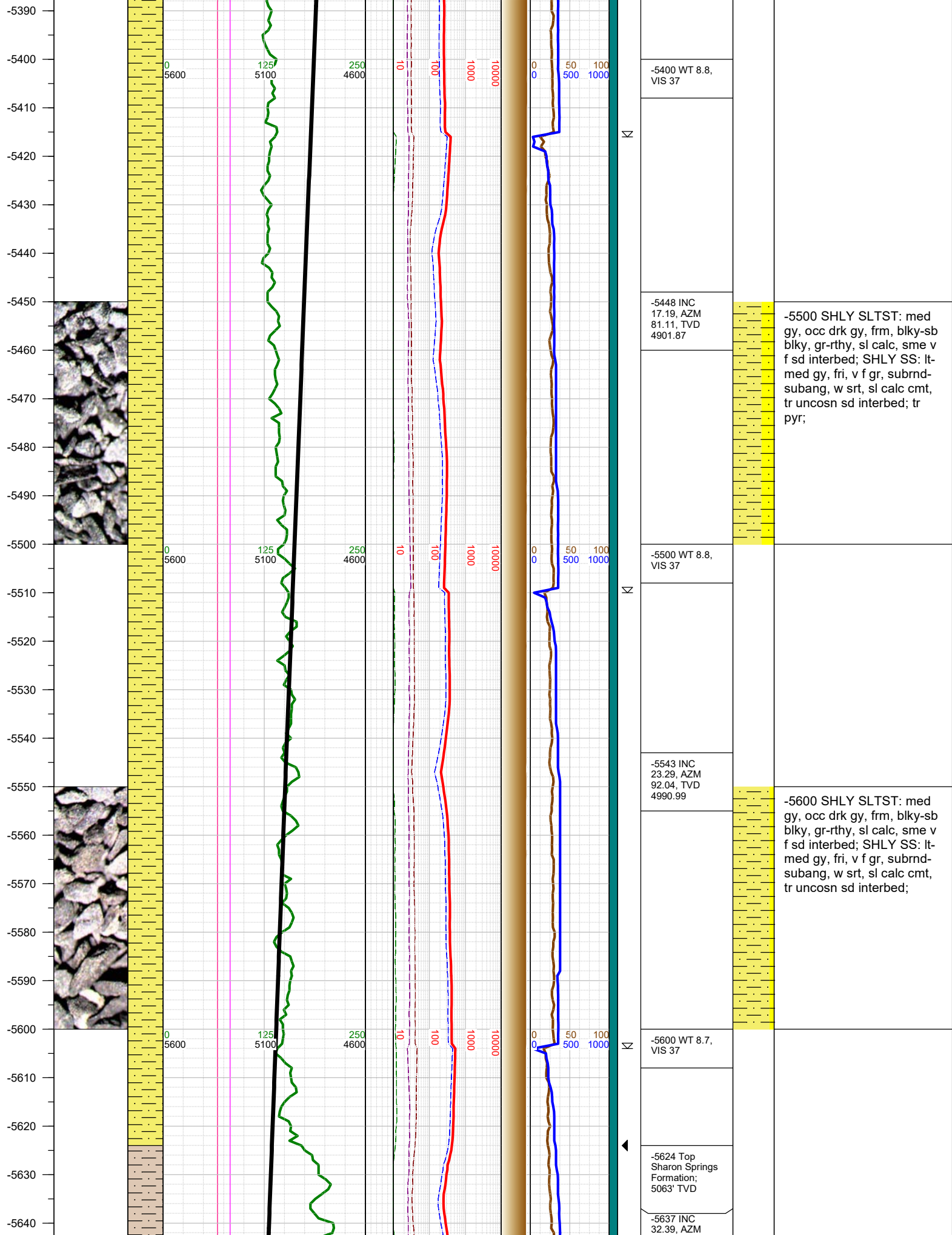


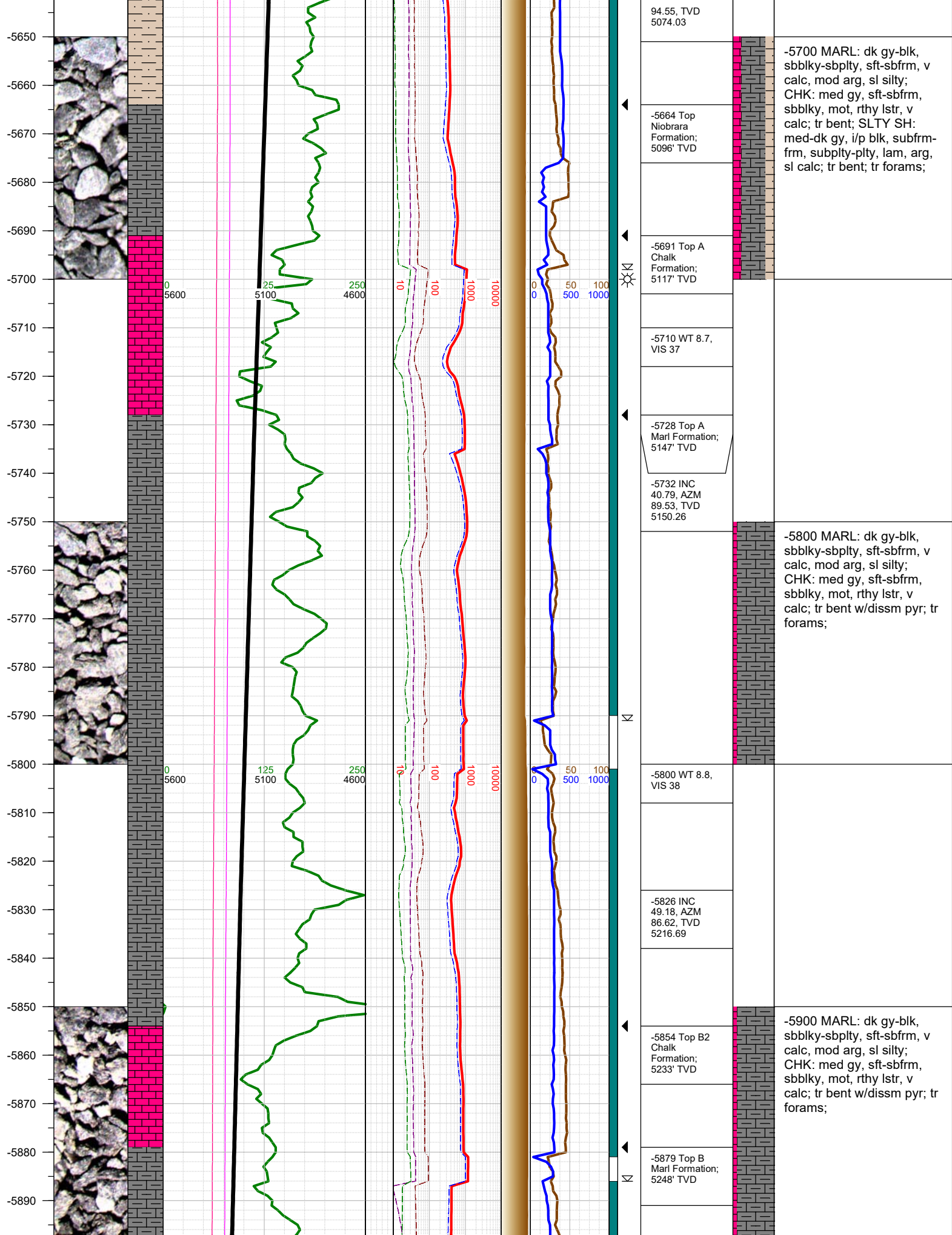


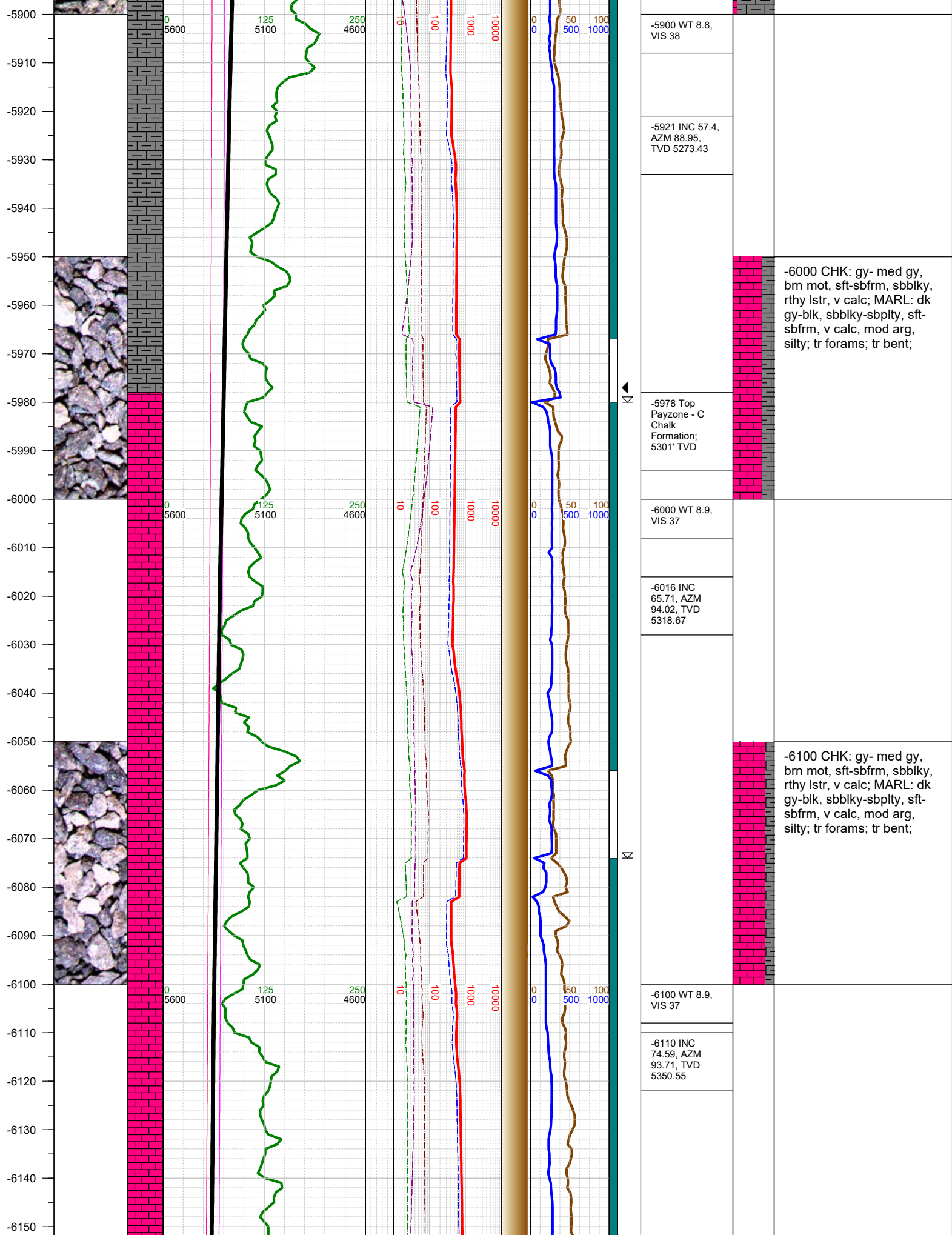




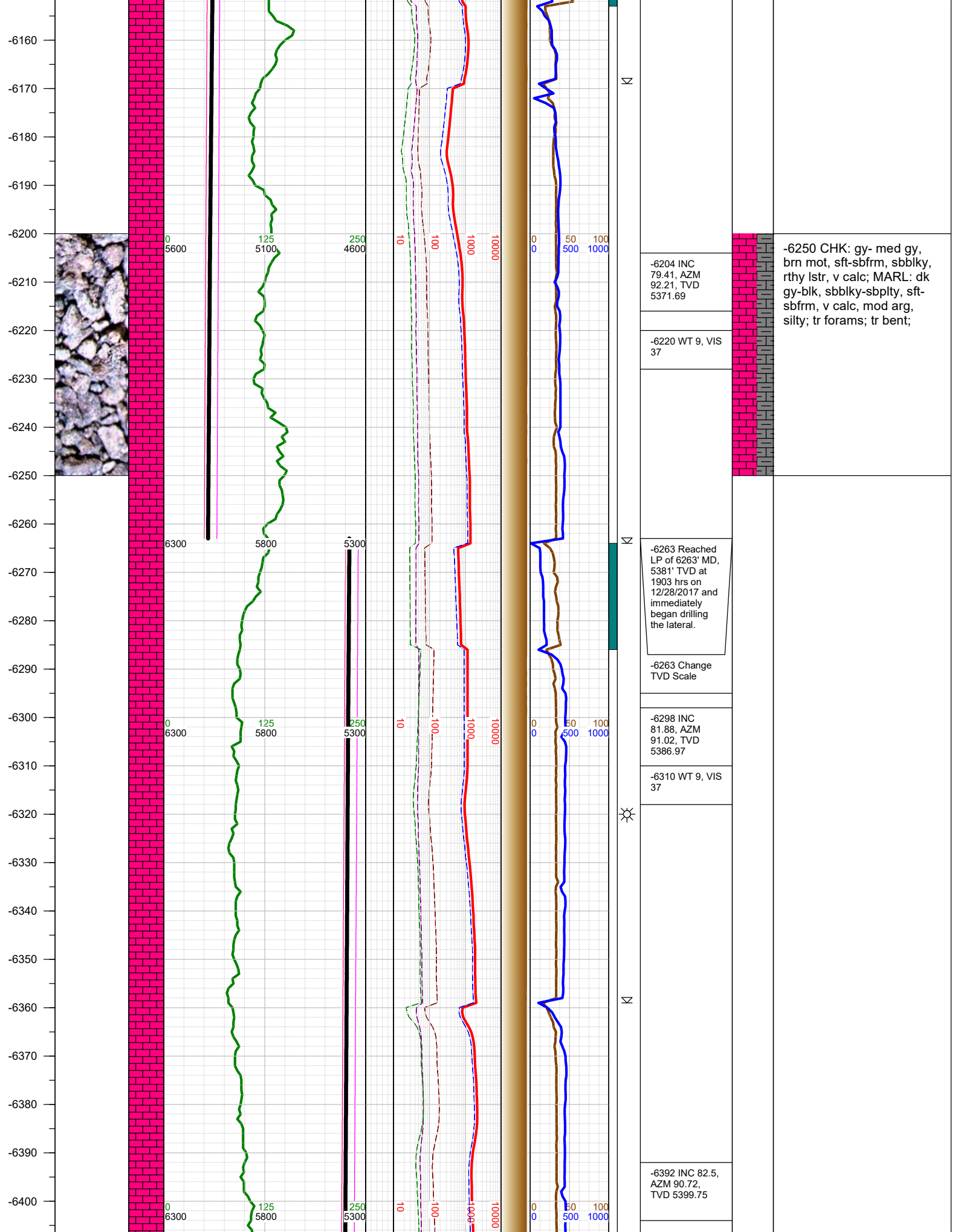




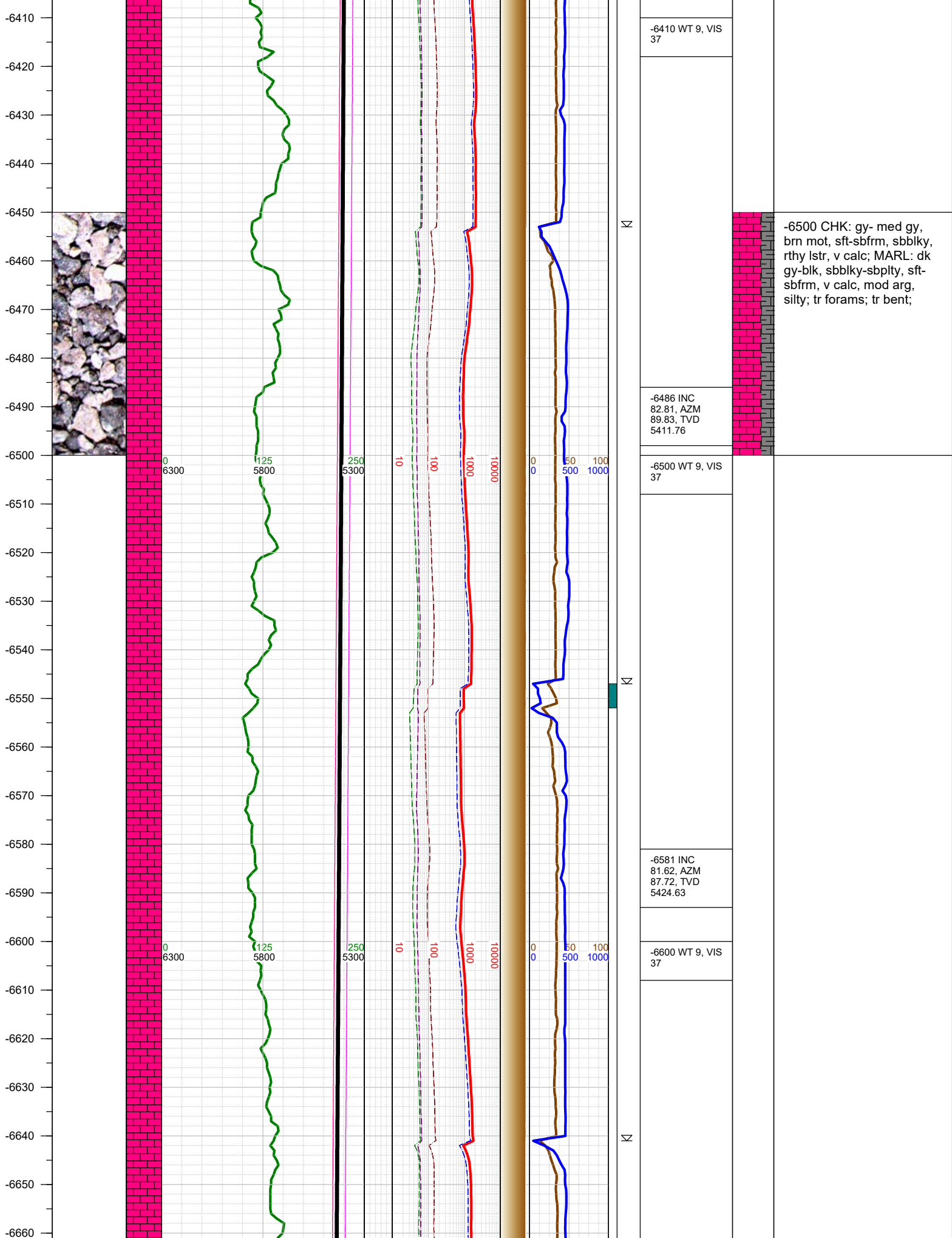


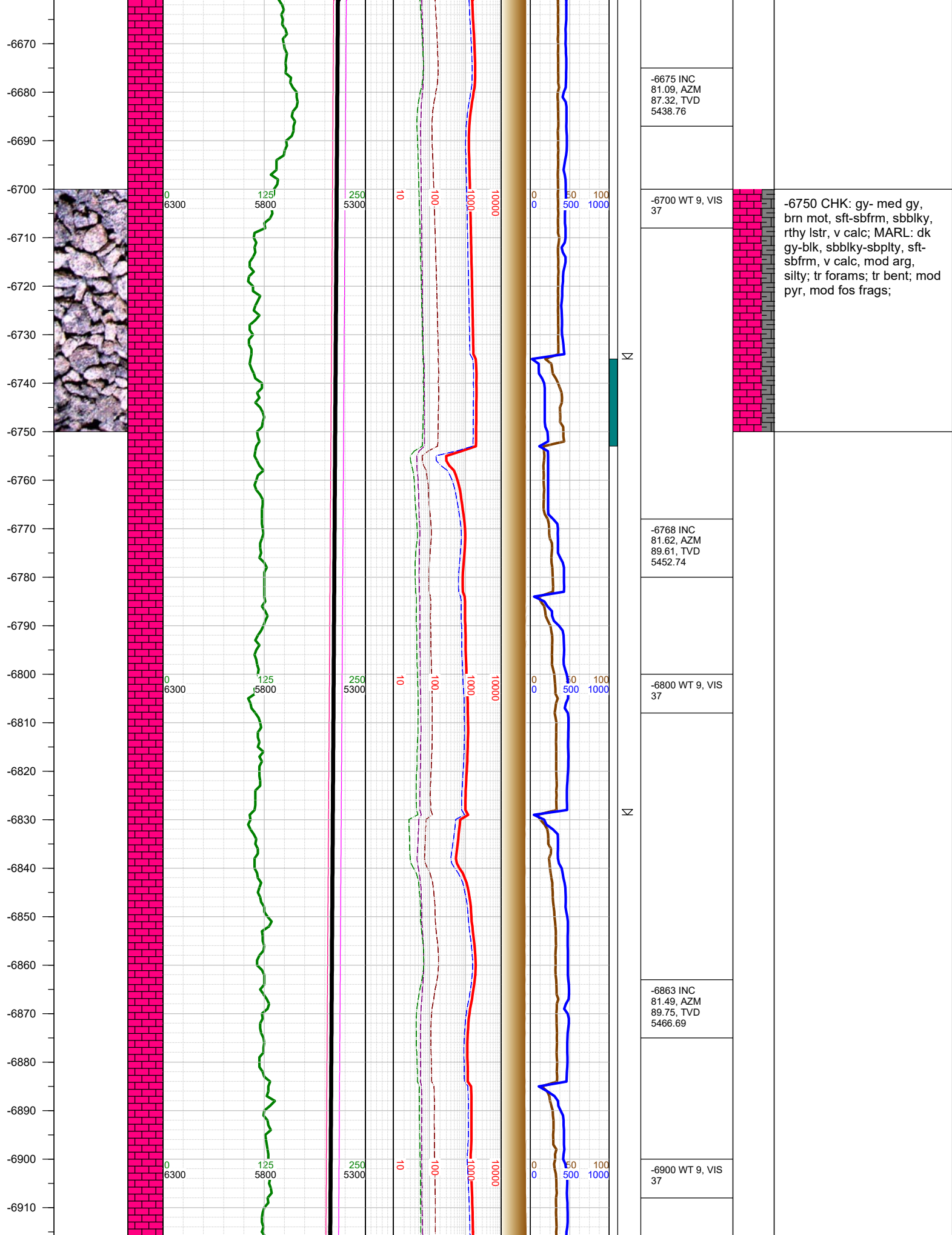




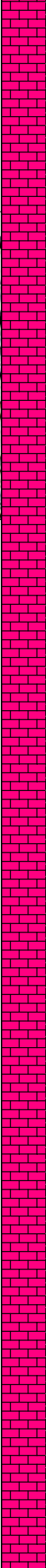
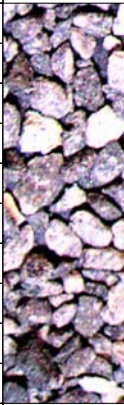








-6920  
-6930  
-6940  
-6950  
-6960  
-6970  
-6980  
-6990  
-7000  
-7010  
-7020  
-7030  
-7040  
-7050  
-7060  
-7070  
-7080  
-7090  
-7100  
-7110  
-7120  
-7130  
-7140  
-7150  
-7160  
-7170



0  
6300

125  
5800

250  
5300

10

100

1000

10000

0  
0

50  
500

100  
1000

N

N

N

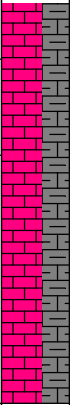
-6957 INC  
81.49, AZM  
91.51, TVD  
5480.6

-7000 WT 9, VIS  
37

-7051 INC  
81.88, AZM  
89.75, TVD  
5494.2

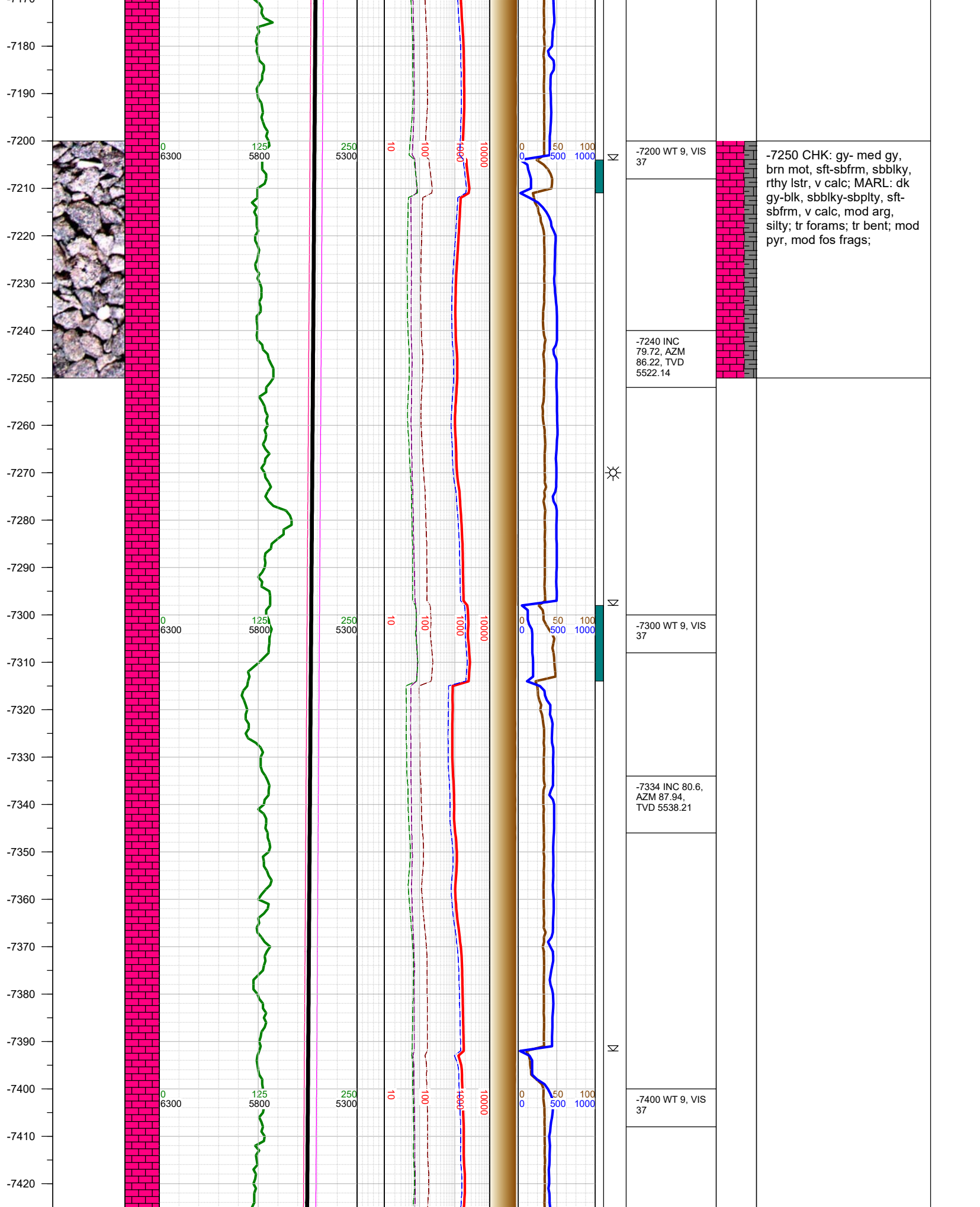
-7100 WT 9, VIS  
37

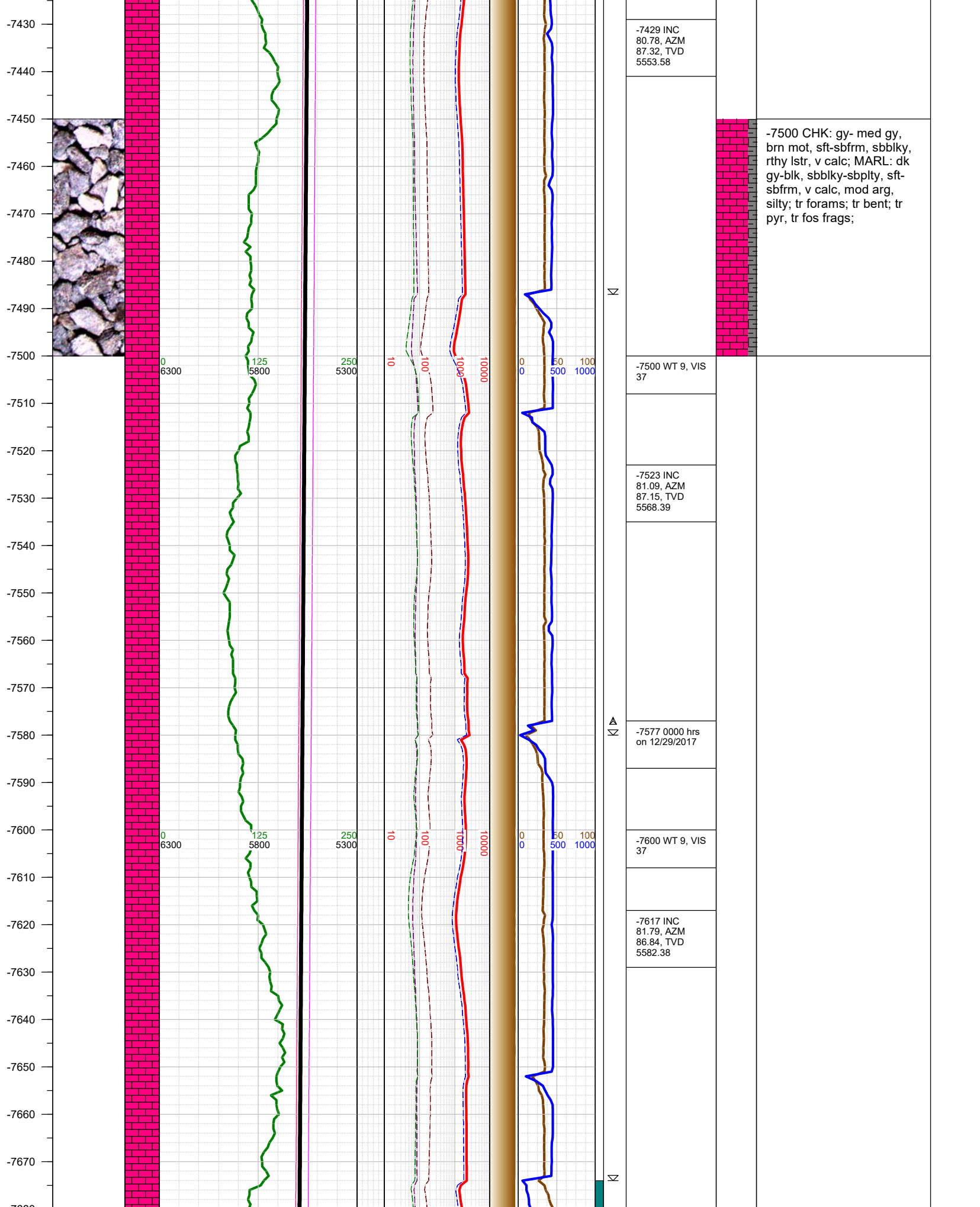
-7146 INC  
82.19, AZM  
88.91, TVD  
5507.36



-7000 CHK: gy- med gy,  
brn mot, sft-sbfrm, sbblky,  
rthy lstr, v calc; MARL: dk  
gy-blk, sbblky-sbplty, sft-  
sbfrm, v calc, mod arg,  
silty; tr forams; tr bent; mod  
pyr, mod fos frags;







-7429 INC  
80.78, AZM  
87.32, TVD  
5553.58

-7500 CHK: gy- med gy,  
brn mot, sft-sbfrm, sbblky,  
rthy lstr, v calc; MARL: dk  
gy-blk, sbblky-sbply, sft-  
sbfrm, v calc, mod arg,  
silty; tr forams; tr bent; tr  
pyr, tr fos frags;

-7500 WT 9, VIS  
37

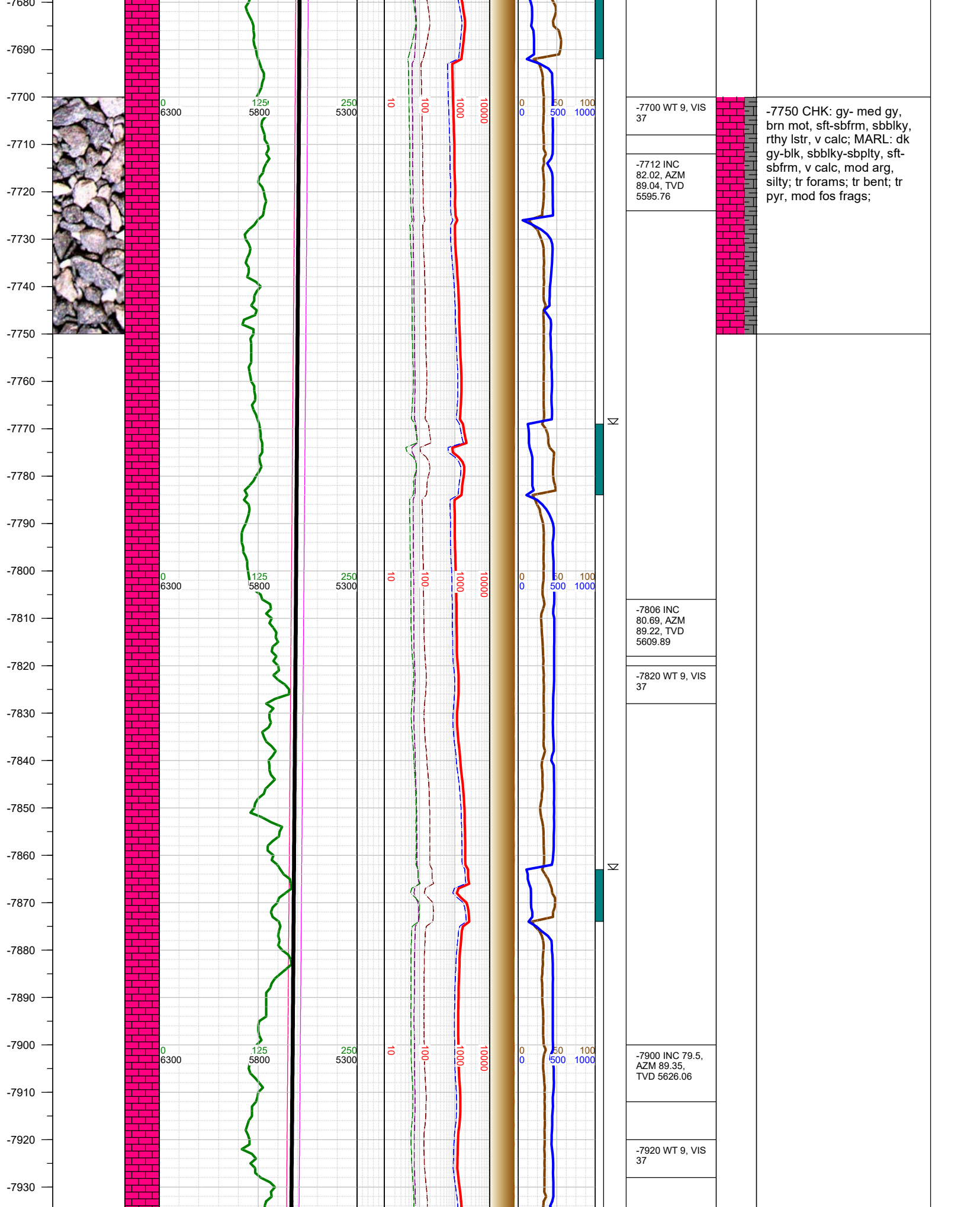
-7523 INC  
81.09, AZM  
87.15, TVD  
5568.39

▲  
Σ

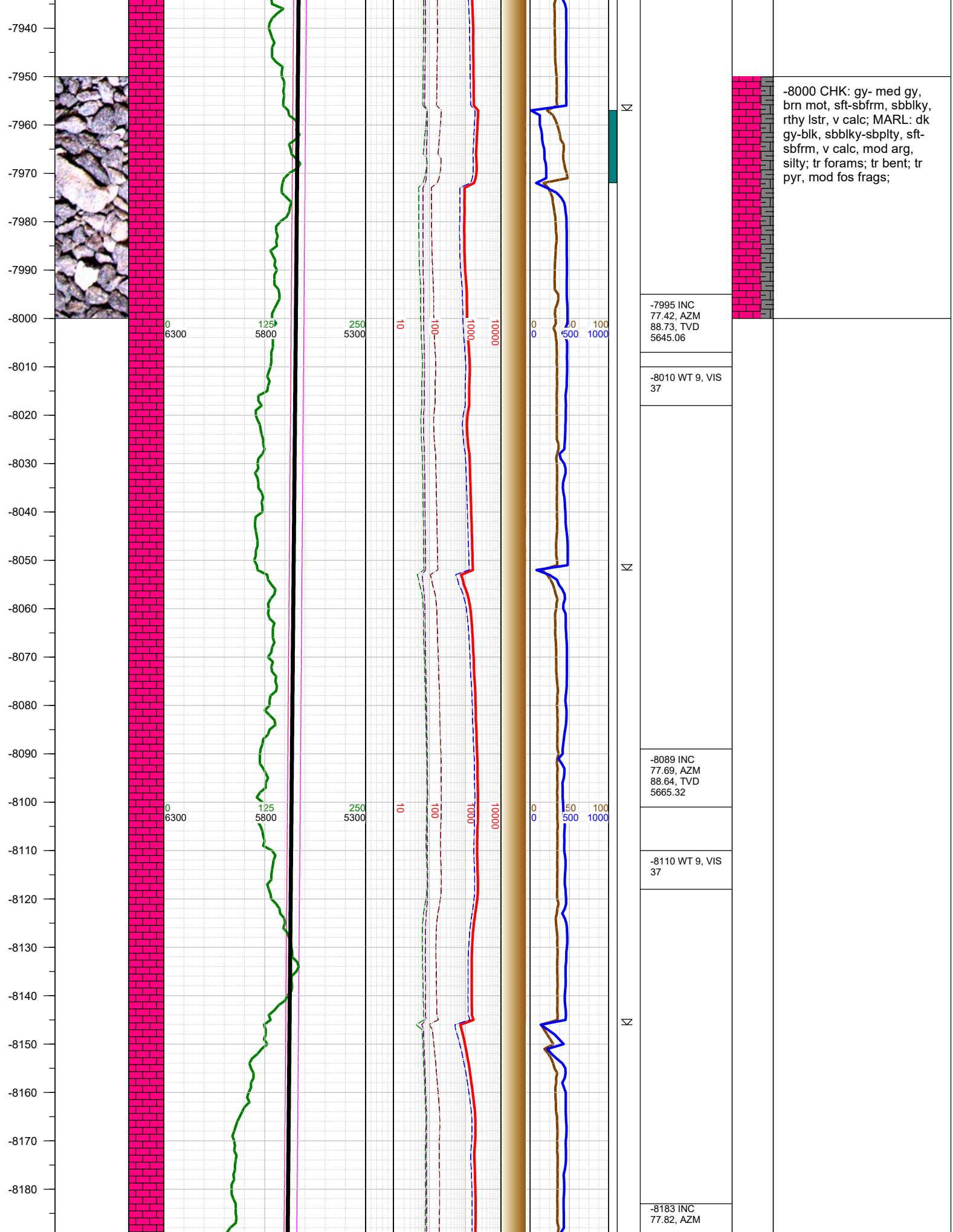
-7577 0000 hrs  
on 12/29/2017

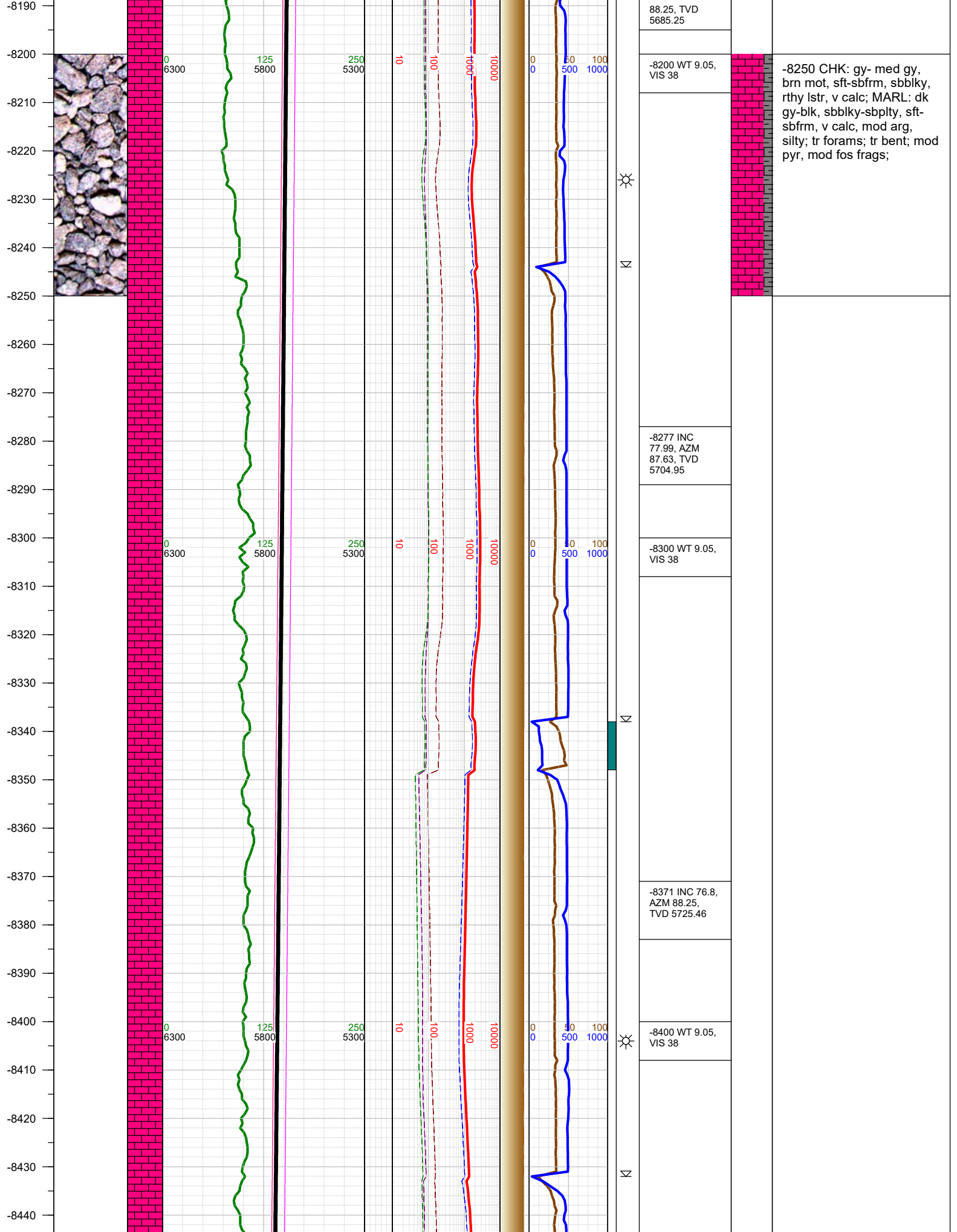
-7600 WT 9, VIS  
37

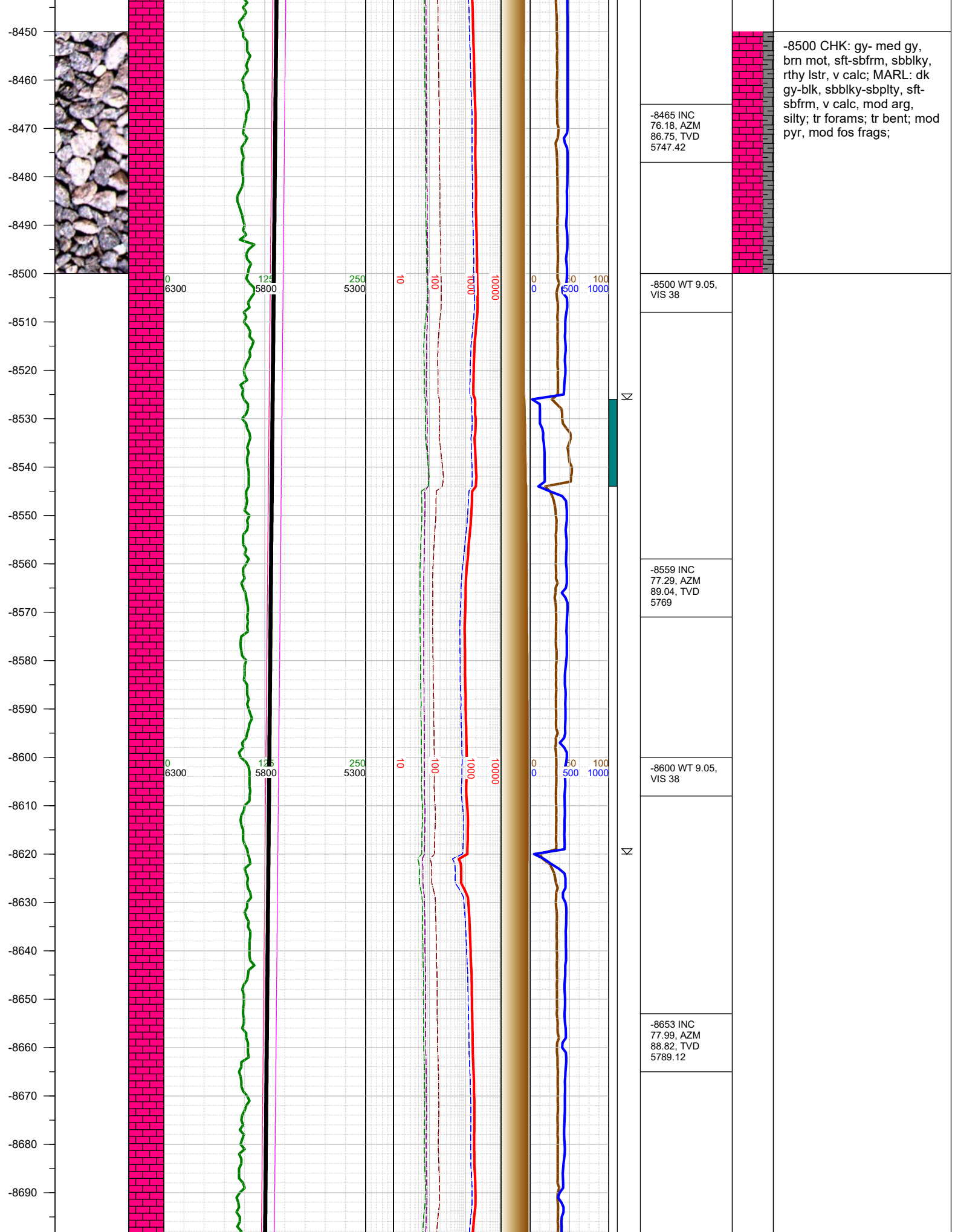
-7617 INC  
81.79, AZM  
86.84, TVD  
5582.38



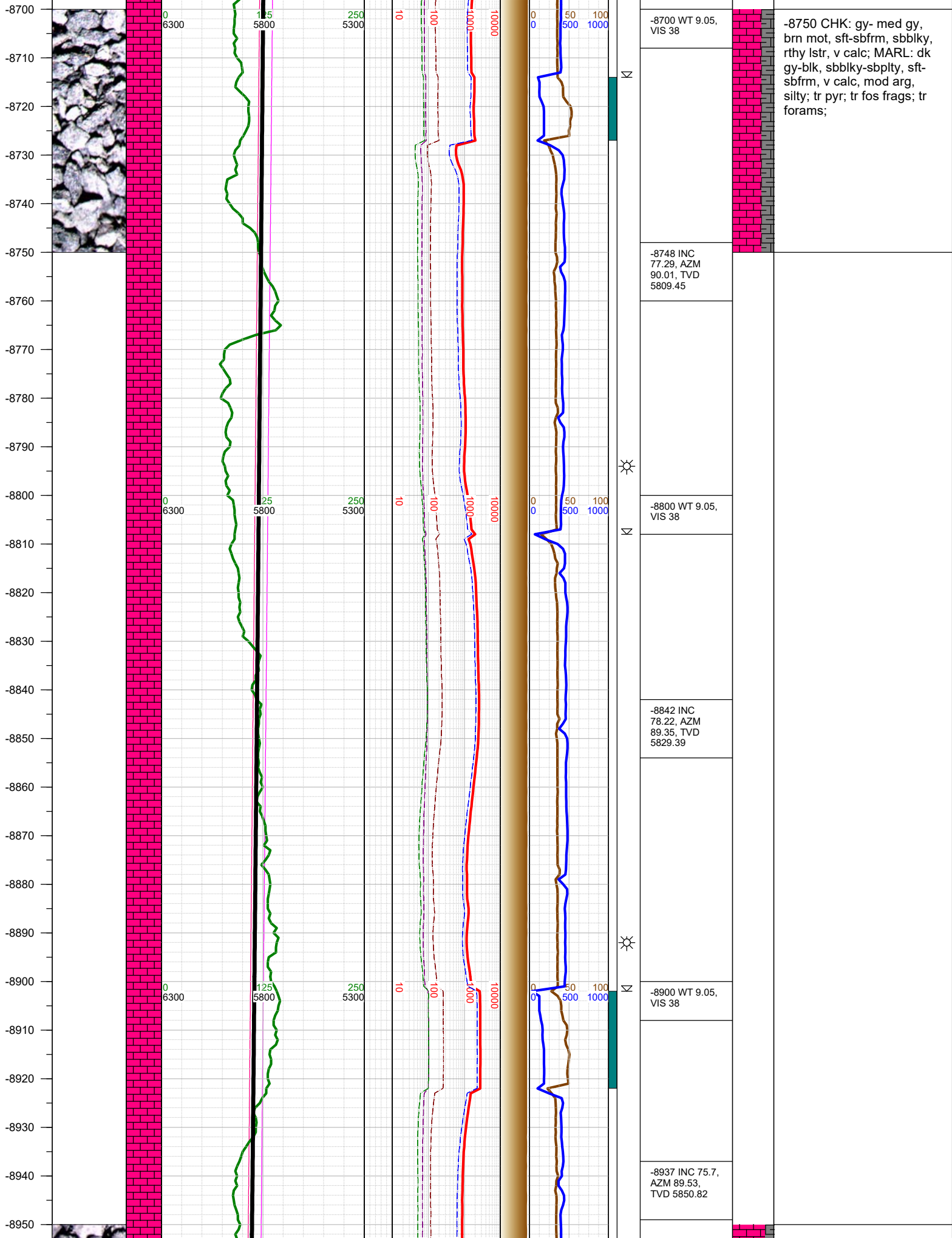




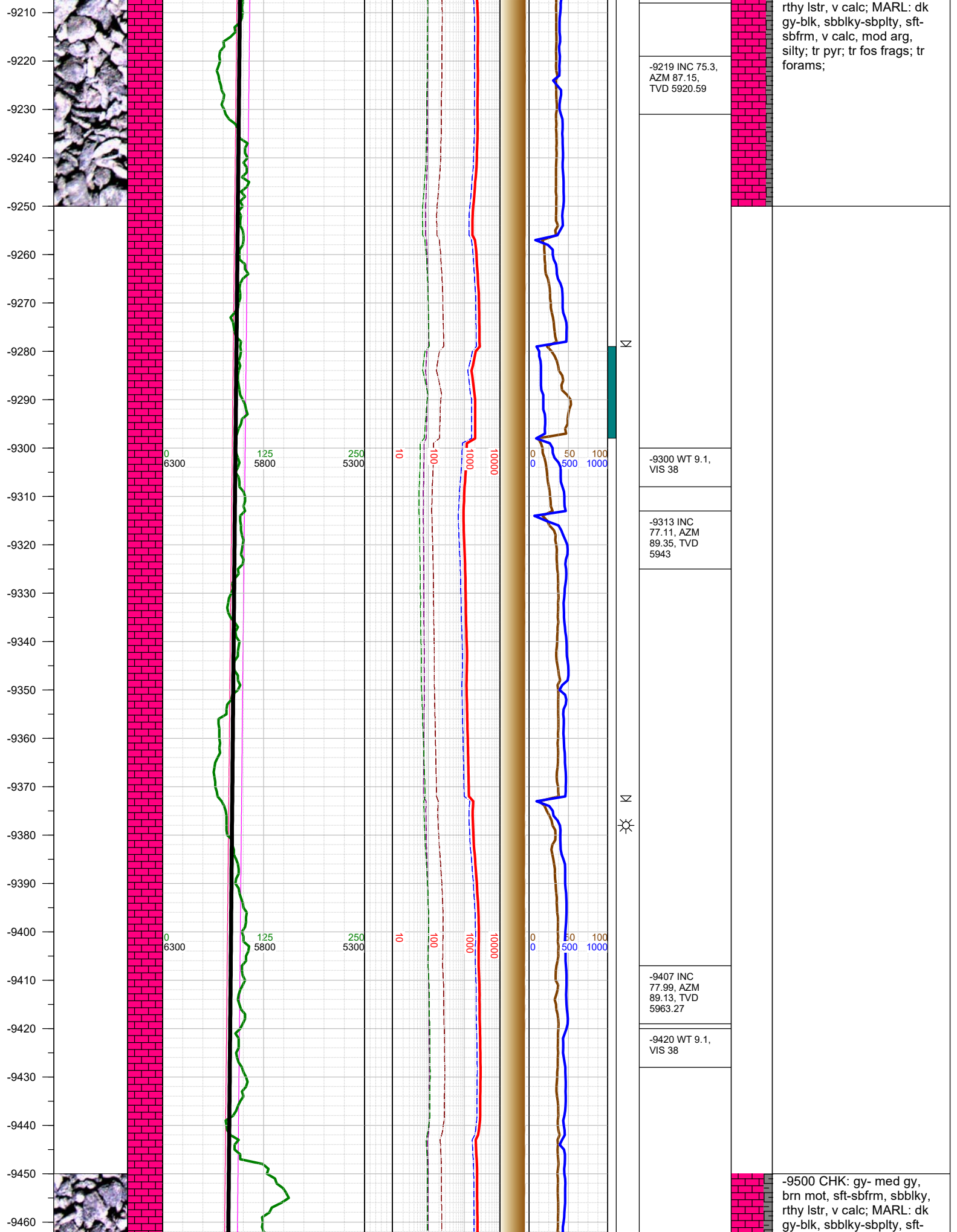




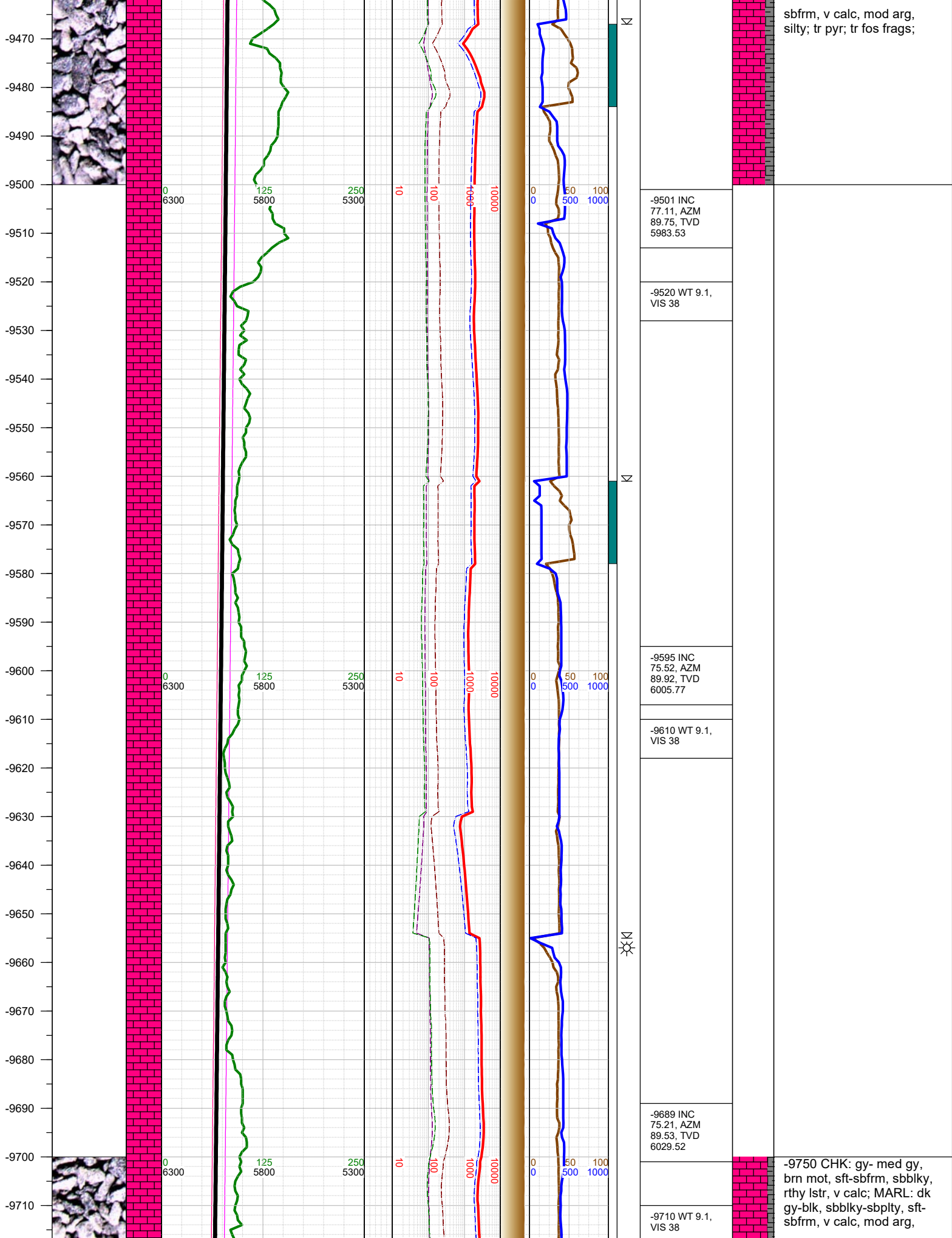




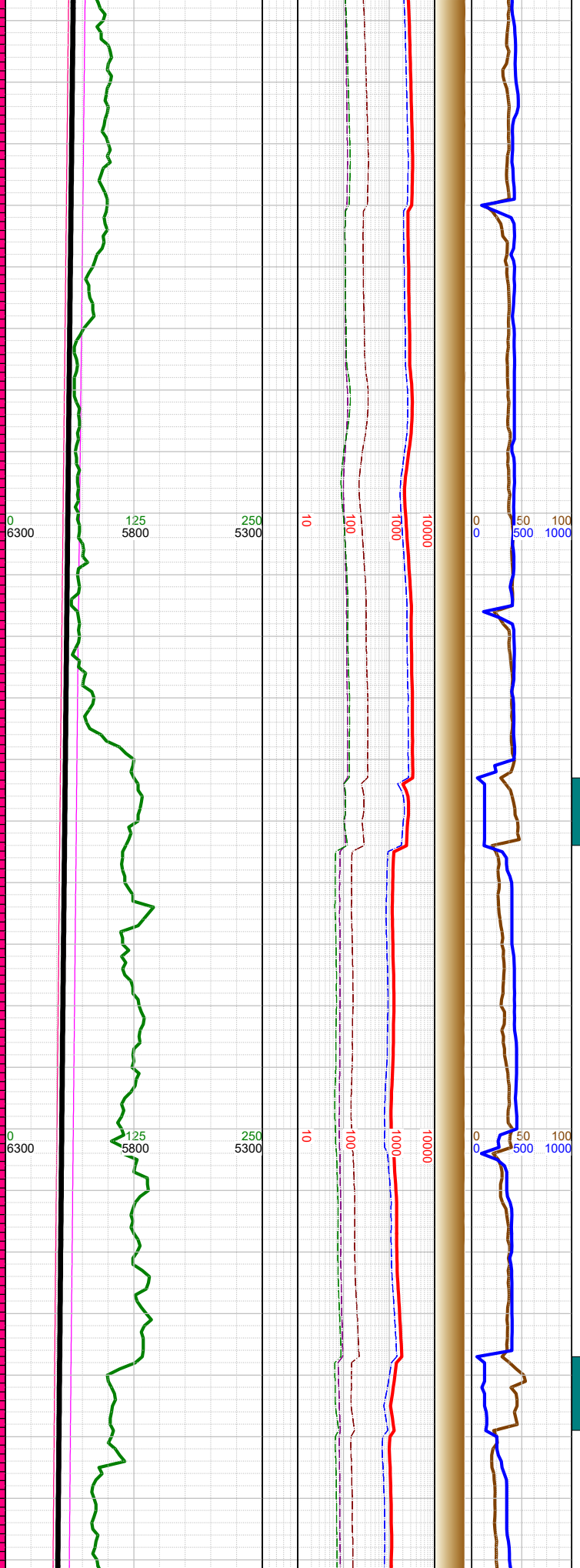
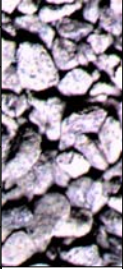








-9720  
-9730  
-9740  
-9750  
-9760  
-9770  
-9780  
-9790  
-9800  
-9810  
-9820  
-9830  
-9840  
-9850  
-9860  
-9870  
-9880  
-9890  
-9900  
-9910  
-9920  
-9930  
-9940  
-9950  
-9960  
-9970

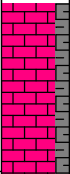
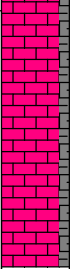


K

K

K

|  |
|--|
|  |
| -9782 INC<br>75.39, AZM<br>89.75, TVD<br>6053.12 |
| -9800 WT 9.1,<br>VIS 38                          |
|  |
| -9877 INC<br>76.71, AZM<br>90.85, TVD<br>6076.03 |
| -9900 WT 9.1,<br>VIS 38                          |
|  |



silty; tr pyr; tr fos frags; tr  
forams;

-10000 CHK: gy- med gy,  
brn mot, sft-sbfrm, sbblky,  
rthy lstr, v calc; MARL: dk  
gy-blk, sbblky-sbplty, sft-  
sbfrm, v calc, mod arg,  
silty; tr bent w/dssm pyr; tr  
fos frags; tr forams;

