

Extraction Oil & Gas  
Project: Weld County, CO (NAD83)  
Site: TROTT Pad  
Well: TROTT 8E-10- 3N  
Wellbore: Wellbore #1  
Plan: Plan#2 (TROTT 8E-10- 3N/Wellbore #1)  
P 346

WELL DETAILS: TROTT 8E-10- 3N

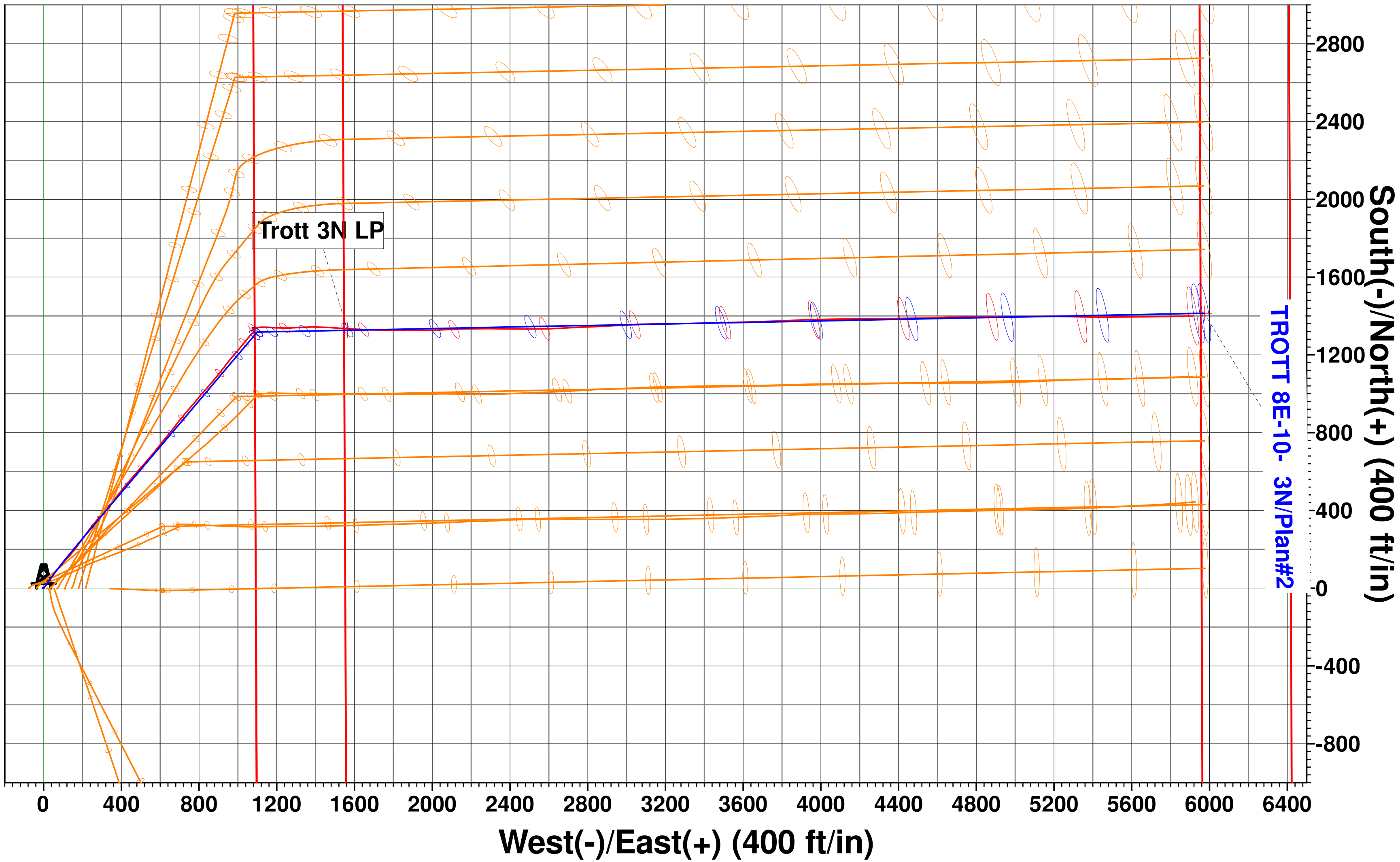
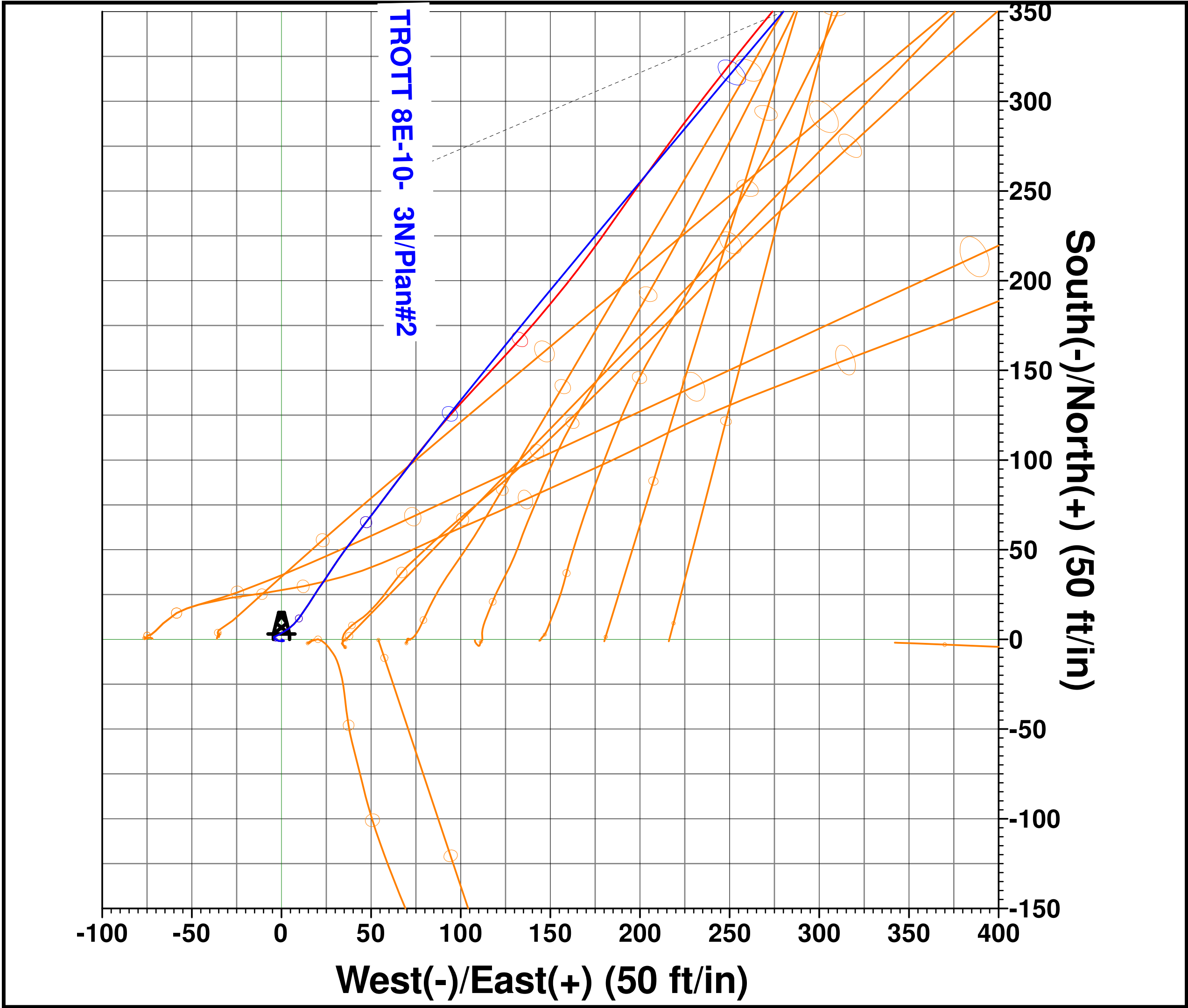
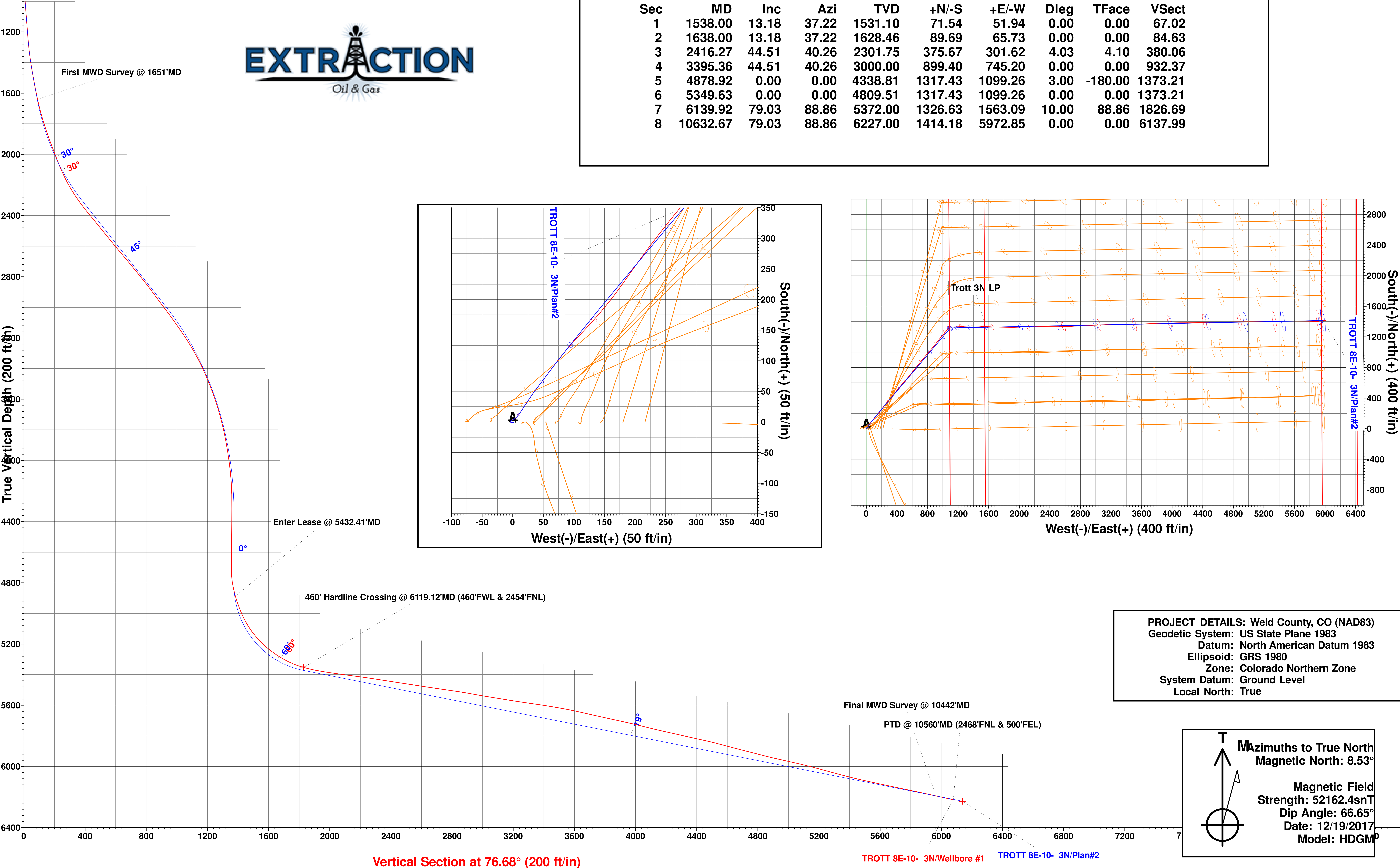
Ground Elevation:: 5035.00  
RKB Elevation: KB=25' @ 5060.00ft (P 346)  
Rig Name: P 346

Northing 1361363.18      Easting 3128011.91      Latitude 40.324433      Longitude -105.040879



Planned Section Details

Sec	MD	Inc	Azi	TVD	+N/-S	+E/-W	Dleg	TFace	VSect
1	1538.00	13.18	37.22	1531.10	71.54	51.94	0.00	0.00	67.02
2	1638.00	13.18	37.22	1628.46	89.69	65.73	0.00	0.00	84.63
3	2416.27	44.51	40.26	2301.75	375.67	301.62	4.03	4.10	380.06
4	3395.36	44.51	40.26	3000.00	899.40	745.20	0.00	0.00	932.37
5	4878.92	0.00	0.00	4338.81	1317.43	1099.26	3.00	-180.00	1373.21
6	5349.63	0.00	0.00	4809.51	1317.43	1099.26	0.00	0.00	1373.21
7	6139.92	79.03	88.86	5372.00	1326.63	1563.09	10.00	88.86	1826.69
8	10632.67	79.03	88.86	6227.00	1414.18	5972.85	0.00	0.00	6137.99



PROJECT DETAILS: Weld County, CO (NAD83)  
Geodetic System: US State Plane 1983  
Datum: North American Datum 1983  
Ellipsoid: GRS 1980  
Zone: Colorado Northern Zone  
System Datum: Ground Level  
Local North: True

