

OPERATOR: **Extraction Oil & Gas**

WELL NAME: **Trott 8E-10-1N**

FIELD NAME: DJ Basin - Wattenberg

DRILLING RIG: Patterson 346

API #: 05-123-45716

LAT/LONG: 40.324432, -105.040621
SURFACE HOLE: NESE S7-T4N-R68W, 1549' FSL, 1038' FEL
BOTTOM HOLE: S8-T4N-R68W, 2127' FNL, 460' FEL

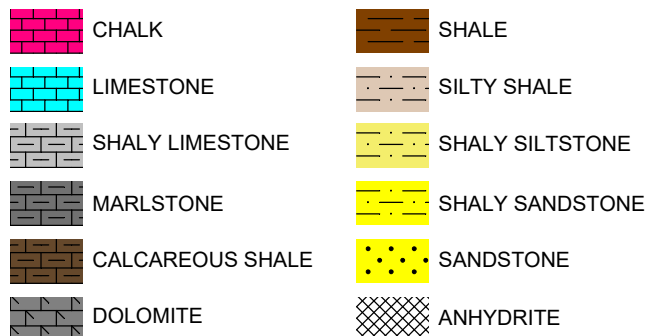


Earth Science Agency, LLC

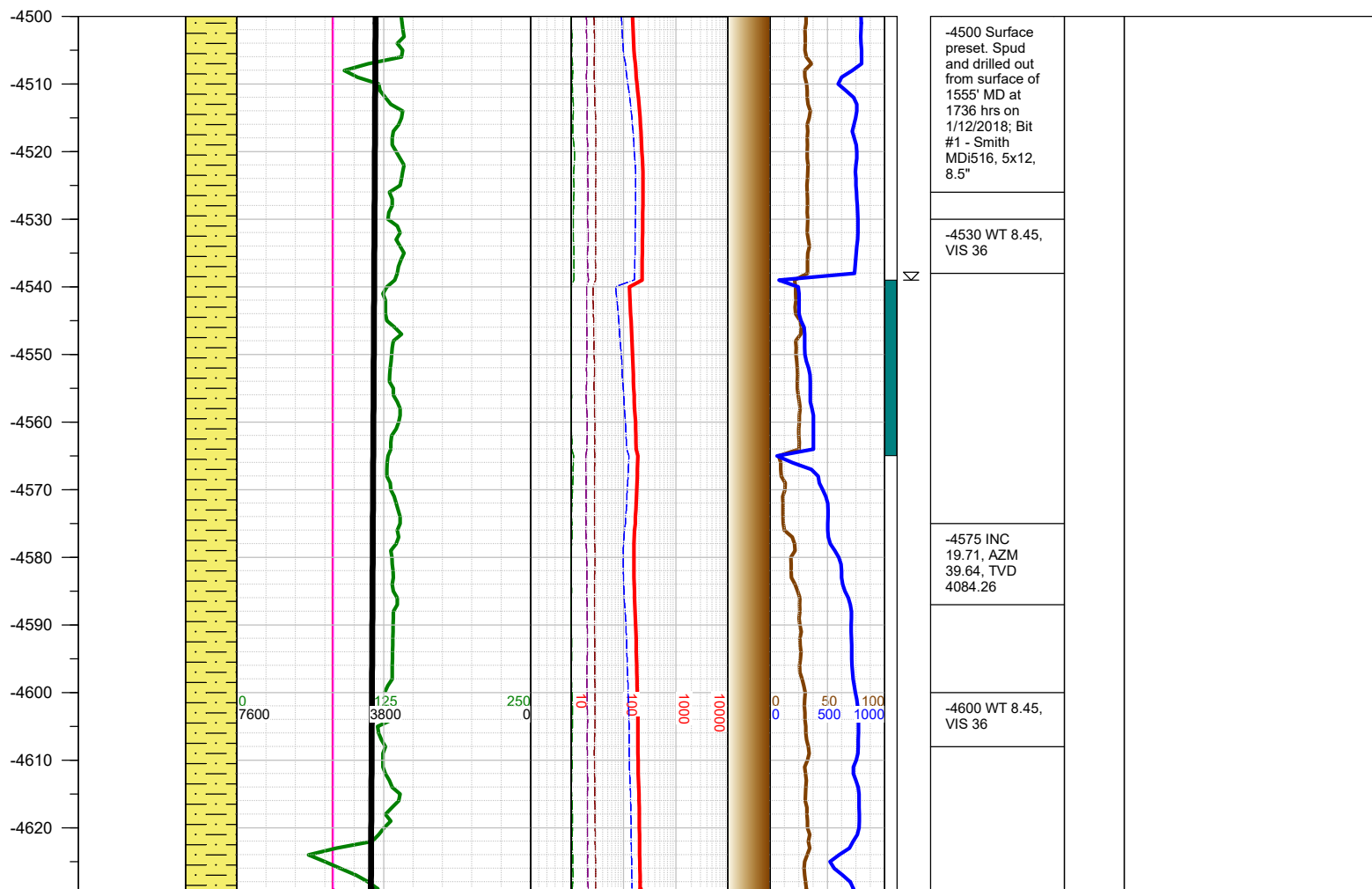
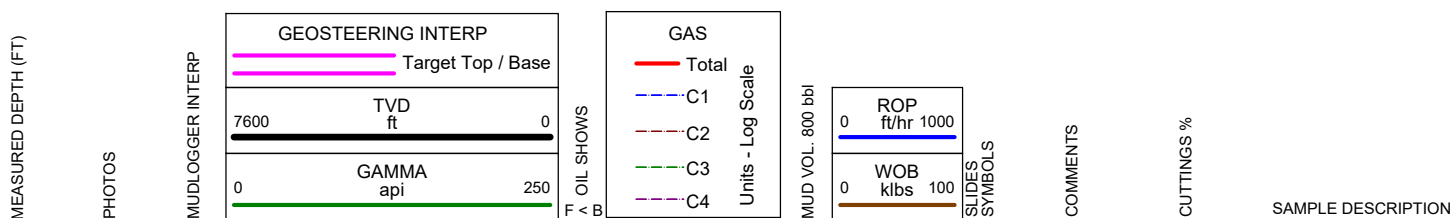
COUNTY: Weld
STATE: Colorado
GROUND ELEVATION: 5035'
KELLY BUSHING: 5060'
DRILLING FLUID: OBM
TVD VS. MD: 6089' / 10424'
SPUD DATE: January 12, 2018
TD DATE: January 15, 2018

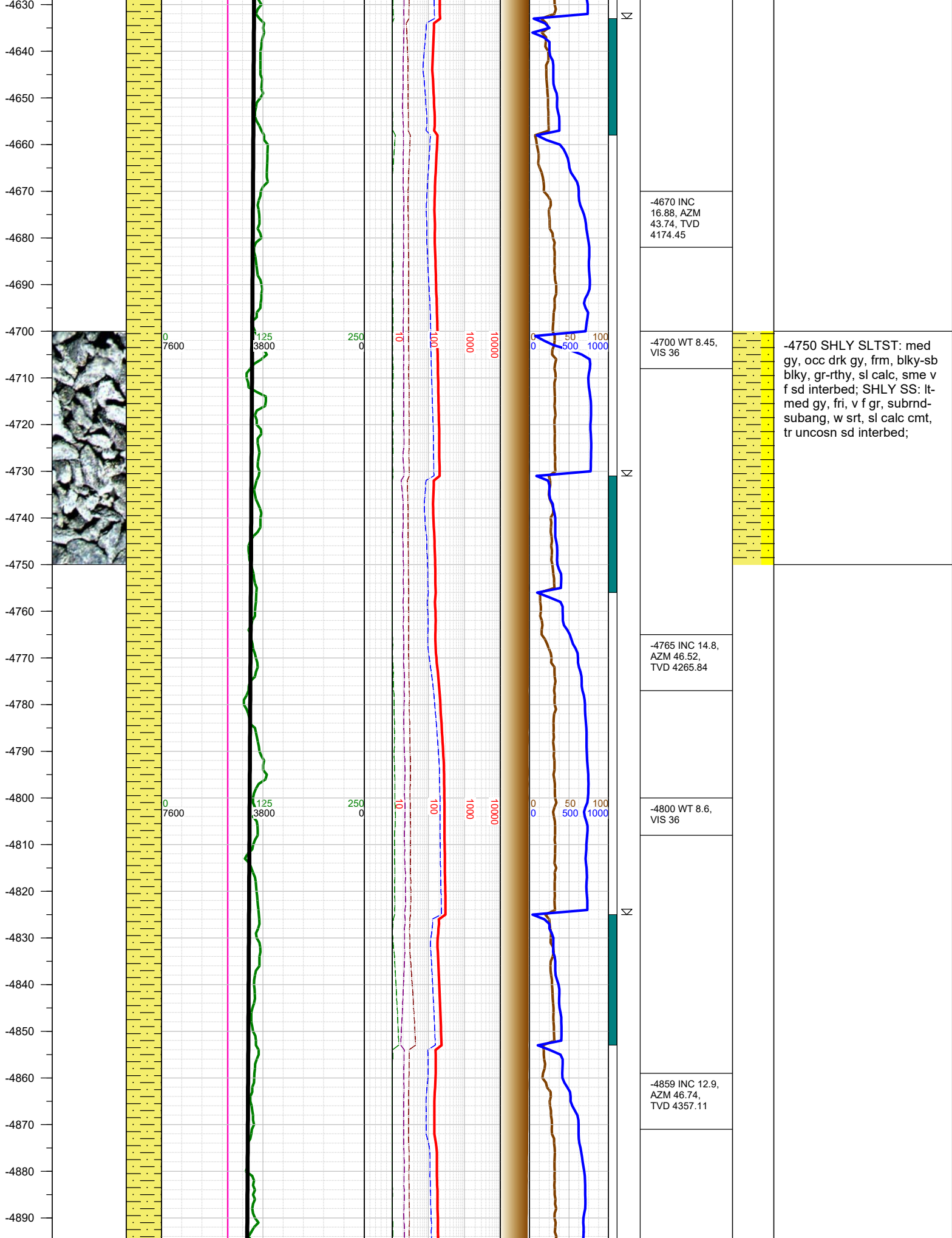
DEPTHS LOGGED: 4500' - 10424'
DATES LOGGED: January 12, 2018 - January 15, 2018
GEOLOGISTS: Ross Apodaca, Brian Whitfield
SCALE: 5" = 100'

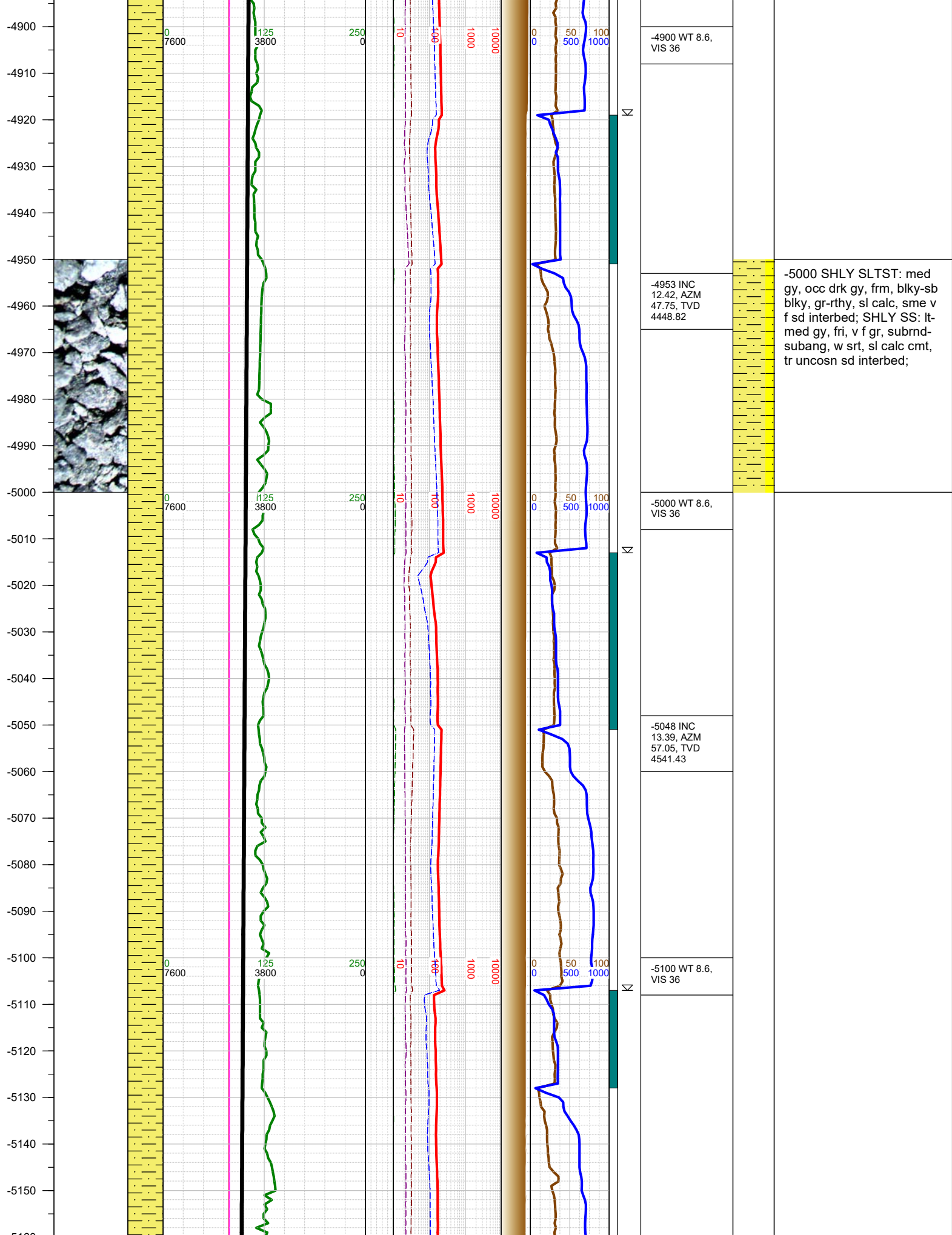
LEGEND

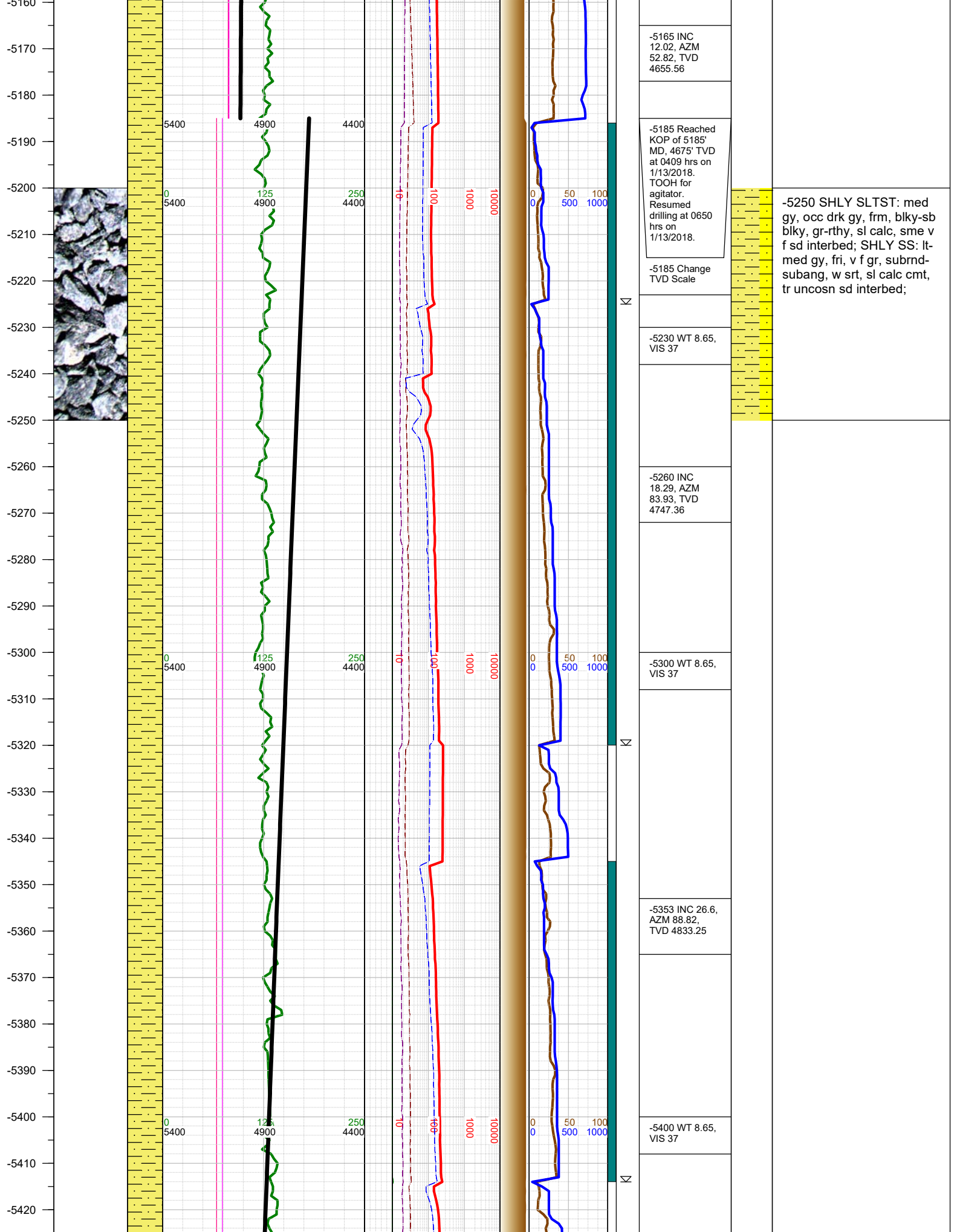


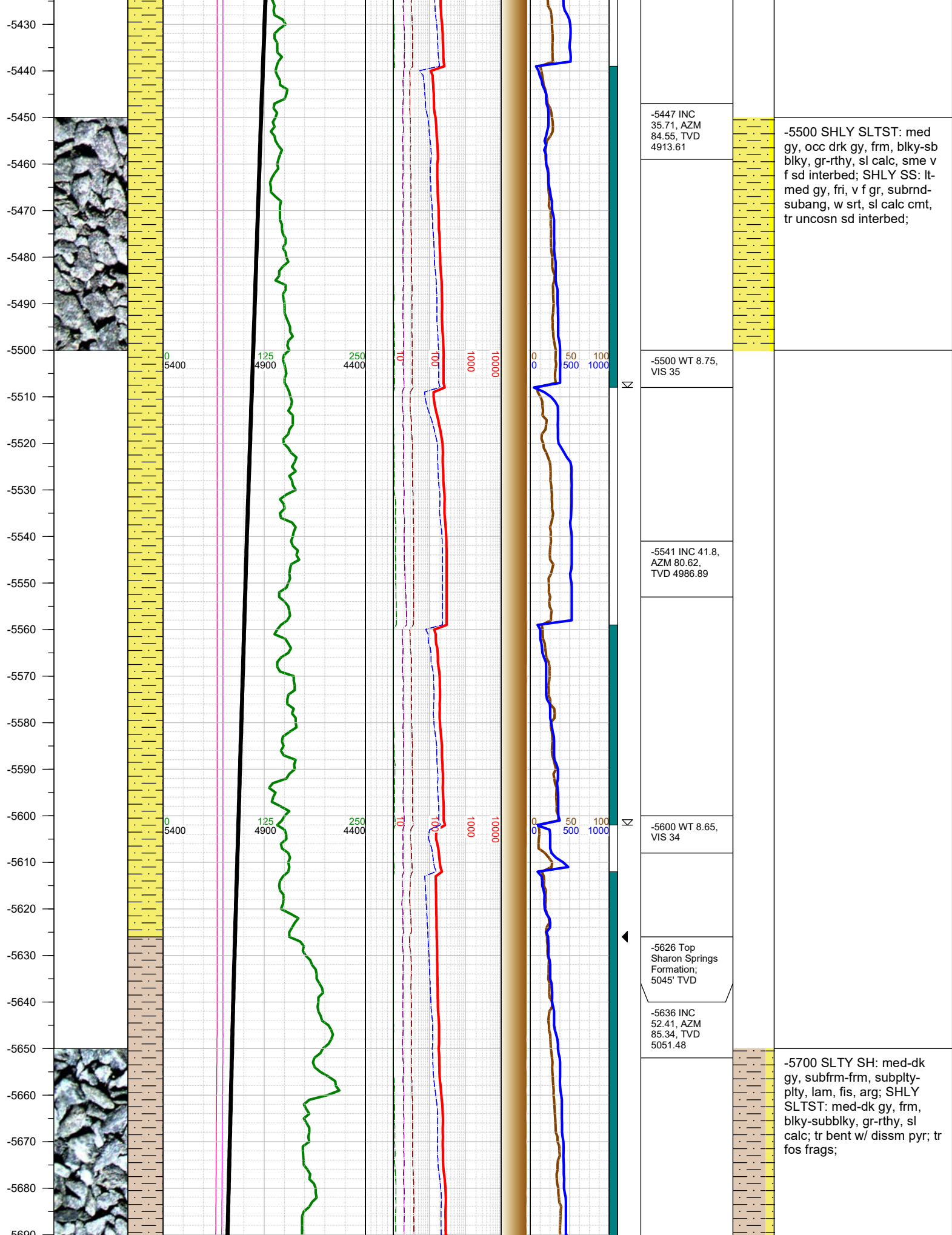
FORMATION CONNECTION MIDNIGHT NEW BIT GAS SHOW FAULT

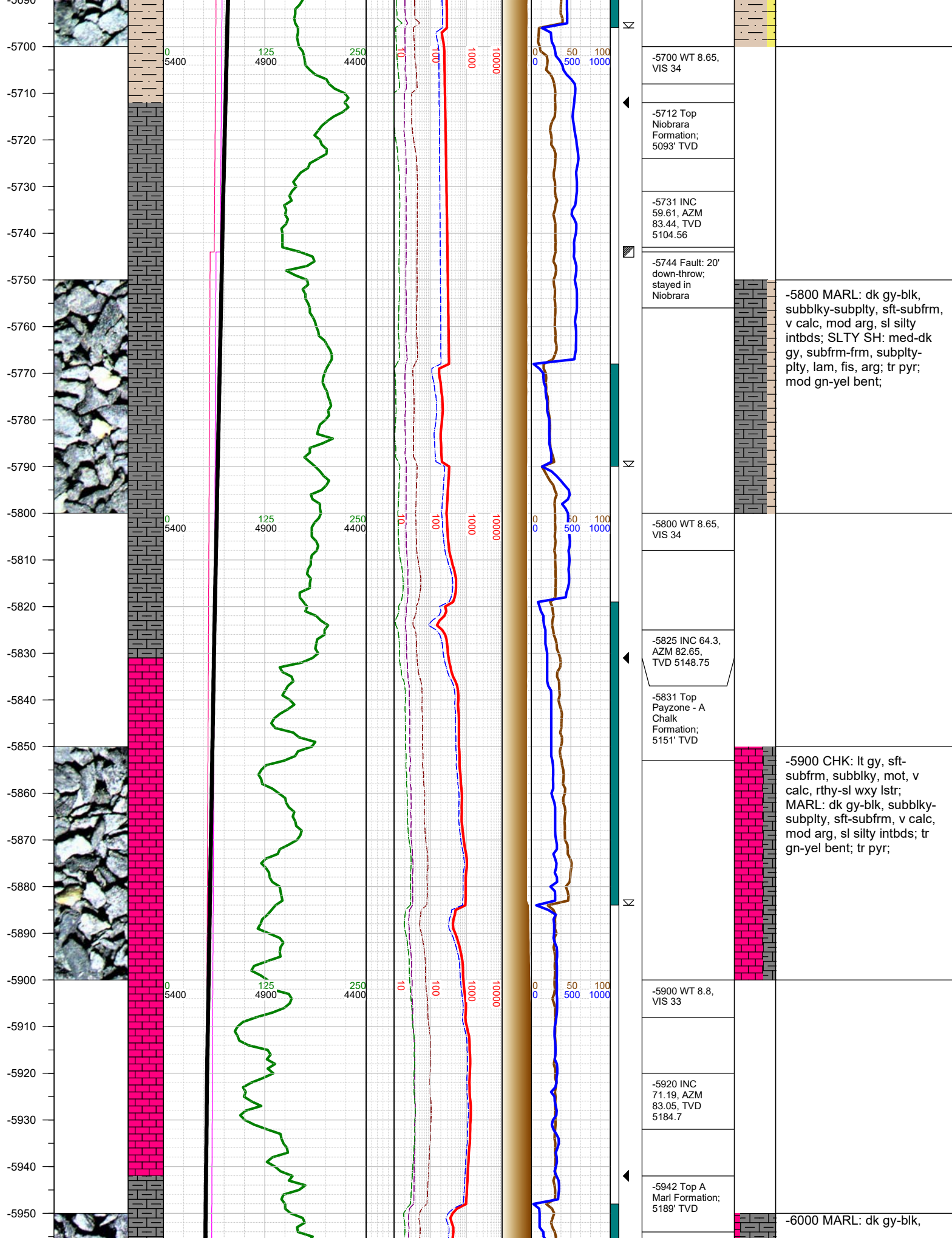


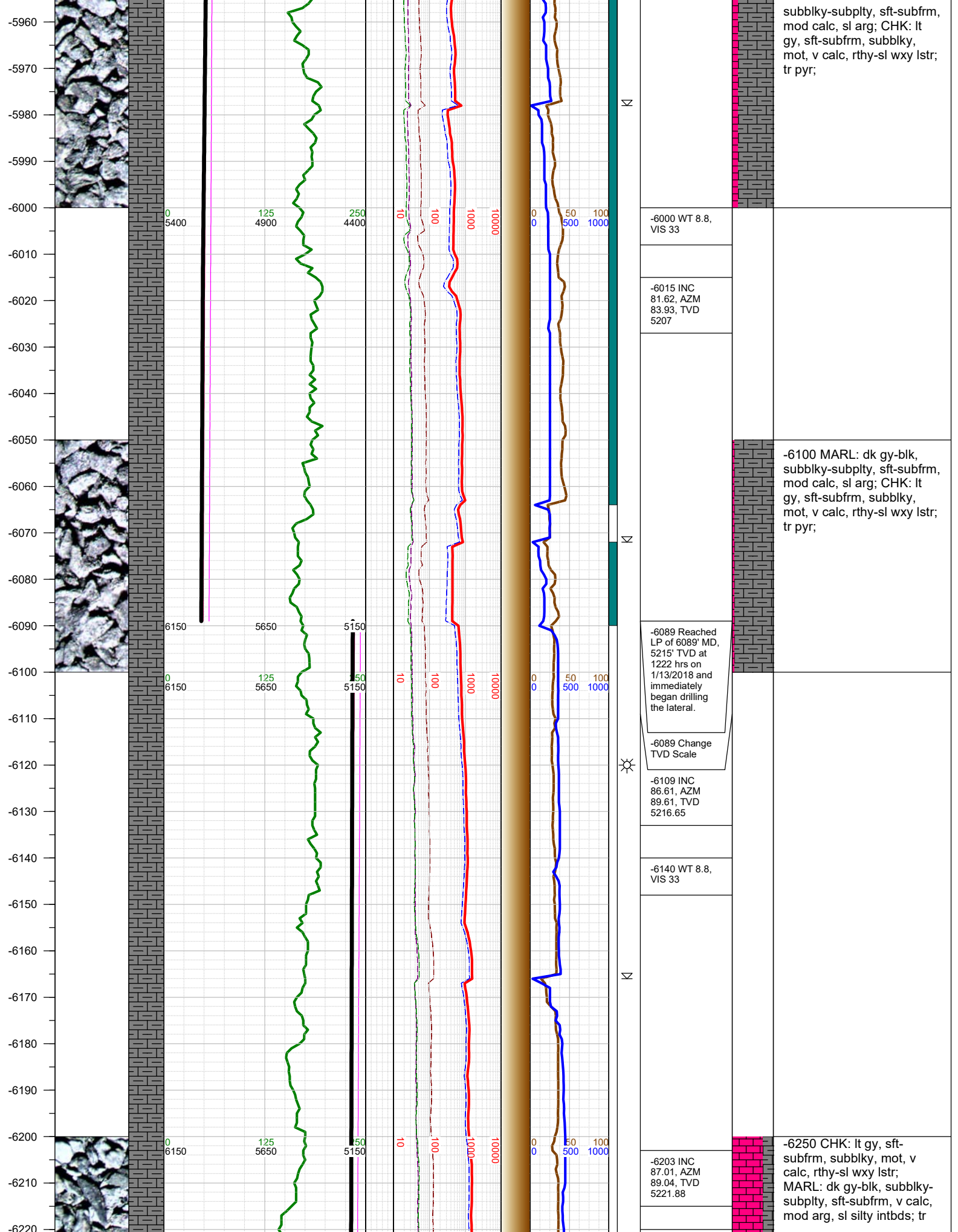


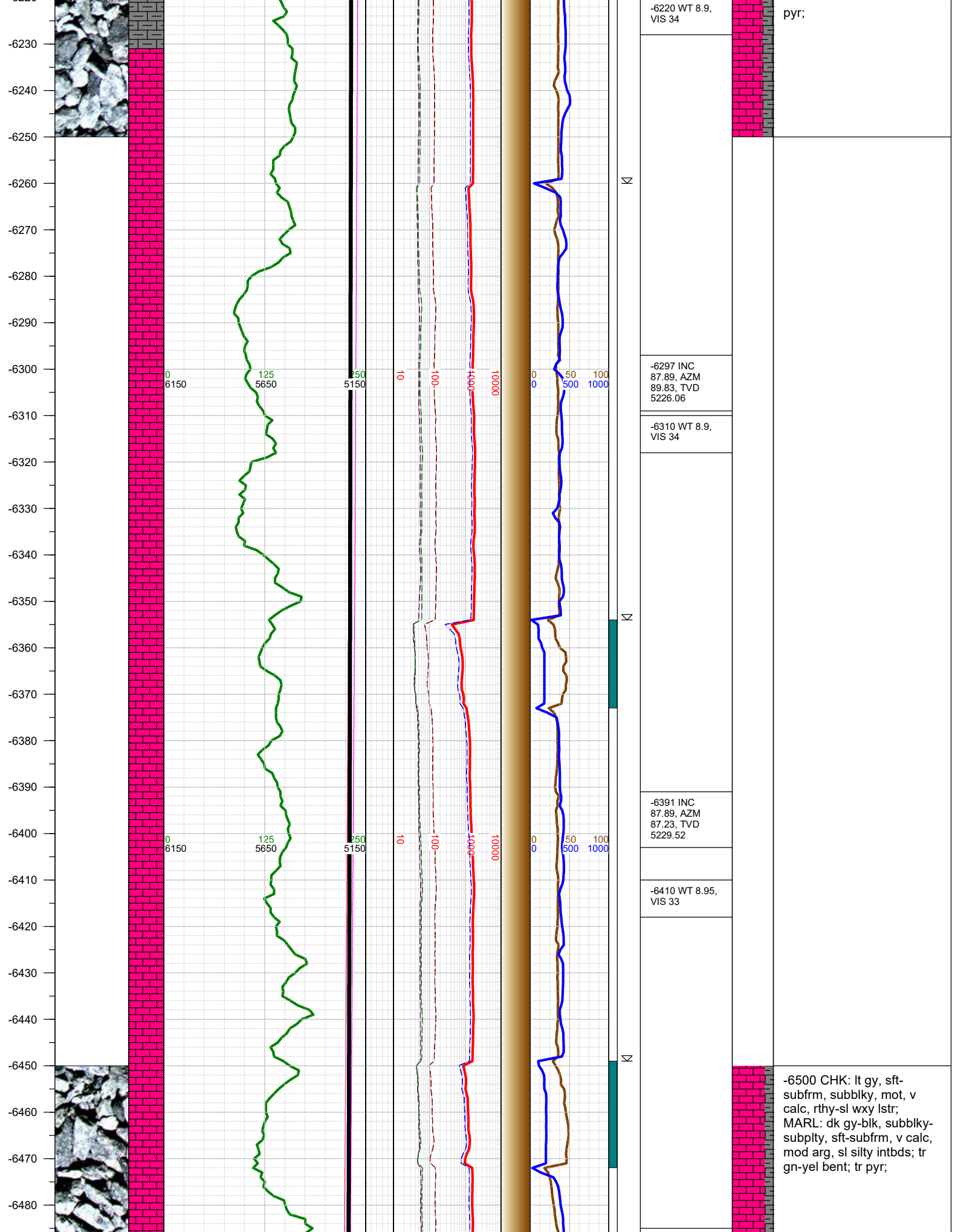


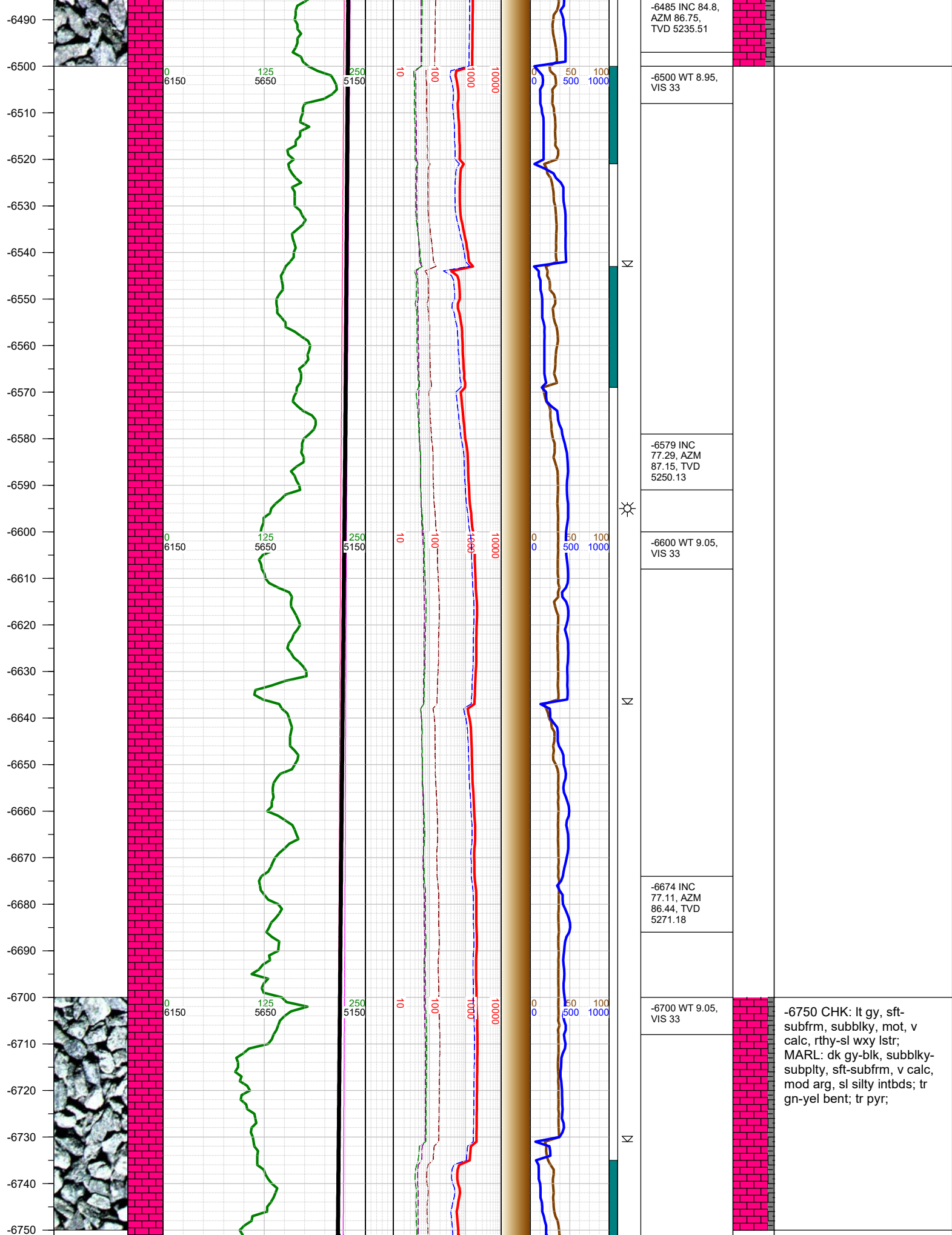


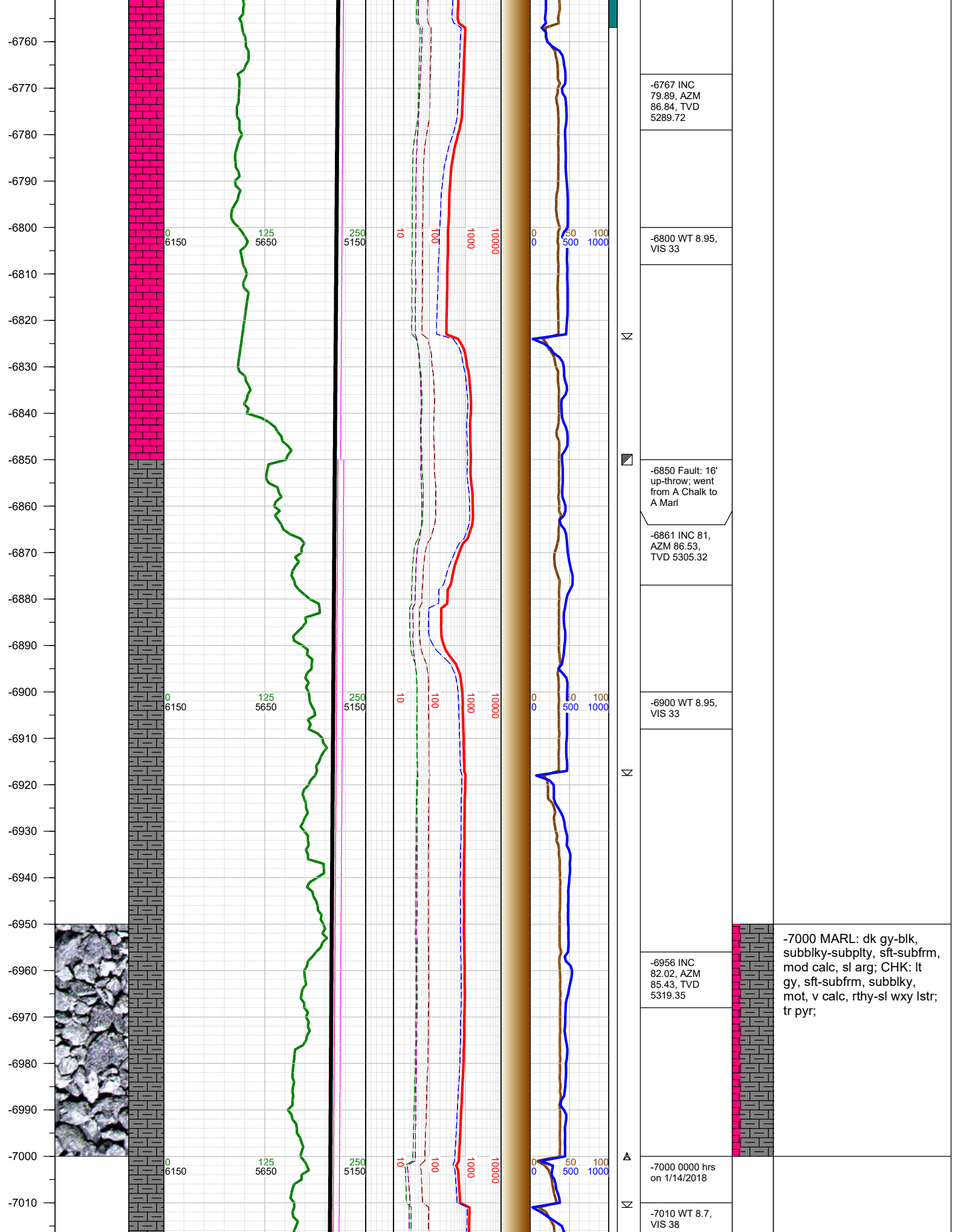




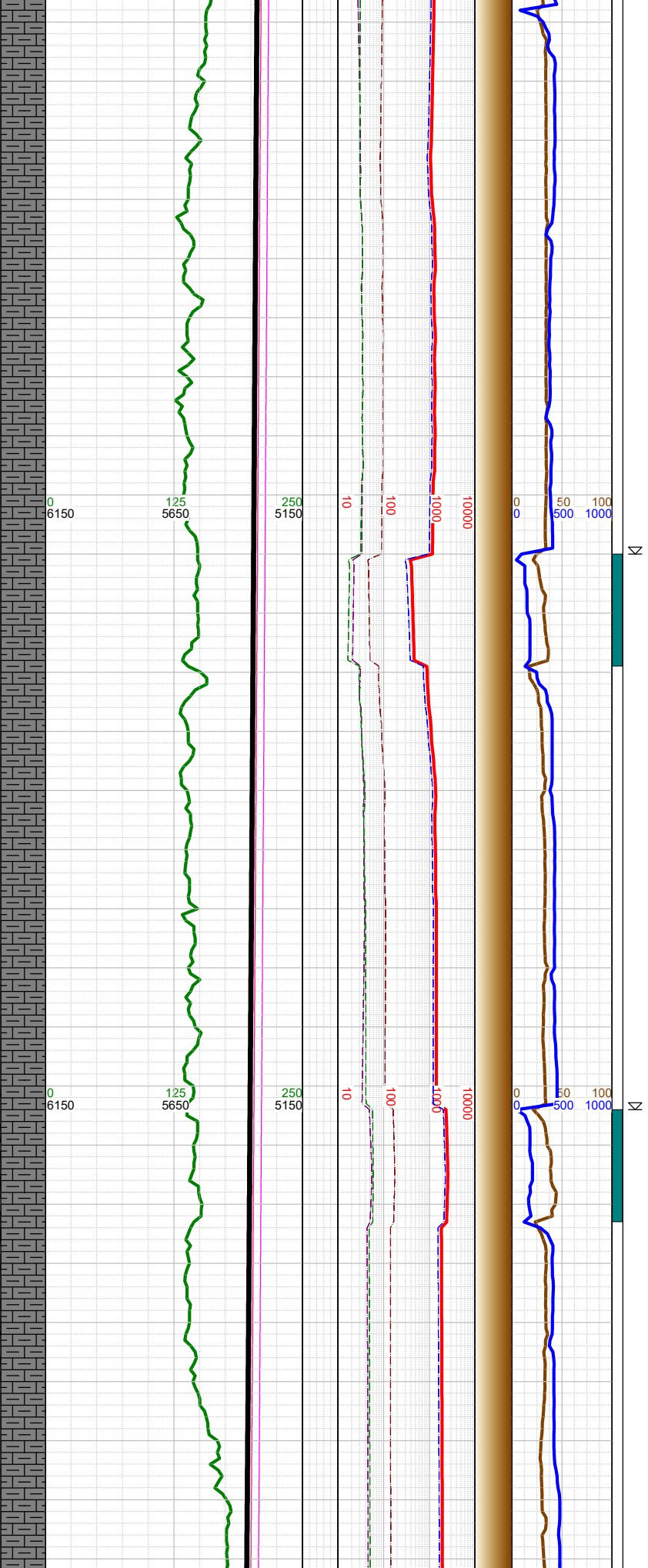
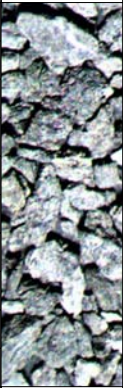








-7020
-7030
-7040
-7050
-7060
-7070
-7080
-7090
-7100
-7110
-7120
-7130
-7140
-7150
-7160
-7170
-7180
-7190
-7200
-7210
-7220
-7230
-7240
-7250
-7260
-7270
-7280



-7050 INC
82.19, AZM
84.63, TVD
5332.26

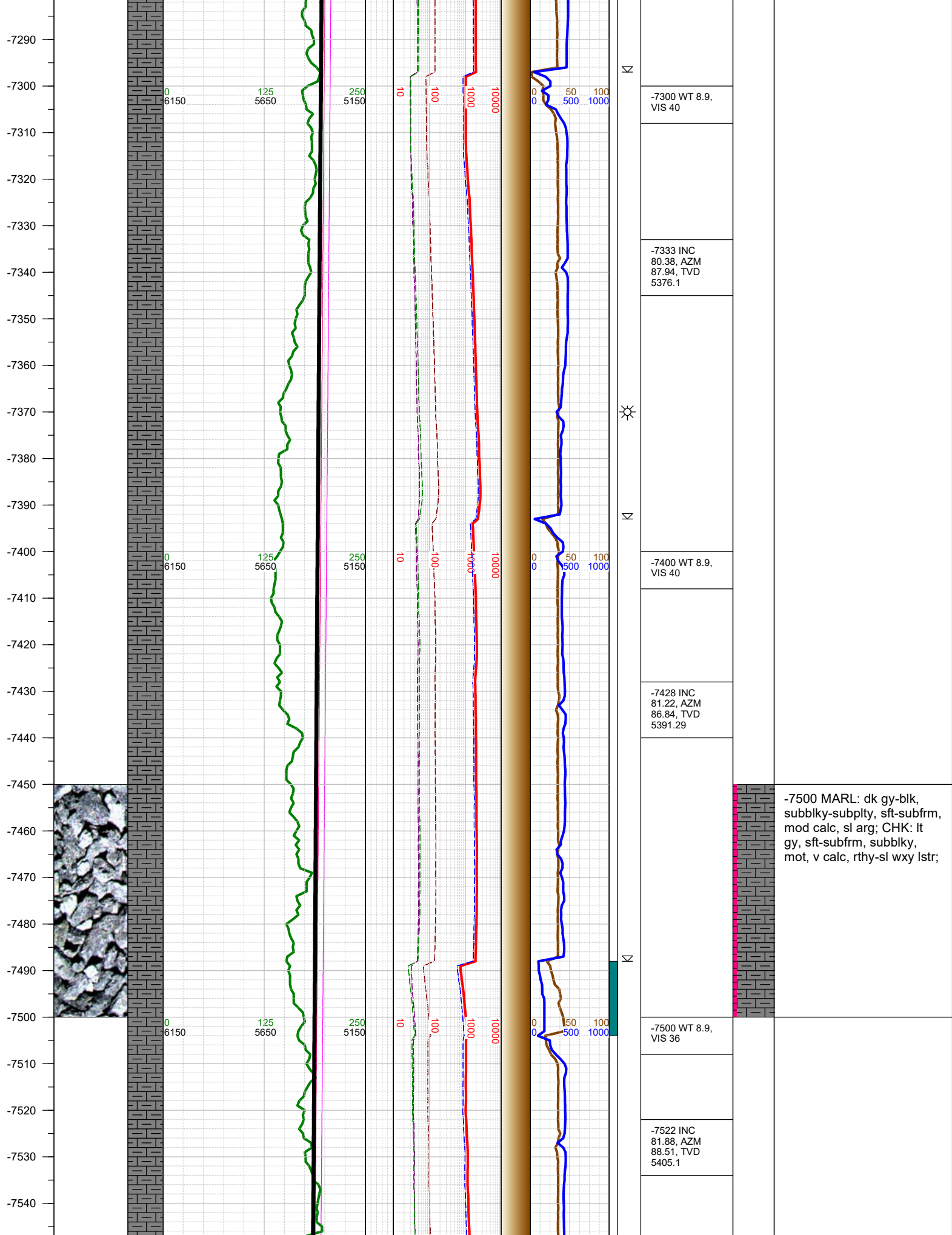
-7100 WT 8.9,
VIS 38

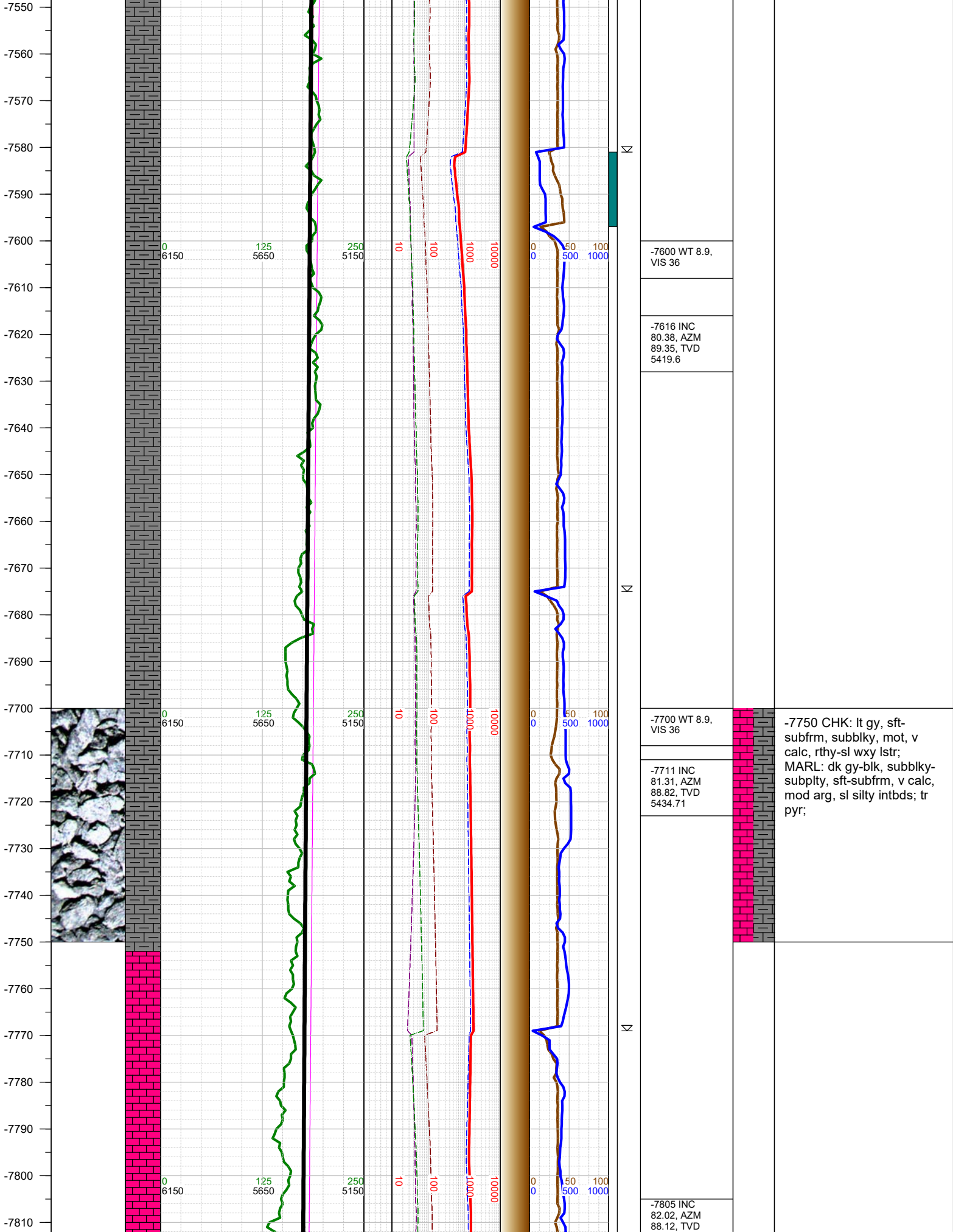
-7144 INC 82.1,
AZM 87.63,
TVD 5345.11

-7200 WT 8.9,
VIS 40

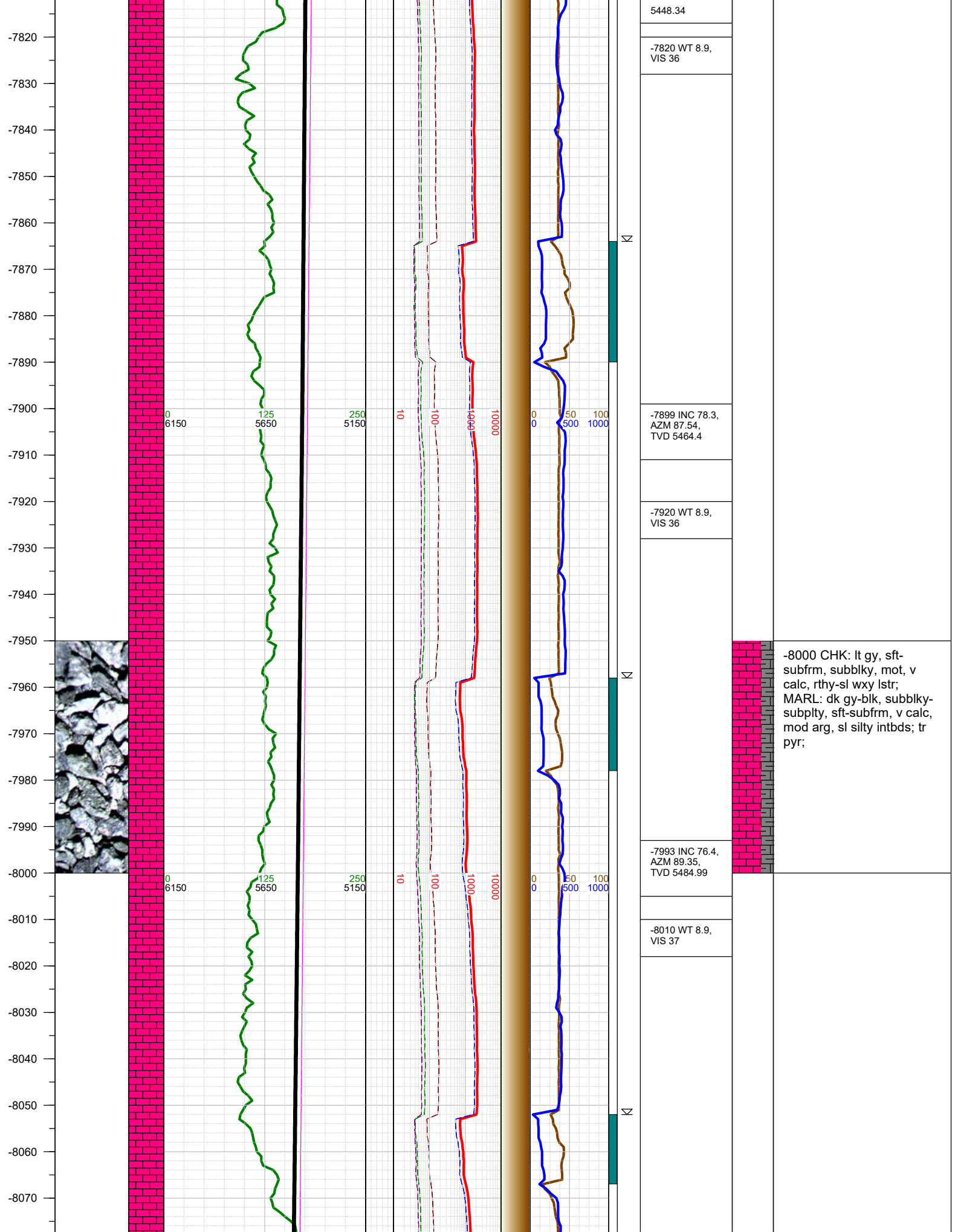
-7238 INC
79.89, AZM
88.42, TVD
5359.82

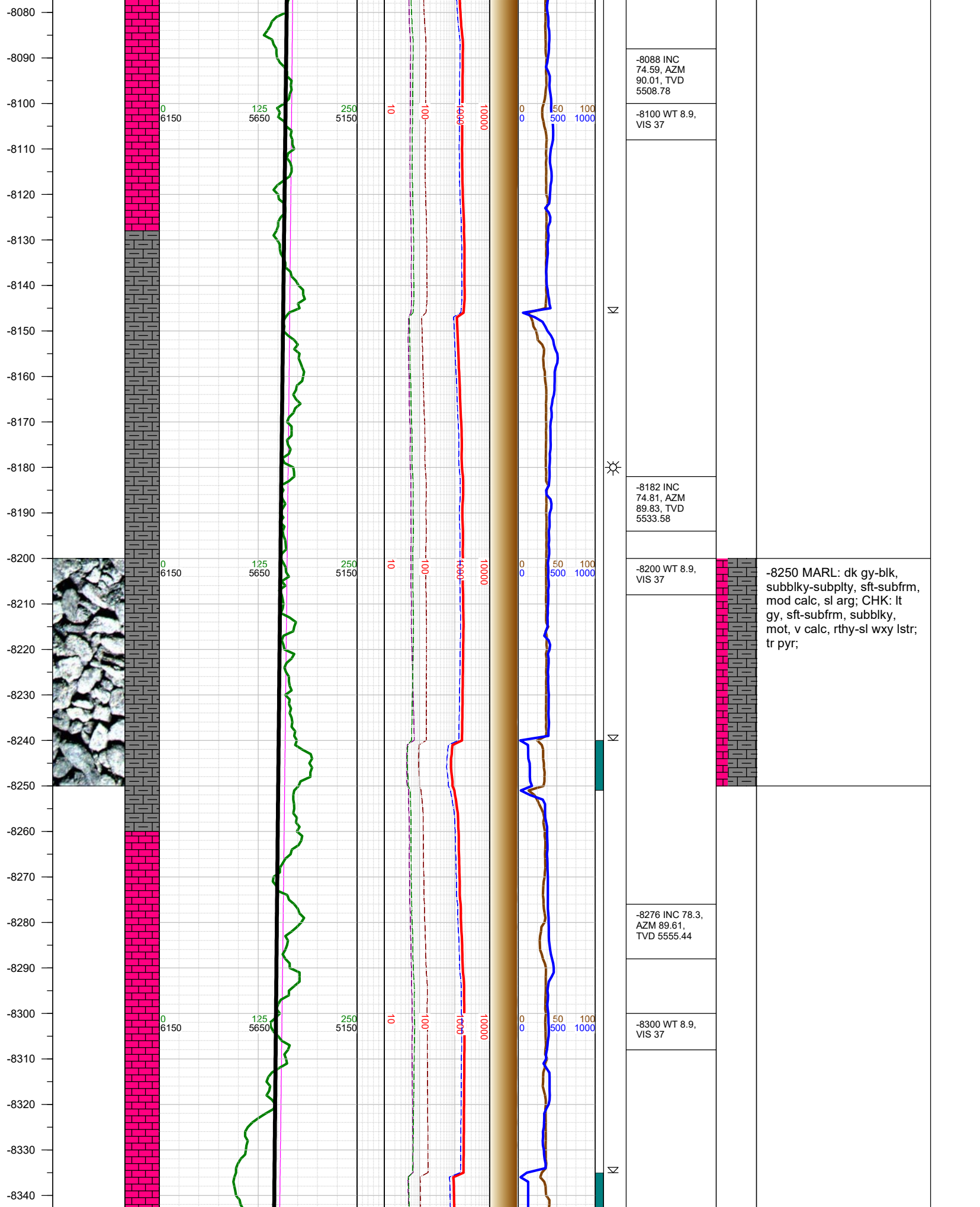
-7250 MARL: dk gy-blk,
subblky-subplty, sft-subfrm,
mod calc, sl arg; CHK: lt
gy, sft-subfrm, subblky,
mot, v calc, rthy-sl wxy lstr;
tr pyr;

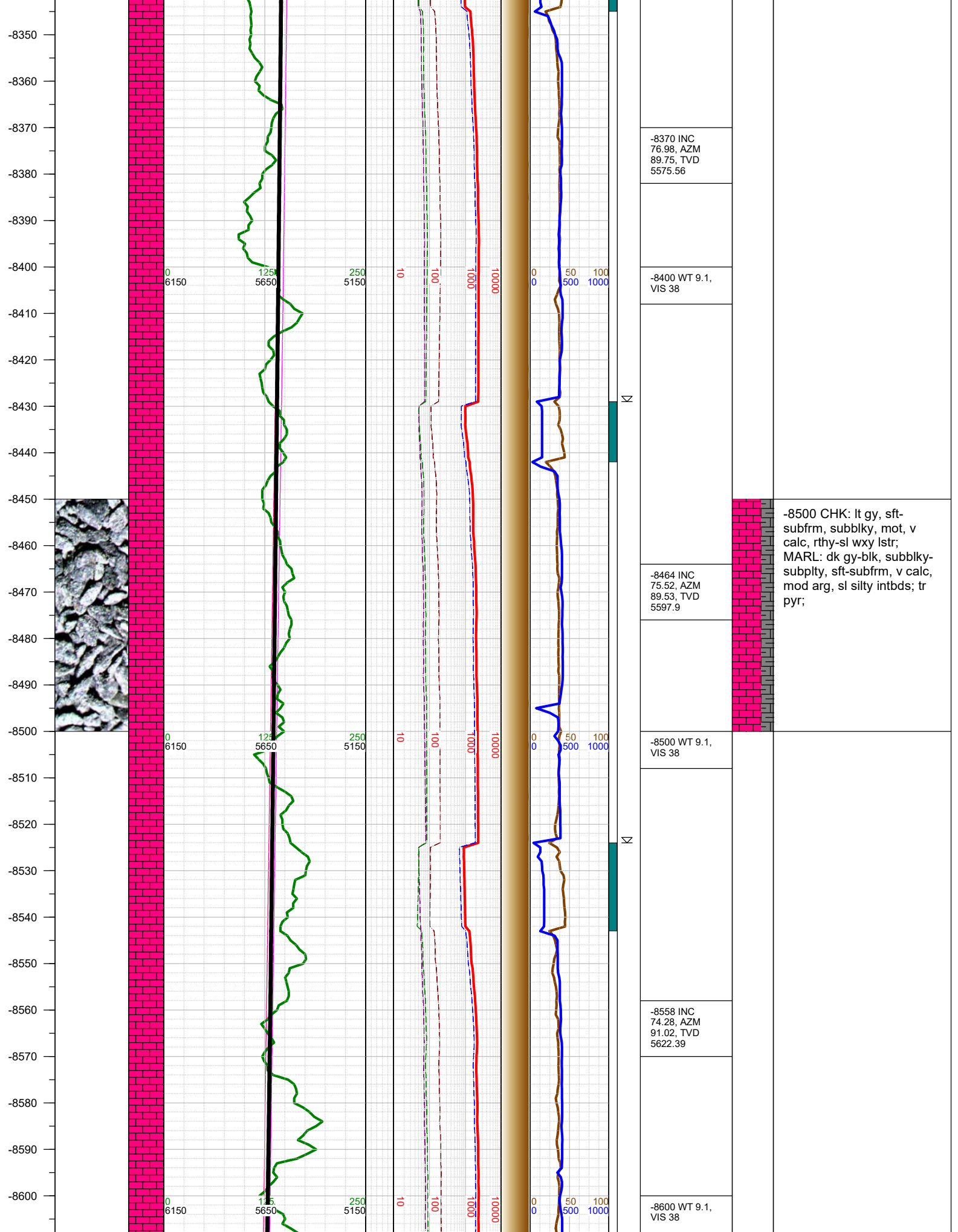


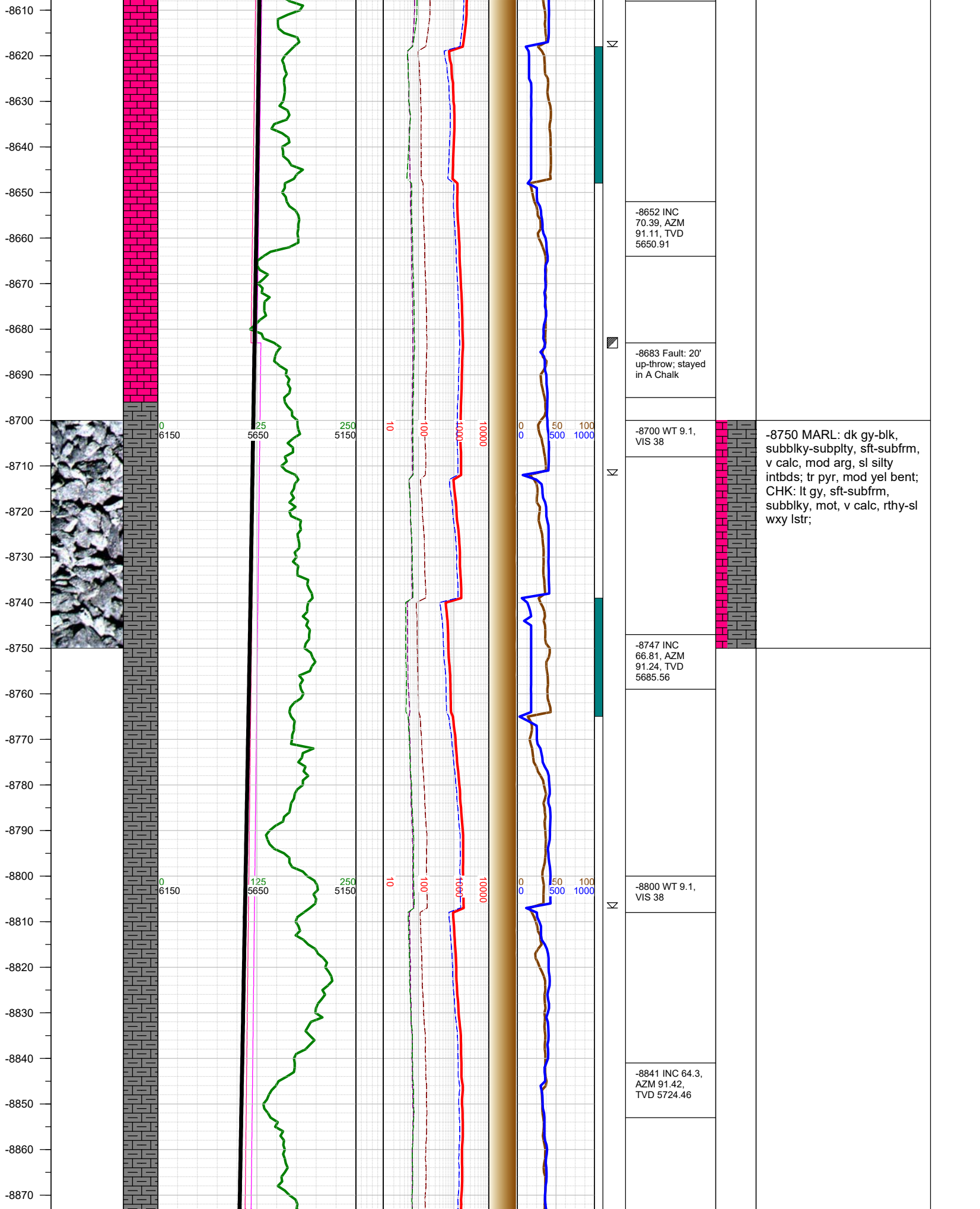


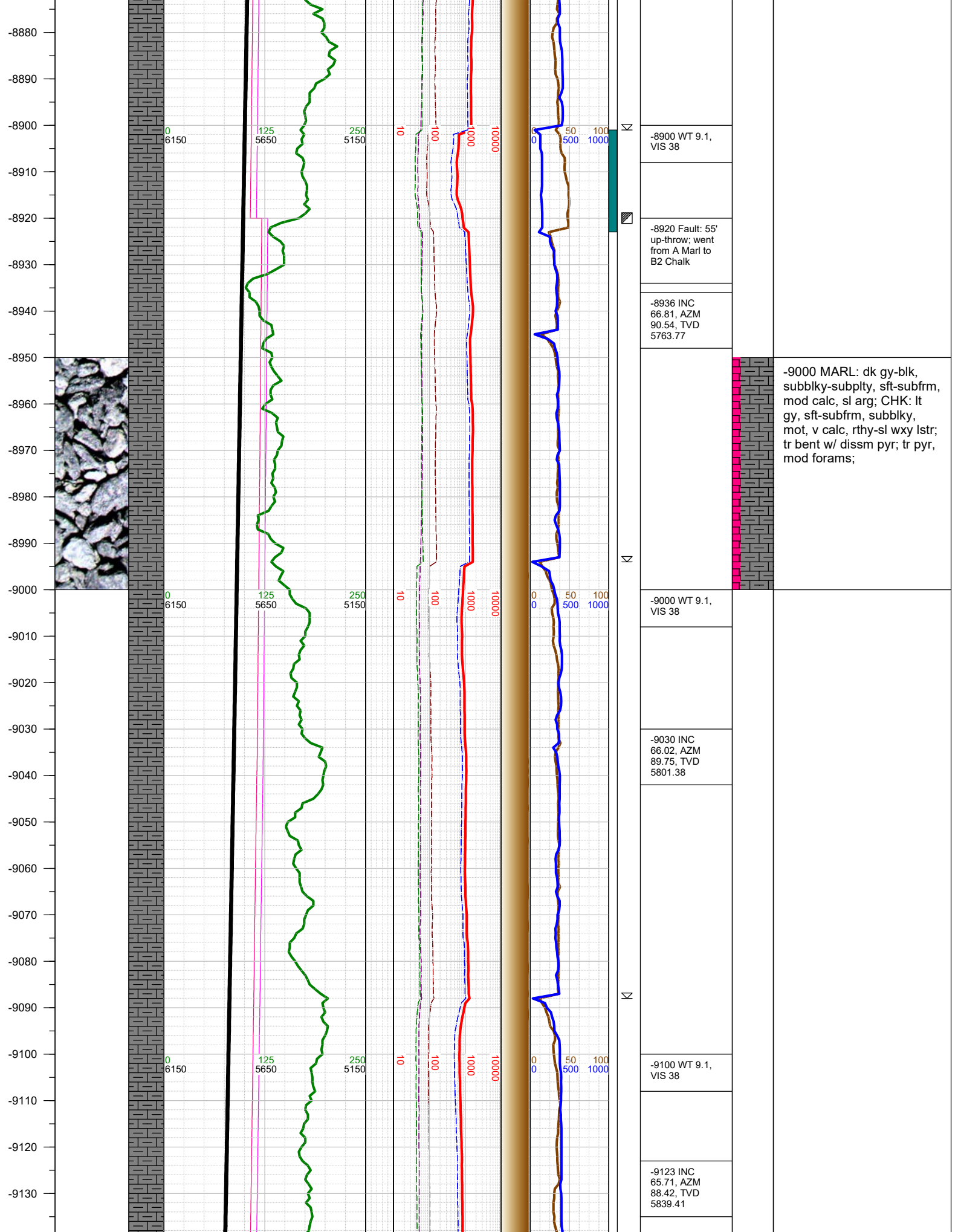
-7750 CHK: lt gy, sft-subfrm, subblky, mot, v calc, rthy-sl wxy lstr; MARL: dk gy-blk, subblky-subplty, sft-subfrm, v calc, mod arg, sl silty intbds; tr pyr;

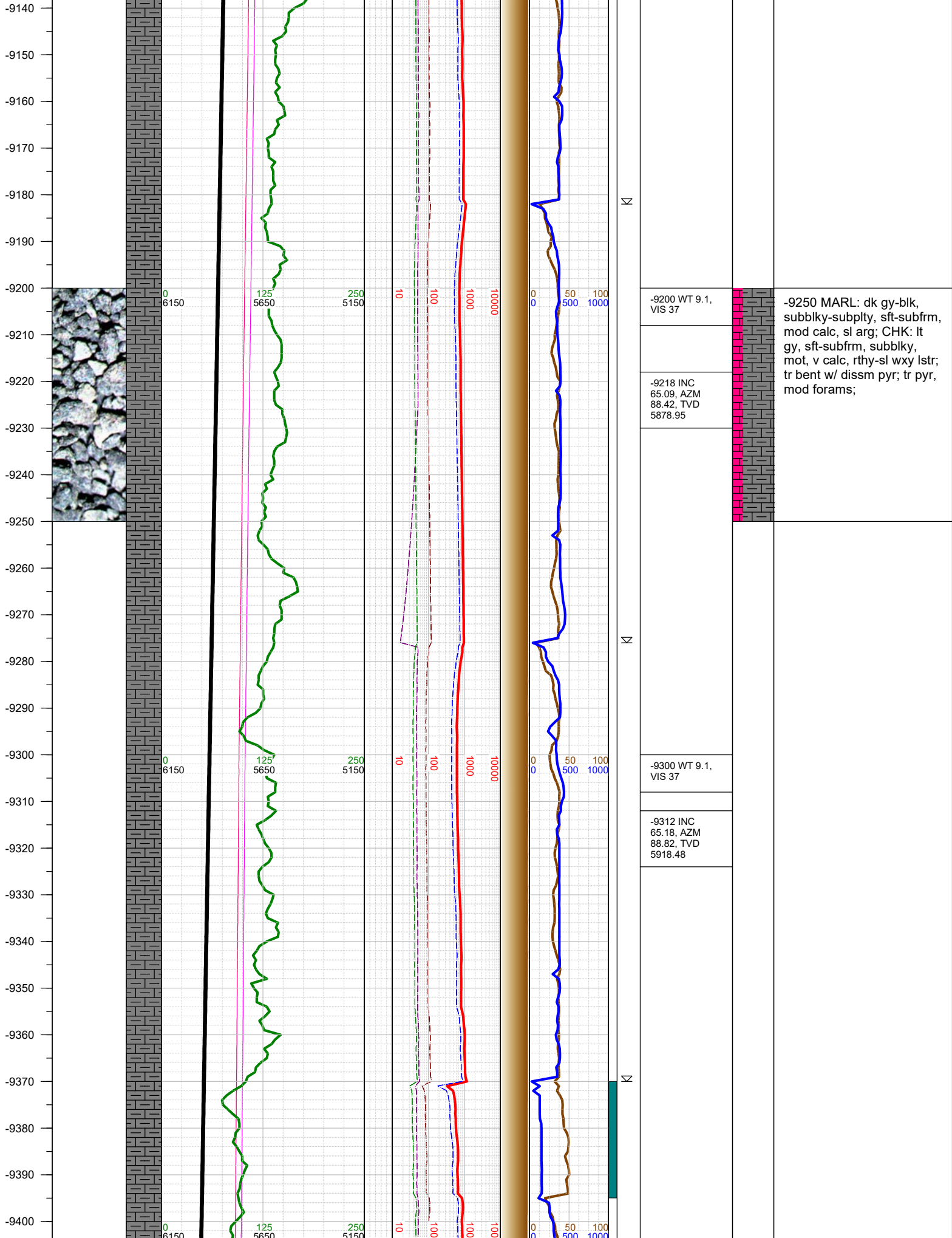


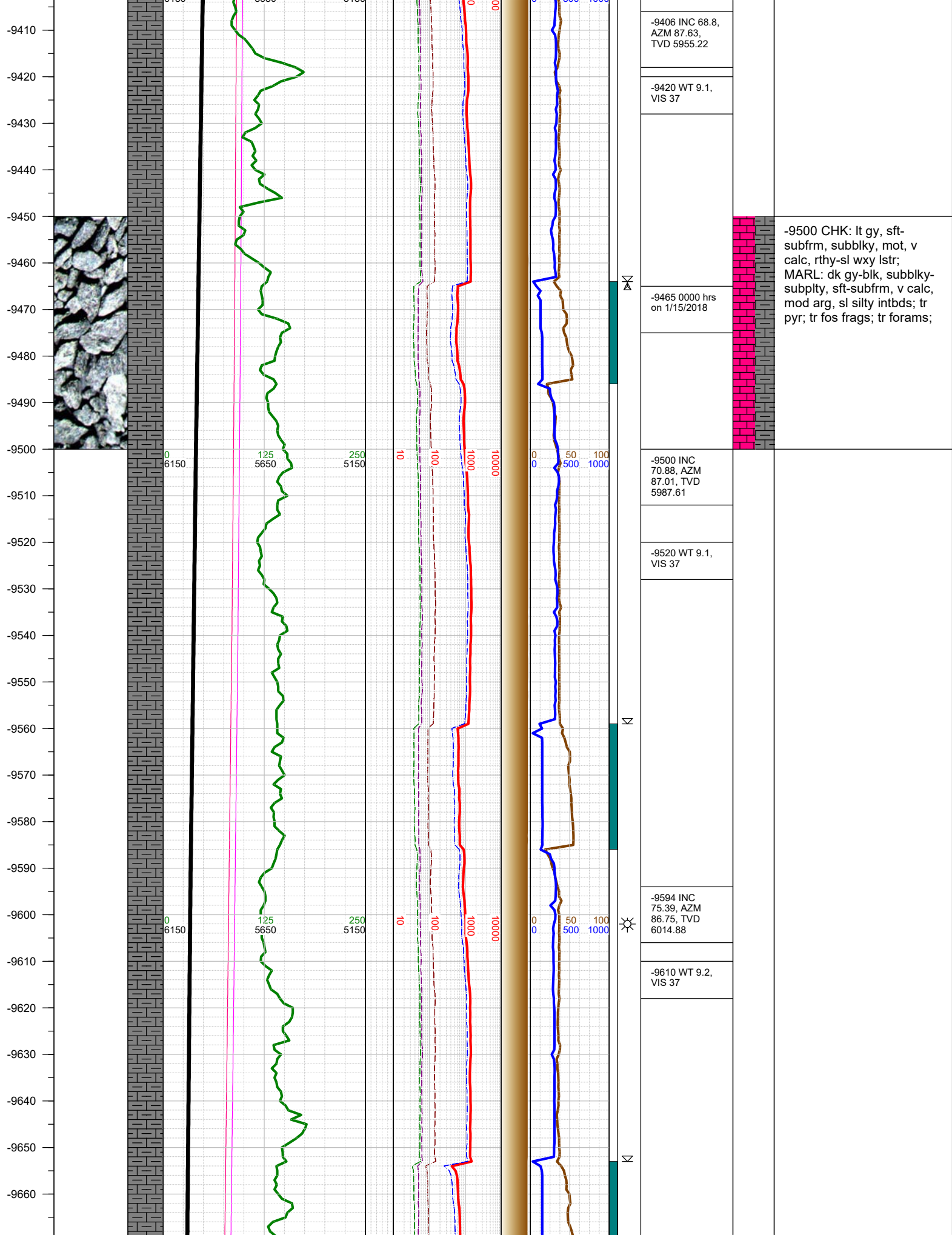


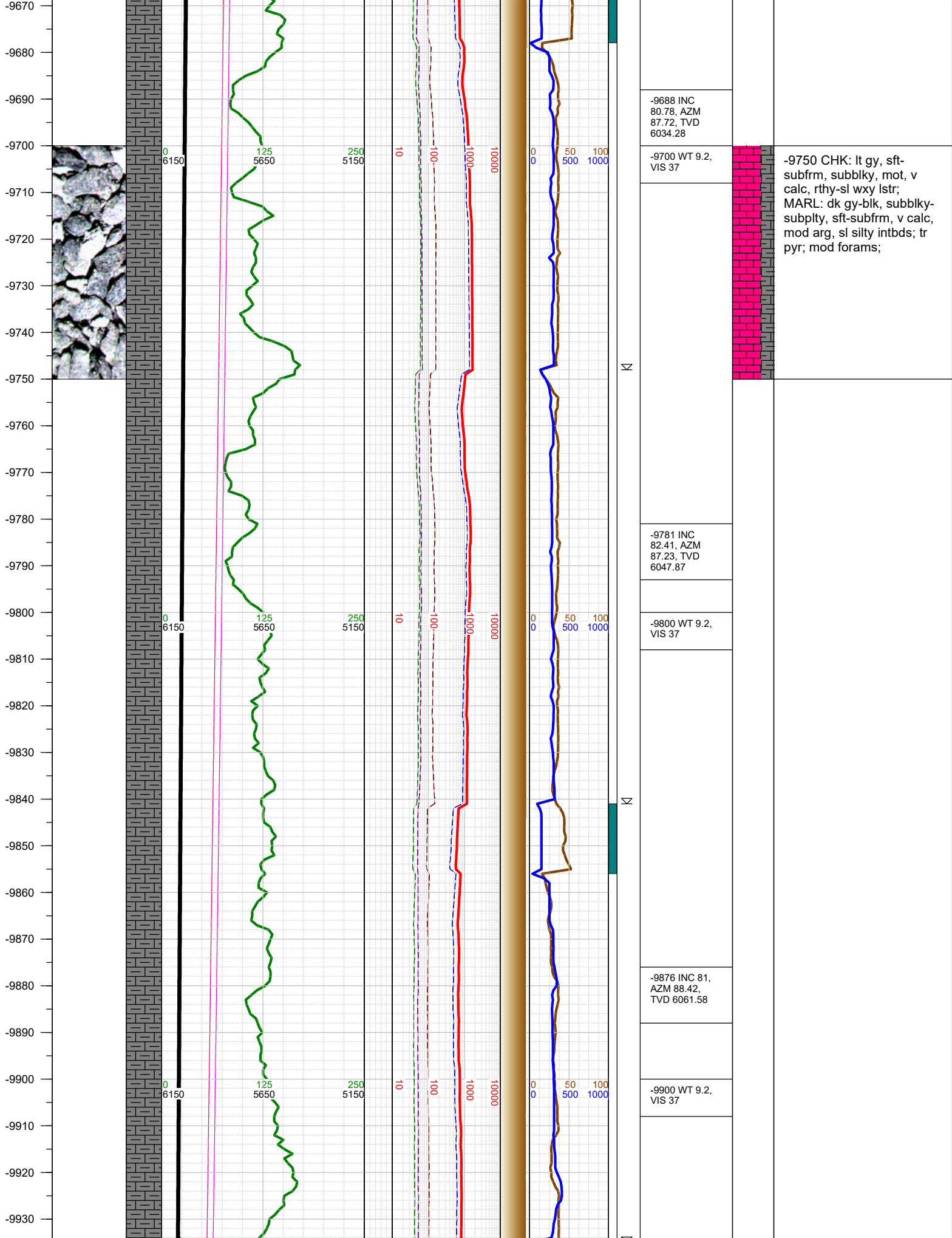


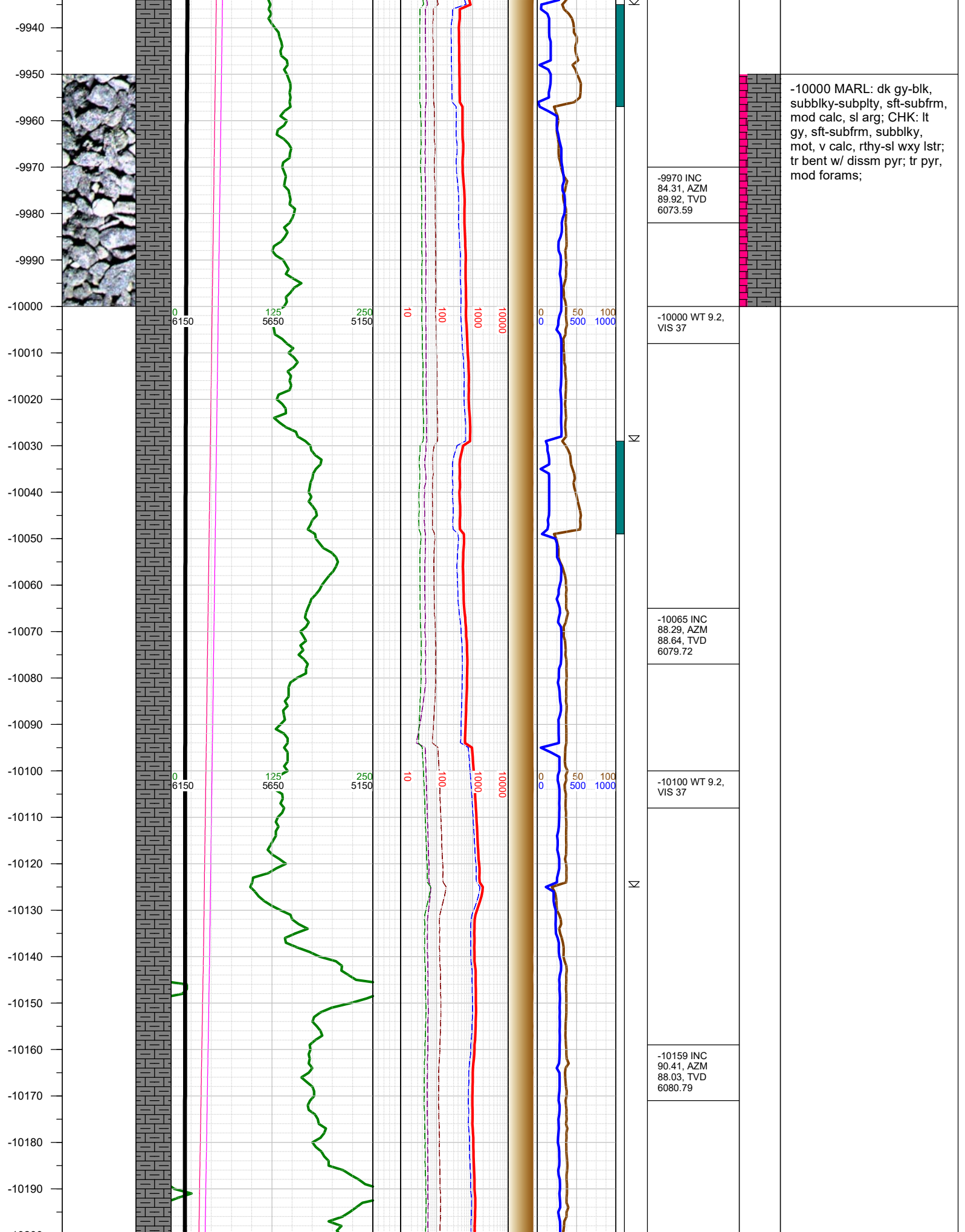


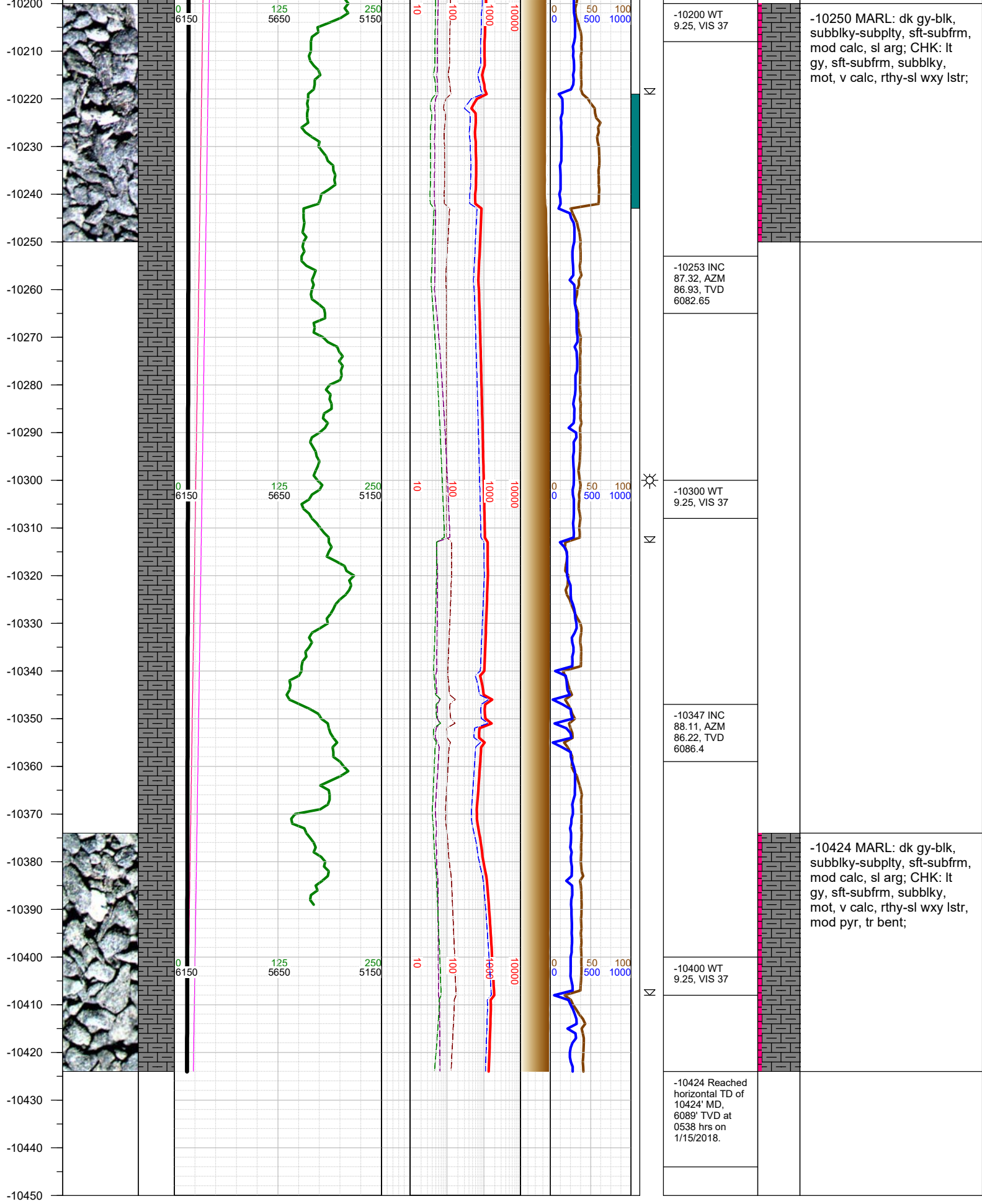












TOTAL DEPTH = 10424'

Thank you for using Earth Science Agency