

OPERATOR: **Extraction Oil & Gas**  
WELL NAME: **Berthoud Farms 8E-10-11C**  
FIELD NAME: DJ Basin - Wattenberg  
DRILLING RIG: Patterson 346  
API #: 05-123-45724

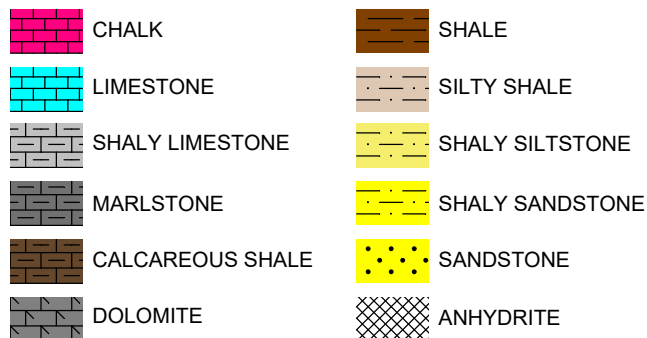
LAT/LONG: 40.324432, -105.040492  
SURFACE HOLE: NESE S7-T4N-R68W, 1548' FSL, 1002' FEL  
BOTTOM HOLE: S8-T4N-R68W, 1800' FNL, 460' FEL



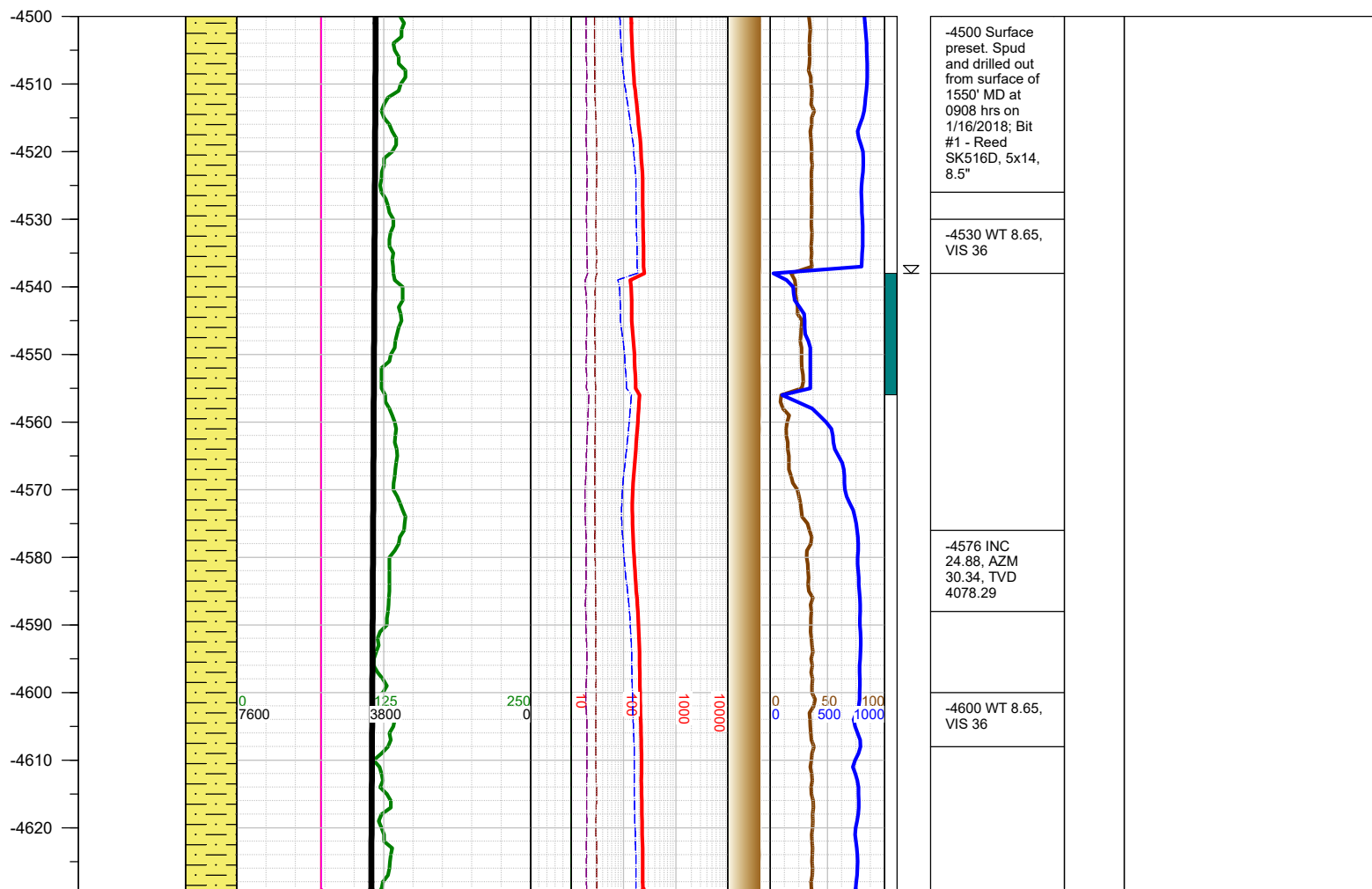
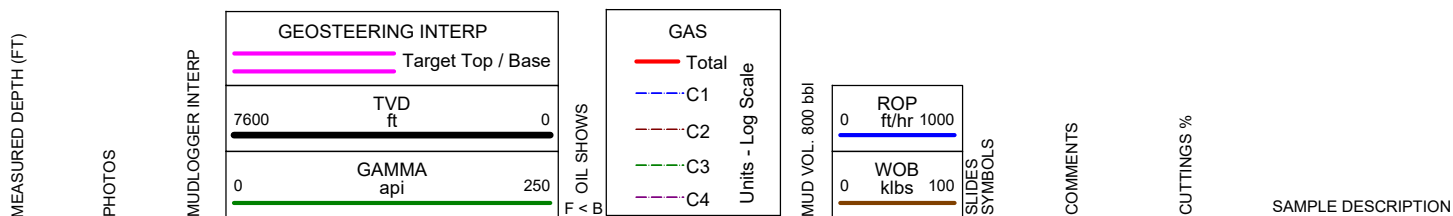
Earth Science Agency, LLC

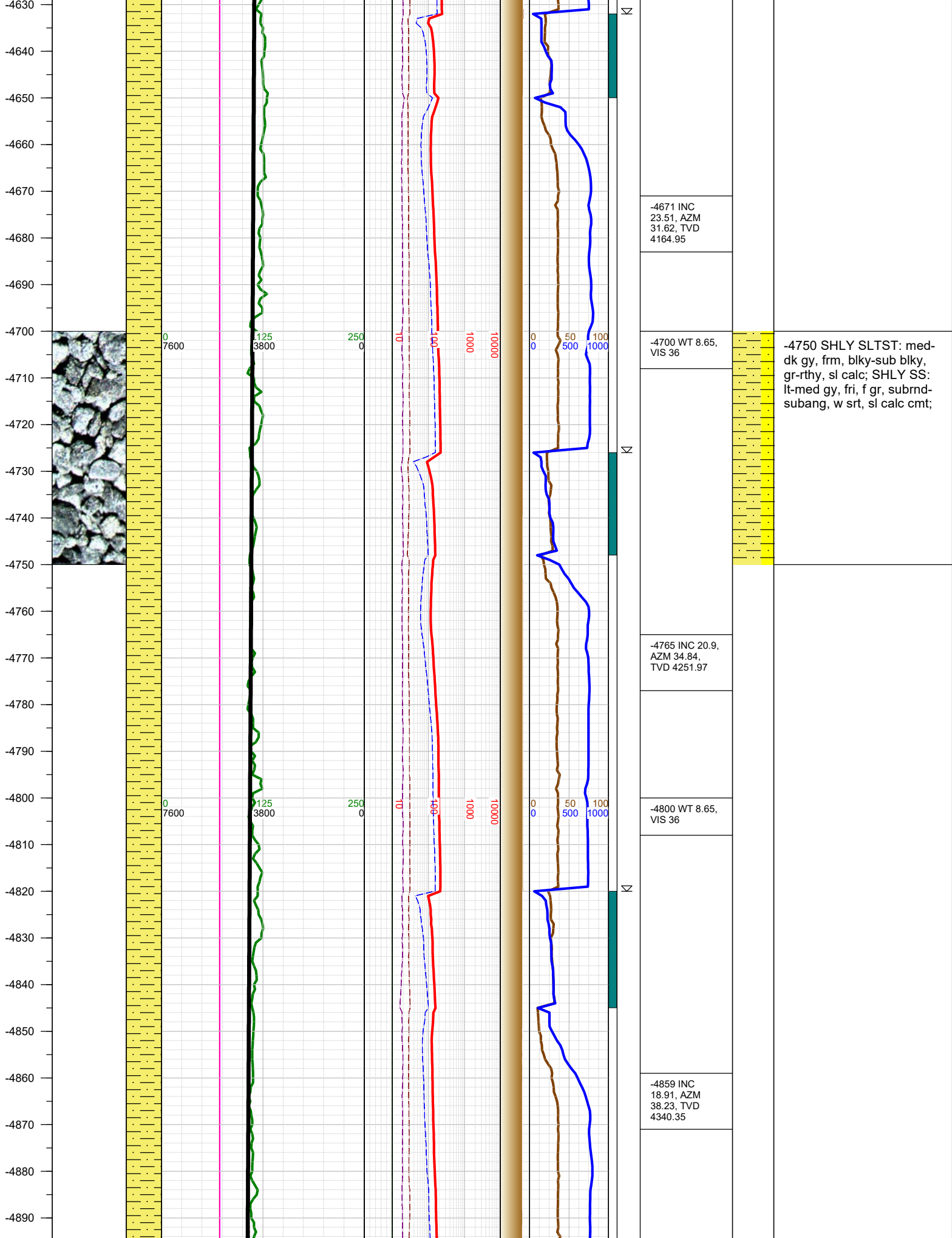
COUNTY: Weld  
STATE: Colorado  
GROUND ELEVATION: 5034'  
KELLY BUSHING: 5059'  
DRILLING FLUID: OBM  
TVD VS. MD: 6412' / 10690'  
SPUD DATE: January 16, 2018  
TD DATE: January 18, 2018  
  
DEPTHS LOGGED: 4500' - 10690'  
DATES LOGGED: January 16, 2018 - January 18, 2018  
GEOLOGISTS: Ross Apodaca, Brian Whitfield  
SCALE: 5" = 100'

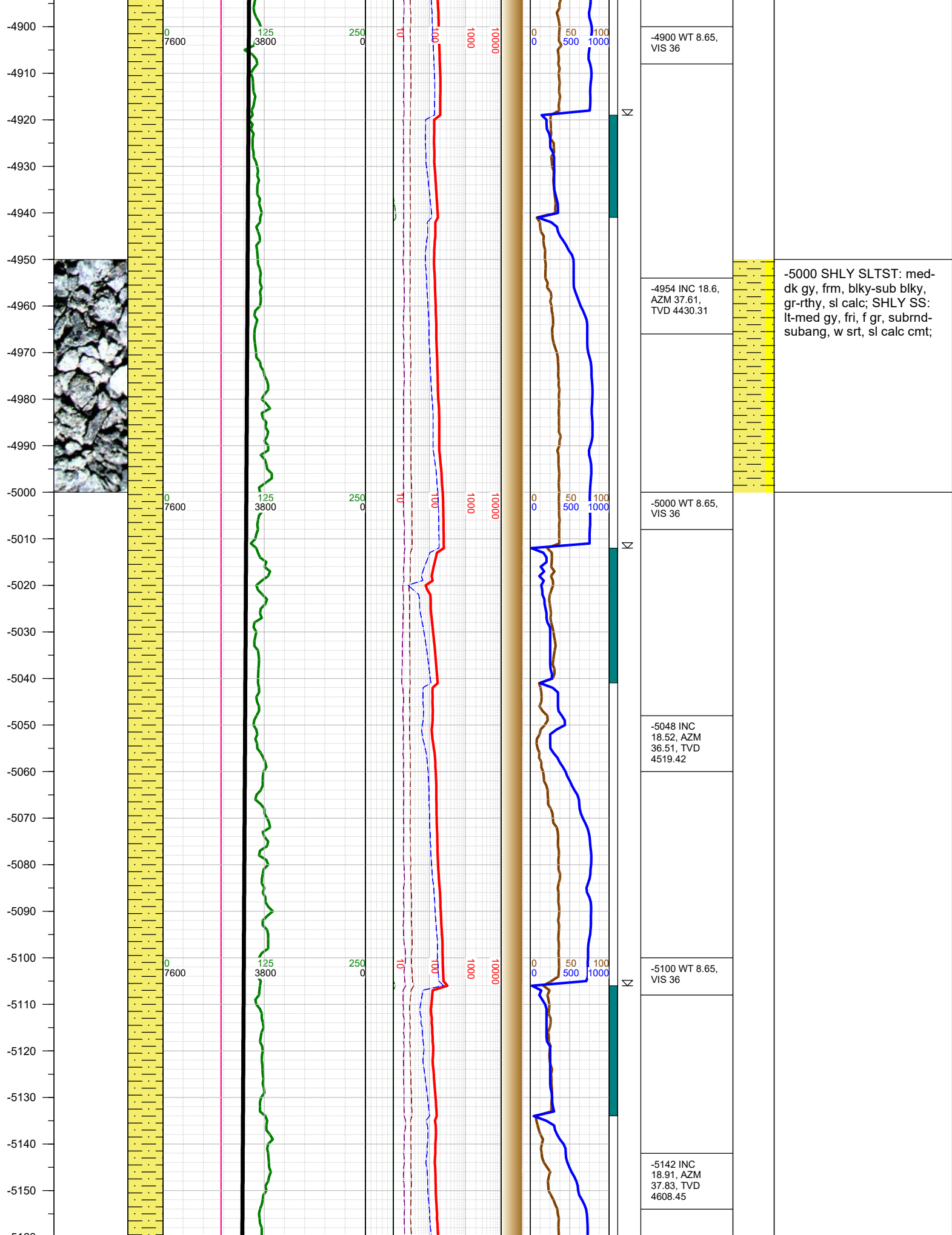
#### LEGEND

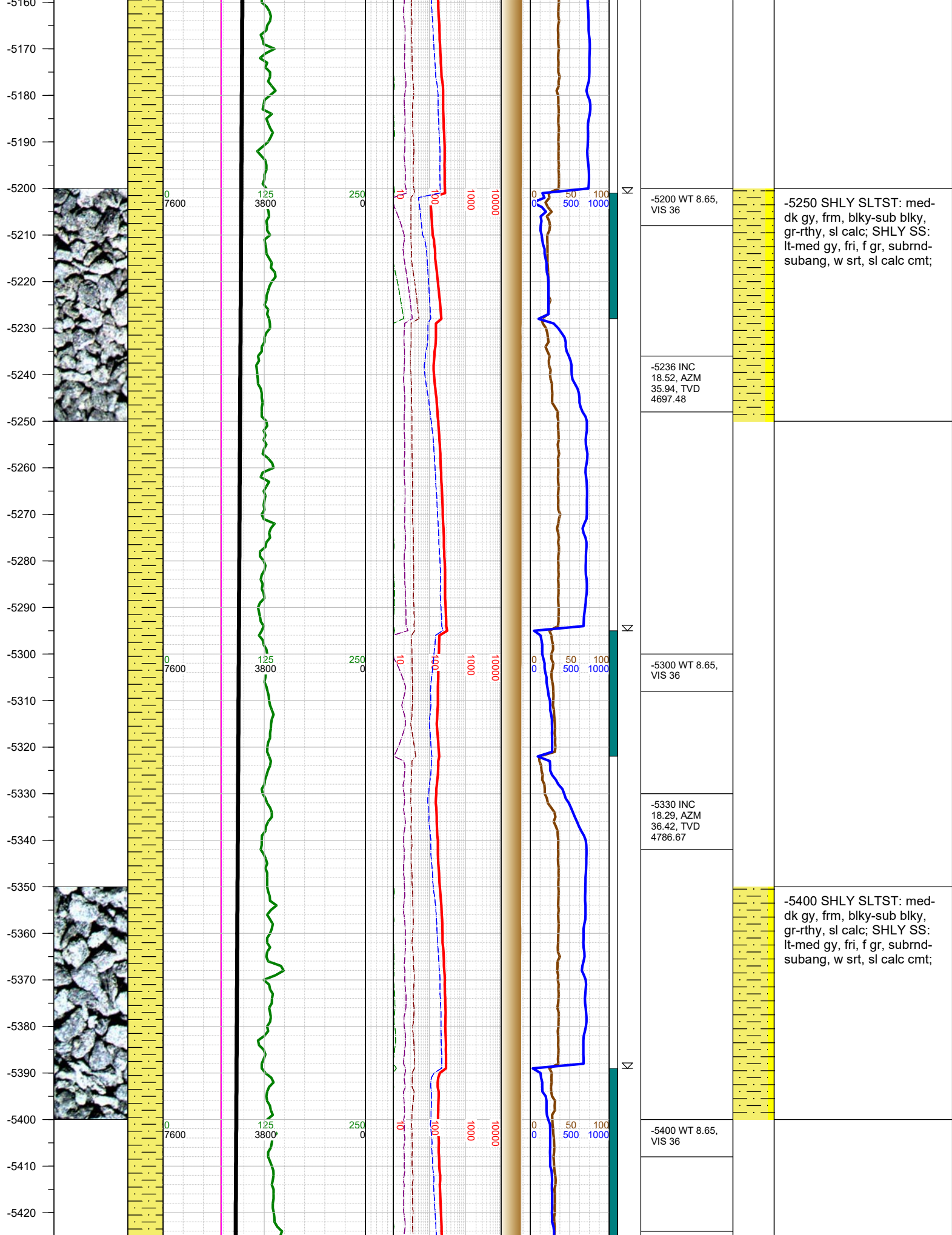


FORMATION CONNECTION MIDNIGHT NEW BIT GAS SHOW FAULT

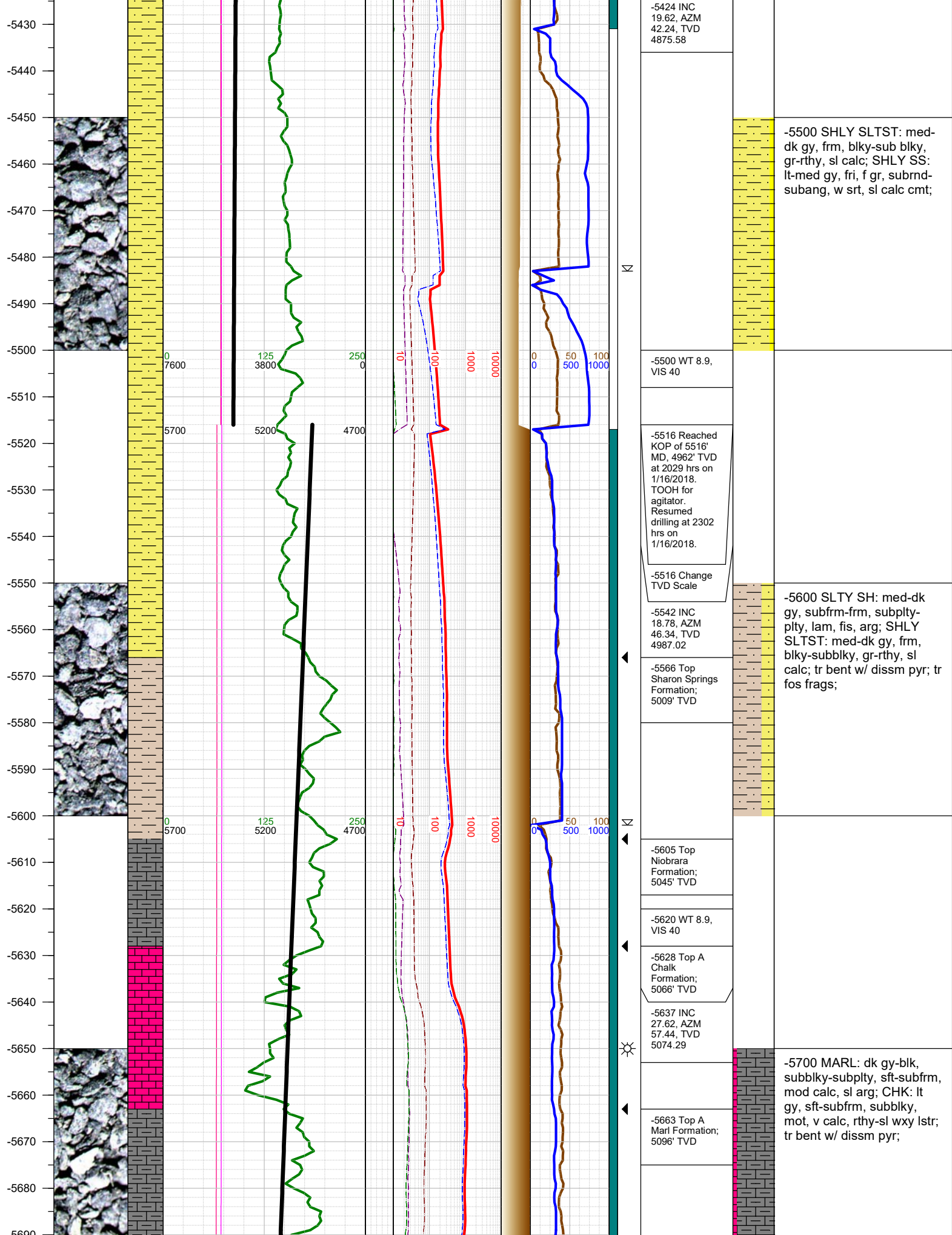


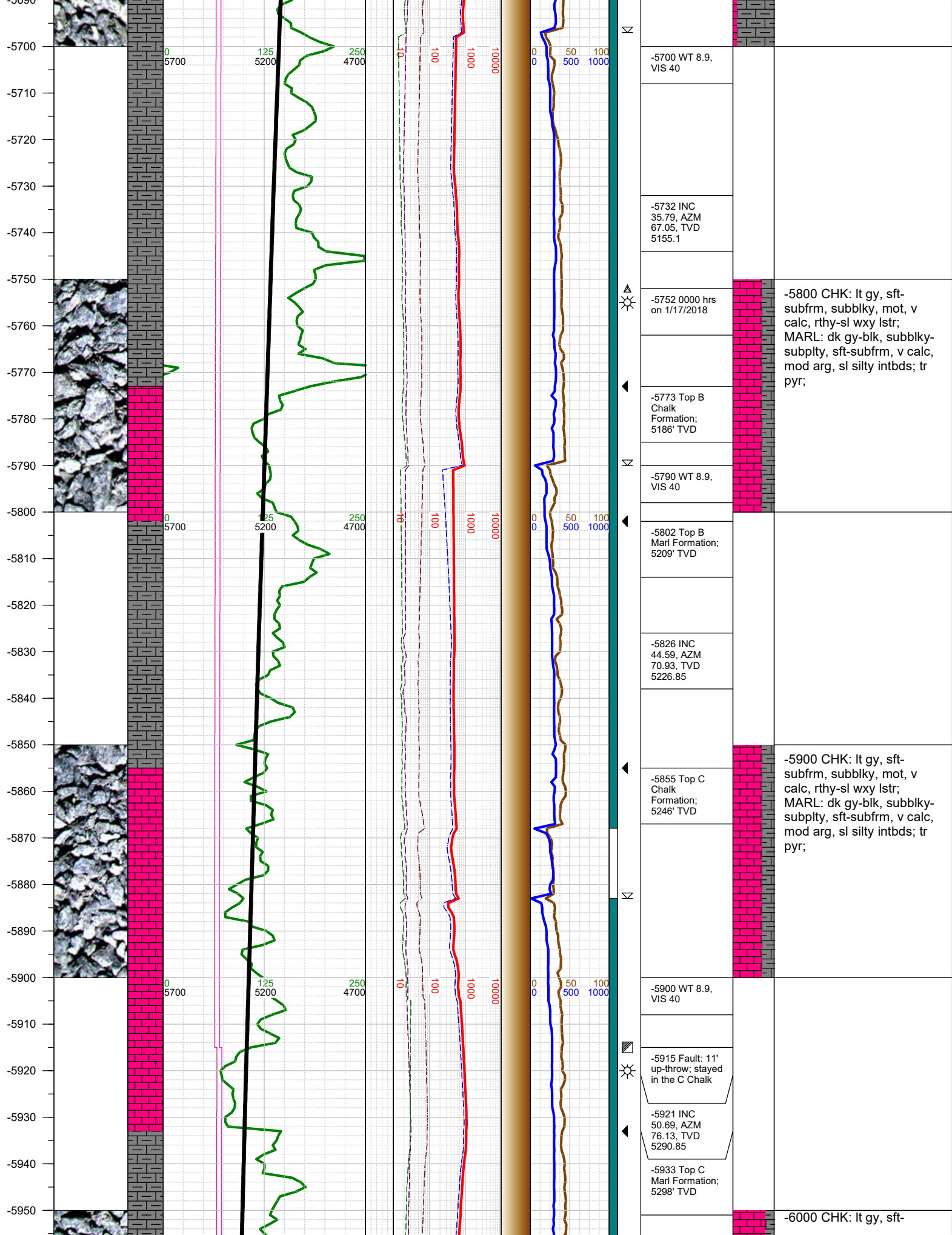


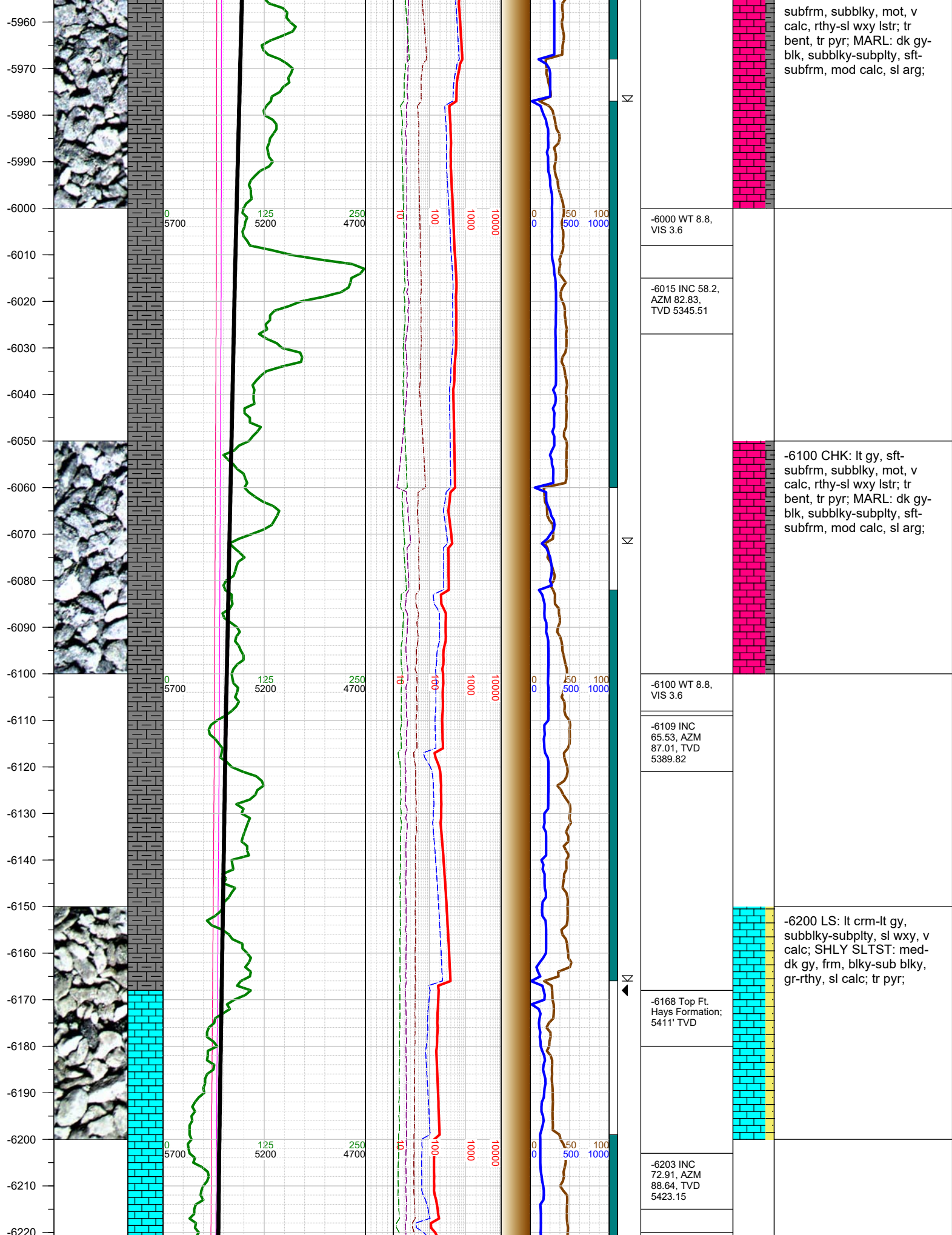




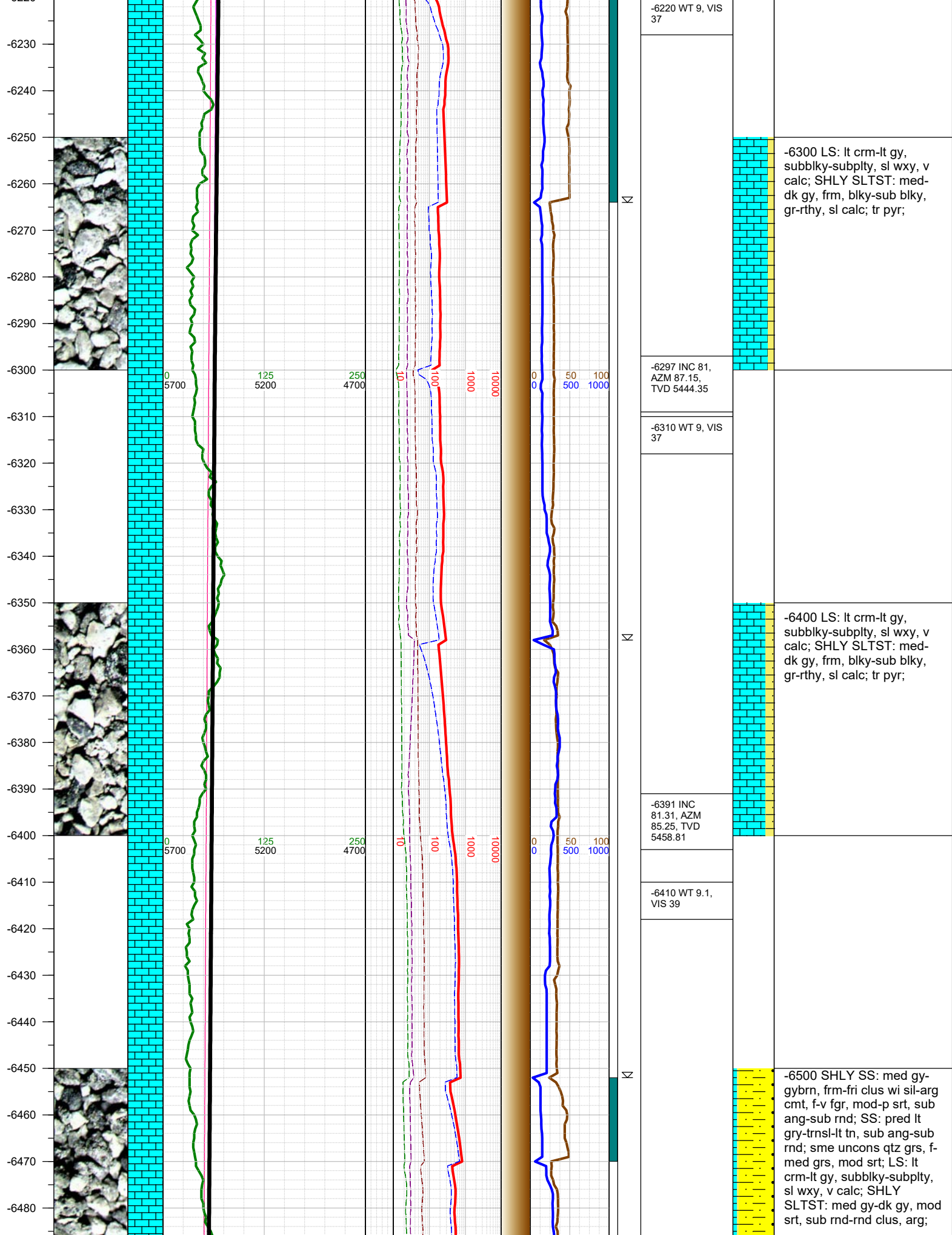




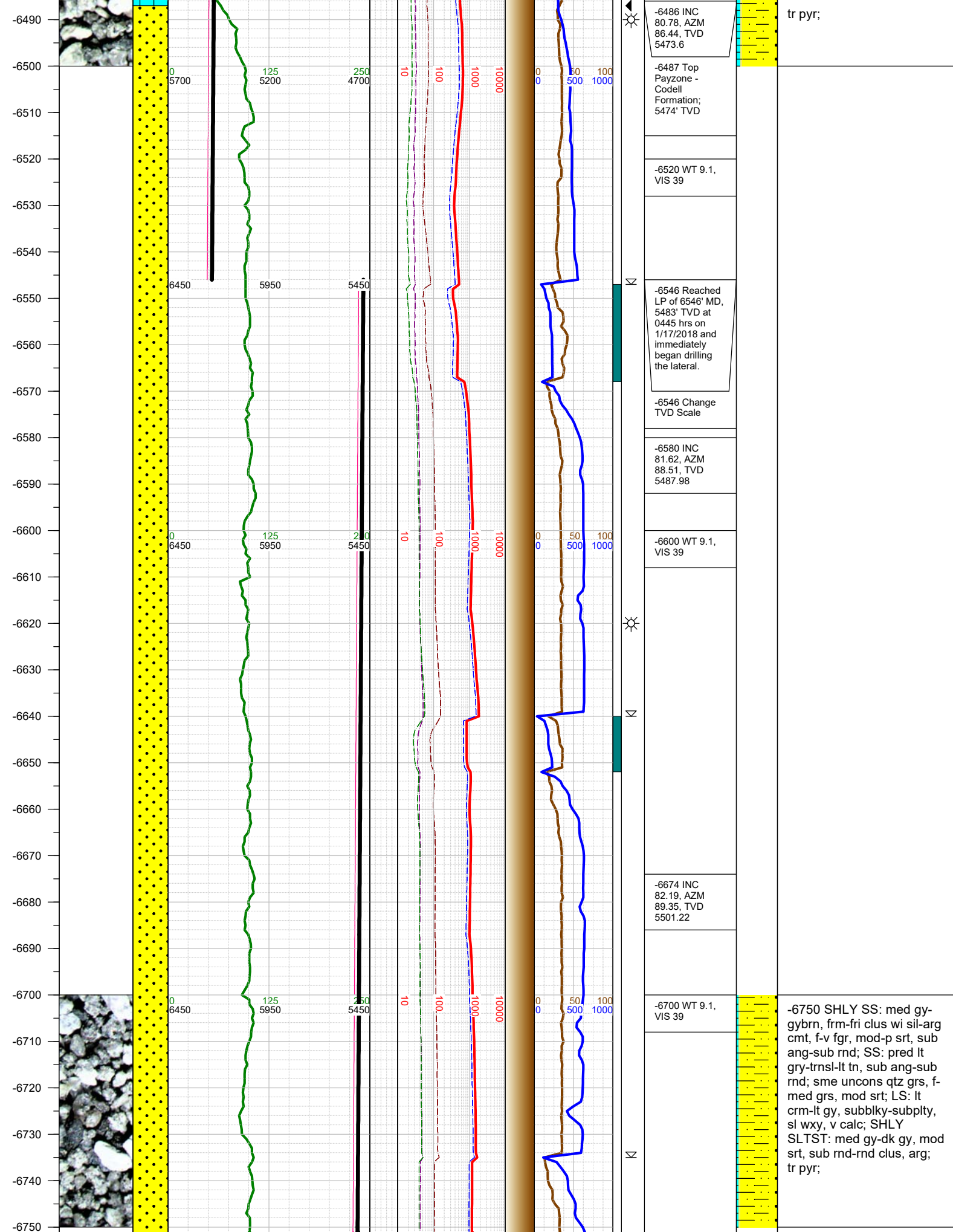


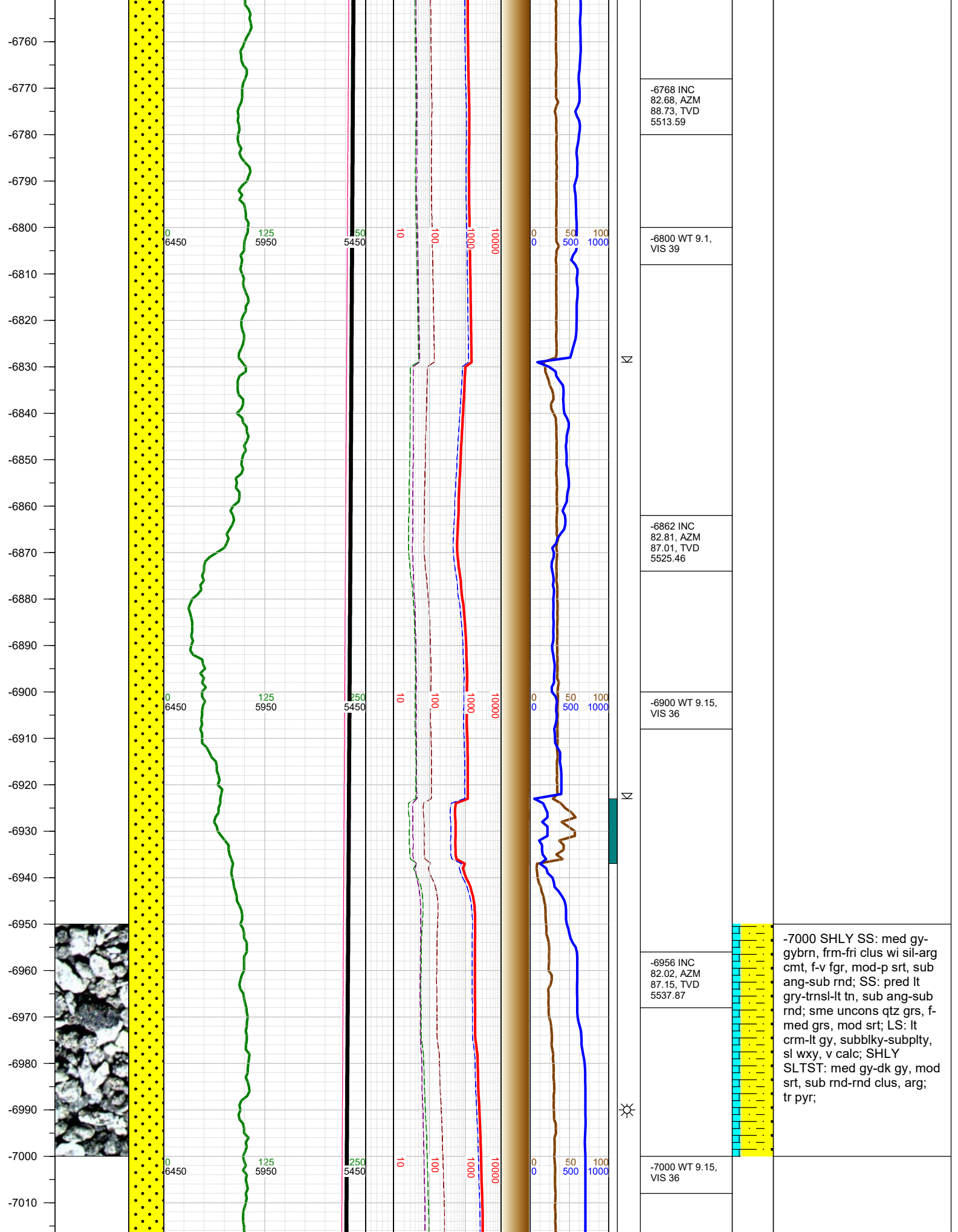


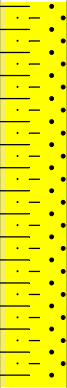
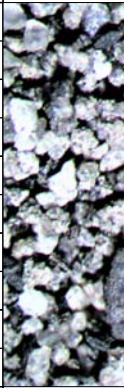
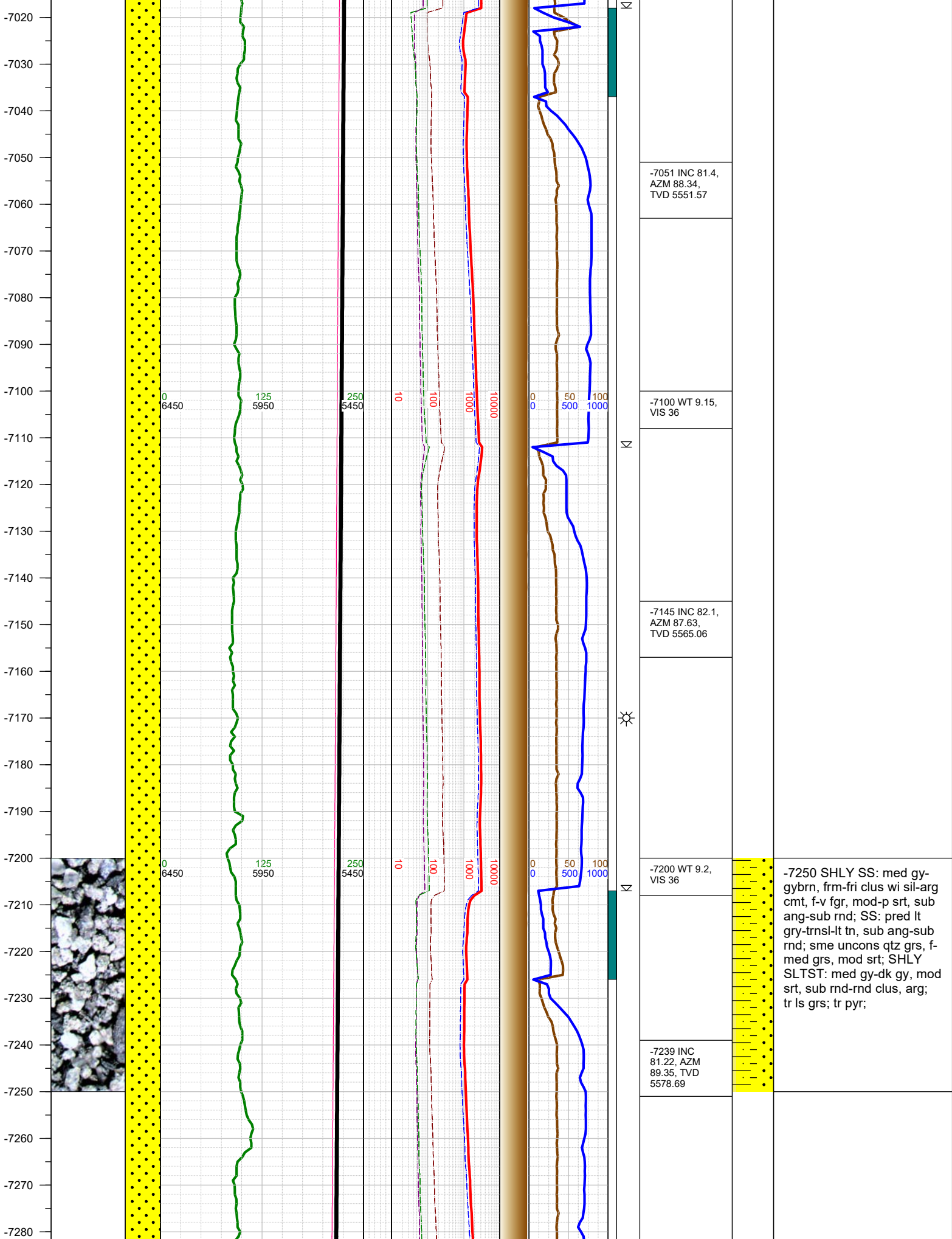






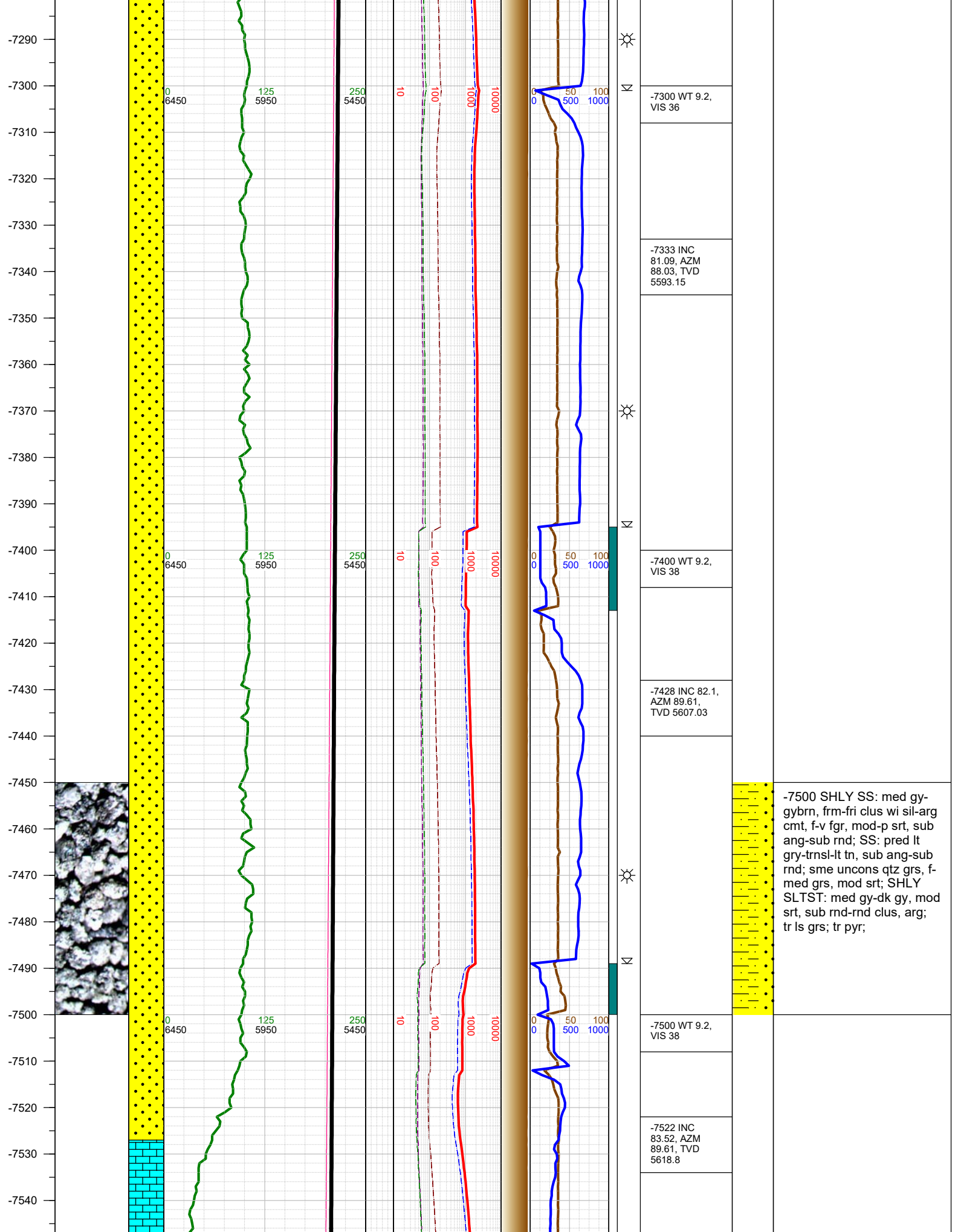




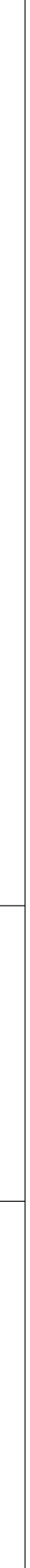
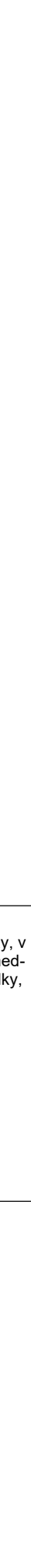
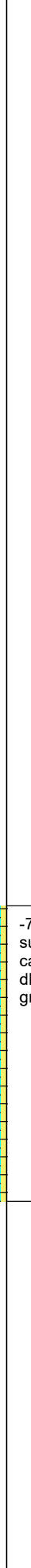
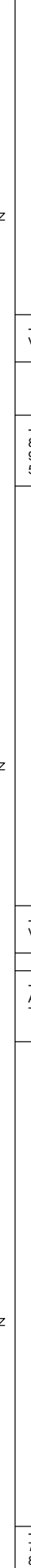
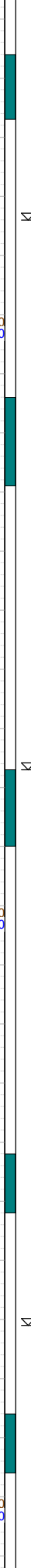
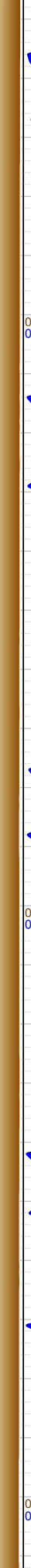
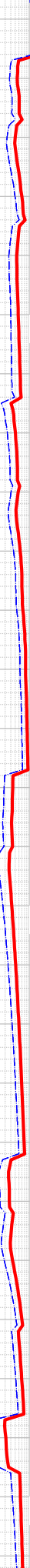
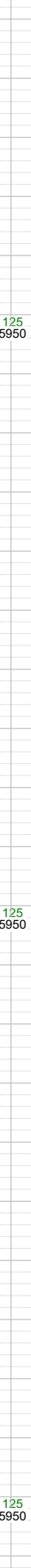
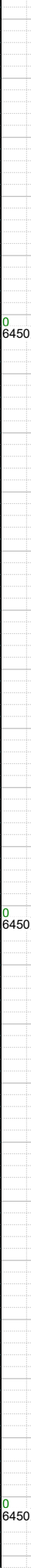
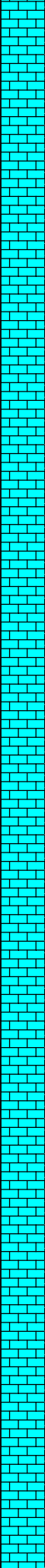
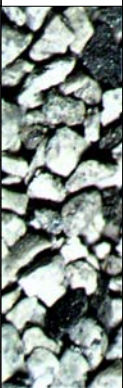


-7250 SHLY SS: med gy-gybrn, frm-fri clus wi sil-arg cmt, f-v fgr, mod-p srt, sub ang-sub rnd; SS: pred lt gry-trns-lt tn, sub ang-sub rnd; sme unconsl qtz grs, f-med grs, mod srt; SHLY SLTST: med gy-dk gy, mod srt, sub rnd-rnd clus, arg; tr ls grs; tr pyr;





-7550  
-7560  
-7570  
-7580  
-7590  
-7600  
-7610  
-7620  
-7630  
-7640  
-7650  
-7660  
-7670  
-7680  
-7690  
-7700  
-7710  
-7720  
-7730  
-7740  
-7750  
-7760  
-7770  
-7780  
-7790  
-7800  
-7810



N

N

N

N

N

-7600 WT 9.2,  
VIS 37

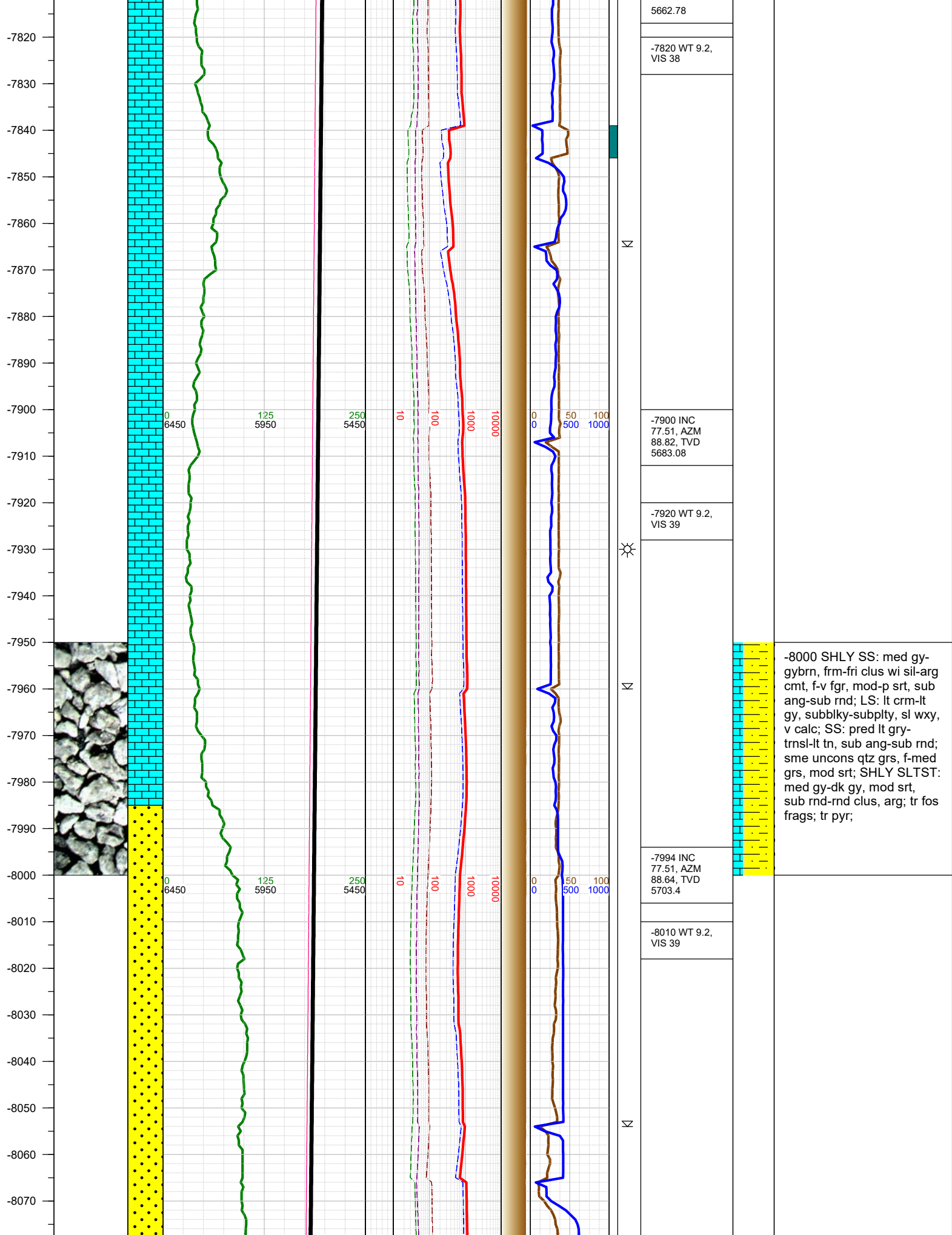
-7617 INC  
81.88, AZM  
90.45, TVD  
5630.87

-7700 WT 9.2,  
VIS 37

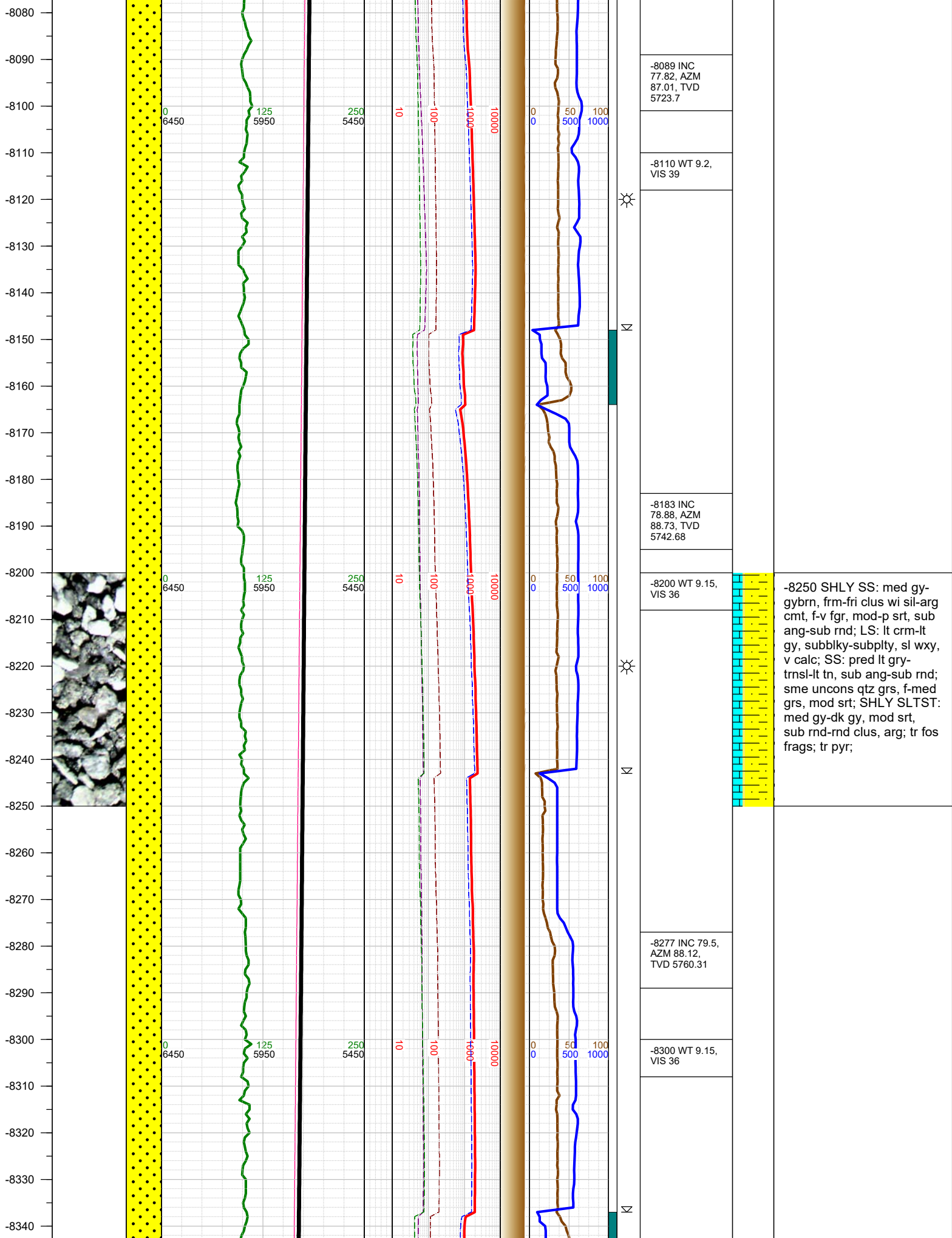
-7711 INC 80.6,  
AZM 90.85,  
TVD 5645.18

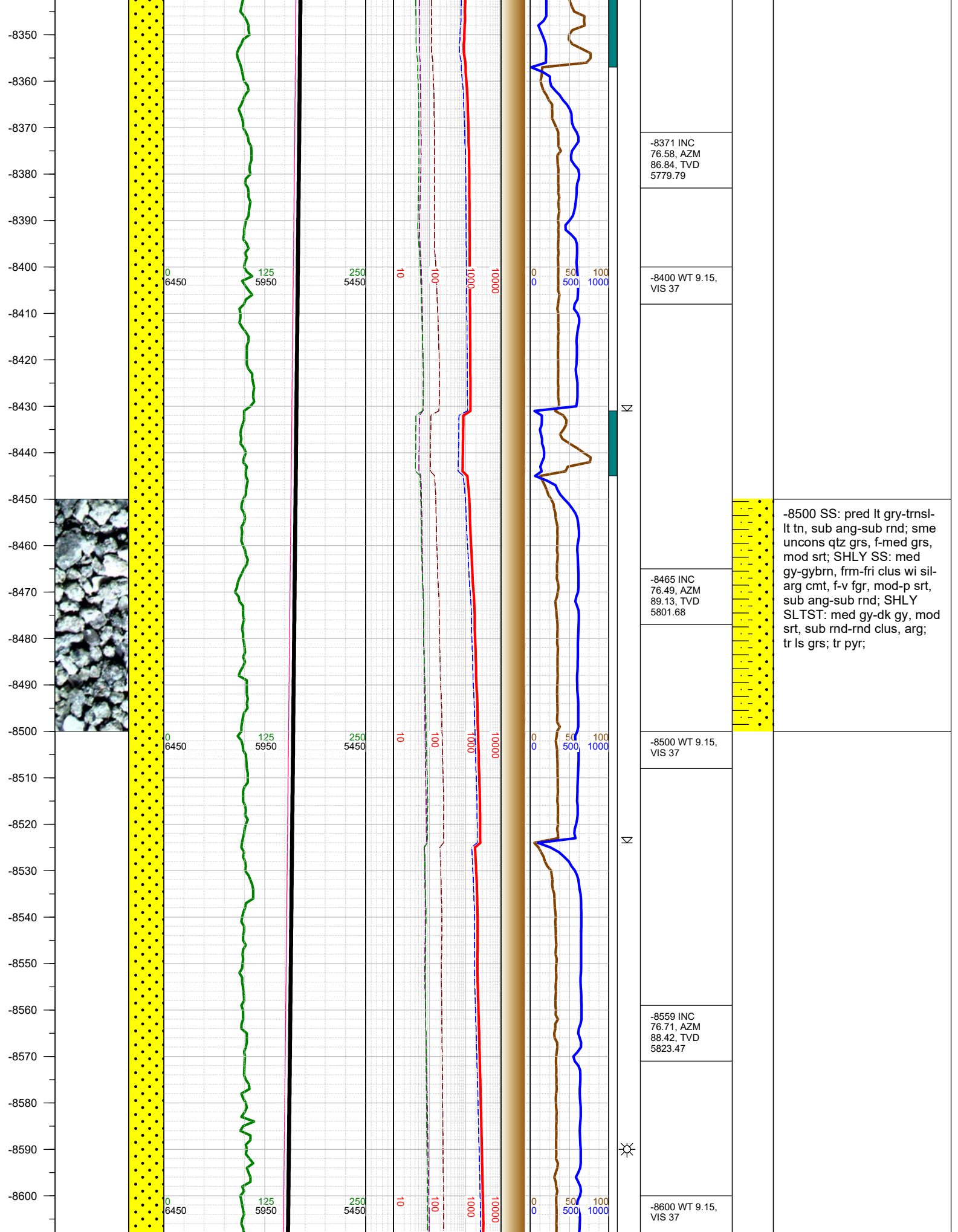
-7805 INC  
77.82, AZM  
89.44, TVD

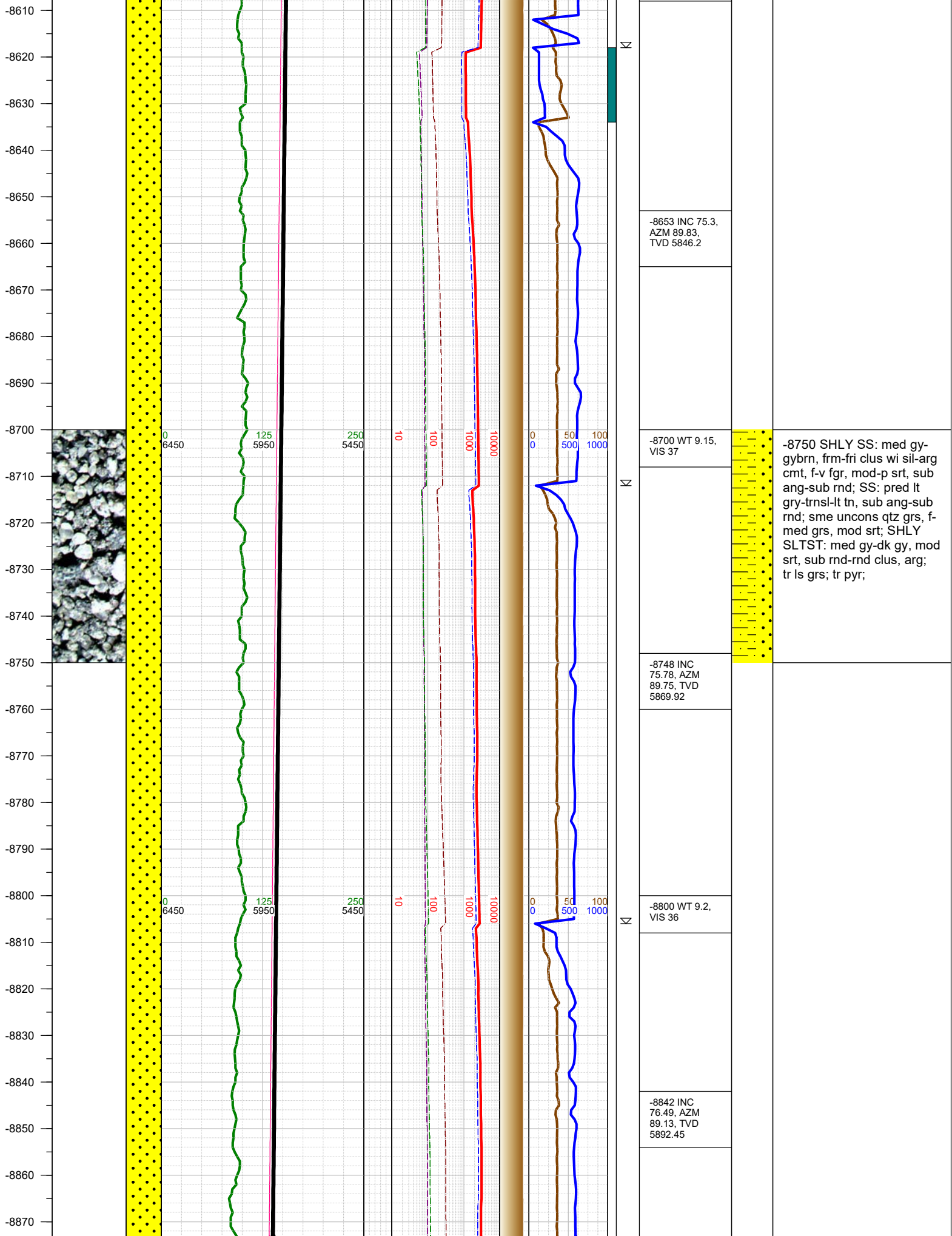
-7750 LS: lt crm-lt gy,  
subblky-subplty, sl wxy, v  
calc; SHLY SLTST: med-  
dk gy, frm, blk-sub blk,  
gr-rthy, sl calc;



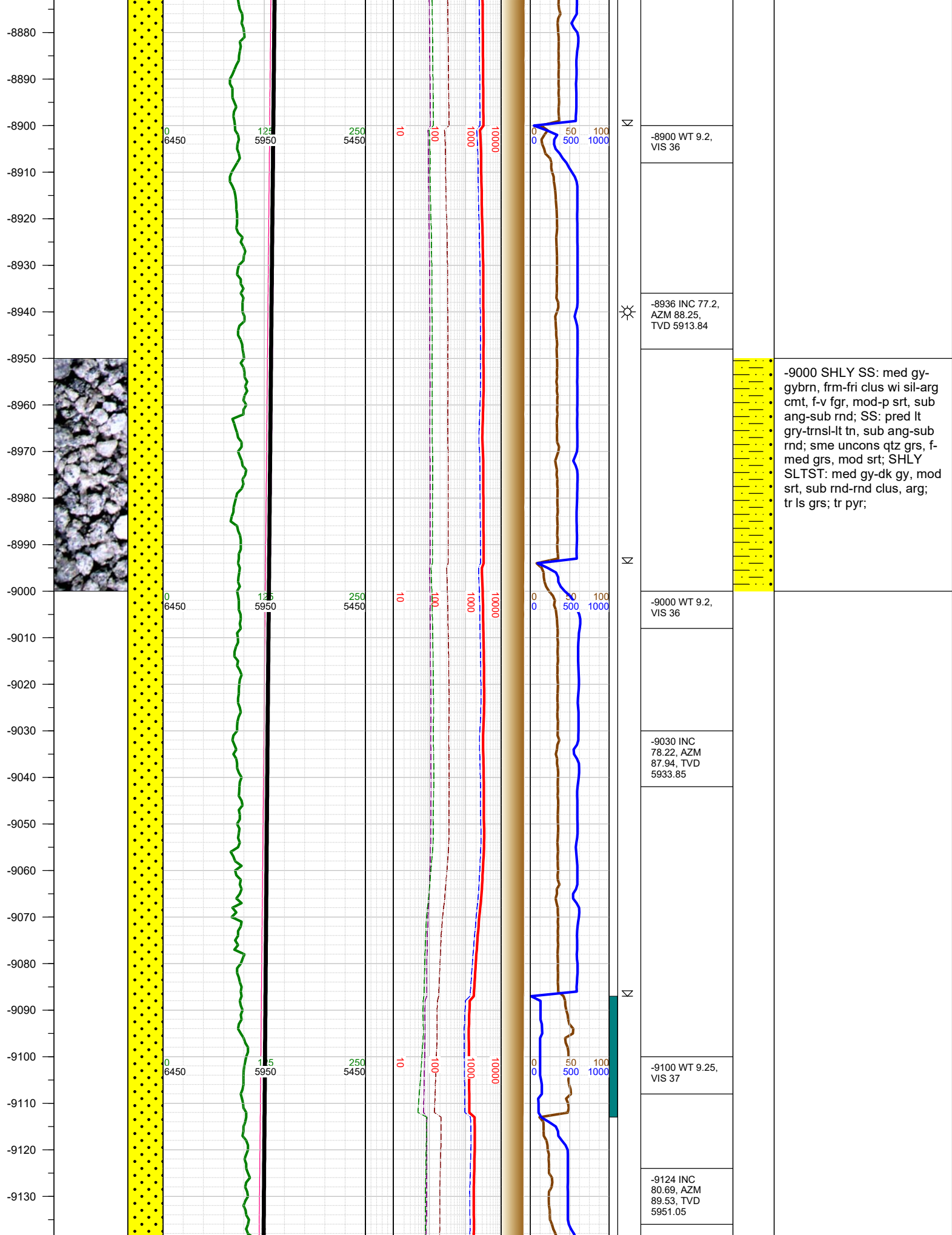


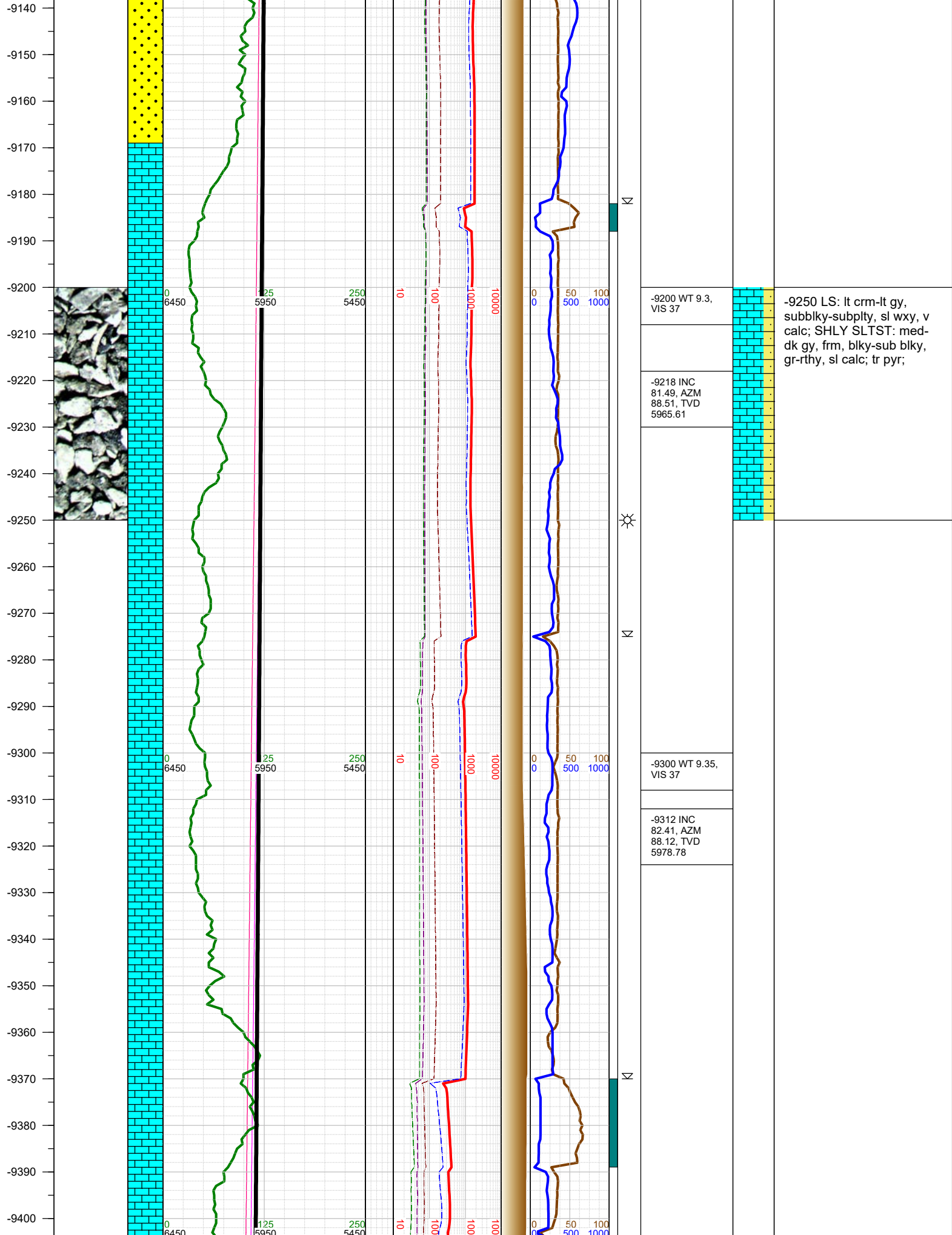


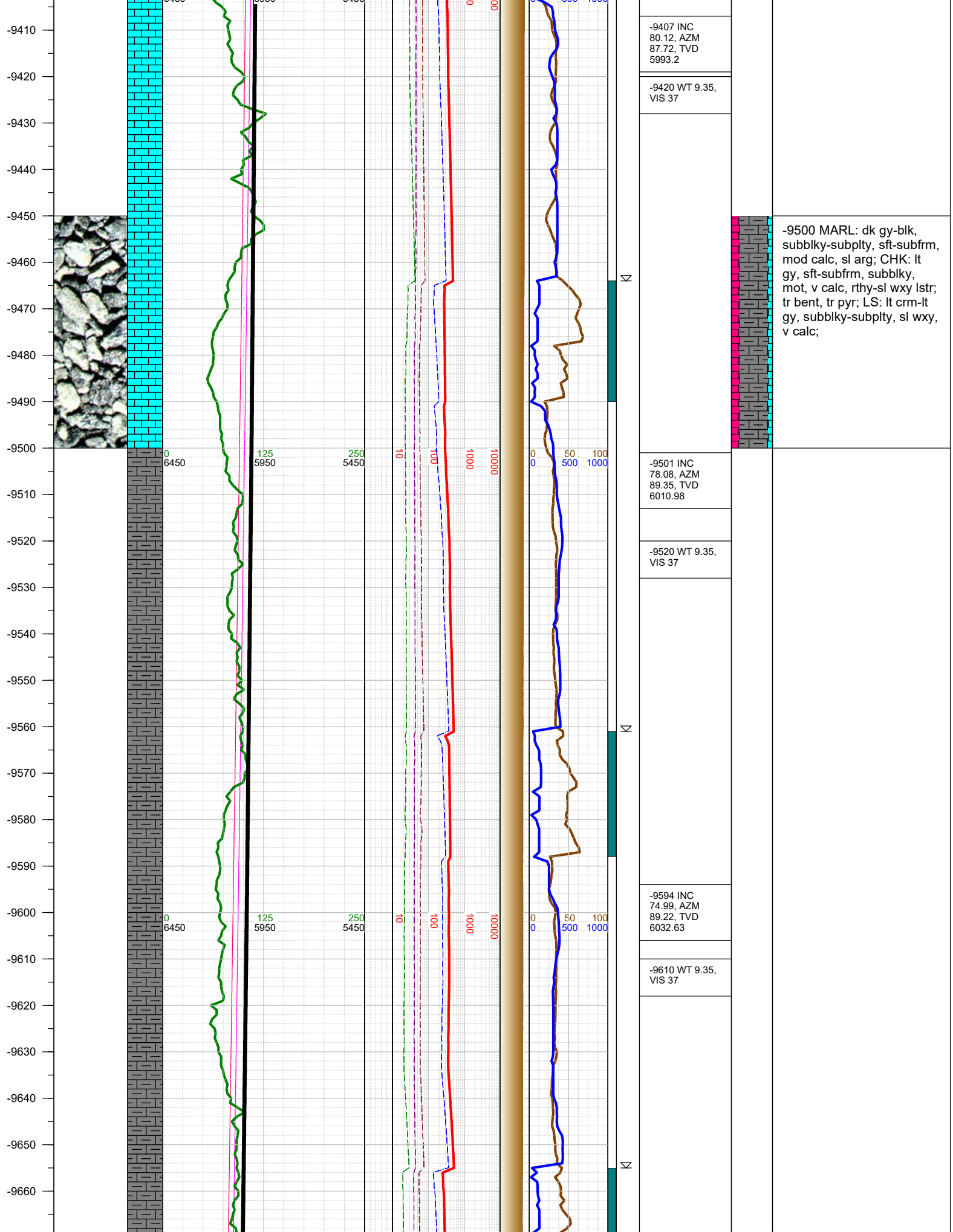




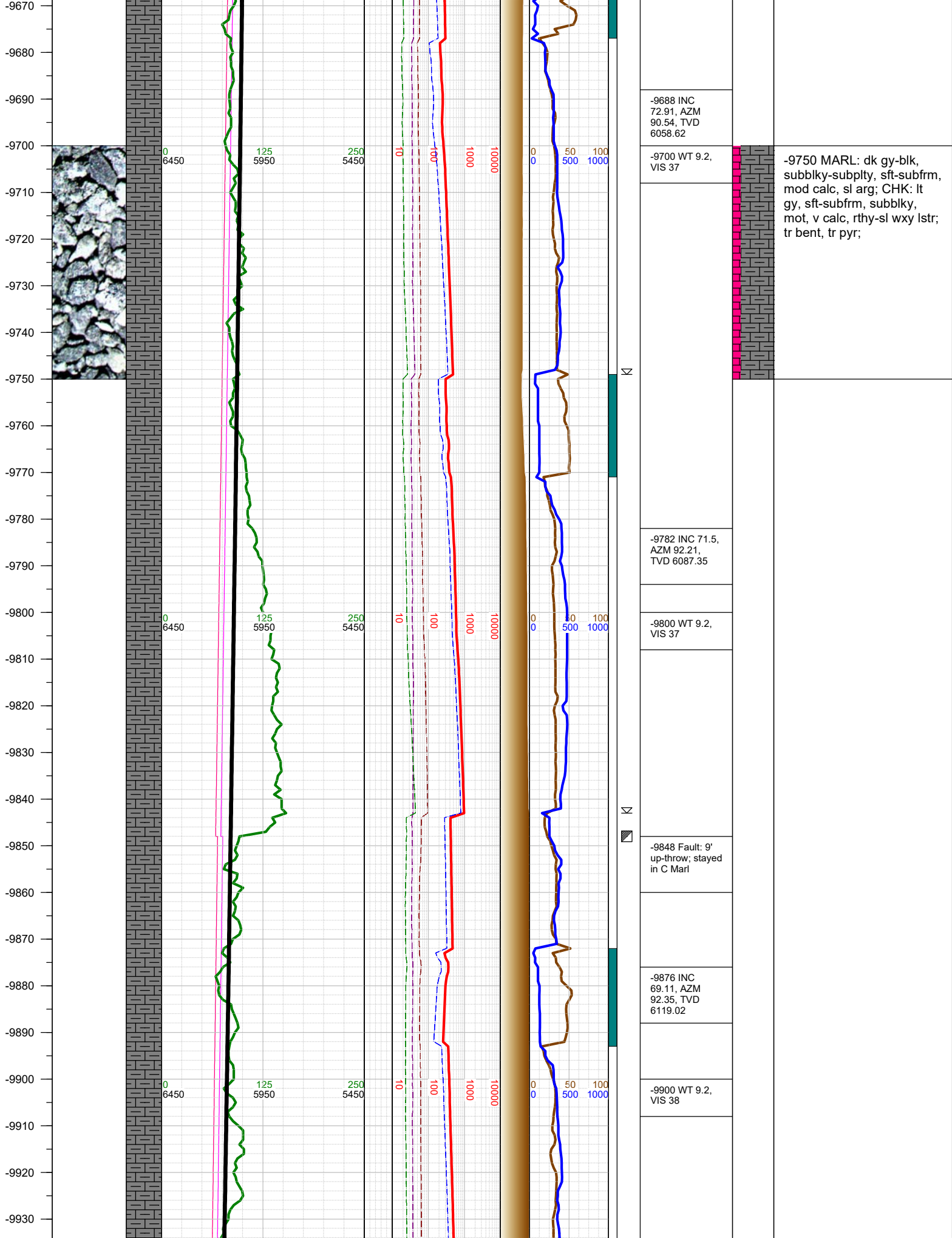




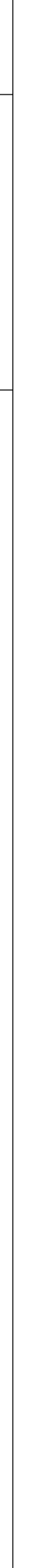
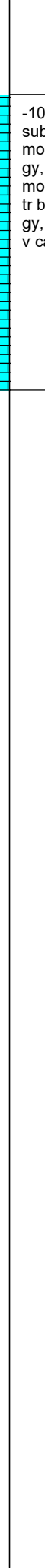
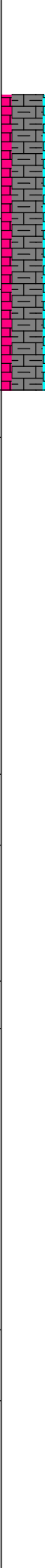
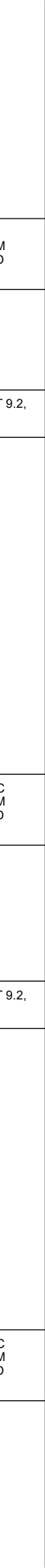
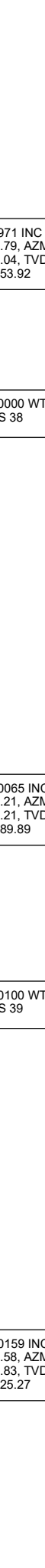
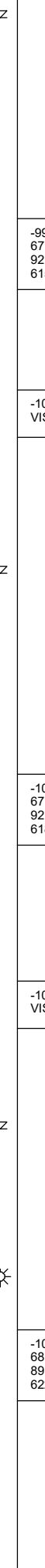
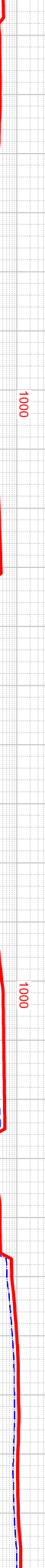
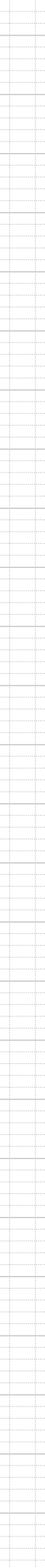
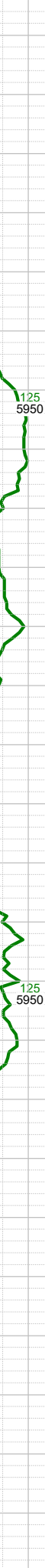
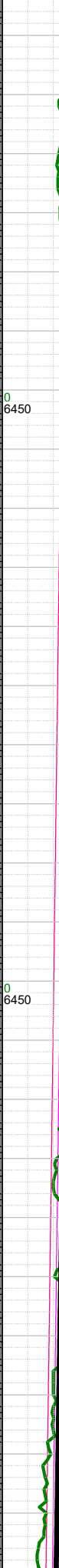
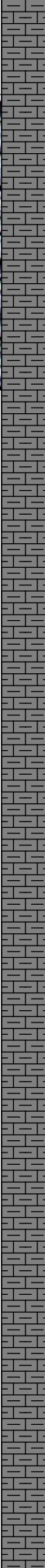
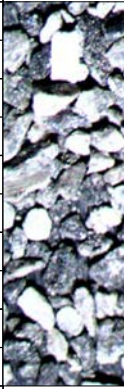








-9940  
-9950  
-9960  
-9970  
-9980  
-9990  
-10000  
-10010  
-10020  
-10030  
-10040  
-10050  
-10060  
-10070  
-10080  
-10090  
-10100  
-10110  
-10120  
-10130  
-10140  
-10150  
-10160  
-10170  
-10180  
-10190



Σ

Σ

Σ

☀

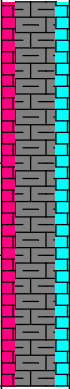
-9971 INC  
67.79, AZM  
92.04, TVD  
6153.92

-10000 WT 9.2,  
VIS 38

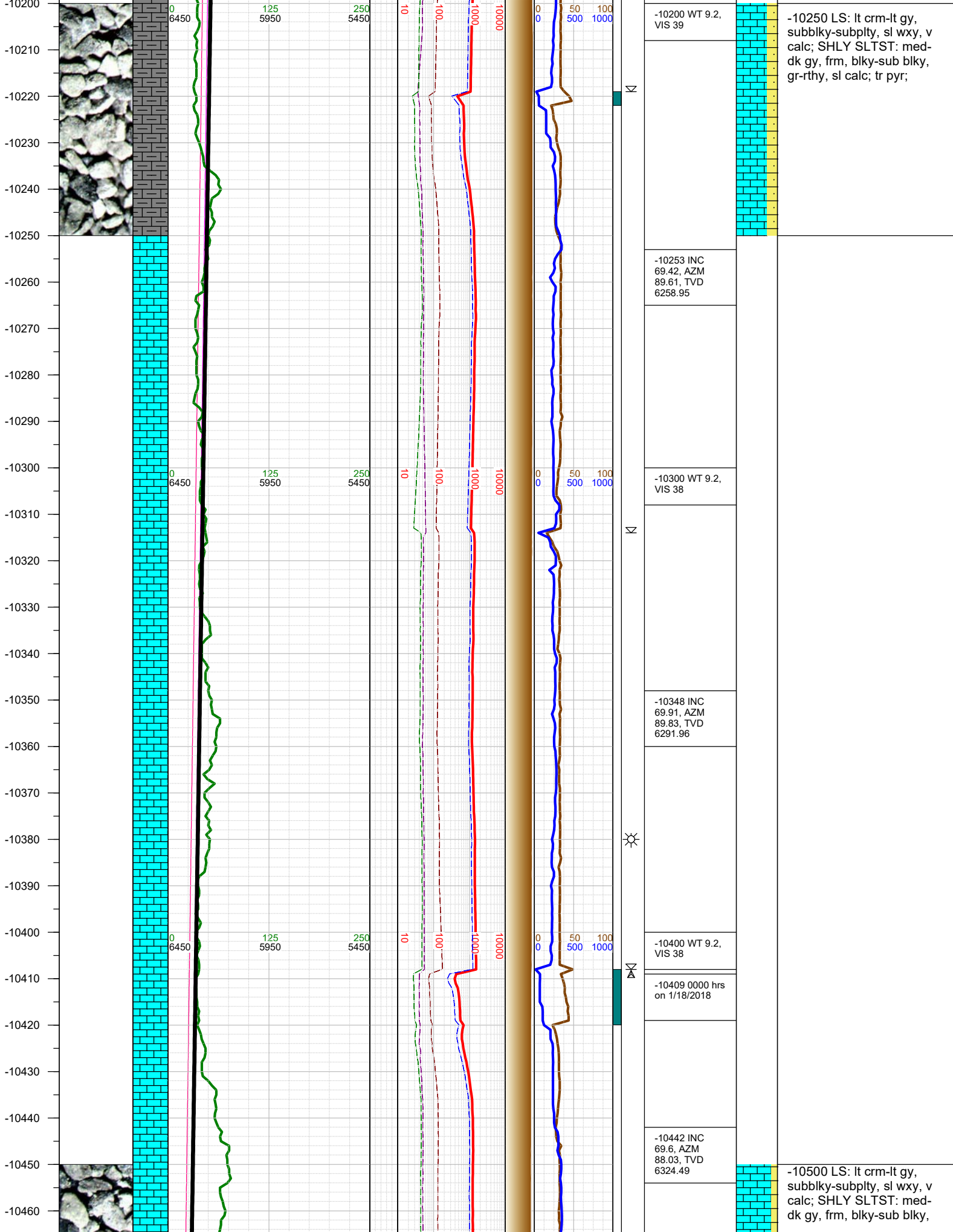
-10065 INC  
67.21, AZM  
92.21, TVD  
6189.89

-10100 WT 9.2,  
VIS 39

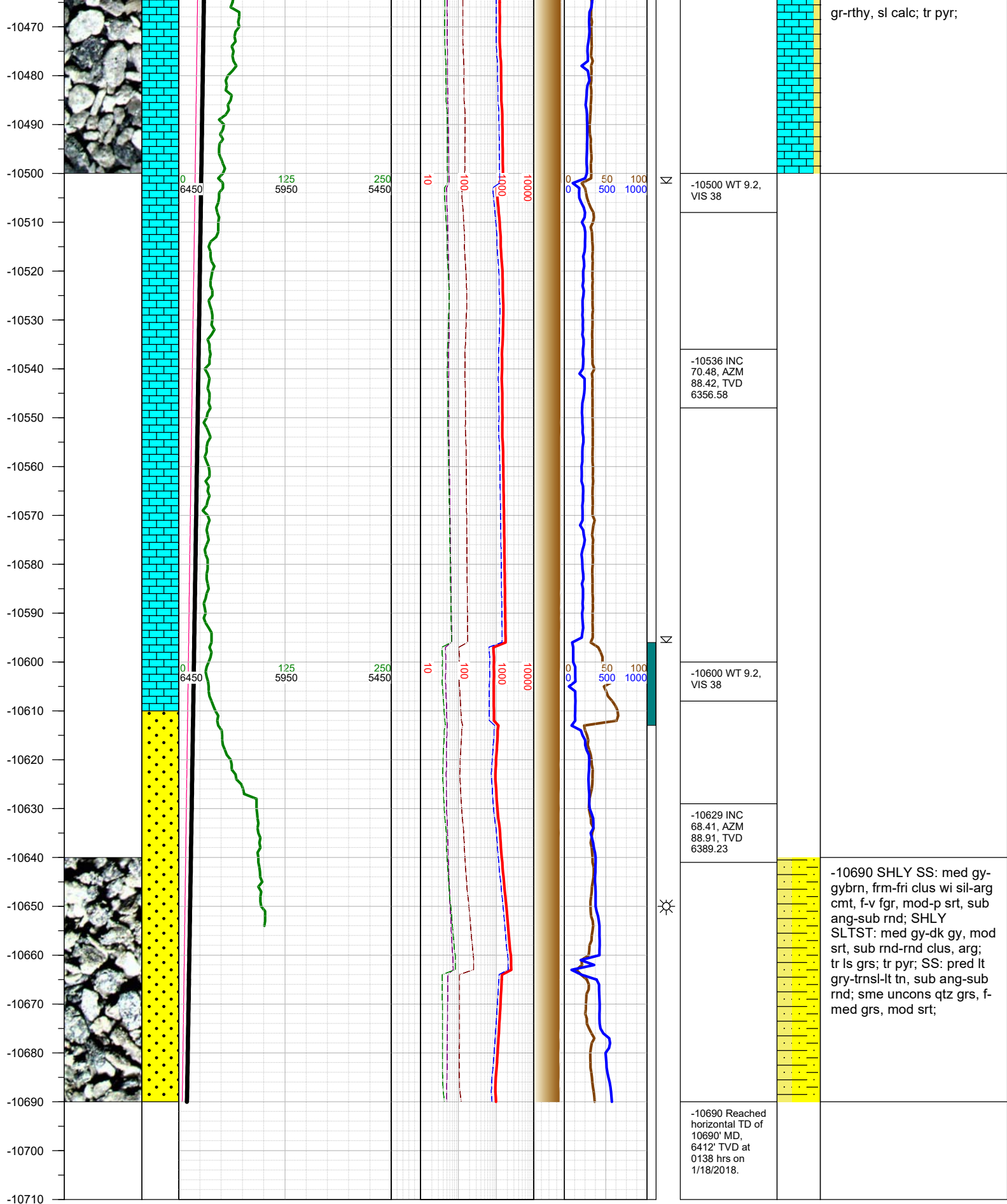
-10159 INC  
68.58, AZM  
89.83, TVD  
6225.27



-10000 MARL: dk gy-blk,  
subbly-subply, sft-subfrm,  
mod calc, sl arg; CHK: lt  
gy, sft-subfrm, subbly,  
mot, v calc, rthy-sl wxy lstr;  
tr bent, tr pyr; LS: lt crm-lt  
gy, subbly-subply, sl wxy,  
v calc;







TOTAL DEPTH = 10690'

Thank you for using Earth Science Agency