

OPERATOR: **Extraction Oil & Gas**

WELL NAME: **Jesser 3E-10-14C**

FIELD NAME: DJ Basin - Wattenberg

DRILLING RIG: Patterson 901

API #: 05-123-45667

LAT/LONG: 40.341707, -104.996995
SURFACE HOLE: NWSW S3-T4N-R68W, 2314' FSL, 616' FWL
BOTTOM HOLE: S3-T4N-R68W, 990' FSL, 460' FEL

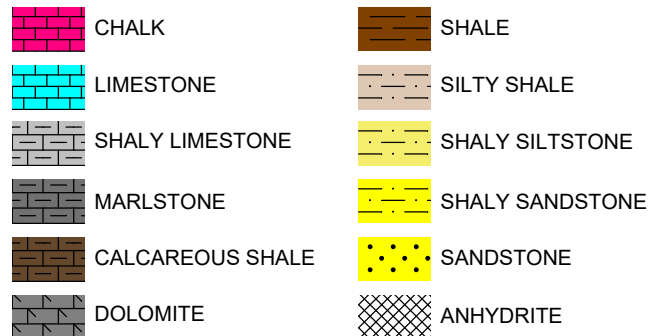


Earth Science Agency, LLC

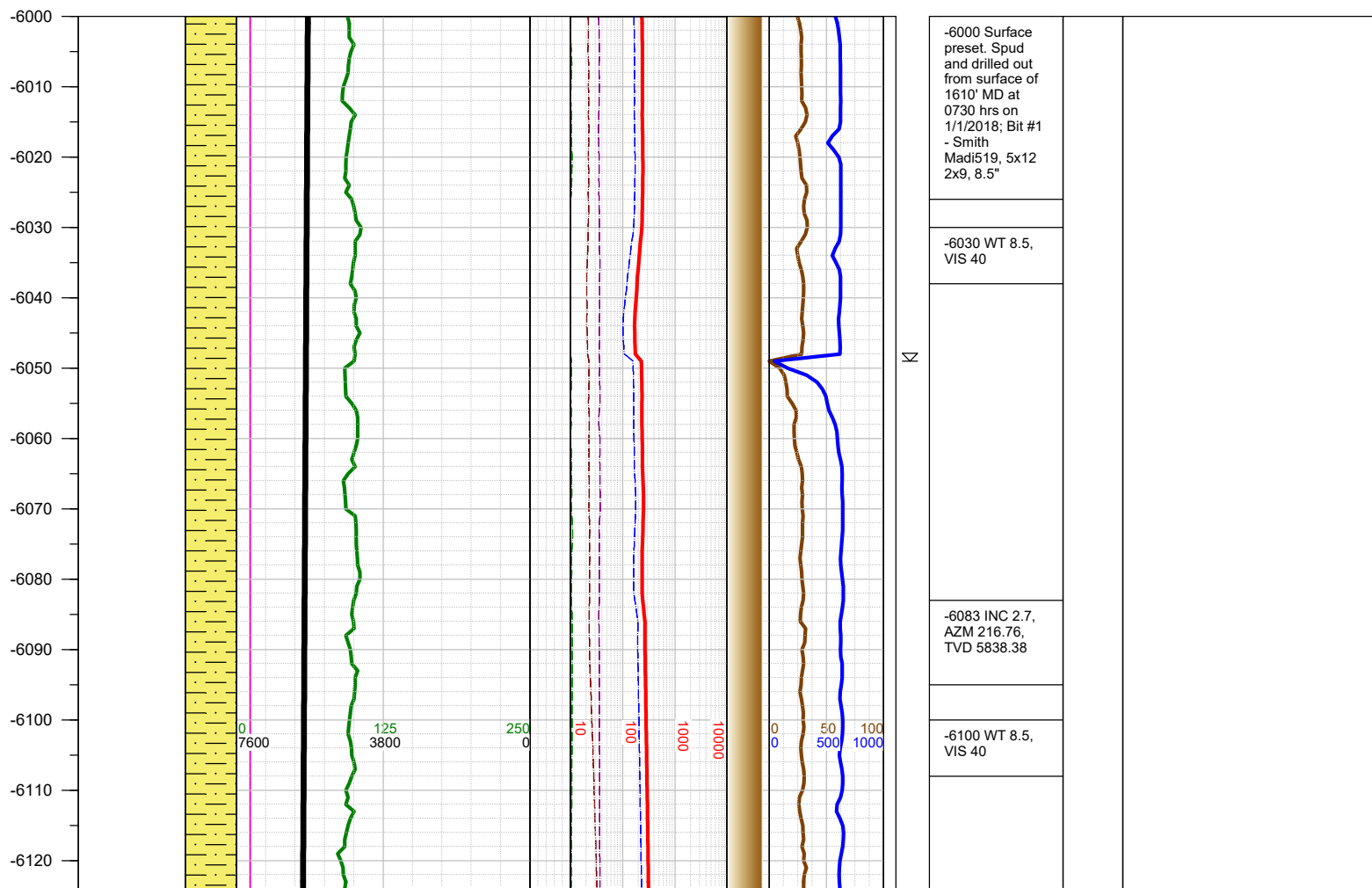
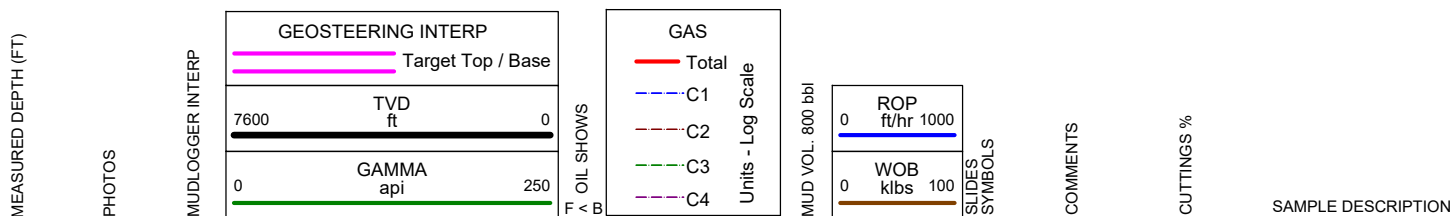
COUNTY: Weld
STATE: Colorado
GROUND ELEVATION: 5115'
KELLY BUSHING: 5144'
DRILLING FLUID: OBM
TVD VS. MD: 7266' / 12176'
SPUD DATE: January 1, 2018
TD DATE: January 3, 2018

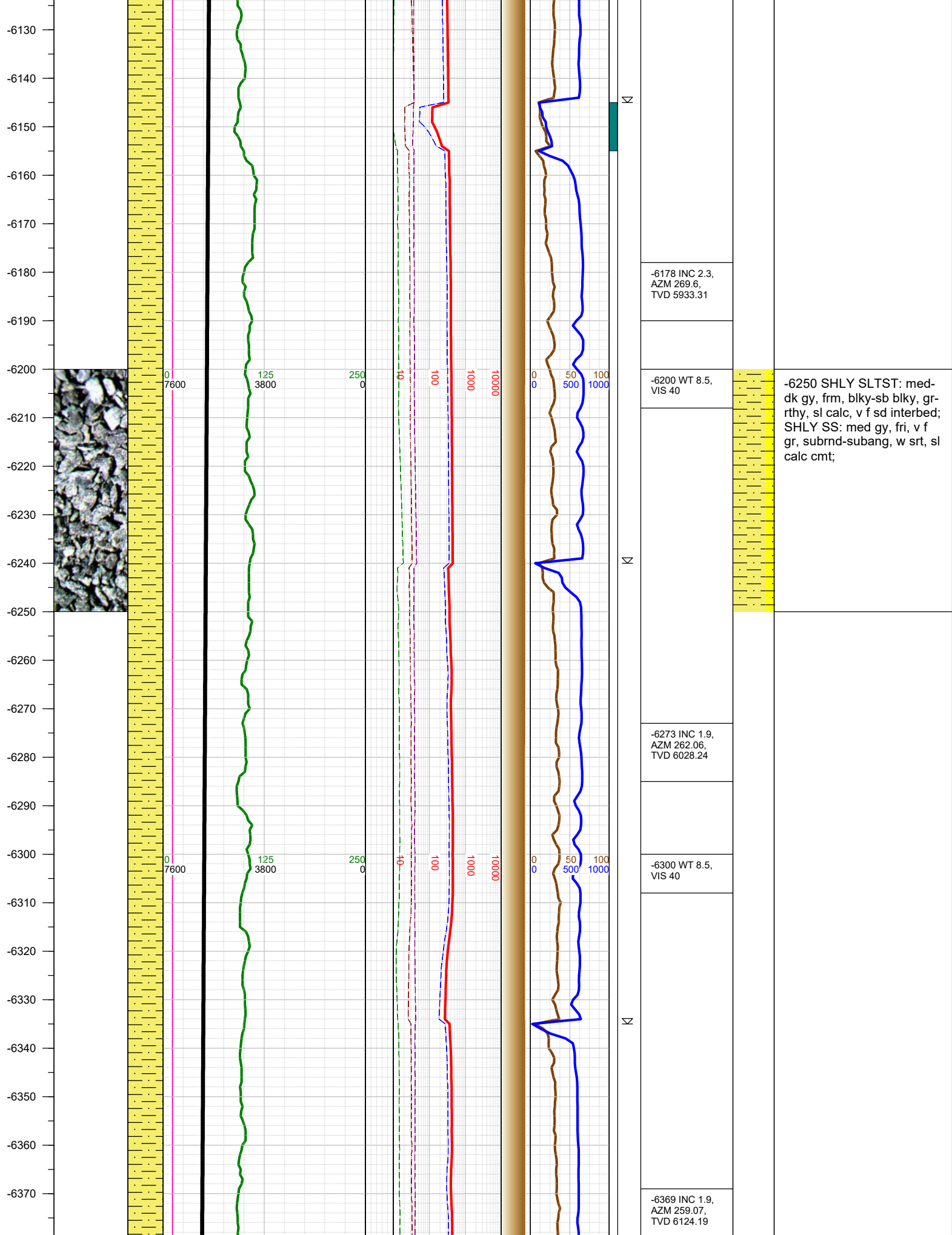
DEPTHS LOGGED: 6000' - 12176'
DATES LOGGED: January 1, 2018 - January 3, 2018
GEOLOGISTS: Blake Eatherton, Dominic Pitre
SCALE: 5" = 100'

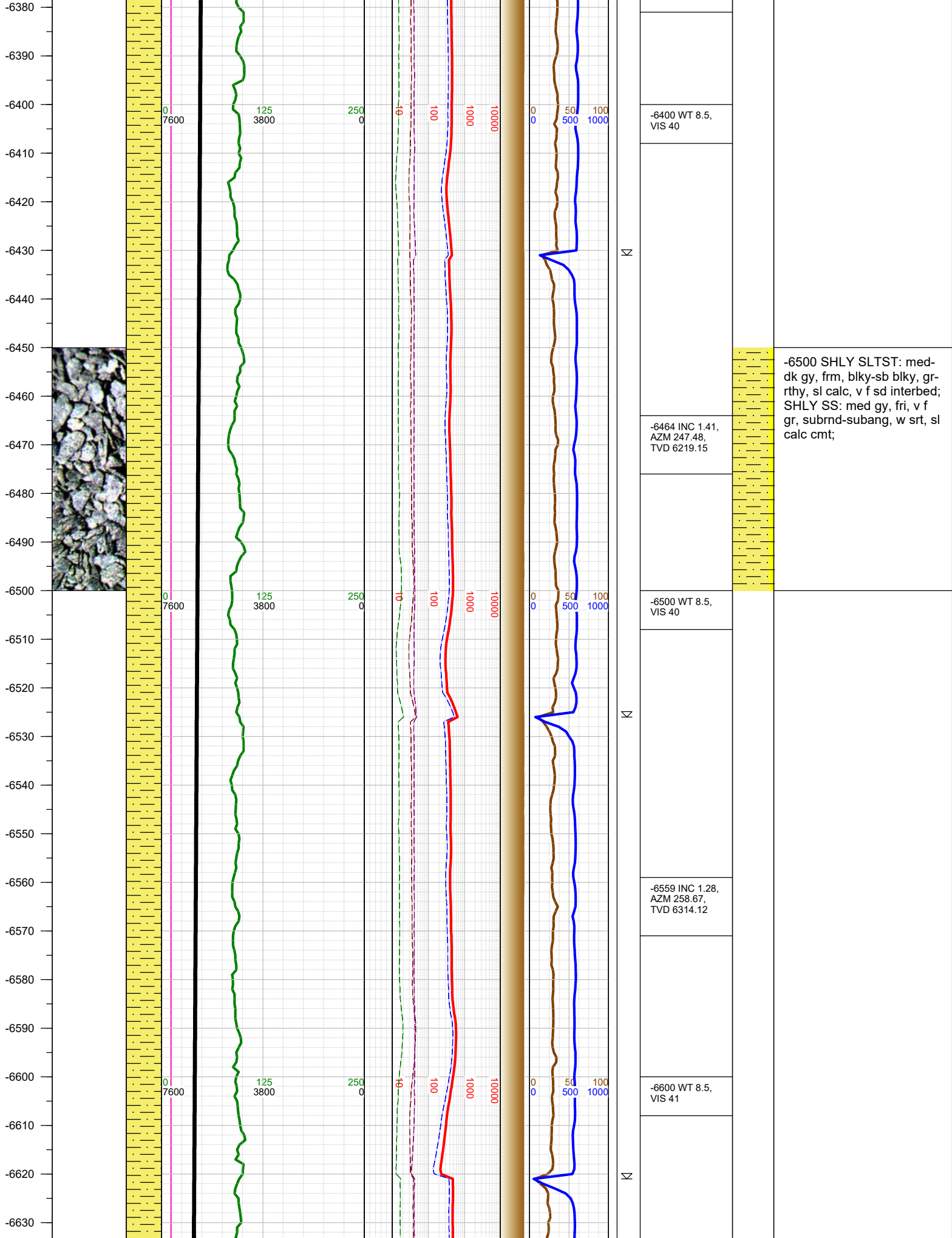
LEGEND

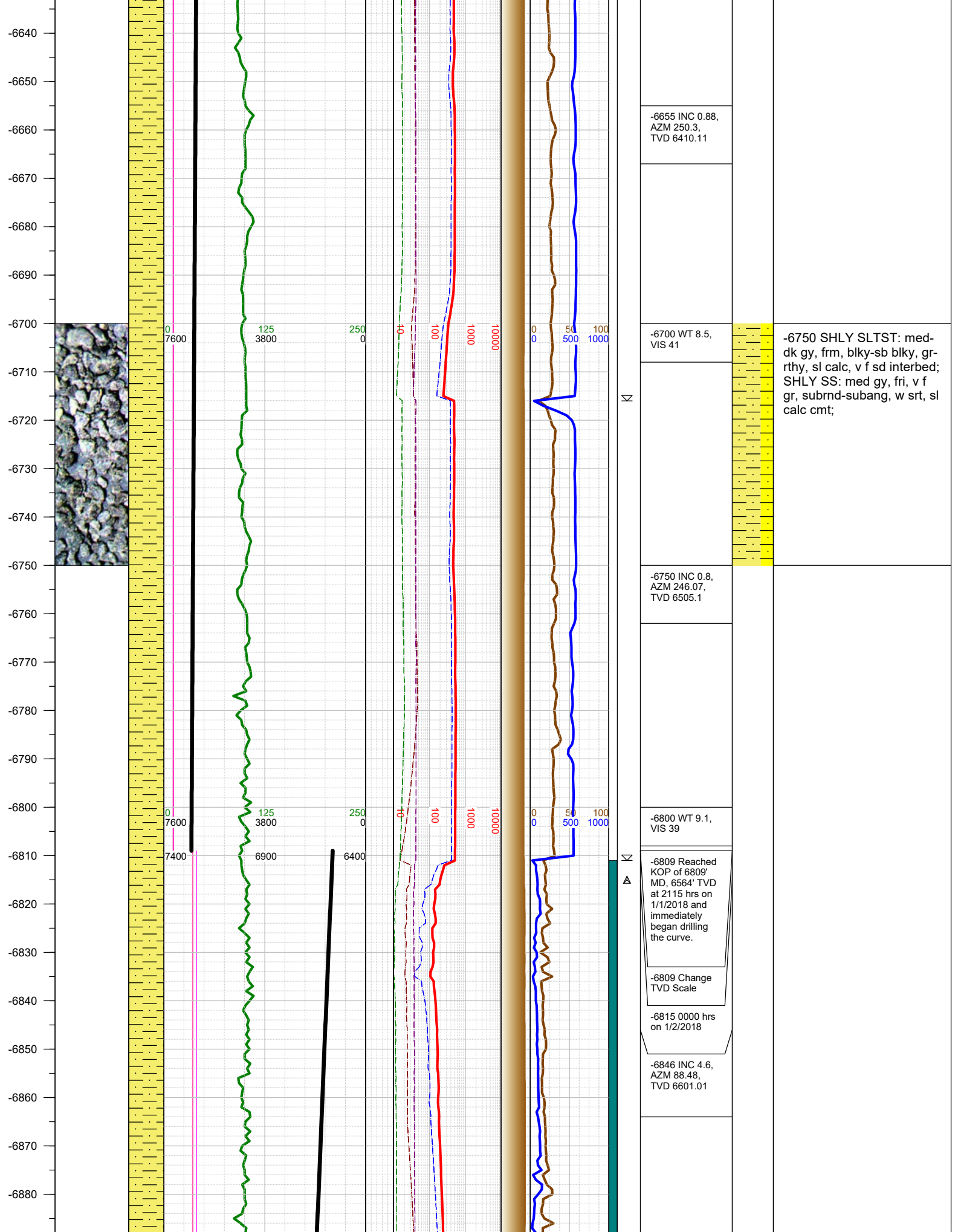


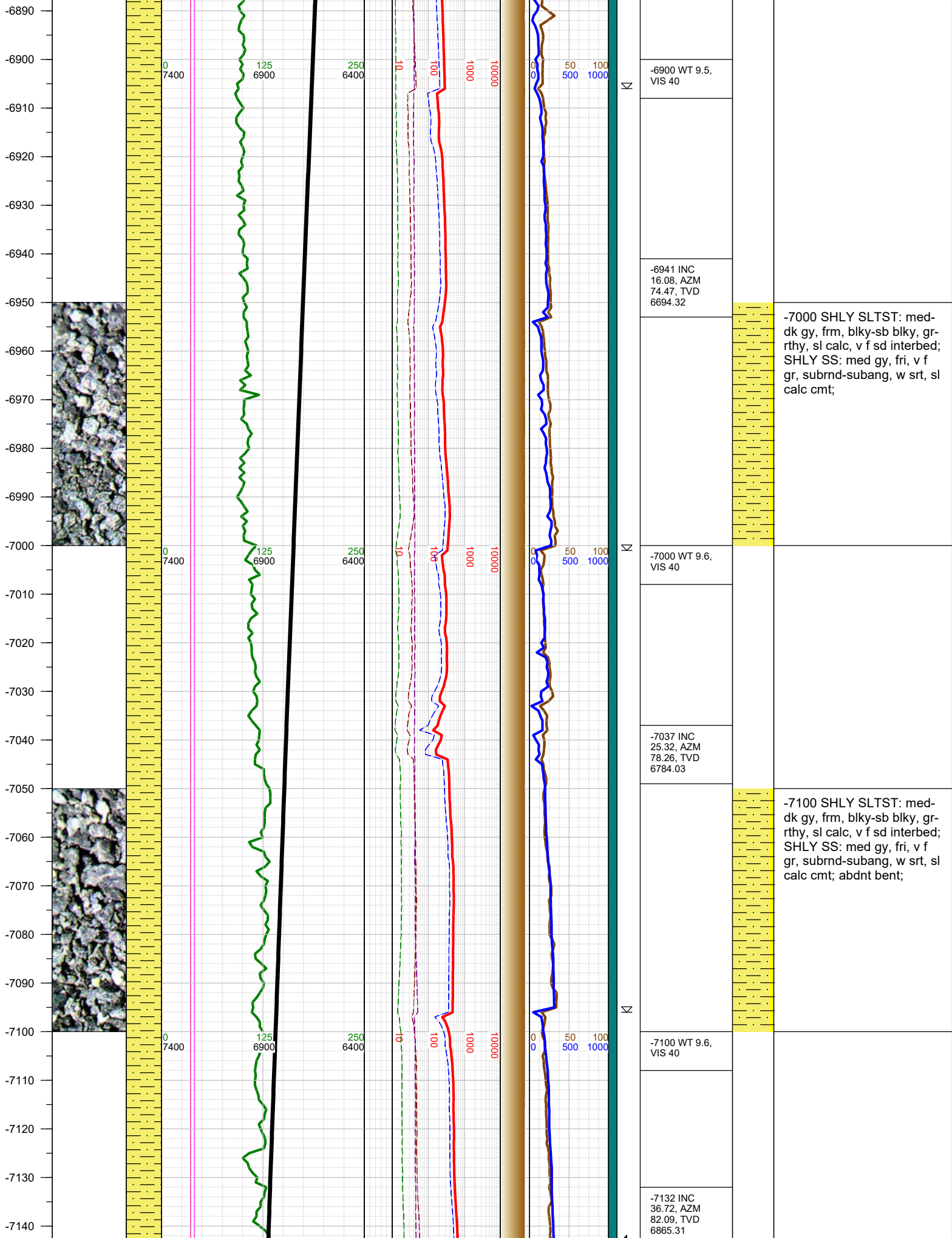
FORMATION CONNECTION MIDNIGHT NEW BIT GAS SHOW FAULT

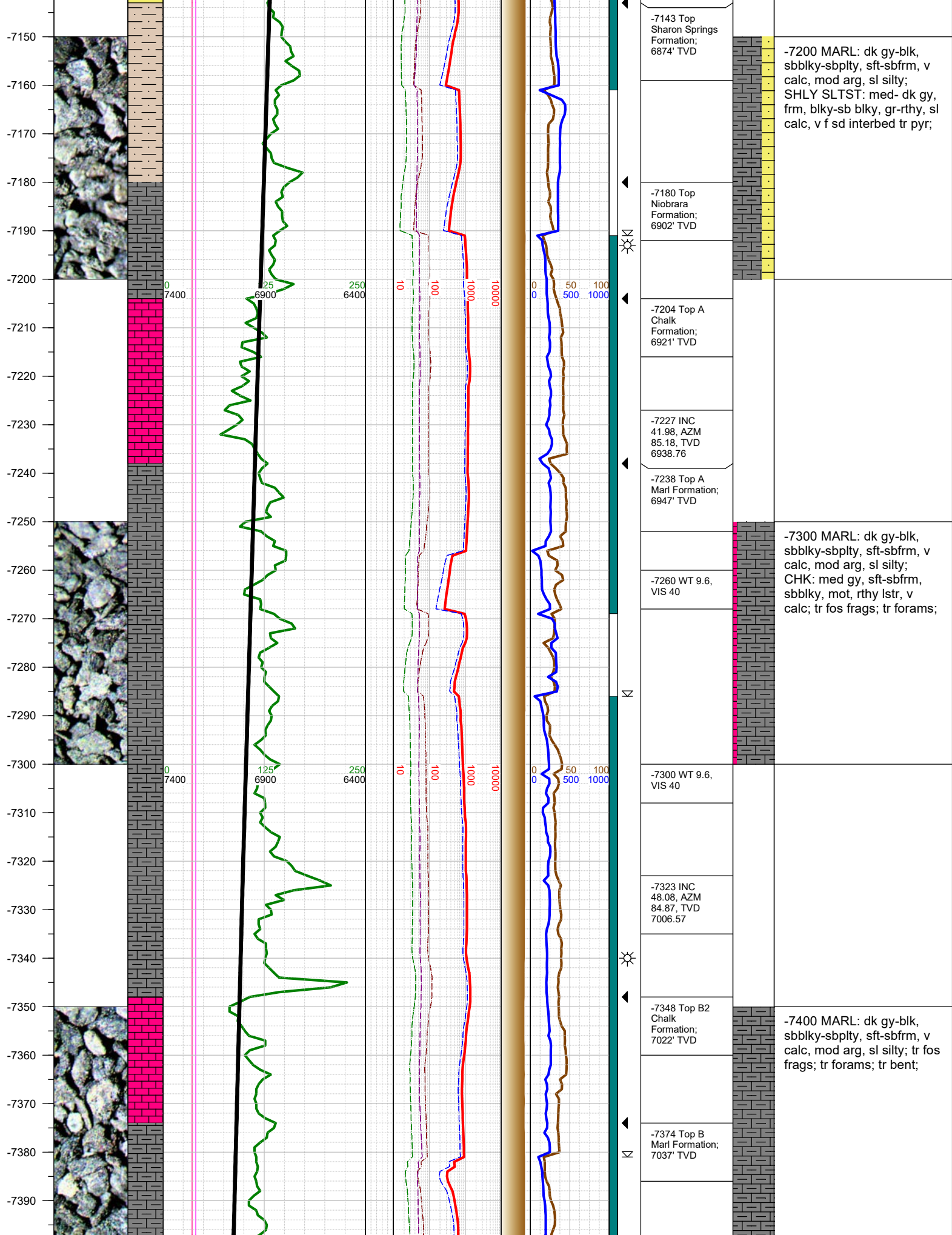


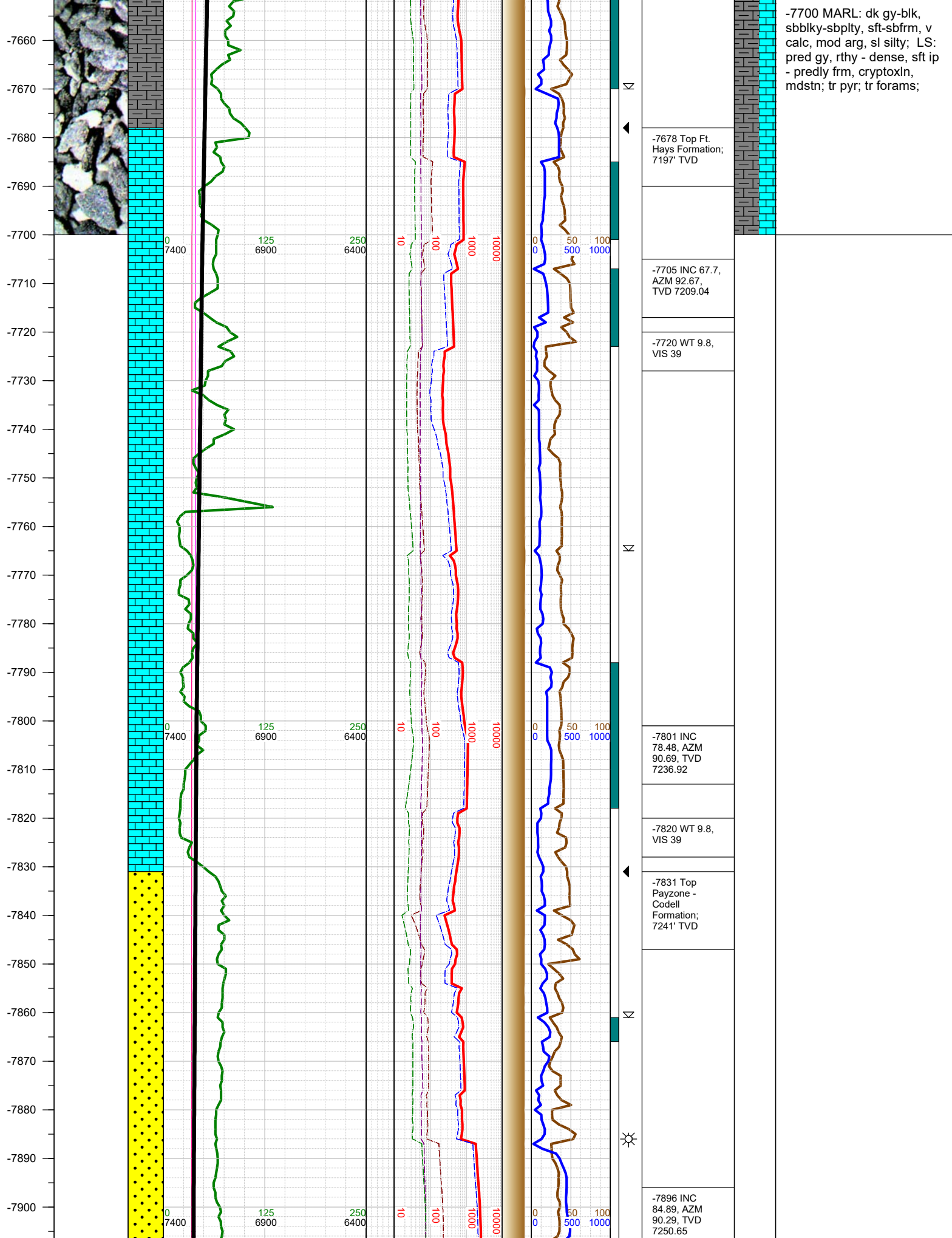




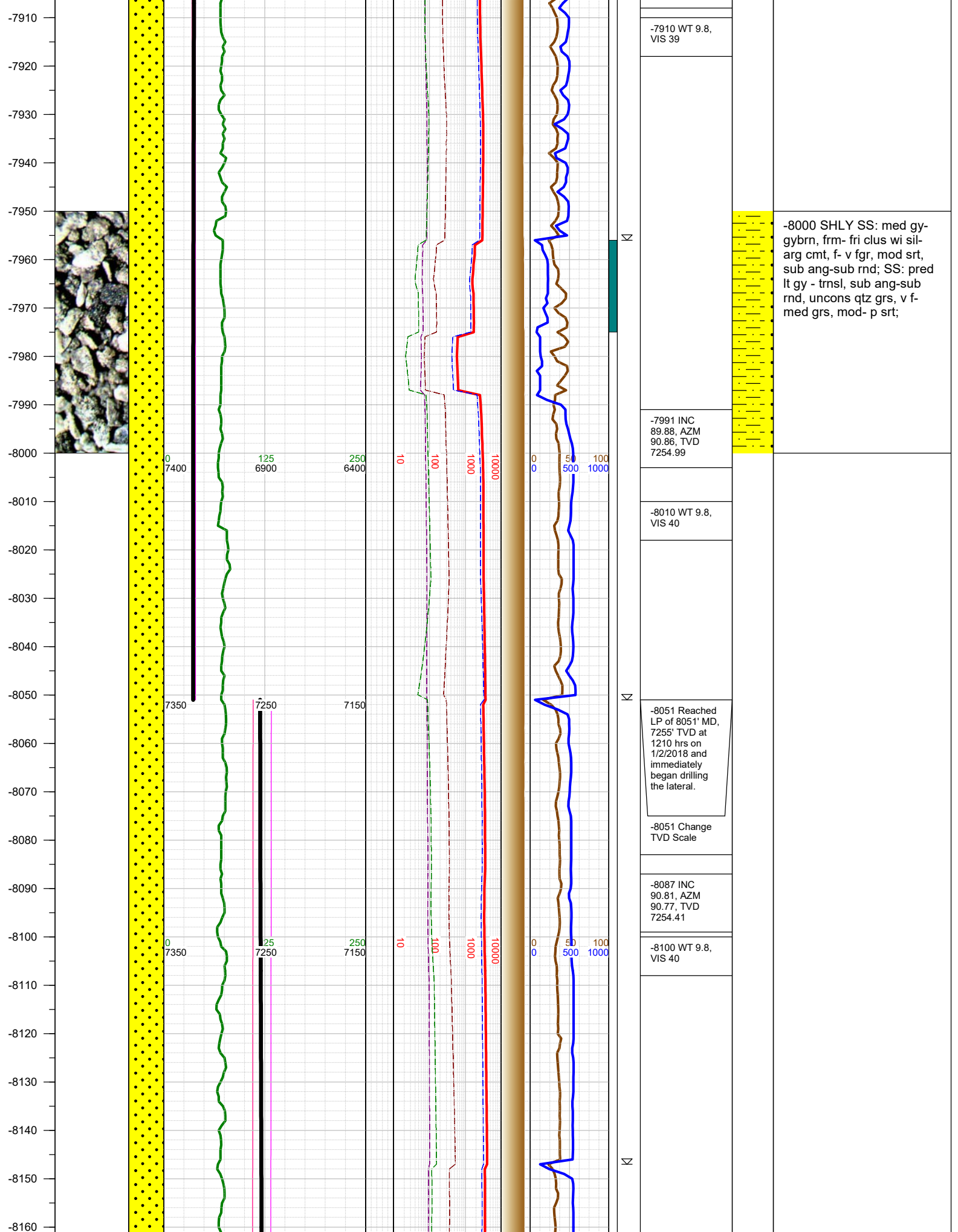


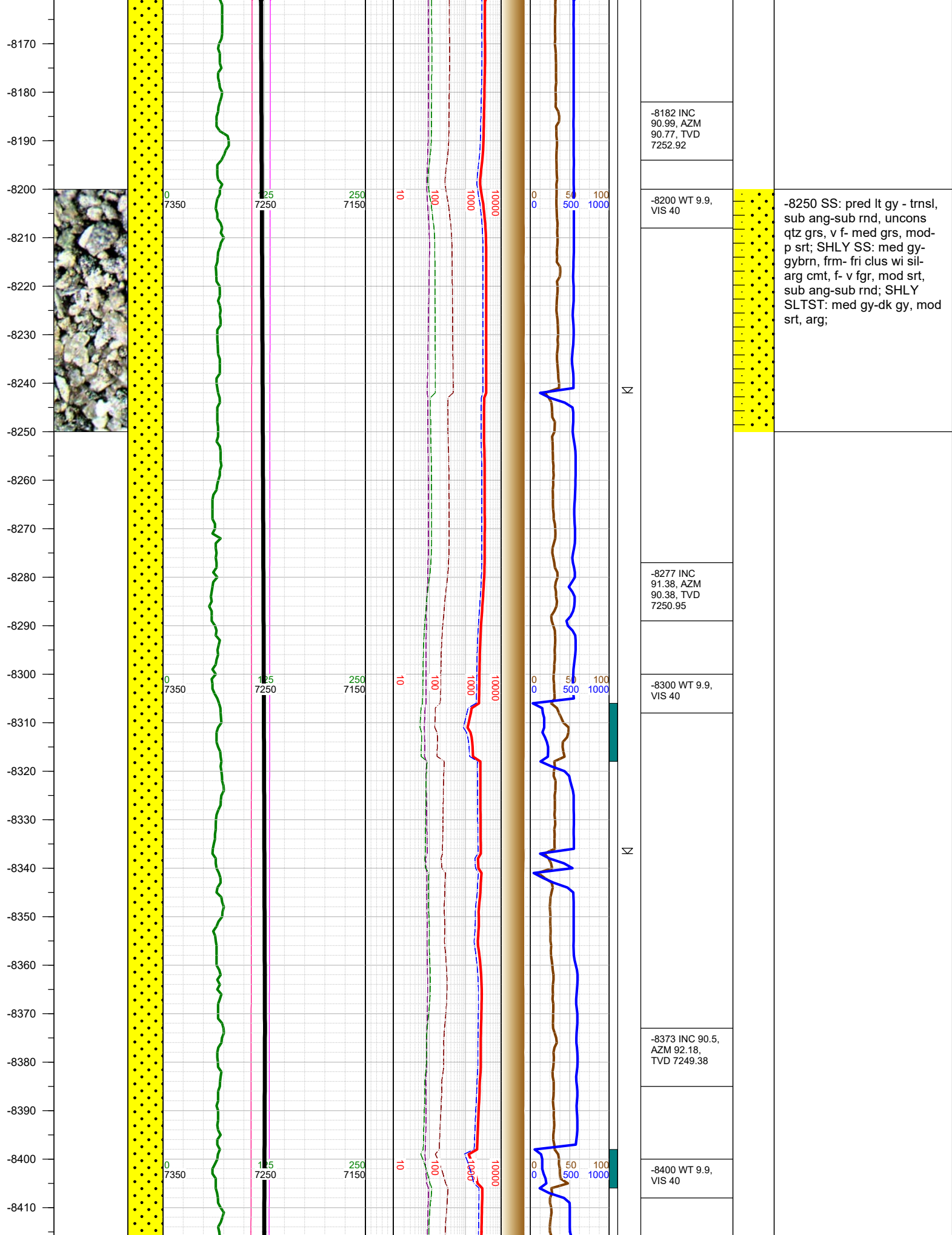


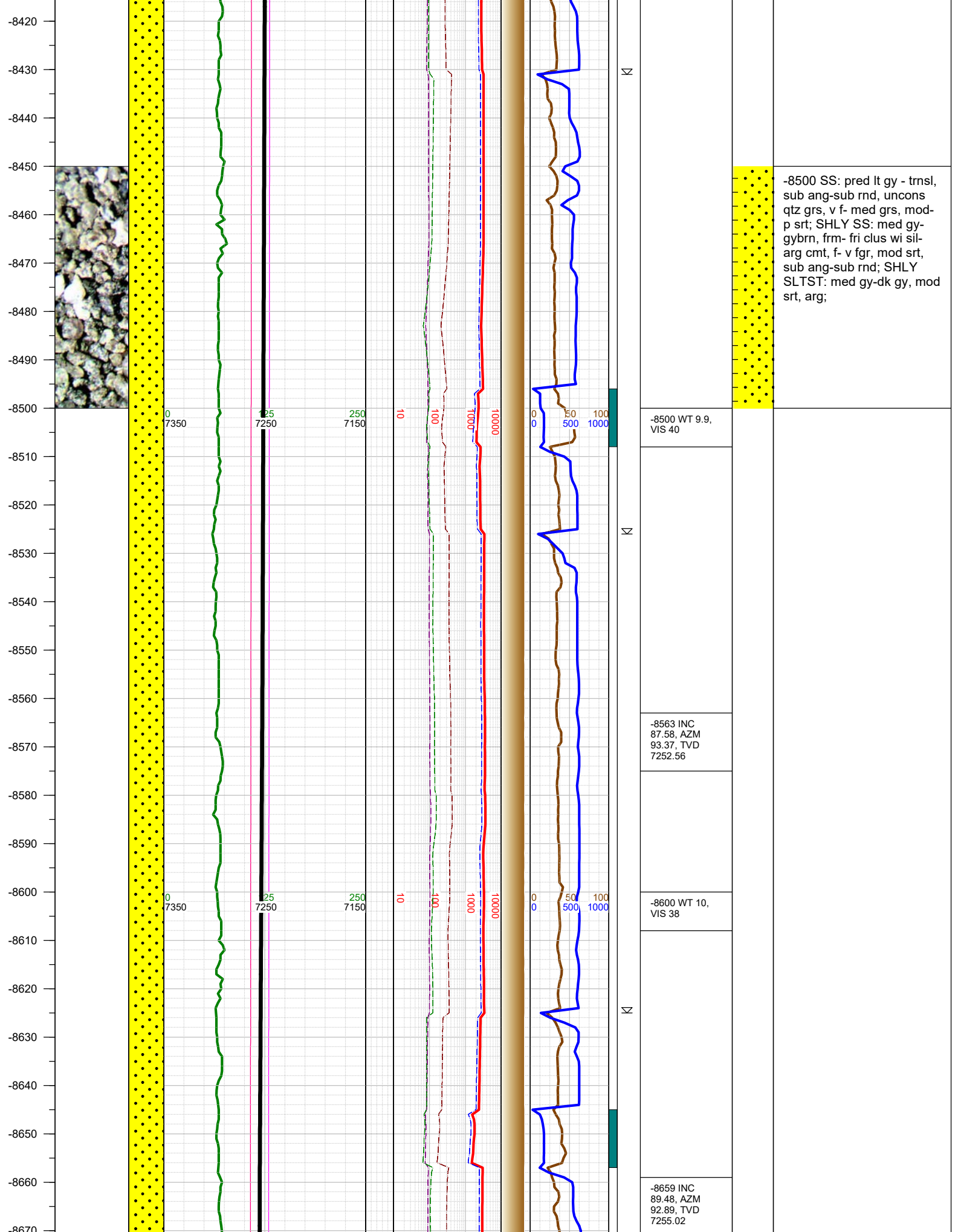


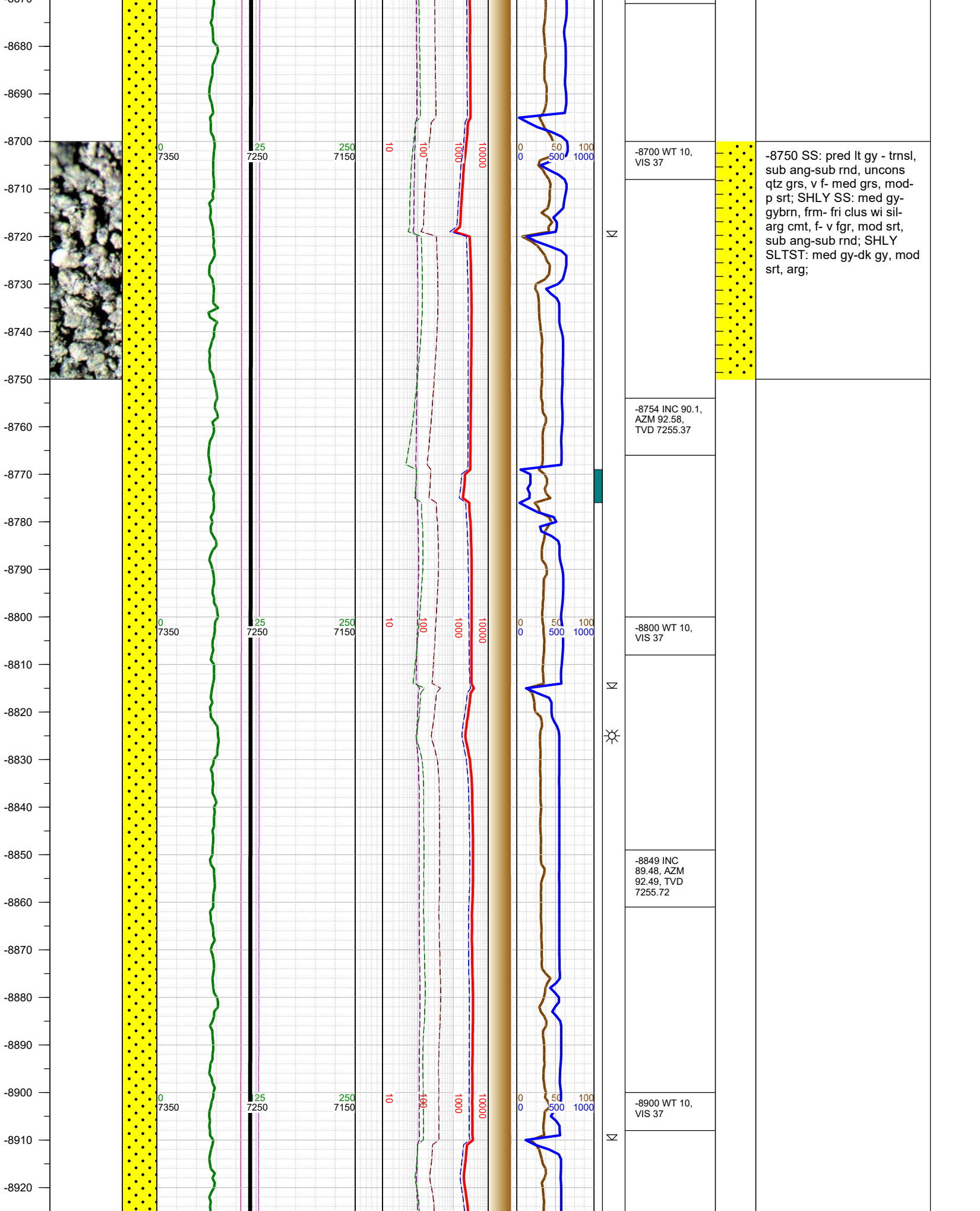


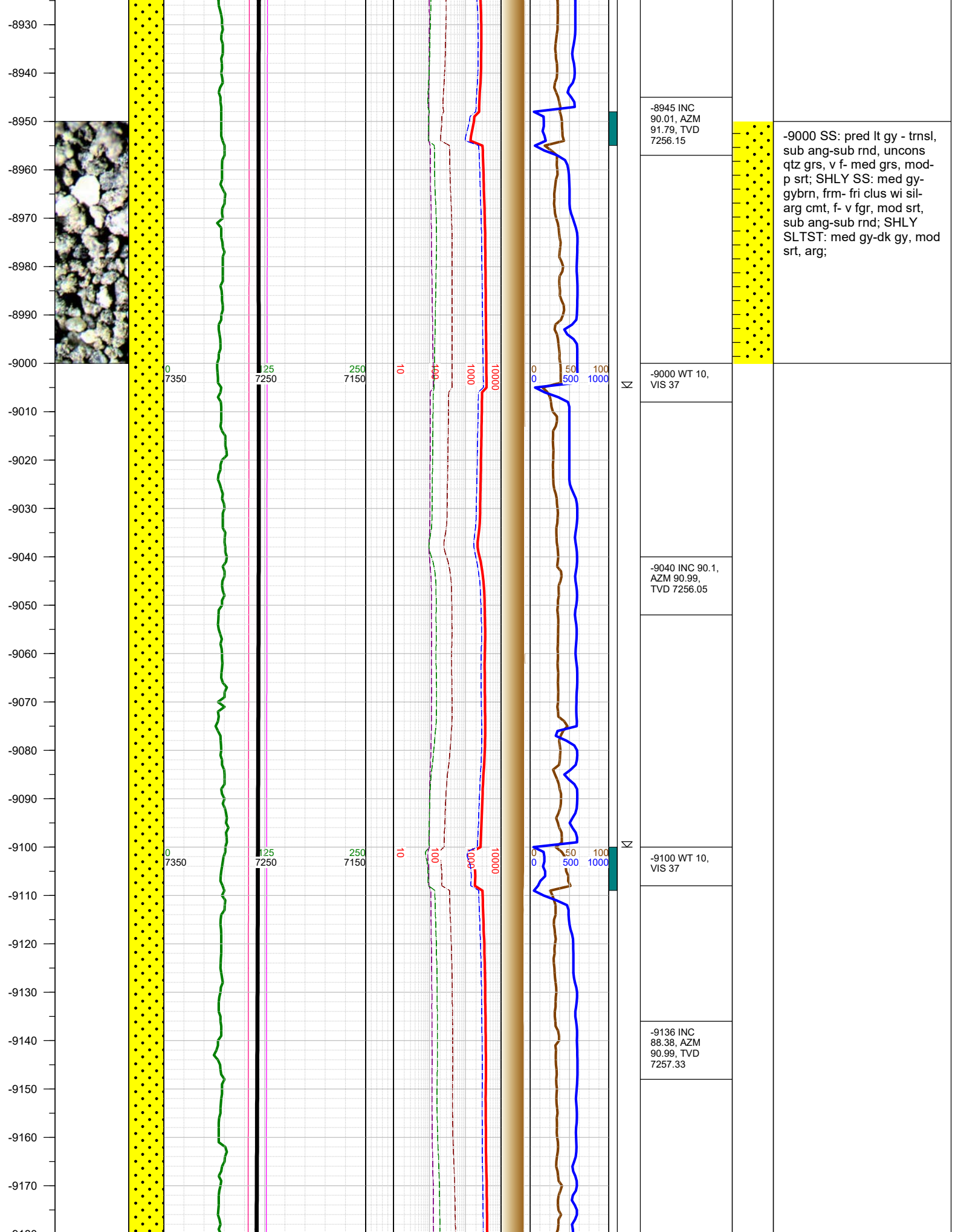
-7700 MARL: dk gy-blk, sbblky-sbplty, sft-sbfrm, v calc, mod arg, sl silty; LS: pred gy, rthy - dense, sft ip - predly frm, cryptoxln, mdstn; tr pyr; tr forams;

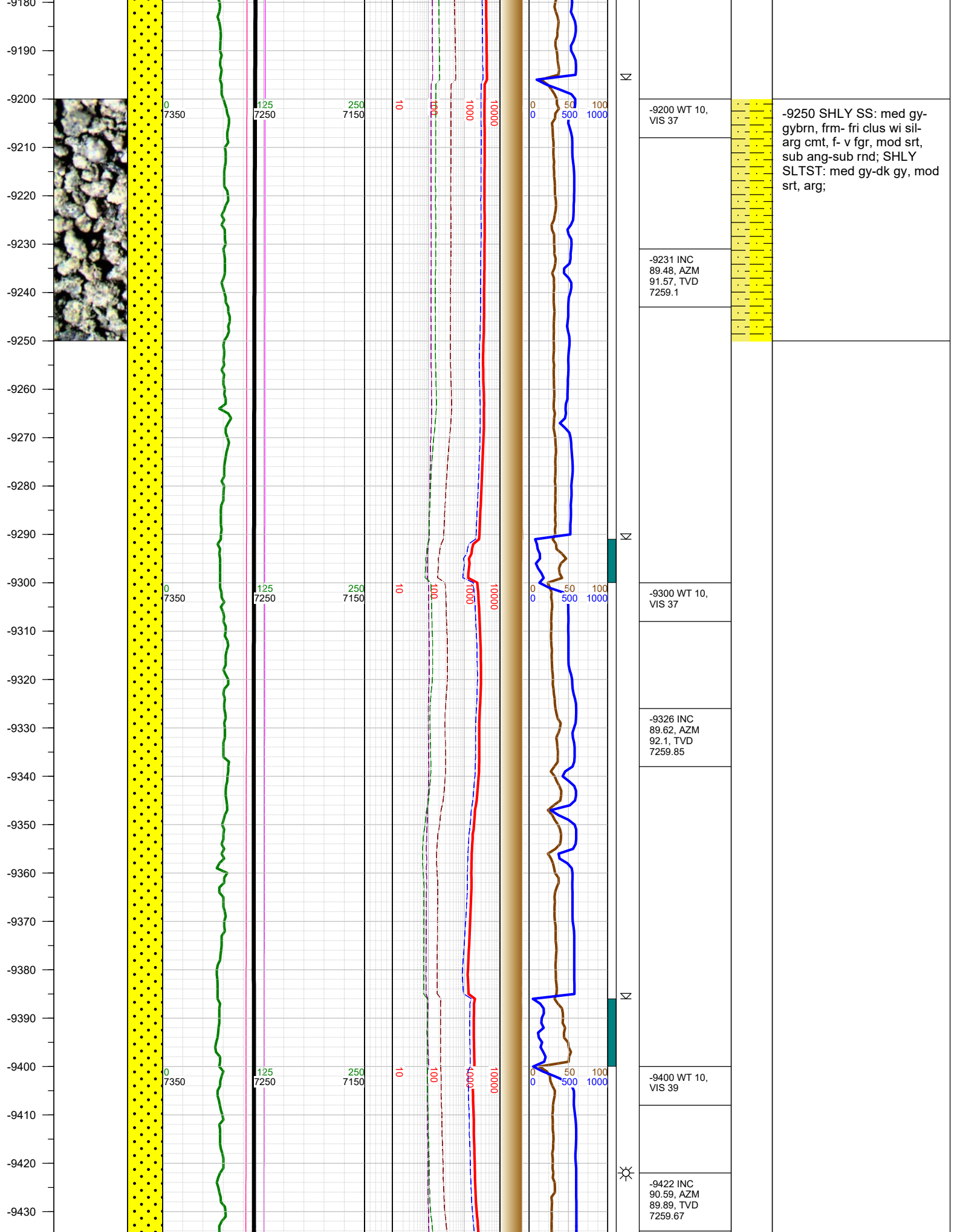


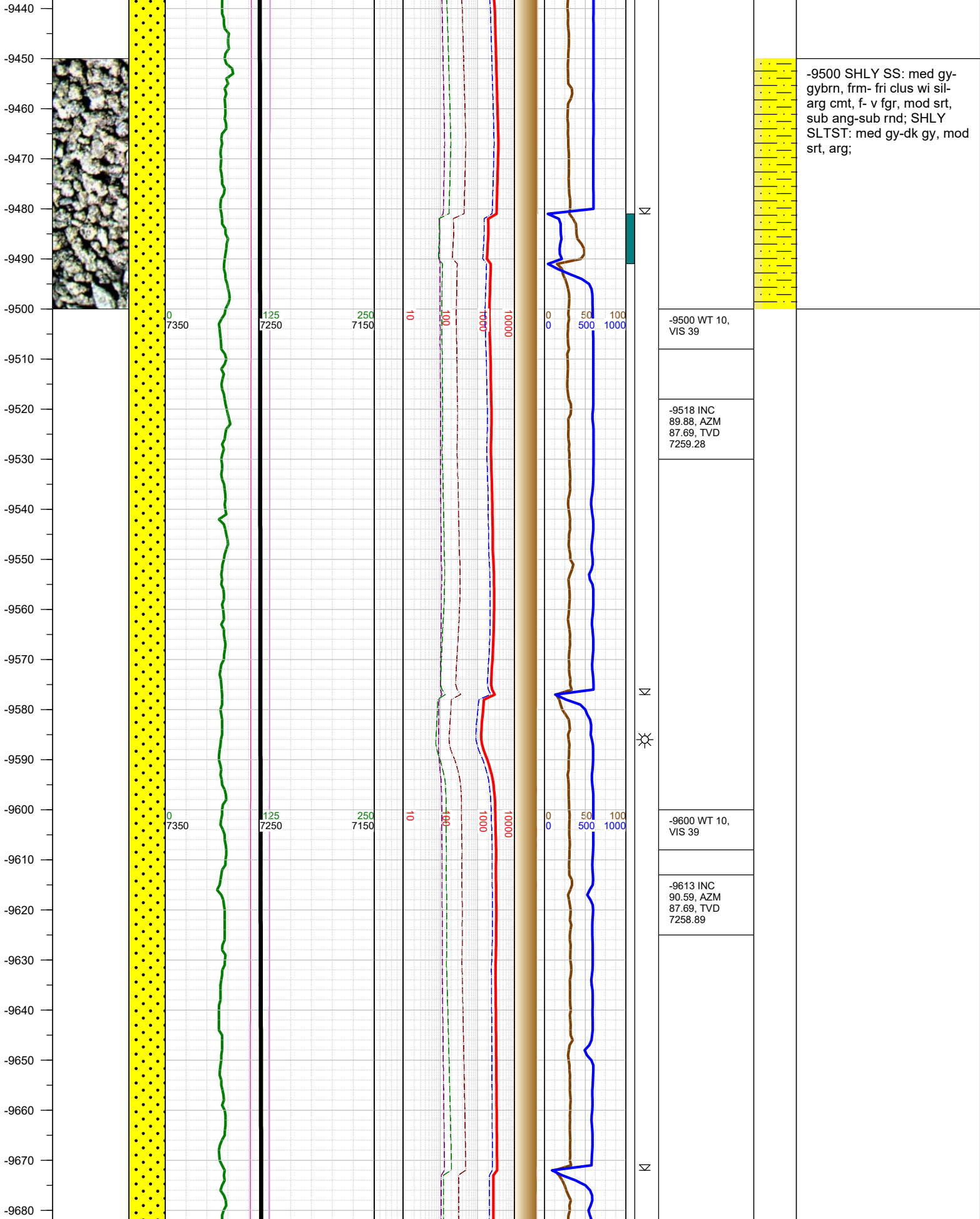




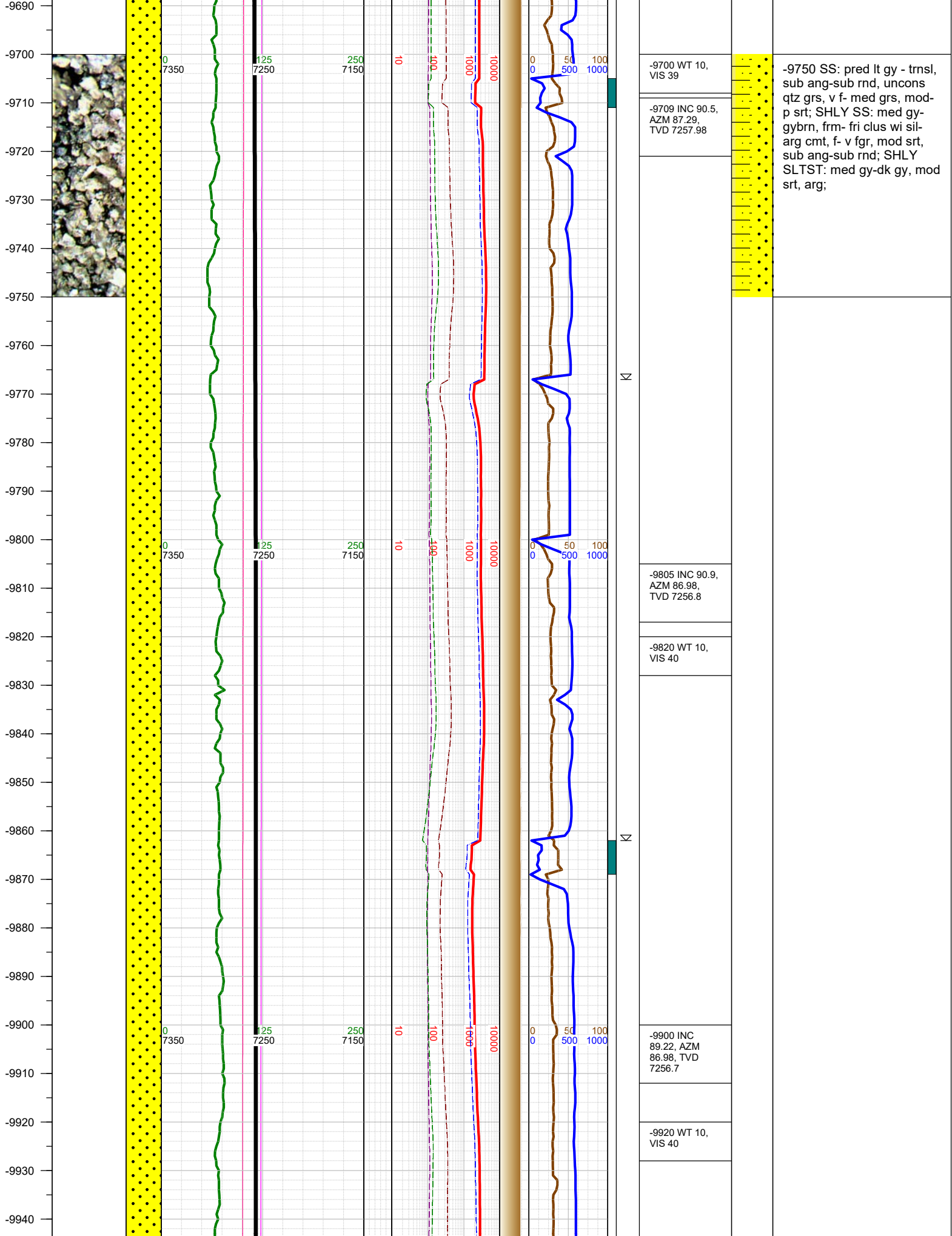


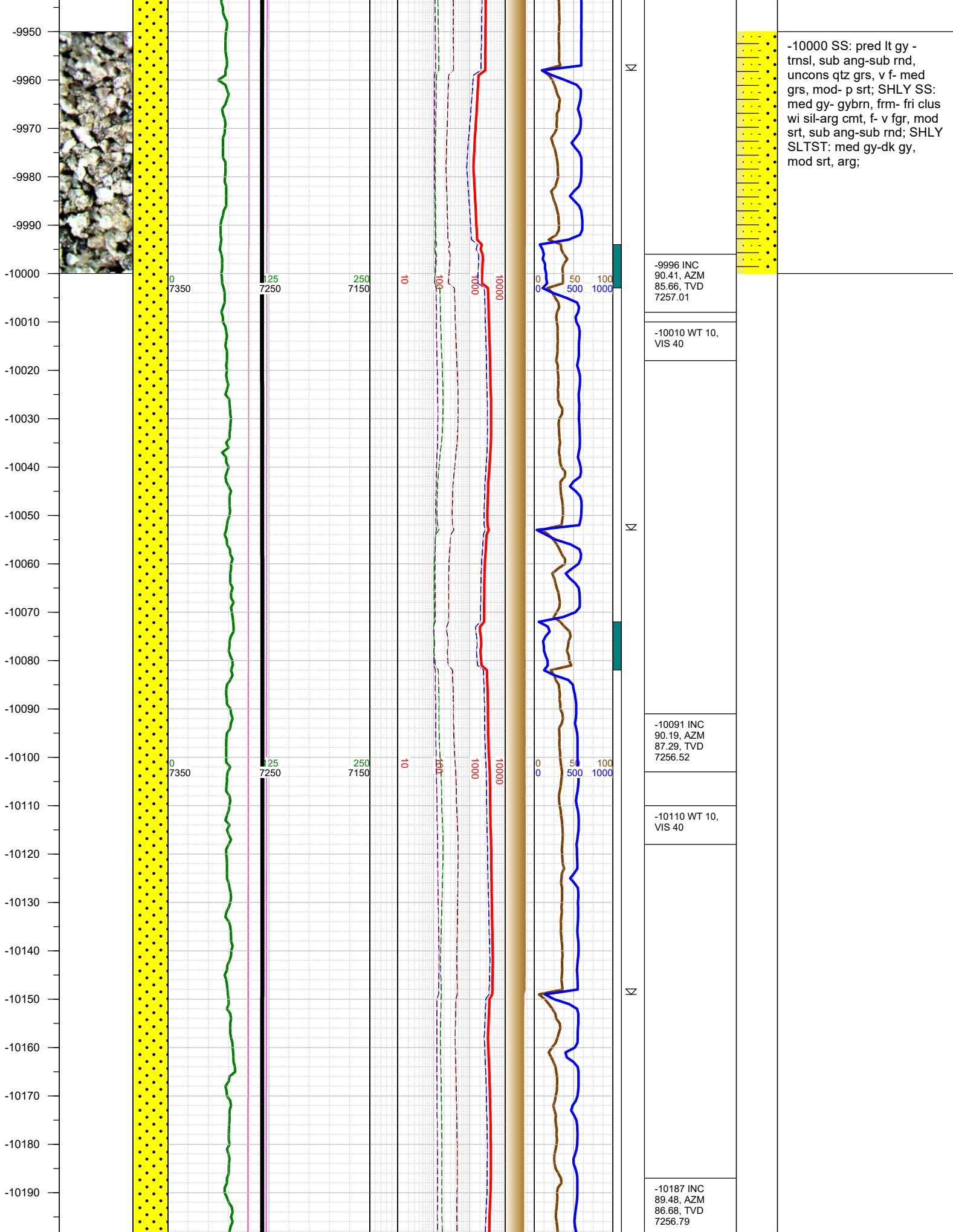






-9500 SHLY SS: med gy-gybrn, frm- fri clus wi sil-arg cmt, f- v fgr, mod srt, sub ang-sub rnd; SHLY SLTST: med gy-dk gy, mod srt, arg;





-10000 SS: pred lt gy - trns, sub ang-sub rnd, uncons qtz grs, v f- med grs, mod- p srt; SHLY SS: med gy- gybrn, frm- fri clus wi sil-arg cmt, f- v fgr, mod srt, sub ang-sub rnd; SHLY SLTST: med gy-dk gy, mod srt, arg;

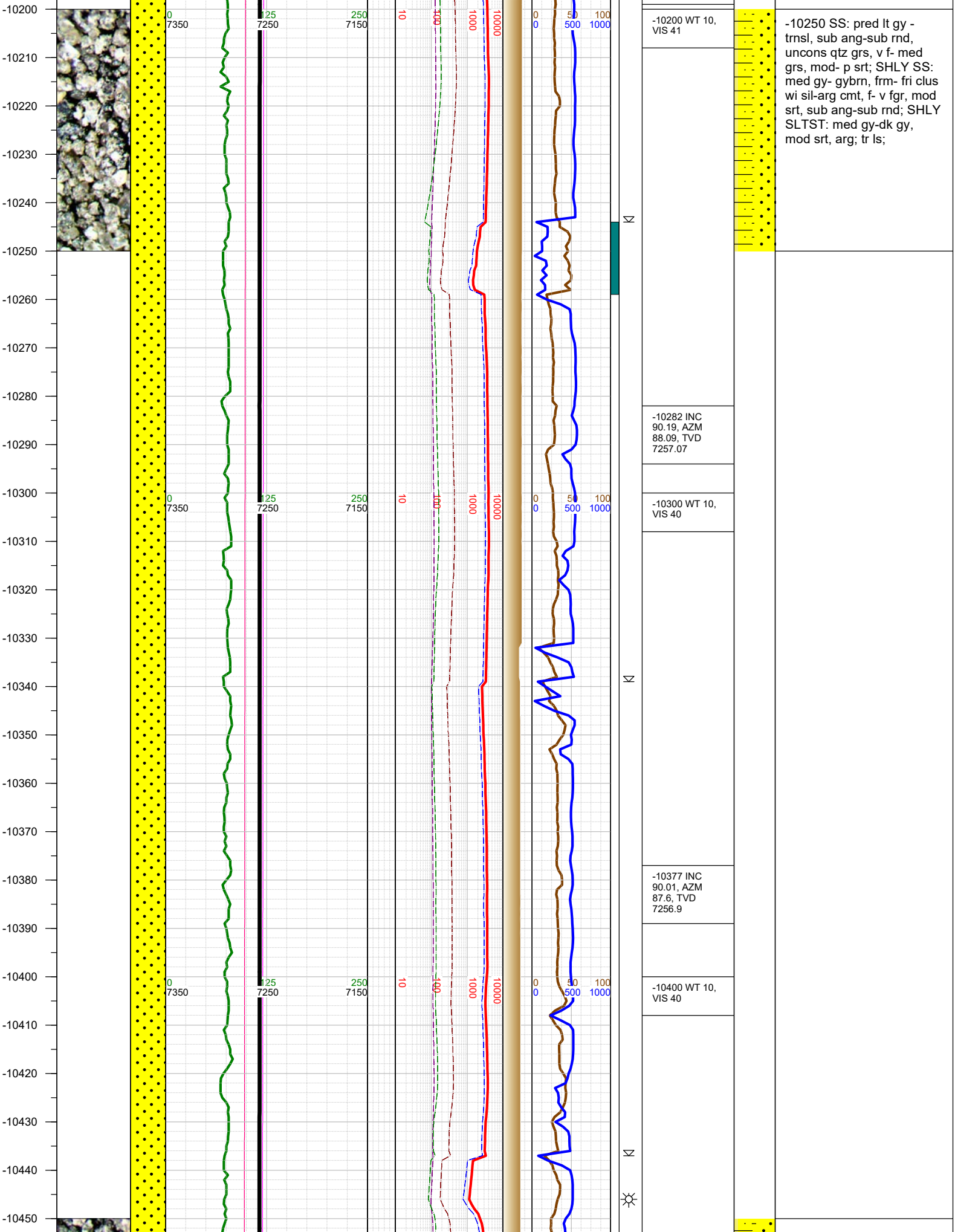
-9996 INC
90.41, AZM
85.66, TVD
7257.01

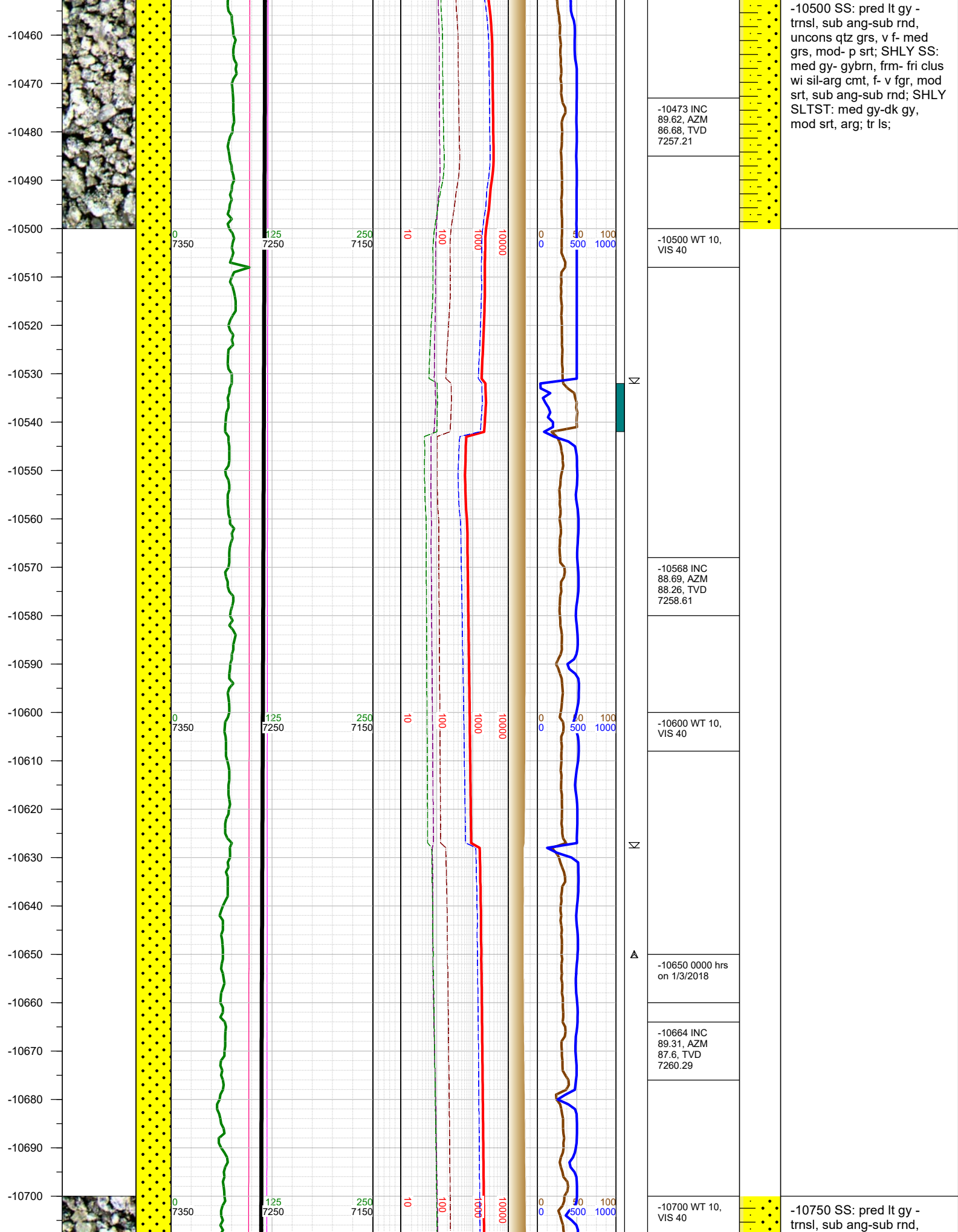
-10010 WT 10,
VIS 40

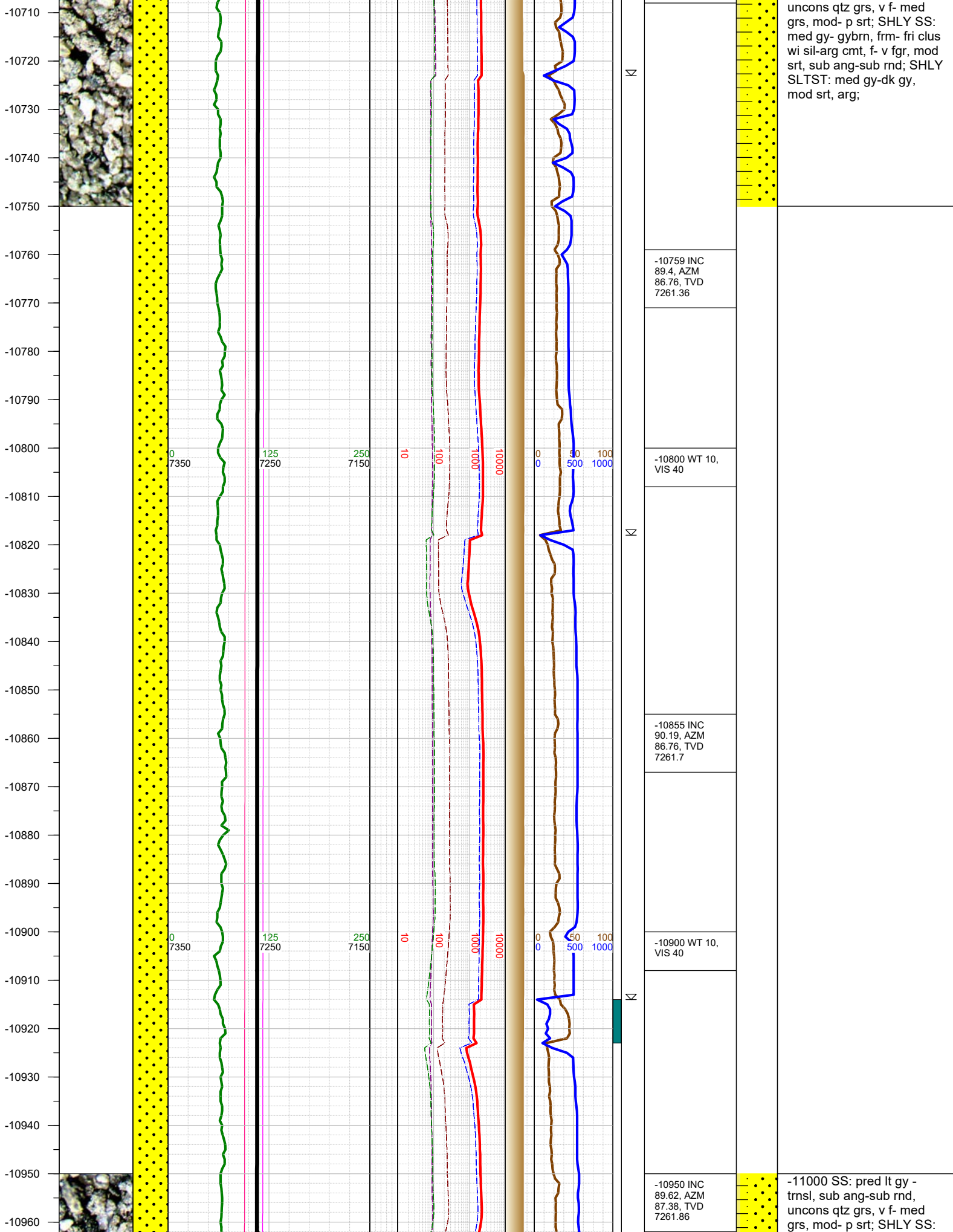
-10091 INC
90.19, AZM
87.29, TVD
7256.52

-10110 WT 10,
VIS 40

-10187 INC
89.48, AZM
86.68, TVD
7256.79







-10759 INC
89.4, AZM
86.76, TVD
7261.36

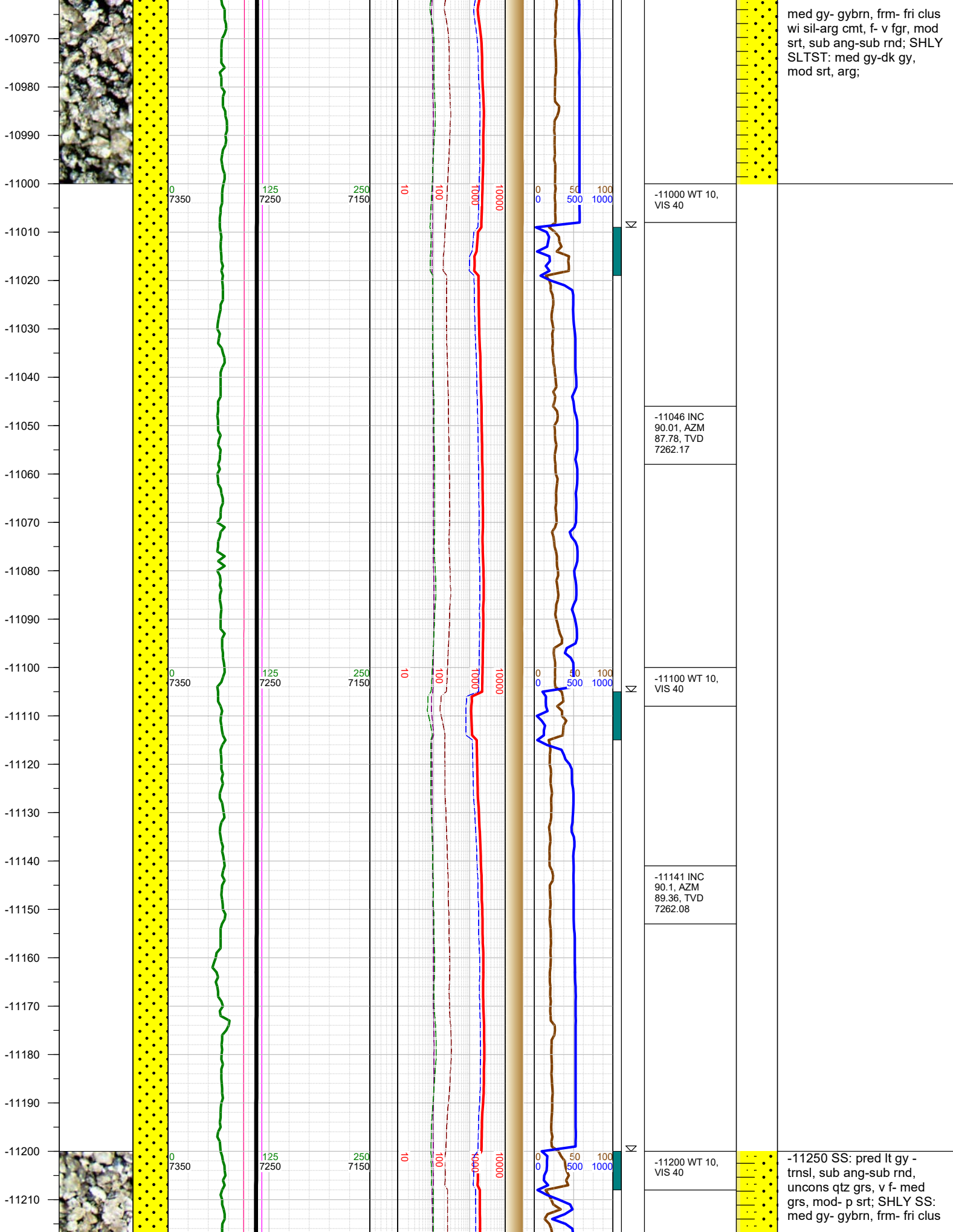
-10800 WT 10,
VIS 40

-10855 INC
90.19, AZM
86.76, TVD
7261.7

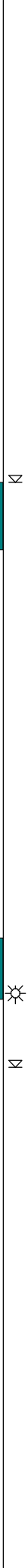
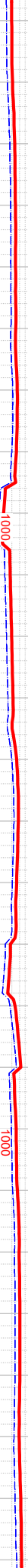
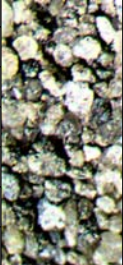
-10900 WT 10,
VIS 40

-10950 INC
89.62, AZM
87.38, TVD
7261.86

-11000 SS: pred lt gy -
trns, sub ang-sub rnd,
uncons qtz grs, v f- med
grs, mod- p srt; SHLY SS:



-11220
-11230
-11240
-11250
-11260
-11270
-11280
-11290
-11300
-11310
-11320
-11330
-11340
-11350
-11360
-11370
-11380
-11390
-11400
-11410
-11420
-11430
-11440
-11450
-11460
-11470



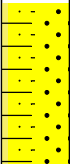
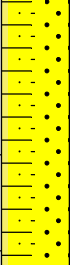
-11236 INC
88.6, AZM
89.28, TVD
7263.15

-11300 WT 10,
VIS 40

-11332 INC
88.91, AZM
90.6, TVD
7265.24

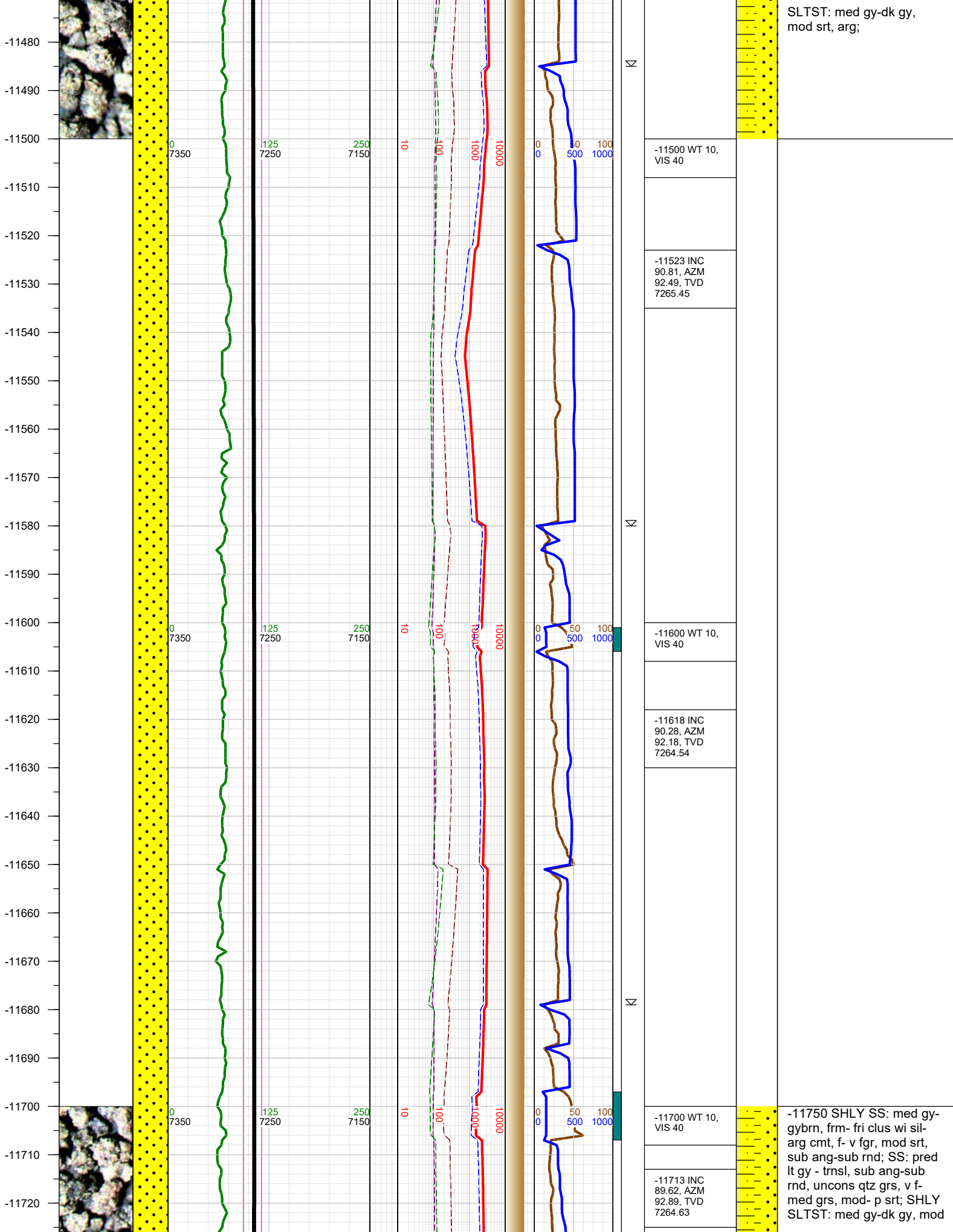
-11400 WT 10,
VIS 40

-11427 INC
90.01, AZM
92.58, TVD
7266.13



wi sil-arg cmt, f- v fgr, mod
srt, sub ang-sub rnd; SHLY
SLTST: med gy-dk gy,
mod srt, arg;

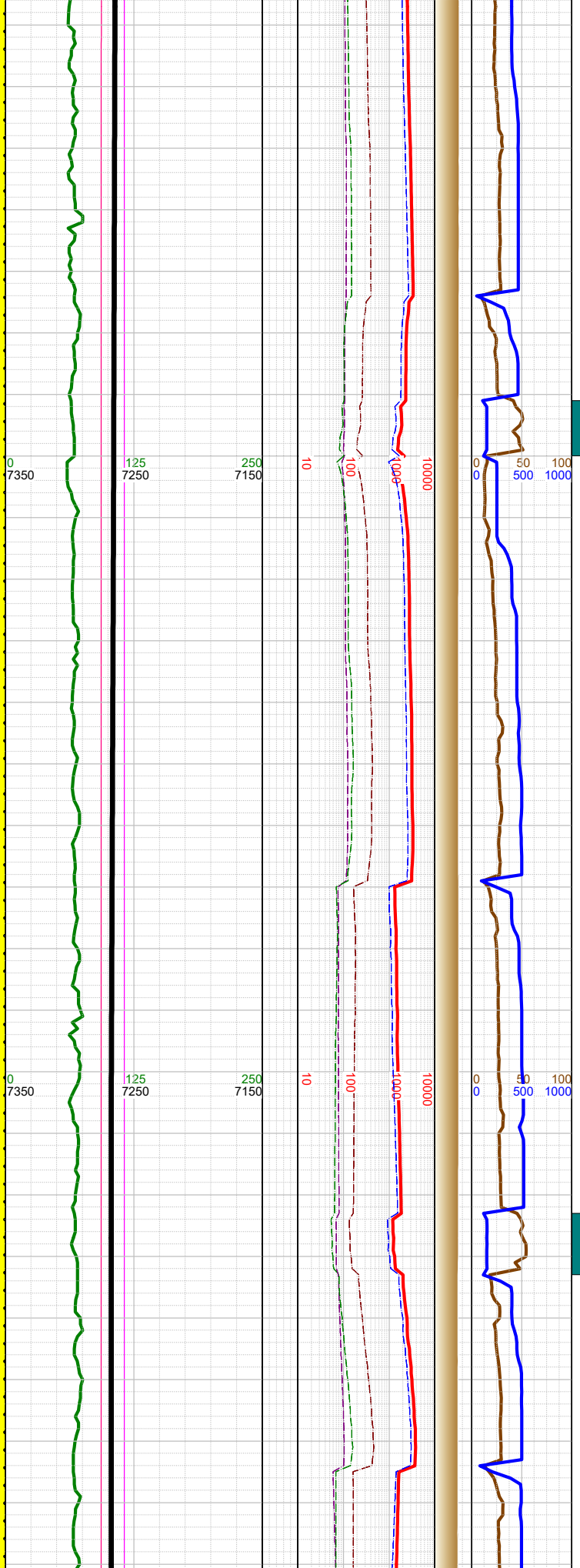
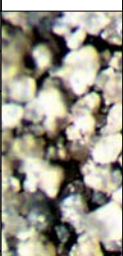
-11500 SS: pred lt gy -
trns, sub ang-sub rnd,
uncons qtz grs, v f- med
grs, mod- p srt; SHLY SS:
med gy- gybrn, frm- fri clus
wi sil-arg cmt, f- v fgr, mod
srt, sub ang-sub rnd; SHLY



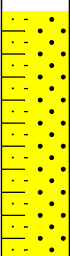
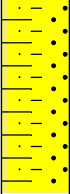
SLTST: med gy-dk gy,
mod srt, arg;

-11750 SHLY SS: med gy-
gybrn, frm- fri clus wi sil-
arg cmt, f- v fgr, mod srt,
sub ang-sub rnd; SS: pred
lt gy - trnsi, sub ang-sub
rnd, unconq grs, v f-
med grs, mod- p srt; SHLY
SLTST: med gy-dk gy, mod

-11730
-11740
-11750
-11760
-11770
-11780
-11790
-11800
-11810
-11820
-11830
-11840
-11850
-11860
-11870
-11880
-11890
-11900
-11910
-11920
-11930
-11940
-11950
-11960
-11970
-11980



-11800 WT 10, VIS 40	
-11809 INC 88.82, AZM 93.86, TVD 7265.93	
-11904 INC 89.09, AZM 93.86, TVD 7267.67	
-11920 WT 10, VIS 41	



srt, arg;

-12000 SS: pred gy - trnsl, i/p brn, sub ang-sub rnd, uncons qtz grs, v f- med grs, mod- p srt; SHLY SS: med gy- gybrn, frm- fri clus wi sil-arg cmt, f- v fgr, mod srt, sub ang-sub rnd;

