

MATTINGLY 14N-20-7N WELL LOCATION EXHIBIT

2½" ALUM. CAP
CO 17492, 2010

N89°58'20"E 2679.69'

BHL: 300' FNL
2425' FEL } SEC. 11

2½" ALUM. CAP
LS 37911, 2014

N89°58'08"E 2679.62'

2½" ALUM. CAP
CO 17492, 2012

SURFACE LOCATION:
GROUND ELEVATION=4972'
NAD83
LATITUDE:40.744371° N
LONGITUDE:104.165103° W

LANDING POINT LOCATION:
NAD83
LATITUDE:40.743037° N
LONGITUDE:104.171623° W

BOTTOM HOLE LOCATION:
NAD83
LATITUDE:40.770260° N
LONGITUDE:104.171956° W

N00°33'39"W 5276.91'

14

NOTES:
BH LOCATION PROVIDED BY CLIENT.
LAND SURFACE USE- RANGELAND
SEE LOCATION DRAWING FOR ADDITIONAL
IMPROVEMENTS WITHIN 500'

PDOP=1.6
GPS OPERATOR: DOMINICK DAVIS

N00°33'12"W 9921.16'

MATTINGLY 14N-20-7N

S74°55'02"W 1871.43'
LP: 300' FSL
2460' FEL

772'

647'

2½" ALUM. CAP
LS 37911, 2014

S00°48'20"E 2618.20'

2½" ALUM. CAP
CO 17492, 2012

S89°32'13"W 2690.86'

S89°32'03"W 2690.72'

2½" ALUM. CAP
CO 17492, 2010

2½" ALUM. CAP
PLS 28285, 2012

LEGEND

- ⊕ = EXISTING MONUMENT
- = CALCULATED POSITION
- = PROPOSED WELL
- ◆ = EXISTING WELL
- ⬤ = BOTTOM HOLE
- ▲ = LANDING POINT
- LP = LANDING POINT
- BHL = BOTTOM HOLE LOCATION

NOTES:

- THIS FIELD SURVEY CONFORMS TO THE MINIMUM STANDARDS SET BY THE C.O.G.C.C., RULE NO. 215
- ALL DISTANCES AND BEARINGS SHOWN HEREON ARE GROUND VALUES AS GPS MEASURED IN THE FIELD, WITH TIES TO WELLS MEASURED PERPENDICULAR TO LINES SHOWN HEREON. THIS LOW DISTORTION PROJECTION (LDP) IS BASED ON THE NORTH AMERICAN DATUM OF 1983, U.S. SURVEY FOOT WITH A LATITUDE ORIGIN OF 40.741922°N, A CENTRAL MERIDIAN LONGITUDE OF 104.201428°W, AND A SCALE FACTOR ON THE CENTRAL MERIDIAN OF 1.000235 (EXACT). THE LDP BASIS OF BEARINGS IS GEODETIC NORTH.
- FIELD VERIFICATION OF MONUMENTS COMPLETED WITHIN 1 YEAR OF SIGNATURE DATE, UNLESS OTHERWISE NOTED.

WELL MATTINGLY 14N-20-7N TO BE LOCATED 772' FSL & 647' FEL

I, BRIAN C. RITZ, A LICENSED PROFESSIONAL LAND SURVEYOR IN THE STATE OF COLORADO, DO HEREBY STATE TO 8 NORTH LLC THAT THE WELL LOCATION EXHIBIT SHOWN HEREON WAS PREPARED BY ME OR UNDER MY DIRECT SUPERVISION AND THE DRAWING SHOWN HEREON ACCURATELY DEPICTS THE PROPOSED LOCATION OF THE WELL. THIS EXHIBIT MEETS THE REQUIREMENTS OF A GIS LAND POSITION AS DEFINED BY SECTION 38-51-102 (7.5) C.R.S. AND AS SUCH PER SECTION 38-51-109.3 C.R.S. CANNOT BE RELIED UPON TO DETERMINE OWNERSHIP.

BRIAN C. RITZ, PLS 38452
COLORADO LICENSED PROFESSIONAL LAND SURVEYOR
FOR AND ON BEHALF OF P.F.S., LLC
d.b.a. ASCENT GEOMATICS SOLUTIONS



SHEET 1 OF 2

NOTICE: ACCORDING TO COLORADO LAW YOU MUST COMMENCE ANY LEGAL ACTION BASED UPON ANY DEFECT IN THIS SURVEY WITHIN THREE YEARS AFTER YOU FIRST DISCOVER SUCH DEFECT. IN NO EVENT MAY ANY ACTION BASED UPON ANY DEFECT IN THIS SURVEY BE COMMENCED MORE THAN TEN YEARS FROM THIS SAID DATE OF THIS CERTIFICATION SHOWN HEREON.



7535 Hilltop Circle
Denver, CO 80221
(303) 928-7128
www.ascentgeomatics.com

FIELD DATE:
02-23-18

DRAWING DATE:
02-23-18

BY:
RMC

CHECKED:
WDW

WELL NAME:
MATTINGLY 14N-20-7N

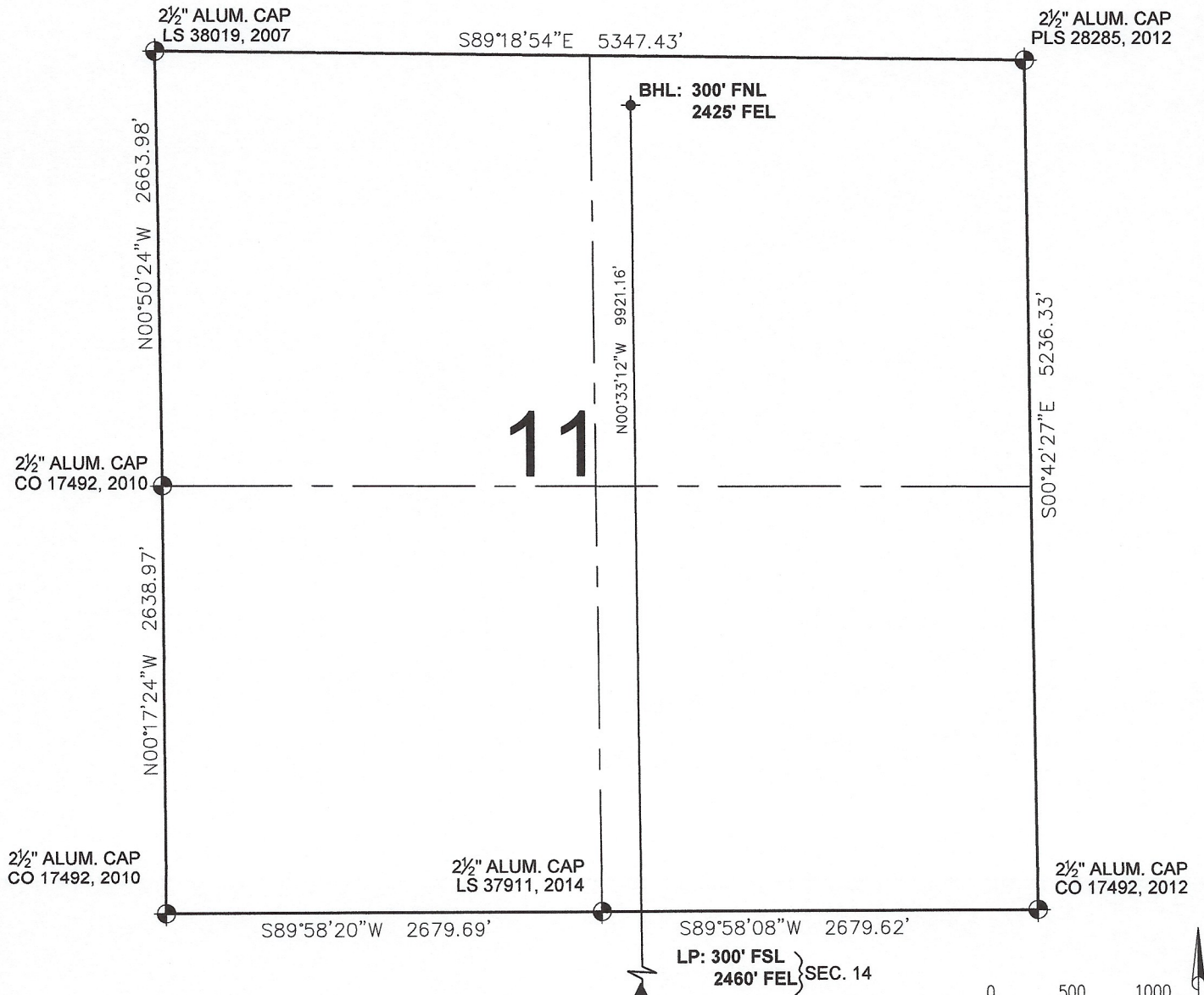
SURFACE LOCATION:

SE 1/4 SE 1/4 SEC. 14, T9N, R61W, 6TH P.M.
WELD COUNTY, COLORADO

PREPARED FOR:



MATTINGLY 14N-20-7N WELL LOCATION EXHIBIT



0 500 1000
SCALE: 1" = 1000'



LEGEND

- ⊕ = EXISTING MONUMENT
- = CALCULATED POSITION
- = PROPOSED WELL
- ◆ = EXISTING WELL
- ⬮ = BOTTOM HOLE
- ▲ = LANDING POINT
- LP = LANDING POINT
- BHL = BOTTOM HOLE LOCATION

BRIAN C. RITZ, PLS 38452
COLORADO LICENSED PROFESSIONAL LAND SURVEYOR
FOR AND ON BEHALF OF P.F.S., LLC
d.b.a. ASCENT GEOMATICS SOLUTIONS



SHEET 2 OF 2



FIELD DATE:
02-23-18
DRAWING DATE:
02-23-18
BY:
RMC
CHECKED:
WDW

WELL NAME:
MATTINGLY 14N-20-7N
SURFACE LOCATION:
SE 1/4 SE 1/4 SEC. 14, T9N, R61W, 6TH P.M.
WELD COUNTY, COLORADO

PREPARED FOR:

