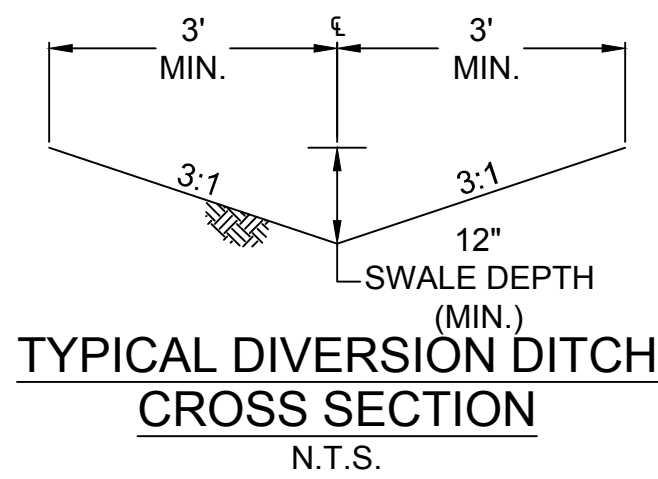
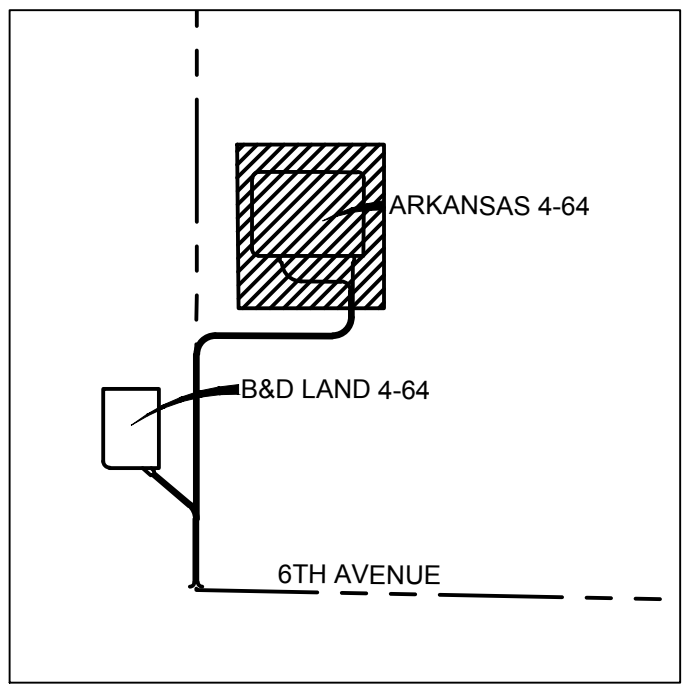


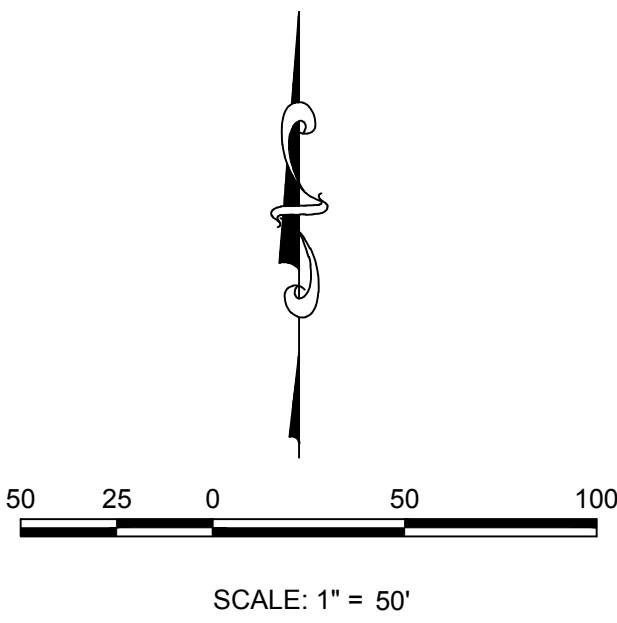
PLAN: PHASE 1 INTERIM RECLAMATION



TYPICAL DIVERSION DITCH
CROSS SECTION
N.T.S.



KEYMAP



DETAIL SHEET		BMP LEGEND	
NO.	NO.		
1	①		CD CHECK DAM
2	①		CB COMPOST BLANKET
3	①		CFB COMPOST FILTER BERM
4	①		CWA CONCRETE WASHOUT AREA
5	①		CF CONSTRUCTION FENCE
6	①		CM CONSTRUCTION MARKERS
7	①		CS CURB SOCK-INLET PROTECTION
8	①		DW DEWATERING
9	①		DD DIVERSION DITCH
10	②		ECB EROSION CONTROL BLANKET
11	②		FGM FLEXIBLE GROWTH MEDIUM
12	②		IP INLET PROTECTION
13	②		RCD REINFORCED CHECK DAM
14	②		RRB REINFORCED ROCK BERM
15	②		RRC RRB FOR CULVERT PROTECTION
16	②		SB SEDIMENT BASIN
17	③		SCL SEDIMENT CONTROL LOG
18	③		ST SEDIMENT TRAP
19	③		SM SEEDING AND MULCHING
20	③		SF SILT FENCE
21	③		SSA STABILIZED STAGING AREA
22	③		SR SURFACE ROUGHENING
23	③		TSD TEMPORARY SLOPE DRAIN
24	③		TSC TEMPORARY STREAM CROSSING
25	③		TER TERRACING
26	③		VTC VEHICLE TRACKING CONTROL
27	③		WW VTC WITH WHEEL WASH
	①		ROCK AND RIPRAP GRADATIONS
			LOC LIMITS OF CONSTRUCTION

AREA OUTSIDE OF LIMITS OF CONSTRUCTION, LOC

- NOTES:
- SEE THE STANDARD NOTES AND DETAILS IN FIELD WIDE REPORT, REVISED JANUARY 2010 (3 SHEETS) FOR ALL STANDARD DETAILS & CITY OF AURORA RULES AND REGULATIONS REGARDING STORMWATER DISCHARGES ASSOCIATED WITH CONSTRUCTION ACTIVITIES, NOTES AND LEGENDS OF BMP NAMES AND SYMBOLS.
 - QUANTITIES:
 - PAD SITE ELEVATION = 5609.9' (GROUND), 5610.4' (GRAVEL)
 - CUT SLOPES = 3:1
 - FILL SLOPES = 3:1
 - RECLAMATION TOTAL CUT = 1860 CY
 - RECLAMATION TOTAL FILL = 2385 CY
 - RECLAMATION TOPSOIL = 525 CY PLACED USED FOR RECLAMATION
 - RECLAIMED GRAVEL SURFACE = 1.54 ACRES
 - RECLAMATION TOTAL DISTURBED AREA = 2.05 ACRES
 - ALL DIVERSION DITCHES ARE ANTICIPATED TO BE UNLINED.
 - THE DIMENSION OF THE CORKER BLOCK AND THE SEDIMENT BASIN DRED

SOILS:

USING THE US DEPARTMENT OF AGRICULTURE'S WEB SOIL SURVEY, 2 SOIL TYPES EXIST WITHIN THE PROJECT BOUNDARY. BRESSER-TRUCKTON SANDY LOAMS 3 TO 5 PERCENT SLOPES (BvC) AND NUNN-BRESSER-ASCALON COMPLEX, 0 TO 3 PERCENT SLOPES(NrB). ALL OF THE SOILS LISTED ABOVE FALL INTO THE HYDROLOGIC CLASSIFICATION GROUP B, WHICH HAS MODERATE INFILTRATION. THE K FACTOR DESCRIBES A SOIL'S SUSCEPTIBILITY FOR RILL AND SHEET EROSION POTENTIAL (RATED 0.02 TO 0.69); THE HIGHER THE VALUE THE MORE SUSCEPTIBLE THE SOIL IS TO EROSION. THIS PROJECTS AREA'S SOIL HAS AN AVERAGE K OF 0.21.

SEDIMENT TRAP/BASIN:

SEDIMENT BASIN: TRIBUTARY AREA IS 4.58 ACRES, WHICH IS LESS THAN 5 ACRES, THEREFORE USE 38.5'W X 77'L X 4'D, CL = 8", HD = 21/32".

DIVERSION DITCH CAPACITY: 2.39 CFS @ 0.25%
OFFSITE DIVERSION DITCH CAPACITY: 2.39 CFS @ 0.25%

BENCH MARK
BENCHMARK 374 LOCATED ON THE SECTION LINE
BETWEEN SECTIONS 12 AND 13, T5S, R64W, 6TH
P.M., TAKEN FROM 1988 PUBLISHED DATUM BY THE
UNITED STATES DEPARTMENT OF THE INTERIOR,
GEOLOGICAL SURVEY AS BEING 6054.61 FEET.

CALL 811
TWO WORKING DAYS
BEFORE YOU DIG
UNCC 1-800-922-1987
UTILITY NOTIFICATION
CENTER OF COLORADO

10333 E. Dry Creek Rd.
Suite 240
Englewood, CO 80112
Tel: (720) 482-9546
Fax: (720) 482-9546



CONOCOPHILLIPS COMPANY
ATTN: KATHY DENZER
34501 E. QUINCY AVE.
WATKINS, CO 80137
PHONE: (303) 268-3773

ARKANSAS 4-64 3-2
GESC PLANS
PHASE 1 INTERIM RECLAMATION AREA

DRAWN BY: KJD
CHECKED BY: MEL
DATE: OCT 2017
SCALE: AS SHOWN
FILE NO: 8.13.302805

SHEET NUMBER
6