

HALLIBURTON

iCem[®] Service

Terra Energy Partners

For: Terra

Date: Wednesday, January 3, 2018, 2017

SR 313-12 Surface PJR

API #: 05-045-23448

Sincerely,

Grand Junction Cement Engineering

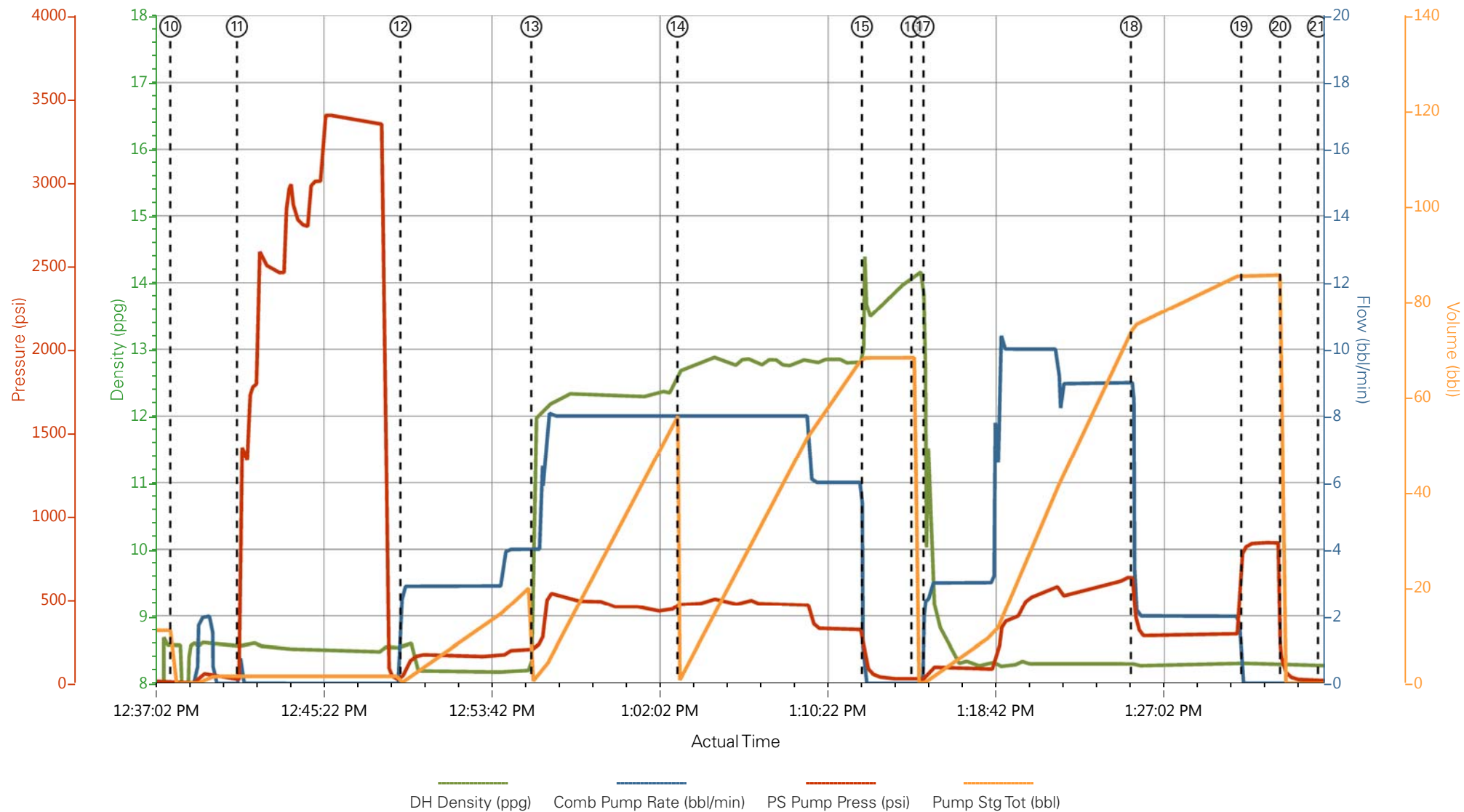
1.0 Real-Time Job Summary

1.1 Job Event Log

Type	Seq. No.	Graph Label	Date	Time	Source	DH Density (ppg)	Comb Pump Rate (bbl/min)	PS Pump Press (psi)	Pump Stg Tot (bbl)	Comments
Event	1	Call Out	12/3/2017	04:00:00	USER					
Event	2	Pre-Convoy Safety Meeting	12/3/2017	09:25:00	USER					
Event	3	Crew Leave Yard	12/3/2017	09:30:00	USER					
Event	4	Arrive At Loc	12/3/2017	10:00:00	USER					
Event	5	Assessment Of Location Safety Meeting	12/3/2017	10:05:00	USER					
Event	6	Spot Equipment	12/3/2017	10:10:00	USER					
Event	7	Pre-Rig Up Safety Meeting	12/3/2017	10:15:00	USER					
Event	8	Rig-Up Equipment	12/3/2017	10:20:00	USER					
Event	9	Pre-Job Safety Meeting	12/3/2017	12:00:00	USER					
Event	10	Start Job	12/3/2017	12:37:56	COM5					TD: 1150 TP: 1143 SJ: 38.1 MW: 9.2 PPG 9 5/8" 32.3#/FT CSG IN 13 1/2" OH WATER TEST: PH: 6.5 POTASSIUM: 450 CHLORIDES: 0 SULFATES: <200 TEMP: 54 DEGREES
Event	11	Test Lines	12/3/2017	12:41:14	COM5	8.33	0.00	3500.00	2.0	3500 PSI TEST
Event	12	Pump Spacer 1	12/3/2017	12:49:21	COM5	8.33	2.90	59.00	20.0	FRESH H2O SPACER
Event	13	Pump Lead Cement	12/3/2017	12:55:50	COM5	12.30	8.00	460.00	53.0	125 SKS @ 12.3 PPG 2.38 YLD 13.77 GAL/SK H2O
Event	14	Pump Tail Cement	12/3/2017	13:03:05	COM5	12.80	8.00	477.00	65.8	175 SKS @ 12.8 PPG 2.11 YLD 11.78 GAL/SK H2O

Event	15	Shutdown	12/3/2017	13:12:14	USER					
Event	16	Drop Top Plug	12/3/2017	13:14:41	COM5					PLUG AWAY
Event	17	Pump Displacement	12/3/2017	13:15:17	COM5	8.33	10.00	685.00	87.0	FRESH H2O DISPLACEMENT
Event	18	Slow Rate	12/3/2017	13:25:34	USER	8.33	2.00	281.00	77.0	
Event	19	Bump Plug	12/3/2017	13:31:02	COM5	8.33	0.00	820.00	87.0	PLUG BUMPED AT CALCULATED DISPLACEMENT. FINAL CIRCULATING PRESSURE WAS 290PSI, PRESSURED UP TO 820PSI
Event	20	Check Floats	12/3/2017	13:32:57	COM5					FLOATS HELD, GAINED 1/2 BBL BACK TO PUMP
Event	21	End Job	12/3/2017	13:34:50	COM5					
Event	22	Post-Job Safety Meeting (Pre Rig-Down)	12/3/2017	13:40:00	USER					GOOD CIRCULATION THROUGHOUT JOB, PIPE WAS LEFT STATIC. CIRCULATED 22 BBL CEMENT TO SURFACE. 20# SUGAR USED, NO ADD HOURS CHARGED.
Event	23	Rig-Down Equipment	12/3/2017	13:45:00	USER					
Event	24	Pre-Convoy Safety Meeting	12/3/2017	14:55:00	USER					THANK YOU FOR CHOOSING HALLIBURTON CEMENTING OF GRAND JUNCTION, COLORAD
Event	25	Crew Leave Location	12/3/2017	15:00:00	USER					ANTHONY ANDREWS AND CREW

TEP - SR 313-12 - 9 5/8" SURFACE



- | | | | |
|---|--------------------------|---------------------|---|
| ① Call Out | ⑧ Rig-Up Equipment | ⑮ Shutdown | ②② Post-Job Safety Meeting (Pre Rig-Down) |
| ② Pre-Convoy Safety Meeting | ⑨ Pre-Job Safety Meeting | ⑯ Drop Top Plug | ②③ Rig-Down Equipment |
| ③ Crew Leave Yard | ⑩ Start Job | ⑰ Pump Displacement | ②④ Pre-Convoy Safety Meeting |
| ④ Arrive At Loc | ⑪ Test Lines | ⑱ Slow Rate | ②⑤ Crew Leave Location |
| ⑤ Assessment Of Location Safety Meeting | ⑫ Pump Spacer 1 | ⑲ Bump Plug | |
| ⑥ Spot Equipment | ⑬ Pump Lead Cement | ⑳ Check Floats | |
| ⑦ Pre-Rig Up Safety Meeting | ⑭ Pump Tail Cement | ㉑ End Job | |

▼ **HALLIBURTON** | iCem® Service

Created: 2017-12-03 11:16:06, Version: 4.2.393

Edit

Customer: TEP ROCKY MOUNTAIN LLC-EBUS

Job Date: 12/3/2017 11:20:38 AM

Well: SR 313-12

Representative: BOBBY BROWN

Sales Order #: 904483065

ELITE 1: RYAN MARTIN/ ANTHONY ANDREWS

TEP - SR 313-12 - 9 5/8" SURFACE

