

# HALLIBURTON

iCem<sup>®</sup> Service

## **TEP ROCKY MOUNTAIN LLC**

**For: JOSH PHILLIPS / DARRELL LEATHERMAN**

### **WARE SR 34-12**

API# 05-045-23438-00

TEP - WARE SR 34-12 - 9 5/8 SURFACE

Job Date: Wednesday, December 13, 2017

Sincerely,

**Grand Junction Engineering**

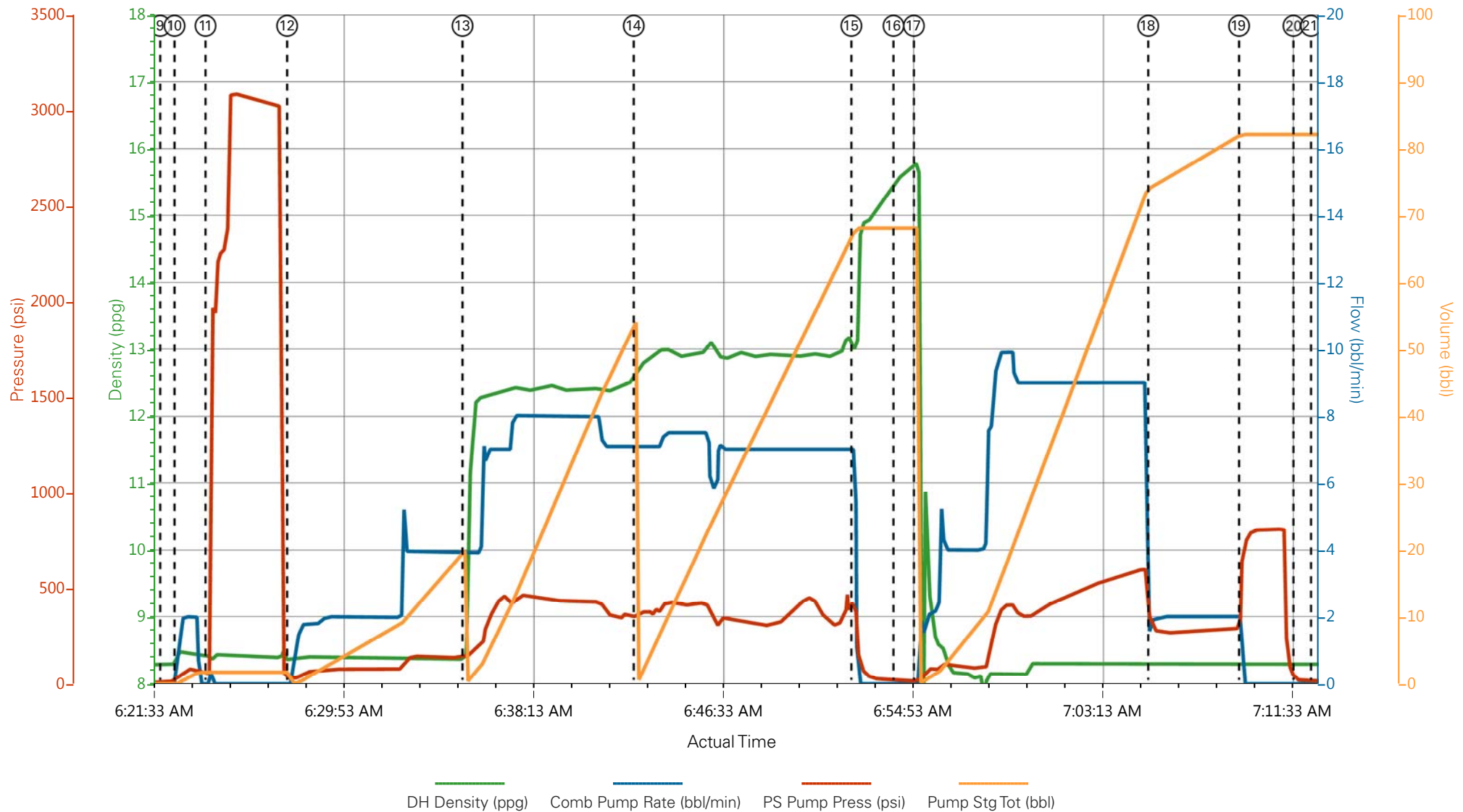
## Real-Time Job Summary

## 1.1 Job Event Log

Type	Seq. No.	Graph Label	Date	Time	Source	Downhole Density (ppg)	Combined Pump Rate (bbl/min)	Pass-Side Pump Pressure (psi)	Pump Stage Total (bbl)	Comments
Event	1	Call Out	12/13/2017	01:30:00	USER					REQUESTED ON LOCATION TIME 0430
Event	2	Pre-Convoy Safety Meeting	12/13/2017	02:30:00	USER					ALL HES EMPLOYEES
Event	3	Arrive At Loc	12/13/2017	03:30:00	USER					ARRIVED ON LOCATION 1 HOUR EARLY, RIG RUNNING CASING
Event	4	Comment	12/13/2017	03:40:00	USER					COMPANY REP OFFERED SDS / WATER TEST: TEMP: 42 PH: 6 CHLORIDES"0
Event	5	Assessment Of Location Safety Meeting	12/13/2017	03:45:00	USER					ALL HES EMPLOYEES
Event	6	Pre-Rig Up Safety Meeting	12/13/2017	03:50:00	USER					ALL HES EMPLOYEES
Event	7	Rig-Up Equipment	12/13/2017	04:00:00	USER					1 HT-400 PUMP TRUCK 1 660 BULK TRUCK 1 F-550 PICKUP
Event	8	Pre-Job Safety Meeting	12/13/2017	06:00:00	USER					ALL HES EMPLOYEES AND RIG CREW RIG CIRCULATED @ 506 GPM PRIOR TO THE JOB @ 100 PSI
Event	9	Start Job	12/13/2017	06:21:58	COM6					TD: 1143 TP: 1133.71 SJ: 44.45 CSG: 9 5/8 32.3# H-40 OH: 13 1/2 MUD WT: 9.4 PPG
Event	10	Prime Lines	12/13/2017	06:22:36	USER	8.33	2.0	77	2.0	PRIME LINES WITH 2 BBLs FRESH WATER
Event	11	Test Lines	12/13/2017	06:23:57	COM6	8.33	0.0	3085Q	2.0	PRESSURE TEST OK
Event	12	Pump Fresh Water Spacer	12/13/2017	06:27:32	COM6	8.33	4.0	135	20	PUMP 20 BBL FRESH WATER SPACER
Event	13	Pump Lead Cement	12/13/2017	06:35:14	COM6	12.3	8.0	53	440	125 SKS 12.3 PPG 2.38 YIELD 13.77 GAL/SK LEAD CEMENT WEIGHT VERIFIED VIA PRESSURIZED SCALES

Event	14	Pump Tail Cement	12/13/2017	06:42:45	COM6	12.8	7.0	310	65.8	175 SKS 12.8 PPG 2.11 YIELD 11.78 GAL/SK LEAD CEMENT WEIGHT VERIFIED VIA PRESSURIZED MUD SCALES
Event	15	Shutdown	12/13/2017	06:52:19	USER					SHUTDOWN TO DROP TOP PLUG
Event	16	Drop Top Plug	12/13/2017	06:54:10	COM6					PLUG AWAY NO PROBLEMS, WASHED UP ON TOP OF THE PLUG AS PER COMPANY REP
Event	17	Pump Displacement	12/13/2017	06:55:03	COM6	8.33	9.0	600	86	FRESH WATER DISPLACEMENT
Event	18	Slow Rate	12/13/2017	07:05:21	USER	8.33	2.0	288	76	SLOW RATE TO BUMP PLUG
Event	19	Bump Plug	12/13/2017	07:09:20	COM6	8.33	2.0	808	86	PSI BEFORE BUMPING PLUG @ 288 BUMPED PLUG UP TO 808 PSI
Event	20	Check Floats	12/13/2017	07:11:43	USER					FLOATS HELD, 3/4 BBL BACK TO DISPLACEMENT TANKS
Event	21	End Job	12/13/2017	07:12:30	COM6					GOOD RETURNS THROUGHOUT JOB, PIPE STATIC THROUGHOUT JOB 23 BBLs OF CEMENT TO SURFACE RIG USED 40#s OF SUGAR
Event	22	Pre-Rig Down Safety Meeting	12/13/2017	07:30:00	USER					ALL HES EMPLOYEES
Event	23	Rig-Down Equipment	12/13/2017	07:35:00	USER					
Event	24	Pre-Convoy Safety Meeting	12/13/2017	08:25:00	USER					ALL HES EMPLOYEES
Event	25	Crew Leave Location	12/13/2017	08:30:00	USER					THANK YOU FOR USING HALLIBURTON CEMENT, DUSTIN SMITH AND CREW

# TEP - WARE SR 34-12 - 9 5/8 SURFACE



- |   |                             |                           |                     |                                |
|---|-----------------------------|---------------------------|---------------------|--------------------------------|
| ① Call Out                              | ⑥ Pre-Rig Up Safety Meeting | ⑪ Test Lines              | ⑯ Drop Top Plug     | 21 End Job                     |
| ② Pre-Convoy Safety Meeting             | ⑦ Rig-Up Equipment          | ⑫ Pump Fresh Water Spacer | ⑰ Pump Displacement | 22 Pre-Rig Down Safety Meeting |
| ③ Arrive At Loc                         | ⑧ Pre-Job Safety Meeting    | ⑬ Pump Lead Cement        | ⑱ Slow Rate         | 23 Rig-Down Equipment          |
| ④ Comment                               | ⑨ Start Job                 | ⑭ Pump Tail Cement        | ⑲ Bump Plug         | 24 Pre-Convoy Safety Meeting   |
| ⑤ Assessment Of Location Safety Meeting | ⑩ Prime Lines               | ⑮ Shutdown                | 20 Check Floats     | 25 Crew Leave Location         |

▼ **HALLIBURTON** | iCem® Service

Created: 2017-12-13 01:21:19, Version: 4.2.393

Edit

Customer: TEP ROCKY MOUNTAIN LLC

Job Date: 12/13/2017 4:40:00 AM

Well: WARE SR 34-12

Representative: JOSH PHILLIPS / DARRELL LEATHERMAN

Sales Order #: 0904499878

ELITE # 2: DUSTIN SMITH / TRAVIS BROWN

# TEP - WARE SR 34-12 - 9 5/8 SURFACE

