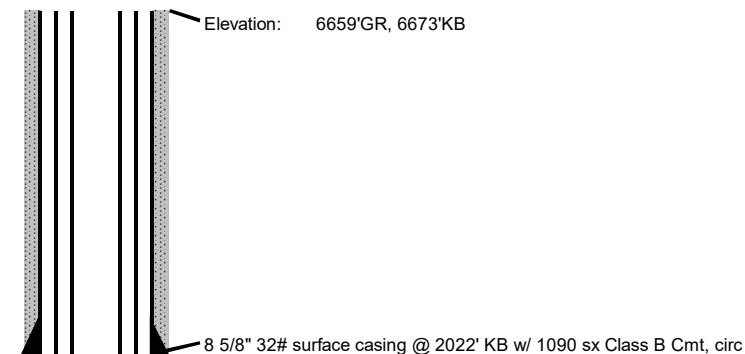




Willie Waschke No. 4 17



Location: Surface: 1300' FEL, 1650' FSL,
Sec 17, T39N, R19W, Dolores
County, CO

Field: Papoose Canyon

Zone: Desert Creek

API #: 05-033-06085

Spud Date: April 13, 1984

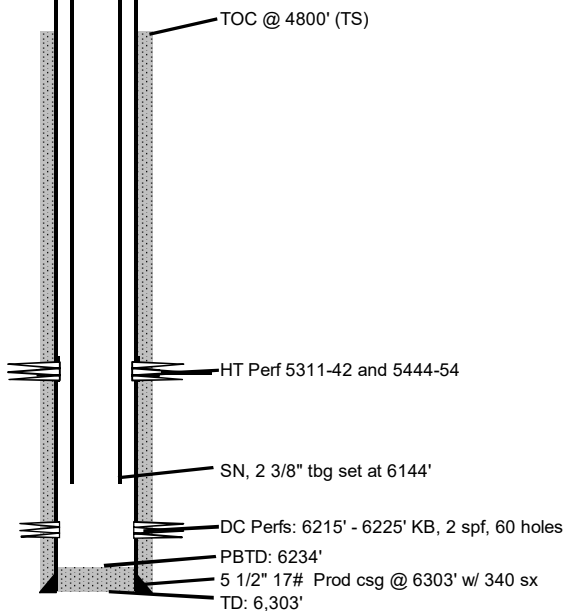
Formation Tops:

Cutler	3105'
Honaker Trail	4508'
Ismay	5910'
Desert Creek	6160'

Directions to well:

Beginning at the intersection of Colorado State Highway 491 and CR 7 located at the north west city limits of Dove Creek Colorado. Turn south on CR 7 travel approximately 2 city blocks, turn west on CR 6 and travel approximately 1 mile. Turn south at "T" intersection for 5 3/4 miles on CR 6. Turn west on CR P for 1/4 mile to "T" intersection. Turn left on CR R and continue south for 2 miles. Turn right for 1/2 mile on CR S. Turn left on CR R for 1/2 mile. Turn right to west on CR S for 1/2 mile. Turn left and continue south on CR R for 7/10ths mile. Turn right on lease road through cattleguard for 1/4 mile to location in the field.

Latitude: 37.63636⁰ Longitude: -108.96246⁰

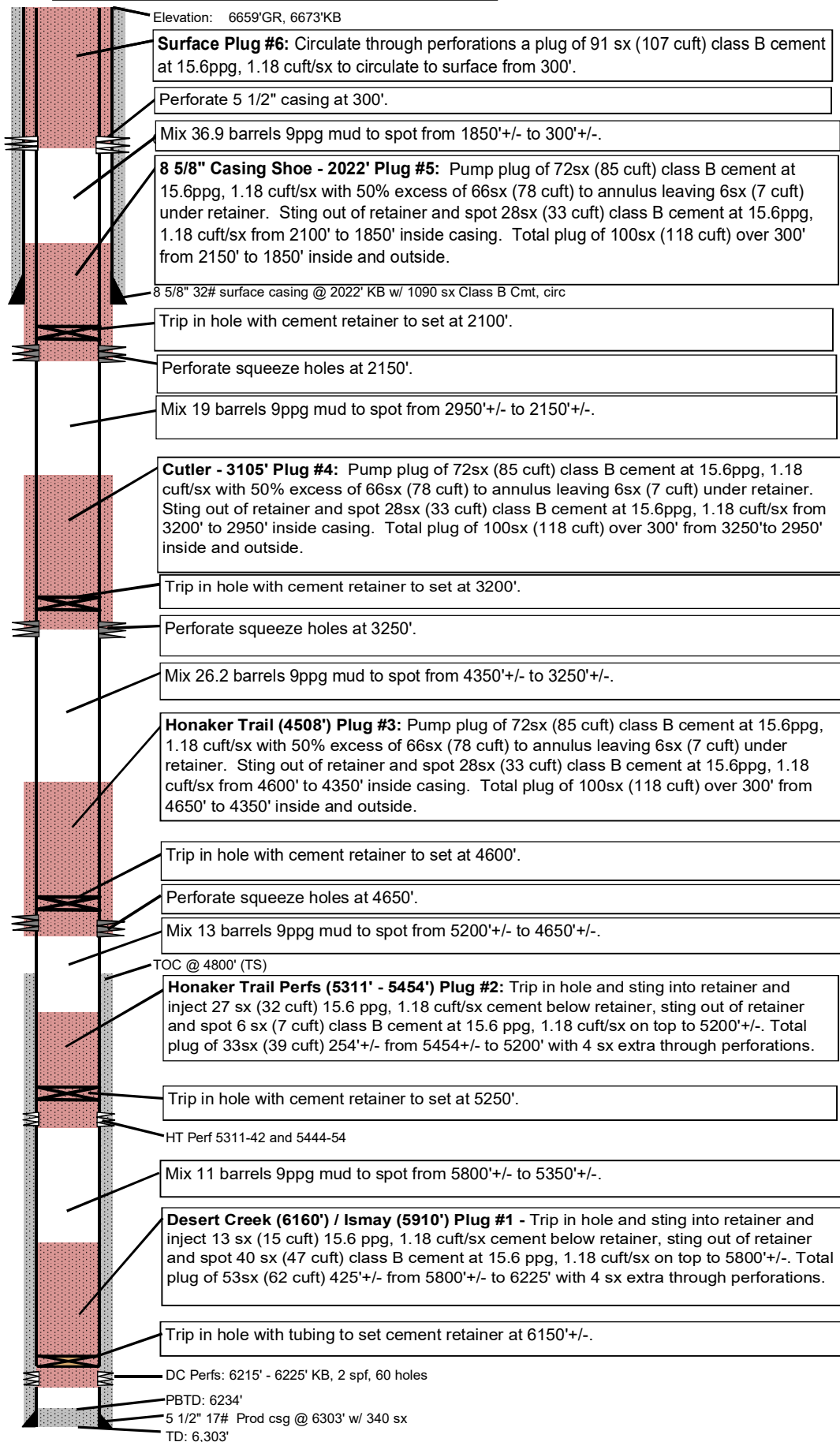


Not to Scale

Rod Seale
3/9/2018

**Formation Tops:**

Cutler	3105'
Honaker Trail	4508'
Ismay	5910'
Desert Creek	6160'

Willie Waschke No. 4 17

Directions: Beginning at the intersection of Colorado State Highway 491 and CR 7 located at the north west city limits of Dove Creek Colorado. Turn south on CR 7 travel approximately 2 city blocks, turn west on CR 6 and travel approximately 1 mile. Turn south at "T" intersection for 5 3/4 miles on CR 6. Turn west on CR P for 1/4 mile to "T" intersection. Turn left on CR R and continue south for 2 miles. Turn right for 1/2 mile on CR S. Turn left on CR R for 1/2 mile. Turn right to west on CR S for 1/2 mile. Turn left and continue south on CR R for 7/10ths mile. Turn right on lease road through cattleguard for 1/4 mile to location in the field.

Latitude: 37.63636⁰ Longitude: -108.96246⁰

Comments: Our goal is to plug and abandon the retired well.

Location: Surface: 1300' FEL, 1650' FSL, Sec 17, T39N, R19W, Dolores County, CO

Field: Papoose Canyon

API #: 05-033-06085

Spud Date: April 13, 1984

Elevation: 6659'GR, 6673'KB

TD: TD: 6,303'

Wellhead:

Tubulars:

Surface: 8 5/8" 32# surface casing @ 2022' KB w/ 1090 sx Class B Cmt, circ

Intermediate:

Production: 5 1/2" 17# Prod csg @ 6303' w/ 340 sx

Tubing: SN, 2 3/8" tbg set at 6144'

Procedure:

- 1) Back drag and clean location as necessary for crew & rig safety.
- 2) Move in well service unit and rig up with associated plugging equipment.
- 3) Check pressure on casings. Bleed pressure off well. Nipple down wellhead and nipple up BOP.
- 4) Trip out of hole with 2 3/8" tubing and production assembly. EOT at 6144'.
- 5) Trip in hole with bit and scraper through bottom perf at 6225'.
- 6) Trip out of hole.
- 7) Trip in hole with tubing to set cement retainer at 6150'+/-.
- 8) Load casing and circulate clean. Test casing to 500psi. Test tubing to 1,000psi.

Procedure:

- 9) **Desert Creek (6160') / Ismay (5910') Plug #1** - Trip in hole and sting into retainer and inject 13 sx (15 cuft) 15.6 ppg, 1.18 cuft/sx cement below retainer, sting out of retainer and spot 40 sx (47 cuft) class B cement at 15.6 ppg, 1.18 cuft/sx on top to 5800'+/-. Total plug of 53sx (62 cuft) 425'+/- from 5800'+/- to 6225' with 4 sx extra through perforations.
- 10) Trip out of hole laying down tubing to 5800'+/-
- 11) Mix 11 barrels 9ppg mud to spot from 5800'+/- to 5350'+/-.
- 12) Trip out of hole laying down tubing to 5250'+/-.
- 13) Trip out of hole standing back tubing.
- 14) Trip in hole with cement retainer to set at 5250'.
- 15) **Honaker Trail Perfs (5311' - 5454') Plug #2:** Trip in hole and sting into retainer and inject 27 sx (32 cuft) 15.6 ppg, 1.18 cuft/sx cement below retainer, sting out of retainer and spot 6 sx (7 cuft) class B cement at 15.6 ppg, 1.18 cuft/sx on top to 5200'+/-. Total plug of 33sx (39 cuft) 254'+/- from 5454'+/- to 5200' with 4 sx extra through perforations.
- 16) Trip out of hole laying down tubing to 5200'+/-.
- 17) Mix 13 barrels 9ppg mud to spot from 5200'+/- to 4650'+/-.
- 18) Trip out of hole laying down tubing to 4600'+/-.
- 19) Trip out of hole standing back tubing.
- 20) Perforate squeeze holes at 4650'.
- 21) Trip in hole with cement retainer to set at 4600'.
- 22) **Honaker Trail (4508') Plug #3:** Pump plug of 72sx (85 cuft) class B cement at 15.6ppg, 1.18 cuft/sx with 50% excess of 66sx (78 cuft) to annulus leaving 6sx (7 cuft) under retainer. Sting out of retainer and spot 28sx (33 cuft) class B cement at 15.6ppg, 1.18 cuft/sx from 4600' to 4350' inside casing. Total plug of 100sx (118 cuft) over 300' from 4650' to 4350' inside and outside.
- 23) Trip out of hole laying down tubing to 4350'+/-.
- 24) Mix 26.2 barrels 9ppg mud to spot from 4350'+/- to 3250'+/-.
- 25) Trip out of hole laying down tubing to 3200'+/-.
- 26) Trip out of hole standing back tubing.
- 27) Perforate squeeze holes at 3250'.
- 28) Trip in hole with cement retainer to set at 3200'.
- 29) **Cutler - 3105' Plug #4:** Pump plug of 72sx (85 cuft) class B cement at 15.6ppg, 1.18 cuft/sx with 50% excess of 66sx (78 cuft) to annulus leaving 6sx (7 cuft) under retainer. Sting out of retainer and spot 28sx (33 cuft) class B cement at 15.6ppg, 1.18 cuft/sx from 3200' to 2950' inside casing. Total plug of 100sx (118 cuft) over 300' from 3250'to 2950' inside and outside.

Procedure:

- 30) Trip out of hole laying down tubing to 2950'+/-.
- 31) Mix 19 barrels 9ppg mud to spot from 2950'+/- to 2150'+/-.
- 32) Trip out of hole laying down tubing to 2150'+/-.
- 33) Trip out of hole standing back tubing.
- 34) Perforate squeeze holes at 2150'.
- 35) Trip in hole with cement retainer to set at 2100'.
- 36) **8 5/8" Casing Shoe - 2022' Plug #5:** Pump plug of 72sx (85 cuft) class B cement at 15.6ppg, 1.18 cuft/sx with 50% excess of 66sx (78 cuft) to annulus leaving 6sx (7 cuft) under retainer. Sting out of retainer and spot 28sx (33 cuft) class B cement at 15.6ppg, 1.18 cuft/sx from 2100' to 1850' inside casing. Total plug of 100sx (118 cuft) over 300' from 2150' to 1850' inside and outside.
- 37) Trip out of hole laying down tubing to 1850'+/-.
- 38) Mix 36.9 barrels 9ppg mud to spot from 1850'+/- to 300'+/-.
- 39) Trip out of hole laying down tubing.
- 40) Perforate 5 1/2" casing at 300'.
- 41) **Surface Plug #6:** Circulate through perforations a plug of 91 sx (107 cuft) class B cement at 15.6ppg, 1.18 cuft/sx to circulate to surface from 300'.
- 42) Cut off wellhead and casings. Top off 5 1/2" casing and 8 5/8" casing filling to surface.
- 43) Install marker as indicated in stipulations.
- 44) Remove equipment and remediate location as indicated in lease agreements, conditions of approval and stipulations.