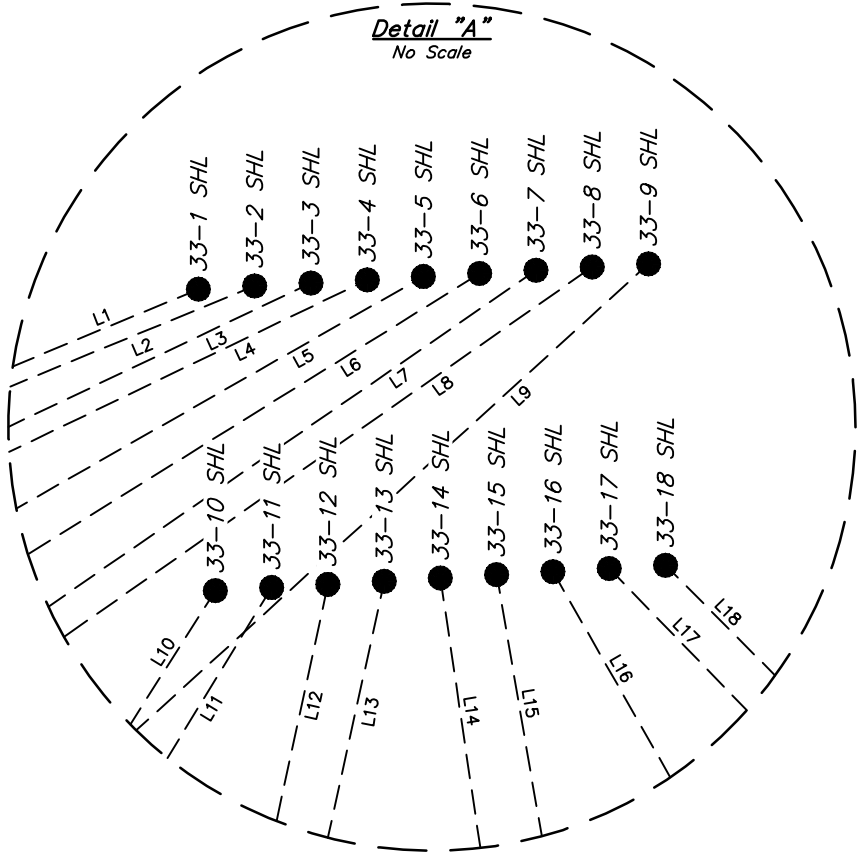
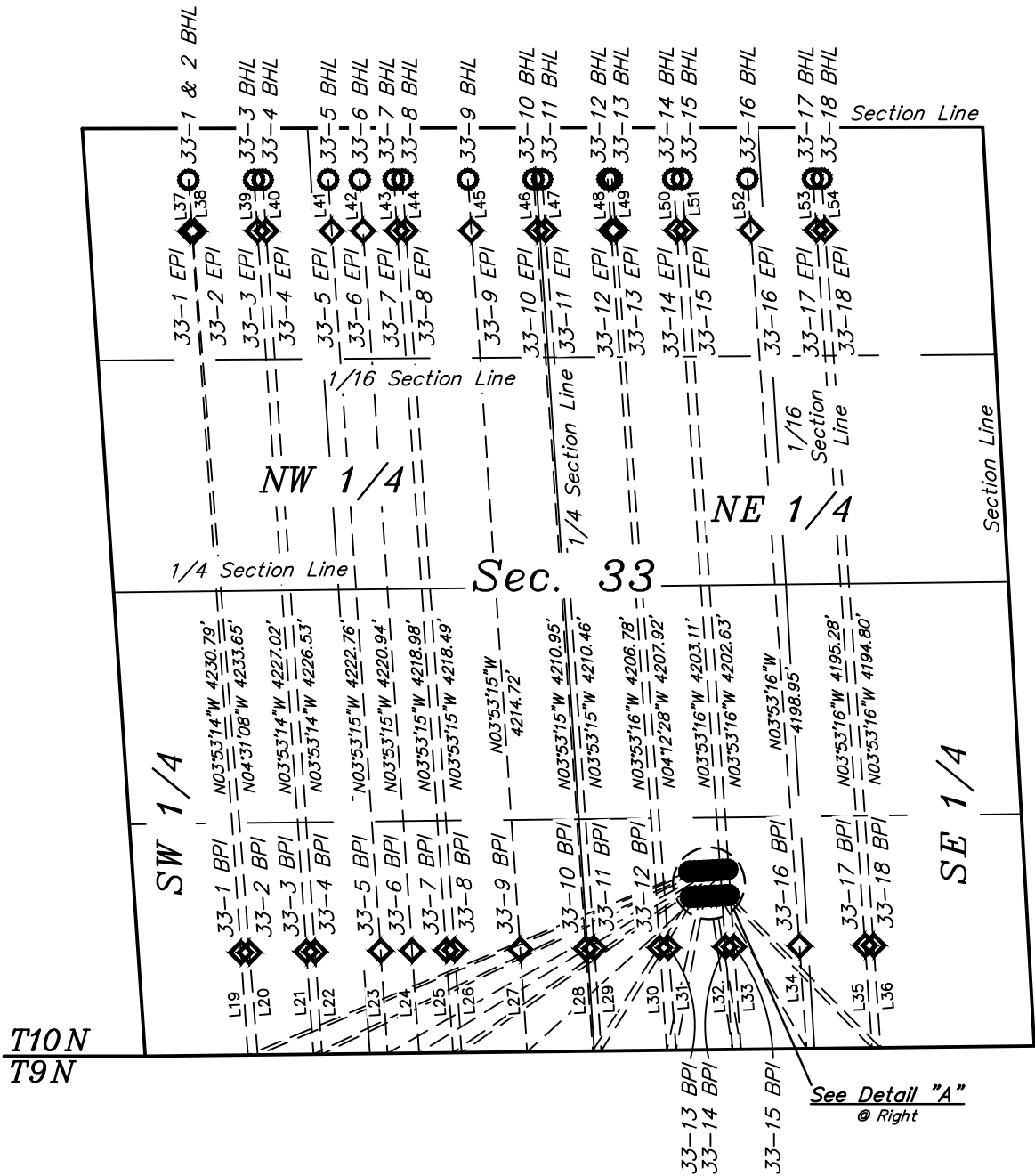




LINE TABLE		
LINE	DIRECTION	LENGTH
L1	S67°26'02"W	2796.52'
L2	S67°11'14"W	2770.36'
L3	S64°34'32"W	2496.51'
L4	S64°20'10"W	2477.03'
L5	S60°18'46"W	2160.56'
L6	S58°08'14"W	2025.89'
L7	S55°24'05"W	1882.20'
L8	S54°59'17"W	1864.59'
L9	S47°40'39"W	1584.57'
L10	S32°28'10"W	1066.86'
L11	S31°25'42"W	1056.03'
L12	S12°14'48"W	919.21'
L13	S10°40'01"W	915.01'
L14	S08°24'54"E	906.85'
L15	S09°46'55"E	911.41'
L16	S29°41'17"E	1030.55'
L17	S44°08'19"E	1243.63'
L18	S44°49'39"E	1259.87'
L19	N03°53'14"W	600.95'
L20	N04°31'08"W	601.36'
L21	N03°53'14"W	600.95'
L22	N03°53'14"W	600.95'
L23	N03°53'15"W	600.95'
L24	N03°53'15"W	600.95'
L25	N03°53'15"W	600.95'
L26	N03°53'15"W	600.95'
L27	N03°53'15"W	600.95'

LINE TABLE		
LINE	DIRECTION	LENGTH
L28	N03°53'15"W	600.95'
L29	N03°53'15"W	600.96'
L30	N03°53'16"W	600.96'
L31	N04°12'28"W	601.16'
L32	N03°53'16"W	600.96'
L33	N03°53'16"W	600.96'
L34	N03°53'16"W	600.96'
L35	N03°53'16"W	600.96'
L36	N03°53'16"W	600.96'
L37	N03°53'14"W	300.66'
L38	N04°31'08"W	300.90'
L39	N03°53'14"W	300.66'
L40	N03°53'14"W	300.66'
L41	N03°53'15"W	300.66'
L42	N03°53'15"W	300.66'
L43	N03°53'15"W	300.66'
L44	N03°53'15"W	300.66'
L45	N03°53'15"W	300.66'
L46	N03°53'15"W	300.66'
L47	N03°53'15"W	300.66'
L48	N03°53'16"W	300.66'
L49	N04°12'28"W	300.77'
L50	N03°53'16"W	300.66'
L51	N03°53'16"W	300.66'
L52	N03°53'16"W	300.66'
L53	N03°53'16"W	300.65'
L54	N03°53'16"W	300.65'



LEGEND:

- = PROPOSED WELLHEAD.
- ◆ = PRODUCTION INTERVAL.
- = TARGET BOTTOM HOLE.

REV: 1 02-07-18 D.COX (BPI & EPI CHANGES)

BISON OIL & GAS II

TIMBRO FED 10-59 33 PAD  
SW 1/4 SE 1/4, SECTION 33, T10N, R59W, 6th P.M.  
WELD COUNTY, COLORADO

SURVEYED BY	JOHNATHON BAYLIFF	01-05-18	SCALE
DRAWN BY	C.C.	01-09-18	1" = 1000'
MULTI-WELL PLAN		FIGURE #5	



UELS, LLC  
Corporate Office \* 85 South 200 East  
Vernal, UT 84078 \* (435) 789-1017