

REV: 1 03-01-18 J.L.G. (PAD NAME FIX)

# LEGEND:

 PROPOSED LOCATION



**UELS, LLC**  
Corporate Office \* 85 South 200 East  
Vernal, UT 84078 \* (435) 789-1017

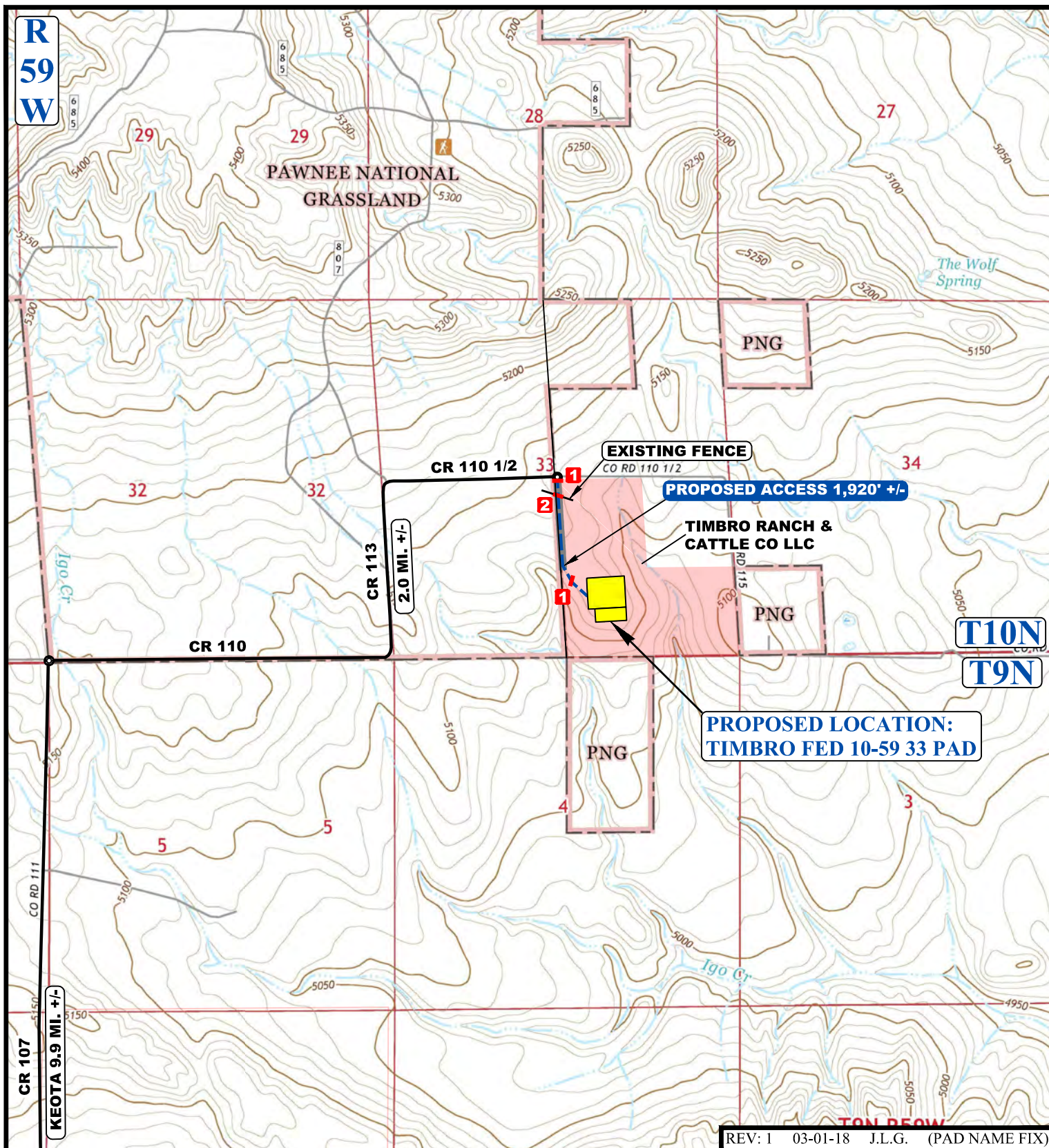


## BISON OIL & GAS II

**TIMBRO FED 10-59 33 PAD**  
SW 1/4 SE 1/4, SECTION 33, T10N, R59W, 6th P.M.  
WELD COUNTY, COLORADO

SURVEYED BY	J.B.	01-05-18	SCALE
DRAWN BY	J.L.G.	01-11-18	1 : 100,000
ACCESS ROAD MAP			TOPO A





REV: 1 03-01-18 J.L.G. (PAD NAME FIX)

NOTE: PARCEL DATA SHOWN HAS BEEN OBTAINED FROM VARIOUS SOURCES AND SHOULD BE USED FOR MAPPING, GRAPHIC AND PLANNING PURPOSES ONLY. NO WARRANTY IS MADE BY UINTAH ENGINEERING AND LAND SURVEYING (UELS) FOR ACCURACY OF THE PARCEL DATA.

#### LEGEND:

- EXISTING ROAD
- PROPOSED ROAD
- 1 INSTALL 18" CULVERT
- 2 INSTALL CATTLE GUARD



**UELS, LLC**  
Corporate Office \* 85 South 200 East  
Vernal, UT 84078 \* (435) 789-1017



#### BISON OIL & GAS II

**TIMBRO FED 10-59 33 PAD**  
SW 1/4 SE 1/4, SECTION 33, T10N, R59W, 6th P.M.  
WELD COUNTY, COLORADO

SURVEYED BY	J.B.	01-05-18	SCALE
DRAWN BY	J.L.G.	01-11-18	1 : 24,000
<b>ACCESS ROAD MAP</b>			<b>TOPO B</b>