

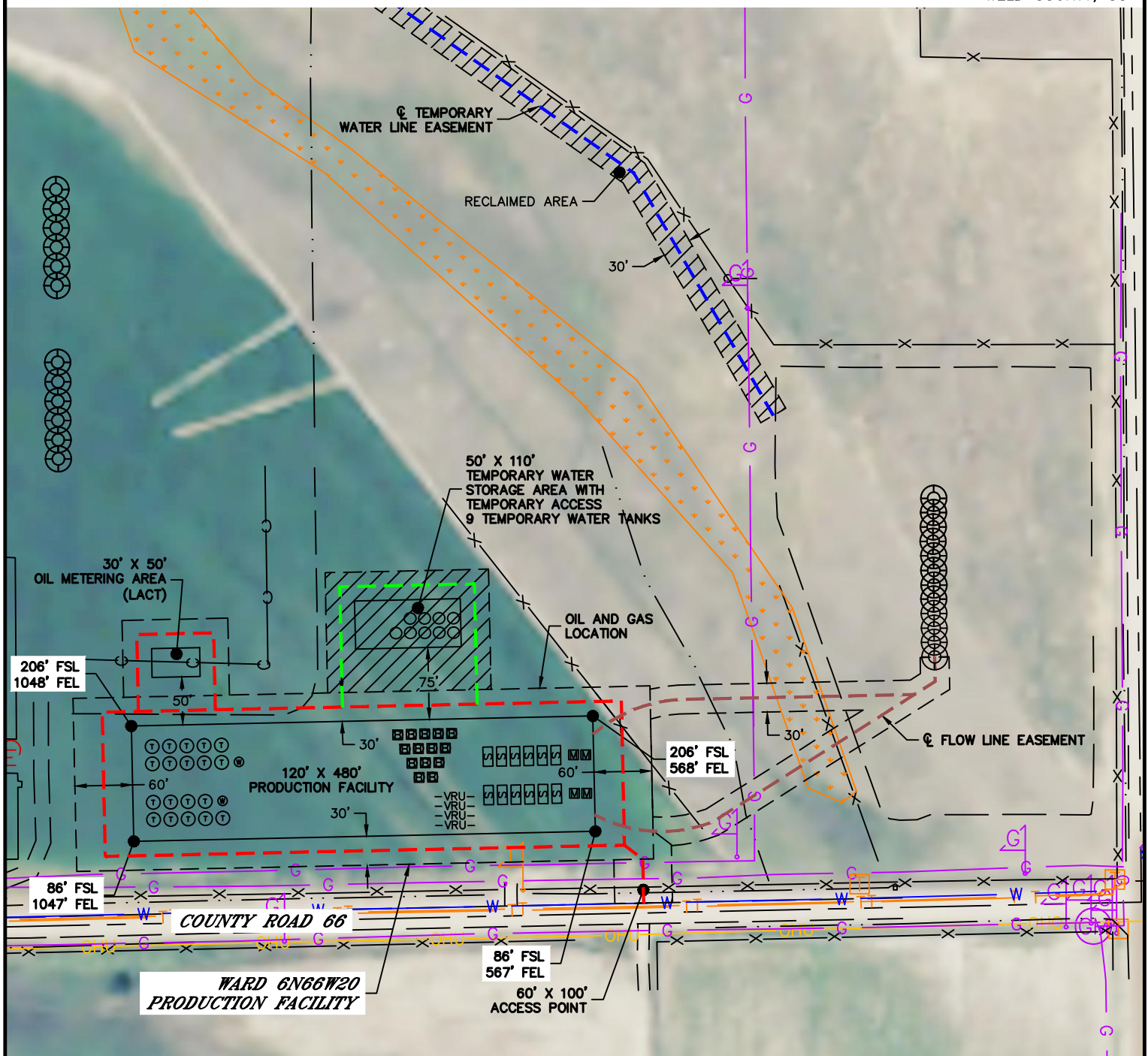


Lat40°, Inc. 6250 W. 10th Street, Unit 2, Greeley, CO 970-515-5294

PROPOSED SCALED FACILITY DRAWING

WARD 6N66W20 PRODUCTION FACILITY

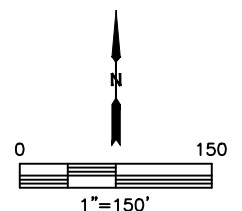
SECTION: 20
TOWNSHIP: 6N
RANGE: 66W
6TH. P.M.
WELD COUNTY, CO



LEGEND

- PROPOSED WELL HEAD
- T TANK BATTERY
- W WATER TANK
- W WATER VAULT
- S SEPARATOR
- ECD
- M METER
- VRU- VAPOR RECOVERY UNIT

TOTAL DISTURBED AREA OF LOCATION: ±5.7 ACRES
TOTAL SIZE OF LOCATION AFTER RECLAMATION: ±3.2 ACRES



DATE: 2/27/2018
PROJECT#: 2017142