

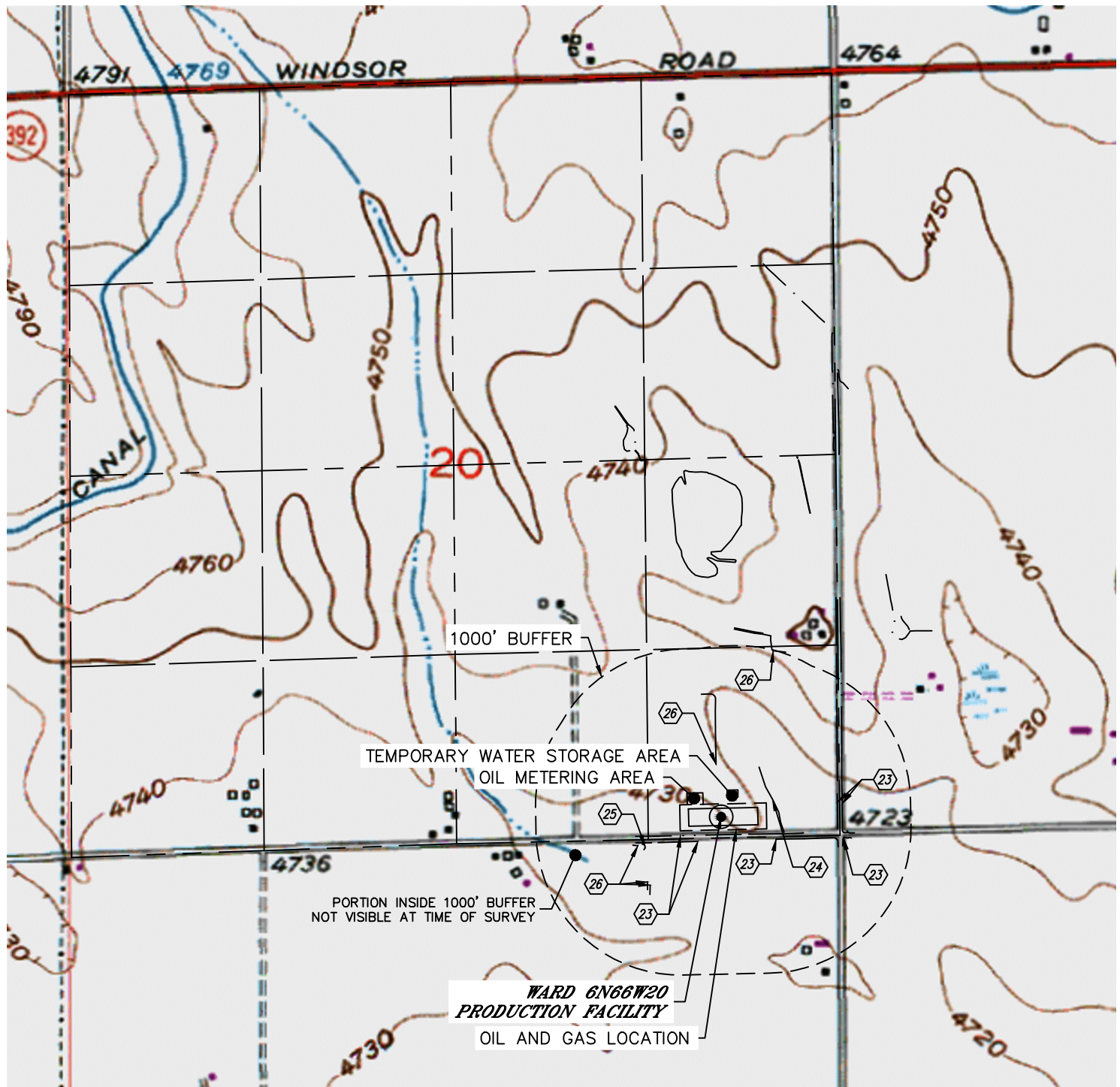


Lat40°, Inc. 6250 W. 10th Street, Unit 2, Greeley, CO 970-515-5294

HYDROLOGY MAP

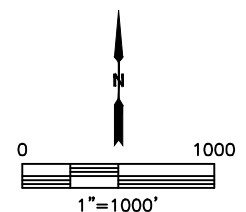
WARD 6N66W20 PRODUCTION FACILITY

SECTION: 20
TOWNSHIP: 6N
RANGE: 66W
6TH. P.M.
WELD COUNTY, CO



DISTANCES MEASURED FROM THE EDGE OF THE OIL AND GAS LOCATION.

- 23 BORROW DITCH 34' & 76' S, 96' & 104' SE, 491' & 524' E
- 24 LOW AREA 51' NE
- 25 POND 267' SW
- 26 DITCH 196' NW, 312', 420' & 430' SW, 996' NE



NEAREST DOWN GRADIENT SURFACE WATER: BORROW DITCH 24' E

DATE: 1/29/2018
PROJECT#: 2017142