



Lat40°, Inc. 6250 W. 10th Street, Unit 2, Greeley, CO 970-515-5294

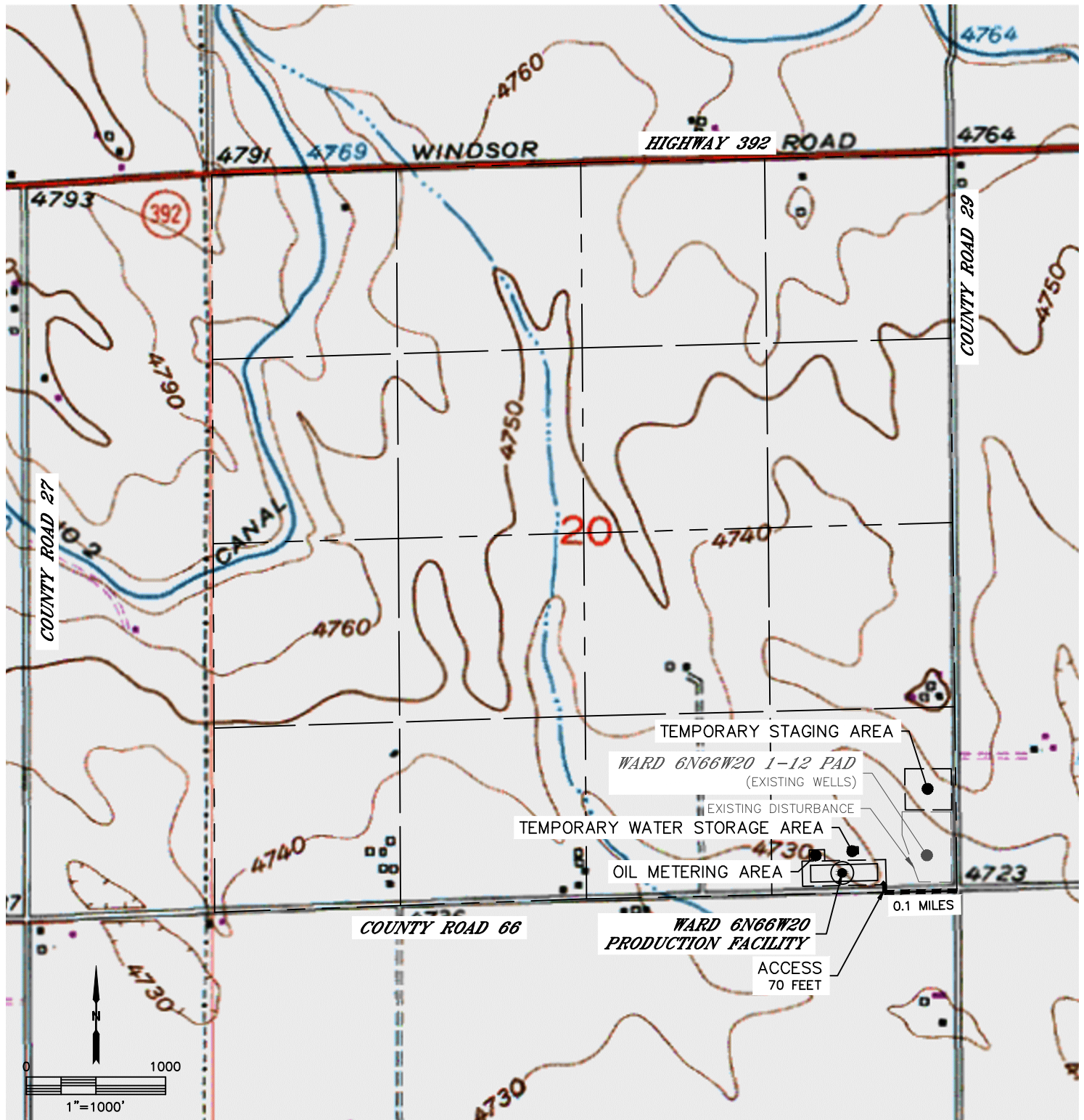
ACCESS ROAD MAP

WARD 6N66W20 1-12 PAD

SECTION: 20
TOWNSHIP: 6N
RANGE: 66W
6TH. P.M.
WELD COUNTY, CO

DRIVING DIRECTIONS TO WARD 6N66W20 1-12 PAD

FROM THE INTERSECTION OF COUNTY ROAD 29 AND COUNTY ROAD 66, GO WEST ON COUNTY ROAD 66 FOR 0.1 MILES TO AN ACCESS TO THE NORTH. THENCE NORTH FOR 70 FEET TO THE PROPOSED PRODUCTION FACILITY.





Lat40°, Inc. 6250 W. 10th Street, Unit 2, Greeley, CO 970-515-5294

ACCESS ROAD MAP

WARD 6N66W20 1-12 PAD

SECTION: 20
TOWNSHIP: 6N
RANGE: 66W
6TH. P.M.
WELD COUNTY, CO

