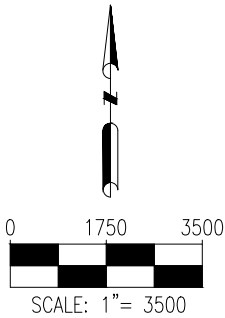
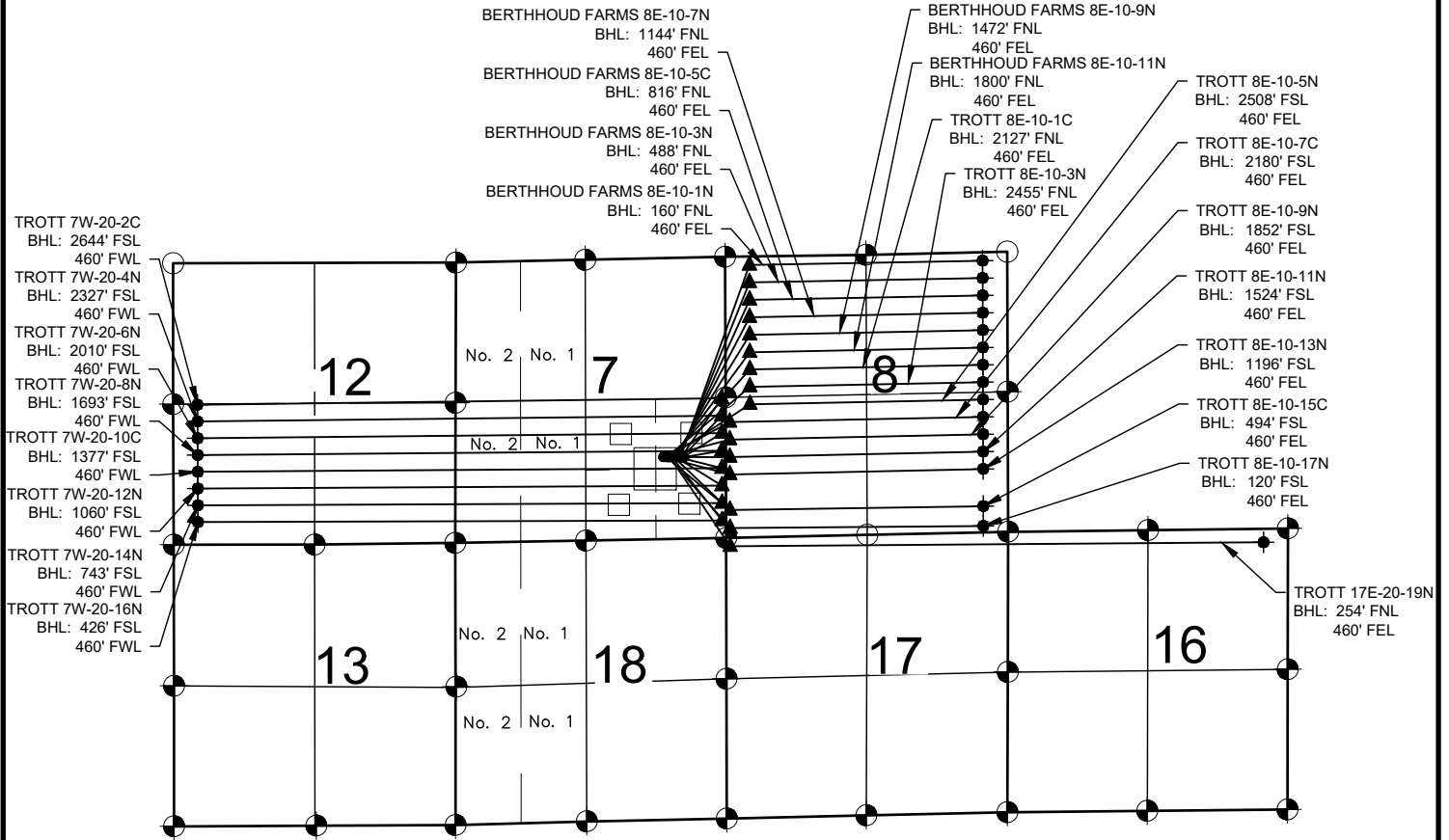


TROTT 7-L PAD MULTI-WELL PLAN



NOTES:

- BERTHOUD FARMS 8E-10-11N TO BE AT 1548' FSL & 1002' FEL.
- BOTTOM HOLE AT 1800' FNL & 460' FEL, SEC. 8.
- BERTHOUD FARMS 8E-10-9N TO BE AT 1547' FSL & 966' FEL.
- BOTTOM HOLE AT 1472' FNL & 460' FEL, SEC. 8.
- BERTHOUD FARMS 8E-10-7N TO BE AT 1546' FSL & 930' FEL.
- BOTTOM HOLE AT 1144' FNL & 460' FEL, SEC. 8.
- BERTHOUD FARMS 8E-10-5C TO BE AT 1545' FSL & 894' FEL.
- BOTTOM HOLE AT 816' FNL & 460' FEL, SEC. 8.
- BERTHOUD FARMS 8E-10-3N TO BE AT 1545' FSL & 876' FEL.
- BOTTOM HOLE AT 488' FNL & 460' FEL, SEC. 8.
- BERTHOUD FARMS 8E-10-1N TO BE AT 1544' FSL & 858' FEL.
- BOTTOM HOLE AT 160' FNL & 460' FEL, SEC. 8.

- TROTT 7W-20-2C TO BE AT 1544' FSL & 840' FEL.
- BOTTOM HOLE AT 2644' FSL & 460' FWL, SEC. 12.
- TROTT 7W-20-4N TO BE AT 1544' FSL & 822' FEL.
- BOTTOM HOLE AT 2327' FSL & 460' FWL, SEC. 12.
- TROTT 7W-20-6N TO BE AT 1543' FSL & 804' FEL.
- BOTTOM HOLE AT 2010' FSL & 460' FWL, SEC. 12.
- TROTT 7W-20-8N TO BE AT 1543' FSL & 786' FEL.
- BOTTOM HOLE AT 1693' FSL & 460' FWL, SEC. 12.
- TROTT 7W-20-10C TO BE AT 1546' FSL & 912' FEL.
- BOTTOM HOLE AT 1377' FSL & 460' FWL, SEC. 12.
- TROTT 7W-20-12N TO BE AT 1547' FSL & 948' FEL.
- BOTTOM HOLE AT 1060' FSL & 460' FWL, SEC. 12.
- TROTT 7W-20-14N TO BE AT 1547' FSL & 984' FEL.
- BOTTOM HOLE AT 743' FSL & 460' FWL, SEC. 12.
- TROTT 7W-20-16N TO BE AT 1548' FSL & 1020' FEL.
- BOTTOM HOLE AT 426' FSL & 460' FWL, SEC. 12.
- TROTT 8E-10-9N TO BE AT 1552' FSL & 1182' FEL.
- BOTTOM HOLE AT 1852' FSL & 460' FWL, SEC. 8.
- TROTT 8E-10-13N TO BE AT 1552' FSL & 1164' FEL.
- BOTTOM HOLE AT 1196' FSL & 460' FWL, SEC. 8.
- TROTT 8E-10-7C TO BE AT 1551' FSL & 1146' FEL.
- BOTTOM HOLE AT 2180' FSL & 460' FWL, SEC. 8.
- TROTT 8E-10-15C TO BE AT 1551' FSL & 1128' FEL.
- BOTTOM HOLE AT 494' FSL & 460' FWL, SEC. 8.
- TROTT 8E-10-3N TO BE AT 1550' FSL & 1110' FEL.
- BOTTOM HOLE AT 2455' FNL & 460' FEL, SEC. 8.
- TROTT 8E-10-17N TO BE AT 1550' FSL & 1092' FEL.
- BOTTOM HOLE AT 120' FSL & 460' FWL, SEC. 8.
- TROTT 8E-10-5N TO BE AT 1550' FSL & 1074' FEL.
- BOTTOM HOLE AT 2508' FSL & 460' FWL, SEC. 8.
- TROTT 17E-20-19N TO BE AT 1549' FSL & 1056' FEL.
- BOTTOM HOLE AT 254' FNL & 460' FWL, SEC. 16.
- TROTT 8E-10-1C TO BE AT 1549' FSL & 1038' FEL.
- BOTTOM HOLE AT 2127' FNL & 460' FWL, SEC. 8.

LEGEND

- = EXISTING MONUMENT
- = CALCULATED POSITION
- = PROPOSED WELL
- ◆ = EXISTING WELL
- ▲ = BOTTOM HOLE
- ▲ = LANDING POINT
- BHL = BOTTOM HOLE LOCATION

NOTES:

- THIS FIELD SURVEY CONFORMS TO THE MINIMUM STANDARDS SET BY THE C.O.G.C.C., RULE NO. 215
- ALL DISTANCES AND BEARINGS SHOWN HEREON ARE GROUND VALUES AS GPS MEASURED IN THE FIELD, WITH TIES TO WELLS MEASURED PERPENDICULAR TO SECTION LINES. THIS LOW DISTORTION PROJECTION (LDP) IS BASED ON THE NORTH AMERICAN DATUM OF 1983, U.S. SURVEY FOOT WITH A LATITUDE ORIGIN OF 40.306152°N, A CENTRAL MERIDIAN LONGITUDE OF 104.998849°W, AND A SCALE FACTOR ON THE CENTRAL MERIDIAN OF 1.000234 (EXACT). THE LDP BASIS OF BEARINGS IS GEODETIC NORTH.
- FIELD VERIFICATION OF MONUMENTS COMPLETED WITHIN 1 YEAR OF SIGNATURE DATE.