

# Weld County, Colorado

## Section 06-T07N-R64W

### Almont 5-03-03L

#### plan1

#### Section Details

Sec	MD	Inc	Azi	TVD	+N/-S	+E/-W	Dleg	Vsect	Annotation
1	0.00	0.00	0.00	0.00	0.00	0.00	0.00	0.00	
2	3000.00	0.00	0.00	3000.00	0.00	0.00	0.00	0.00	KOP Begin 1°/100' build
3	3369.38	3.69	80.00	3369.13	2.07	11.72	1.00	11.75	Begin 3.69° tangent
4	6696.65	3.69	80.00	6689.48	39.28	222.82	0.00	223.30	Begin 10°/100' build/turn
5	7560.22	90.00	89.51	7226.00	49.85	794.56	10.00	795.12	Begin 90.00° lateral
6	17218.01	90.00	89.51	7226.00	131.65	10452.00	0.00	10452.83	PBHL/TD 17218.01 MD/7226.00 TVD

#### DESIGN TARGET DETAILS

Name	TVD	+N/-S	+E/-W	Northing	Easting	Latitude	Longitude
Almont 5-03-03L LP 1157 FNL 470 FWL	7226.00	49.85	794.56	14747679.33	1756648.61	40.60596903	-104.58123690
Almont 5-03-03L PBHL 1157 FNL 470 FEL	7226.00	131.65	10452.00	14747806.76	1766305.54	40.60618755	-104.54644332

Almont 5-03-03L			
Surf loc: 1197 FNL 325 FEL Section 06-T08N-R64W			
NAD83 Colorado - HARN			
Universal Transverse Mercator (US Survey Feet)			
Zone 13N (108 W to 102 W)			
RKB=5001+24 @ 5025.00ft			
Northing	Easting	Latitude	Longitude
14747625.73	1755854.30	40.60583220	-104.58409950

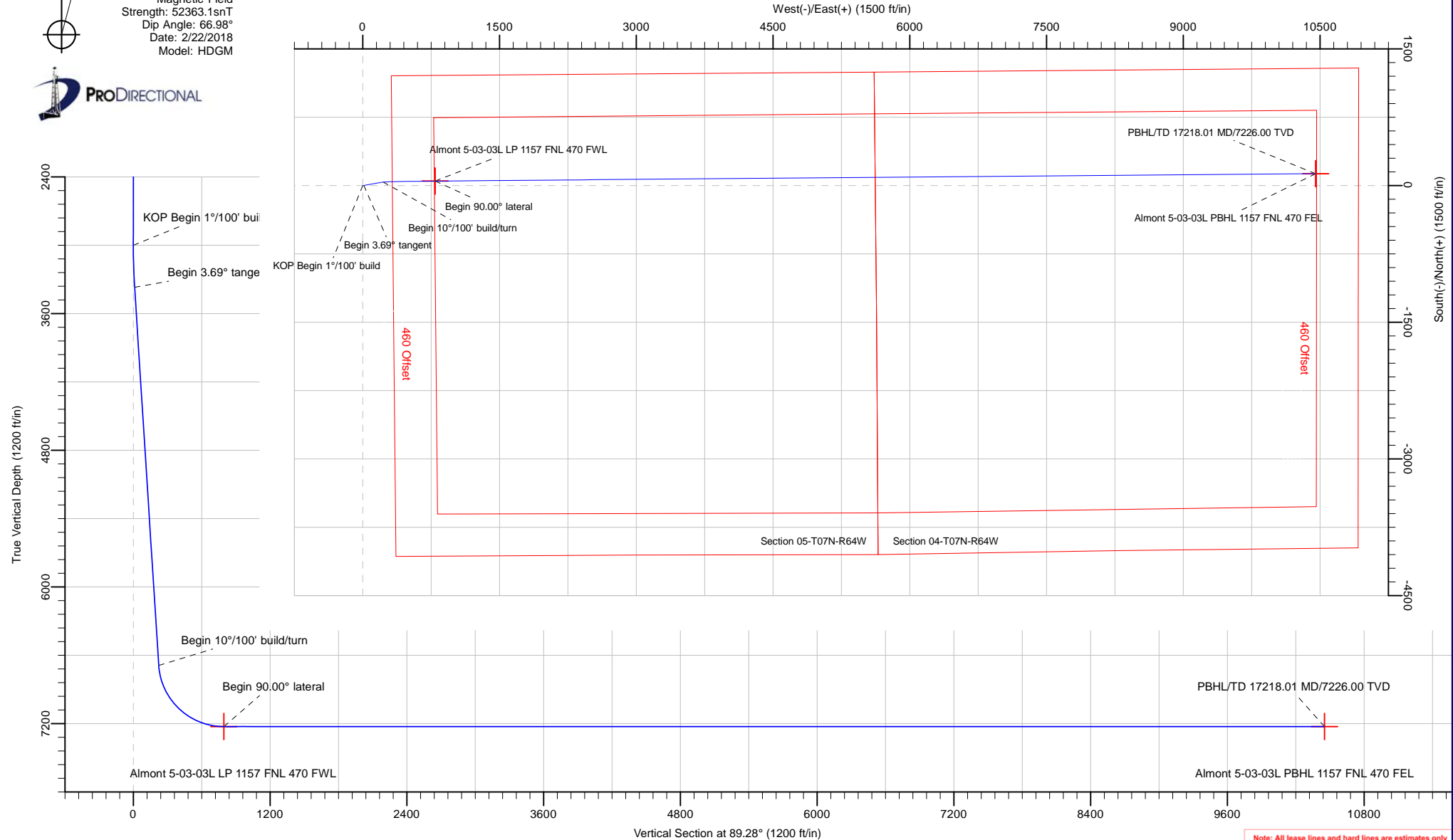


Azimuths to True North  
Magnetic North: 8.00°

Magnetic Field  
Strength: 52363.1snT  
Dip Angle: 66.98°  
Date: 2/22/2018  
Model: HDGM

#### Azimuth Corrections:

To convert a Magnetic Direction to a True Direction, Add 8.00° East



Note: All lease lines and hard lines are estimates only and are subject to customers approval.

<b>Database:</b>	DB_Jul2216dt_v14	<b>Local Co-ordinate Reference:</b>	Well Almont 5-03-03L
<b>Company:</b>	Confluence Resources	<b>TVD Reference:</b>	RKB=5001+24 @ 5025.00ft
<b>Project:</b>	Weld County, Colorado	<b>MD Reference:</b>	RKB=5001+24 @ 5025.00ft
<b>Site:</b>	Section 06-T07N-R64W	<b>North Reference:</b>	True
<b>Well:</b>	Almont 5-03-03L	<b>Survey Calculation Method:</b>	Minimum Curvature
<b>Wellbore:</b>	Original Hole		
<b>Design:</b>	plan1		

<b>Project</b>	Weld County, Colorado		
<b>Map System:</b>	Universal Transverse Mercator (US Survey Feet)	<b>System Datum:</b>	Mean Sea Level
<b>Geo Datum:</b>	NAD83 Colorado - HARN		
<b>Map Zone:</b>	Zone 13N (108 W to 102 W)		

Site		Section 06-T07N-R64W			
Site Position:		Northing:	14,746,184.54 usft	Latitude:	40.60187654
From:	Map	Easting:	1,755,730.03 usft	Longitude:	-104.58457171
Position Uncertainty:	0.00 ft	Slot Radius:	13-3/16 "	Grid Convergence:	0.27 °

Well	Almont 5-03-03L, Surf loc: 1197 FNL 325 FEL Section 06-T08N-R64W					
Well Position	+N/-S	1,440.59 ft	Northing:	14,747,625.73 usft	Latitude:	40.60583219
	+E/-W	131.07 ft	Easting:	1,755,854.30 usft	Longitude:	-104.58409950
Position Uncertainty		0.00 ft	Wellhead Elevation:		Ground Level:	5,001.00 ft

<b>Wellbore</b>	Original Hole				
<b>Magnetics</b>	<b>Model Name</b>	<b>Sample Date</b>	<b>Declination (°)</b>	<b>Dip Angle (°)</b>	<b>Field Strength (nT)</b>
	HDGM	2/22/2018	8.00	66.98	52,363.10000000

<b>Design</b>	plan1			
<b>Audit Notes:</b>				
<b>Version:</b>	<b>Phase:</b>	PLAN	<b>Tie On Depth:</b>	0.00
<b>Vertical Section:</b>	<b>Depth From (TVD) (ft)</b>	<b>+N/-S (ft)</b>	<b>+E/-W (ft)</b>	<b>Direction (°)</b>
	0.00	0.00	0.00	89.28

<b>Plan Survey Tool Program</b>	<b>Date</b>	2/22/2018		
<b>Depth From (ft)</b>	<b>Depth To (ft)</b>	<b>Survey (Wellbore)</b>	<b>Tool Name</b>	<b>Remarks</b>
1	0.00	17,218.01	plan1 (Original Hole)	

<b>Plan Sections</b>										
<b>Measured Depth (ft)</b>	<b>Inclination (°)</b>	<b>Azimuth (°)</b>	<b>Vertical Depth (ft)</b>	<b>+N/-S (ft)</b>	<b>+E/-W (ft)</b>	<b>Dogleg Rate (°/100ft)</b>	<b>Build Rate (°/100ft)</b>	<b>Turn Rate (°/100ft)</b>	<b>TFO (°)</b>	<b>Target</b>
0.00	0.00	0.00	0.00	0.00	0.00	0.00	0.00	0.00	0.00	
3,000.00	0.00	0.00	3,000.00	0.00	0.00	0.00	0.00	0.00	0.00	
3,369.38	3.69	80.00	3,369.13	2.07	11.72	1.00	1.00	0.00	80.00	
6,696.65	3.69	80.00	6,689.48	39.28	222.82	0.00	0.00	0.00	0.00	
7,560.22	90.00	89.51	7,226.00	49.85	794.56	10.00	9.99	1.10	9.53	Almont 5-03-03L LP 1
17,218.01	90.00	89.51	7,226.00	131.65	10,452.00	0.00	0.00	0.00	0.00	Almont 5-03-03L PBH

<b>Database:</b>	DB_Jul2216dt_v14	<b>Local Co-ordinate Reference:</b>	Well Almont 5-03-03L
<b>Company:</b>	Confluence Resources	<b>TVD Reference:</b>	RKB=5001+24 @ 5025.00ft
<b>Project:</b>	Weld County, Colorado	<b>MD Reference:</b>	RKB=5001+24 @ 5025.00ft
<b>Site:</b>	Section 06-T07N-R64W	<b>North Reference:</b>	True
<b>Well:</b>	Almont 5-03-03L	<b>Survey Calculation Method:</b>	Minimum Curvature
<b>Wellbore:</b>	Original Hole		
<b>Design:</b>	plan1		

Planned Survey									
Measured Depth (ft)	Inclination (°)	Azimuth (°)	Vertical Depth (ft)	+N/-S (ft)	+E/-W (ft)	Vertical Section (ft)	Dogleg Rate (°/100ft)	Build Rate (°/100ft)	Turn Rate (°/100ft)
0.00	0.00	0.00	0.00	0.00	0.00	0.00	0.00	0.00	0.00
100.00	0.00	0.00	100.00	0.00	0.00	0.00	0.00	0.00	0.00
200.00	0.00	0.00	200.00	0.00	0.00	0.00	0.00	0.00	0.00
300.00	0.00	0.00	300.00	0.00	0.00	0.00	0.00	0.00	0.00
400.00	0.00	0.00	400.00	0.00	0.00	0.00	0.00	0.00	0.00
500.00	0.00	0.00	500.00	0.00	0.00	0.00	0.00	0.00	0.00
600.00	0.00	0.00	600.00	0.00	0.00	0.00	0.00	0.00	0.00
700.00	0.00	0.00	700.00	0.00	0.00	0.00	0.00	0.00	0.00
800.00	0.00	0.00	800.00	0.00	0.00	0.00	0.00	0.00	0.00
900.00	0.00	0.00	900.00	0.00	0.00	0.00	0.00	0.00	0.00
1,000.00	0.00	0.00	1,000.00	0.00	0.00	0.00	0.00	0.00	0.00
1,100.00	0.00	0.00	1,100.00	0.00	0.00	0.00	0.00	0.00	0.00
1,200.00	0.00	0.00	1,200.00	0.00	0.00	0.00	0.00	0.00	0.00
1,300.00	0.00	0.00	1,300.00	0.00	0.00	0.00	0.00	0.00	0.00
1,400.00	0.00	0.00	1,400.00	0.00	0.00	0.00	0.00	0.00	0.00
1,500.00	0.00	0.00	1,500.00	0.00	0.00	0.00	0.00	0.00	0.00
1,600.00	0.00	0.00	1,600.00	0.00	0.00	0.00	0.00	0.00	0.00
1,700.00	0.00	0.00	1,700.00	0.00	0.00	0.00	0.00	0.00	0.00
1,800.00	0.00	0.00	1,800.00	0.00	0.00	0.00	0.00	0.00	0.00
1,900.00	0.00	0.00	1,900.00	0.00	0.00	0.00	0.00	0.00	0.00
2,000.00	0.00	0.00	2,000.00	0.00	0.00	0.00	0.00	0.00	0.00
2,100.00	0.00	0.00	2,100.00	0.00	0.00	0.00	0.00	0.00	0.00
2,200.00	0.00	0.00	2,200.00	0.00	0.00	0.00	0.00	0.00	0.00
2,300.00	0.00	0.00	2,300.00	0.00	0.00	0.00	0.00	0.00	0.00
2,400.00	0.00	0.00	2,400.00	0.00	0.00	0.00	0.00	0.00	0.00
2,500.00	0.00	0.00	2,500.00	0.00	0.00	0.00	0.00	0.00	0.00
2,600.00	0.00	0.00	2,600.00	0.00	0.00	0.00	0.00	0.00	0.00
2,700.00	0.00	0.00	2,700.00	0.00	0.00	0.00	0.00	0.00	0.00
2,800.00	0.00	0.00	2,800.00	0.00	0.00	0.00	0.00	0.00	0.00
2,900.00	0.00	0.00	2,900.00	0.00	0.00	0.00	0.00	0.00	0.00
3,000.00	0.00	0.00	3,000.00	0.00	0.00	0.00	0.00	0.00	0.00
<b>KOP Begin 1°/100' build</b>									
3,100.00	1.00	80.00	3,099.99	0.15	0.86	0.86	1.00	1.00	0.00
3,200.00	2.00	80.00	3,199.96	0.61	3.44	3.44	1.00	1.00	0.00
3,300.00	3.00	80.00	3,299.86	1.36	7.73	7.75	1.00	1.00	0.00
3,369.38	3.69	80.00	3,369.13	2.07	11.72	11.75	1.00	1.00	0.00
<b>Begin 3.69° tangent</b>									
3,400.00	3.69	80.00	3,399.68	2.41	13.66	13.69	0.00	0.00	0.00
3,500.00	3.69	80.00	3,499.47	3.53	20.01	20.05	0.00	0.00	0.00
3,600.00	3.69	80.00	3,599.27	4.65	26.35	26.41	0.00	0.00	0.00
3,700.00	3.69	80.00	3,699.06	5.76	32.70	32.77	0.00	0.00	0.00
3,800.00	3.69	80.00	3,798.85	6.88	39.04	39.13	0.00	0.00	0.00
3,900.00	3.69	80.00	3,898.64	8.00	45.39	45.49	0.00	0.00	0.00
4,000.00	3.69	80.00	3,998.43	9.12	51.73	51.84	0.00	0.00	0.00
4,100.00	3.69	80.00	4,098.23	10.24	58.08	58.20	0.00	0.00	0.00
4,200.00	3.69	80.00	4,198.02	11.36	64.42	64.56	0.00	0.00	0.00
4,300.00	3.69	80.00	4,297.81	12.47	70.77	70.92	0.00	0.00	0.00
4,400.00	3.69	80.00	4,397.60	13.59	77.11	77.28	0.00	0.00	0.00
4,500.00	3.69	80.00	4,497.40	14.71	83.46	83.63	0.00	0.00	0.00
4,600.00	3.69	80.00	4,597.19	15.83	89.80	89.99	0.00	0.00	0.00
4,700.00	3.69	80.00	4,696.98	16.95	96.14	96.35	0.00	0.00	0.00
4,800.00	3.69	80.00	4,796.77	18.07	102.49	102.71	0.00	0.00	0.00
4,900.00	3.69	80.00	4,896.56	19.19	108.83	109.07	0.00	0.00	0.00

<b>Database:</b>	DB_Jul2216dt_v14	<b>Local Co-ordinate Reference:</b>	Well Almont 5-03-03L
<b>Company:</b>	Confluence Resources	<b>TVD Reference:</b>	RKB=5001+24 @ 5025.00ft
<b>Project:</b>	Weld County, Colorado	<b>MD Reference:</b>	RKB=5001+24 @ 5025.00ft
<b>Site:</b>	Section 06-T07N-R64W	<b>North Reference:</b>	True
<b>Well:</b>	Almont 5-03-03L	<b>Survey Calculation Method:</b>	Minimum Curvature
<b>Wellbore:</b>	Original Hole		
<b>Design:</b>	plan1		

Planned Survey									
Measured Depth (ft)	Inclination (°)	Azimuth (°)	Vertical Depth (ft)	+N/-S (ft)	+E/-W (ft)	Vertical Section (ft)	Dogleg Rate (°/100ft)	Build Rate (°/100ft)	Turn Rate (°/100ft)
5,000.00	3.69	80.00	4,996.36	20.30	115.18	115.43	0.00	0.00	0.00
5,100.00	3.69	80.00	5,096.15	21.42	121.52	121.78	0.00	0.00	0.00
5,200.00	3.69	80.00	5,195.94	22.54	127.87	128.14	0.00	0.00	0.00
5,300.00	3.69	80.00	5,295.73	23.66	134.21	134.50	0.00	0.00	0.00
5,400.00	3.69	80.00	5,395.53	24.78	140.56	140.86	0.00	0.00	0.00
5,500.00	3.69	80.00	5,495.32	25.90	146.90	147.22	0.00	0.00	0.00
5,600.00	3.69	80.00	5,595.11	27.01	153.25	153.57	0.00	0.00	0.00
5,700.00	3.69	80.00	5,694.90	28.13	159.59	159.93	0.00	0.00	0.00
5,800.00	3.69	80.00	5,794.69	29.25	165.94	166.29	0.00	0.00	0.00
5,900.00	3.69	80.00	5,894.49	30.37	172.28	172.65	0.00	0.00	0.00
6,000.00	3.69	80.00	5,994.28	31.49	178.63	179.01	0.00	0.00	0.00
6,100.00	3.69	80.00	6,094.07	32.61	184.97	185.37	0.00	0.00	0.00
6,200.00	3.69	80.00	6,193.86	33.72	191.31	191.72	0.00	0.00	0.00
6,300.00	3.69	80.00	6,293.66	34.84	197.66	198.08	0.00	0.00	0.00
6,400.00	3.69	80.00	6,393.45	35.96	204.00	204.44	0.00	0.00	0.00
6,500.00	3.69	80.00	6,493.24	37.08	210.35	210.80	0.00	0.00	0.00
6,600.00	3.69	80.00	6,593.03	38.20	216.69	217.16	0.00	0.00	0.00
6,696.65	3.69	80.00	6,689.48	39.28	222.82	223.30	0.00	0.00	0.00
Begin 10°/100' build/turn									
6,700.00	4.02	80.79	6,692.82	39.32	223.05	223.53	10.00	9.87	23.59
6,800.00	13.99	87.06	6,791.47	40.50	238.62	239.12	10.00	9.97	6.27
6,900.00	23.99	88.14	6,885.91	41.78	271.09	271.60	10.00	9.99	1.08
7,000.00	33.98	88.61	6,973.27	43.13	319.47	319.99	10.00	10.00	0.47
7,100.00	43.98	88.88	7,050.91	44.49	382.29	382.82	10.00	10.00	0.27
7,200.00	53.98	89.07	7,116.45	45.82	457.63	458.17	10.00	10.00	0.19
7,300.00	63.98	89.22	7,167.92	47.10	543.21	543.76	10.00	10.00	0.15
7,400.00	73.98	89.34	7,203.75	48.27	636.43	636.98	10.00	10.00	0.12
7,500.00	83.98	89.45	7,222.84	49.30	734.45	735.02	10.00	10.00	0.11
7,560.22	90.00	89.51	7,226.00	49.85	794.56	795.12	10.00	10.00	0.11
Begin 90.00° lateral									
7,600.00	90.00	89.51	7,226.00	50.18	834.34	834.90	0.00	0.00	0.00
7,700.00	90.00	89.51	7,226.00	51.03	934.33	934.90	0.00	0.00	0.00
7,800.00	90.00	89.51	7,226.00	51.88	1,034.33	1,034.90	0.00	0.00	0.00
7,900.00	90.00	89.51	7,226.00	52.72	1,134.33	1,134.90	0.00	0.00	0.00
8,000.00	90.00	89.51	7,226.00	53.57	1,234.32	1,234.90	0.00	0.00	0.00
8,100.00	90.00	89.51	7,226.00	54.42	1,334.32	1,334.90	0.00	0.00	0.00
8,200.00	90.00	89.51	7,226.00	55.27	1,434.32	1,434.90	0.00	0.00	0.00
8,300.00	90.00	89.51	7,226.00	56.11	1,534.31	1,534.90	0.00	0.00	0.00
8,400.00	90.00	89.51	7,226.00	56.96	1,634.31	1,634.90	0.00	0.00	0.00
8,500.00	90.00	89.51	7,226.00	57.81	1,734.31	1,734.90	0.00	0.00	0.00
8,600.00	90.00	89.51	7,226.00	58.65	1,834.30	1,834.90	0.00	0.00	0.00
8,700.00	90.00	89.51	7,226.00	59.50	1,934.30	1,934.89	0.00	0.00	0.00
8,800.00	90.00	89.51	7,226.00	60.35	2,034.30	2,034.89	0.00	0.00	0.00
8,900.00	90.00	89.51	7,226.00	61.19	2,134.29	2,134.89	0.00	0.00	0.00
9,000.00	90.00	89.51	7,226.00	62.04	2,234.29	2,234.89	0.00	0.00	0.00
9,100.00	90.00	89.51	7,226.00	62.89	2,334.28	2,334.89	0.00	0.00	0.00
9,200.00	90.00	89.51	7,226.00	63.74	2,434.28	2,434.89	0.00	0.00	0.00
9,300.00	90.00	89.51	7,226.00	64.58	2,534.28	2,534.89	0.00	0.00	0.00
9,400.00	90.00	89.51	7,226.00	65.43	2,634.27	2,634.89	0.00	0.00	0.00
9,500.00	90.00	89.51	7,226.00	66.28	2,734.27	2,734.89	0.00	0.00	0.00
9,600.00	90.00	89.51	7,226.00	67.12	2,834.27	2,834.89	0.00	0.00	0.00
9,700.00	90.00	89.51	7,226.00	67.97	2,934.26	2,934.89	0.00	0.00	0.00
9,800.00	90.00	89.51	7,226.00	68.82	3,034.26	3,034.89	0.00	0.00	0.00
9,900.00	90.00	89.51	7,226.00	69.66	3,134.26	3,134.88	0.00	0.00	0.00

<b>Database:</b>	DB_Jul2216dt_v14	<b>Local Co-ordinate Reference:</b>	Well Almont 5-03-03L
<b>Company:</b>	Confluence Resources	<b>TVD Reference:</b>	RKB=5001+24 @ 5025.00ft
<b>Project:</b>	Weld County, Colorado	<b>MD Reference:</b>	RKB=5001+24 @ 5025.00ft
<b>Site:</b>	Section 06-T07N-R64W	<b>North Reference:</b>	True
<b>Well:</b>	Almont 5-03-03L	<b>Survey Calculation Method:</b>	Minimum Curvature
<b>Wellbore:</b>	Original Hole		
<b>Design:</b>	plan1		

Planned Survey									
Measured Depth (ft)	Inclination (°)	Azimuth (°)	Vertical Depth (ft)	+N/-S (ft)	+E/-W (ft)	Vertical Section (ft)	Dogleg Rate (°/100ft)	Build Rate (°/100ft)	Turn Rate (°/100ft)
10,000.00	90.00	89.51	7,226.00	70.51	3,234.25	3,234.88	0.00	0.00	0.00
10,100.00	90.00	89.51	7,226.00	71.36	3,334.25	3,334.88	0.00	0.00	0.00
10,200.00	90.00	89.51	7,226.00	72.21	3,434.25	3,434.88	0.00	0.00	0.00
10,300.00	90.00	89.51	7,226.00	73.05	3,534.24	3,534.88	0.00	0.00	0.00
10,400.00	90.00	89.51	7,226.00	73.90	3,634.24	3,634.88	0.00	0.00	0.00
10,500.00	90.00	89.51	7,226.00	74.75	3,734.23	3,734.88	0.00	0.00	0.00
10,600.00	90.00	89.51	7,226.00	75.59	3,834.23	3,834.88	0.00	0.00	0.00
10,700.00	90.00	89.51	7,226.00	76.44	3,934.23	3,934.88	0.00	0.00	0.00
10,800.00	90.00	89.51	7,226.00	77.29	4,034.22	4,034.88	0.00	0.00	0.00
10,900.00	90.00	89.51	7,226.00	78.13	4,134.22	4,134.88	0.00	0.00	0.00
11,000.00	90.00	89.51	7,226.00	78.98	4,234.22	4,234.88	0.00	0.00	0.00
11,100.00	90.00	89.51	7,226.00	79.83	4,334.21	4,334.87	0.00	0.00	0.00
11,200.00	90.00	89.51	7,226.00	80.68	4,434.21	4,434.87	0.00	0.00	0.00
11,300.00	90.00	89.51	7,226.00	81.52	4,534.21	4,534.87	0.00	0.00	0.00
11,400.00	90.00	89.51	7,226.00	82.37	4,634.20	4,634.87	0.00	0.00	0.00
11,500.00	90.00	89.51	7,226.00	83.22	4,734.20	4,734.87	0.00	0.00	0.00
11,600.00	90.00	89.51	7,226.00	84.06	4,834.20	4,834.87	0.00	0.00	0.00
11,700.00	90.00	89.51	7,226.00	84.91	4,934.19	4,934.87	0.00	0.00	0.00
11,800.00	90.00	89.51	7,226.00	85.76	5,034.19	5,034.87	0.00	0.00	0.00
11,900.00	90.00	89.51	7,226.00	86.60	5,134.18	5,134.87	0.00	0.00	0.00
12,000.00	90.00	89.51	7,226.00	87.45	5,234.18	5,234.87	0.00	0.00	0.00
12,100.00	90.00	89.51	7,226.00	88.30	5,334.18	5,334.87	0.00	0.00	0.00
12,200.00	90.00	89.51	7,226.00	89.15	5,434.17	5,434.87	0.00	0.00	0.00
12,300.00	90.00	89.51	7,226.00	89.99	5,534.17	5,534.86	0.00	0.00	0.00
12,400.00	90.00	89.51	7,226.00	90.84	5,634.17	5,634.86	0.00	0.00	0.00
12,500.00	90.00	89.51	7,226.00	91.69	5,734.16	5,734.86	0.00	0.00	0.00
12,600.00	90.00	89.51	7,226.00	92.53	5,834.16	5,834.86	0.00	0.00	0.00
12,700.00	90.00	89.51	7,226.00	93.38	5,934.16	5,934.86	0.00	0.00	0.00
12,800.00	90.00	89.51	7,226.00	94.23	6,034.15	6,034.86	0.00	0.00	0.00
12,900.00	90.00	89.51	7,226.00	95.08	6,134.15	6,134.86	0.00	0.00	0.00
13,000.00	90.00	89.51	7,226.00	95.92	6,234.14	6,234.86	0.00	0.00	0.00
13,100.00	90.00	89.51	7,226.00	96.77	6,334.14	6,334.86	0.00	0.00	0.00
13,200.00	90.00	89.51	7,226.00	97.62	6,434.14	6,434.86	0.00	0.00	0.00
13,300.00	90.00	89.51	7,226.00	98.46	6,534.13	6,534.86	0.00	0.00	0.00
13,400.00	90.00	89.51	7,226.00	99.31	6,634.13	6,634.86	0.00	0.00	0.00
13,500.00	90.00	89.51	7,226.00	100.16	6,734.13	6,734.85	0.00	0.00	0.00
13,600.00	90.00	89.51	7,226.00	101.00	6,834.12	6,834.85	0.00	0.00	0.00
13,700.00	90.00	89.51	7,226.00	101.85	6,934.12	6,934.85	0.00	0.00	0.00
13,800.00	90.00	89.51	7,226.00	102.70	7,034.12	7,034.85	0.00	0.00	0.00
13,900.00	90.00	89.51	7,226.00	103.55	7,134.11	7,134.85	0.00	0.00	0.00
14,000.00	90.00	89.51	7,226.00	104.39	7,234.11	7,234.85	0.00	0.00	0.00
14,100.00	90.00	89.51	7,226.00	105.24	7,334.11	7,334.85	0.00	0.00	0.00
14,200.00	90.00	89.51	7,226.00	106.09	7,434.10	7,434.85	0.00	0.00	0.00
14,300.00	90.00	89.51	7,226.00	106.93	7,534.10	7,534.85	0.00	0.00	0.00
14,400.00	90.00	89.51	7,226.00	107.78	7,634.09	7,634.85	0.00	0.00	0.00
14,500.00	90.00	89.51	7,226.00	108.63	7,734.09	7,734.85	0.00	0.00	0.00
14,600.00	90.00	89.51	7,226.00	109.47	7,834.09	7,834.84	0.00	0.00	0.00
14,700.00	90.00	89.51	7,226.00	110.32	7,934.08	7,934.84	0.00	0.00	0.00
14,800.00	90.00	89.51	7,226.00	111.17	8,034.08	8,034.84	0.00	0.00	0.00
14,900.00	90.00	89.51	7,226.00	112.02	8,134.08	8,134.84	0.00	0.00	0.00
15,000.00	90.00	89.51	7,226.00	112.86	8,234.07	8,234.84	0.00	0.00	0.00
15,100.00	90.00	89.51	7,226.00	113.71	8,334.07	8,334.84	0.00	0.00	0.00
15,200.00	90.00	89.51	7,226.00	114.56	8,434.07	8,434.84	0.00	0.00	0.00
15,300.00	90.00	89.51	7,226.00	115.40	8,534.06	8,534.84	0.00	0.00	0.00

<b>Database:</b>	DB_Jul2216dt_v14	<b>Local Co-ordinate Reference:</b>	Well Almont 5-03-03L
<b>Company:</b>	Confluence Resources	<b>TVD Reference:</b>	RKB=5001+24 @ 5025.00ft
<b>Project:</b>	Weld County, Colorado	<b>MD Reference:</b>	RKB=5001+24 @ 5025.00ft
<b>Site:</b>	Section 06-T07N-R64W	<b>North Reference:</b>	True
<b>Well:</b>	Almont 5-03-03L	<b>Survey Calculation Method:</b>	Minimum Curvature
<b>Wellbore:</b>	Original Hole		
<b>Design:</b>	plan1		

Planned Survey										
Measured Depth (ft)	Inclination (°)	Azimuth (°)	Vertical Depth (ft)	+N/-S (ft)	+E/-W (ft)	Vertical Section (ft)	Dogleg Rate (°/100ft)	Build Rate (°/100ft)	Turn Rate (°/100ft)	
15,400.00	90.00	89.51	7,226.00	116.25	8,634.06	8,634.84	0.00	0.00	0.00	
15,500.00	90.00	89.51	7,226.00	117.10	8,734.06	8,734.84	0.00	0.00	0.00	
15,600.00	90.00	89.51	7,226.00	117.94	8,834.05	8,834.84	0.00	0.00	0.00	
15,700.00	90.00	89.51	7,226.00	118.79	8,934.05	8,934.84	0.00	0.00	0.00	
15,800.00	90.00	89.51	7,226.00	119.64	9,034.04	9,034.83	0.00	0.00	0.00	
15,900.00	90.00	89.51	7,226.00	120.49	9,134.04	9,134.83	0.00	0.00	0.00	
16,000.00	90.00	89.51	7,226.00	121.33	9,234.04	9,234.83	0.00	0.00	0.00	
16,100.00	90.00	89.51	7,226.00	122.18	9,334.03	9,334.83	0.00	0.00	0.00	
16,200.00	90.00	89.51	7,226.00	123.03	9,434.03	9,434.83	0.00	0.00	0.00	
16,300.00	90.00	89.51	7,226.00	123.87	9,534.03	9,534.83	0.00	0.00	0.00	
16,400.00	90.00	89.51	7,226.00	124.72	9,634.02	9,634.83	0.00	0.00	0.00	
16,500.00	90.00	89.51	7,226.00	125.57	9,734.02	9,734.83	0.00	0.00	0.00	
16,600.00	90.00	89.51	7,226.00	126.41	9,834.02	9,834.83	0.00	0.00	0.00	
16,700.00	90.00	89.51	7,226.00	127.26	9,934.01	9,934.83	0.00	0.00	0.00	
16,800.00	90.00	89.51	7,226.00	128.11	10,034.01	10,034.83	0.00	0.00	0.00	
16,900.00	90.00	89.51	7,226.00	128.96	10,134.01	10,134.83	0.00	0.00	0.00	
17,000.00	90.00	89.51	7,226.00	129.80	10,234.00	10,234.82	0.00	0.00	0.00	
17,100.00	90.00	89.51	7,226.00	130.65	10,334.00	10,334.82	0.00	0.00	0.00	
17,200.00	90.00	89.51	7,226.00	131.50	10,433.99	10,434.82	0.00	0.00	0.00	
17,218.01	90.00	89.51	7,226.00	131.65	10,452.00	10,452.83	0.00	0.00	0.00	
PBHL/TD 17218.01 MD/7226.00 TVD										

Design Targets										
Target Name	Dip Angle (°)	Dip Dir. (°)	TVD (ft)	+N/-S (ft)	+E/-W (ft)	Northing (usft)	Easting (usft)	Latitude		Longitude
- hit/miss target										
- Shape										
Almont 5-03-03L PBHL 1	0.00	0.00	7,226.00	131.65	10,452.00	14,747,806.76	1,766,305.54	40.60618755		-104.54644332
- plan hits target center										
- Point										
Almont 5-03-03L LP 115	0.00	0.00	7,226.00	49.85	794.56	14,747,679.33	1,756,648.61	40.60596903		-104.58123690
- plan hits target center										
- Point										

Plan Annotations					
Measured Depth (ft)	Vertical Depth (ft)	Local Coordinates			
		+N/-S (ft)	+E/-W (ft)	Comment	
3,000.00	3,000.00	0.00	0.00	KOP Begin 1°/100' build	
3,369.38	3,369.13	2.07	11.72	Begin 3.69° tangent	
6,696.65	6,689.48	39.28	222.82	Begin 10°/100' build/turn	
7,560.22	7,226.00	49.85	794.56	Begin 90.00° lateral	
17,218.01	7,226.00	131.65	10,452.00	PBHL/TD 17218.01 MD/7226.00 TVD	

<b>Database:</b>	DB_Jul2216dt_v14	<b>Local Co-ordinate Reference:</b>	Well Almont 5-03-03L
<b>Company:</b>	Confluence Resources	<b>TVD Reference:</b>	RKB=5001+24 @ 5025.00ft
<b>Project:</b>	Weld County, Colorado	<b>MD Reference:</b>	RKB=5001+24 @ 5025.00ft
<b>Site:</b>	Section 06-T07N-R64W	<b>North Reference:</b>	True
<b>Well:</b>	Almont 5-03-03L	<b>Survey Calculation Method:</b>	Minimum Curvature
<b>Wellbore:</b>	Original Hole		
<b>Design:</b>	plan1		

<b>Project</b>	Weld County, Colorado		
<b>Map System:</b>	Universal Transverse Mercator (US Survey Feet)	<b>System Datum:</b>	Mean Sea Level
<b>Geo Datum:</b>	NAD83 Colorado - HARN		
<b>Map Zone:</b>	Zone 13N (108 W to 102 W)		

Site		Section 06-T07N-R64W			
Site Position:		Northing:	14,746,184.54 usft	Latitude:	40.60187654
From:	Map	Easting:	1,755,730.03 usft	Longitude:	-104.58457171
Position Uncertainty:	0.00 ft	Slot Radius:	13-3/16 "	Grid Convergence:	0.27 °

Well	Almont 5-03-03L, Surf loc: 1197 FNL 325 FEL Section 06-T08N-R64W					
Well Position	+N/-S	0.00 ft	Northing:	14,747,625.73 usft	Latitude:	40.60583219
	+E/-W	0.00 ft	Easting:	1,755,854.30 usft	Longitude:	-104.58409950
Position Uncertainty		0.00 ft	Wellhead Elevation:		Ground Level:	5,001.00 ft

<b>Wellbore</b>	Original Hole				
<b>Magnetics</b>	<b>Model Name</b>	<b>Sample Date</b>	<b>Declination (°)</b>	<b>Dip Angle (°)</b>	<b>Field Strength (nT)</b>
	HDGM	2/22/2018	8.00	66.98	52,363.10000000

<b>Design</b>	plan1			
<b>Audit Notes:</b>				
<b>Version:</b>	<b>Phase:</b>	PLAN	<b>Tie On Depth:</b>	0.00
<b>Vertical Section:</b>	<b>Depth From (TVD) (ft)</b>	<b>+N/-S (ft)</b>	<b>+E/-W (ft)</b>	<b>Direction (°)</b>
	0.00	0.00	0.00	89.28

<b>Plan Survey Tool Program</b>	<b>Date</b>	2/22/2018		
<b>Depth From (ft)</b>	<b>Depth To (ft)</b>	<b>Survey (Wellbore)</b>	<b>Tool Name</b>	<b>Remarks</b>
1	0.00	17,218.01 plan1 (Original Hole)		

<b>Plan Sections</b>										
<b>Measured Depth (ft)</b>	<b>Inclination (°)</b>	<b>Azimuth (°)</b>	<b>Vertical Depth (ft)</b>	<b>+N/-S (ft)</b>	<b>+E/-W (ft)</b>	<b>Dogleg Rate (°/100ft)</b>	<b>Build Rate (°/100ft)</b>	<b>Turn Rate (°/100ft)</b>	<b>TFO (°)</b>	<b>Target</b>
0.00	0.00	0.00	0.00	0.00	0.00	0.00	0.00	0.00	0.00	
3,000.00	0.00	0.00	3,000.00	0.00	0.00	0.00	0.00	0.00	0.00	
3,369.38	3.69	80.00	3,369.13	2.07	11.72	1.00	1.00	0.00	80.00	
6,696.65	3.69	80.00	6,689.48	39.28	222.82	0.00	0.00	0.00	0.00	
7,560.22	90.00	89.51	7,226.00	49.85	794.56	10.00	9.99	1.10	9.53	Almont 5-03-03L LP 1
17,218.01	90.00	89.51	7,226.00	131.65	10,452.00	0.00	0.00	0.00	0.00	Almont 5-03-03L PBH



<b>Database:</b>	DB_Jul2216dt_v14	<b>Local Co-ordinate Reference:</b>	Well Almont 5-03-03L
<b>Company:</b>	Confluence Resources	<b>TVD Reference:</b>	RKB=5001+24 @ 5025.00ft
<b>Project:</b>	Weld County, Colorado	<b>MD Reference:</b>	RKB=5001+24 @ 5025.00ft
<b>Site:</b>	Section 06-T07N-R64W	<b>North Reference:</b>	True
<b>Well:</b>	Almont 5-03-03L	<b>Survey Calculation Method:</b>	Minimum Curvature
<b>Wellbore:</b>	Original Hole		
<b>Design:</b>	plan1		

Planned Survey									
Measured Depth (ft)	Inclination (°)	Azimuth (°)	Vertical Depth (ft)	+N/-S (ft)	+E/-W (ft)	Map Northing (usft)	Map Easting (usft)	Latitude	Longitude
0.00	0.00	0.00	0.00	0.00	0.00	14,747,625.73	1,755,854.30	40.60583219	-104.58409950
100.00	0.00	0.00	100.00	0.00	0.00	14,747,625.73	1,755,854.30	40.60583219	-104.58409950
200.00	0.00	0.00	200.00	0.00	0.00	14,747,625.73	1,755,854.30	40.60583219	-104.58409950
300.00	0.00	0.00	300.00	0.00	0.00	14,747,625.73	1,755,854.30	40.60583219	-104.58409950
400.00	0.00	0.00	400.00	0.00	0.00	14,747,625.73	1,755,854.30	40.60583219	-104.58409950
500.00	0.00	0.00	500.00	0.00	0.00	14,747,625.73	1,755,854.30	40.60583219	-104.58409950
600.00	0.00	0.00	600.00	0.00	0.00	14,747,625.73	1,755,854.30	40.60583219	-104.58409950
700.00	0.00	0.00	700.00	0.00	0.00	14,747,625.73	1,755,854.30	40.60583219	-104.58409950
800.00	0.00	0.00	800.00	0.00	0.00	14,747,625.73	1,755,854.30	40.60583219	-104.58409950
900.00	0.00	0.00	900.00	0.00	0.00	14,747,625.73	1,755,854.30	40.60583219	-104.58409950
1,000.00	0.00	0.00	1,000.00	0.00	0.00	14,747,625.73	1,755,854.30	40.60583219	-104.58409950
1,100.00	0.00	0.00	1,100.00	0.00	0.00	14,747,625.73	1,755,854.30	40.60583219	-104.58409950
1,200.00	0.00	0.00	1,200.00	0.00	0.00	14,747,625.73	1,755,854.30	40.60583219	-104.58409950
1,300.00	0.00	0.00	1,300.00	0.00	0.00	14,747,625.73	1,755,854.30	40.60583219	-104.58409950
1,400.00	0.00	0.00	1,400.00	0.00	0.00	14,747,625.73	1,755,854.30	40.60583219	-104.58409950
1,500.00	0.00	0.00	1,500.00	0.00	0.00	14,747,625.73	1,755,854.30	40.60583219	-104.58409950
1,600.00	0.00	0.00	1,600.00	0.00	0.00	14,747,625.73	1,755,854.30	40.60583219	-104.58409950
1,700.00	0.00	0.00	1,700.00	0.00	0.00	14,747,625.73	1,755,854.30	40.60583219	-104.58409950
1,800.00	0.00	0.00	1,800.00	0.00	0.00	14,747,625.73	1,755,854.30	40.60583219	-104.58409950
1,900.00	0.00	0.00	1,900.00	0.00	0.00	14,747,625.73	1,755,854.30	40.60583219	-104.58409950
2,000.00	0.00	0.00	2,000.00	0.00	0.00	14,747,625.73	1,755,854.30	40.60583219	-104.58409950
2,100.00	0.00	0.00	2,100.00	0.00	0.00	14,747,625.73	1,755,854.30	40.60583219	-104.58409950
2,200.00	0.00	0.00	2,200.00	0.00	0.00	14,747,625.73	1,755,854.30	40.60583219	-104.58409950
2,300.00	0.00	0.00	2,300.00	0.00	0.00	14,747,625.73	1,755,854.30	40.60583219	-104.58409950
2,400.00	0.00	0.00	2,400.00	0.00	0.00	14,747,625.73	1,755,854.30	40.60583219	-104.58409950
2,500.00	0.00	0.00	2,500.00	0.00	0.00	14,747,625.73	1,755,854.30	40.60583219	-104.58409950
2,600.00	0.00	0.00	2,600.00	0.00	0.00	14,747,625.73	1,755,854.30	40.60583219	-104.58409950
2,700.00	0.00	0.00	2,700.00	0.00	0.00	14,747,625.73	1,755,854.30	40.60583219	-104.58409950
2,800.00	0.00	0.00	2,800.00	0.00	0.00	14,747,625.73	1,755,854.30	40.60583219	-104.58409950
2,900.00	0.00	0.00	2,900.00	0.00	0.00	14,747,625.73	1,755,854.30	40.60583219	-104.58409950
3,000.00	0.00	0.00	3,000.00	0.00	0.00	14,747,625.73	1,755,854.30	40.60583219	-104.58409950
<b>KOP Begin 1°/100' build</b>									
3,100.00	1.00	80.00	3,099.99	0.15	0.86	14,747,625.89	1,755,855.16	40.60583261	-104.58409640
3,200.00	2.00	80.00	3,199.96	0.61	3.44	14,747,626.35	1,755,857.73	40.60583386	-104.58408711
3,300.00	3.00	80.00	3,299.86	1.36	7.73	14,747,627.13	1,755,862.03	40.60583594	-104.58407164
3,369.38	3.69	80.00	3,369.13	2.07	11.72	14,747,627.85	1,755,866.01	40.60583787	-104.58405726
<b>Begin 3.69° tangent</b>									
3,400.00	3.69	80.00	3,399.68	2.41	13.66	14,747,628.20	1,755,867.95	40.60583881	-104.58405026
3,500.00	3.69	80.00	3,499.47	3.53	20.01	14,747,629.35	1,755,874.29	40.60584188	-104.58402741
3,600.00	3.69	80.00	3,599.27	4.65	26.35	14,747,630.50	1,755,880.63	40.60584495	-104.58400455
3,700.00	3.69	80.00	3,699.06	5.76	32.70	14,747,631.65	1,755,886.97	40.60584802	-104.58398169
3,800.00	3.69	80.00	3,798.85	6.88	39.04	14,747,632.80	1,755,893.31	40.60585109	-104.58395883
3,900.00	3.69	80.00	3,898.64	8.00	45.39	14,747,633.94	1,755,899.65	40.60585416	-104.58393597
4,000.00	3.69	80.00	3,998.43	9.12	51.73	14,747,635.09	1,755,905.99	40.60585723	-104.58391312
4,100.00	3.69	80.00	4,098.23	10.24	58.08	14,747,636.24	1,755,912.33	40.60586031	-104.58389026
4,200.00	3.69	80.00	4,198.02	11.36	64.42	14,747,637.39	1,755,918.67	40.60586338	-104.58386740
4,300.00	3.69	80.00	4,297.81	12.47	70.77	14,747,638.54	1,755,925.01	40.60586645	-104.58384454
4,400.00	3.69	80.00	4,397.60	13.59	77.11	14,747,639.69	1,755,931.35	40.60586952	-104.58382168
4,500.00	3.69	80.00	4,497.40	14.71	83.46	14,747,640.84	1,755,937.68	40.60587259	-104.58379882
4,600.00	3.69	80.00	4,597.19	15.83	89.80	14,747,641.98	1,755,944.02	40.60587566	-104.58377597
4,700.00	3.69	80.00	4,696.98	16.95	96.14	14,747,643.13	1,755,950.36	40.60587873	-104.58375311
4,800.00	3.69	80.00	4,796.77	18.07	102.49	14,747,644.28	1,755,956.70	40.60588180	-104.58373025
4,900.00	3.69	80.00	4,896.56	19.19	108.83	14,747,645.43	1,755,963.04	40.60588487	-104.58370739
5,000.00	3.69	80.00	4,996.36	20.30	115.18	14,747,646.58	1,755,969.38	40.60588794	-104.58368453



<b>Database:</b>	DB_Jul2216dt_v14	<b>Local Co-ordinate Reference:</b>	Well Almont 5-03-03L
<b>Company:</b>	Confluence Resources	<b>TVD Reference:</b>	RKB=5001+24 @ 5025.00ft
<b>Project:</b>	Weld County, Colorado	<b>MD Reference:</b>	RKB=5001+24 @ 5025.00ft
<b>Site:</b>	Section 06-T07N-R64W	<b>North Reference:</b>	True
<b>Well:</b>	Almont 5-03-03L	<b>Survey Calculation Method:</b>	Minimum Curvature
<b>Wellbore:</b>	Original Hole		
<b>Design:</b>	plan1		

Planned Survey									
Measured Depth (ft)	Inclination (°)	Azimuth (°)	Vertical Depth (ft)	+N/-S (ft)	+E/-W (ft)	Map Northing (usft)	Map Easting (usft)	Latitude	Longitude
5,100.00	3.69	80.00	5,096.15	21.42	121.52	14,747,647.73	1,755,975.72	40.60589102	-104.58366167
5,200.00	3.69	80.00	5,195.94	22.54	127.87	14,747,648.87	1,755,982.06	40.60589409	-104.58363882
5,300.00	3.69	80.00	5,295.73	23.66	134.21	14,747,650.02	1,755,988.40	40.60589716	-104.58361596
5,400.00	3.69	80.00	5,395.53	24.78	140.56	14,747,651.17	1,755,994.74	40.60590023	-104.58359310
5,500.00	3.69	80.00	5,495.32	25.90	146.90	14,747,652.32	1,756,001.08	40.60590330	-104.58357024
5,600.00	3.69	80.00	5,595.11	27.01	153.25	14,747,653.47	1,756,007.42	40.60590637	-104.58354738
5,700.00	3.69	80.00	5,694.90	28.13	159.59	14,747,654.62	1,756,013.76	40.60590944	-104.58352453
5,800.00	3.69	80.00	5,794.69	29.25	165.94	14,747,655.76	1,756,020.09	40.60591251	-104.58350167
5,900.00	3.69	80.00	5,894.49	30.37	172.28	14,747,656.91	1,756,026.43	40.60591558	-104.58347881
6,000.00	3.69	80.00	5,994.28	31.49	178.63	14,747,658.06	1,756,032.77	40.60591865	-104.58345595
6,100.00	3.69	80.00	6,094.07	32.61	184.97	14,747,659.21	1,756,039.11	40.60592172	-104.58343309
6,200.00	3.69	80.00	6,193.86	33.72	191.31	14,747,660.36	1,756,045.45	40.60592480	-104.58341023
6,300.00	3.69	80.00	6,293.66	34.84	197.66	14,747,661.51	1,756,051.79	40.60592787	-104.58338738
6,400.00	3.69	80.00	6,393.45	35.96	204.00	14,747,662.65	1,756,058.13	40.60593094	-104.58336452
6,500.00	3.69	80.00	6,493.24	37.08	210.35	14,747,663.80	1,756,064.47	40.60593401	-104.58334166
6,600.00	3.69	80.00	6,593.03	38.20	216.69	14,747,664.95	1,756,070.81	40.60593708	-104.58331880
6,696.65	3.69	80.00	6,689.48	39.28	222.82	14,747,666.06	1,756,076.94	40.60594005	-104.58329671
Begin 10°/100' build/turn									
6,700.00	4.02	80.79	6,692.82	39.32	223.05	14,747,666.10	1,756,077.16	40.60594015	-104.58329591
6,800.00	13.99	87.06	6,791.47	40.50	238.62	14,747,667.36	1,756,092.73	40.60594340	-104.58323979
6,900.00	23.99	88.14	6,885.91	41.78	271.09	14,747,668.79	1,756,125.19	40.60594692	-104.58312281
7,000.00	33.98	88.61	6,973.27	43.13	319.47	14,747,670.36	1,756,173.56	40.60595061	-104.58294851
7,100.00	43.98	88.88	7,050.91	44.49	382.29	14,747,672.02	1,756,236.37	40.60595434	-104.58272221
7,200.00	53.98	89.07	7,116.45	45.82	457.63	14,747,673.72	1,756,311.70	40.60595801	-104.58245077
7,300.00	63.98	89.22	7,167.92	47.10	543.21	14,747,675.39	1,756,397.28	40.60596150	-104.58214244
7,400.00	73.98	89.34	7,203.75	48.27	636.43	14,747,677.01	1,756,490.49	40.60596471	-104.58180660
7,500.00	83.98	89.45	7,222.84	49.30	734.45	14,747,678.50	1,756,588.51	40.60596755	-104.58145343
7,560.22	90.00	89.51	7,226.00	49.85	794.56	14,747,679.33	1,756,648.61	40.60596903	-104.58123690
Begin 90.00° lateral									
7,600.00	90.00	89.51	7,226.00	50.18	834.34	14,747,679.85	1,756,688.39	40.60596995	-104.58109357
7,700.00	90.00	89.51	7,226.00	51.03	934.33	14,747,681.17	1,756,788.38	40.60597227	-104.58073331
7,800.00	90.00	89.51	7,226.00	51.88	1,034.33	14,747,682.49	1,756,888.37	40.60597458	-104.58037304
7,900.00	90.00	89.51	7,226.00	52.72	1,134.33	14,747,683.81	1,756,988.36	40.60597690	-104.58001278
8,000.00	90.00	89.51	7,226.00	53.57	1,234.32	14,747,685.13	1,757,088.35	40.60597921	-104.57965251
8,100.00	90.00	89.51	7,226.00	54.42	1,334.32	14,747,686.45	1,757,188.35	40.60598152	-104.57929225
8,200.00	90.00	89.51	7,226.00	55.27	1,434.32	14,747,687.77	1,757,288.34	40.60598383	-104.57893199
8,300.00	90.00	89.51	7,226.00	56.11	1,534.31	14,747,689.09	1,757,388.33	40.60598614	-104.57857172
8,400.00	90.00	89.51	7,226.00	56.96	1,634.31	14,747,690.41	1,757,488.32	40.60598845	-104.57821146
8,500.00	90.00	89.51	7,226.00	57.81	1,734.31	14,747,691.73	1,757,588.31	40.60599075	-104.57785120
8,600.00	90.00	89.51	7,226.00	58.65	1,834.30	14,747,693.05	1,757,688.30	40.60599306	-104.57749093
8,700.00	90.00	89.51	7,226.00	59.50	1,934.30	14,747,694.37	1,757,788.29	40.60599537	-104.57713067
8,800.00	90.00	89.51	7,226.00	60.35	2,034.30	14,747,695.69	1,757,888.28	40.60599767	-104.57677040
8,900.00	90.00	89.51	7,226.00	61.19	2,134.29	14,747,697.01	1,757,988.27	40.60599997	-104.57641014
9,000.00	90.00	89.51	7,226.00	62.04	2,234.29	14,747,698.33	1,758,088.26	40.60600227	-104.57604988
9,100.00	90.00	89.51	7,226.00	62.89	2,334.28	14,747,699.65	1,758,188.26	40.60600457	-104.57568961
9,200.00	90.00	89.51	7,226.00	63.74	2,434.28	14,747,700.97	1,758,288.25	40.60600687	-104.57532935
9,300.00	90.00	89.51	7,226.00	64.58	2,534.28	14,747,702.29	1,758,388.24	40.60600917	-104.57496908
9,400.00	90.00	89.51	7,226.00	65.43	2,634.27	14,747,703.60	1,758,488.23	40.60601147	-104.57460882
9,500.00	90.00	89.51	7,226.00	66.28	2,734.27	14,747,704.92	1,758,588.22	40.60601376	-104.57424856
9,600.00	90.00	89.51	7,226.00	67.12	2,834.27	14,747,706.24	1,758,688.21	40.60601606	-104.57388829
9,700.00	90.00	89.51	7,226.00	67.97	2,934.26	14,747,707.56	1,758,788.20	40.60601835	-104.57352803
9,800.00	90.00	89.51	7,226.00	68.82	3,034.26	14,747,708.88	1,758,888.19	40.60602064	-104.57316776
9,900.00	90.00	89.51	7,226.00	69.66	3,134.26	14,747,710.20	1,758,988.18	40.60602293	-104.57280750
10,000.00	90.00	89.51	7,226.00	70.51	3,234.25	14,747,711.52	1,759,088.18	40.60602522	-104.57244724

<b>Database:</b>	DB_Jul2216dt_v14	<b>Local Co-ordinate Reference:</b>	Well Almont 5-03-03L
<b>Company:</b>	Confluence Resources	<b>TVD Reference:</b>	RKB=5001+24 @ 5025.00ft
<b>Project:</b>	Weld County, Colorado	<b>MD Reference:</b>	RKB=5001+24 @ 5025.00ft
<b>Site:</b>	Section 06-T07N-R64W	<b>North Reference:</b>	True
<b>Well:</b>	Almont 5-03-03L	<b>Survey Calculation Method:</b>	Minimum Curvature
<b>Wellbore:</b>	Original Hole		
<b>Design:</b>	plan1		

Planned Survey									
Measured Depth (ft)	Inclination (°)	Azimuth (°)	Vertical Depth (ft)	+N/-S (ft)	+E/-W (ft)	Map Northing (usft)	Map Easting (usft)	Latitude	Longitude
10,100.00	90.00	89.51	7,226.00	71.36	3,334.25	14,747,712.84	1,759,188.17	40.60602751	-104.57208697
10,200.00	90.00	89.51	7,226.00	72.21	3,434.25	14,747,714.16	1,759,288.16	40.60602980	-104.57172671
10,300.00	90.00	89.51	7,226.00	73.05	3,534.24	14,747,715.48	1,759,388.15	40.60603209	-104.57136644
10,400.00	90.00	89.51	7,226.00	73.90	3,634.24	14,747,716.80	1,759,488.14	40.60603437	-104.57100618
10,500.00	90.00	89.51	7,226.00	74.75	3,734.23	14,747,718.12	1,759,588.13	40.60603666	-104.57064592
10,600.00	90.00	89.51	7,226.00	75.59	3,834.23	14,747,719.44	1,759,688.12	40.60603894	-104.57028565
10,700.00	90.00	89.51	7,226.00	76.44	3,934.23	14,747,720.76	1,759,788.11	40.60604122	-104.56992539
10,800.00	90.00	89.51	7,226.00	77.29	4,034.22	14,747,722.08	1,759,888.10	40.60604350	-104.56956512
10,900.00	90.00	89.51	7,226.00	78.13	4,134.22	14,747,723.40	1,759,988.10	40.60604578	-104.56920486
11,000.00	90.00	89.51	7,226.00	78.98	4,234.22	14,747,724.72	1,760,088.09	40.60604806	-104.56884460
11,100.00	90.00	89.51	7,226.00	79.83	4,334.21	14,747,726.04	1,760,188.08	40.60605034	-104.56848433
11,200.00	90.00	89.51	7,226.00	80.68	4,434.21	14,747,727.35	1,760,288.07	40.60605262	-104.56812407
11,300.00	90.00	89.51	7,226.00	81.52	4,534.21	14,747,728.67	1,760,388.06	40.60605489	-104.56776380
11,400.00	90.00	89.51	7,226.00	82.37	4,634.20	14,747,729.99	1,760,488.05	40.60605717	-104.56740354
11,500.00	90.00	89.51	7,226.00	83.22	4,734.20	14,747,731.31	1,760,588.04	40.60605944	-104.56704327
11,600.00	90.00	89.51	7,226.00	84.06	4,834.20	14,747,732.63	1,760,688.03	40.60606171	-104.56668301
11,700.00	90.00	89.51	7,226.00	84.91	4,934.19	14,747,733.95	1,760,788.02	40.60606398	-104.56632275
11,800.00	90.00	89.51	7,226.00	85.76	5,034.19	14,747,735.27	1,760,888.02	40.60606625	-104.56596248
11,900.00	90.00	89.51	7,226.00	86.60	5,134.18	14,747,736.59	1,760,988.01	40.60606852	-104.56560222
12,000.00	90.00	89.51	7,226.00	87.45	5,234.18	14,747,737.91	1,761,088.00	40.60607079	-104.56524195
12,100.00	90.00	89.51	7,226.00	88.30	5,334.18	14,747,739.23	1,761,187.99	40.60607305	-104.56488169
12,200.00	90.00	89.51	7,226.00	89.15	5,434.17	14,747,740.55	1,761,287.98	40.60607532	-104.56452142
12,300.00	90.00	89.51	7,226.00	89.99	5,534.17	14,747,741.87	1,761,387.97	40.60607758	-104.56416116
12,400.00	90.00	89.51	7,226.00	90.84	5,634.17	14,747,743.19	1,761,487.96	40.60607985	-104.56380090
12,500.00	90.00	89.51	7,226.00	91.69	5,734.16	14,747,744.51	1,761,587.95	40.60608211	-104.56344063
12,600.00	90.00	89.51	7,226.00	92.53	5,834.16	14,747,745.83	1,761,687.94	40.60608437	-104.56308037
12,700.00	90.00	89.51	7,226.00	93.38	5,934.16	14,747,747.15	1,761,787.94	40.60608663	-104.56272010
12,800.00	90.00	89.51	7,226.00	94.23	6,034.15	14,747,748.47	1,761,887.93	40.60608889	-104.56235984
12,900.00	90.00	89.51	7,226.00	95.08	6,134.15	14,747,749.79	1,761,987.92	40.60609115	-104.56199957
13,000.00	90.00	89.51	7,226.00	95.92	6,234.14	14,747,751.11	1,762,087.91	40.60609340	-104.56163931
13,100.00	90.00	89.51	7,226.00	96.77	6,334.14	14,747,752.42	1,762,187.90	40.60609566	-104.56127904
13,200.00	90.00	89.51	7,226.00	97.62	6,434.14	14,747,753.74	1,762,287.89	40.60609791	-104.56091878
13,300.00	90.00	89.51	7,226.00	98.46	6,534.13	14,747,755.06	1,762,387.88	40.60610016	-104.56055852
13,400.00	90.00	89.51	7,226.00	99.31	6,634.13	14,747,756.38	1,762,487.87	40.60610242	-104.56019825
13,500.00	90.00	89.51	7,226.00	100.16	6,734.13	14,747,757.70	1,762,587.86	40.60610467	-104.55983799
13,600.00	90.00	89.51	7,226.00	101.00	6,834.12	14,747,759.02	1,762,687.86	40.60610692	-104.55947772
13,700.00	90.00	89.51	7,226.00	101.85	6,934.12	14,747,760.34	1,762,787.85	40.60610917	-104.55911746
13,800.00	90.00	89.51	7,226.00	102.70	7,034.12	14,747,761.66	1,762,887.84	40.60611141	-104.55875719
13,900.00	90.00	89.51	7,226.00	103.55	7,134.11	14,747,762.98	1,762,987.83	40.60611366	-104.55839693
14,000.00	90.00	89.51	7,226.00	104.39	7,234.11	14,747,764.30	1,763,087.82	40.60611590	-104.55803666
14,100.00	90.00	89.51	7,226.00	105.24	7,334.11	14,747,765.62	1,763,187.81	40.60611815	-104.55767640
14,200.00	90.00	89.51	7,226.00	106.09	7,434.10	14,747,766.94	1,763,287.80	40.60612039	-104.55731613
14,300.00	90.00	89.51	7,226.00	106.93	7,534.10	14,747,768.26	1,763,387.79	40.60612263	-104.55695587
14,400.00	90.00	89.51	7,226.00	107.78	7,634.09	14,747,769.58	1,763,487.78	40.60612487	-104.55659561
14,500.00	90.00	89.51	7,226.00	108.63	7,734.09	14,747,770.90	1,763,587.78	40.60612711	-104.55623534
14,600.00	90.00	89.51	7,226.00	109.47	7,834.09	14,747,772.22	1,763,687.77	40.60612935	-104.55587508
14,700.00	90.00	89.51	7,226.00	110.32	7,934.08	14,747,773.54	1,763,787.76	40.60613159	-104.55551481
14,800.00	90.00	89.51	7,226.00	111.17	8,034.08	14,747,774.86	1,763,887.75	40.60613382	-104.55515455
14,900.00	90.00	89.51	7,226.00	112.02	8,134.08	14,747,776.17	1,763,987.74	40.60613606	-104.55479428
15,000.00	90.00	89.51	7,226.00	112.86	8,234.07	14,747,777.49	1,764,087.73	40.60613829	-104.55443402
15,100.00	90.00	89.51	7,226.00	113.71	8,334.07	14,747,778.81	1,764,187.72	40.60614053	-104.55407375
15,200.00	90.00	89.51	7,226.00	114.56	8,434.07	14,747,780.13	1,764,287.71	40.60614276	-104.55371349
15,300.00	90.00	89.51	7,226.00	115.40	8,534.06	14,747,781.45	1,764,387.70	40.60614499	-104.55335322
15,400.00	90.00	89.51	7,226.00	116.25	8,634.06	14,747,782.77	1,764,487.70	40.60614722	-104.55299296
15,500.00	90.00	89.51	7,226.00	117.10	8,734.06	14,747,784.09	1,764,587.69	40.60614945	-104.55263269

<b>Database:</b>	DB_Jul2216dt_v14	<b>Local Co-ordinate Reference:</b>	Well Almont 5-03-03L
<b>Company:</b>	Confluence Resources	<b>TVD Reference:</b>	RKB=5001+24 @ 5025.00ft
<b>Project:</b>	Weld County, Colorado	<b>MD Reference:</b>	RKB=5001+24 @ 5025.00ft
<b>Site:</b>	Section 06-T07N-R64W	<b>North Reference:</b>	True
<b>Well:</b>	Almont 5-03-03L	<b>Survey Calculation Method:</b>	Minimum Curvature
<b>Wellbore:</b>	Original Hole		
<b>Design:</b>	plan1		

Planned Survey									
Measured Depth (ft)	Inclination (°)	Azimuth (°)	Vertical Depth (ft)	+N/-S (ft)	+E/-W (ft)	Map Northing (usft)	Map Easting (usft)	Latitude	Longitude
15,600.00	90.00	89.51	7,226.00	117.94	8,834.05	14,747,785.41	1,764,687.68	40.60615167	-104.55227243
15,700.00	90.00	89.51	7,226.00	118.79	8,934.05	14,747,786.73	1,764,787.67	40.60615390	-104.55191216
15,800.00	90.00	89.51	7,226.00	119.64	9,034.04	14,747,788.05	1,764,887.66	40.60615612	-104.55155190
15,900.00	90.00	89.51	7,226.00	120.49	9,134.04	14,747,789.37	1,764,987.65	40.60615835	-104.55119163
16,000.00	90.00	89.51	7,226.00	121.33	9,234.04	14,747,790.69	1,765,087.64	40.60616057	-104.55083137
16,100.00	90.00	89.51	7,226.00	122.18	9,334.03	14,747,792.01	1,765,187.63	40.60616279	-104.55047110
16,200.00	90.00	89.51	7,226.00	123.03	9,434.03	14,747,793.33	1,765,287.62	40.60616501	-104.55011084
16,300.00	90.00	89.51	7,226.00	123.87	9,534.03	14,747,794.65	1,765,387.62	40.60616723	-104.54975057
16,400.00	90.00	89.51	7,226.00	124.72	9,634.02	14,747,795.97	1,765,487.61	40.60616945	-104.54939031
16,500.00	90.00	89.51	7,226.00	125.57	9,734.02	14,747,797.29	1,765,587.60	40.60617167	-104.54903004
16,600.00	90.00	89.51	7,226.00	126.41	9,834.02	14,747,798.61	1,765,687.59	40.60617388	-104.54866978
16,700.00	90.00	89.51	7,226.00	127.26	9,934.01	14,747,799.92	1,765,787.58	40.60617610	-104.54830951
16,800.00	90.00	89.51	7,226.00	128.11	10,034.01	14,747,801.24	1,765,887.57	40.60617831	-104.54794925
16,900.00	90.00	89.51	7,226.00	128.96	10,134.01	14,747,802.56	1,765,987.56	40.60618052	-104.54758898
17,000.00	90.00	89.51	7,226.00	129.80	10,234.00	14,747,803.88	1,766,087.55	40.60618273	-104.54722872
17,100.00	90.00	89.51	7,226.00	130.65	10,334.00	14,747,805.20	1,766,187.54	40.60618494	-104.54686845
17,200.00	90.00	89.51	7,226.00	131.50	10,433.99	14,747,806.52	1,766,287.53	40.60618715	-104.54650819
17,218.01	90.00	89.51	7,226.00	131.65	10,452.00	14,747,806.76	1,766,305.54	40.60618755	-104.54644332
PBHL/TD 17218.01 MD/7226.00 TVD									

Design Targets									
Target Name	Dip Angle (°)	Dip Dir. (°)	TVD (ft)	+N/-S (ft)	+E/-W (ft)	Northing (usft)	Easting (usft)	Latitude	Longitude
- hit/miss target									
- Shape									
Almont 5-03-03L PBHL 1	0.00	0.00	7,226.00	131.65	10,452.00	14,747,806.76	1,766,305.54	40.60618755	-104.54644332
- plan hits target center									
- Point									
Almont 5-03-03L LP 115	0.00	0.00	7,226.00	49.85	794.56	14,747,679.33	1,756,648.61	40.60596903	-104.58123690
- plan hits target center									
- Point									

Plan Annotations				
Measured Depth (ft)	Vertical Depth (ft)	Local Coordinates		Comment
		+N/-S (ft)	+E/-W (ft)	
3,000.00	3,000.00	0.00	0.00	KOP Begin 1°/100' build
3,369.38	3,369.13	2.07	11.72	Begin 3.69° tangent
6,696.65	6,689.48	39.28	222.82	Begin 10°/100' build/turn
7,560.22	7,226.00	49.85	794.56	Begin 90.00° lateral
17,218.01	7,226.00	131.65	10,452.00	PBHL/TD 17218.01 MD/7226.00 TVD