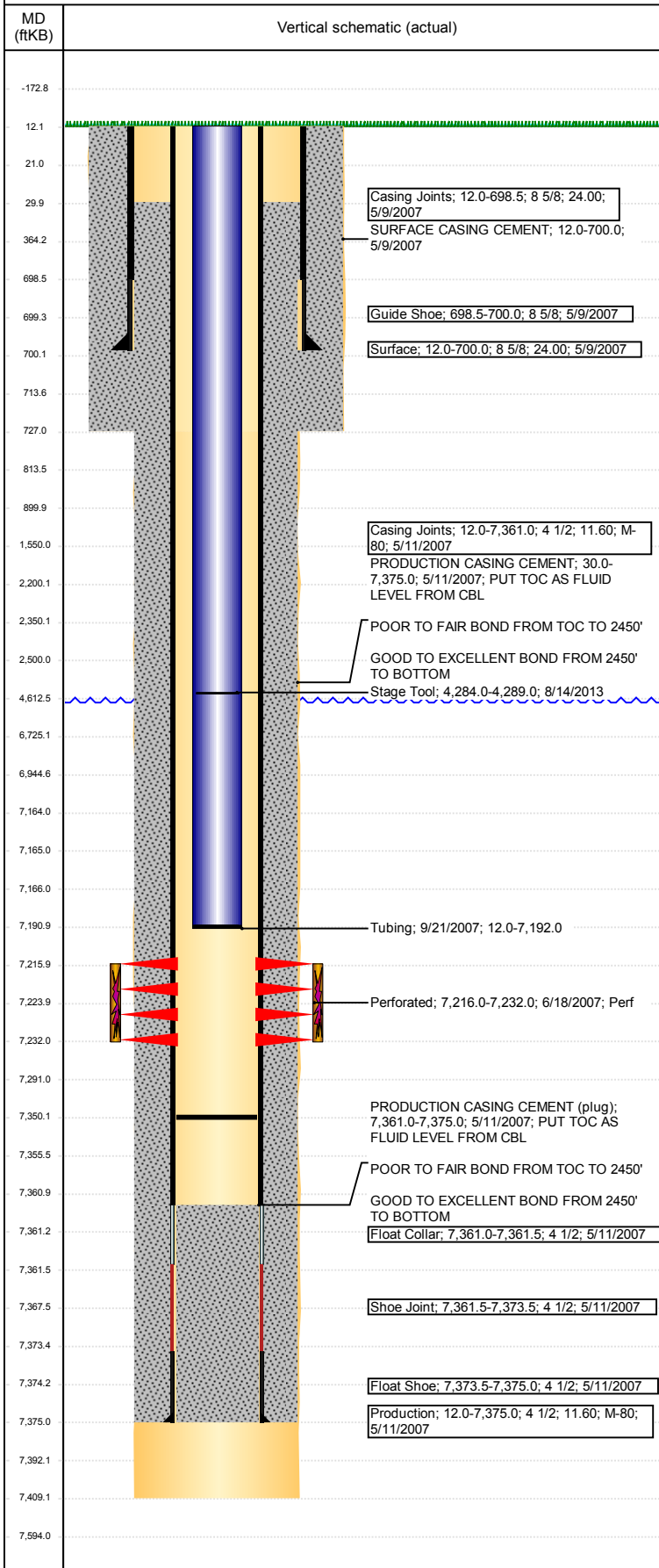


Wellbore Schematic Input Report

Well Name: BURBACH 15-23

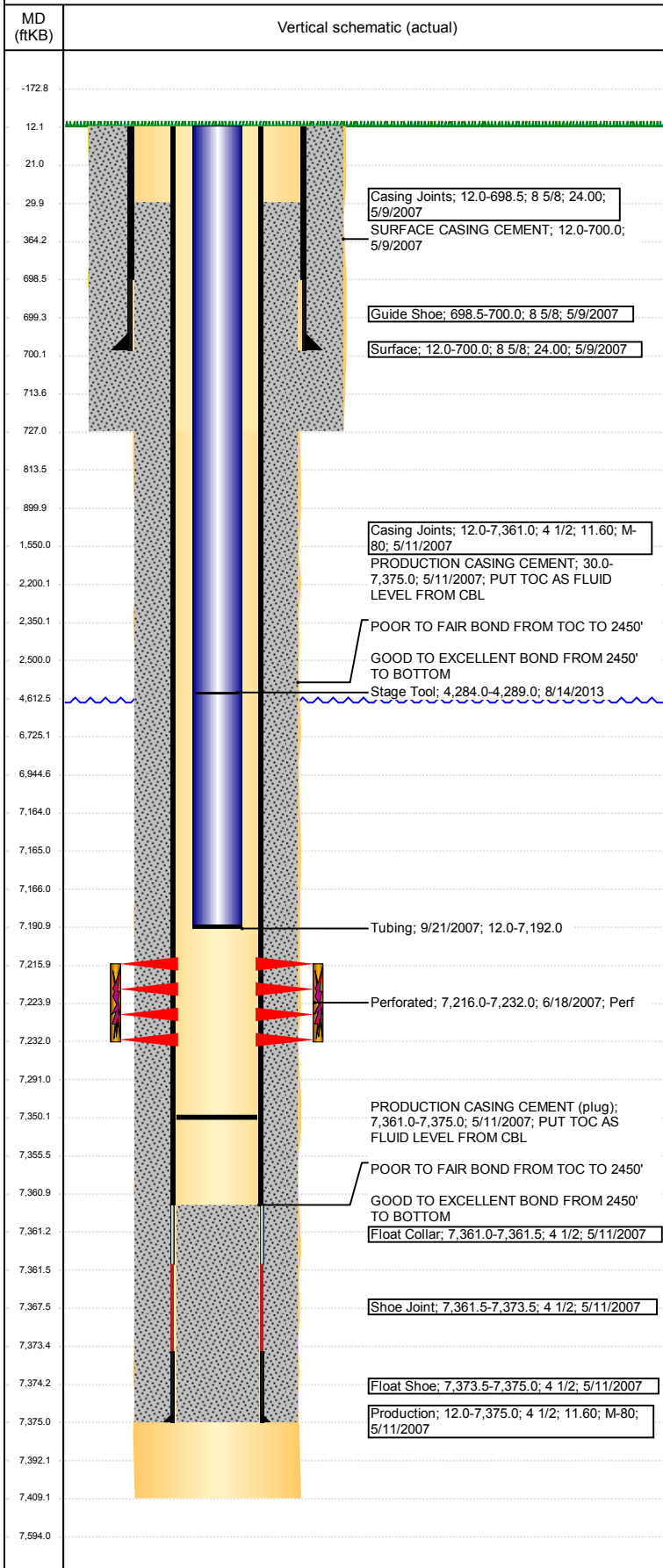
VERTICAL - ORIGINAL HOLE, 3/7/2018 12:12:55 PM



Well Header							
API 05-123-25080		Well Report Center 425778490			Well Configuration Type VERTICAL		
Original KB Elevation (ft) 4,797		KB - GL / MSL (ftKB) 12.00		Spud Date 5/8/2007		P & A Date	
Production Route A2-05			Well Production Status PR				SoRT Ignore No
Directions To Well				Actual Latitude (°) 40.48967000		Actual Longitude (°) -104.77107000	
Comment							
Congressional Location							
Quarter 3 SW	Quarter 4 NW	Section 15	Township 6	Twntshp N/S Dir N	Range 66	Range E/W Dir W	
Rig Operator							
Rig Operator							
Plug Back Total Depths							
Date	Depth (ftKB)	Method			Com		
9/21/2007	7,350.0	TAG			MOST RECENT C/O		
Wellbore Sections							
Section Des		Size (in)		Act Top, MD (ftKB)		Act Btm, MD (ftKB)	
SURFACE		12 1/4		12		727	
PRODUCTION		7 7/8		727		7,409	
Zone Statuses							
Zone Name		Status Date			Status		
CODELL		6/4/2015			PR		
Casing Strings							
Surface, 700.0ftKB							
Casing Description	Run Date	OD (in)	Wt/Len (l...	Grade	Top, MD (ft...	MD (ftKB)	
Surface	5/9/2007	8 5/8	24.00		12.0	700.0	
Production, 7,375.0ftKB							
Casing Description	Run Date	OD (in)	Wt/Len (l...	Grade	Top, MD (ft...	MD (ftKB)	
Production	5/11/2007	4 1/2	11.60	M-80	12.0	7,375.0	
Cement							
Des		Start Date		Top (ftKB)		Btm (ftKB)	
SURFACE CASING CEMENT		5/9/2007		12.0		700.0	
PRODUCTION CASING CEMENT		5/11/2007		30.0		7,375.0	
Proposed Cement							
Des				Top (ftKB)		Btm (ftKB)	
Cement Plug				6,725.0		7,164.0	
Cement Squeeze				2,200.0		2,500.0	
Shoe Plug				30.0		900.0	
Shoe Plug				12.0		30.0	
Tubing Strings							
Tubing Description	Run Date	String...	ID (in)	Wt (lb/ft)	Grade	Len (ft)	Set De...
Tubing	9/21/2007	2 3/8				7,180.00	
Tubing Components							
Item Des	OD (in)	Wt (lb/ft)	Grade	Jts	Len (ft)	Btm (ftKB)	Btm (TVD) (ftKB)
Tubing	2 3/8			233	7,178.50	7,190.5	
Seat Nipple	2 3/8			1	1.00	7,191.5	
Notched collar	2 3/8			1	0.50	7,192.0	
Other In Hole							
Run Date	Des			OD (in)	Top (ftKB)	Btm (ftKB)	
Proposed Other In Hole							
Des				OD (in)	Top (ftKB)	Btm (ftKB)	
Cast Iron Bridge Plug				4	7,164.0	7,166.0	
Logs							
Date	Type				Top, MD (ftKB)	Btm, MD (ftKB)	
5/11/2007	COMPENSATED DENSITY				4,090.0	7,380.0	
5/11/2007	INDUCTION				712.0	7,400.0	
6/15/2007	CBL/CCL/GR				12.0	7,348.0	

Well Name: BURBACH 15-23

VERTICAL - ORIGINAL HOLE, 3/7/2018 12:12:56 PM



Perforation Data

Linked Zone	Sum of Entered Shot Total	Top (ftKB)	Btm (ftKB)	Date
CODELL, ORIGINAL HOLE	64	7,216.00	7,232.00	6/18/2007
Total (Sum)	64			

Job Supply Amounts

Supply Item Des	Type	Uni...	Job Category	Total...	Total...	Total...
-----------------	------	--------	--------------	----------	----------	----------