

# Weld County, Colorado

## Section 06-T07N-R64W

### Almont 5-04-02L

#### plan1

#### Section Details

Sec	MD	Inc	Azi	TVD	+N/-S	+E/-W	Dleg	VSec	Annotation
1	0.00	0.00	0.00	0.00	0.00	0.00	0.00	0.00	
2	3000.00	0.00	0.00	3000.00	0.00	0.00	0.00	0.00	KOP Begin 1°/100' build
3	3418.64	4.19	115.28	3418.27	-6.53	13.82	1.00	13.85	Begin 4.19° tangent
4	6607.86	4.19	115.28	6598.98	-105.96	224.34	0.00	224.71	Begin 10°/100' build/turn
5	7470.17	90.00	89.51	7134.00	-118.14	796.18	10.00	796.59	Begin 90.00° lateral
6	17125.48	90.00	89.51	7134.00	-36.37	10451.15	0.00	10451.21	PBHL/TD 17125.48 MD/7134.00 TVD

#### DESIGN TARGET DETAILS

Name	TVD	+N/-S	+E/-W	Northing	Easting	Latitude	Longitude
Almont 5-04-02L LP 1375 FNL 470 FWL	7134.00	-118.14	796.18	14747461.35	1756651.75	40.60537046	-104.58122932
Almont 5-04-02L PBHL 1375 FNL 470 FEL	7134.00	-36.37	10451.15	14747588.74	1766306.20	40.60558890	-104.54644499

Almont 5-04-02L			
Surf loc: 1247 FNL 325 FEL Section 06-T08N-R64W			
NAD83 Colorado - HARN			
Universal Transverse Mercator (US Survey Feet)			
Zone 13N (108 W to 102 W)			
RKB=5001+24 @ 5025.00ft			
Northing	Easting	Latitude	Longitude
14747575.73	1755855.02	40.60569490	-104.58409776

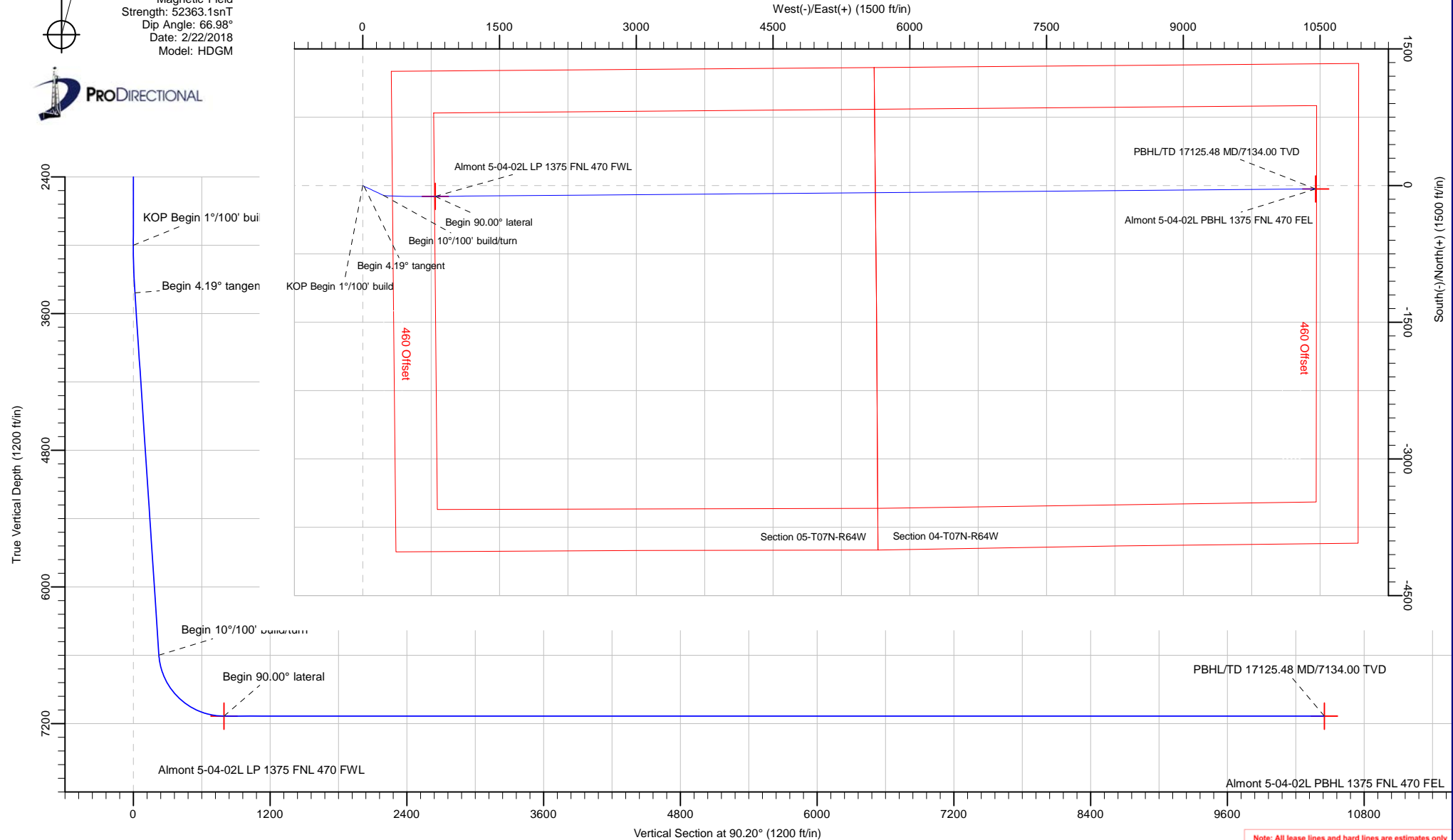


Azimuths to True North  
Magnetic North: 8.00°

Magnetic Field  
Strength: 52363.1snT  
Dip Angle: 66.98°  
Date: 2/22/2018  
Model: HDGM

#### Azimuth Corrections:

To convert a Magnetic Direction to a True Direction, Add 8.00° East



<b>Database:</b>	DB_Jul2216dt_v14	<b>Local Co-ordinate Reference:</b>	Well Almont 5-04-02L
<b>Company:</b>	Confluence Resources	<b>TVD Reference:</b>	RKB=5001+24 @ 5025.00ft
<b>Project:</b>	Weld County, Colorado	<b>MD Reference:</b>	RKB=5001+24 @ 5025.00ft
<b>Site:</b>	Section 06-T07N-R64W	<b>North Reference:</b>	True
<b>Well:</b>	Almont 5-04-02L	<b>Survey Calculation Method:</b>	Minimum Curvature
<b>Wellbore:</b>	Original Hole		
<b>Design:</b>	plan1		

<b>Project</b>	Weld County, Colorado		
<b>Map System:</b>	Universal Transverse Mercator (US Survey Feet)	<b>System Datum:</b>	Mean Sea Level
<b>Geo Datum:</b>	NAD83 Colorado - HARN		
<b>Map Zone:</b>	Zone 13N (108 W to 102 W)		

Site		Section 06-T07N-R64W			
Site Position:		Northing:	14,746,184.54 usft	Latitude:	40.60187654
From:	Map	Easting:	1,755,730.03 usft	Longitude:	-104.58457171
Position Uncertainty:	0.00 ft	Slot Radius:	13-3/16 "	Grid Convergence:	0.27 °

Well	Almont 5-04-02L, Surf loc: 1247 FNL 325 FEL Section 06-T08N-R64W					
Well Position	+N/-S	1,390.59 ft	Northing:	14,747,575.73 usft	Latitude:	40.60569489
	+E/-W	131.55 ft	Easting:	1,755,855.02 usft	Longitude:	-104.58409775
Position Uncertainty		0.00 ft	Wellhead Elevation:		Ground Level:	5,001.00 ft

<b>Wellbore</b>	Original Hole				
<b>Magnetics</b>	<b>Model Name</b>	<b>Sample Date</b>	<b>Declination (°)</b>	<b>Dip Angle (°)</b>	<b>Field Strength (nT)</b>
	HDGM	2/22/2018	8.00	66.98	52,363.10000000

<b>Design</b>	plan1			
<b>Audit Notes:</b>				
<b>Version:</b>	<b>Phase:</b>	PLAN	<b>Tie On Depth:</b>	0.00
<b>Vertical Section:</b>	<b>Depth From (TVD) (ft)</b>	<b>+N/-S (ft)</b>	<b>+E/-W (ft)</b>	<b>Direction (°)</b>
	0.00	0.00	0.00	90.20

<b>Plan Survey Tool Program</b>	<b>Date</b>	2/22/2018		
<b>Depth From (ft)</b>	<b>Depth To (ft)</b>	<b>Survey (Wellbore)</b>	<b>Tool Name</b>	<b>Remarks</b>
1	0.00	17,125.48	plan1 (Original Hole)	

<b>Plan Sections</b>										
<b>Measured Depth (ft)</b>	<b>Inclination (°)</b>	<b>Azimuth (°)</b>	<b>Vertical Depth (ft)</b>	<b>+N/-S (ft)</b>	<b>+E/-W (ft)</b>	<b>Dogleg Rate (°/100ft)</b>	<b>Build Rate (°/100ft)</b>	<b>Turn Rate (°/100ft)</b>	<b>TFO (°)</b>	<b>Target</b>
0.00	0.00	0.00	0.00	0.00	0.00	0.00	0.00	0.00	0.00	
3,000.00	0.00	0.00	3,000.00	0.00	0.00	0.00	0.00	0.00	0.00	
3,418.64	4.19	115.28	3,418.27	-6.53	13.82	1.00	1.00	0.00	115.28	
6,607.86	4.19	115.28	6,598.98	-105.96	224.34	0.00	0.00	0.00	0.00	
7,470.17	90.00	89.51	7,134.00	-118.14	796.18	10.00	9.95	-2.99	-25.83	Almont 5-04-02L LP 1
17,125.48	90.00	89.51	7,134.00	-36.37	10,451.15	0.00	0.00	0.00	0.00	Almont 5-04-02L PBH

<b>Database:</b>	DB_Jul2216dt_v14	<b>Local Co-ordinate Reference:</b>	Well Almost 5-04-02L
<b>Company:</b>	Confluence Resources	<b>TVD Reference:</b>	RKB=5001+24 @ 5025.00ft
<b>Project:</b>	Weld County, Colorado	<b>MD Reference:</b>	RKB=5001+24 @ 5025.00ft
<b>Site:</b>	Section 06-T07N-R64W	<b>North Reference:</b>	True
<b>Well:</b>	Almost 5-04-02L	<b>Survey Calculation Method:</b>	Minimum Curvature
<b>Wellbore:</b>	Original Hole		
<b>Design:</b>	plan1		

Planned Survey									
Measured Depth (ft)	Inclination (°)	Azimuth (°)	Vertical Depth (ft)	+N/-S (ft)	+E/-W (ft)	Vertical Section (ft)	Dogleg Rate (°/100ft)	Build Rate (°/100ft)	Turn Rate (°/100ft)
0.00	0.00	0.00	0.00	0.00	0.00	0.00	0.00	0.00	0.00
100.00	0.00	0.00	100.00	0.00	0.00	0.00	0.00	0.00	0.00
200.00	0.00	0.00	200.00	0.00	0.00	0.00	0.00	0.00	0.00
300.00	0.00	0.00	300.00	0.00	0.00	0.00	0.00	0.00	0.00
400.00	0.00	0.00	400.00	0.00	0.00	0.00	0.00	0.00	0.00
500.00	0.00	0.00	500.00	0.00	0.00	0.00	0.00	0.00	0.00
600.00	0.00	0.00	600.00	0.00	0.00	0.00	0.00	0.00	0.00
700.00	0.00	0.00	700.00	0.00	0.00	0.00	0.00	0.00	0.00
800.00	0.00	0.00	800.00	0.00	0.00	0.00	0.00	0.00	0.00
900.00	0.00	0.00	900.00	0.00	0.00	0.00	0.00	0.00	0.00
1,000.00	0.00	0.00	1,000.00	0.00	0.00	0.00	0.00	0.00	0.00
1,100.00	0.00	0.00	1,100.00	0.00	0.00	0.00	0.00	0.00	0.00
1,200.00	0.00	0.00	1,200.00	0.00	0.00	0.00	0.00	0.00	0.00
1,300.00	0.00	0.00	1,300.00	0.00	0.00	0.00	0.00	0.00	0.00
1,400.00	0.00	0.00	1,400.00	0.00	0.00	0.00	0.00	0.00	0.00
1,500.00	0.00	0.00	1,500.00	0.00	0.00	0.00	0.00	0.00	0.00
1,600.00	0.00	0.00	1,600.00	0.00	0.00	0.00	0.00	0.00	0.00
1,700.00	0.00	0.00	1,700.00	0.00	0.00	0.00	0.00	0.00	0.00
1,800.00	0.00	0.00	1,800.00	0.00	0.00	0.00	0.00	0.00	0.00
1,900.00	0.00	0.00	1,900.00	0.00	0.00	0.00	0.00	0.00	0.00
2,000.00	0.00	0.00	2,000.00	0.00	0.00	0.00	0.00	0.00	0.00
2,100.00	0.00	0.00	2,100.00	0.00	0.00	0.00	0.00	0.00	0.00
2,200.00	0.00	0.00	2,200.00	0.00	0.00	0.00	0.00	0.00	0.00
2,300.00	0.00	0.00	2,300.00	0.00	0.00	0.00	0.00	0.00	0.00
2,400.00	0.00	0.00	2,400.00	0.00	0.00	0.00	0.00	0.00	0.00
2,500.00	0.00	0.00	2,500.00	0.00	0.00	0.00	0.00	0.00	0.00
2,600.00	0.00	0.00	2,600.00	0.00	0.00	0.00	0.00	0.00	0.00
2,700.00	0.00	0.00	2,700.00	0.00	0.00	0.00	0.00	0.00	0.00
2,800.00	0.00	0.00	2,800.00	0.00	0.00	0.00	0.00	0.00	0.00
2,900.00	0.00	0.00	2,900.00	0.00	0.00	0.00	0.00	0.00	0.00
3,000.00	0.00	0.00	3,000.00	0.00	0.00	0.00	0.00	0.00	0.00
<b>KOP Begin 1°/100' build</b>									
3,100.00	1.00	115.28	3,099.99	-0.37	0.79	0.79	1.00	1.00	0.00
3,200.00	2.00	115.28	3,199.96	-1.49	3.16	3.16	1.00	1.00	0.00
3,300.00	3.00	115.28	3,299.86	-3.35	7.10	7.11	1.00	1.00	0.00
3,400.00	4.00	115.28	3,399.68	-5.96	12.62	12.64	1.00	1.00	0.00
3,418.64	4.19	115.28	3,418.27	-6.53	13.82	13.85	1.00	1.00	0.00
<b>Begin 4.19° tangent</b>									
3,500.00	4.19	115.28	3,499.41	-9.07	19.19	19.23	0.00	0.00	0.00
3,600.00	4.19	115.28	3,599.14	-12.18	25.79	25.84	0.00	0.00	0.00
3,700.00	4.19	115.28	3,698.88	-15.30	32.40	32.45	0.00	0.00	0.00
3,800.00	4.19	115.28	3,798.61	-18.42	39.00	39.06	0.00	0.00	0.00
3,900.00	4.19	115.28	3,898.34	-21.54	45.60	45.67	0.00	0.00	0.00
4,000.00	4.19	115.28	3,998.08	-24.65	52.20	52.28	0.00	0.00	0.00
4,100.00	4.19	115.28	4,097.81	-27.77	58.80	58.90	0.00	0.00	0.00
4,200.00	4.19	115.28	4,197.54	-30.89	65.40	65.51	0.00	0.00	0.00
4,300.00	4.19	115.28	4,297.28	-34.01	72.00	72.12	0.00	0.00	0.00
4,400.00	4.19	115.28	4,397.01	-37.13	78.60	78.73	0.00	0.00	0.00
4,500.00	4.19	115.28	4,496.74	-40.24	85.20	85.34	0.00	0.00	0.00
4,600.00	4.19	115.28	4,596.48	-43.36	91.80	91.95	0.00	0.00	0.00
4,700.00	4.19	115.28	4,696.21	-46.48	98.40	98.57	0.00	0.00	0.00
4,800.00	4.19	115.28	4,795.94	-49.60	105.01	105.18	0.00	0.00	0.00
4,900.00	4.19	115.28	4,895.68	-52.71	111.61	111.79	0.00	0.00	0.00

<b>Database:</b>	DB_Jul2216dt_v14	<b>Local Co-ordinate Reference:</b>	Well Almont 5-04-02L
<b>Company:</b>	Confluence Resources	<b>TVD Reference:</b>	RKB=5001+24 @ 5025.00ft
<b>Project:</b>	Weld County, Colorado	<b>MD Reference:</b>	RKB=5001+24 @ 5025.00ft
<b>Site:</b>	Section 06-T07N-R64W	<b>North Reference:</b>	True
<b>Well:</b>	Almont 5-04-02L	<b>Survey Calculation Method:</b>	Minimum Curvature
<b>Wellbore:</b>	Original Hole		
<b>Design:</b>	plan1		

Planned Survey									
Measured Depth (ft)	Inclination (°)	Azimuth (°)	Vertical Depth (ft)	+N/-S (ft)	+E/-W (ft)	Vertical Section (ft)	Dogleg Rate (°/100ft)	Build Rate (°/100ft)	Turn Rate (°/100ft)
5,000.00	4.19	115.28	4,995.41	-55.83	118.21	118.40	0.00	0.00	0.00
5,100.00	4.19	115.28	5,095.14	-58.95	124.81	125.01	0.00	0.00	0.00
5,200.00	4.19	115.28	5,194.87	-62.07	131.41	131.62	0.00	0.00	0.00
5,300.00	4.19	115.28	5,294.61	-65.19	138.01	138.24	0.00	0.00	0.00
5,400.00	4.19	115.28	5,394.34	-68.30	144.61	144.85	0.00	0.00	0.00
5,500.00	4.19	115.28	5,494.07	-71.42	151.21	151.46	0.00	0.00	0.00
5,600.00	4.19	115.28	5,593.81	-74.54	157.81	158.07	0.00	0.00	0.00
5,700.00	4.19	115.28	5,693.54	-77.66	164.41	164.68	0.00	0.00	0.00
5,800.00	4.19	115.28	5,793.27	-80.77	171.01	171.29	0.00	0.00	0.00
5,900.00	4.19	115.28	5,893.01	-83.89	177.62	177.91	0.00	0.00	0.00
6,000.00	4.19	115.28	5,992.74	-87.01	184.22	184.52	0.00	0.00	0.00
6,100.00	4.19	115.28	6,092.47	-90.13	190.82	191.13	0.00	0.00	0.00
6,200.00	4.19	115.28	6,192.21	-93.25	197.42	197.74	0.00	0.00	0.00
6,300.00	4.19	115.28	6,291.94	-96.36	204.02	204.35	0.00	0.00	0.00
6,400.00	4.19	115.28	6,391.67	-99.48	210.62	210.96	0.00	0.00	0.00
6,500.00	4.19	115.28	6,491.41	-102.60	217.22	217.58	0.00	0.00	0.00
6,600.00	4.19	115.28	6,591.14	-105.72	223.82	224.19	0.00	0.00	0.00
6,607.86	4.19	115.28	6,598.98	-105.96	224.34	224.71	0.00	0.00	0.00
Begin 10°/100' build/turn									
6,700.00	13.11	97.37	6,689.99	-108.74	237.77	238.15	10.00	9.68	-19.44
6,800.00	23.05	93.80	6,784.94	-111.50	268.63	269.02	10.00	9.94	-3.57
6,900.00	33.03	92.32	6,873.09	-113.91	315.52	315.91	10.00	9.98	-1.48
7,000.00	43.01	91.47	6,951.77	-115.89	377.00	377.40	10.00	9.99	-0.85
7,100.00	53.01	90.89	7,018.58	-117.39	451.22	451.62	10.00	9.99	-0.58
7,200.00	63.00	90.44	7,071.51	-118.36	535.91	536.32	10.00	9.99	-0.44
7,300.00	72.99	90.07	7,108.93	-118.77	628.50	628.91	10.00	9.99	-0.37
7,400.00	82.99	89.74	7,129.71	-118.60	726.19	726.60	10.00	9.99	-0.33
7,470.17	90.00	89.51	7,134.00	-118.14	796.18	796.59	10.00	9.99	-0.32
Begin 90.00° lateral									
7,500.00	90.00	89.51	7,134.00	-117.89	826.01	826.42	0.00	0.00	0.00
7,600.00	90.00	89.51	7,134.00	-117.04	926.01	926.41	0.00	0.00	0.00
7,700.00	90.00	89.51	7,134.00	-116.20	1,026.01	1,026.40	0.00	0.00	0.00
7,800.00	90.00	89.51	7,134.00	-115.35	1,126.00	1,126.40	0.00	0.00	0.00
7,900.00	90.00	89.51	7,134.00	-114.50	1,226.00	1,226.39	0.00	0.00	0.00
8,000.00	90.00	89.51	7,134.00	-113.66	1,326.00	1,326.38	0.00	0.00	0.00
8,100.00	90.00	89.51	7,134.00	-112.81	1,425.99	1,426.38	0.00	0.00	0.00
8,200.00	90.00	89.51	7,134.00	-111.96	1,525.99	1,526.37	0.00	0.00	0.00
8,300.00	90.00	89.51	7,134.00	-111.12	1,625.99	1,626.36	0.00	0.00	0.00
8,400.00	90.00	89.51	7,134.00	-110.27	1,725.98	1,726.35	0.00	0.00	0.00
8,500.00	90.00	89.51	7,134.00	-109.42	1,825.98	1,826.35	0.00	0.00	0.00
8,600.00	90.00	89.51	7,134.00	-108.57	1,925.97	1,926.34	0.00	0.00	0.00
8,700.00	90.00	89.51	7,134.00	-107.73	2,025.97	2,026.33	0.00	0.00	0.00
8,800.00	90.00	89.51	7,134.00	-106.88	2,125.97	2,126.33	0.00	0.00	0.00
8,900.00	90.00	89.51	7,134.00	-106.03	2,225.96	2,226.32	0.00	0.00	0.00
9,000.00	90.00	89.51	7,134.00	-105.19	2,325.96	2,326.31	0.00	0.00	0.00
9,100.00	90.00	89.51	7,134.00	-104.34	2,425.96	2,426.30	0.00	0.00	0.00
9,200.00	90.00	89.51	7,134.00	-103.49	2,525.95	2,526.30	0.00	0.00	0.00
9,300.00	90.00	89.51	7,134.00	-102.65	2,625.95	2,626.29	0.00	0.00	0.00
9,400.00	90.00	89.51	7,134.00	-101.80	2,725.95	2,726.28	0.00	0.00	0.00
9,500.00	90.00	89.51	7,134.00	-100.95	2,825.94	2,826.28	0.00	0.00	0.00
9,600.00	90.00	89.51	7,134.00	-100.11	2,925.94	2,926.27	0.00	0.00	0.00
9,700.00	90.00	89.51	7,134.00	-99.26	3,025.93	3,026.26	0.00	0.00	0.00
9,800.00	90.00	89.51	7,134.00	-98.41	3,125.93	3,126.25	0.00	0.00	0.00
9,900.00	90.00	89.51	7,134.00	-97.56	3,225.93	3,226.25	0.00	0.00	0.00

<b>Database:</b>	DB_Jul2216dt_v14	<b>Local Co-ordinate Reference:</b>	Well Almost 5-04-02L
<b>Company:</b>	Confluence Resources	<b>TVD Reference:</b>	RKB=5001+24 @ 5025.00ft
<b>Project:</b>	Weld County, Colorado	<b>MD Reference:</b>	RKB=5001+24 @ 5025.00ft
<b>Site:</b>	Section 06-T07N-R64W	<b>North Reference:</b>	True
<b>Well:</b>	Almost 5-04-02L	<b>Survey Calculation Method:</b>	Minimum Curvature
<b>Wellbore:</b>	Original Hole		
<b>Design:</b>	plan1		

Planned Survey									
Measured Depth (ft)	Inclination (°)	Azimuth (°)	Vertical Depth (ft)	+N/-S (ft)	+E/-W (ft)	Vertical Section (ft)	Dogleg Rate (°/100ft)	Build Rate (°/100ft)	Turn Rate (°/100ft)
10,000.00	90.00	89.51	7,134.00	-96.72	3,325.92	3,326.24	0.00	0.00	0.00
10,100.00	90.00	89.51	7,134.00	-95.87	3,425.92	3,426.23	0.00	0.00	0.00
10,200.00	90.00	89.51	7,134.00	-95.02	3,525.92	3,526.23	0.00	0.00	0.00
10,300.00	90.00	89.51	7,134.00	-94.18	3,625.91	3,626.22	0.00	0.00	0.00
10,400.00	90.00	89.51	7,134.00	-93.33	3,725.91	3,726.21	0.00	0.00	0.00
10,500.00	90.00	89.51	7,134.00	-92.48	3,825.91	3,826.20	0.00	0.00	0.00
10,600.00	90.00	89.51	7,134.00	-91.64	3,925.90	3,926.20	0.00	0.00	0.00
10,700.00	90.00	89.51	7,134.00	-90.79	4,025.90	4,026.19	0.00	0.00	0.00
10,800.00	90.00	89.51	7,134.00	-89.94	4,125.90	4,126.18	0.00	0.00	0.00
10,900.00	90.00	89.51	7,134.00	-89.09	4,225.89	4,226.18	0.00	0.00	0.00
11,000.00	90.00	89.51	7,134.00	-88.25	4,325.89	4,326.17	0.00	0.00	0.00
11,100.00	90.00	89.51	7,134.00	-87.40	4,425.88	4,426.16	0.00	0.00	0.00
11,200.00	90.00	89.51	7,134.00	-86.55	4,525.88	4,526.15	0.00	0.00	0.00
11,300.00	90.00	89.51	7,134.00	-85.71	4,625.88	4,626.15	0.00	0.00	0.00
11,400.00	90.00	89.51	7,134.00	-84.86	4,725.87	4,726.14	0.00	0.00	0.00
11,500.00	90.00	89.51	7,134.00	-84.01	4,825.87	4,826.13	0.00	0.00	0.00
11,600.00	90.00	89.51	7,134.00	-83.17	4,925.87	4,926.13	0.00	0.00	0.00
11,700.00	90.00	89.51	7,134.00	-82.32	5,025.86	5,026.12	0.00	0.00	0.00
11,800.00	90.00	89.51	7,134.00	-81.47	5,125.86	5,126.11	0.00	0.00	0.00
11,900.00	90.00	89.51	7,134.00	-80.63	5,225.86	5,226.10	0.00	0.00	0.00
12,000.00	90.00	89.51	7,134.00	-79.78	5,325.85	5,326.10	0.00	0.00	0.00
12,100.00	90.00	89.51	7,134.00	-78.93	5,425.85	5,426.09	0.00	0.00	0.00
12,200.00	90.00	89.51	7,134.00	-78.08	5,525.85	5,526.08	0.00	0.00	0.00
12,300.00	90.00	89.51	7,134.00	-77.24	5,625.84	5,626.08	0.00	0.00	0.00
12,400.00	90.00	89.51	7,134.00	-76.39	5,725.84	5,726.07	0.00	0.00	0.00
12,500.00	90.00	89.51	7,134.00	-75.54	5,825.83	5,826.06	0.00	0.00	0.00
12,600.00	90.00	89.51	7,134.00	-74.70	5,925.83	5,926.05	0.00	0.00	0.00
12,700.00	90.00	89.51	7,134.00	-73.85	6,025.83	6,026.05	0.00	0.00	0.00
12,800.00	90.00	89.51	7,134.00	-73.00	6,125.82	6,126.04	0.00	0.00	0.00
12,900.00	90.00	89.51	7,134.00	-72.16	6,225.82	6,226.03	0.00	0.00	0.00
13,000.00	90.00	89.51	7,134.00	-71.31	6,325.82	6,326.03	0.00	0.00	0.00
13,100.00	90.00	89.51	7,134.00	-70.46	6,425.81	6,426.02	0.00	0.00	0.00
13,200.00	90.00	89.51	7,134.00	-69.62	6,525.81	6,526.01	0.00	0.00	0.00
13,300.00	90.00	89.51	7,134.00	-68.77	6,625.81	6,626.00	0.00	0.00	0.00
13,400.00	90.00	89.51	7,134.00	-67.92	6,725.80	6,726.00	0.00	0.00	0.00
13,500.00	90.00	89.51	7,134.00	-67.07	6,825.80	6,825.99	0.00	0.00	0.00
13,600.00	90.00	89.51	7,134.00	-66.23	6,925.80	6,925.98	0.00	0.00	0.00
13,700.00	90.00	89.51	7,134.00	-65.38	7,025.79	7,025.98	0.00	0.00	0.00
13,800.00	90.00	89.51	7,134.00	-64.53	7,125.79	7,125.97	0.00	0.00	0.00
13,900.00	90.00	89.51	7,134.00	-63.69	7,225.78	7,225.96	0.00	0.00	0.00
14,000.00	90.00	89.51	7,134.00	-62.84	7,325.78	7,325.96	0.00	0.00	0.00
14,100.00	90.00	89.51	7,134.00	-61.99	7,425.78	7,425.95	0.00	0.00	0.00
14,200.00	90.00	89.51	7,134.00	-61.15	7,525.77	7,525.94	0.00	0.00	0.00
14,300.00	90.00	89.51	7,134.00	-60.30	7,625.77	7,625.93	0.00	0.00	0.00
14,400.00	90.00	89.51	7,134.00	-59.45	7,725.77	7,725.93	0.00	0.00	0.00
14,500.00	90.00	89.51	7,134.00	-58.61	7,825.76	7,825.92	0.00	0.00	0.00
14,600.00	90.00	89.51	7,134.00	-57.76	7,925.76	7,925.91	0.00	0.00	0.00
14,700.00	90.00	89.51	7,134.00	-56.91	8,025.76	8,025.91	0.00	0.00	0.00
14,800.00	90.00	89.51	7,134.00	-56.06	8,125.75	8,125.90	0.00	0.00	0.00
14,900.00	90.00	89.51	7,134.00	-55.22	8,225.75	8,225.89	0.00	0.00	0.00
15,000.00	90.00	89.51	7,134.00	-54.37	8,325.74	8,325.88	0.00	0.00	0.00
15,100.00	90.00	89.51	7,134.00	-53.52	8,425.74	8,425.88	0.00	0.00	0.00
15,200.00	90.00	89.51	7,134.00	-52.68	8,525.74	8,525.87	0.00	0.00	0.00
15,300.00	90.00	89.51	7,134.00	-51.83	8,625.73	8,625.86	0.00	0.00	0.00

<b>Database:</b>	DB_Jul2216dt_v14	<b>Local Co-ordinate Reference:</b>	Well Almont 5-04-02L
<b>Company:</b>	Confluence Resources	<b>TVD Reference:</b>	RKB=5001+24 @ 5025.00ft
<b>Project:</b>	Weld County, Colorado	<b>MD Reference:</b>	RKB=5001+24 @ 5025.00ft
<b>Site:</b>	Section 06-T07N-R64W	<b>North Reference:</b>	True
<b>Well:</b>	Almont 5-04-02L	<b>Survey Calculation Method:</b>	Minimum Curvature
<b>Wellbore:</b>	Original Hole		
<b>Design:</b>	plan1		

Planned Survey									
Measured Depth (ft)	Inclination (°)	Azimuth (°)	Vertical Depth (ft)	+N/-S (ft)	+E/-W (ft)	Vertical Section (ft)	Dogleg Rate (°/100ft)	Build Rate (°/100ft)	Turn Rate (°/100ft)
15,400.00	90.00	89.51	7,134.00	-50.98	8,725.73	8,725.86	0.00	0.00	0.00
15,500.00	90.00	89.51	7,134.00	-50.14	8,825.73	8,825.85	0.00	0.00	0.00
15,600.00	90.00	89.51	7,134.00	-49.29	8,925.72	8,925.84	0.00	0.00	0.00
15,700.00	90.00	89.51	7,134.00	-48.44	9,025.72	9,025.83	0.00	0.00	0.00
15,800.00	90.00	89.51	7,134.00	-47.60	9,125.72	9,125.83	0.00	0.00	0.00
15,900.00	90.00	89.51	7,134.00	-46.75	9,225.71	9,225.82	0.00	0.00	0.00
16,000.00	90.00	89.51	7,134.00	-45.90	9,325.71	9,325.81	0.00	0.00	0.00
16,100.00	90.00	89.51	7,134.00	-45.05	9,425.71	9,425.81	0.00	0.00	0.00
16,200.00	90.00	89.51	7,134.00	-44.21	9,525.70	9,525.80	0.00	0.00	0.00
16,300.00	90.00	89.51	7,134.00	-43.36	9,625.70	9,625.79	0.00	0.00	0.00
16,400.00	90.00	89.51	7,134.00	-42.51	9,725.69	9,725.78	0.00	0.00	0.00
16,500.00	90.00	89.51	7,134.00	-41.67	9,825.69	9,825.78	0.00	0.00	0.00
16,600.00	90.00	89.51	7,134.00	-40.82	9,925.69	9,925.77	0.00	0.00	0.00
16,700.00	90.00	89.51	7,134.00	-39.97	10,025.68	10,025.76	0.00	0.00	0.00
16,800.00	90.00	89.51	7,134.00	-39.13	10,125.68	10,125.76	0.00	0.00	0.00
16,900.00	90.00	89.51	7,134.00	-38.28	10,225.68	10,225.75	0.00	0.00	0.00
17,000.00	90.00	89.51	7,134.00	-37.43	10,325.67	10,325.74	0.00	0.00	0.00
17,100.00	90.00	89.51	7,134.00	-36.59	10,425.67	10,425.73	0.00	0.00	0.00
17,125.48	90.00	89.51	7,134.00	-36.37	10,451.15	10,451.21	0.00	0.00	0.00
PBHL/TD 17125.48 MD/7134.00 TVD									

Design Targets									
Target Name - hit/miss target - Shape	Dip Angle (°)	Dip Dir. (°)	TVD (ft)	+N/-S (ft)	+E/-W (ft)	Northing (usft)	Easting (usft)	Latitude	Longitude
Almont 5-04-02L PBHL 1 - plan hits target center - Point	0.00	0.00	7,134.00	-36.37	10,451.15	14,747,588.74	1,766,306.20	40.60558890	-104.54644499
Almont 5-04-02L LP 137 - plan hits target center - Point	0.00	0.00	7,134.00	-118.14	796.18	14,747,461.35	1,756,651.75	40.60537045	-104.58122932

Plan Annotations				
Measured Depth (ft)	Vertical Depth (ft)	Local Coordinates		Comment
		+N/-S (ft)	+E/-W (ft)	
3,000.00	3,000.00	0.00	0.00	KOP Begin 1°/100' build
3,418.64	3,418.27	-6.53	13.82	Begin 4.19° tangent
6,607.86	6,598.98	-105.96	224.34	Begin 10°/100' build/turn
7,470.17	7,134.00	-118.14	796.18	Begin 90.00° lateral
17,125.48	7,134.00	-36.37	10,451.15	PBHL/TD 17125.48 MD/7134.00 TVD

<b>Database:</b>	DB_Jul2216dt_v14	<b>Local Co-ordinate Reference:</b>	Well Almont 5-04-02L
<b>Company:</b>	Confluence Resources	<b>TVD Reference:</b>	RKB=5001+24 @ 5025.00ft
<b>Project:</b>	Weld County, Colorado	<b>MD Reference:</b>	RKB=5001+24 @ 5025.00ft
<b>Site:</b>	Section 06-T07N-R64W	<b>North Reference:</b>	True
<b>Well:</b>	Almont 5-04-02L	<b>Survey Calculation Method:</b>	Minimum Curvature
<b>Wellbore:</b>	Original Hole		
<b>Design:</b>	plan1		

<b>Project</b>	Weld County, Colorado		
<b>Map System:</b>	Universal Transverse Mercator (US Survey Feet)	<b>System Datum:</b>	Mean Sea Level
<b>Geo Datum:</b>	NAD83 Colorado - HARN		
<b>Map Zone:</b>	Zone 13N (108 W to 102 W)		

Site		Section 06-T07N-R64W			
Site Position:		Northing:	14,746,184.54 usft	Latitude:	40.60187654
From:	Map	Easting:	1,755,730.03 usft	Longitude:	-104.58457171
Position Uncertainty:	0.00 ft	Slot Radius:	13-3/16 "	Grid Convergence:	0.27 °

Well	Almont 5-04-02L, Surf loc: 1247 FNL 325 FEL Section 06-T08N-R64W					
Well Position	+N/-S	0.00 ft	Northing:	14,747,575.73 usft	Latitude:	40.60569489
	+E/-W	0.00 ft	Easting:	1,755,855.02 usft	Longitude:	-104.58409775
Position Uncertainty		0.00 ft	Wellhead Elevation:		Ground Level:	5,001.00 ft

<b>Wellbore</b>	Original Hole				
<b>Magnetics</b>	<b>Model Name</b>	<b>Sample Date</b>	<b>Declination (°)</b>	<b>Dip Angle (°)</b>	<b>Field Strength (nT)</b>
	HDGM	2/22/2018	8.00	66.98	52,363.10000000

<b>Design</b>	plan1			
<b>Audit Notes:</b>				
<b>Version:</b>	<b>Phase:</b>	PLAN	<b>Tie On Depth:</b>	0.00
<b>Vertical Section:</b>	<b>Depth From (TVD) (ft)</b>	<b>+N/-S (ft)</b>	<b>+E/-W (ft)</b>	<b>Direction (°)</b>
	0.00	0.00	0.00	90.20

<b>Plan Survey Tool Program</b>	<b>Date</b>	2/22/2018		
<b>Depth From (ft)</b>	<b>Depth To (ft)</b>	<b>Survey (Wellbore)</b>	<b>Tool Name</b>	<b>Remarks</b>
1	0.00	17,125.48 plan1 (Original Hole)		

<b>Plan Sections</b>										
<b>Measured Depth (ft)</b>	<b>Inclination (°)</b>	<b>Azimuth (°)</b>	<b>Vertical Depth (ft)</b>	<b>+N/-S (ft)</b>	<b>+E/-W (ft)</b>	<b>Dogleg Rate (°/100ft)</b>	<b>Build Rate (°/100ft)</b>	<b>Turn Rate (°/100ft)</b>	<b>TFO (°)</b>	<b>Target</b>
0.00	0.00	0.00	0.00	0.00	0.00	0.00	0.00	0.00	0.00	
3,000.00	0.00	0.00	3,000.00	0.00	0.00	0.00	0.00	0.00	0.00	
3,418.64	4.19	115.28	3,418.27	-6.53	13.82	1.00	1.00	0.00	115.28	
6,607.86	4.19	115.28	6,598.98	-105.96	224.34	0.00	0.00	0.00	0.00	
7,470.17	90.00	89.51	7,134.00	-118.14	796.18	10.00	9.95	-2.99	-25.83	Almont 5-04-02L LP 1
17,125.48	90.00	89.51	7,134.00	-36.37	10,451.15	0.00	0.00	0.00	0.00	Almont 5-04-02L PBH



<b>Database:</b>	DB_Jul2216dt_v14	<b>Local Co-ordinate Reference:</b>	Well Almont 5-04-02L
<b>Company:</b>	Confluence Resources	<b>TVD Reference:</b>	RKB=5001+24 @ 5025.00ft
<b>Project:</b>	Weld County, Colorado	<b>MD Reference:</b>	RKB=5001+24 @ 5025.00ft
<b>Site:</b>	Section 06-T07N-R64W	<b>North Reference:</b>	True
<b>Well:</b>	Almont 5-04-02L	<b>Survey Calculation Method:</b>	Minimum Curvature
<b>Wellbore:</b>	Original Hole		
<b>Design:</b>	plan1		

Planned Survey									
Measured Depth (ft)	Inclination (°)	Azimuth (°)	Vertical Depth (ft)	+N/-S (ft)	+E/-W (ft)	Map Northing (usft)	Map Easting (usft)	Latitude	Longitude
0.00	0.00	0.00	0.00	0.00	0.00	14,747,575.73	1,755,855.02	40.60569489	-104.58409775
100.00	0.00	0.00	100.00	0.00	0.00	14,747,575.73	1,755,855.02	40.60569489	-104.58409775
200.00	0.00	0.00	200.00	0.00	0.00	14,747,575.73	1,755,855.02	40.60569489	-104.58409775
300.00	0.00	0.00	300.00	0.00	0.00	14,747,575.73	1,755,855.02	40.60569489	-104.58409775
400.00	0.00	0.00	400.00	0.00	0.00	14,747,575.73	1,755,855.02	40.60569489	-104.58409775
500.00	0.00	0.00	500.00	0.00	0.00	14,747,575.73	1,755,855.02	40.60569489	-104.58409775
600.00	0.00	0.00	600.00	0.00	0.00	14,747,575.73	1,755,855.02	40.60569489	-104.58409775
700.00	0.00	0.00	700.00	0.00	0.00	14,747,575.73	1,755,855.02	40.60569489	-104.58409775
800.00	0.00	0.00	800.00	0.00	0.00	14,747,575.73	1,755,855.02	40.60569489	-104.58409775
900.00	0.00	0.00	900.00	0.00	0.00	14,747,575.73	1,755,855.02	40.60569489	-104.58409775
1,000.00	0.00	0.00	1,000.00	0.00	0.00	14,747,575.73	1,755,855.02	40.60569489	-104.58409775
1,100.00	0.00	0.00	1,100.00	0.00	0.00	14,747,575.73	1,755,855.02	40.60569489	-104.58409775
1,200.00	0.00	0.00	1,200.00	0.00	0.00	14,747,575.73	1,755,855.02	40.60569489	-104.58409775
1,300.00	0.00	0.00	1,300.00	0.00	0.00	14,747,575.73	1,755,855.02	40.60569489	-104.58409775
1,400.00	0.00	0.00	1,400.00	0.00	0.00	14,747,575.73	1,755,855.02	40.60569489	-104.58409775
1,500.00	0.00	0.00	1,500.00	0.00	0.00	14,747,575.73	1,755,855.02	40.60569489	-104.58409775
1,600.00	0.00	0.00	1,600.00	0.00	0.00	14,747,575.73	1,755,855.02	40.60569489	-104.58409775
1,700.00	0.00	0.00	1,700.00	0.00	0.00	14,747,575.73	1,755,855.02	40.60569489	-104.58409775
1,800.00	0.00	0.00	1,800.00	0.00	0.00	14,747,575.73	1,755,855.02	40.60569489	-104.58409775
1,900.00	0.00	0.00	1,900.00	0.00	0.00	14,747,575.73	1,755,855.02	40.60569489	-104.58409775
2,000.00	0.00	0.00	2,000.00	0.00	0.00	14,747,575.73	1,755,855.02	40.60569489	-104.58409775
2,100.00	0.00	0.00	2,100.00	0.00	0.00	14,747,575.73	1,755,855.02	40.60569489	-104.58409775
2,200.00	0.00	0.00	2,200.00	0.00	0.00	14,747,575.73	1,755,855.02	40.60569489	-104.58409775
2,300.00	0.00	0.00	2,300.00	0.00	0.00	14,747,575.73	1,755,855.02	40.60569489	-104.58409775
2,400.00	0.00	0.00	2,400.00	0.00	0.00	14,747,575.73	1,755,855.02	40.60569489	-104.58409775
2,500.00	0.00	0.00	2,500.00	0.00	0.00	14,747,575.73	1,755,855.02	40.60569489	-104.58409775
2,600.00	0.00	0.00	2,600.00	0.00	0.00	14,747,575.73	1,755,855.02	40.60569489	-104.58409775
2,700.00	0.00	0.00	2,700.00	0.00	0.00	14,747,575.73	1,755,855.02	40.60569489	-104.58409775
2,800.00	0.00	0.00	2,800.00	0.00	0.00	14,747,575.73	1,755,855.02	40.60569489	-104.58409775
2,900.00	0.00	0.00	2,900.00	0.00	0.00	14,747,575.73	1,755,855.02	40.60569489	-104.58409775
3,000.00	0.00	0.00	3,000.00	0.00	0.00	14,747,575.73	1,755,855.02	40.60569489	-104.58409775
<b>KOP Begin 1°/100' build</b>									
3,100.00	1.00	115.28	3,099.99	-0.37	0.79	14,747,575.36	1,755,855.81	40.60569387	-104.58409491
3,200.00	2.00	115.28	3,199.96	-1.49	3.16	14,747,574.25	1,755,858.18	40.60569080	-104.58408638
3,300.00	3.00	115.28	3,299.86	-3.35	7.10	14,747,572.41	1,755,862.14	40.60568568	-104.58407217
3,400.00	4.00	115.28	3,399.68	-5.96	12.62	14,747,569.83	1,755,867.67	40.60567853	-104.58405229
3,418.64	4.19	115.28	3,418.27	-6.53	13.82	14,747,569.27	1,755,868.87	40.60567696	-104.58404795
<b>Begin 4.19° tangent</b>									
3,500.00	4.19	115.28	3,499.41	-9.07	19.19	14,747,566.75	1,755,874.26	40.60567000	-104.58402860
3,600.00	4.19	115.28	3,599.14	-12.18	25.79	14,747,563.67	1,755,880.87	40.60566144	-104.58400482
3,700.00	4.19	115.28	3,698.88	-15.30	32.40	14,747,560.58	1,755,887.49	40.60565288	-104.58398104
3,800.00	4.19	115.28	3,798.61	-18.42	39.00	14,747,557.50	1,755,894.10	40.60564432	-104.58395726
3,900.00	4.19	115.28	3,898.34	-21.54	45.60	14,747,554.41	1,755,900.72	40.60563576	-104.58393348
4,000.00	4.19	115.28	3,998.08	-24.65	52.20	14,747,551.32	1,755,907.33	40.60562720	-104.58390970
4,100.00	4.19	115.28	4,097.81	-27.77	58.80	14,747,548.24	1,755,913.95	40.60561863	-104.58388591
4,200.00	4.19	115.28	4,197.54	-30.89	65.40	14,747,545.15	1,755,920.56	40.60561007	-104.58386213
4,300.00	4.19	115.28	4,297.28	-34.01	72.00	14,747,542.06	1,755,927.18	40.60560151	-104.58383835
4,400.00	4.19	115.28	4,397.01	-37.13	78.60	14,747,538.98	1,755,933.80	40.60559295	-104.58381457
4,500.00	4.19	115.28	4,496.74	-40.24	85.20	14,747,535.89	1,755,940.41	40.60558439	-104.58379079
4,600.00	4.19	115.28	4,596.48	-43.36	91.80	14,747,532.80	1,755,947.03	40.60557583	-104.58376701
4,700.00	4.19	115.28	4,696.21	-46.48	98.40	14,747,529.72	1,755,953.64	40.60556727	-104.58374323
4,800.00	4.19	115.28	4,795.94	-49.60	105.01	14,747,526.63	1,755,960.26	40.60555871	-104.58371945
4,900.00	4.19	115.28	4,895.68	-52.71	111.61	14,747,523.54	1,755,966.87	40.60555015	-104.58369566
5,000.00	4.19	115.28	4,995.41	-55.83	118.21	14,747,520.46	1,755,973.49	40.60554159	-104.58367188



<b>Database:</b>	DB_Jul2216dt_v14	<b>Local Co-ordinate Reference:</b>	Well Almont 5-04-02L
<b>Company:</b>	Confluence Resources	<b>TVD Reference:</b>	RKB=5001+24 @ 5025.00ft
<b>Project:</b>	Weld County, Colorado	<b>MD Reference:</b>	RKB=5001+24 @ 5025.00ft
<b>Site:</b>	Section 06-T07N-R64W	<b>North Reference:</b>	True
<b>Well:</b>	Almont 5-04-02L	<b>Survey Calculation Method:</b>	Minimum Curvature
<b>Wellbore:</b>	Original Hole		
<b>Design:</b>	plan1		

Planned Survey									
Measured Depth (ft)	Inclination (°)	Azimuth (°)	Vertical Depth (ft)	+N/-S (ft)	+E/-W (ft)	Map Northing (usft)	Map Easting (usft)	Latitude	Longitude
5,100.00	4.19	115.28	5,095.14	-58.95	124.81	14,747,517.37	1,755,980.10	40.60553302	-104.58364810
5,200.00	4.19	115.28	5,194.87	-62.07	131.41	14,747,514.28	1,755,986.72	40.60552446	-104.58362432
5,300.00	4.19	115.28	5,294.61	-65.19	138.01	14,747,511.20	1,755,993.34	40.60551590	-104.58360054
5,400.00	4.19	115.28	5,394.34	-68.30	144.61	14,747,508.11	1,755,999.95	40.60550734	-104.58357676
5,500.00	4.19	115.28	5,494.07	-71.42	151.21	14,747,505.02	1,756,006.57	40.60549878	-104.58355298
5,600.00	4.19	115.28	5,593.81	-74.54	157.81	14,747,501.94	1,756,013.18	40.60549022	-104.58352920
5,700.00	4.19	115.28	5,693.54	-77.66	164.41	14,747,498.85	1,756,019.80	40.60548166	-104.58350541
5,800.00	4.19	115.28	5,793.27	-80.77	171.01	14,747,495.76	1,756,026.41	40.60547310	-104.58348163
5,900.00	4.19	115.28	5,893.01	-83.89	177.62	14,747,492.68	1,756,033.03	40.60546454	-104.58345785
6,000.00	4.19	115.28	5,992.74	-87.01	184.22	14,747,489.59	1,756,039.64	40.60545597	-104.58343407
6,100.00	4.19	115.28	6,092.47	-90.13	190.82	14,747,486.50	1,756,046.26	40.60544741	-104.58341029
6,200.00	4.19	115.28	6,192.21	-93.25	197.42	14,747,483.42	1,756,052.87	40.60543885	-104.58338651
6,300.00	4.19	115.28	6,291.94	-96.36	204.02	14,747,480.33	1,756,059.49	40.60543029	-104.58336273
6,400.00	4.19	115.28	6,391.67	-99.48	210.62	14,747,477.25	1,756,066.11	40.60542173	-104.58333895
6,500.00	4.19	115.28	6,491.41	-102.60	217.22	14,747,474.16	1,756,072.72	40.60541317	-104.58331516
6,600.00	4.19	115.28	6,591.14	-105.72	223.82	14,747,471.07	1,756,079.34	40.60540461	-104.58329138
6,607.86	4.19	115.28	6,598.98	-105.96	224.34	14,747,470.83	1,756,079.86	40.60540394	-104.58328951
Begin 10°/100' build/turn									
6,700.00	13.11	97.37	6,689.99	-108.74	237.77	14,747,468.11	1,756,093.30	40.60539629	-104.58324112
6,800.00	23.05	93.80	6,784.94	-111.50	268.63	14,747,465.50	1,756,124.17	40.60538872	-104.58312994
6,900.00	33.03	92.32	6,873.09	-113.91	315.52	14,747,463.31	1,756,171.07	40.60538210	-104.58296103
7,000.00	43.01	91.47	6,951.77	-115.89	377.00	14,747,461.62	1,756,232.56	40.60537665	-104.58273952
7,100.00	53.01	90.89	7,018.58	-117.39	451.22	14,747,460.47	1,756,306.78	40.60537254	-104.58247214
7,200.00	63.00	90.44	7,071.51	-118.36	535.91	14,747,459.90	1,756,391.48	40.60536988	-104.58216702
7,300.00	72.99	90.07	7,108.93	-118.77	628.50	14,747,459.94	1,756,484.08	40.60536876	-104.58183342
7,400.00	82.99	89.74	7,129.71	-118.60	726.19	14,747,460.56	1,756,581.76	40.60536921	-104.58148148
7,470.17	90.00	89.51	7,134.00	-118.14	796.18	14,747,461.35	1,756,651.75	40.60537045	-104.58122932
Begin 90.00° lateral									
7,500.00	90.00	89.51	7,134.00	-117.89	826.01	14,747,461.74	1,756,681.58	40.60537114	-104.58112185
7,600.00	90.00	89.51	7,134.00	-117.04	926.01	14,747,463.06	1,756,781.57	40.60537346	-104.58076158
7,700.00	90.00	89.51	7,134.00	-116.20	1,026.01	14,747,464.38	1,756,881.56	40.60537577	-104.58040132
7,800.00	90.00	89.51	7,134.00	-115.35	1,126.00	14,747,465.70	1,756,981.55	40.60537809	-104.58004106
7,900.00	90.00	89.51	7,134.00	-114.50	1,226.00	14,747,467.02	1,757,081.54	40.60538040	-104.57968080
8,000.00	90.00	89.51	7,134.00	-113.66	1,326.00	14,747,468.34	1,757,181.53	40.60538271	-104.57932054
8,100.00	90.00	89.51	7,134.00	-112.81	1,425.99	14,747,469.66	1,757,281.53	40.60538502	-104.57896028
8,200.00	90.00	89.51	7,134.00	-111.96	1,525.99	14,747,470.98	1,757,381.52	40.60538733	-104.57860002
8,300.00	90.00	89.51	7,134.00	-111.12	1,625.99	14,747,472.30	1,757,481.51	40.60538964	-104.57823976
8,400.00	90.00	89.51	7,134.00	-110.27	1,725.98	14,747,473.62	1,757,581.50	40.60539195	-104.57787950
8,500.00	90.00	89.51	7,134.00	-109.42	1,825.98	14,747,474.94	1,757,681.49	40.60539425	-104.57751924
8,600.00	90.00	89.51	7,134.00	-108.57	1,925.97	14,747,476.26	1,757,781.48	40.60539656	-104.57715898
8,700.00	90.00	89.51	7,134.00	-107.73	2,025.97	14,747,477.58	1,757,881.47	40.60539886	-104.57679872
8,800.00	90.00	89.51	7,134.00	-106.88	2,125.97	14,747,478.90	1,757,981.46	40.60540116	-104.57643846
8,900.00	90.00	89.51	7,134.00	-106.03	2,225.96	14,747,480.21	1,758,081.45	40.60540346	-104.57607820
9,000.00	90.00	89.51	7,134.00	-105.19	2,325.96	14,747,481.53	1,758,181.45	40.60540576	-104.57571794
9,100.00	90.00	89.51	7,134.00	-104.34	2,425.96	14,747,482.85	1,758,281.44	40.60540806	-104.57535768
9,200.00	90.00	89.51	7,134.00	-103.49	2,525.95	14,747,484.17	1,758,381.43	40.60541036	-104.57499742
9,300.00	90.00	89.51	7,134.00	-102.65	2,625.95	14,747,485.49	1,758,481.42	40.60541266	-104.57463715
9,400.00	90.00	89.51	7,134.00	-101.80	2,725.95	14,747,486.81	1,758,581.41	40.60541495	-104.57427689
9,500.00	90.00	89.51	7,134.00	-100.95	2,825.94	14,747,488.13	1,758,681.40	40.60541725	-104.57391663
9,600.00	90.00	89.51	7,134.00	-100.11	2,925.94	14,747,489.45	1,758,781.39	40.60541954	-104.57355637
9,700.00	90.00	89.51	7,134.00	-99.26	3,025.93	14,747,490.77	1,758,881.38	40.60542183	-104.57319611
9,800.00	90.00	89.51	7,134.00	-98.41	3,125.93	14,747,492.09	1,758,981.37	40.60542412	-104.57283585
9,900.00	90.00	89.51	7,134.00	-97.56	3,225.93	14,747,493.41	1,759,081.37	40.60542641	-104.57247559
10,000.00	90.00	89.51	7,134.00	-96.72	3,325.92	14,747,494.73	1,759,181.36	40.60542870	-104.57211533

<b>Database:</b>	DB_Jul2216dt_v14	<b>Local Co-ordinate Reference:</b>	Well Almont 5-04-02L
<b>Company:</b>	Confluence Resources	<b>TVD Reference:</b>	RKB=5001+24 @ 5025.00ft
<b>Project:</b>	Weld County, Colorado	<b>MD Reference:</b>	RKB=5001+24 @ 5025.00ft
<b>Site:</b>	Section 06-T07N-R64W	<b>North Reference:</b>	True
<b>Well:</b>	Almont 5-04-02L	<b>Survey Calculation Method:</b>	Minimum Curvature
<b>Wellbore:</b>	Original Hole		
<b>Design:</b>	plan1		

Planned Survey									
Measured Depth (ft)	Inclination (°)	Azimuth (°)	Vertical Depth (ft)	+N/-S (ft)	+E/-W (ft)	Map Northing (usft)	Map Easting (usft)	Latitude	Longitude
10,100.00	90.00	89.51	7,134.00	-95.87	3,425.92	14,747,496.05	1,759,281.35	40.60543099	-104.57175507
10,200.00	90.00	89.51	7,134.00	-95.02	3,525.92	14,747,497.37	1,759,381.34	40.60543328	-104.57139481
10,300.00	90.00	89.51	7,134.00	-94.18	3,625.91	14,747,498.69	1,759,481.33	40.60543556	-104.57103455
10,400.00	90.00	89.51	7,134.00	-93.33	3,725.91	14,747,500.01	1,759,581.32	40.60543785	-104.57067429
10,500.00	90.00	89.51	7,134.00	-92.48	3,825.91	14,747,501.32	1,759,681.31	40.60544013	-104.57031402
10,600.00	90.00	89.51	7,134.00	-91.64	3,925.90	14,747,502.64	1,759,781.30	40.60544241	-104.56995376
10,700.00	90.00	89.51	7,134.00	-90.79	4,025.90	14,747,503.96	1,759,881.29	40.60544469	-104.56959350
10,800.00	90.00	89.51	7,134.00	-89.94	4,125.90	14,747,505.28	1,759,981.29	40.60544697	-104.56923324
10,900.00	90.00	89.51	7,134.00	-89.09	4,225.89	14,747,506.60	1,760,081.28	40.60544925	-104.56887298
11,000.00	90.00	89.51	7,134.00	-88.25	4,325.89	14,747,507.92	1,760,181.27	40.60545153	-104.56851272
11,100.00	90.00	89.51	7,134.00	-87.40	4,425.88	14,747,509.24	1,760,281.26	40.60545380	-104.56815246
11,200.00	90.00	89.51	7,134.00	-86.55	4,525.88	14,747,510.56	1,760,381.25	40.60545608	-104.56779220
11,300.00	90.00	89.51	7,134.00	-85.71	4,625.88	14,747,511.88	1,760,481.24	40.60545835	-104.56743194
11,400.00	90.00	89.51	7,134.00	-84.86	4,725.87	14,747,513.20	1,760,581.23	40.60546063	-104.56707168
11,500.00	90.00	89.51	7,134.00	-84.01	4,825.87	14,747,514.52	1,760,681.22	40.60546290	-104.56671141
11,600.00	90.00	89.51	7,134.00	-83.17	4,925.87	14,747,515.84	1,760,781.21	40.60546517	-104.56635115
11,700.00	90.00	89.51	7,134.00	-82.32	5,025.86	14,747,517.16	1,760,881.21	40.60546744	-104.56599089
11,800.00	90.00	89.51	7,134.00	-81.47	5,125.86	14,747,518.48	1,760,981.20	40.60546971	-104.56563063
11,900.00	90.00	89.51	7,134.00	-80.63	5,225.86	14,747,519.80	1,761,081.19	40.60547198	-104.56527037
12,000.00	90.00	89.51	7,134.00	-79.78	5,325.85	14,747,521.12	1,761,181.18	40.60547424	-104.56491011
12,100.00	90.00	89.51	7,134.00	-78.93	5,425.85	14,747,522.43	1,761,281.17	40.60547651	-104.56454985
12,200.00	90.00	89.51	7,134.00	-78.08	5,525.85	14,747,523.75	1,761,381.16	40.60547877	-104.56418959
12,300.00	90.00	89.51	7,134.00	-77.24	5,625.84	14,747,525.07	1,761,481.15	40.60548103	-104.56382933
12,400.00	90.00	89.51	7,134.00	-76.39	5,725.84	14,747,526.39	1,761,581.14	40.60548330	-104.56346906
12,500.00	90.00	89.51	7,134.00	-75.54	5,825.83	14,747,527.71	1,761,681.13	40.60548556	-104.56310880
12,600.00	90.00	89.51	7,134.00	-74.70	5,925.83	14,747,529.03	1,761,781.13	40.60548782	-104.56274854
12,700.00	90.00	89.51	7,134.00	-73.85	6,025.83	14,747,530.35	1,761,881.12	40.60549008	-104.56238828
12,800.00	90.00	89.51	7,134.00	-73.00	6,125.82	14,747,531.67	1,761,981.11	40.60549233	-104.56202802
12,900.00	90.00	89.51	7,134.00	-72.16	6,225.82	14,747,532.99	1,762,081.10	40.60549459	-104.56166776
13,000.00	90.00	89.51	7,134.00	-71.31	6,325.82	14,747,534.31	1,762,181.09	40.60549684	-104.56130750
13,100.00	90.00	89.51	7,134.00	-70.46	6,425.81	14,747,535.63	1,762,281.08	40.60549910	-104.56094724
13,200.00	90.00	89.51	7,134.00	-69.62	6,525.81	14,747,536.95	1,762,381.07	40.60550135	-104.56058697
13,300.00	90.00	89.51	7,134.00	-68.77	6,625.81	14,747,538.27	1,762,481.06	40.60550360	-104.56022671
13,400.00	90.00	89.51	7,134.00	-67.92	6,725.80	14,747,539.59	1,762,581.05	40.60550585	-104.55986645
13,500.00	90.00	89.51	7,134.00	-67.07	6,825.80	14,747,540.91	1,762,681.04	40.60550810	-104.55950619
13,600.00	90.00	89.51	7,134.00	-66.23	6,925.80	14,747,542.23	1,762,781.04	40.60551035	-104.55914593
13,700.00	90.00	89.51	7,134.00	-65.38	7,025.79	14,747,543.54	1,762,881.03	40.60551260	-104.55878567
13,800.00	90.00	89.51	7,134.00	-64.53	7,125.79	14,747,544.86	1,762,981.02	40.60551484	-104.55842541
13,900.00	90.00	89.51	7,134.00	-63.69	7,225.78	14,747,546.18	1,763,081.01	40.60551709	-104.55806515
14,000.00	90.00	89.51	7,134.00	-62.84	7,325.78	14,747,547.50	1,763,181.00	40.60551933	-104.55770488
14,100.00	90.00	89.51	7,134.00	-61.99	7,425.78	14,747,548.82	1,763,280.99	40.60552158	-104.55734462
14,200.00	90.00	89.51	7,134.00	-61.15	7,525.77	14,747,550.14	1,763,380.98	40.60552382	-104.55698436
14,300.00	90.00	89.51	7,134.00	-60.30	7,625.77	14,747,551.46	1,763,480.97	40.60552606	-104.55662410
14,400.00	90.00	89.51	7,134.00	-59.45	7,725.77	14,747,552.78	1,763,580.96	40.60552830	-104.55626384
14,500.00	90.00	89.51	7,134.00	-58.61	7,825.76	14,747,554.10	1,763,680.96	40.60553054	-104.55590358
14,600.00	90.00	89.51	7,134.00	-57.76	7,925.76	14,747,555.42	1,763,780.95	40.60553277	-104.55554332
14,700.00	90.00	89.51	7,134.00	-56.91	8,025.76	14,747,556.74	1,763,880.94	40.60553501	-104.55518305
14,800.00	90.00	89.51	7,134.00	-56.06	8,125.75	14,747,558.06	1,763,980.93	40.60553724	-104.55482279
14,900.00	90.00	89.51	7,134.00	-55.22	8,225.75	14,747,559.38	1,764,080.92	40.60553948	-104.55446253
15,000.00	90.00	89.51	7,134.00	-54.37	8,325.74	14,747,560.70	1,764,180.91	40.60554171	-104.55410227
15,100.00	90.00	89.51	7,134.00	-53.52	8,425.74	14,747,562.02	1,764,280.90	40.60554394	-104.55374201
15,200.00	90.00	89.51	7,134.00	-52.68	8,525.74	14,747,563.34	1,764,380.89	40.60554617	-104.55338175
15,300.00	90.00	89.51	7,134.00	-51.83	8,625.73	14,747,564.65	1,764,480.88	40.60554840	-104.55302148
15,400.00	90.00	89.51	7,134.00	-50.98	8,725.73	14,747,565.97	1,764,580.88	40.60555063	-104.55266122
15,500.00	90.00	89.51	7,134.00	-50.14	8,825.73	14,747,567.29	1,764,680.87	40.60555286	-104.55230096

<b>Database:</b>	DB_Jul2216dt_v14	<b>Local Co-ordinate Reference:</b>	Well Almont 5-04-02L
<b>Company:</b>	Confluence Resources	<b>TVD Reference:</b>	RKB=5001+24 @ 5025.00ft
<b>Project:</b>	Weld County, Colorado	<b>MD Reference:</b>	RKB=5001+24 @ 5025.00ft
<b>Site:</b>	Section 06-T07N-R64W	<b>North Reference:</b>	True
<b>Well:</b>	Almont 5-04-02L	<b>Survey Calculation Method:</b>	Minimum Curvature
<b>Wellbore:</b>	Original Hole		
<b>Design:</b>	plan1		

Planned Survey									
Measured Depth (ft)	Inclination (°)	Azimuth (°)	Vertical Depth (ft)	+N/-S (ft)	+E/-W (ft)	Map Northing (usft)	Map Easting (usft)	Latitude	Longitude
15,600.00	90.00	89.51	7,134.00	-49.29	8,925.72	14,747,568.61	1,764,780.86	40.60555508	-104.55194070
15,700.00	90.00	89.51	7,134.00	-48.44	9,025.72	14,747,569.93	1,764,880.85	40.60555731	-104.55158044
15,800.00	90.00	89.51	7,134.00	-47.60	9,125.72	14,747,571.25	1,764,980.84	40.60555953	-104.55122018
15,900.00	90.00	89.51	7,134.00	-46.75	9,225.71	14,747,572.57	1,765,080.83	40.60556175	-104.55085991
16,000.00	90.00	89.51	7,134.00	-45.90	9,325.71	14,747,573.89	1,765,180.82	40.60556397	-104.55049965
16,100.00	90.00	89.51	7,134.00	-45.05	9,425.71	14,747,575.21	1,765,280.81	40.60556620	-104.55013939
16,200.00	90.00	89.51	7,134.00	-44.21	9,525.70	14,747,576.53	1,765,380.80	40.60556841	-104.54977913
16,300.00	90.00	89.51	7,134.00	-43.36	9,625.70	14,747,577.85	1,765,480.80	40.60557063	-104.54941887
16,400.00	90.00	89.51	7,134.00	-42.51	9,725.69	14,747,579.17	1,765,580.79	40.60557285	-104.54905861
16,500.00	90.00	89.51	7,134.00	-41.67	9,825.69	14,747,580.49	1,765,680.78	40.60557506	-104.54869834
16,600.00	90.00	89.51	7,134.00	-40.82	9,925.69	14,747,581.81	1,765,780.77	40.60557728	-104.54833808
16,700.00	90.00	89.51	7,134.00	-39.97	10,025.68	14,747,583.13	1,765,880.76	40.60557949	-104.54797782
16,800.00	90.00	89.51	7,134.00	-39.13	10,125.68	14,747,584.45	1,765,980.75	40.60558171	-104.54761756
16,900.00	90.00	89.51	7,134.00	-38.28	10,225.68	14,747,585.76	1,766,080.74	40.60558392	-104.54725730
17,000.00	90.00	89.51	7,134.00	-37.43	10,325.67	14,747,587.08	1,766,180.73	40.60558613	-104.54689704
17,100.00	90.00	89.51	7,134.00	-36.59	10,425.67	14,747,588.40	1,766,280.72	40.60558834	-104.54653677
17,125.48	90.00	89.51	7,134.00	-36.37	10,451.15	14,747,588.74	1,766,306.20	40.60558890	-104.54644499
PBHL/TD 17125.48 MD/7134.00 TVD									

Design Targets									
Target Name	Dip Angle (°)	Dip Dir. (°)	TVD (ft)	+N/-S (ft)	+E/-W (ft)	Northing (usft)	Easting (usft)	Latitude	Longitude
- hit/miss target									
- Shape									
Almont 5-04-02L PBHL ' - plan hits target center - Point	0.00	0.00	7,134.00	-36.37	10,451.15	14,747,588.74	1,766,306.20	40.60558890	-104.54644499
Almont 5-04-02L LP 137 - plan hits target center - Point	0.00	0.00	7,134.00	-118.14	796.18	14,747,461.35	1,756,651.75	40.60537045	-104.58122932

Plan Annotations				
Measured Depth (ft)	Vertical Depth (ft)	Local Coordinates		Comment
		+N/-S (ft)	+E/-W (ft)	
3,000.00	3,000.00	0.00	0.00	KOP Begin 1°/100' build
3,418.64	3,418.27	-6.53	13.82	Begin 4.19° tangent
6,607.86	6,598.98	-105.96	224.34	Begin 10°/100' build/turn
7,470.17	7,134.00	-118.14	796.18	Begin 90.00° lateral
17,125.48	7,134.00	-36.37	10,451.15	PBHL/TD 17125.48 MD/7134.00 TVD