

Cementing Treatment



Start Date 10/31/2017 **Well** 33-10-4L Buford
End Date 11/7/2017 **County** WELD
Client Confluence DJ LLC **State/Province** CO
Client Field Rep **API** 05-123-45542
Service Supervisor **Formation**
Field Ticket No. **Rig**
District Cheyenne, WY **Type of Job** Surface

WELL GEOMETRY

Type	ID (in)	OD (in)	Wt. (lb/ft)	MD (ft)	TVD (ft)	Excess(%)
Previous Casing	15.50	16.00	43.00	80.00	80.00	
Open Hole	12.25			1,570.00	1,570.00	30.00
Casing	8.76	9.63	36.00	1,552.00	1,552.00	

Shoe Length (ft): 42

HARDWARE

Bottom Plug Used? Yes
Top Plug Used? No
Centralizers Used No
Landing Collar Depth (ft) 1,508

CIRCULATION PRIOR TO JOB

Circulation Prior to Job No **Solids Present at End of Circulation** No
Lost Circulation Prior to Cement Job No **Flare Prior to/during the Cement Job** No
Gas Present No

Cementing Treatment



BJ FLUID DETAILS

Fluid Type	Fluid Name	Density (ppg)	Yield (Cu Ft/sk)	H2O Req. (gals/sk)	Vol (sk)	Vol (Cu Ft)	Vol (bbls)
Spacer / Pre Flush / Flush	Water	8.3300					20.0000
Lead Slurry	S100-12	12.0000	2.5234	14.84	186	469.0000	83.4000
Tail Slurry	S100-12	12.5000	2.2199	12.57	100	221.0000	39.3000
Displacement Final	WBM	8.5000				0.0000	112.3000

Fluid Type	Fluid Name	Component	Concentration	UOM
Lead Slurry	S100-12	ACCELERATOR, SALT, CHLORIDE, CALCIUM, A-7P, PELLETS	2.00	LBS/SK
Lead Slurry	S100-12	CEMENT EXTENDER, GYPSUM, A-10	5.00	BWOB
Lead Slurry	S100-12	CEMENT, ASTM TYPE III	100.00	PCT
Lead Slurry	S100-12	CEMENT EXTENDER, SODIUM METASILICATE	2.00	LBS/SK
Tail Slurry	S100-12	CEMENT, ASTM TYPE III	100.00	PCT
Tail Slurry	S100-12	ACCELERATOR, SALT, CHLORIDE, CALCIUM, A-7P, PELLETS	2.00	LBS/SK
Tail Slurry	S100-12	CEMENT EXTENDER, GYPSUM, A-10	5.00	BWOB
Tail Slurry	S100-12	CEMENT EXTENDER, SODIUM METASILICATE	2.00	LBS/SK

TREATMENT SUMMARY

Time	Fluid	Rate (bpm)	Fluid Vol. (bbls)
	Water	0.00	20.00
	S100-12	0.00	83.40
	S100-12	0.00	39.30
	WBM	0.00	112.30

Cementing Treatment



DISPLACEMENT AND END OF JOB SUMMARY

Did Float Hold?	Yes	Top Out Cement Spotted	No
Bump Plug	No	Lost Circulation During Cement Job	No
Were Returned Planned at Surface	No		

CEMENT PLUG

Bottom of Cement Plug?	No	Wiper Balls Used?	No
Wiper Ball Quantity	0	Plug Catcher	No
Number of Plugs	0		

Customer Name CONFLUENCE RESOURCES
 Well Name BUFORD 33
 Job Type Surface

District Cheyenne
 Supervisor ANDREW CHAMBERS
 Engineer



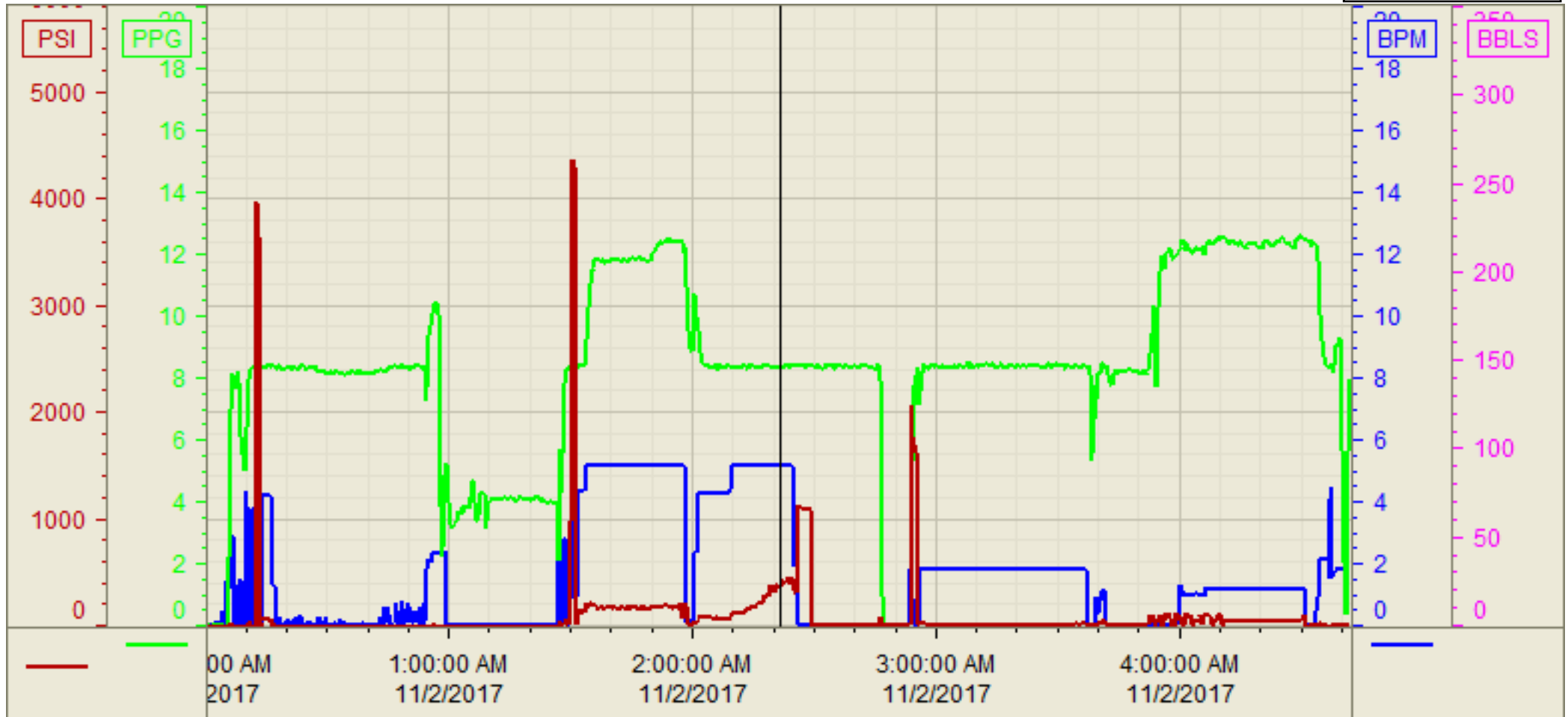
Seq No.	Start Date/Time	Category	Event	Equipment	Event ID	Density (lb/gal)	Pump Rate (bpm)	Pump Vol (bbls)	Pipe Pressure (psi)	Comments
1	11/01/17/5:00	Mobilization	Call Out		1					BJ CREW CALLED OUT
2	11/01/17/5:45	Operational	Pre Convoy		2					DISCUSSED HAZARDS OF DRIVING
3	11/01/17/6:00	Mobilization	DEPART SHOP		3					BJ CREW LEAVES SHOP FOR LOCATION
4	11/01/17/10:00		ASSESSMENT OF LOCATION		4					MET WITH CUSTOMER REP WENT JOB DETAILS AND WHERE TO SPOT EQUIPMENT
5	11/01/17/10:45	Operational	PRE RIG UP		5					DISCUSSED HAZARDS OF RIGGING UP IRON
6	11/01/17/11:00	Operational	RIG UP		6					BJ CREW RIGS UP LOCATION
7	11/01/17/11:30	Operational	Other (See comments)		7					RIG UP COMPLETED SAFELY
8	11/01/17/23:30	Operational	PRE JOB		8					CONDUCTED STEACS WITH CREW AND RIG CREW
9	11/02/17/12:20	Operational	SPACER		9	8.33	5	20	90	20/BBL FRESH WATER SPACER AHEAD
10	11/02/2017/12:30	Operational	SHUT DOWN		10					HAD TO SHUT DOWN COULD NOT PULL WATER HAD TO RIG DOWN AND MOVE TRUCKS CLOSER
11	11/02/17/1:35	Operational	SPACER		11	8.33	5	10	50	10/BBL FRESH WATER AHEAD
12	11/02/17/1:36	Operational	PRESSURE TEST		12	8.33	1	1	3000	TESTED LINES TO 3000
13	11/02/17/1:40	Operational	Pump Lead Cement		13	12	4	84.1	212	187/SKS,84.1/BBL,12/LB,2.53YLD,14.85GAL/SK
14	11/02/17/1:56	Operational	Pump Tail Cement		14	12.5	5	39.6	173	100/SKS,39.6/BBL,12.5/LB,2.22YLD,12.8GAL/SK
15	11/02/17/2:05	Operational	SHUTDOWN		15					ALL CEMENT PUMPING COMPLETE
16	11/02/17/2:06	Operational	DROP PLUG		16					TOP PLUG LEFT CEMENTING HEAD
17	11/02/17/2:06	Operational	DISPLACEMENT		17	8.33	5	116.3		DISPLACED WITH 116.3 BBL FRESH WATER
18	11/02/17/2:32	Operational	SLOW RATE		18			106		SLOWED TO 2/BBL MIN TO BUMP
19	11/02/17/2:34	Operational	LAND PLUG		19	8.33	2	116.3		BUMPED AT CALCULATED FCP WAS 700 TO 1200
20	11/02/17/2:36	Operational	CHECK FLOATS		20					FLOATS HELD .5 BBL BACK
21	11/02/17/2:37	Operational	OTHER		21					NO SPACER OR CEMENT TO SURFACE RIG UP FOR TOP OUT
22	11/02/17/3:46	Operational	WATER AHEAD		22					PUMPED 2/BB L AHEAD OF TOP OUT
23	11/02/17/3:59	Operational	TOP OUT		23	12				STARTED PUMPING 12/LB TOPOUT
24	11/02/17/4:28	Operational	CEMENT TO SURFACE		24					CEMENT TO SURFACE AT 23/BBL PUMPED
25	11/02/17/4:38	Operational	SHUT DOWN		25					,PUMPED A TOTAL OF 78/SKS,30/BBL
26	11/02/17/5:00	Operational	PRE RIG DOWN		26					TOP OUT PUMPING COMPLETE
27	11/02/17/5:15	Operational	RIG DOWN		27					DISCUSSED HAZARDS OF RIG DOWN
28	11/02/17/6:15	Operational	RIG DOWN COMPLETE		28					BJ CREW RIGS DOWN
29	11/2/2017 6:30	Operational	PRE CONVOY		29					RIG DOWN COMPLETED SAFELY
30	11/02/17/6:45	Operational	DEPART LOCATION							DISCUSSED HAZARDS OF DRIVING
31										DEPART LOCATION FOR SHOP
32										
33										
34										
35										
36										
37										
38										
39										
40										
41										
42										
43										
44										
45										
46										
47										
48										
49										
50										
51										
52										
53										
54										
55										
56										
57										
58										
59										
60										
61										
62										
63										
64										
65										
66										
67										
68										
69										
70										
71										
72										
73										
74										

Customer: CONFLUENCE
 RESOURCES
 Well Number: 33-10-4L
 Lease Info: BUFORD



Print Date/Time

11/2/2017 5:24:38 AM



	Name	Y value	X value/time stamp	Tag name Y
1	PS - Press (PSI)	354.3 i.	11/2/2017 2:21:32 AM i.	Cementer/PS_DISCHARGE_PRESS_DIAL
2	DH - Density (PPG)	8.33	11/2/2017 2:21:30 AM	Cementer/DENSITY2_ACTUAL_RATE
3	Combined Rate (BPM)	5.15 i.	11/2/2017 2:21:32 AM i.	Cementer/Flow_Combined
4				
5				