

Cementing Treatment



Start Date	11/4/2017	Well	33-9-3L Buford
End Date	11/5/2017	County	WELD
Client	Confluence DJ LLC	State/Province	CO
Client Field Rep SCOTT OSBORN		API	05-123-45544
Service Supervisor ANDREW CHAMBERS		Formation	
Field Ticket No.		Rig	
District	Cheyenne, WY	Type of Job	Surface

WELL GEOMETRY

Type	ID (in)	OD (in)	Wt. (lb/ft)	MD (ft)	TVD (ft)	Excess(%)
Previous Casing	15.50	16.00	43.00	80.00	80.00	
Open Hole	12.25			1,565.00	1,565.00	30.00
Casing	8.76	9.63	36.00	1,546.00	1,546.00	

Shoe Length (ft): 42

HARDWARE

Bottom Plug Used?	YES
Bottom Plug Provided By	CUSTOMER
Top Plug Used?	YES
Centralizers Used	No
Landing Collar Depth (ft)	1,504

CIRCULATION PRIOR TO JOB

Well Circulated By	Rig	Solids Present at End of Circulation	No
Circulation Prior to Job	YES		
Circulation Time (min)	16/MIN		
Circulation Rate (bpm)	5/BBL/MIN		

Cementing Treatment



Circulation Volume (bbls)	86	Flare Prior to/during the Cement Job	No
Lost Circulation Prior to Cement Job	No	Gas Present	No
Mud Density In (ppg)	8.6		

BJ FLUID DETAILS

Fluid Type	Fluid Name	Density (ppg)	Yield (Cu Ft/sk)	H2O Req. (gals/sk)	Vol (sk)	Vol (Cu Ft)	Vol (bbls)
Spacer / Pre Flush / Flush	Water	8.3300					20.0000
Lead Slurry	S100-12	12.0000	2.5298	14.86	208	469.0000	83.4000
Tail Slurry	S100-12	12.5000	2.2256	12.59	100	221.0000	39.3000
Displacement Final	WBM	8.5000				0.0000	112.3000

Fluid Type	Fluid Name	Component	Concentration	UOM
Lead Slurry	S100-12	CEMENT EXTENDER, SODIUM METASILICATE	2.00	LBS/SK
Lead Slurry	S100-12	ACCELERATOR, SALT, CHLORIDE, CALCIUM, A-7P, PELLETS	2.00	LBS/SK
Lead Slurry	S100-12	CEMENT, ASTM TYPE III	100.00	PCT
Lead Slurry	S100-12	IntegraSeal CELLO	0.13	LBS/SK
Lead Slurry	S100-12	CEMENT EXTENDER, GYPSUM, A-10	5.00	BWOB
Lead Slurry	S100-12	FP-25, Dry Foam Preventer (BJS Only)	0.30	BWOB
Tail Slurry	S100-12	CEMENT EXTENDER, SODIUM METASILICATE	2.00	LBS/SK
Tail Slurry	S100-12	CEMENT EXTENDER, GYPSUM, A-10	5.00	BWOB
Tail Slurry	S100-12	CEMENT, ASTM TYPE III	100.00	PCT
Tail Slurry	S100-12	ACCELERATOR, SALT, CHLORIDE, CALCIUM, A-7P, PELLETS	2.00	LBS/SK
Tail Slurry	S100-12	IntegraSeal CELLO	0.13	LBS/SK

Cementing Treatment



Tail Slurry	S100-12	FP-25, Dry Foam Preventer (BJS Only)	0.30	BWOB
-------------	---------	---	------	------

TREATMENT SUMMARY

Time	Fluid	Rate (bpm)	Fluid Vol. (bbls)
	Water	0.00	20.00
	S100-12	0.00	83.40
	S100-12	0.00	39.30
	WBM	0.00	112.30

DISPLACEMENT AND END OF JOB SUMMARY

Displaced By

Calculated Displacement Volume (bbls)	116.1	Method Used to Verify Returns	Visual
Actual Displacement Volume (bbls)	115	Amount of Spacer to Surface	0
Did Float Hold?	Yes	Pressure Left on Casing (psi)	660
Bump Plug	YES	Amount Bled Back After Job	.5
Bump Plug Pressure (psi)		Top Out Cement Spotted	YES
Were Returned Planned at Surface	YES	Lost Circulation During Cement Job	No
Cement returns During Job	YES		

CEMENT PLUG

Bottom of Cement Plug?	No	Wiper Balls Used?	No
Wiper Ball Quantity	0	Plug Catcher	No
Number of Plugs	0		

Customer Name CONFLUENCE
Well Name BUFORD
Job Type Surface

District Cheyenne
Supervisor ANDREW CHAMBERS
Engineer



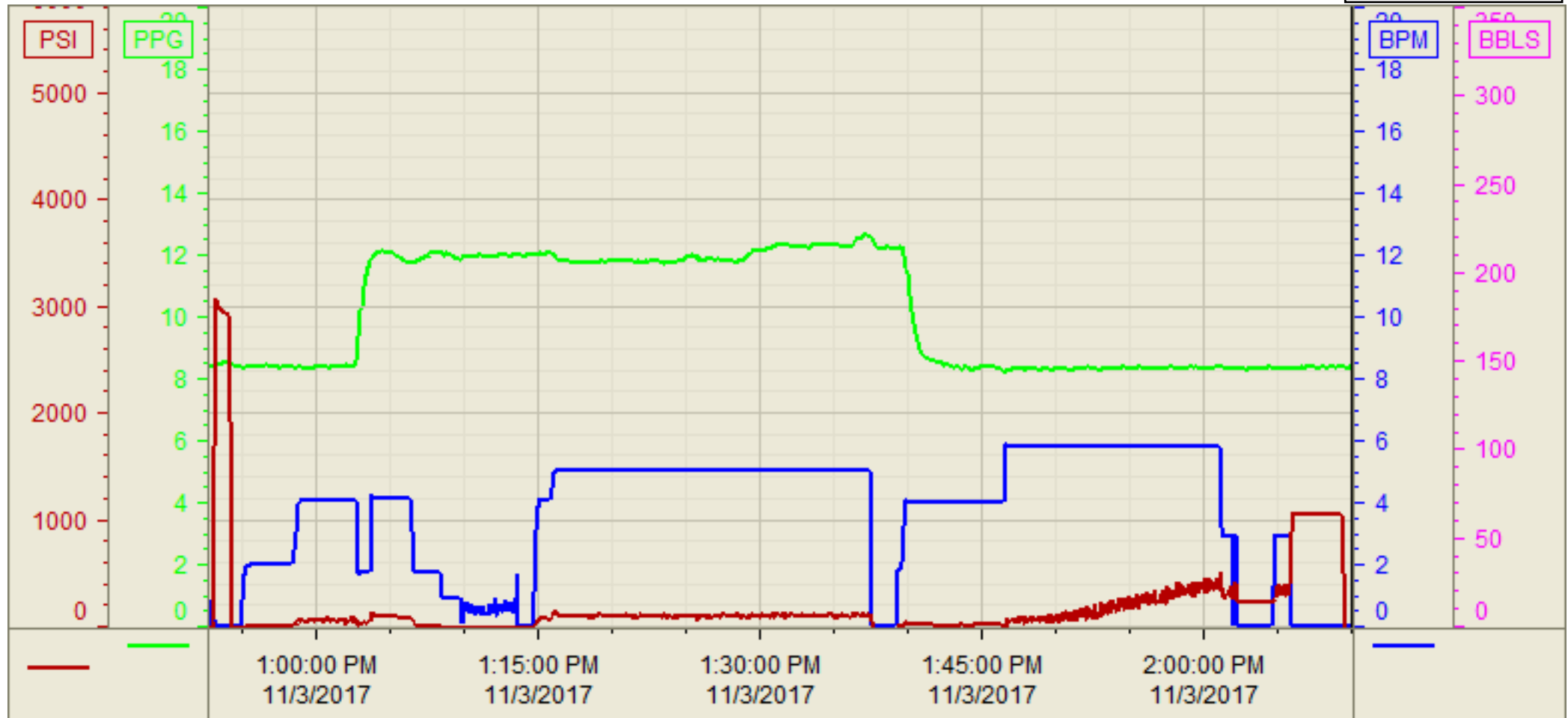
Seq No.	Start Date/Time	Category	Event	Equipment	Event ID	Density (lb/gal)	Pump Rate (bpm)	Pump Vol (bbls)	Pipe Pressure (psi)	Comments
1	11/3/17/12:00	Mobilization	CALL OUT							BJ CREW CALLED OUT ALREADY STAGED ON LOCATION, REQUESTED ON LOCATION AT 6:00 AM
2	11/3/17/6:00		ASSESSMENT OF LOCATION							MET WITH CUSTOMER REP WENT OVER JOB DETAILS AND WHERE TO SPOT EQUIPMENT
3	11/3/17/7:00		PRE RIG UP							DISCUSSED HAZARDS OF RIGGING UP IRON
4	11/3/17/7:15		RIG UP		50					BJ CREW RIGS UP
5	11/3/17/7:50		RIG UP COMPLETE							RIG UP COMPLETED SAFELY
6	11/3/17/12:30		PRE JOB							STEACS BRIEFING
7	11/3/17/12://:57		FILL LINES			8.33	2	2	50	FILLED LINES TWO/BBL FRESH WATER
8	11/3/17/12:59		PRESSURE TEST		54	8.33	1	2	3000	TESTED LINES TO 3000
9	11/3/17/13:01		SPACER			8.33	5	20	50	20/BBL FRESH AHEAD WITH DYE
10	11/3/17/1:09		LEAD CEMENT			12	5	93.6	200	208/SKS,93.6/BBL,2,53YLD,14.85GAL/SK,12/LB,HAD TO SHUT DOWN WHEN FIRST STARTED TO FIND SCALES
11	11/3/17/13:35		TAIL CEMENT			12.5	5	39.6	212	100/SKS,12.5/LB,39.6BBL,2.22YLD,12.58GAL/SK
12	11/3/17/13:44		SHUT DOWN							ALL CEMENT PUMPING COMPLETE
13	11/3/17/13:46		DROP PLUG							TOP PLUG LEFT CEMENTING HEAD,WASH PUMPS AND LINES ON TOP OF PLUG
14	11/3/17/13:46		DISPLACEMENT			8.33	6	115	150	STARTED PUMPING DISPLACEMENT
15	11/3/17/14:08		CEMENT TO SURFACE					7		7/BBL CEMENT TO SURFACE AT 108 DISPLACED
16	11/3/17/14:09		SHUTDOWN					113		SHUTDOWN FOR RIG TO SWAP PUMPS
17	11/3/17/14:11		PUMPING		59	8.33	2	113		CAME ONLINE AT 2/BB/MIN TO BUMP
18	11/3/17/14:12		BUMP PLUG					115	1000	BUMPED AT 115 FCP WAS 300 TO 1000
19	11/3/17/14:15		CHECK FLOATS		68					FLOATS HELD .5 BBL BACK
20	11/3/17/14:30		PRE RIG DOWN							DISCUSSED HAZARDS OF RIG DOWN
21	11/3/17/14:45		RIG DOWN		73					BJ CREW RIGS DOWN
22	11/3/17/15:30		RIG DOWN COMPLETE							RIG DOWN COMPLETED
23	11/3/17/15:45		PRE CONVOY							DISCUSSED HAZARDS OF DRIVING
24	11/3/17/16:00		DEPART LOCATION							BJ CREW DEPARTS LOCATION
25										
26										
27										
28										
29										
30										
31										
32										
33										
34										
35										
36										
37										
38										
39										
40										
41										
42										
43										
44										
45										
46										
47										
48										
49										
50										
51										
52										
53										
54										
55										
56										
57										
58										
59										
60										
61										
62										
63										
64										
65										
66										
67										
68										
69										
70										
71										
72										
73										
74										
75										

Customer: CONFLUENCE
RESOURCES
Well Number: 33-9-3L
Lease Info: BUFORD



Print Date/Time

11/3/2017 2:37:36 PM



	Name	Y value	X value/time stamp	Tag name Y
1	PS - Press (PSI)	-34.7 i.	11/3/2017 2:10:00 PM i.	CementerPS_DISCHARGE_PRESS_DIAL
2	DH - Density (PPG)		11/3/2017 2:10:00 PM i.	CementerDENSITY2_ACTUAL_RATE
3	Combined Rate (BPM)	0.00	11/3/2017 2:10:02 PM	CementerFlow_Combined
4				
5				

Source: Control1 2:37:31 PM