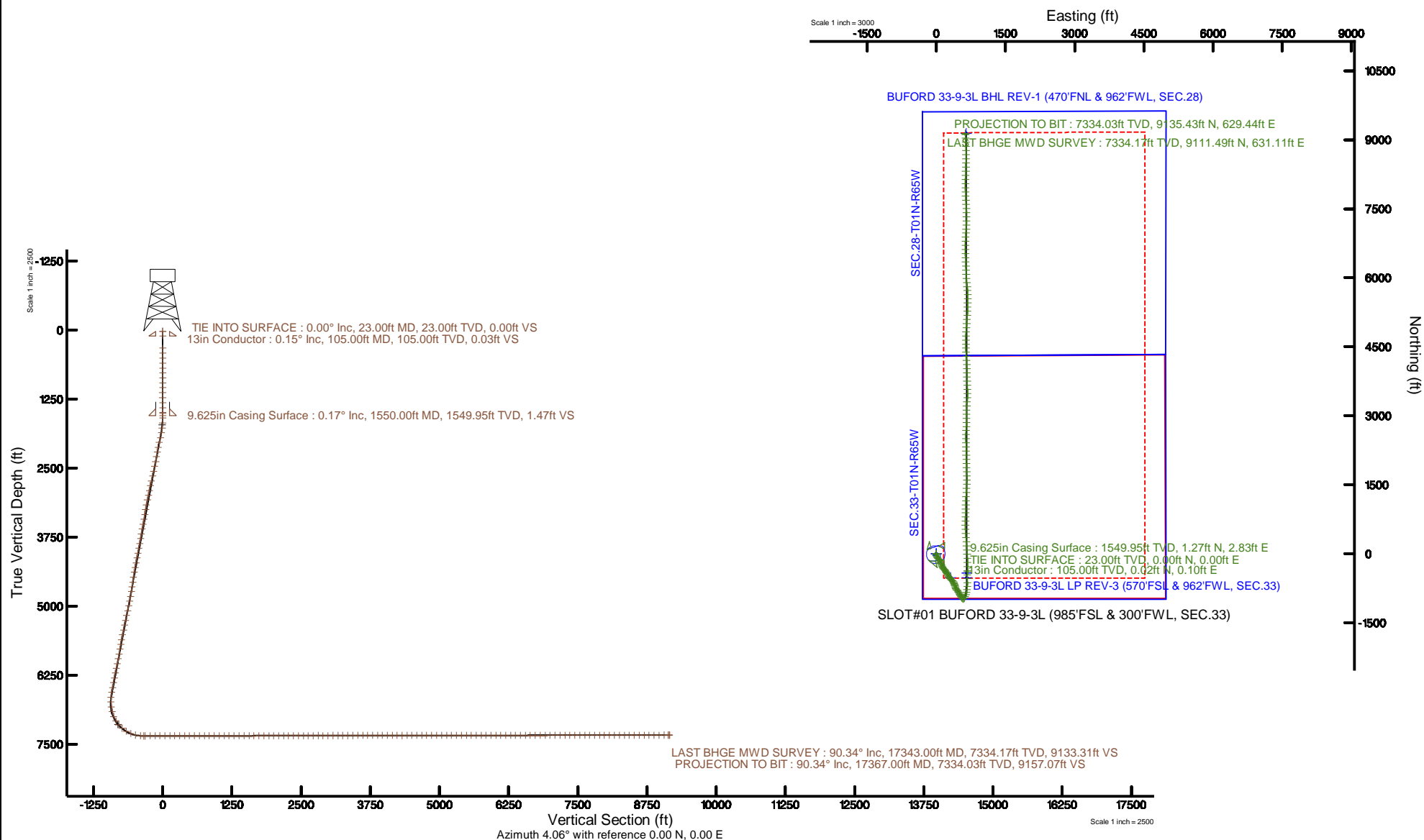


**BAKER  
HUGHES**  
a GE company

Plot reference wellpath is BUFORD 33-9-3L PWP (REV-B.0)	Grid System: NAD83 / Lambert Colorado SP, Northern Zone (501), US feet
True vertical depths are referenced to ENSIGN 160 (23) (RKB)	North Reference: True north
Measured depths are referenced to ENSIGN 160 (23) (RKB)	Scale: True distance
ENSIGN 160 (23) (RKB) to Mean Sea Level: 5100 feet	Depths are in feet
Mean Sea Level to Mud line (At Slot: SLOT#01 BUFORD 33-9-3L (985FSL & 300FWL, SEC.33)): 0 feet	Created by: bensajac on 2017-11-29
Coordinates are in feet referenced to Slot	Database: WA DEN Denver, Defn



# Actual Wellpath Report

BUFORD 33-9-3L AWP

Page 1 of 8



REFERENCE WELLPATH IDENTIFICATION			
Operator	CONFLUENCE RESOURCES	Slot	SLOT#01 BUFORD 33-9-3L (985'FSL & 300'FWL, SEC.33)
Area	COLORADO	Well	BUFORD 33-9-3L
Field	WELD COUNTY (NAD83, TRUE NORTH)	Wellbore	BUFORD 33-9-3L AWB
Facility	SEC.33-T01N-R65W		

REPORT SETUP INFORMATION			
Projection System	NAD83 / Lambert Colorado SP, Northern Zone (501), US feet	Software System	WellArchitect® 5.1
North Reference	True	User	Bensjacj
Scale	0.999966	Report Generated	11/29/2017 at 8:33 AM
Convergence at slot	0.53° East	Database/Source file	WA_DEN_Denver_Defn/BUFORD_33-9-3L_AWP.xml

WELLPATH LOCATION						
	Local coordinates		Grid coordinates		Geographic coordinates	
	North[ft]	East[ft]	Easting[US ft]	Northing[US ft]	Latitude	Longitude
Slot Location	0.00	0.00	3230456.90	1245096.09	40°00'11.664"N	104°40'38.424"W
Facility Reference Pt			3230456.90	1245096.09	40°00'11.664"N	104°40'38.424"W
Field Reference Pt			3230456.90	1245096.09	40°00'11.664"N	104°40'38.424"W

WELLPATH DATUM			
Calculation method	Minimum curvature	ENSIGN 160 (23') (RKB) to Facility Vertical Datum	5100.00ft
Horizontal Reference Pt	Slot	ENSIGN 160 (23') (RKB) to Mean Sea Level	5100.00ft
Vertical Reference Pt	ENSIGN 160 (23') (RKB)	ENSIGN 160 (23') (RKB) to Mud Line at Slot (SLOT#01 BUFORD 33-9-3L (985'FSL & 300'FWL, SEC.33))	5100.00ft
MD Reference Pt	ENSIGN 160 (23') (RKB)	Section Origin	N 0.00, E 0.00 ft
Field Vertical Reference	Mean Sea Level	Section Azimuth	4.06°

# Actual Wellpath Report

BUFORD 33-9-3L AWP

Page 2 of 8



## REFERENCE WELLPATH IDENTIFICATION

Operator	CONFLUENCE RESOURCES	Slot	SLOT#01 BUFORD 33-9-3L (985'FSL & 300'FWL, SEC.33)
Area	COLORADO	Well	BUFORD 33-9-3L
Field	WELD COUNTY (NAD83, TRUE NORTH)	Wellbore	BUFORD 33-9-3L AWP
Facility	SEC.33-T01N-R65W		

## WELLPATH DATA (195 stations)

MD [ft]	Inclination [°]	Azimuth [°]	TVD [ft]	Vert Sect [ft]	North [ft]	East [ft]	DLS [°/100ft]	Comments
23.00	0.000	78.780	23.00	0.00	0.00	0.00	0.00	TIE INTO SURFACE
324.00	0.540	78.780	324.00	0.37	0.28	1.39	0.18	
416.00	0.370	34.780	415.99	0.74	0.60	1.99	0.41	
507.00	0.260	116.660	506.99	0.92	0.75	2.34	0.46	
597.00	0.370	40.640	596.99	1.07	0.88	2.71	0.44	
687.00	0.710	101.860	686.99	1.23	0.99	3.44	0.69	
777.00	0.460	186.330	776.98	0.79	0.51	3.95	0.90	
866.00	0.390	154.630	865.98	0.17	-0.11	4.04	0.27	
955.00	0.290	206.150	954.98	-0.30	-0.59	4.07	0.35	
1044.00	0.440	236.870	1043.98	-0.72	-0.98	3.69	0.27	
1134.00	0.280	201.180	1133.98	-1.13	-1.37	3.32	0.30	
1225.00	0.340	199.900	1224.98	-1.61	-1.83	3.15	0.07	
1314.00	1.200	344.100	1313.97	-0.99	-1.19	2.80	1.67	
1404.00	0.750	0.130	1403.96	0.49	0.31	2.54	0.58	
1494.00	0.410	33.100	1493.95	1.36	1.17	2.72	0.51	
1509.00	0.220	19.390	1508.95	1.43	1.24	2.76	1.35	
1594.00	0.490	157.090	1593.95	1.27	1.06	2.95	0.79	
1683.00	3.890	181.800	1682.87	-2.09	-2.31	3.01	3.88	
1772.00	6.800	184.350	1771.48	-10.38	-10.58	2.51	3.28	
1861.00	11.120	170.590	1859.38	-24.00	-24.31	3.52	5.39	
1950.00	13.480	173.910	1946.33	-42.56	-43.10	6.02	2.77	
2039.00	14.480	162.760	2032.71	-63.14	-64.04	10.42	3.22	
2129.00	14.970	144.210	2119.80	-82.56	-84.23	20.56	5.25	
2218.00	13.840	130.420	2206.03	-97.70	-100.46	35.39	4.05	
2307.00	13.850	138.360	2292.45	-111.45	-115.33	50.57	2.13	
2397.00	13.810	141.620	2379.84	-126.90	-131.80	64.40	0.87	
2487.00	13.670	153.480	2467.29	-143.99	-149.74	75.82	3.13	
2577.00	13.780	163.010	2554.73	-163.15	-169.51	83.70	2.51	
2666.00	13.800	166.290	2641.16	-183.15	-189.96	89.32	0.88	
2756.00	13.910	165.750	2728.54	-203.64	-210.87	94.52	0.19	
2845.00	13.730	157.000	2814.98	-223.21	-230.96	101.28	2.35	
2936.00	13.920	148.060	2903.35	-241.68	-250.19	111.30	2.35	
3025.00	13.410	149.090	2989.83	-258.80	-268.13	122.26	0.63	
3115.00	13.780	155.610	3077.32	-276.77	-286.85	132.05	1.75	
3205.00	14.000	147.170	3164.69	-294.91	-305.76	142.38	2.26	
3294.00	13.030	133.890	3251.25	-309.95	-321.77	155.45	3.64	
3384.00	13.000	135.060	3338.94	-323.09	-335.97	169.91	0.29	
3473.00	12.860	150.500	3425.71	-337.91	-351.68	181.86	3.87	
3563.00	13.110	150.740	3513.40	-354.79	-369.30	191.78	0.28	
3652.00	12.980	145.840	3600.11	-371.07	-386.38	202.33	1.25	
3742.00	12.700	140.030	3687.86	-386.13	-402.32	214.36	1.47	
3832.00	12.020	138.720	3775.78	-399.83	-416.95	226.90	0.82	
3922.00	13.040	153.370	3863.65	-415.15	-433.07	237.63	3.70	
4012.00	12.980	149.680	3951.35	-432.22	-450.87	247.29	0.93	
4101.00	12.960	153.340	4038.08	-449.05	-468.42	256.81	0.92	

# Actual Wellpath Report

BUFORD 33-9-3L AWP

Page 3 of 8



REFERENCE WELLPATH IDENTIFICATION			
Operator	CONFLUENCE RESOURCES	Slot	SLOT#01 BUFORD 33-9-3L (985'FSL & 300'FWL, SEC.33)
Area	COLORADO	Well	BUFORD 33-9-3L
Field	WELD COUNTY (NAD83, TRUE NORTH)	Wellbore	BUFORD 33-9-3L AWP
Facility	SEC.33-T01N-R65W		

WELLPATH DATA (195 stations)								
MD [ft]	Inclination [°]	Azimuth [°]	TVD [ft]	Vert Sect [ft]	North [ft]	East [ft]	DLS [°/100ft]	Comments
4190.00	13.050	153.070	4124.79	-466.24	-486.30	265.84	0.12	
4280.00	12.940	147.240	4212.49	-483.02	-503.83	275.90	1.46	
4369.00	12.960	143.430	4299.23	-498.57	-520.23	287.24	0.96	
4459.00	13.040	143.820	4386.92	-513.98	-536.53	299.24	0.13	
4549.00	13.120	135.170	4474.60	-528.45	-551.97	312.44	2.17	
4639.00	12.950	126.960	4562.29	-540.64	-565.28	327.70	2.06	
4728.00	13.080	133.080	4649.00	-552.40	-578.15	343.02	1.55	
4816.00	13.010	138.650	4734.74	-565.62	-592.39	356.84	1.43	
4905.00	12.990	142.810	4821.46	-580.18	-607.88	369.51	1.05	
4994.00	12.920	151.990	4908.20	-596.13	-624.63	380.23	2.31	
5083.00	13.110	166.090	4994.94	-614.17	-643.22	387.33	3.57	
5172.00	13.160	163.280	5081.61	-633.24	-662.72	392.67	0.72	
5262.00	13.060	163.910	5169.26	-652.37	-682.30	398.44	0.19	
5351.00	12.860	161.320	5256.00	-670.94	-701.35	404.39	0.69	
5441.00	12.960	161.950	5343.72	-689.53	-720.43	410.73	0.19	
5530.00	13.090	162.110	5430.43	-708.12	-739.51	416.92	0.15	
5620.00	13.340	157.810	5518.05	-726.89	-758.83	423.97	1.13	
5709.00	13.500	137.570	5604.67	-743.25	-776.01	434.86	5.26	
5799.00	13.340	139.960	5692.21	-757.94	-791.71	448.63	0.64	
5888.00	13.540	139.740	5778.78	-772.77	-807.52	461.97	0.23	
5977.00	13.480	140.520	5865.31	-787.74	-823.48	475.30	0.22	
6066.00	13.570	147.290	5951.85	-803.63	-840.27	487.53	1.78	
6155.00	13.430	148.530	6038.39	-820.40	-857.88	498.57	0.36	
6244.00	13.400	148.060	6124.96	-837.15	-875.44	509.42	0.13	
6334.00	13.490	156.560	6212.50	-854.90	-893.92	519.12	2.20	
6423.00	13.160	155.130	6299.11	-872.98	-912.64	527.51	0.52	
6512.00	13.090	150.080	6385.79	-890.20	-930.57	536.80	1.29	
6602.00	13.110	146.430	6473.45	-906.74	-947.91	547.52	0.92	
6692.00	13.110	142.580	6561.10	-922.47	-964.52	559.37	0.97	
6781.00	11.190	123.690	6648.14	-934.31	-977.33	572.70	4.93	
6870.00	8.290	62.060	6736.06	-935.18	-979.12	585.58	11.52	
6960.00	8.930	55.130	6825.05	-927.35	-972.09	597.05	1.35	
7050.00	15.310	32.590	6913.04	-912.50	-958.06	609.20	8.70	
7140.00	24.100	23.160	6997.71	-884.63	-931.09	622.85	10.36	
7230.00	32.290	19.840	7076.97	-844.06	-891.52	638.27	9.26	
7320.00	39.940	14.700	7149.64	-792.45	-840.88	653.78	9.14	
7409.00	49.860	7.610	7212.64	-730.22	-779.33	665.57	12.47	
7499.00	58.440	3.090	7265.32	-657.39	-706.78	672.21	10.36	
7589.00	66.940	359.340	7306.59	-577.62	-626.92	673.81	10.14	
7679.00	76.830	358.970	7334.54	-492.50	-541.50	672.54	11.00	
7768.00	85.410	1.960	7348.26	-404.83	-453.66	673.28	10.19	
7832.00	90.090	2.550	7350.78	-340.93	-389.78	675.79	7.37	
7858.00	90.310	1.380	7350.69	-314.95	-363.80	676.69	4.58	
7947.00	90.340	359.480	7350.18	-226.13	-274.80	677.35	2.14	
8036.00	90.490	359.240	7349.54	-137.43	-185.81	676.36	0.32	

# Actual Wellpath Report

BUFORD 33-9-3L AWP

Page 4 of 8



## REFERENCE WELLPATH IDENTIFICATION

Operator	CONFLUENCE RESOURCES	Slot	SLOT#01 BUFORD 33-9-3L (985'FSL & 300'FWL, SEC.33)
Area	COLORADO	Well	BUFORD 33-9-3L
Field	WELD COUNTY (NAD83, TRUE NORTH)	Wellbore	BUFORD 33-9-3L AWP
Facility	SEC.33-T01N-R65W		

## WELLPATH DATA (195 stations)

MD [ft]	Inclination [°]	Azimuth [°]	TVD [ft]	Vert Sect [ft]	North [ft]	East [ft]	DLS [°/100ft]	Comments
8126.00	90.030	357.430	7349.13	-47.89	-95.86	673.74	2.08	
8215.00	90.000	356.230	7349.10	40.40	-6.99	668.82	1.35	
8305.00	90.030	357.280	7349.08	129.67	82.86	663.73	1.17	
8394.00	90.030	355.510	7349.03	217.87	171.68	658.13	1.99	
8483.00	90.060	355.320	7348.96	305.86	260.40	651.02	0.22	
8573.00	90.180	356.010	7348.78	394.90	350.14	644.21	0.78	
8663.00	89.970	355.990	7348.66	484.01	439.92	637.94	0.23	
8752.00	90.000	355.840	7348.68	572.11	528.69	631.60	0.17	
8842.00	89.910	1.140	7348.75	661.65	618.63	629.23	5.89	
8932.00	89.780	0.840	7349.00	751.52	708.62	630.78	0.36	
9022.00	89.780	2.650	7349.34	841.44	798.57	633.52	2.01	
9111.00	89.910	2.300	7349.58	930.41	887.49	637.36	0.42	
9201.00	89.880	359.270	7349.75	1020.25	977.47	638.60	3.37	
9291.00	90.280	0.480	7349.62	1110.01	1067.47	638.40	1.42	
9380.00	90.280	1.540	7349.19	1198.88	1156.45	639.97	1.19	
9470.00	90.310	3.420	7348.72	1288.84	1246.36	643.86	2.09	
9560.00	90.250	4.430	7348.28	1378.84	1336.15	650.02	1.12	
9650.00	90.280	4.230	7347.87	1468.84	1425.89	656.82	0.22	
9740.00	90.340	2.830	7347.38	1558.83	1515.71	662.36	1.56	
9830.00	90.340	1.070	7346.85	1648.76	1605.66	665.42	1.96	
9920.00	90.340	357.500	7346.31	1738.43	1695.63	664.30	3.97	
10010.00	90.180	357.880	7345.90	1827.88	1785.56	660.67	0.46	
10099.00	90.120	357.220	7345.67	1916.30	1874.48	656.87	0.74	
10189.00	90.280	357.990	7345.36	2005.73	1964.40	653.11	0.87	
10278.00	90.280	358.780	7344.92	2094.29	2053.36	650.60	0.89	
10368.00	90.180	359.230	7344.56	2183.94	2143.35	649.04	0.51	
10457.00	90.280	358.880	7344.20	2272.60	2232.33	647.57	0.41	
10547.00	90.220	359.270	7343.81	2362.26	2322.32	646.12	0.44	
10636.00	90.340	358.490	7343.37	2450.89	2411.30	644.38	0.89	
10726.00	89.940	357.870	7343.15	2540.42	2501.25	641.52	0.82	
10815.00	90.060	2.370	7343.15	2629.18	2590.23	641.70	5.06	
10904.00	90.030	4.490	7343.08	2718.17	2679.07	647.03	2.38	
10993.00	90.000	3.840	7343.06	2807.17	2767.83	653.49	0.73	
11082.00	89.940	359.840	7343.11	2896.09	2856.77	656.35	4.49	
11172.00	90.030	359.030	7343.13	2985.79	2946.76	655.46	0.91	
11262.00	90.150	359.780	7342.99	3075.49	3036.76	654.53	0.84	
11351.00	90.030	0.550	7342.85	3164.29	3125.76	654.78	0.88	
11441.00	90.150	4.390	7342.71	3254.24	3215.66	658.66	4.27	
11532.00	90.180	6.670	7342.45	3345.20	3306.23	667.43	2.51	
11622.00	90.150	2.550	7342.19	3435.18	3395.91	674.66	4.58	
11711.00	90.280	358.660	7341.85	3524.00	3484.89	675.60	4.37	
11801.00	90.400	358.920	7341.32	3613.61	3574.87	673.70	0.32	
11891.00	89.880	358.550	7341.10	3703.22	3664.85	671.71	0.71	
11981.00	89.820	358.110	7341.33	3792.77	3754.81	669.09	0.49	
12070.00	89.970	359.420	7341.50	3881.39	3843.79	667.17	1.48	

# Actual Wellpath Report

BUFORD 33-9-3L AWP

Page 5 of 8



REFERENCE WELLPATH IDENTIFICATION			
Operator	CONFLUENCE RESOURCES	Slot	SLOT#01 BUFORD 33-9-3L (985'FSL & 300'FWL, SEC.33)
Area	COLORADO	Well	BUFORD 33-9-3L
Field	WELD COUNTY (NAD83, TRUE NORTH)	Wellbore	BUFORD 33-9-3L AWP
Facility	SEC.33-T01N-R65W		

## WELLPATH DATA (195 stations)

MD [ft]	Inclination [°]	Azimuth [°]	TVD [ft]	Vert Sect [ft]	North [ft]	East [ft]	DLS [°/100ft]	Comments
12160.00	89.940	359.190	7341.57	3971.08	3933.78	666.08	0.26	
12249.00	89.910	357.910	7341.69	4059.67	4022.75	663.83	1.44	
12338.00	90.000	357.010	7341.76	4148.08	4111.66	659.89	1.02	
12427.00	89.880	356.580	7341.85	4236.36	4200.52	654.91	0.50	
12517.00	89.940	356.560	7341.99	4325.59	4290.36	649.53	0.07	
12606.00	90.250	357.640	7341.84	4413.94	4379.24	645.02	1.26	
12696.00	90.280	358.630	7341.43	4503.45	4469.19	642.09	1.10	
12785.00	90.340	359.670	7340.94	4592.12	4558.18	640.77	1.17	
12874.00	90.150	0.630	7340.56	4680.91	4647.18	641.01	1.10	
12963.00	90.220	1.100	7340.28	4769.77	4736.17	642.35	0.53	
13053.00	90.120	3.470	7340.01	4859.72	4826.09	645.94	2.64	
13143.00	90.060	3.860	7339.87	4949.72	4915.91	651.69	0.44	
13232.00	90.000	4.190	7339.82	5038.72	5004.69	657.94	0.38	
13322.00	90.060	5.260	7339.77	5128.71	5094.38	665.35	1.19	
13411.00	89.850	3.670	7339.84	5217.71	5183.11	672.28	1.80	
13501.00	89.780	0.720	7340.13	5307.65	5273.03	675.73	3.28	
13591.00	90.000	1.240	7340.31	5397.52	5363.02	677.27	0.63	
13680.00	90.060	0.280	7340.26	5486.37	5452.01	678.45	1.08	
13769.00	90.090	2.110	7340.14	5575.26	5540.98	680.30	2.06	
13858.00	89.910	359.060	7340.14	5664.08	5629.97	681.21	3.43	
13948.00	89.940	355.560	7340.26	5753.44	5719.86	676.99	3.89	
14037.00	89.940	353.630	7340.36	5841.23	5808.46	668.60	2.17	
14126.00	90.000	354.680	7340.40	5928.90	5896.99	659.54	1.18	
14217.00	90.060	356.530	7340.35	6018.91	5987.72	652.57	2.03	
14306.00	89.970	358.270	7340.33	6107.30	6076.62	648.53	1.96	
14395.00	89.940	357.490	7340.40	6195.78	6165.56	645.24	0.88	
14485.00	90.310	357.220	7340.20	6285.17	6255.47	641.09	0.51	
14574.00	90.280	357.930	7339.75	6373.59	6344.39	637.32	0.80	
14664.00	90.150	358.420	7339.41	6463.12	6434.34	634.45	0.56	
14753.00	90.310	359.250	7339.05	6551.75	6523.32	632.64	0.95	
14842.00	90.060	359.570	7338.76	6640.45	6612.31	631.73	0.46	
14932.00	90.060	0.490	7338.67	6730.23	6702.31	631.77	1.02	
15021.00	90.090	1.550	7338.55	6819.10	6791.30	633.36	1.19	
15111.00	90.120	3.590	7338.39	6909.07	6881.20	637.39	2.27	
15200.00	90.180	4.050	7338.16	6998.07	6970.00	643.32	0.52	
15290.00	90.250	3.020	7337.82	7088.06	7059.83	648.87	1.15	
15380.00	90.250	2.550	7337.42	7178.04	7149.72	653.25	0.52	
15470.00	90.280	1.700	7337.01	7267.98	7239.66	656.58	0.95	
15559.00	90.430	359.810	7336.46	7356.83	7328.65	657.76	2.13	
15649.00	90.090	357.620	7336.05	7446.43	7418.62	655.74	2.46	
15739.00	90.150	357.340	7335.86	7535.84	7508.53	651.78	0.32	
15829.00	89.880	356.550	7335.84	7625.14	7598.40	646.98	0.93	
15919.00	89.910	356.800	7336.00	7714.40	7688.25	641.76	0.28	
16008.00	90.000	357.320	7336.07	7802.73	7777.13	637.20	0.59	
16098.00	90.000	358.530	7336.07	7892.21	7867.07	633.94	1.34	



# Actual Wellpath Report

BUFORD 33-9-3L AWP

Page 6 of 8



REFERENCE WELLPATH IDENTIFICATION			
Operator	CONFLUENCE RESOURCES	Slot	SLOT#01 BUFORD 33-9-3L (985'FSL & 300'FWL, SEC.33)
Area	COLORADO	Well	BUFORD 33-9-3L
Field	WELD COUNTY (NAD83, TRUE NORTH)	Wellbore	BUFORD 33-9-3L AWP
Facility	SEC.33-T01N-R65W		

WELLPATH DATA (195 stations)								
MD [ft]	Inclination [°]	Azimuth [°]	TVD [ft]	Vert Sect [ft]	North [ft]	East [ft]	DLS [°/100ft]	Comments
16187.00	89.970	359.320	7336.09	7980.86	7956.05	632.27	0.89	
16277.00	90.030	0.270	7336.09	8070.61	8046.05	631.95	1.06	
16367.00	90.000	0.980	7336.07	8160.44	8136.05	632.93	0.79	
16457.00	90.030	2.390	7336.05	8250.36	8226.01	635.58	1.57	
16547.00	89.880	1.880	7336.12	8340.31	8315.94	638.93	0.59	
16636.00	90.060	1.560	7336.17	8429.24	8404.90	641.60	0.41	
16725.00	90.000	1.490	7336.12	8518.15	8493.87	643.97	0.10	
16815.00	90.030	1.170	7336.09	8608.05	8583.85	646.06	0.36	
16905.00	89.940	359.650	7336.12	8697.86	8673.84	646.70	1.69	
16995.00	90.120	358.800	7336.07	8787.54	8763.83	645.49	0.97	
17084.00	90.340	358.280	7335.71	8876.13	8852.80	643.22	0.63	
17174.00	90.400	358.090	7335.13	8965.65	8942.76	640.37	0.22	
17264.00	90.280	356.610	7334.60	9055.03	9032.66	636.21	1.65	
17343.00	90.340	356.000	7334.17	9133.31	9111.49	631.11	0.78	LAST BHGE MWD SURVEY
17367.00	90.340	356.000	7334.03	9157.07	9135.43	629.44	0.00	PROJECTION TO BIT

HOLE & CASING SECTIONS - Ref Wellbore: BUFORD 33-9-3L AWP      Ref Wellpath: BUFORD 33-9-3L AWP									
String/Diameter	Start MD [ft]	End MD [ft]	Interval [ft]	Start TVD [ft]	End TVD [ft]	Start N/S [ft]	Start E/W [ft]	End N/S [ft]	End E/W [ft]
13in Conductor	23.00	105.00	82.00	23.00	105.00	0.00	0.00	0.02	0.10
12.25in Open Hole	105.00	1565.00	1460.00	105.00	1564.95	0.02	0.10	1.23	2.87
9.625in Casing Surface	23.00	1550.00	1527.00	23.00	1549.95	0.00	0.00	1.27	2.83
8.5in Open Hole	1565.00	17367.00	15802.00	1564.95	7334.03	1.23	2.87	9135.43	629.44

# Actual Wellpath Report

BUFORD 33-9-3L AWP

Page 7 of 8



REFERENCE WELLPATH IDENTIFICATION				
Operator	CONFLUENCE RESOURCES	Slot	SLOT#01 BUFORD 33-9-3L (985'FSL & 300'FWL, SEC.33)	
Area	COLORADO	Well	BUFORD 33-9-3L	
Field	WELD COUNTY (NAD83, TRUE NORTH)	Wellbore	BUFORD 33-9-3L AWB	
Facility	SEC.33-T01N-R65W			

TARGETS								
Name	TVD [ft]	North [ft]	East [ft]	Grid East [US ft]	Grid North [US ft]	Latitude	Longitude	Shape
SEC.28-T01N-R65W	0.00	0.00	0.00	3230456.90	1245096.09	40°00'11.664"N	104°40'38.424"W	polygon
SEC.33-T01N-R65W	5.00	0.00	0.00	3230456.90	1245096.09	40°00'11.664"N	104°40'38.424"W	polygon
460' SETBACKS	7334.00	0.00	0.00	3230456.90	1245096.09	40°00'11.664"N	104°40'38.424"W	polygon
BUFORD 33-9-3L BHL ON PLAT (470'FNL & 610'FWL, SEC.28)	7334.00	9136.33	296.85	3230668.97	1254234.46	40°01'41.952"N	104°40'34.608"W	point
BUFORD 33-9-3L BHL REV-1 (470'FNL & 962'FWL, SEC.28)	7334.00	9136.33	648.85	3231020.94	1254237.72	40°01'41.952"N	104°40'30.083"W	point
BUFORD 33-9-3L LP ON PLAT (470'FSL & 610'FWL, SEC.33)	7340.00	-513.64	310.97	3230772.61	1244585.37	40°00'06.588"N	104°40'34.428"W	point
BUFORD 33-9-3L LP REV-1 (470'FSL & 962'FWL, SEC.33)	7340.00	-513.64	662.97	3231124.58	1244588.64	40°00'06.588"N	104°40'29.905"W	point
BUFORD 33-9-3L LP REV-2 (570'FSL & 962'FWL, SEC.33)	7340.00	-413.64	662.97	3231123.66	1244688.63	40°00'07.576"N	104°40'29.905"W	point
BUFORD 33-9-3L LP REV-3 (570'FSL & 962'FWL, SEC.33)	7350.00	-413.64	662.97	3231123.66	1244688.63	40°00'07.576"N	104°40'29.905"W	point

WELLPATH COMPOSITION - Ref Wellbore: BUFORD 33-9-3L AWB					Ref Wellpath: BUFORD 33-9-3L AWP	
Start MD [ft]	End MD [ft]	Positional Uncertainty Model	Log Name/Comment		Wellbore	
23.00	1509.00	BHI NaviTrak (Rotating+Axial Corr)	BHI NAVITRAK SURVEYS <324'-1509'>		BUFORD 33-9-3L AWB	
1509.00	17343.00	BHI NaviTrak (Standard)	BHI NAVITRAK SURVEYS <1594'-17343'>		BUFORD 33-9-3L AWB	
17343.00	17367.00	Blind Drilling (std)	Projection to bit		BUFORD 33-9-3L AWB	



# Actual Wellpath Report

BUFORD 33-9-3L AWP

Page 8 of 8



## REFERENCE WELLPATH IDENTIFICATION

Operator	CONFLUENCE RESOURCES	Slot	SLOT#01 BUFORD 33-9-3L (985'FSL & 300'FWL, SEC.33)
Area	COLORADO	Well	BUFORD 33-9-3L
Field	WELD COUNTY (NAD83, TRUE NORTH)	Wellbore	BUFORD 33-9-3L AWB
Facility	SEC.33-T01N-R65W		

## WELLPATH COMMENTS

MD [ft]	Inclination [°]	Azimuth [°]	TVD [ft]	Comment
23.00	0.000	78.780	23.00	TIE INTO SURFACE
17343.00	90.340	356.000	7334.17	LAST BHGE MWD SURVEY
17367.00	90.340	356.000	7334.03	PROJECTION TO BIT