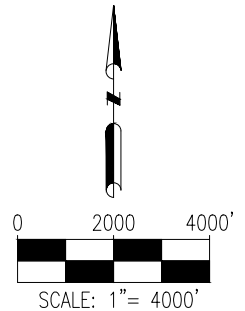
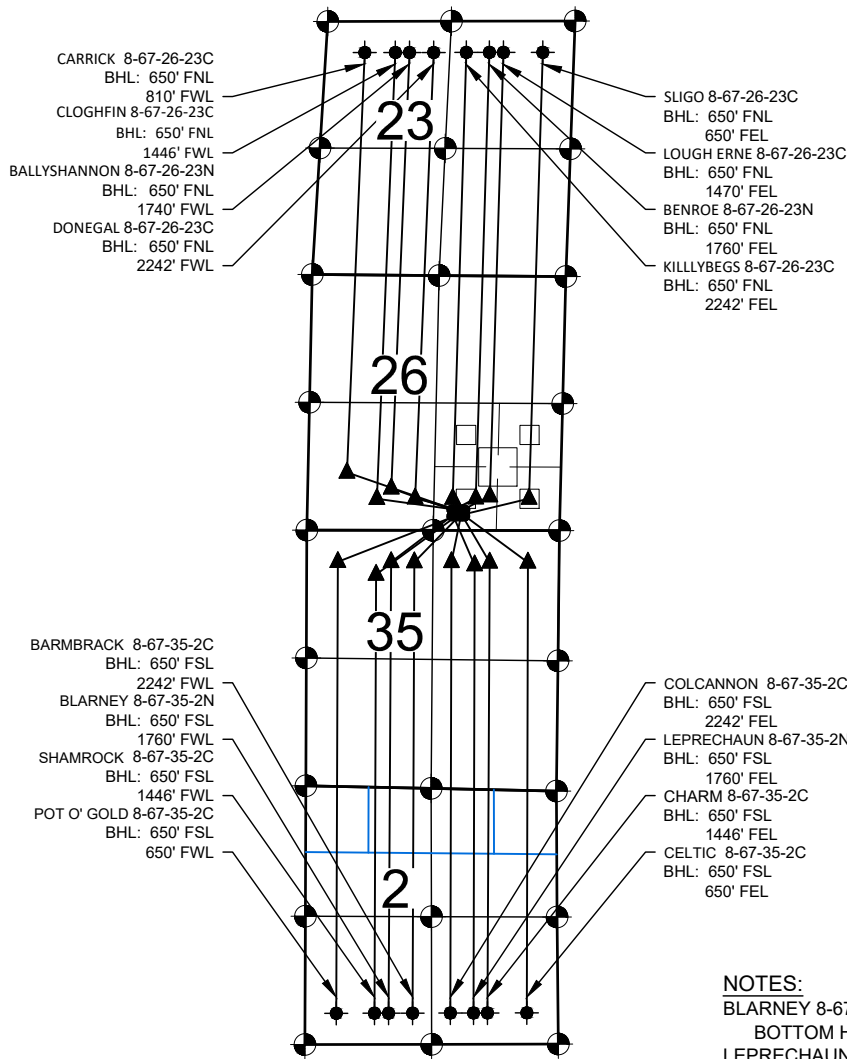


IRISH PAD MULTI-WELL PLAN



LEGEND

- = EXISTING MONUMENT ◆ = BOTTOM HOLE
- = CALCULATED POSITION ▲ = LANDING POINT
- = PROPOSED WELL LP = LANDING POINT
- ◆ = EXISTING WELL BHL = BOTTOM HOLE LOCATION

NOTES:

1. THIS FIELD SURVEY CONFORMS TO THE MINIMUM STANDARDS SET BY THE C.O.G.C.C., RULE NO. 215
2. BEARINGS ARE BASED ON THE ASSUMPTION THAT THE SOUTH LINE OF THE SOUTHEAST QUARTER OF SECTION 26, BEARS N89°51'23"W BETWEEN THE MONUMENTS SHOWN HEREON.
3. ALL DISTANCES AND BEARINGS SHOWN HEREON ARE GROUND VALUES AS GPS MEASURED IN THE FIELD, WITH TIES TO WELLS MEASURED PERPENDICULAR TO SECTION LINES. THIS LOW DISTORTION PROJECTION (LDP) IS BASED ON THE NORTH AMERICAN DATUM OF 1983, U.S. SURVEY FOOT WITH A LATITUDE ORIGIN OF 40.654362°N AND A LONGITUDE OF 104.887025°W AND A SCALE FACTOR ON THE CENTRAL MERIDIAN OF 1.000253(EXACT). THE LDP BASIS OF BEARINGS IS GEODETIC NORTH.
4. FIELD VERIFICATION OF MONUMENTS COMPLETED WITHIN 1 YEAR OF SIGNATURE DATE.

NOTES:

- BLARNEY 8-67-35-2N TO BE AT 299' FSL & 2251' FEL.
BOTTOM HOLE AT 650' FSL & 1760' FWL, SEC. 2.
- LEPRECHAUN 8-67-35-2N TO BE AT 299' FSL & 2216' FEL.
BOTTOM HOLE AT 650' FSL & 1760' FEL, SEC. 2.
- POT O' GOLD 8-67-35-2C TO BE AT 299' FSL & 2181' FEL.
BOTTOM HOLE AT 650' FSL & 650' FWL, SEC. 2.
- SHAMROCK 8-67-35-2C TO BE AT 429' FSL & 1979' FEL.
BOTTOM HOLE AT 650' FSL & 1446' FWL, SEC. 2.
- BARMBRACK 8-67-35-2C TO BE AT 299' FSL & 2096' FEL.
BOTTOM HOLE AT 650' FSL & 2242' FWL, SEC. 2.
- COLCANNON 8-67-35-2C TO BE AT 299' FSL & 2061' FEL.
BOTTOM HOLE AT 650' FSL & 2242' FEL, SEC. 2.
- CHARM 8-67-35-2C TO BE AT 299' FSL & 2026' FEL.
BOTTOM HOLE AT 650' FSL & 1446' FEL, SEC. 2.
- CELTIC 8-67-35-2C TO BE AT 299' FSL & 1976' FEL.
BOTTOM HOLE AT 650' FSL & 650' FEL, SEC. 2.
- BALLYSHANNON 8-67-26-23N TO BE AT 429' FSL & 2254' FEL.
BOTTOM HOLE AT 650' FNL & 1740' FWL, SEC. 23.
- BENROE 8-67-26-23N TO BE AT 429' FSL & 2219' FEL.
BOTTOM HOLE AT 650' FNL & 1760' FEL, SEC. 23.
- CARRICK 8-67-26-23C TO BE AT 429' FSL & 2184' FEL.
BOTTOM HOLE AT 650' FNL & 810' FWL, SEC. 23.
- CLOGHFIN 8-67-26-23C TO BE AT 429' FSL & 2149' FEL.
BOTTOM HOLE AT 650' FNL & 1446' FWL, SEC. 23.
- DONEGAL 8-67-26-23C TO BE AT 429' FSL & 2099' FEL.
BOTTOM HOLE AT 650' FNL & 2242' FWL, SEC. 23.
- KILLYBEGS 8-67-26-23C TO BE AT 429' FSL & 2064' FEL.
BOTTOM HOLE AT 650' FNL & 2242' FEL, SEC. 23.
- LOUGH ERNE 8-67-26-23C TO BE AT 429' FSL & 2029' FEL.
BOTTOM HOLE AT 650' FNL & 1470' FEL, SEC. 23.
- SLIGO 8-67-26-23C TO BE AT 299' FSL & 2146' FEL.
BOTTOM HOLE AT 650' FNL & 650' FEL, SEC. 23.