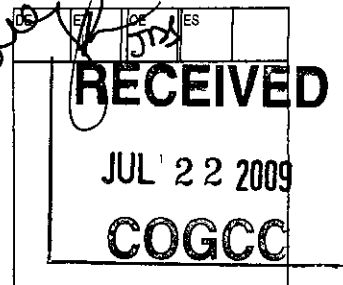


State of Colorado  
Oil and Gas Conservation Commission

1120 Lincoln Street, Suite 801, Denver, Colorado 80203 Phone: (303)894-2100 Fax: (303)894-2109



DRILLING COMPLETION REPORT

This form is to be submitted within 30 days of the setting of production casing, the plugging of dry hole, the deepening or sidetracking of a well, or any time the wellbore configuration is changed. If the well is deepened or sidetracked a new Form 5 is required. If an attempt has been made to complete/produce a well, then the operator shall submit Form 5A (Completed Interval Report.) If the well has been plugged, a form 6 (Well Abandonment Report) is required.

1. OGCC Operator Number: 47120  
 2. Name of Operator: Kerr McGee Oil & Gas Onshore LP  
 3. Address: 1099 18th Street  
 City: Denver State: CO Zip: 80202  
 4. Contact name: Michael Nagel  
 Phone: 720-929-6145  
 Fax: 720-929-7145  
 5. API Number: 05-123-30385  
 6. County: WELD  
 7. Well Name: WEICHEL Well Number: 14-14  
 8. Location (QtrQtr, Sec, Twp, Rng, Meridian): SWSW 14-2N-65W 6th PM  
 Footage at surface: 1049 FSL 1061 FWL  
 As Drilled Latitude: \_\_\_\_\_ As Drilled Longitude: \_\_\_\_\_  
 GPS Data: ORDERED Date of measurement: \_\_\_\_\_  
 PDOP Reading: \_\_\_\_\_ GPS Instrument Operator's Name: \_\_\_\_\_  
 \*\* If directional, Footage at Top of Prod. Zone:  
 669 FSL 1977 FWL Sec, Twp, Rng: 14-2N-65W  
 \*\* If directional, Footage at Bottom Hole:  
 682 FSL 1974 FWL Sec, Twp, Rng: 14-2N-65W  
 9. Field Name: WATTENBERG 10. Field Number: 90750  
 11. Federal, Indian or State Lease Number: \_\_\_\_\_  
 12. Spud Date: (1st bit hit the dirt) 6/7/2009 13. Date TD: 6/10/2009 14. Date Casing Set or D&A: 06/11/2009  
 16. Total Depth MD 7877 ft TVD 7760 ft 17. Plug Back Total Depth MD 7829 ft TVD 7713 ft  
 18. Elevations GR 4883 ft KB 4900 ft  
 One paper copy of all electric and mud logs must be submitted along with one digital LAS copy as available.  
 19. List Electric Logs Run: P/E AILC-CNLD-ML, CBL

Complete the Attachment Checklist

	Op	OGCC
Logs	X	
Directional Survey**	X	1786625
DST Analysis		
Core Analysis		
Cmt Summary S*	X	
Cmt Summary P	X	

15. Well Classification  
 Dry  Oil  Gas  
 Coaled  Disposal  
 Stratigraphic  
 Enhanced Recovery  
 Gas Storage  
 Observation  
 Other: SEE COMMENTS

20.

CASING, LINER and CEMENT

If Cement Bond Log was not run, submit contractor's cement job summary for each string cemented

String	Hole Size	Csg/Liner Size	Csg/Liner Top	Csg/Tool Setting Depth	Number of sacks cmt	Cement Top	Cement Bottom	CBL*	Calculated*
SURFACE CASING	12-1/4	8-5/8	0	865	340	0	865		✓
PRODUCTION CASING	7-7/8	4-1/2	0	7867	800	1100	7867	✓	✓
Stage, Squeeze, Remedial Cement Job									
Stage, Squeeze, Remedial Cement Job									

21.

FORMATION LOG INTERVALS AND TEST ZONES

FORMATION NAME	Measured Depth		Check if applies	
	Top	Bottom	DST	Cored
PARKMAN	4113	4196		
SUSSEX	4364	4658		
NIORRARA	6975			
FT HAYS	7247			
CODELL	7270			
J SAND	7727			

All DST and Core Analysis must be submitted to COGCC.

COMMENTS

WELL CLASSIFICATION PROVIDED WITH INTERVAL COMPLETION REPORT

SEE NEXT PAGE FOR SIGNATURE

FORM  
5  
Rev 12/05

State of Colorado  
Oil and Gas Conservation Commission



1120 Lincoln Street, Suite 801, Denver, Colorado 80203 Phone: (303)894-2100 Fax: (303)894-2109

DRILLING COMPLETION REPORT

DE	ET	OE	ES
<b>RECEIVED</b>			
JUL 22 2009			
<b>COGCC</b>			

This form is to be submitted within 30 days of the setting of production casing, the plugging of dry hole, the deepening or sidetracking of a well, or any time the wellbore configuration is changed. If the well is deepened or sidetracked a new Form 5 is required. If an attempt has been made to complete/produce a well, then the operator shall submit Form 5A (Completed Interval Report.) If the well has been plugged, a form 6 (Well Abandonment Report) is required.

I hereby certify that the statements made in this form are, to the best of my knowledge, true, correct, and complete.

Print Name: Michael Nagel E-mail: Michael.Nagel@anadarko.com  
Signature: *Michael Nagel* Title: Regulatory Analyst II Date: 7/22/2009

**HALLIBURTON**

**RECEIVED**

JUL ' 2 2 2009

**COGCC**

---

**ANADARKO PETROLEUM CORP EBUSINESS**

---

Weichel 14-14  
DJ  
Weld County , Colorado

**Cement Multiple Stages**

11-Jun-2009

**Job Site Documents**

# HALLIBURTON

# Cementing Job Summary

The Road to Excellence Starts with Safety

Sold To #: 300466	Ship To #: 2730295	Quote #:	Sales Order #: 6721173
Customer: ANADARKO PETROLEUM CORP EBUSINESS		Customer Rep: JONES, CRAIG	
Well Name: Weichel	Well #: 14-14	API/UWI #: #05-123-30385	
Field: DJ	City (SAP): HUDSON	County/Parish: Weld	State: Colorado
Contractor: EXTREME		Rig/Platform Name/Num: # 8	
Job Purpose: Cement Multiple Stages			
Well Type: Development Well		Job Type: Cement Multiple Stages	
Sales Person: FLING, MATTHEW		Srvc Supervisor: COLLINS, IRVIN	MBU ID Emp #: 401749

### Job Personnel

HES Emp Name	Exp Hrs	Emp #	HES Emp Name	Exp Hrs	Emp #	HES Emp Name	Exp Hrs	Emp #
AMOAKOH, SYLVESTER	9.0	338347	COLLINS, IRVIN Douglas	9.0	401749	KELEHER, JASON E	9.0	437348
MCPHERSON, MATTHEW L	9.0	455378	SANFORD, DALE A	9.0	219527			

### Equipment

HES Unit #	Distance-1 way	HES Unit #	Distance-1 way	HES Unit #	Distance-1 way	HES Unit #	Distance-1 way
10679720C	21 mile	10759930C	21 mile	10857012C	21 mile	10866497C	21 mile
10948696	21 mile	11019275C	21 mile	11019824C	21 mile	11064046C	21 mile
11142998	21 mile						

### Job Hours

Date	On Location Hours	Operating Hours	Date	On Location Hours	Operating Hours	Date	On Location Hours	Operating Hours
06-11-09	9.0	2.5						
<b>TOTAL</b>			<i>Total is the sum of each column separately</i>					

### Job

### Job Times

Formation Name	Formation Depth (MD) Top	Bottom	Called Out	Date	Time	Time Zone
Form Type		BHST	On Location	11 - Jun - 2009	10:00	MST
Job depth MD	7862.4 ft	Job Depth TVD	Job Started	11 - Jun - 2009	13:30	MST
Water Depth		Wk Ht Above Floor	Job Completed	11 - Jun - 2009	15:16	MST
Perforation Depth (MD) From		To	Departed Loc	11 - Jun - 2009	21:24	MST
					22:30	MST

### Well Data

Description	New / Used	Max pressure psig	Size in	ID in	Weight lbm/ft	Thread	Grade	Top MD ft	Bottom MD ft	Top TVD ft	Bottom TVD ft
Multiple Stage Cementer	Unknown							5161.7	5161.7		
Open Hole				7.875				750.	7877.		7877.
Production Casing	Unknown		4.5	4.	11.6				7862.6		7862.6
Surface Casing	Unknown		8.625	8.097	24.		J-55	750.			

### Tools and Accessories

Type	Size	Qty	Make	Depth	Type	Size	Qty	Make	Depth	Type	Size	Qty	Make
Guide Shoe					Packer					Top Plug			
Float Shoe					Bridge Plug					Bottom Plug			
Float Collar					Retainer					SSR plug set			
Insert Float										Plug Container			
Stage Tool										Centralizers			

### Miscellaneous Materials

Gelling Agt	Conc	Surfactant	Conc	Acid Type	Qty	Conc	%
Treatment Fld	Conc	Inhibitor	Conc	Sand Type	Size	Qty	

# HALLIBURTON

# Cementing Job Summary

Fluid Data									
Stage/Plug #: 1									
Fluid #	Stage Type	Fluid Name	Qty	Qty uom	Mixing Density lbm/gal	Yield ft <sup>3</sup> /sk	Mix Fluid Gal/sk	Rate bbl/min	Total Mix Fluid Gal/sk
1	Water Spacer		5.00	bbl	8.33	.0	.0	5.0	
2	SD SPACER	SD SPACER: 10.5 PPG - SBM (133235)	20.00	bbl	10.5	.0	.0	5.0	
		35.2 gal/bbl FRESH WATER							
		132 lbm/bbl SAND-SSA-1 - SILICA FLOUR - 200 MESH, BULK (100003691)							
3	Water Spacer		5.00	bbl	8.33	.0	.0	5.0	
4	1st Stage Cement 13.5#	FRACCEM (TM) SYSTEM (452963)	225.0	sacks	13.5	1.7	8.16	5.0	8.16
		8.18 Gal FRESH WATER							
5	Water Displacement		121.00	bbl	8.33	.0	.0	.0	
Stage/Plug #: 2									
Fluid #	Stage Type	Fluid Name	Qty	Qty uom	Mixing Density uom	Yield uom	Mix Fluid uom	Rate uom	Total Mix Fluid uom
1	Water Spacer		5.00	bbl	8.33	.0	.0	5.0	
2	SD SPACER	SD SPACER: 10.5 PPG - SBM (133235)	20.00	bbl	10.5	.0	.0	5.0	
		35.2 gal/bbl FRESH WATER							
		132 lbm/bbl SAND-SSA-1 - SILICA FLOUR - 200 MESH, BULK (100003691)							
3	Water Spacer		5.00	bbl	8.33	.0	.0	5.0	
4	2nd Stage Lead 12.5#	ECONOCEM (TM) SYSTEM (452992)	525.0	sacks	12.5	1.96	10.7	7.0	10.7
		10.696 Gal FRESH WATER							
5	2nd Stage Tail 15.8#	CMT - PREMIUM - CLASS G, 94 LB SK (100003685)	50.0	sacks	15.79	1.15	5.0	5.0	5.0
		94 lbm CMT - PREMIUM - CLASS G REG OR TYPE V, BULK (100003685)							
		5 Gal FRESH WATER							
		0.1 % HR-5, 50 LB SK (100005050)							
6	Water Displacement		80.00	bbl	8.33	.0	.0	5.0	
Calculated Values			Pressures			Volumes			
Displacement		Shut In: Instant		Lost Returns		Cement Slurry		Pad	
Top Of Cement		5 Min		Cement Returns	0	Actual Displacement		Treatment	
Frac Gradient		15 Min		Spacers		Load and Breakdown		Total Job	
Rates									
Circulating		Mixing		Displacement		Avg. Job			
Cement Left In Pipe	Amount	35.88 ft	Reason	Shoe Joint					
Frac Ring # 1 @	ID	Frac ring # 2 @	ID	Frac Ring # 3 @	ID	Frac Ring # 4 @	ID		
<b>The Information Stated Herein is Correct</b>				Customer Representative Signature					

# HALLIBURTON

## Cementing Job Log

The Road to Excellence Starts with Safety

Sold To #: 300466	Ship To #: 2730295	Quote #:	Sales Order #: 6721173
Customer: ANADARKO PETROLEUM CORP EBUSINESS		Customer Rep: JONES, CRAIG	
Well Name: Weichel	Well #: 14-14	API/UWI #: #05-123-30385	
Field: DJ	City (SAP): HUDSON	County/Parish: Weld	State: Colorado
<b>Legal Description:</b>			
Lat: N 0 deg. OR N 0 deg. 0 min. 0 secs.		Long: E 0 deg. OR E 0 deg. 0 min. 0 secs.	
Contractor: EXTREME		Rig/Platform Name/Num: # 8	
Job Purpose: Cement Multiple Stages			Ticket Amount:
Well Type: Development Well		Job Type: Cement Multiple Stages	
Sales Person: FLING, MATTHEW		Srvc Supervisor: COLLINS, IRVIN	MBU ID Emp #: 401749

Activity Description	Date/Time	Cht #	Rate bbl/min	Volume bbl		Pressure psig		Comments
				Stage	Total	Tubing	Casing	
Arrive At Loc	06/11/2009 13:30							
Safety Meeting	06/11/2009 15:00							
Test Lines	06/11/2009 15:18							4949PSI
Pump Spacer 1	06/11/2009 15:19		4.5	5	5		246.0	RIG WATER
Pump Spacer 2	06/11/2009 15:21		4.5	20	25		280.0	SD SPACER AT 10.5# MIXED WITH RIG WATER
Pump 1st Stage Tail Slurry	06/11/2009 15:25		4.5	68	93		184.0	225SK'S OF CMT AT 13.5# MIXED WITH RIG WATER
Shutdown	06/11/2009 15:26							
Clean Lines	06/11/2009 15:40							
Drop Top Plug	06/11/2009 15:41							
Pump Displacement	06/11/2009 15:43		6.5	121.3	214.3		600.0	RIG WATER
Bump Plug	06/11/2009 16:04						953.0	BUMPED PLUG AROUND 1639PSI
Other	06/11/2009 16:04							DROP BOMB 1611....WAIT 26MIN BEFORE OPENING DV TOOL
Open Multiple Stage Cementer	06/11/2009 16:40							OPENED DV TOOL AT 920PSI AT 1640
Other	06/11/2009 16:40							PUMPED 5BBL'S OF H2O AT 38BBL'S PER MIN.
Test Lines	06/11/2009 20:23							

Sold To #: 300466

Ship To #: 2730295

Quote #:

Sales Order #:

6721173

SUMMIT Version: 7.20.130

Thursday, June 11, 2009 09:47:00

# HALLIBURTON

## Cementing Job Log

Activity Description	Date/Time	Cht #	Rate bbl/min	Volume bbl		Pressure psig		Comments
				Stage	Total	Tubing	Casing	
Pump Spacer 1	06/11/2009 20:25			5	219.3		190.0	RIG WATER
Pump Spacer 2	06/11/2009 20:25			20	239.3		160.0	SD SPACER 10.5# MIXED WITH RIG WATER
Pump 2nd Stage Lead Slurry	06/11/2009 20:33			183	422.3		70.0	525SK'S OF CMT AT 12.5# MIXED WITH RIG WATER
Pump 2nd Stage Tail Slurry	06/11/2009 20:58			10	432.3		189.0	50SK'S OF CMT AT 15.8# MIXED WITH RIG WATER
Shutdown	06/11/2009 21:07							
Drop Top Plug	06/11/2009 21:07							
Pump Displacement	06/11/2009 21:07			80	934.6		1000. 0	RIG WATER
Bump Plug	06/11/2009 21:20						1450. 0	BUMPED PLUG AROUND 1446PSI
Close Multiple Stage Cementer	06/11/2009 21:23							
End Job	06/11/2009 21:24							

Sold To #: 300466

Ship To #: 2730295

Quote #:

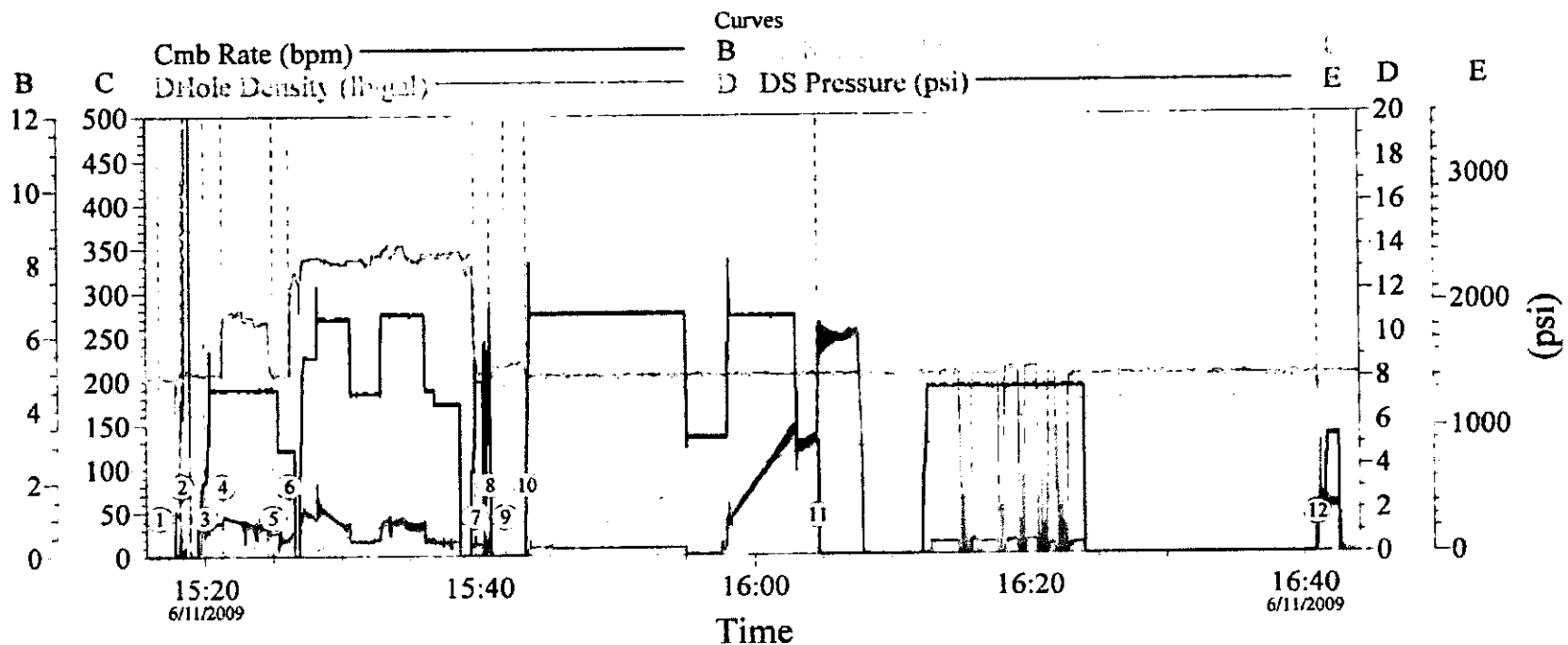
Sales Order #:

6721173

SUMMIT Version: 7.20.130

Thursday, June 11, 2009 09:47:00

# ANADARKO WEICHEL 14-14 1ST STAGE



Event Log							
Intersection	CR	DD	DP	Intersection	CR	DD	DP
① START JOB	15:16:36	0.000	0.000	② TEST LINES	15:18:15	0.000	0.000
③ SPACER 1	15:19:59	2.022	212.3	④ SPACER 2	15:21:18	4.566	277.9
⑤ SPACER 1	15:25:00	4.566	191.7	⑥ TAIL CEMENT	15:26:11	2.870	151.1
⑦ SHUTDOWN	15:39:42	3.412	92.88	⑧ WASH LINES	15:40:47	5.073	114.9
⑨ DROP PLUG	15:41:52	0.000	2.727	⑩ DISPLACE	15:43:24	2.325	5.077
⑪ BUMP PLUG	16:04:38	3.059	10.11	⑫ OPEN MSC	16:40:59	1.239	13.80

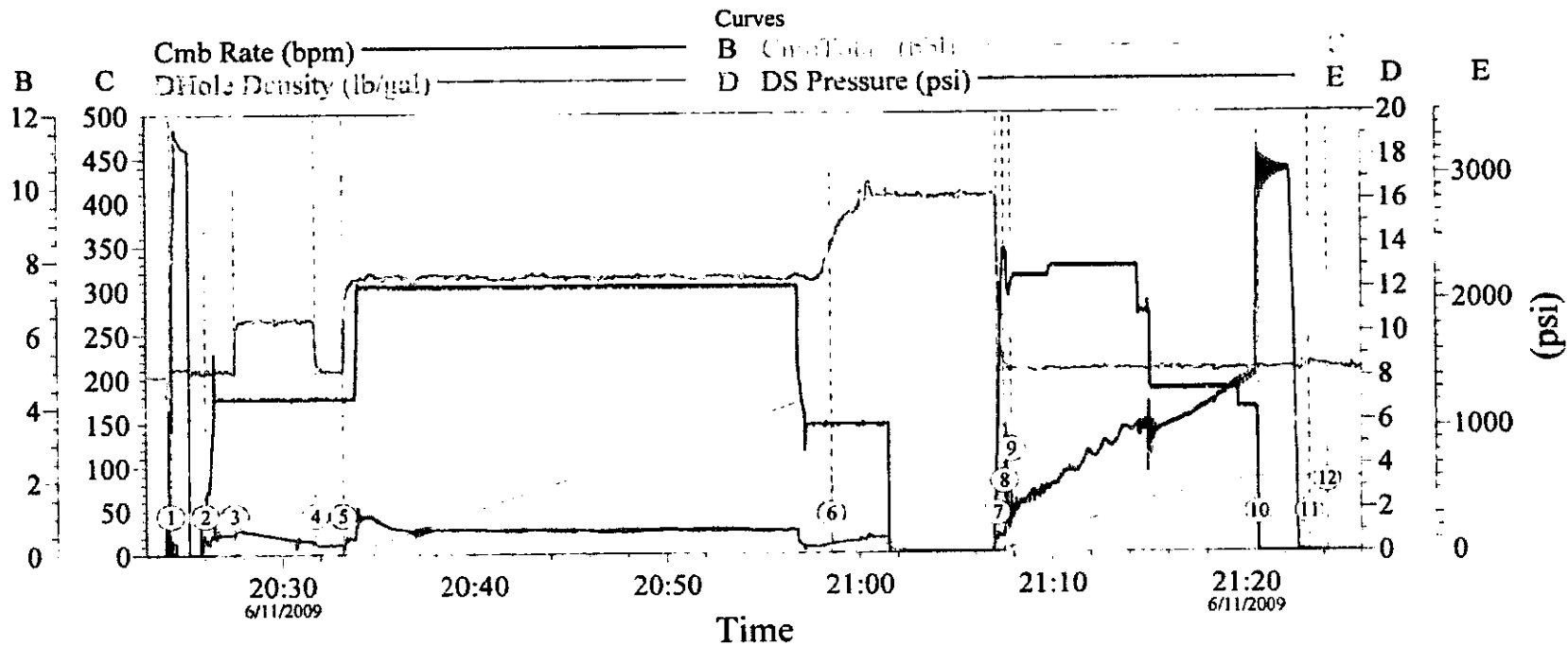
Customer: ANADARKO  
Well Description: PRODUCTION 1ST STAGE

Job Date: 06-11-09  
UWI: #05-123-30385

Ticket #: 6721173

CemWin v1.7.2  
11-Jun-09 17:12

# ANADARKO WEICHEL 14-14 2ND STAGE



Event Log							
Intersection	CR	D.H.	DP	Intersection	CR	D.H.	DP
① TEST LINES	20:24:12	0.000	8.037	② SPACER 1	20:26:01	1.109	117.5
③ SPACER 2	20:27:33	4.240	3.830	④ SPACER 1	20:31:44	4.240	9.69
⑤ LEAD CEMENT	20:33:11	4.240	8.370	⑥ TAIL CEMENT	20:58:32	3.523	13.93
⑦ SHUTDOWN	21:07:08	2.652	13.97	⑧ DROP PLUG	21:07:31	8.274	5.83
⑨ DISPLACE	21:07:53	7.308	6.267	⑩ BUMP PLUG	21:20:41	0.000	3.73
⑪ CLOSE MSC	21:23:15	0.000	8.50	⑫ END JOB	21:24:12	0.000	3.60

Customer: ANADARKO WEICHEL 14-14 2ND STAGE  
 Well Description: PRODUCTION

Job Date: 06-11-09  
 UWI: #05-123-30385

Ticket #: 6721173

CemWin v1.7.2  
 11-Jun-09 21:34

Material Roll Up

Sales Order #: 6616988

Crew: BLUE CREW

AFE #:

Requested Job Start Date:

WO #:

PO #:

Colorado Oil and Gas Commission Wellsite Form

Customer: ANADARKO

Field:

Job Type: PRODUCTION

UWI / API Number: #05-123-30385

County/Parish: WELD

Service Supervisor: IRVIN COLLINS

Well Name: WEICHEL

State: COLORADO

Well No: 14-14

Latitude:

Stage / Zone:

Longitude:

Cust Rep Name: CRAIG JONES

Formation:

Sect / Twn / Rng: / /

Cust Rep Phone #:

Do Not leave the yard without the proper MSDS documentation for All chemicals.

Colorado Oil and Gas Commission					
Material	Delivered to Location	UOM	Specific Gravity	Weight (lbs)	Comment
PREMIUM CEMENT		LB	3.14	15275	
STANDARD CEMENT		LB	3.14	32078	
POZMIX A		LB	2.35	20738	
SSA-1		LB	2.65	6330	
HALAD -344		LB	1.19	38	
SILICALITE		LB	2.52	2250	
ECONOLITE		LB	2.40	83	
FE-2		LB	1.542	108	
BENTONITE(GEL)		LB	2.65	680	
CFR-3		LB	1.28	20	
CLAYFIX		GAL	1.06	0	LIQUID MIXED IN DISPLACEMENT
HR-5		LB		5	

Operator provided all Material Safety Data Sheets (MSDS) related to material listed above. Operator representative will check box to designate he/she has received all MSDS documentation.

Operator Representative Signature



Prepared by: CEMENTERS WELL SERVICE

Company Name: KERR MCGEE OIL & GAS XTREME #8

Well Name: WEICHEL 14-14

Field:

Formation:

County: WELD

State: COLORADO

Job Date: 06/08/09

Comments: TD@ 875FT SET@ 865FT

PLUG LANDED@ 820FT

Fluids: PREFLUSH 30BBLS H2O DISPLACE 54BBLS H2O

Proppants:

Average Rate: 4 BPM

Average STP:

Tubing: N/A

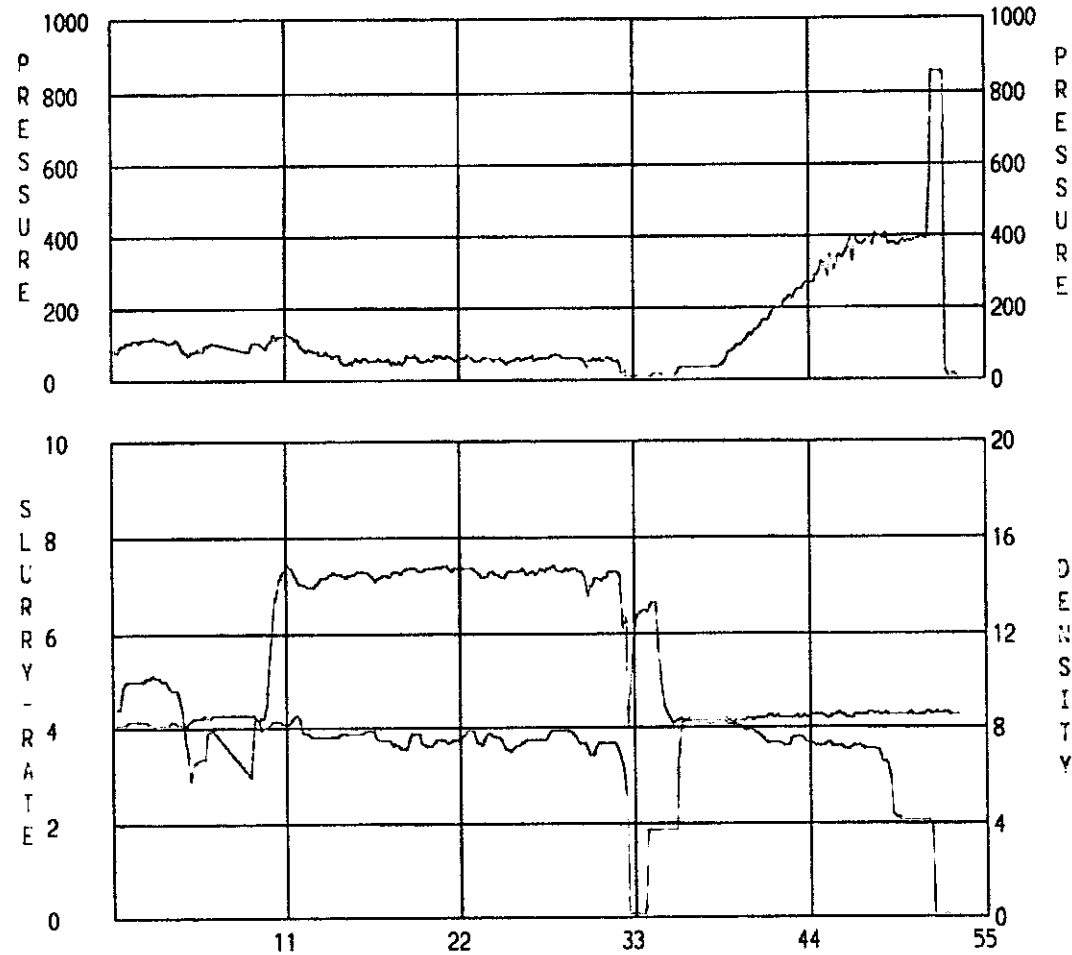
Casing: 8 5/8" CSG-24#

Packer:

Filename: 09060801

Closure Pres: 4000

### LINEAR PLOT



Elapsed Time (min), Start at 13:37

$4 \times 20 = 80 \text{ b/s}$   $340 \times 25$

**RECEIVED**

DEC 08 2009

COGCC



## CEMENT JOB REPORT

CUSTOMER Kerr McGee Corp		DATE 27-DEC-08		FR # 225139680		SERV. SUPV. KURT R KUDRNA							
LEASE & WELL NAME MOSEY #21-27 - API 05123292170000			LOCATION 27-3N-65W			COUNTY-PARISH-BLOCK Weld Colorado							
DISTRICT Brighton		DRILLING CONTRACTOR RIG # Xtreme 11			TYPE OF JOB Long String								
<b>SIZE &amp; TYPE OF PLUGS</b>		<b>LIST-CSG-HARDWARE</b>			<b>PHYSICAL SLURRY PROPERTIES</b>								
Latch Down Plug & Assembly, 4-1/2		Guide Shoe Texas Notched 4-1/2 in Centralizer, with Pins, 4-1/2 in			SACKS OF CEMENT	SLURRY WGT PPG	SLURRY YLD FT <sup>3</sup>	WATER GPS	PUMP TIME HR.MIN	Bbl SLURRY	Bbl MIX WATER		
MATERIALS FURNISHED BY BJ													
50 50 (POZ G) + Additives					195	13.5	1.71	8.30	03.00	58	37.58		
Fresh Water					0	8.34	0	0	00.00	120.7			
Premium Lite + Additives					470	12.5	1.89	10.37	03.00	153	112.27		
Fresh Water					0	8.34	0	0	00.00	5			
Ultra Flush Spacer					0	10	0	0	00.00	20			
Available Mix Water 600 Bbl.		Available Displ. Fluid 250 Bbl.			TOTAL				356.7		149.85		
<b>HOLE</b>		<b>TBG-CSG-O.P</b>				<b>COLLAR DEPTHS</b>							
SIZE	% EXCESS	DEPTH	SIZE	WGT	TYPE	DEPTH	GRADE	SHOE	FLOAT	STAGE			
7.875	0	7820	4.5	11.6	CSG	7795	N-80	7795	7766	0			
<b>LAST CASING</b>		<b>PKR-CMT RET-BR PL-LINER</b>			<b>PERF. DEPTH</b>		<b>TOP CONN</b>		<b>WELL FLUID</b>				
SIZE	WGT	TYPE	DEPTH	BRAND & TYPE	DEPTH	TOP	BTM	SIZE	THREAD	TYPE	WGT		
8.625	24	CSG	650	NO PACKER	0	0	0	4.5	3RD	WATER BASED MU	9.3		
<b>DISPL. VOLUME</b>		<b>DISPL. FLUID</b>		<b>CAL. PSI</b>	<b>CAL. MAX PSI</b>	<b>OP. MAX</b>	<b>MAX TBG PSI</b>		<b>MAX CSG PSI</b>		<b>MIX</b>		
VOLUME	UOM	TYPE	WGT.	BUMP PLUG	TO REV.	SQ. PSI	RATED	Operator	RATED	Operator	WATER		
120.7	BBLS	Fresh Water	8.34	2500	0	0	0	0	6224	3000	RIG TANK		
<b>Circulation Prior to Job</b>													
Circulated Well		Rig	X	BJ	Circulation Time			1	Circulation Rate			8 BPM	
Mud Density In		9.3	LBS/GAL	Mud Density Out		9.3	LBS/GAL	PV & YP Mud In		55	PV & YP Mud Out		55
Gas Present		NO	YES	X	Units	0	Solids Present at End of Circulation			NO	X	YES	
<b>Displacement And Mud Removal</b>													
Displaced By		Rig	BJ	X	Amount Bled Back After Job			1	BBLS				
Returns During Job		NONE		PARTIAL	X	FULL	Method Used to Verify Returns			VISUAL			
Cement Returns at Surface		YES		X	NO	Were Returns Planned at Surface			X	NO	YES		
Pipe Movement		ROTATION	RECIPROICATION	X	NO	UNABLE DUE TO STUCK PIPE							
Centralizers		NO	X	YES	Quantity			30	Type		X BOW RIGID		
Job Pumped Through		CHOKE MANIFOLD		SQUEEZE MANIFOLD	X	MANIFOLD	NO MANIFOLD						
<b>Plugs</b>													
Number of Attempts by BJ		0	Competition		0	Wiper Bails Used		X	NO	YES	Quantity		
Plug Catcher Used		X	NO	YES	Parabow Used		X	NO	YES				
Was There a Bottom		X	NO	YES	Top of Plug		0	FT	Bottom of Plug			0	FT
<b>Squeezes (Update Original Treatment Report for Primary Job)</b>													
BLOCK SQUEEZE		SHOE SQUEEZE		TOP OF LINER SQUEEZE		PLANNED		UNPLANNED					
Liner Packer	X	NO	YES	Bond Log		X	NO	YES	PSI Applied	0	Fluid Weight	0	LBS/GAL
<b>Casing Test (Update Original Treatment Report for Primary Job)</b>													
Casing Test Pressure		0	PSI	With	0	LBS/GAL	Mud	Time Field		00	Hours	00	Minutes
<b>Shoe Test (Update Original Treatment Report for Primary Job)</b>													
Depth Drilled out of Shoe		0	FT	Target EMW		0	LBS/GAL	Actual EMW		0	LBS/GAL		
Number of Times Tests Conducted		0	Mud Weight When Test was Conducted		0	LBS/GAL							

