



PIONEER

Pioneer Energy Services

RADIAL BOND LOG WITH GAMMA RAY

Company **MAGPIE OPERATING INC.**
Well **STATE-ANDERSON 1-36**
Field **JOHNSON,S CORNER**
County **LARIMER** State **CO**

Comp. **MAGPIE OPERATING INC.**
Well **STATE-ANDERSON 1-36**
Field **JOHNSON,S CORNER**
Co. **LARIMER**
State **CO**

Location: **API # : 05-123-062810000**
815 FNL & 1915 FEL
SEC 36 TWP 5N RGE 68W
Permanent Datum **GL** Elevation **4892'**
Log Measured From **KB** 11' Above Perm. Datum
Drilling Measured From **KB**
Other Services **NONE**
K.B. 4903'
D.F. 4902'
G.L. 4892'

Date of Service	9-28-17		
Run Number	ONE		
Depth Driller or PBTD	7659'		
Depth Logger	950		
Bottom Log Interval	950		
Top Log Interval	SURFACE		
Open Hole Size	N/A		
Type Fluid	FSW		
Fluid Level	SURFACE		
Fluid Density	N/A		
Max. Recorded Temperature	N/A		
Max. Wellhead Pressure	N/A		
Wellhead Connection	N/A		
Estimated Cement Top	SEE LOG		
Unit Number	P-53		
Wireline Size	9/32'		
Location	FT MORGAN CO		
Recorded By	PHIL LOPEZ		
Witnessed By	MR K. KRANKER		
	Size	Wt/Ft	Top
Tubing Record			Bottom
Surface Casing	8 5/8'	24#	SURFACE
Production Casing	4 1/2"	11.6#	SURFACE
Liner Record			

<<< Fold Here >>>

All interpretations are opinions based on inferences from electrical or other measurements and Pioneer Wireline Services, LLC cannot and does not guarantee the accuracy or correctness of any interpretation, and Pioneer Wireline Services, LLC will not be liable or responsible for any loss, costs, damages, or expenses incurred or sustained by anyone resulting from any interpretation made by any of our officers, agents or employees.

Comments

N/A DENOTES NOT AVAILABLE OR NON-APPLICABLE.
NO REPEAT OR CALIBRATION PASS
PASS TWO LOGGED WITH 130 PSI AT SURFACE

THANK YOU FOR USING PIONEER ENERGY SERVICES!

Your Pioneer Energy Services Crew	Tool Data - Services	Serial Number
Engineer: P LOPEZ Operator: D MARSHALL Operator: E ENGLE Operator: J REYES		

Log Variables

DatabaseC:\ProgramData\Warrior\magpie_stateanderson1-26_20170928_scbl.db
Dataset field/well/run1/pass5/_vars_

Top - Bottom

BOREID in 7.875	BOTTEMP degF 100	CASEOD in 4.5	CASETHCK in 0	CASEWGHT lb/ft 11.6	MAXAMPL mV 0	MINAMPL mV 1	MINATTN db/ft 0.08
PERFS 0	PPT usec 0	SRFTEMP degF 0	TDEPTH ft 0				

Variable Description

BOREID : Borehole I.D.

BOTTEMP : Bottom Hole Temperature

CASEOD : Casing O.D.

CASETHCK : Casing Thickness

CASEWGHT : Casing Weight

MAXAMPL : Maximum Amplitude

MINAMPL : Minimum Amplitude

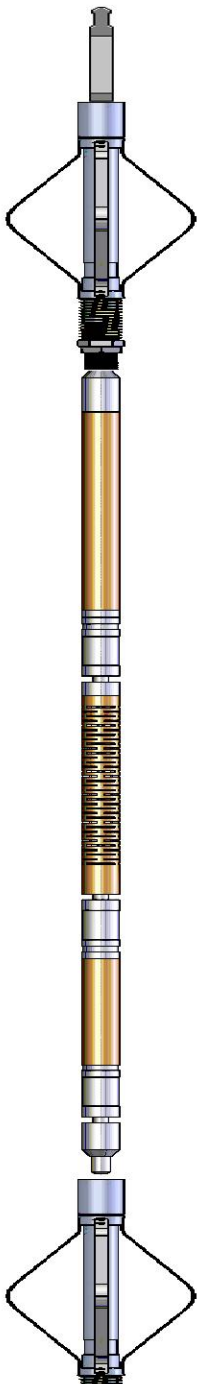
MINATTN : Minimum Attenuation

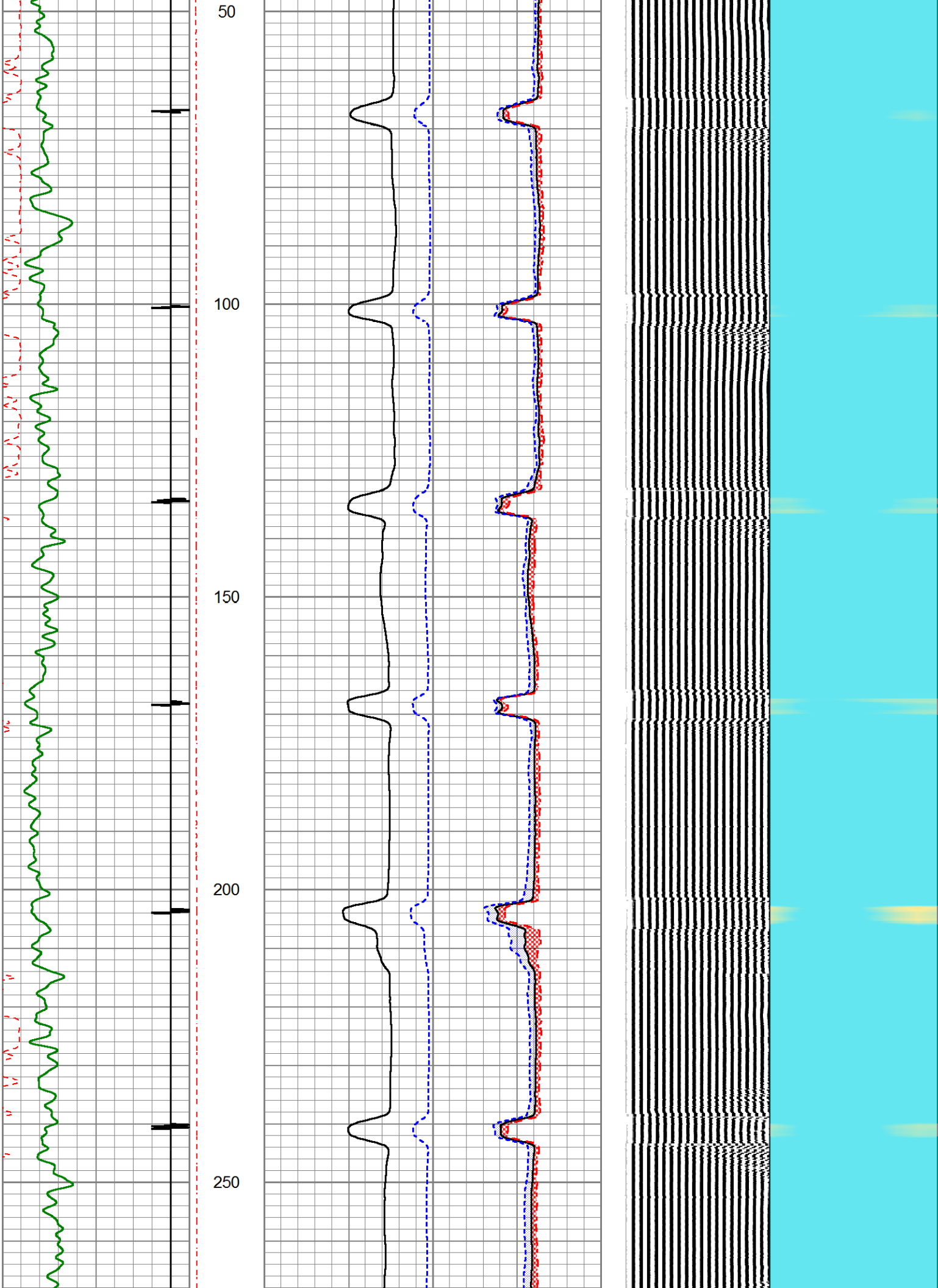
PERFS : Perforation Flag

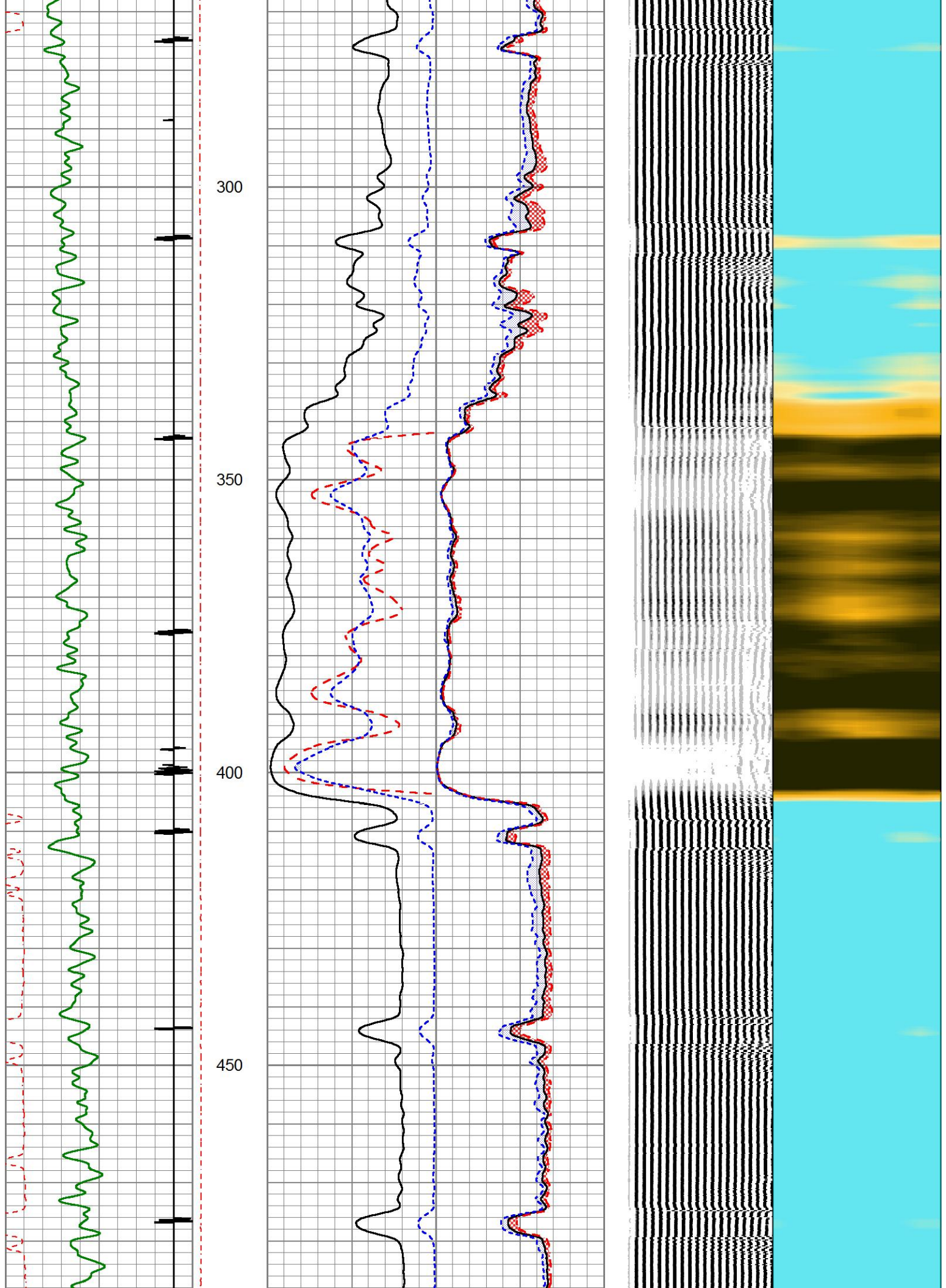
PPT : Predicted Pipe Time

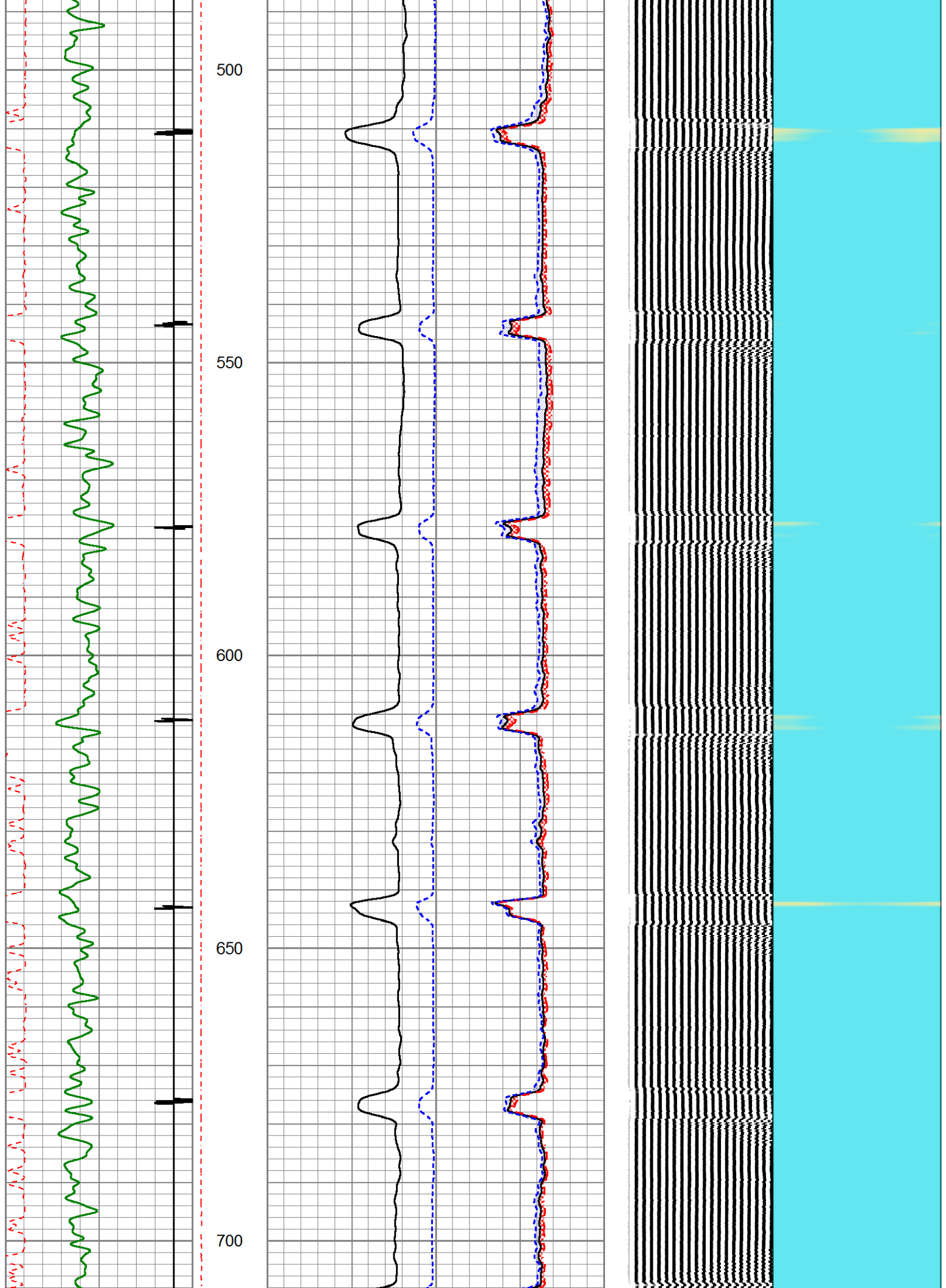
SRFTEMP : Surface Temperature

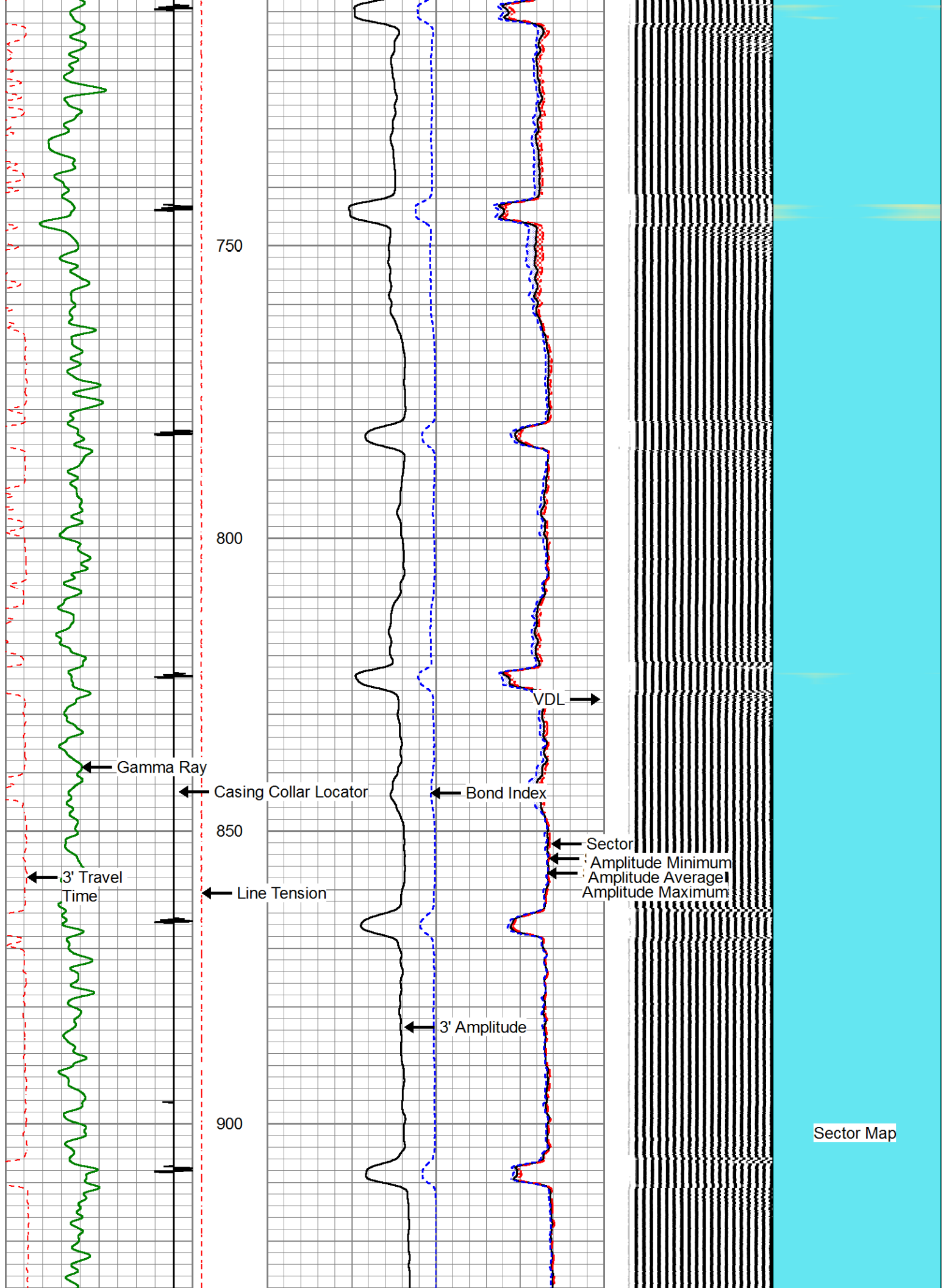
TDEPTH : Total Depth

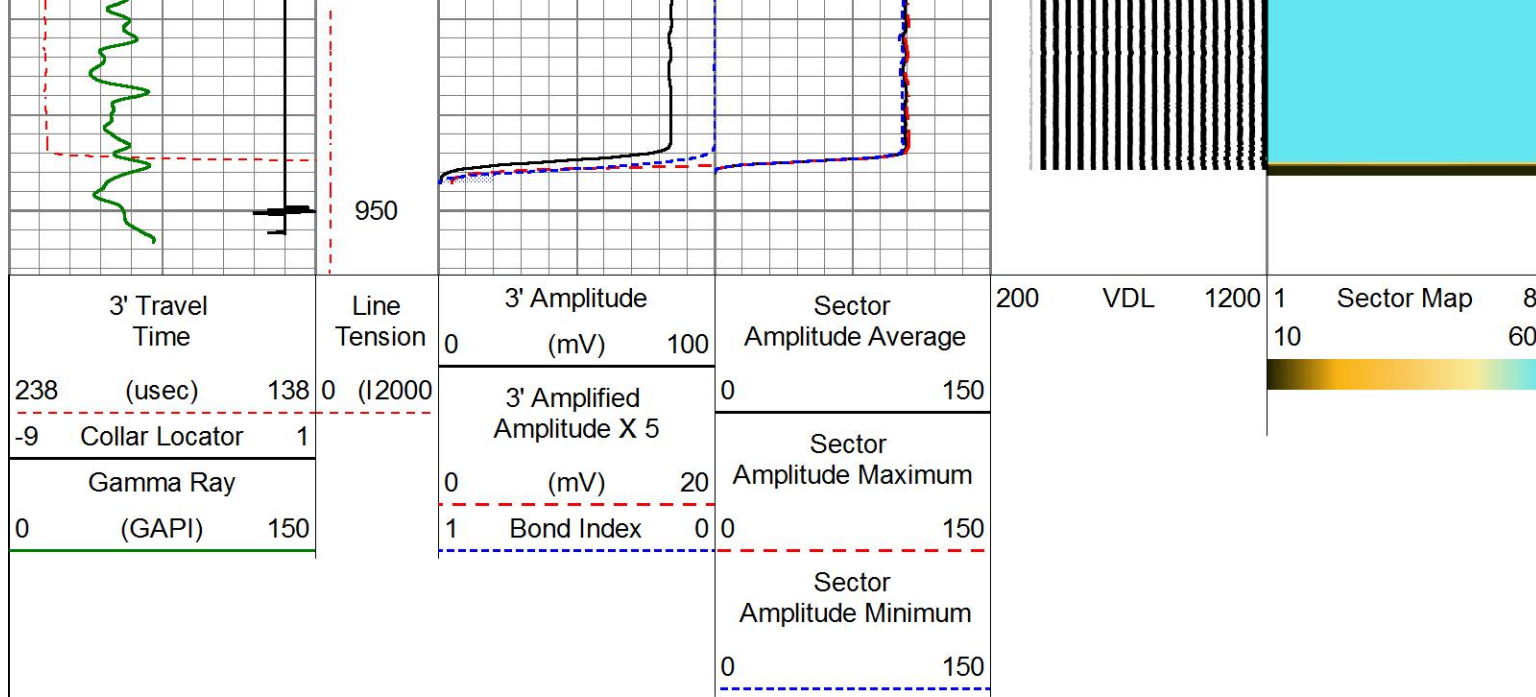
Sensor	Offset (ft)	Schematic	Description	Length (ft)	O.D. (in)	Weight (lb)
			Cable Head-Titan 143 1 7/16" Titan Cable Head	1.03	1.43	2.00
			Centralizer-275 Probe 2 3/4" Probe Adjustable Spring Centralizer	2.88	2.75	15.00
			SCBL-275 Probe (023431) Probe Radii Bond Tool	8.75	2.75	90.00
WVFS8	11.88					
WVFS7	11.88					
WVFS6	11.88					
WVFS5	11.88					
WVFS4	11.88					
WVFS3	11.88					
WVFS2	11.88					
WVFS1	11.88					
WVFCAL	11.88					
WVF3FT	11.88					
WVF5FT	10.88					
HEADVOLT	7.69					
			Centralizer-275 Probe 2 3/4" Probe Adjustable Spring Centralizer	2.88	2.75	15.00











Calibration Report		
Database File	magpie_stateanderson1-26_20170928_scbl.db	
Dataset Pathname	pass5	
Dataset Creation	Thu Sep 28 13:11:36 2017	

Gamma Ray Calibration Report		
Serial Number:	111211	
Tool Model:	275 Probe GR-CCL Dig	
Performed:	Tue Sep 05 09:38:33 2017	
Calibrator Value:	1.0	GAPI
Background Reading:	0.0	cps
Calibrator Reading:	1.0	cps
Sensitivity:	1.0000	GAPI/cps

Segmented Cement Bond Log Calibration Report		
Serial Number:	023431	
Tool Model:	275 Probe	
Calibration Casing Diameter:	4.500	in
Calibration Depth:	900.725	ft

Master Calibration, performed Thu Sep 28 12:05:51 2017:						
	Raw (v)		Calibrated (mv)		Results	
	Zero	Cal	Zero	Cal	Gain	Offset
3'	0.000	1.584	1.000	81.196	50.619	1.000
CAL	0.000	1.411				
5'	0.000	1.500	1.000	81.196	53.476	1.000
SUM						
S1	0.000	1.517	0.000	100.000	65.919	0.000
S2	0.000	1.579	0.000	100.000	63.321	0.000
S3	0.000	1.608	0.000	100.000	62.170	0.000
S4	0.000	1.622	0.000	100.000	61.644	0.000
S5	0.000	1.624	0.000	100.000	61.588	0.000
S6	0.000	1.604	0.000	100.000	62.347	0.000
S7	0.000	1.566	0.000	100.000	62.851	0.000

S7	0.000	1.566	0.000	100.000	65.851	0.000
S8	0.000	1.533	0.000	100.000	65.253	0.000

Company	MAGPIE OPERATING INC.		
Well	STATE-ANDERSON 1-36		
Field	JOHNSON,S CORNER		
County	LARIMER	State	CO

