

WELL LOCATION PLAT NORTHWEST A S20-25-8C

NW1/4 NW1/4 SEC. 9, T1S, R68W, 6TH P.M.

NW COR. SEC. 9
FOUND #6 REBAR
W/ 3.25" A.C.
PLS 24942

NE COR. SEC. 9
FOUND 2" PIPE
W/ 3.25" A.C.
PLS 24960

WELL BORES
CONTINUE INTO
SECTION 8
(SHEET 2)

W 1/4 COR. SEC. 9
FOUND #6 REBAR
W/ 3.25" A.C.
PLS 12330

SW COR. SEC. 9
FOUND #6 REBAR
W/ 3.25" A.C.
PLS 6973

N 1/4 COR. SEC. 9
FOUND 2.5" PIPE
W/ 3.25" A.C.
PLS 24942

C 1/4 COR. SEC. 9
FOUND 2.375" PIPE
W/ 3.25" A.C.
PLS 7276

S 1/4 COR. SEC. 9
FOUND #6 REBAR
W/ 2" A.C.
PLS 25937

E 1/4 COR. SEC. 9
FOUND 2" PIPE
W/ 3.25" A.C.
PLS 7276



SE COR. SEC. 9
FOUND 2" PIPE
W/ 3.25" A.C.
ILLEGIBLE

I HEREBY CERTIFY THAT THIS WELL LOCATION CERTIFICATE WAS PREPARED BY ME, OR UNDER MY DIRECT SUPERVISION, THAT THE FIELD WORK WAS COMPLETED ON 12/21/2017, THAT IT IS NOT A LAND SURVEY PLAT OR AN IMPROVEMENT SURVEY PLAT, AND THAT IT IS NOT TO BE RELIED UPON FOR ESTABLISHMENT OF FENCE, BUILDING OR OTHER FUTURE IMPROVEMENT LINES.

AARON A. DEMO
Professional Land Surveyor Registration No. 38285
State of Colorado
FOR AND ON BEHALF OF BASELINE ENGINEERING CORP.

SURFACE LOCATION
SEC. 9, T1S, R68W
GROUND ELEVATION = 5314.2'
PDOP = 1.5
LATITUDE = 39.983137°
LONGITUDE = -105.013043°
1297' FNL, 779' FWL
ENTRY POINT LOCATION
SEC. 8, T1S, R68W
LATITUDE = 39.985358°
LONGITUDE = -105.027430°
480' FNL, 2048' FWL
BOTTOM HOLE LOCATION
SEC. 20, T1S, R68W
LATITUDE = 39.951703°
LONGITUDE = -105.027275°
2191' FNL, 2003' FWL

NOTES:

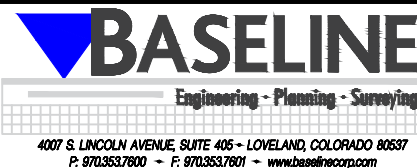
1.  INDICATES SECTION CORNER
2.  INDICATES CALCULATED CORNER
3. (C) INDICATES CALCULATED DIMENSION
4. ELEVATION BASED ON NAVD88 (GEOID12B)
5. BEARINGS DERIVED FROM COLORADO COORDINATE SYSTEM OF 1983 NORTH ZONE.
6. OPERATOR: TRAVIS WINNICKI
7. IMPROVEMENTS: SEE LOCATION DRAWING FOR ALL VISIBLE IMPROVEMENTS WITHIN 500' OF DISTURBED AREA.
8. WELL FOOTAGES ARE MEASURED AT RIGHT ANGLES TO THE SECTION LINES.

NEAREST CULTURAL ITEMS:

BUILDING: 826' SE
BUILDING UNIT: 1045' S
HIGH OCCUPANCY BUILDING UNIT: 5280'+
DESIGNATED OUTSIDE ACTIVITY AREA: 5280'+
PUBLIC ROAD: CO-470 ON RAMP 320' NW
ABOVE GROUND UTILITY: 1260' N
RAILROAD: 5280'+
PROPERTY LINE: 74' S
SURFACE USE: FARMLAND.
NEAREST EXISTING WELL: NORDSTROM 3-9 1037' E



DRAWN BY	RPM	CHECKED BY	AAD
INITIAL SUBMITTAL	1/19/2017	REVISED	N/A
DRAWING SIZE	8.5" X 11"	JOB NO.	EXT01S8B09-01
SHEET	1 OF 4		





BASELINE
Engineering - Planning - Surveying

4007 S. LINCOLN AVENUE, SUITE 405 • LOVELAND, COLORADO 80537
P: 970.353.7600 • F: 970.353.7601 • www.baselinecolor.com

PLOT_STAMP

WELL LOCATION PLAT NORTHWEST A S20-25-8C

WELL BORE
CONTINUES INTO
SECTION 8
(SHEET 2)

NW1/4 NW1/4 SEC. 9, T1S, R68W, 6TH P.M.

NW COR. SEC. 17
FOUND #6 REBAR
UPGRADED W/
3.25" A.C.
PLS 38285

NE COR. SEC. 17
FOUND #6 REBAR
W/ 3.25" A.C.
PLS 6973

N 1/4 COR. SEC. 17
FOUND 2.375" PIPE
W/ 3.25" A.C.
PLS 17669

W 1/4 COR.
SEC. 17
FOUND 2" AXLE
W/ 3" A.C.
PLS 13290

C 1/4 COR. SEC. 17
FOUND 2" A.C. IN
CONCRETE
PLS 30100

E 1/4 COR. SEC. 17
(CALCULATED
BASED ON RECORDS
OF SURVEY)

SW COR. SEC. 17
FOUND #6 REBAR
W/ 2" A.C.
PLS 15315

S 1/4 COR. SEC. 17
FOUND 1" AXLE
W/ 2" A.C.
PLS 30100

SE COR. SEC. 17
FOUND 1.125" AXLE
W/ 2.5" A.C.
ILLEGIBLE



WELL BORE
CONTINUES INTO
SECTION 20
(SHEET 4)

I HEREBY CERTIFY THAT THIS WELL LOCATION CERTIFICATE WAS PREPARED BY ME, OR UNDER MY DIRECT SUPERVISION, THAT THE FIELD WORK WAS COMPLETED ON 12/21/2017, THAT IT IS NOT A LAND SURVEY PLAT OR AN IMPROVEMENT SURVEY PLAT, AND THAT IT IS NOT TO BE RELIED UPON FOR ESTABLISHMENT OF FENCE, BUILDING OR OTHER FUTURE IMPROVEMENT LINES.

AARON A. DEMO
Professional Land Surveyor Registration No. 38285
State of Colorado
FOR AND ON BEHALF OF BASELINE ENGINEERING CORP.

SURFACE LOCATION
SEC. 9, T1S, R68W
GROUND ELEVATION = 5314.2'
PDOP = 1.5
LATITUDE = 39.983137°
LONGITUDE = -105.013043°
1297' FNL, 779' FWL
ENTRY POINT LOCATION
SEC. 8, T1S, R68W
LATITUDE = 39.985358°
LONGITUDE = -105.027430°
480' FNL, 2048' FWL
BOTTOM HOLE LOCATION
SEC. 20, T1S, R68W
LATITUDE = 39.951703°
LONGITUDE = -105.027275°
2191' FNL, 2003' FWL

NOTES:

1.  INDICATES SECTION CORNER
2.  INDICATES CALCULATED CORNER
3. (C) INDICATES CALCULATED DIMENSION
4. ELEVATION BASED ON NAVD88 (GEOID12B)
5. BEARINGS DERIVED FROM COLORADO COORDINATE SYSTEM OF 1983 NORTH ZONE.
6. OPERATOR: TRAVIS WINNICKI
7. IMPROVEMENTS: SEE LOCATION DRAWING FOR ALL VISIBLE IMPROVEMENTS WITHIN 500' OF DISTURBED AREA.
8. WELL FOOTAGES ARE MEASURED AT RIGHT ANGLES TO THE SECTION LINES.

NEAREST CULTURAL ITEMS:

BUILDING: 826' SE
BUILDING UNIT: 1045' S
HIGH OCCUPANCY BUILDING UNIT: 5280'+
DESIGNATED OUTSIDE ACTIVITY AREA: 5280'+
PUBLIC ROAD: CO-470 ON RAMP 320' NW
ABOVE GROUND UTILITY: 1260' N
RAILROAD: 5280'+
PROPERTY LINE: 74' S
SURFACE USE: FARMLAND.
NEAREST EXISTING WELL: NORDSTROM 3-9 1037' E



DRAWN BY	RPM	CHECKED BY	AAD
INITIAL SUBMITTAL	1/19/2017		
REVISED	N/A		
DRAWING SIZE	8.5" X 11"		
JOB NO.	EXT01S8B09-01		
SHEET	3 of 4		

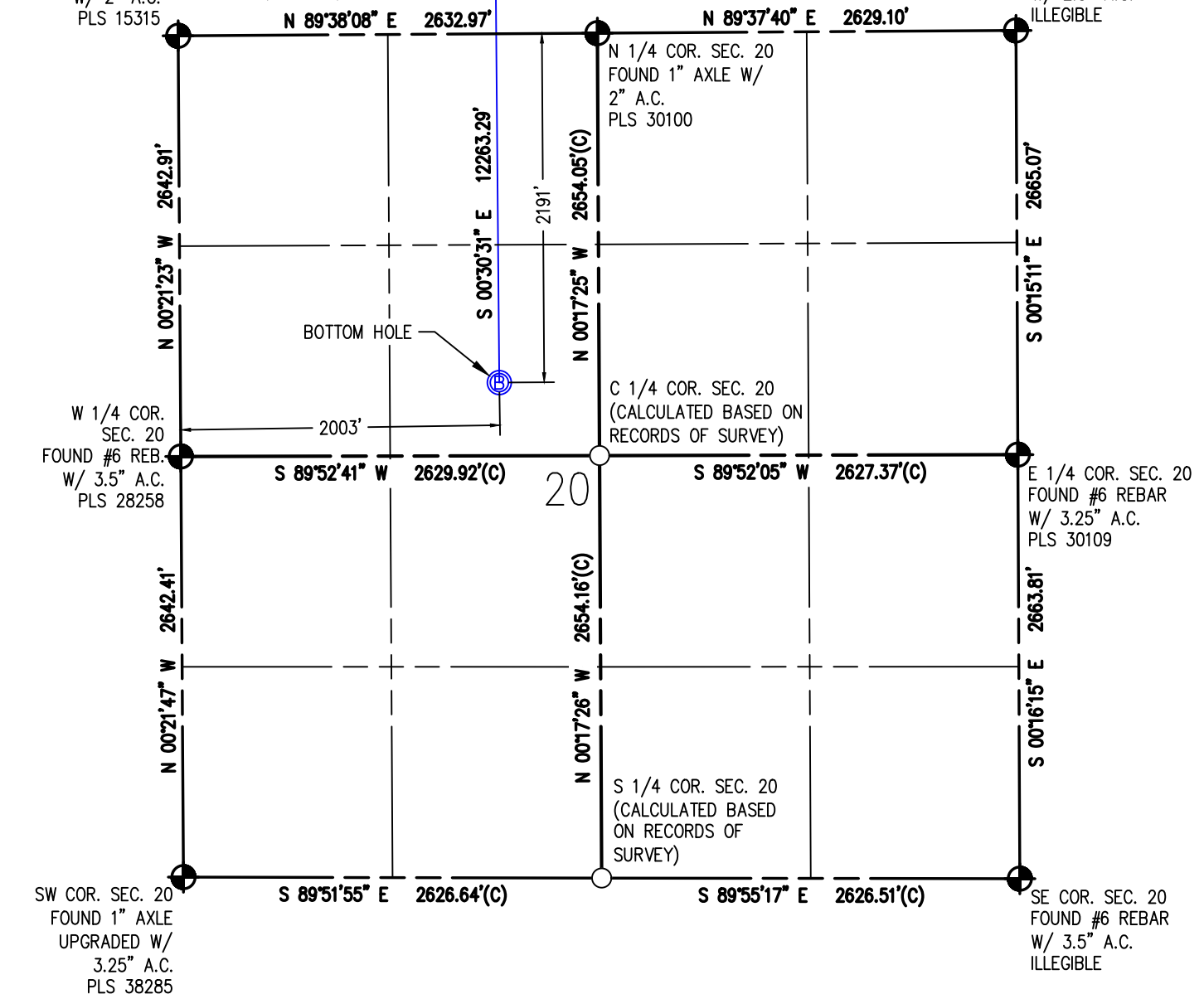
BASELINE
Engineering - Planning - Surveying
4007 S. LINCOLN AVENUE, SUITE 405 - LOVELAND, COLORADO 80537
P: 970.353.7800 - F: 970.353.7801 - www.baselinecorp.com

NORTHWEST A S20-25-8C

WELL BORE
CONTINUES INTO
SECTION 17
(SHEET 3)

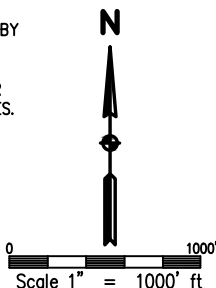
NW1/4 NW1/4 SEC. 9, T1S, R68W, 6TH P.M.

NE COR. SEC. 20
FOUND 1.125" AXLE
W/ 2.5" A.C.
ILLEGIBLE



I HEREBY CERTIFY THAT THIS WELL LOCATION CERTIFICATE WAS PREPARED BY ME, OR UNDER MY DIRECT SUPERVISION, THAT THE FIELD WORK WAS COMPLETED ON 12/21/2017, THAT IT IS NOT A LAND SURVEY PLAT OR AN IMPROVEMENT SURVEY PLAT, AND THAT IT IS NOT TO BE RELIED UPON FOR ESTABLISHMENT OF FENCE, BUILDING OR OTHER FUTURE IMPROVEMENT LINES.

AARON A. DEMO
Professional Land Surveyor Registration No. 38285
State of Colorado
FOR AND ON BEHALF OF BASELINE ENGINEERING CORP.


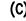


SURFACE LOCATION
SEC. 9, T1S, R68W
GROUND ELEVATION = 5314.2'
PDOP = 1.5
LATITUDE = 39.983137°
LONGITUDE = -105.013043°
1297' FNL, 779' FWL

ENTRY POINT LOCATION
SEC. 8, T1S, R68W
LATITUDE = 39.985358°
LONGITUDE = -105.027430°
480' FNL, 2048' FWL

BOTTOM HOLE LOCATION
SEC. 20, T1S, R68W
LATITUDE = 39.951703°
LONGITUDE = -105.027275°
2191' FNL, 2003' FWL

NOTES:

1.  INDICATES SECTION CORNER
2.  INDICATES CALCULATED CORNER
3. (C) INDICATES CALCULATED DIMENSION
4. ELEVATION BASED ON NAVD88 (GEOID12B)
5. BEARINGS DERIVED FROM COLORADO COORDINATE SYSTEM OF 1983 NORTH ZONE.
6. OPERATOR: TRAVIS WINNICKI
7. IMPROVEMENTS: SEE LOCATION DRAWING FOR ALL VISIBLE IMPROVEMENTS WITHIN 500' OF DISTURBED AREA.
8. WELL FOOTAGES ARE MEASURED AT RIGHT ANGLES TO THE SECTION LINES.

NEAREST CULTURAL ITEMS:

BUILDING: 826' SE
BUILDING UNIT: 1045' S
HIGH OCCUPANCY BUILDING UNIT: 5280'+
DESIGNATED OUTSIDE ACTIVITY AREA: 5280'+
PUBLIC ROAD: CO-470 ON RAMP 320' NW
ABOVE GROUND UTILITY: 1260' N
RAILROAD: 5280'+
PROPERTY LINE: 74' S
SURFACE USE: FARMLAND.
NEAREST EXISTING WELL: NORDSTROM 3-9 1037' E



DRAWN BY RPM	CHECKED BY AAD
INITIAL SUBMITTAL	1/19/2017
REVISED	N/A
DRAWING SIZE	8.5" X 11"
FILE NO.	EXT01S68W09-01
SHEET 4 OF 4	



BASLINE
Engineering - Planning - Surveying
4007 S. LINCOLN AVENUE, SUITE 405 • LOVELAND, COLORADO 80537
P. 970.353.7601 • F. 970.353.7601 • www.baselineccom.com