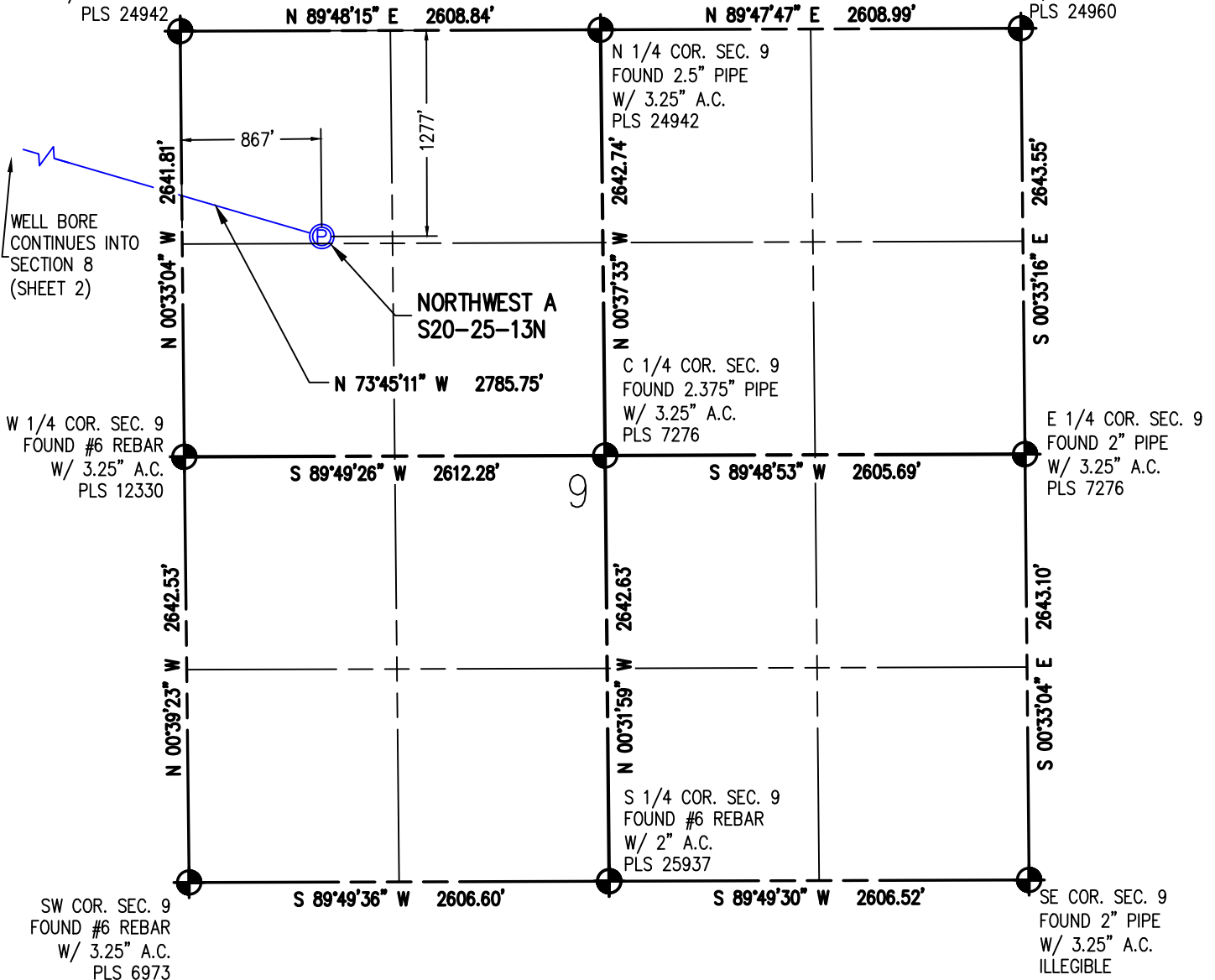


WELL LOCATION PLAT NORTHWEST A S20-25-13N

NW COR. SEC. 9
FOUND #6 REBAR
W/ 3.25" A.C.
PLS 24942

NW1/4 NW1/4 SEC. 9, T1S, R68W, 6TH P.M.

NE COR. SEC. 9
FOUND 2" PIPE
W/ 3.25" A.C.
PLS 24960



I HEREBY CERTIFY THAT THIS WELL LOCATION CERTIFICATE WAS PREPARED BY ME, OR UNDER MY DIRECT SUPERVISION, THAT THE FIELD WORK WAS COMPLETED ON 12/21/2017, THAT IT IS NOT A LAND SURVEY PLAT OR AN IMPROVEMENT SURVEY PLAT, AND THAT IT IS NOT TO BE RELIED UPON FOR ESTABLISHMENT OF FENCE, BUILDING OR OTHER FUTURE IMPROVEMENT LINES.

AARON A. DEMO
Professional Land Surveyor Registration No. 38285
State of Colorado
FOR AND ON BEHALF OF BASELINE ENGINEERING CORP.

N

0 1000'
Scale 1" = 1000' ft

SURFACE LOCATION
SEC. 9, T1S, R68W
GROUND ELEVATION = 5314.1'
PDOP = 1.5
LATITUDE = 39.983191°
LONGITUDE = -105.012730°
1277' FNL, 867' FWL
ENTRY POINT LOCATION
SEC. 8, T1S, R68W
LATITUDE = 39.985370°
LONGITUDE = -105.022256°
480' FNL, 1800' FEL
BOTTOM HOLE LOCATION
SEC. 20, T1S, R68W
LATITUDE = 39.951691°
LONGITUDE = -105.022101°
2197' FNL, 1804' FEL

NOTES:

1. ● INDICATES SECTION CORNER
2. ○ INDICATES CALCULATED CORNER
3. (C) INDICATES CALCULATED DIMENSION
4. ELEVATION BASED ON NAVD88 (GEOID12B)
5. BEARINGS DERIVED FROM COLORADO COORDINATE SYSTEM OF 1983 NORTH ZONE.
6. OPERATOR: TRAVIS WINNIKI
7. IMPROVEMENTS: SEE LOCATION DRAWING FOR ALL VISIBLE IMPROVEMENTS WITHIN 500' OF DISTURBED AREA.
8. WELL FOOTAGES ARE MEASURED AT RIGHT ANGLES TO THE SECTION LINES.

NEAREST CULTURAL ITEMS:

BUILDING: 816' SE
BUILDING UNIT: 1047' S
HIGH OCCUPANCY BUILDING UNIT: 5280'+
DESIGNATED OUTSIDE ACTIVITY AREA: 5280'+
PUBLIC ROAD: CO-470 ON RAMP 325' NW
ABOVE GROUND UTILITY: 1246' N
RAILROAD: 5280'+
PROPERTY LINE: 94' S
SURFACE USE: FARMLAND.
NEAREST EXISTING WELL: NORDSTROM 3-9 955' E



DRAWN BY	RPM	CHECKED BY	AAD
INITIAL SUBMITTAL	1/19/2017	REVISED	N/A
DRAWING SIZE	8.5" X 11"	JOB NO.	EXT01S8B09-01
SHEET	1 OF 4		

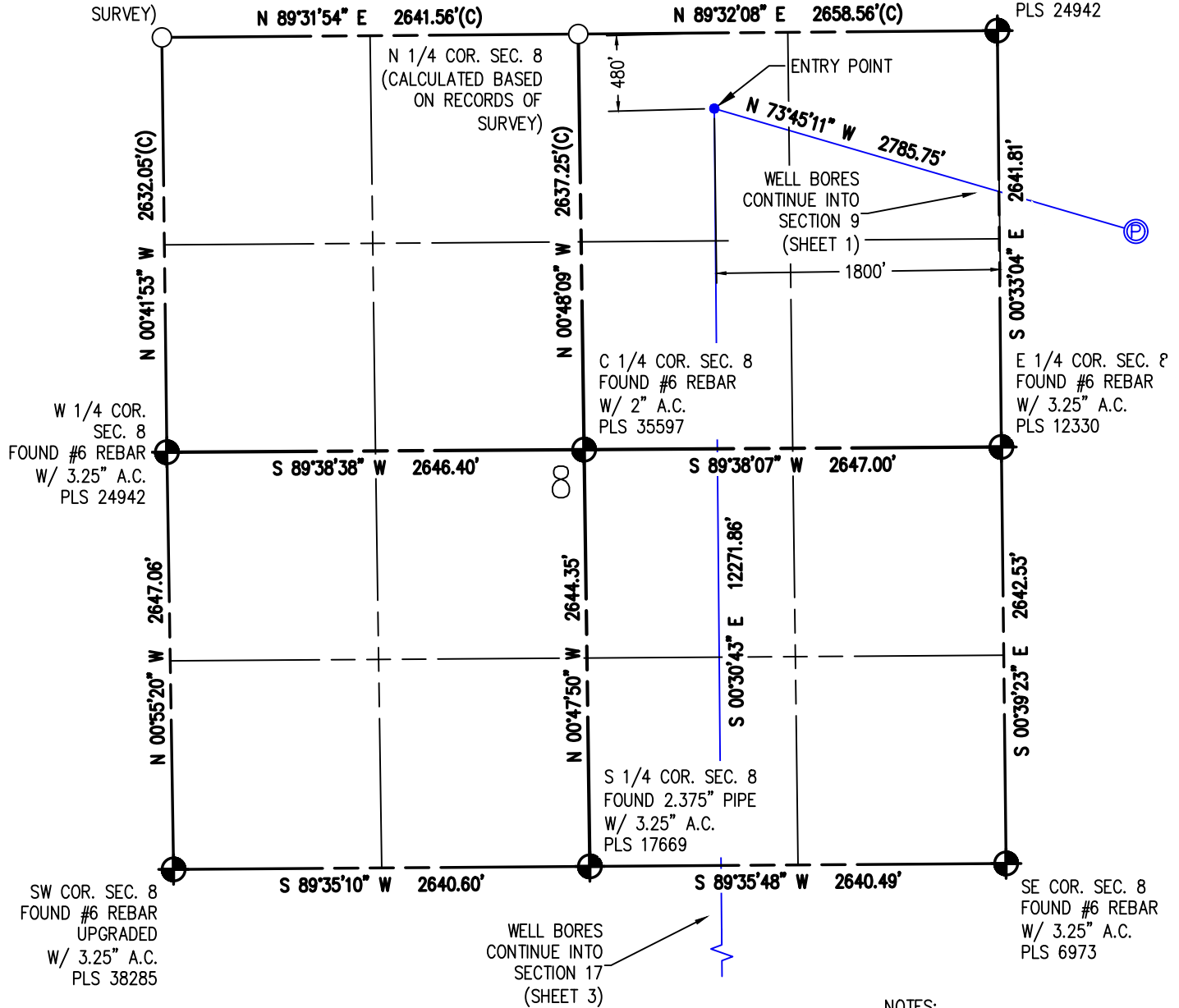
BASELINE
Engineering - Planning - Surveying
4007 S. LINCOLN AVENUE, SUITE 405 - LOVELAND, COLORADO 80537
P: 970.353.7800 - F: 970.353.7801 - www.baselinecorp.com

WELL LOCATION PLAT NORTHWEST A S20-25-13N

NW COR. SEC. 8
(CALCULATED BASED
ON RECORDS OF
SURVEY)

NW1/4 NW1/4 SEC. 9, T1S, R68W, 6TH P.M.

NE COR. SEC. 8
FOUND #6 REBAR
W/ 3.25" A.C.
PLS 24942



I HEREBY CERTIFY THAT THIS WELL LOCATION CERTIFICATE WAS PREPARED BY ME, OR UNDER MY DIRECT SUPERVISION, THAT THE FIELD WORK WAS COMPLETED ON 12/21/2017, THAT IT IS NOT A LAND SURVEY PLAT OR AN IMPROVEMENT SURVEY PLAT, AND THAT IT IS NOT TO BE RELIED UPON FOR ESTABLISHMENT OF FENCE, BUILDING OR OTHER FUTURE IMPROVEMENT LINES.

AARON A. DEMO
Professional Land Surveyor Registration No. 38285
State of Colorado
FOR AND ON BEHALF OF BASELINE ENGINEERING CORP.

WELL BORES
CONTINUE INTO
SECTION 17
(SHEET 3)

SURFACE LOCATION
SEC. 9, T1S, R68W
GROUND ELEVATION = 5314.1'
PDOP = 1.5
LATITUDE = 39.983191°
LONGITUDE = -105.012730°
1277' FNL, 867' FWL
ENTRY POINT LOCATION
SEC. 8, T1S, R68W
LATITUDE = 39.985370°
LONGITUDE = -105.022256°
480' FNL, 1800' FEL
BOTTOM HOLE LOCATION
SEC. 20, T1S, R68W
LATITUDE = 39.951691°
LONGITUDE = -105.022101°
2197' FNL, 1804' FEL

NOTES:

1. INDICATES SECTION CORNER
2. INDICATES CALCULATED CORNER
3. (C) INDICATES CALCULATED DIMENSION
4. ELEVATION BASED ON NAVD88 (GEOID12B)
5. BEARINGS DERIVED FROM COLORADO COORDINATE SYSTEM OF 1983 NORTH ZONE.
6. OPERATOR: TRAVIS WINNICKI
7. IMPROVEMENTS: SEE LOCATION DRAWING FOR ALL VISIBLE IMPROVEMENTS WITHIN 500' OF DISTURBED AREA.
8. WELL FOOTAGES ARE MEASURED AT RIGHT ANGLES TO THE SECTION LINES.

NEAREST CULTURAL ITEMS:

BUILDING: 816' SE
BUILDING UNIT: 1047' S
HIGH OCCUPANCY BUILDING UNIT: 5280'+
DESIGNATED OUTSIDE ACTIVITY AREA: 5280'+
PUBLIC ROAD: CO-470 ON RAMP 325' NW
ABOVE GROUND UTILITY: 1246' N
RAILROAD: 5280'+
PROPERTY LINE: 94' S
SURFACE USE: FARMLAND.
NEAREST EXISTING WELL: NORDSTROM 3-9 955' E



DRAWN BY	RPM	CHECKED BY	AAD
INITIAL SUBMITTAL	1/19/2017	REVISED	N/A
DRAWING SIZE	8.5" X 11"	JOB NO.	EXT01S8B09-01
SHEET	2 OF 4		

BASELINE
Engineering - Planning - Surveying
4007 S. LINCOLN AVENUE, SUITE 405 - LOVELAND, COLORADO 80537
P: 970.353.7800 - F: 970.353.7801 - www.baselinecorp.com

WELL LOCATION PLAT NORTHWEST A S20-25-13N

NW1/4 NW1/4 SEC. 9, T1S, R68W, 6TH P.M.

WELL BORE
CONTINUES INTO
SECTION 8
(SHEET 2)

NW COR. SEC. 17
FOUND #6 REBAR
UPGRADED W/
3.25" A.C.
PLS 38285

NE COR. SEC. 17
FOUND #6 REBAR
W/ 3.25" A.C.
PLS 6973

N 1/4 COR. SEC. 17
FOUND 2.375" PIPE
W/ 3.25" A.C.
PLS 17669

C 1/4 COR. SEC. 17
FOUND 2" A.C. IN
CONCRETE
PLS 30100

W 1/4 COR.
SEC. 17
FOUND 2" AXLE
W/ 3" A.C.
PLS 13290

E 1/4 COR. SEC. 17
(CALCULATED
BASED ON RECORDS
OF SURVEY)

SW COR. SEC. 17
FOUND #6 REBAR
W/ 2" A.C.
PLS 15315

SE COR. SEC. 17
FOUND 1.125" AXLE
W/ 2.5" A.C.
ILLEGIBLE

WELL BORE
CONTINUES INTO
SECTION 20
(SHEET 4)

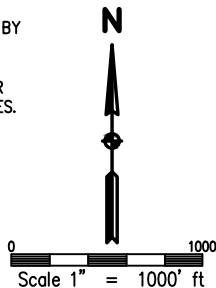
SURFACE LOCATION
SEC. 9, T1S, R68W
GROUND ELEVATION = 5314.1'
PDOP = 1.5
LATITUDE = 39.983191°
LONGITUDE = -105.012730°
1277' FNL, 867' FWL
ENTRY POINT LOCATION
SEC. 8, T1S, R68W
LATITUDE = 39.985370°
LONGITUDE = -105.022256°
480' FNL, 1800' FEL
BOTTOM HOLE LOCATION
SEC. 20, T1S, R68W
LATITUDE = 39.951691°
LONGITUDE = -105.022101°
2197' FNL, 1804' FEL

NOTES:

1. INDICATES SECTION CORNER
2. INDICATES CALCULATED CORNER
3. (C) INDICATES CALCULATED DIMENSION
4. ELEVATION BASED ON NAVD88 (GEOID12B)
5. BEARINGS DERIVED FROM COLORADO COORDINATE SYSTEM OF 1983 NORTH ZONE.
6. OPERATOR: TRAVIS WINNICKI
7. IMPROVEMENTS: SEE LOCATION DRAWING FOR ALL VISIBLE IMPROVEMENTS WITHIN 500' OF DISTURBED AREA.
8. WELL FOOTAGES ARE MEASURED AT RIGHT ANGLES TO THE SECTION LINES.

I HEREBY CERTIFY THAT THIS WELL LOCATION CERTIFICATE WAS PREPARED BY ME, OR UNDER MY DIRECT SUPERVISION, THAT THE FIELD WORK WAS COMPLETED ON 12/21/2017, THAT IT IS NOT A LAND SURVEY PLAT OR AN IMPROVEMENT SURVEY PLAT, AND THAT IT IS NOT TO BE RELIED UPON FOR ESTABLISHMENT OF FENCE, BUILDING OR OTHER FUTURE IMPROVEMENT LINES.

AARON A. DEMO
Professional Land Surveyor Registration No. 38285
State of Colorado
FOR AND ON BEHALF OF BASELINE ENGINEERING CORP.

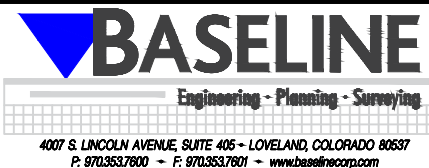


NEAREST CULTURAL ITEMS:

BUILDING: 816' SE
BUILDING UNIT: 1047' S
HIGH OCCUPANCY BUILDING UNIT: 5280'+
DESIGNATED OUTSIDE ACTIVITY AREA: 5280'+
PUBLIC ROAD: CO-470 ON RAMP 325' NW
ABOVE GROUND UTILITY: 1246' N
RAILROAD: 5280'+
PROPERTY LINE: 94' S
SURFACE USE: FARMLAND.
NEAREST EXISTING WELL: NORDSTROM 3-9 955' E



DRAWN BY	RPM	CHECKED BY	AAD
INITIAL SUBMITTAL	1/19/2017		
REVISED	N/A		
DRAWING SIZE	8.5" X 11"		
JOB NO.	EXT01S8B09-01		
SHEET	3 of 4		



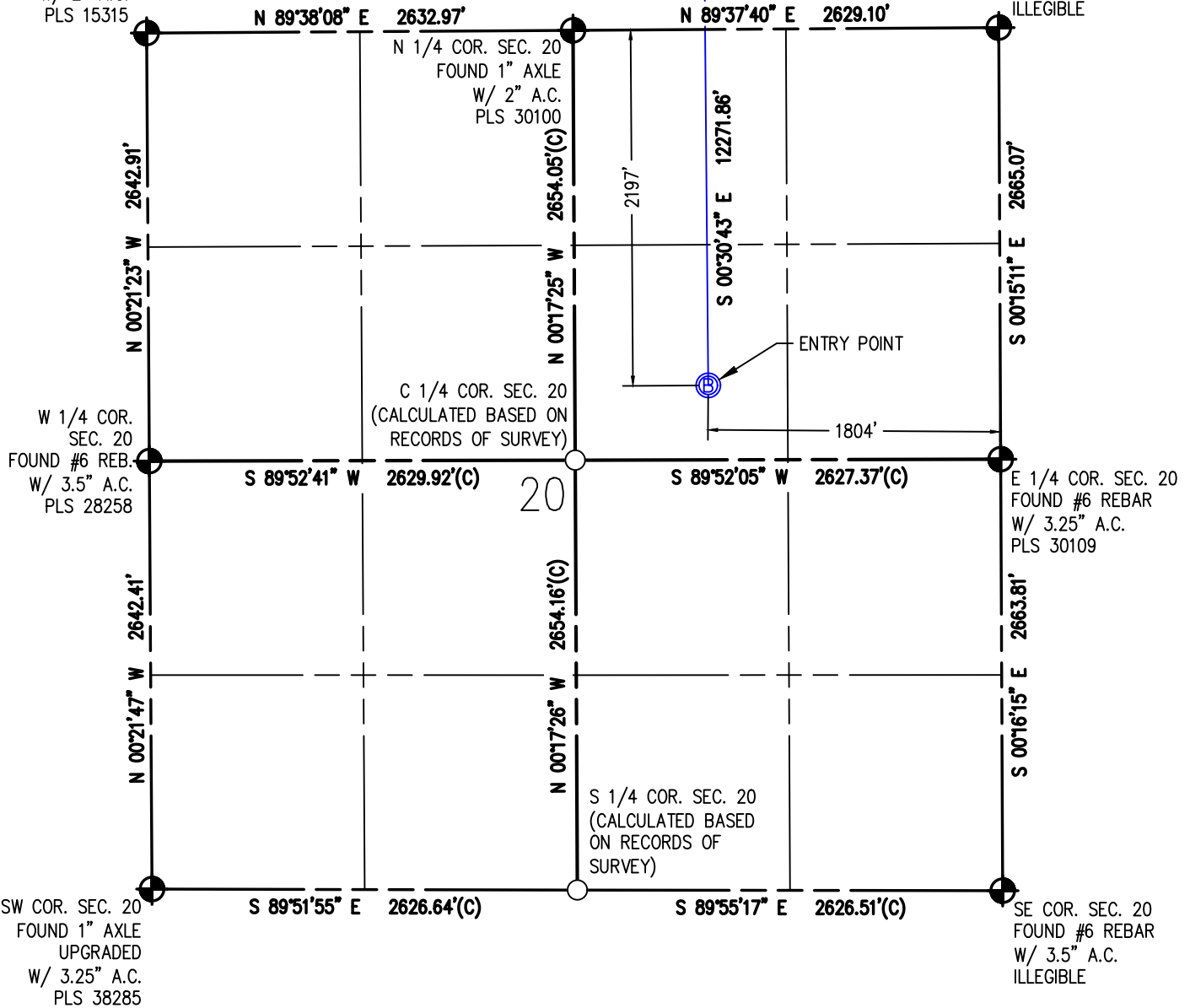
WELL LOCATION PLAT NORTHWEST A S20-25-13N

NW COR. SEC. 20
FOUND #6 REBAR
W/ 2" A.C.
PLS 15315

NW1/4 NW1/4 SEC. 9, T1S, R68W, 6TH P.M.

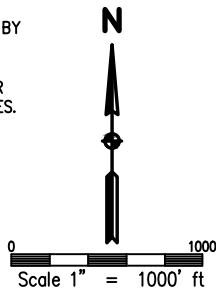
WELL BORE
CONTINUES INTO
SECTION 17
(SHEET 3)

NE COR. SEC. 20
FOUND 1.125" AXLE
W/ 2.5" A.C.
ILLEGIBLE



I HEREBY CERTIFY THAT THIS WELL LOCATION CERTIFICATE WAS PREPARED BY ME, OR UNDER MY DIRECT SUPERVISION, THAT THE FIELD WORK WAS COMPLETED ON 12/21/2017, THAT IT IS NOT A LAND SURVEY PLAT OR AN IMPROVEMENT SURVEY PLAT, AND THAT IT IS NOT TO BE RELED UPON FOR ESTABLISHMENT OF FENCE, BUILDING OR OTHER FUTURE IMPROVEMENT LINES.

AARON A. DEMO
Professional Land Surveyor Registration No. 38285
State of Colorado
FOR AND ON BEHALF OF BASELINE ENGINEERING CORP.



SURFACE LOCATION
SEC. 9, T1S, R68W
GROUND ELEVATION = 5314.1'
PDOP = 1.5
LATITUDE = 39.983191°
LONGITUDE = -105.012730°
1277' FNL, 867' FWL
ENTRY POINT LOCATION
SEC. 8, T1S, R68W
LATITUDE = 39.985370°
LONGITUDE = -105.022256°
480' FNL, 1800' FEL
BOTTOM HOLE LOCATION
SEC. 20, T1S, R68W
LATITUDE = 39.951691°
LONGITUDE = -105.022101°
2197' FNL, 1804' FEL

NOTES:

1. INDICATES SECTION CORNER
2. INDICATES CALCULATED CORNER
3. (C) INDICATES CALCULATED DIMENSION
4. ELEVATION BASED ON NAVD88 (GEOID12B)
5. BEARINGS DERIVED FROM COLORADO COORDINATE SYSTEM OF 1983 NORTH ZONE.
6. OPERATOR: TRAVIS WINNICKI
7. IMPROVEMENTS: SEE LOCATION DRAWING FOR ALL VISIBLE IMPROVEMENTS WITHIN 500' OF DISTURBED AREA.
8. WELL FOOTAGES ARE MEASURED AT RIGHT ANGLES TO THE SECTION LINES.

NEAREST CULTURAL ITEMS:

BUILDING: 816' SE
BUILDING UNIT: 1047' S
HIGH OCCUPANCY BUILDING UNIT: 5280'+
DESIGNATED OUTSIDE ACTIVITY AREA: 5280'+
PUBLIC ROAD: CO-470 ON RAMP 325' NW
ABOVE GROUND UTILITY: 1246' N
RAILROAD: 5280'+
PROPERTY LINE: 94' S
SURFACE USE: FARMLAND.
NEAREST EXISTING WELL: NORDSTROM 3-9 955' E



DRAWN BY	RPM	CHECKED BY	AAD
INITIAL SUBMITTAL	1/19/2017		
REVISED	N/A		
DRAWING SIZE	8.5" X 11"		
JOB NO.	EXT01S8B09-01		
SHEET	4 OF 4		

