



Project: Weld County, CO
Site: SEC 28, T8N-R67W
Well: Cherry Creek 8-67-28-27N
Wellbore: HZ
Design: Plan 3

Reference Details

Geodetic System: US State Plane 1983
Datum: North American Datum 1983
Ellipsoid: GRS 1980
Latitude: 40° 37' 41.650 N
Longitude: 104° 54' 18.749 W
Grid Convergence: 0.38° West
Ground Elevation: 5177.0
KB Elevation: Well @ 5203.0usft



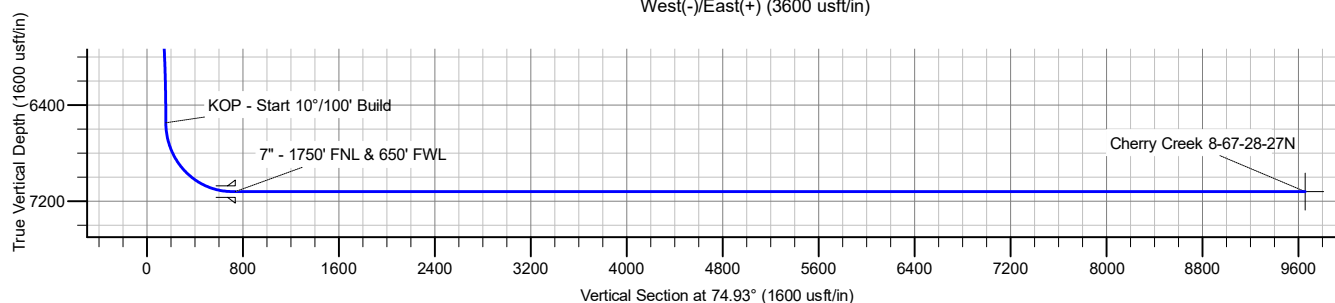
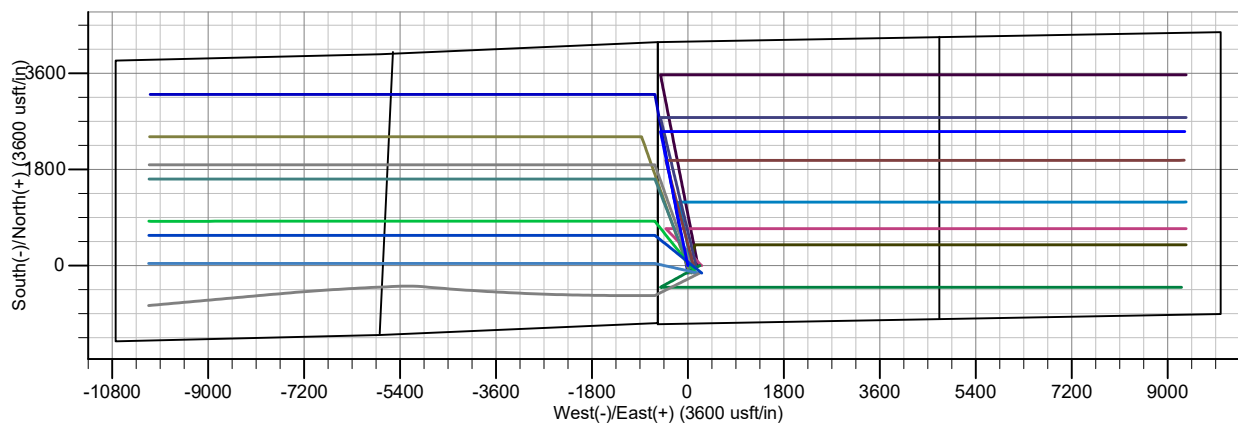
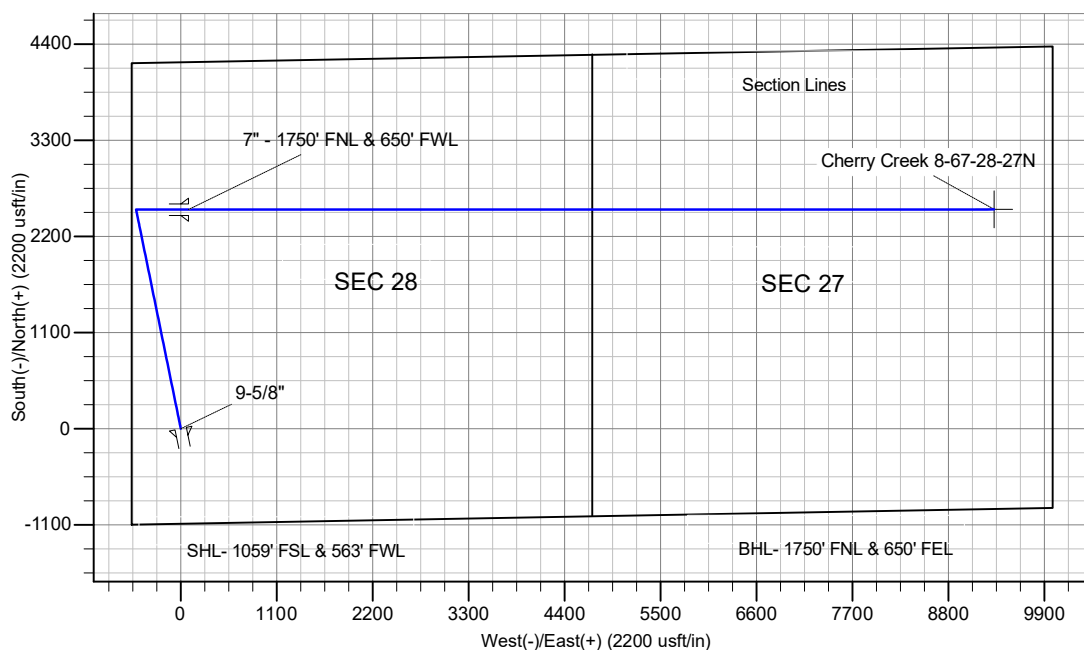
RPM Consulting, Inc.
1600 Broadway, Suite 1510
Denver, CO 80013
303-595-7625

SECTION DETAILS

MD	Inc	Azi	TVD	+N/-S	+E/-W	Dleg	TFace	VSect
0.0	0.00	0.00	0.0	0.0	0.0	0.00	0.00	0.0
1500.0	0.00	0.00	1500.0	0.0	0.0	0.00	0.00	0.0
2287.2	0.00	0.00	2287.2	0.0	0.0	0.00	0.00	0.0
2870.5	35.00	348.45	2834.9	169.2	-34.6	6.00	348.45	10.6
6733.5	35.00	348.45	5999.3	2340.0	-478.4	0.00	0.00	146.3
7316.8	0.00	0.00	6547.0	2509.2	-513.0	6.00	180.00	156.8
8216.8	90.00	90.00	7120.0	2509.2	60.0	10.00	90.00	710.1
8275.3	90.00	90.00	7120.0	2509.2	118.5	0.00	0.00	766.6
17480.7	90.00	90.00	7120.0	2509.7	9323.8	0.00	0.00	9655.7

CASING DETAILS

TVD	MD	Name
1500.0	1500.0	Surface
7120.0	8244.0	Intermediate



Enerplus Resources (USA) Corporation

**Weld County, CO
SEC 28, T8N-R67W
Cherry Creek 8-67-28-27N**

Hz

Plan: Plan 3

Standard Planning Report

23 February, 2018

Planning Report

Database:	EDM Server Database	Local Co-ordinate Reference:	Well Cherry Creek 8-67-28-27N
Company:	Enerplus Resources (USA) Corporation	TVD Reference:	Well @ 5203.0usft
Project:	Weld County, CO	MD Reference:	Well @ 5203.0usft
Site:	SEC 28, T8N-R67W	North Reference:	True
Well:	Cherry Creek 8-67-28-27N	Survey Calculation Method:	Minimum Curvature
Wellbore:	Hz		
Design:	Plan 3		

Project	Weld County, CO		
Map System:	US State Plane 1983	System Datum:	Mean Sea Level
Geo Datum:	North American Datum 1983		
Map Zone:	Colorado Northern Zone		

Site		SEC 28, T8N-R67W			
Site Position:		Northing:	1,472,262.06 usft	Latitude:	40° 37' 41.650 N
From:	Lat/Long	Easting:	3,165,096.77 usft	Longitude:	104° 54' 18.749 W
Position Uncertainty:	0.0 usft	Slot Radius:	13-3/16 "	Grid Convergence:	0.38 °

Well	Cherry Creek 8-67-28-27N					
Well Position	+N/-S	0.0 usft	Northing:	1,472,262.05 usft	Latitude:	40° 37' 41.650 N
	+E/-W	0.0 usft	Easting:	3,165,096.77 usft	Longitude:	104° 54' 18.749 W
Position Uncertainty		0.0 usft	Wellhead Elevation:	0.0 usft	Ground Level:	5,177.0 usft

Wellbore	Hz				
Magnetics	Model Name	Sample Date	Declination (°)	Dip Angle (°)	Field Strength (nT)
	IGRF2010	1/19/2017	8.20	67.02	52,643.37486087

Design	Plan 3			
Audit Notes:				
Version:	Phase:	PROTOTYPE	Tie On Depth:	0.0
Vertical Section:	Depth From (TVD) (usft)	+N/-S (usft)	+E/-W (usft)	Direction (°)
	0.0	0.0	0.0	74.93

Plan Survey Tool Program	Date	2/23/2018		
Depth From (usft)	Depth To (usft)	Survey (Wellbore)	Tool Name	Remarks
1	0.0	17,480.7 Plan 3 (Hz)	MWD	
			Geolink MWD	

Plan Sections										
Measured Depth (usft)	Inclination (°)	Azimuth (°)	Vertical Depth (usft)	+N/-S (usft)	+E/-W (usft)	Dogleg Rate (°/100usft)	Build Rate (°/100usft)	Turn Rate (°/100usft)	TFO (°)	Target
0.0	0.00	0.00	0.0	0.0	0.0	0.00	0.00	0.00	0.00	
1,500.0	0.00	0.00	1,500.0	0.0	0.0	0.00	0.00	0.00	0.00	
2,287.2	0.00	0.00	2,287.2	0.0	0.0	0.00	0.00	0.00	0.00	
2,870.5	35.00	348.45	2,834.9	169.2	-34.6	6.00	6.00	0.00	348.45	
6,733.5	35.00	348.45	5,999.3	2,340.0	-478.4	0.00	0.00	0.00	0.00	
7,316.8	0.00	0.00	6,547.0	2,509.2	-513.0	6.00	-6.00	0.00	180.00	
8,216.8	90.00	90.00	7,120.0	2,509.2	60.0	10.00	10.00	0.00	90.00	
8,275.3	90.00	90.00	7,120.0	2,509.2	118.5	0.00	0.00	0.00	0.00	
17,480.7	90.00	90.00	7,120.0	2,509.7	9,323.8	0.00	0.00	0.00	0.00	Cherry Creek 8-67-28

Planning Report

Database:	EDM Server Database	Local Co-ordinate Reference:	Well Cherry Creek 8-67-28-27N
Company:	Enerplus Resources (USA) Corporation	TVD Reference:	Well @ 5203.0usft
Project:	Weld County, CO	MD Reference:	Well @ 5203.0usft
Site:	SEC 28, T8N-R67W	North Reference:	True
Well:	Cherry Creek 8-67-28-27N	Survey Calculation Method:	Minimum Curvature
Wellbore:	Hz		
Design:	Plan 3		

Planned Survey									
Measured Depth (usft)	Inclination (°)	Azimuth (°)	Vertical Depth (usft)	+N/-S (usft)	+E/-W (usft)	Vertical Section (usft)	Dogleg Rate (°/100usft)	Build Rate (°/100usft)	Turn Rate (°/100usft)
0.0	0.00	0.00	0.0	0.0	0.0	0.0	0.00	0.00	0.00
100.0	0.00	0.00	100.0	0.0	0.0	0.0	0.00	0.00	0.00
200.0	0.00	0.00	200.0	0.0	0.0	0.0	0.00	0.00	0.00
300.0	0.00	0.00	300.0	0.0	0.0	0.0	0.00	0.00	0.00
400.0	0.00	0.00	400.0	0.0	0.0	0.0	0.00	0.00	0.00
500.0	0.00	0.00	500.0	0.0	0.0	0.0	0.00	0.00	0.00
600.0	0.00	0.00	600.0	0.0	0.0	0.0	0.00	0.00	0.00
700.0	0.00	0.00	700.0	0.0	0.0	0.0	0.00	0.00	0.00
800.0	0.00	0.00	800.0	0.0	0.0	0.0	0.00	0.00	0.00
900.0	0.00	0.00	900.0	0.0	0.0	0.0	0.00	0.00	0.00
1,000.0	0.00	0.00	1,000.0	0.0	0.0	0.0	0.00	0.00	0.00
1,100.0	0.00	0.00	1,100.0	0.0	0.0	0.0	0.00	0.00	0.00
1,200.0	0.00	0.00	1,200.0	0.0	0.0	0.0	0.00	0.00	0.00
1,300.0	0.00	0.00	1,300.0	0.0	0.0	0.0	0.00	0.00	0.00
1,400.0	0.00	0.00	1,400.0	0.0	0.0	0.0	0.00	0.00	0.00
1,500.0	0.00	0.00	1,500.0	0.0	0.0	0.0	0.00	0.00	0.00
9-5/8" - Surface									
1,600.0	0.00	0.00	1,600.0	0.0	0.0	0.0	0.00	0.00	0.00
1,700.0	0.00	0.00	1,700.0	0.0	0.0	0.0	0.00	0.00	0.00
1,800.0	0.00	0.00	1,800.0	0.0	0.0	0.0	0.00	0.00	0.00
1,900.0	0.00	0.00	1,900.0	0.0	0.0	0.0	0.00	0.00	0.00
2,000.0	0.00	0.00	2,000.0	0.0	0.0	0.0	0.00	0.00	0.00
2,100.0	0.00	0.00	2,100.0	0.0	0.0	0.0	0.00	0.00	0.00
2,200.0	0.00	0.00	2,200.0	0.0	0.0	0.0	0.00	0.00	0.00
2,287.2	0.00	0.00	2,287.2	0.0	0.0	0.0	0.00	0.00	0.00
Begin Nudge									
2,300.0	0.77	348.45	2,300.0	0.1	0.0	0.0	6.00	6.00	0.00
2,400.0	6.77	348.45	2,399.7	6.5	-1.3	0.4	6.00	6.00	0.00
2,500.0	12.77	348.45	2,498.2	23.1	-4.7	1.4	6.00	6.00	0.00
2,600.0	18.77	348.45	2,594.4	49.7	-10.2	3.1	6.00	6.00	0.00
2,700.0	24.77	348.45	2,687.3	86.1	-17.6	5.4	6.00	6.00	0.00
2,800.0	30.77	348.45	2,775.7	131.7	-26.9	8.2	6.00	6.00	0.00
2,870.5	35.00	348.45	2,834.9	169.2	-34.6	10.6	6.00	6.00	0.00
2,900.0	35.00	348.45	2,859.1	185.8	-38.0	11.6	0.00	0.00	0.00
3,000.0	35.00	348.45	2,941.0	242.0	-49.5	15.1	0.00	0.00	0.00
3,100.0	35.00	348.45	3,022.9	298.1	-61.0	18.6	0.00	0.00	0.00
3,200.0	35.00	348.45	3,104.8	354.3	-72.4	22.1	0.00	0.00	0.00
3,300.0	35.00	348.45	3,186.7	410.5	-83.9	25.7	0.00	0.00	0.00
3,400.0	35.00	348.45	3,268.6	466.7	-95.4	29.2	0.00	0.00	0.00
3,500.0	35.00	348.45	3,350.6	522.9	-106.9	32.7	0.00	0.00	0.00
3,600.0	35.00	348.45	3,432.5	579.1	-118.4	36.2	0.00	0.00	0.00
3,700.0	35.00	348.45	3,514.4	635.3	-129.9	39.7	0.00	0.00	0.00
3,800.0	35.00	348.45	3,596.3	691.5	-141.4	43.2	0.00	0.00	0.00
3,900.0	35.00	348.45	3,678.2	747.7	-152.9	46.7	0.00	0.00	0.00
4,000.0	35.00	348.45	3,760.1	803.9	-164.4	50.2	0.00	0.00	0.00
4,100.0	35.00	348.45	3,842.0	860.1	-175.8	53.8	0.00	0.00	0.00
4,200.0	35.00	348.45	3,924.0	916.3	-187.3	57.3	0.00	0.00	0.00
4,300.0	35.00	348.45	4,005.9	972.5	-198.8	60.8	0.00	0.00	0.00
4,400.0	35.00	348.45	4,087.8	1,028.7	-210.3	64.3	0.00	0.00	0.00
4,500.0	35.00	348.45	4,169.7	1,084.9	-221.8	67.8	0.00	0.00	0.00
4,600.0	35.00	348.45	4,251.6	1,141.1	-233.3	71.3	0.00	0.00	0.00
4,700.0	35.00	348.45	4,333.5	1,197.3	-244.8	74.8	0.00	0.00	0.00
4,800.0	35.00	348.45	4,415.5	1,253.5	-256.3	78.3	0.00	0.00	0.00

Planning Report

Database:	EDM Server Database	Local Co-ordinate Reference:	Well Cherry Creek 8-67-28-27N
Company:	Enerplus Resources (USA) Corporation	TVD Reference:	Well @ 5203.0usft
Project:	Weld County, CO	MD Reference:	Well @ 5203.0usft
Site:	SEC 28, T8N-R67W	North Reference:	True
Well:	Cherry Creek 8-67-28-27N	Survey Calculation Method:	Minimum Curvature
Wellbore:	Hz		
Design:	Plan 3		

Planned Survey									
Measured Depth (usft)	Inclination (°)	Azimuth (°)	Vertical Depth (usft)	+N/-S (usft)	+E/-W (usft)	Vertical Section (usft)	Dogleg Rate (°/100usft)	Build Rate (°/100usft)	Turn Rate (°/100usft)
4,900.0	35.00	348.45	4,497.4	1,309.7	-267.8	81.9	0.00	0.00	0.00
5,000.0	35.00	348.45	4,579.3	1,365.9	-279.2	85.4	0.00	0.00	0.00
5,100.0	35.00	348.45	4,661.2	1,422.1	-290.7	88.9	0.00	0.00	0.00
5,200.0	35.00	348.45	4,743.1	1,478.2	-302.2	92.4	0.00	0.00	0.00
5,300.0	35.00	348.45	4,825.0	1,534.4	-313.7	95.9	0.00	0.00	0.00
5,400.0	35.00	348.45	4,906.9	1,590.6	-325.2	99.4	0.00	0.00	0.00
5,500.0	35.00	348.45	4,988.9	1,646.8	-336.7	102.9	0.00	0.00	0.00
5,600.0	35.00	348.45	5,070.8	1,703.0	-348.2	106.4	0.00	0.00	0.00
5,700.0	35.00	348.45	5,152.7	1,759.2	-359.7	110.0	0.00	0.00	0.00
5,800.0	35.00	348.45	5,234.6	1,815.4	-371.2	113.5	0.00	0.00	0.00
5,900.0	35.00	348.45	5,316.5	1,871.6	-382.6	117.0	0.00	0.00	0.00
6,000.0	35.00	348.45	5,398.4	1,927.8	-394.1	120.5	0.00	0.00	0.00
6,100.0	35.00	348.45	5,480.3	1,984.0	-405.6	124.0	0.00	0.00	0.00
6,200.0	35.00	348.45	5,562.3	2,040.2	-417.1	127.5	0.00	0.00	0.00
6,300.0	35.00	348.45	5,644.2	2,096.4	-428.6	131.0	0.00	0.00	0.00
6,400.0	35.00	348.45	5,726.1	2,152.6	-440.1	134.5	0.00	0.00	0.00
6,500.0	35.00	348.45	5,808.0	2,208.8	-451.6	138.1	0.00	0.00	0.00
6,600.0	35.00	348.45	5,889.9	2,265.0	-463.1	141.6	0.00	0.00	0.00
6,700.0	35.00	348.45	5,971.8	2,321.2	-474.6	145.1	0.00	0.00	0.00
6,733.5	35.00	348.45	5,999.3	2,340.0	-478.4	146.3	0.00	0.00	0.00
6,800.0	31.01	348.45	6,055.0	2,375.5	-485.7	148.5	6.00	-6.00	0.00
6,900.0	25.01	348.45	6,143.3	2,421.5	-495.1	151.3	6.00	-6.00	0.00
7,000.0	19.01	348.45	6,236.0	2,458.2	-502.6	153.6	6.00	-6.00	0.00
7,100.0	13.01	348.45	6,332.0	2,485.2	-508.1	155.3	6.00	-6.00	0.00
7,200.0	7.01	348.45	6,430.5	2,502.2	-511.6	156.4	6.00	-6.00	0.00
7,300.0	1.01	348.45	6,530.2	2,509.0	-513.0	156.8	6.00	-6.00	0.00
7,316.8	0.00	348.45	6,547.0	2,509.2	-513.0	156.8	6.00	-6.00	0.00
KOP - Start 10°/100' Build									
7,400.0	8.32	90.00	6,629.9	2,509.2	-507.0	162.6	10.00	10.00	122.06
7,500.0	18.32	90.00	6,727.1	2,509.2	-484.0	184.9	10.00	10.00	0.00
7,600.0	28.32	90.00	6,818.8	2,509.2	-444.4	223.0	10.00	10.00	0.00
7,700.0	38.32	90.00	6,902.2	2,509.2	-389.6	276.0	10.00	10.00	0.00
7,800.0	48.32	90.00	6,974.9	2,509.2	-321.1	342.2	10.00	10.00	0.00
7,900.0	58.32	90.00	7,034.6	2,509.2	-241.0	419.5	10.00	10.00	0.00
8,000.0	68.32	90.00	7,079.4	2,509.2	-151.7	505.7	10.00	10.00	0.00
8,100.0	78.32	90.00	7,108.1	2,509.2	-56.1	598.1	10.00	10.00	0.00
8,200.0	88.32	90.00	7,119.7	2,509.2	43.1	693.8	10.00	10.00	0.00
8,216.8	90.00	90.00	7,120.0	2,509.2	60.0	710.1	10.00	10.00	0.00
8,244.0	90.00	90.00	7,120.0	2,509.2	87.1	736.3	0.00	0.00	0.00
7" - 1750' FNL & 650' FWL - Intermediate									
8,275.3	90.00	90.00	7,120.0	2,509.2	118.5	766.6	0.00	0.00	0.00
8,300.0	90.00	90.00	7,120.0	2,509.2	143.1	790.4	0.00	0.00	0.00
8,400.0	90.00	90.00	7,120.0	2,509.2	243.1	887.0	0.00	0.00	0.00
8,500.0	90.00	90.00	7,120.0	2,509.2	343.1	983.5	0.00	0.00	0.00
8,600.0	90.00	90.00	7,120.0	2,509.2	443.1	1,080.1	0.00	0.00	0.00
8,700.0	90.00	90.00	7,120.0	2,509.2	543.1	1,176.7	0.00	0.00	0.00
8,800.0	90.00	90.00	7,120.0	2,509.2	643.1	1,273.2	0.00	0.00	0.00
8,900.0	90.00	90.00	7,120.0	2,509.2	743.1	1,369.8	0.00	0.00	0.00
9,000.0	90.00	90.00	7,120.0	2,509.2	843.1	1,466.4	0.00	0.00	0.00
9,100.0	90.00	90.00	7,120.0	2,509.2	943.1	1,562.9	0.00	0.00	0.00
9,200.0	90.00	90.00	7,120.0	2,509.2	1,043.1	1,659.5	0.00	0.00	0.00
9,300.0	90.00	90.00	7,120.0	2,509.2	1,143.1	1,756.0	0.00	0.00	0.00
9,400.0	90.00	90.00	7,120.0	2,509.2	1,243.1	1,852.6	0.00	0.00	0.00
9,500.0	90.00	90.00	7,120.0	2,509.2	1,343.1	1,949.2	0.00	0.00	0.00

Planning Report

Database:	EDM Server Database	Local Co-ordinate Reference:	Well Cherry Creek 8-67-28-27N
Company:	Enerplus Resources (USA) Corporation	TVD Reference:	Well @ 5203.0usft
Project:	Weld County, CO	MD Reference:	Well @ 5203.0usft
Site:	SEC 28, T8N-R67W	North Reference:	True
Well:	Cherry Creek 8-67-28-27N	Survey Calculation Method:	Minimum Curvature
Wellbore:	Hz		
Design:	Plan 3		

Planned Survey										
Measured Depth (usft)	Inclination (°)	Azimuth (°)	Vertical Depth (usft)	+N/-S (usft)	+E/-W (usft)	Vertical Section (usft)	Dogleg Rate (°/100usft)	Build Rate (°/100usft)	Turn Rate (°/100usft)	
9,600.0	90.00	90.00	7,120.0	2,509.2	1,443.1	2,045.7	0.00	0.00	0.00	
9,700.0	90.00	90.00	7,120.0	2,509.2	1,543.1	2,142.3	0.00	0.00	0.00	
9,800.0	90.00	90.00	7,120.0	2,509.2	1,643.1	2,238.9	0.00	0.00	0.00	
9,900.0	90.00	90.00	7,120.0	2,509.2	1,743.1	2,335.4	0.00	0.00	0.00	
10,000.0	90.00	90.00	7,120.0	2,509.2	1,843.1	2,432.0	0.00	0.00	0.00	
10,100.0	90.00	90.00	7,120.0	2,509.2	1,943.1	2,528.5	0.00	0.00	0.00	
10,200.0	90.00	90.00	7,120.0	2,509.2	2,043.1	2,625.1	0.00	0.00	0.00	
10,300.0	90.00	90.00	7,120.0	2,509.2	2,143.1	2,721.7	0.00	0.00	0.00	
10,400.0	90.00	90.00	7,120.0	2,509.2	2,243.1	2,818.2	0.00	0.00	0.00	
10,500.0	90.00	90.00	7,120.0	2,509.2	2,343.1	2,914.8	0.00	0.00	0.00	
10,600.0	90.00	90.00	7,120.0	2,509.2	2,443.1	3,011.4	0.00	0.00	0.00	
10,700.0	90.00	90.00	7,120.0	2,509.2	2,543.1	3,107.9	0.00	0.00	0.00	
10,800.0	90.00	90.00	7,120.0	2,509.2	2,643.1	3,204.5	0.00	0.00	0.00	
10,900.0	90.00	90.00	7,120.0	2,509.2	2,743.1	3,301.0	0.00	0.00	0.00	
11,000.0	90.00	90.00	7,120.0	2,509.2	2,843.1	3,397.6	0.00	0.00	0.00	
11,100.0	90.00	90.00	7,120.0	2,509.2	2,943.1	3,494.2	0.00	0.00	0.00	
11,200.0	90.00	90.00	7,120.0	2,509.2	3,043.1	3,590.7	0.00	0.00	0.00	
11,300.0	90.00	90.00	7,120.0	2,509.2	3,143.1	3,687.3	0.00	0.00	0.00	
11,400.0	90.00	90.00	7,120.0	2,509.2	3,243.1	3,783.9	0.00	0.00	0.00	
11,500.0	90.00	90.00	7,120.0	2,509.2	3,343.1	3,880.4	0.00	0.00	0.00	
11,600.0	90.00	90.00	7,120.0	2,509.2	3,443.1	3,977.0	0.00	0.00	0.00	
11,700.0	90.00	90.00	7,120.0	2,509.2	3,543.1	4,073.6	0.00	0.00	0.00	
11,800.0	90.00	90.00	7,120.0	2,509.2	3,643.1	4,170.1	0.00	0.00	0.00	
11,900.0	90.00	90.00	7,120.0	2,509.2	3,743.1	4,266.7	0.00	0.00	0.00	
12,000.0	90.00	90.00	7,120.0	2,509.2	3,843.1	4,363.2	0.00	0.00	0.00	
12,100.0	90.00	90.00	7,120.0	2,509.2	3,943.1	4,459.8	0.00	0.00	0.00	
12,200.0	90.00	90.00	7,120.0	2,509.2	4,043.1	4,556.4	0.00	0.00	0.00	
12,300.0	90.00	90.00	7,120.0	2,509.2	4,143.1	4,652.9	0.00	0.00	0.00	
12,400.0	90.00	90.00	7,120.0	2,509.2	4,243.1	4,749.5	0.00	0.00	0.00	
12,500.0	90.00	90.00	7,120.0	2,509.2	4,343.1	4,846.1	0.00	0.00	0.00	
12,600.0	90.00	90.00	7,120.0	2,509.2	4,443.1	4,942.6	0.00	0.00	0.00	
12,700.0	90.00	90.00	7,120.0	2,509.2	4,543.1	5,039.2	0.00	0.00	0.00	
12,800.0	90.00	90.00	7,120.0	2,509.2	4,643.1	5,135.7	0.00	0.00	0.00	
12,900.0	90.00	90.00	7,120.0	2,509.2	4,743.1	5,232.3	0.00	0.00	0.00	
13,000.0	90.00	90.00	7,120.0	2,509.2	4,843.1	5,328.9	0.00	0.00	0.00	
13,100.0	90.00	90.00	7,120.0	2,509.2	4,943.1	5,425.4	0.00	0.00	0.00	
13,200.0	90.00	90.00	7,120.0	2,509.2	5,043.1	5,522.0	0.00	0.00	0.00	
13,300.0	90.00	90.00	7,120.0	2,509.2	5,143.1	5,618.6	0.00	0.00	0.00	
13,400.0	90.00	90.00	7,120.0	2,509.2	5,243.1	5,715.1	0.00	0.00	0.00	
13,500.0	90.00	90.00	7,120.0	2,509.2	5,343.1	5,811.7	0.00	0.00	0.00	
13,600.0	90.00	90.00	7,120.0	2,509.2	5,443.1	5,908.2	0.00	0.00	0.00	
13,700.0	90.00	90.00	7,120.0	2,509.2	5,543.1	6,004.8	0.00	0.00	0.00	
13,800.0	90.00	90.00	7,120.0	2,509.2	5,643.1	6,101.4	0.00	0.00	0.00	
13,900.0	90.00	90.00	7,120.0	2,509.2	5,743.1	6,197.9	0.00	0.00	0.00	
14,000.0	90.00	90.00	7,120.0	2,509.2	5,843.1	6,294.5	0.00	0.00	0.00	
14,100.0	90.00	90.00	7,120.0	2,509.2	5,943.1	6,391.1	0.00	0.00	0.00	
14,200.0	90.00	90.00	7,120.0	2,509.2	6,043.1	6,487.6	0.00	0.00	0.00	
14,300.0	90.00	90.00	7,120.0	2,509.2	6,143.1	6,584.2	0.00	0.00	0.00	
14,400.0	90.00	90.00	7,120.0	2,509.2	6,243.1	6,680.7	0.00	0.00	0.00	
14,500.0	90.00	90.00	7,120.0	2,509.2	6,343.1	6,777.3	0.00	0.00	0.00	
14,600.0	90.00	90.00	7,120.0	2,509.2	6,443.1	6,873.9	0.00	0.00	0.00	
14,700.0	90.00	90.00	7,120.0	2,509.2	6,543.1	6,970.4	0.00	0.00	0.00	
14,800.0	90.00	90.00	7,120.0	2,509.2	6,643.1	7,067.0	0.00	0.00	0.00	
14,900.0	90.00	90.00	7,120.0	2,509.2	6,743.1	7,163.6	0.00	0.00	0.00	

Planning Report

Database:	EDM Server Database	Local Co-ordinate Reference:	Well Cherry Creek 8-67-28-27N
Company:	Enerplus Resources (USA) Corporation	TVD Reference:	Well @ 5203.0usft
Project:	Weld County, CO	MD Reference:	Well @ 5203.0usft
Site:	SEC 28, T8N-R67W	North Reference:	True
Well:	Cherry Creek 8-67-28-27N	Survey Calculation Method:	Minimum Curvature
Wellbore:	Hz		
Design:	Plan 3		

Planned Survey										
Measured Depth (usft)	Inclination (°)	Azimuth (°)	Vertical Depth (usft)	+N/-S (usft)	+E/-W (usft)	Vertical Section (usft)	Dogleg Rate (°/100usft)	Build Rate (°/100usft)	Turn Rate (°/100usft)	
15,000.0	90.00	90.00	7,120.0	2,509.2	6,843.1	7,260.1	0.00	0.00	0.00	
15,100.0	90.00	90.00	7,120.0	2,509.2	6,943.1	7,356.7	0.00	0.00	0.00	
15,200.0	90.00	90.00	7,120.0	2,509.2	7,043.1	7,453.3	0.00	0.00	0.00	
15,300.0	90.00	90.00	7,120.0	2,509.2	7,143.1	7,549.8	0.00	0.00	0.00	
15,400.0	90.00	90.00	7,120.0	2,509.2	7,243.1	7,646.4	0.00	0.00	0.00	
15,500.0	90.00	90.00	7,120.0	2,509.2	7,343.1	7,742.9	0.00	0.00	0.00	
15,600.0	90.00	90.00	7,120.0	2,509.2	7,443.1	7,839.5	0.00	0.00	0.00	
15,700.0	90.00	90.00	7,120.0	2,509.2	7,543.1	7,936.1	0.00	0.00	0.00	
15,800.0	90.00	90.00	7,120.0	2,509.2	7,643.1	8,032.6	0.00	0.00	0.00	
15,900.0	90.00	90.00	7,120.0	2,509.2	7,743.1	8,129.2	0.00	0.00	0.00	
16,000.0	90.00	90.00	7,120.0	2,509.2	7,843.1	8,225.8	0.00	0.00	0.00	
16,100.0	90.00	90.00	7,120.0	2,509.2	7,943.1	8,322.3	0.00	0.00	0.00	
16,200.0	90.00	90.00	7,120.0	2,509.2	8,043.1	8,418.9	0.00	0.00	0.00	
16,300.0	90.00	90.00	7,120.0	2,509.2	8,143.1	8,515.4	0.00	0.00	0.00	
16,400.0	90.00	90.00	7,120.0	2,509.2	8,243.1	8,612.0	0.00	0.00	0.00	
16,500.0	90.00	90.00	7,120.0	2,509.2	8,343.1	8,708.6	0.00	0.00	0.00	
16,600.0	90.00	90.00	7,120.0	2,509.2	8,443.1	8,805.1	0.00	0.00	0.00	
16,700.0	90.00	90.00	7,120.0	2,509.2	8,543.1	8,901.7	0.00	0.00	0.00	
16,800.0	90.00	90.00	7,120.0	2,509.2	8,643.1	8,998.3	0.00	0.00	0.00	
16,900.0	90.00	90.00	7,120.0	2,509.2	8,743.1	9,094.8	0.00	0.00	0.00	
17,000.0	90.00	90.00	7,120.0	2,509.2	8,843.1	9,191.4	0.00	0.00	0.00	
17,100.0	90.00	90.00	7,120.0	2,509.2	8,943.1	9,287.9	0.00	0.00	0.00	
17,200.0	90.00	90.00	7,120.0	2,509.2	9,043.1	9,384.5	0.00	0.00	0.00	
17,300.0	90.00	90.00	7,120.0	2,509.2	9,143.1	9,481.1	0.00	0.00	0.00	
17,400.0	90.00	90.00	7,120.0	2,509.2	9,243.1	9,577.6	0.00	0.00	0.00	
17,480.7	90.00	90.00	7,120.0	2,509.2	9,323.8	9,655.6	0.00	0.00	0.00	
Total Depth - Cherry Creek 8-67-28-27N										

Design Targets									
Target Name	Dip Angle (°)	Dip Dir. (°)	TVD (usft)	+N/-S (usft)	+E/-W (usft)	Northing (usft)	Easting (usft)	Latitude	Longitude
- hit/miss target									
- Shape									
Cherry Creek 8-67-28-27N	0.00	0.00	7,120.0	2,509.7	9,323.8	1,474,834.27	3,174,403.56	40° 38' 6.432 N	104° 52' 17.810 W
- plan misses target center by 0.5usft at 17480.7usft MD (7120.0 TVD, 2509.2 N, 9323.8 E)									
- Point									

Casing Points					
Measured Depth (usft)	Vertical Depth (usft)	Name	Casing Diameter (")	Hole Diameter (")	
1,500.0	1,500.0	Surface	9-5/8	9-5/8	
8,244.0	7,120.0	Intermediate	7	7	

Planning Report

Database:	EDM Server Database	Local Co-ordinate Reference:	Well Cherry Creek 8-67-28-27N
Company:	Enerplus Resources (USA) Corporation	TVD Reference:	Well @ 5203.0usft
Project:	Weld County, CO	MD Reference:	Well @ 5203.0usft
Site:	SEC 28, T8N-R67W	North Reference:	True
Well:	Cherry Creek 8-67-28-27N	Survey Calculation Method:	Minimum Curvature
Wellbore:	Hz		
Design:	Plan 3		

Plan Annotations					
Measured Depth (usft)	Vertical Depth (usft)	Local Coordinates		Comment	
		+N/-S (usft)	+E/-W (usft)		
1,500.0	1,500.0	0.0	0.0	9-5/8"	
2,287.2	2,287.2	0.0	0.0	Begin Nudge	
7,316.8	6,547.0	2,509.2	-513.0	KOP - Start 10°/100' Build	
8,244.0	7,120.0	2,509.2	87.1	7" - 1750' FNL & 650' FWL	
17,480.7	7,120.0	2,509.2	9,323.8	Total Depth	