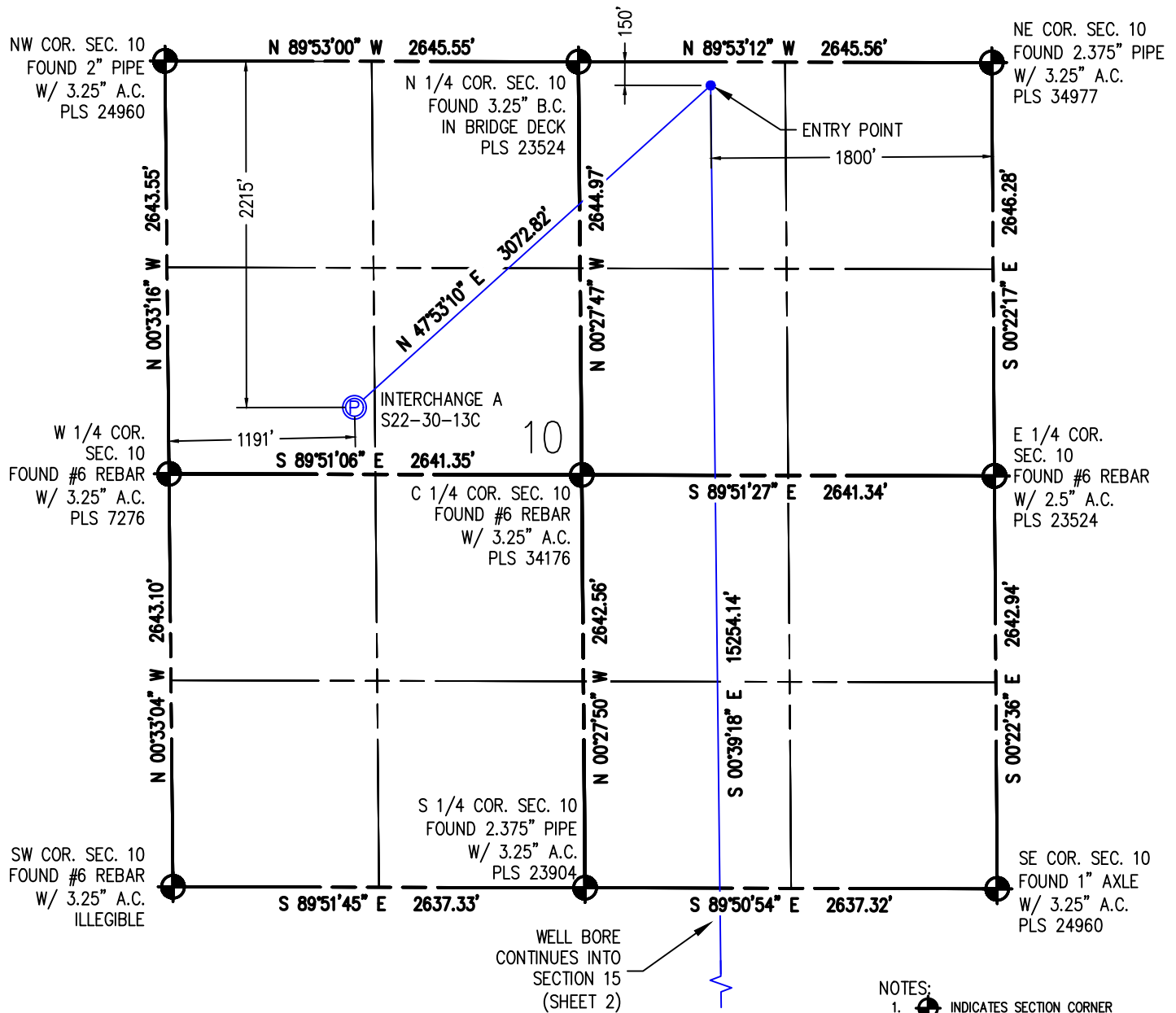


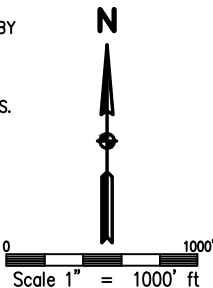
# WELL LOCATION PLAT INTERCHANGE A S22-30-13C

SW1/4 NW1/4 SEC. 10, T1S, R68W, 6TH P.M.



I HEREBY CERTIFY THAT THIS WELL LOCATION CERTIFICATE WAS PREPARED BY ME, OR UNDER MY DIRECT SUPERVISION, THAT THE FIELD WORK WAS COMPLETED ON 9/28/2017, THAT IT IS NOT A LAND SURVEY PLAT OR AN IMPROVEMENT SURVEY PLAT, AND THAT IT IS NOT TO BE RELIED UPON FOR ESTABLISHMENT OF FENCE, BUILDING OR OTHER FUTURE IMPROVEMENT LINES.

AARON A. DEMO  
Professional Land Surveyor Registration No. 38285  
State of Colorado  
FOR AND ON BEHALF OF BASELINE ENGINEERING CORP.



**SURFACE LOCATION**  
SEC. 10, T1S, R68W  
GROUND ELEVATION = 5231.7'  
PDOP = 1.4  
LATITUDE = 39.980565°  
LONGITUDE = -104.992944°  
2215' FNL, 1191' FWL  
**ENTRY POINT LOCATION**  
SEC. 10, T1S, R68W  
LATITUDE = 39.986184°  
LONGITUDE = -104.984769°  
150' FNL, 1800' FEL  
**BOTTOM HOLE LOCATION**  
SEC. 22, T1S, R68W  
LATITUDE = 39.944321°  
LONGITUDE = -104.984464°  
460' FSL, 1754' FEL

## NOTES:

1. INDICATES SECTION CORNER
2. INDICATES CALCULATED CORNER
3. (C) INDICATES CALCULATED DIMENSION
4. ELEVATION BASED ON NAVD88 (GEOID12B)
5. BEARINGS DERIVED FROM COLORADO COORDINATE SYSTEM OF 1983 NAD83 ZONE.
6. OPERATOR: TRAVIS WINNICKI
7. IMPROVEMENTS: SEE LOCATION DRAWING FOR ALL VISIBLE IMPROVEMENTS WITHIN 500' OF DISTURBED AREA.
8. WELL FOOTAGES ARE MEASURED AT RIGHT ANGLES TO THE SECTION LINES.

## NEAREST CULTURAL ITEMS:

BUILDING: 1046' S  
BUILDING UNIT: 1328' W  
HIGH OCCUPANCY BUILDING UNIT: 5280' +  
DESIGNATED OUTSIDE ACTIVITY AREA: 5280' +  
PUBLIC ROAD: 1-25 ON RAMP 364' NE  
ABOVE GROUND UTILITY: 1182' W  
RAILROAD: 5280' +  
PROPERTY LINE: 279' NE  
SURFACE USE: FARMLAND.  
NEAREST EXISTING WELL: BEYER MA 10-5 577' NW



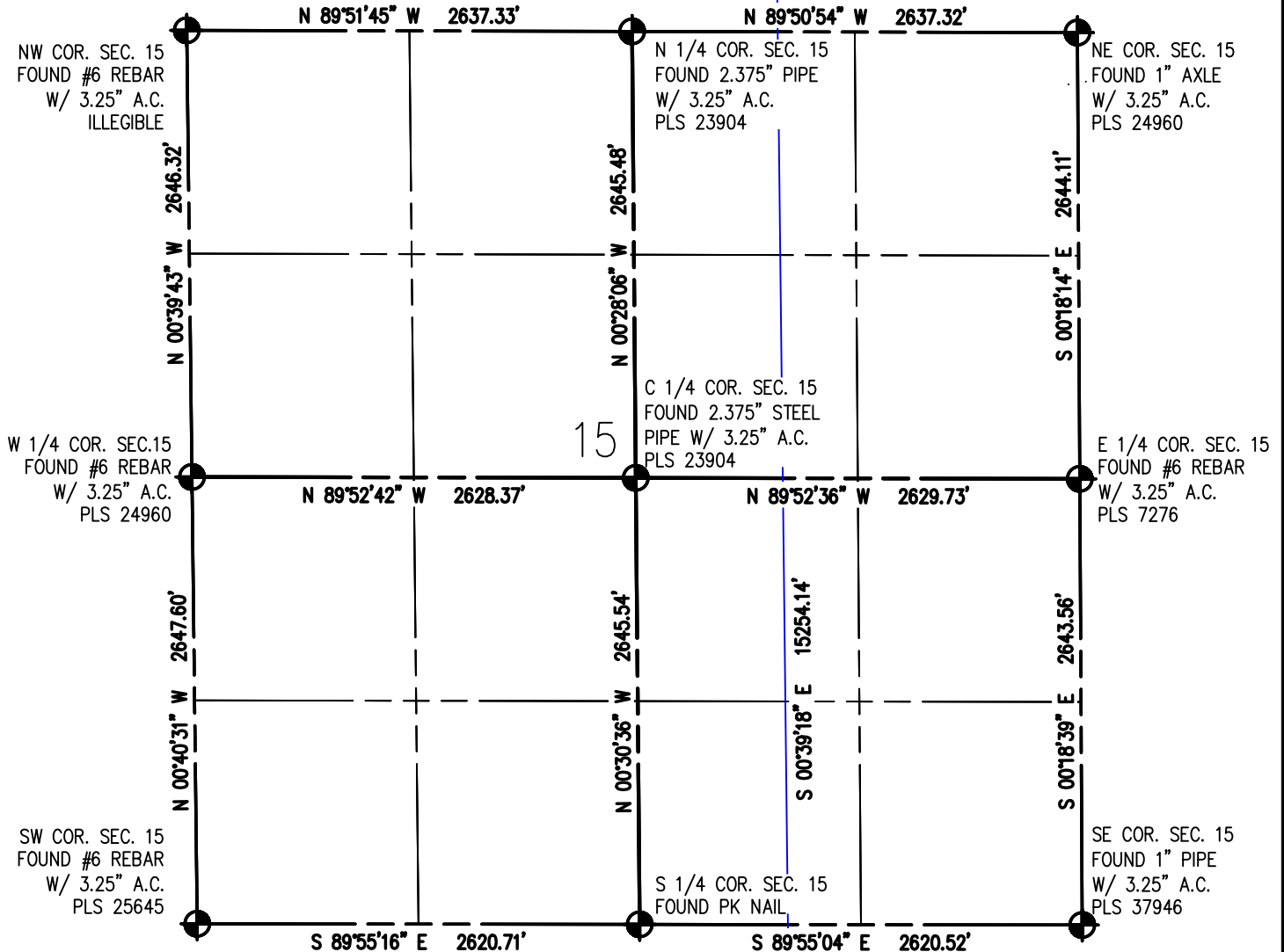
DRAWN BY	RPM	CHECKED BY	AAD
INITIAL SUBMITTAL	1/19/2018		
REVISED	N/A		
DRAWING SIZE	8.5" X 11"		
JOB NO.	EXT01S08W10-03		
SHEET	1 OF 3		



# WELL LOCATION PLAT INTERCHANGE A S22-30-13C

SW1/4 NW1/4 SEC. 10, T1S, R68W, 6TH P.M.

WELL BORE  
CONTINUES INTO  
SECTION 10  
(SHEET 1)



WELL BORE  
CONTINUES INTO  
SECTION 22  
(SHEET 3)

I HEREBY CERTIFY THAT THIS WELL LOCATION CERTIFICATE WAS PREPARED BY ME, OR UNDER MY DIRECT SUPERVISION, THAT THE FIELD WORK WAS COMPLETED ON 9/28/2017, THAT IT IS NOT A LAND SURVEY PLAT OR AN IMPROVEMENT SURVEY PLAT, AND THAT IT IS NOT TO BE RELIED UPON FOR ESTABLISHMENT OF FENCE, BUILDING OR OTHER FUTURE IMPROVEMENT LINES.

AARON A. DEMO  
Professional Land Surveyor Registration No. 38285  
State of Colorado  
FOR AND ON BEHALF OF BASELINE ENGINEERING CORP.

N

0 1000'  
Scale 1" = 1000' ft

SURFACE LOCATION  
SEC. 10, T1S, R68W  
GROUND ELEVATION = 5231.7'  
PDOP = 1.4  
LATITUDE = 39.980565"  
LONGITUDE = -104.992944"  
2215' FNL, 1191' FWL  
ENTRY POINT LOCATION  
SEC. 10, T1S, R68W  
LATITUDE = 39.986184"  
LONGITUDE = -104.984769"  
150' FNL, 1800' FEL  
BOTTOM HOLE LOCATION  
SEC. 22, T1S, R68W  
LATITUDE = 39.944321"  
LONGITUDE = -104.984464"  
460' FSL, 1754' FEL

## NOTES:

1. ● INDICATES SECTION CORNER
2. ○ INDICATES CALCULATED CORNER
3. (C) INDICATES CALCULATED DIMENSION
4. ELEVATION BASED ON NAVD88 (GEOID12B)
5. BEARINGS DERIVED FROM COLORADO COORDINATE SYSTEM OF 1983 NAD83 ZONE.
6. OPERATOR: TRAVIS WINNICKI
7. IMPROVEMENTS: SEE LOCATION DRAWING FOR ALL VISIBLE IMPROVEMENTS WITHIN 500' OF DISTURBED AREA.
8. WELL FOOTAGES ARE MEASURED AT RIGHT ANGLES TO THE SECTION LINES.

## NEAREST CULTURAL ITEMS:

BUILDING: 1046' S  
BUILDING UNIT: 1328' W  
HIGH OCCUPANCY BUILDING UNIT: 5280' +  
DESIGNATED OUTSIDE ACTIVITY AREA: 5280' +  
PUBLIC ROAD: 1-25 ON RAMP 364' NE  
ABOVE GROUND UTILITY: 1182' W  
RAILROAD: 5280' +  
PROPERTY LINE: 279' NE  
SURFACE USE: FARMLAND  
NEAREST EXISTING WELL: BEYER MA 10-5 577' NW



DRAWN BY	RPM	CHECKED BY	AAD
INITIAL SUBMITTAL	1/19/2018		
REVISED	N/A		
DRAWING SIZE	8.5" X 11"		
JOB NO.	EXT01S08W10-03		
SHEET	2 OF 3		



# WELL LOCATION PLAT INTERCHANGE A S22-30-13C

SW1/4 NW1/4 SEC. 10, T1S, R68W, 6TH P.M.

WELL BORE  
CONTINUES INTO  
SECTION 15  
(SHEET 2)

NW COR. SEC. 22  
FOUND #6 REBAR  
W/ 3.25" A.C.  
PLS 25645

N 1/4 COR. SEC. 22  
FOUND PK NAIL

NE COR. SEC. 22  
FOUND 1" PIPE  
W/ 3.25" A.C.  
PLS 37946

W 1/4 COR. SEC.22  
FOUND #6 REBAR  
W/ 3.25" A.C.  
PLS 25645

22

C 1/4 COR. SEC. 22  
FOUND 2" STEEL  
PIPE W/ 3" A.C.  
PLS 25937

E 1/4 COR. SEC.22  
FOUND #6 REBAR  
3.25" A.C.  
PLS 34579

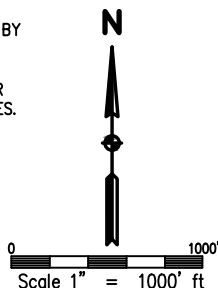
S 1/4 COR. SEC. 22  
FOUND #6 REBAR  
W/ 3.25 A.C.  
PLS 29420

SW COR. SEC. 22  
FOUND #6 REBAR  
W/ 3.25" A.C.  
PLS 25645

SE COR. SEC. 22  
FOUND #6 REBAR  
W/ 3.25" A.C.  
PLS 13155

I HEREBY CERTIFY THAT THIS WELL LOCATION CERTIFICATE WAS PREPARED BY ME, OR UNDER MY DIRECT SUPERVISION, THAT THE FIELD WORK WAS COMPLETED ON 9/28/2017, THAT IT IS NOT A LAND SURVEY PLAT OR AN IMPROVEMENT SURVEY PLAT, AND THAT IT IS NOT TO BE RELED UPON FOR ESTABLISHMENT OF FENCE, BUILDING OR OTHER FUTURE IMPROVEMENT LINES.

AARON A. DEMO  
Professional Land Surveyor Registration No. 38285  
State of Colorado  
FOR AND ON BEHALF OF BASELINE ENGINEERING CORP.



SURFACE LOCATION  
SEC.10, T1S, R68W  
GROUND ELEVATION = 5231.7'  
PDOP = 1.4  
LATITUDE = 39.980565"  
LONGITUDE = -104.992944"  
2215' FNL, 1191' FWL  
ENTRY POINT LOCATION  
SEC.10, T1S, R68W  
LATITUDE = 39.986184"  
LONGITUDE = -104.984769"  
150' FNL, 1800' FEL  
BOTTOM HOLE LOCATION  
SEC. 22, T1S, R68W  
LATITUDE = 39.944321"  
LONGITUDE = -104.984464"  
460' FSL, 1754' FEL

## NOTES:

1. ● INDICATES SECTION CORNER
2. ○ INDICATES CALCULATED CORNER
3. (C) INDICATES CALCULATED DIMENSION
4. ELEVATION BASED ON NAVD88 (GEOID12B)
5. BEARINGS DERIVED FROM COLORADO COORDINATE SYSTEM OF 1983 NAD83 ZONE.
6. OPERATOR: TRAVIS WINNICKI
7. IMPROVEMENTS: SEE LOCATION DRAWING FOR ALL VISIBLE IMPROVEMENTS WITHIN 500' OF DISTURBED AREA.
8. WELL FOOTAGES ARE MEASURED AT RIGHT ANGLES TO THE SECTION LINES.

## NEAREST CULTURAL ITEMS:

BUILDING: 1048' S  
BUILDING UNIT: 1328' W  
HIGH OCCUPANCY BUILDING UNIT: 5280' +  
DESIGNATED OUTSIDE ACTIVITY AREA: 5280' +  
PUBLIC ROAD: I-25 ON RAMP 364' NE  
ABOVE GROUND UTILITY: 1182' W  
RAILROAD: 5280' +  
PROPERTY LINE: 279' NE  
SURFACE USE: FARMLAND.  
NEAREST EXISTING WELL: BEYER MA 10-5 577' NW



DRAWN BY	RPM	CHECKED BY	AAD
INITIAL SUBMITTAL	1/19/2018		
REVISED	N/A		
DRAWING SIZE	8.5" X 11"		
JOB NO.	EXT01S08W10-03		
SHEET	3 of 3		

