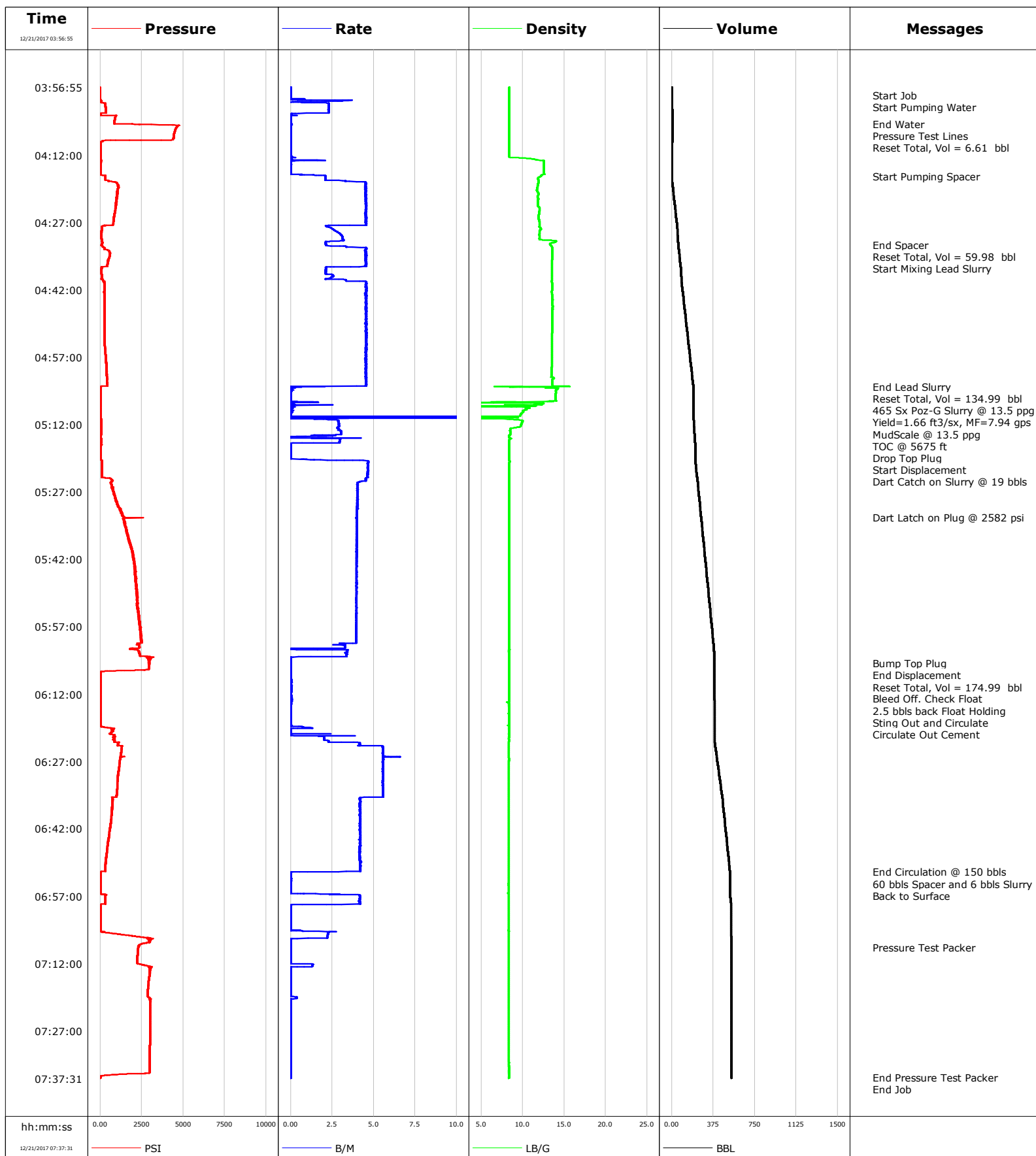


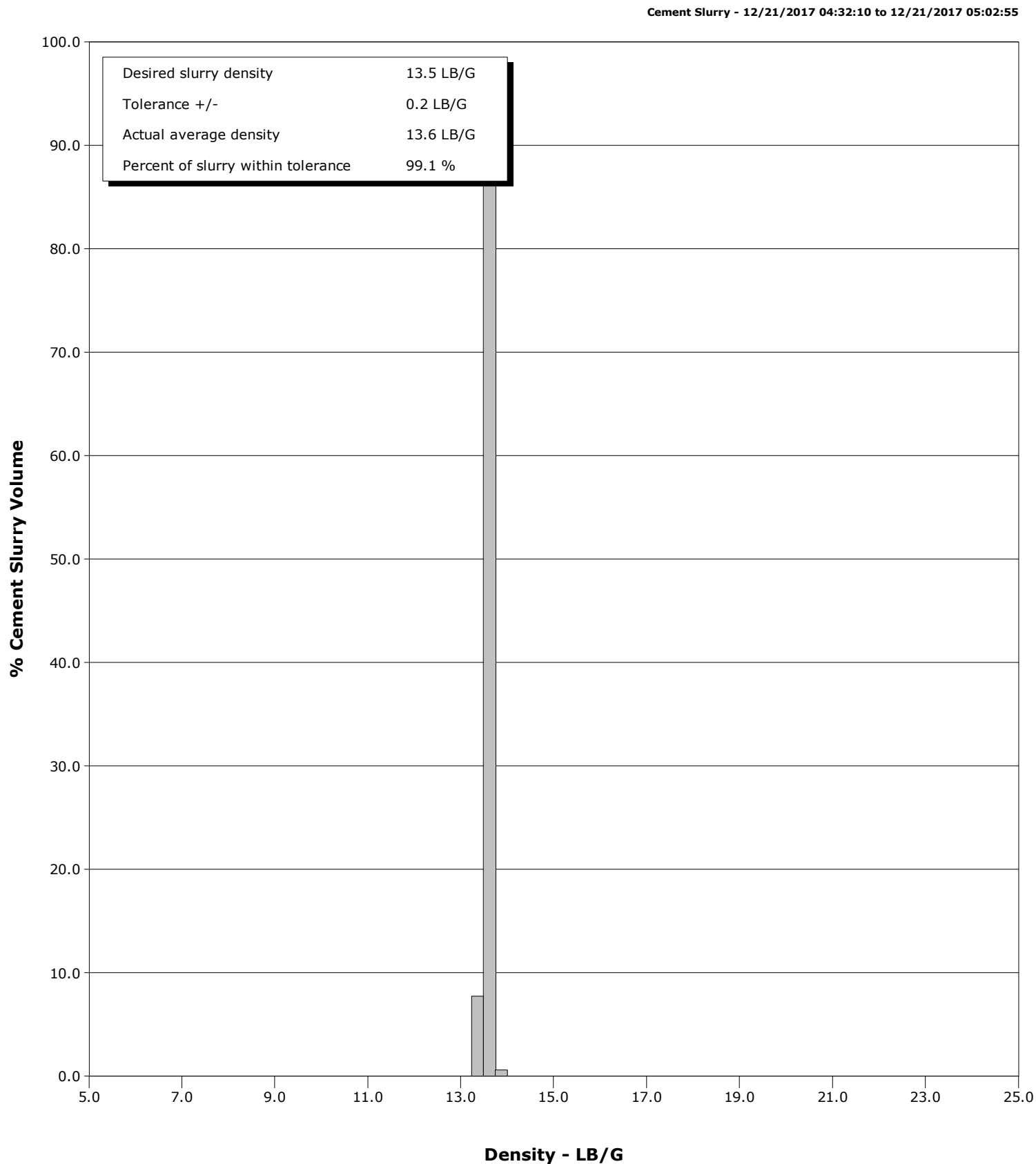
Well Yellowhammer 13N-17HZ
Field Wattenberg
Engineer Wence Luste
Country United States

Client ANADARKO PETROLEUM COMPANY (ED)
SIR No. CSS9-00916
Job Type 4 1/2" Liner
Job Date 12-21-2017



Well Yellowhammer 13N-17HZ
Field Wattenberg
Engineer Wence Luste
Country United States

Client ANADARKO PETROLEUM COMPANY (ED)
SIR No. CSS9-00916
Job Type 4 1/2" Liner
Job Date 12-21-2017



Cementing Service Report

				Customer ANADARKO PETROLEUM COMPANY (ED)			Job Number CSS9-00916										
Well Yellowhammer 13N-17HZ 0631736255			Location (legal) 05123454950000			Schlumberger Location Denver			Job Start Dec/21/2017								
Field Wattenberg		Formation Name/Type			Deviation deg		Bit Size 6.1 in		Well MD 13371.0 ft		Well TVD 7520.0 ft						
County Weld		State/Province Colorado			BHP psi		BHST 225 degF		BHCT 219 degF		Pore Press. Gradient lb/gal						
Well Master 0631736255		API/UWI 05123454950000															
Rig Name Xtreme 24		Drilled For Oil & Gas		Service Via Land		Casing/ Liner											
						Depth, ft		Size, in		Weight, lb/ft		Grade		Thread			
Offshore Zone		Well Class New		Well Type Development		5893.0		7.0		26.0		P110		8RD			
						13365.0		4.5		11.6		P110		BTC			
Drilling Fluid Type OBM		Max. Density 10.00 lb/gal		Plastic Viscosity 12.000 cP		Tubing/Drill Pipe											
						T/D		Depth, ft		Size, in		Weight, lb/ft		Grade		Thread	
Service Line Cementing		Job Type 4 1/2" Liner															
Max. Allowed Tub. Press psi		Max. Allowed Ann. Press psi		WH Connection 4" DP X 2" 1502 SGE		Perforations/Open Hole											
						Top, ft		Bottom, ft		shot/ft		No. of Shots		Total Interval ft			
Service Instructions Perform job as per proposal.						ft		ft								Diameter in	
						ft		ft									
						ft		ft									
		Treat Down Casing				Displacement 175.7 bbl				Packer Type				Packer Depth ft			
		Tubing Vol. 57.0 bbl				Casing Vol. 118.7 bbl				Annular Vol. 257.6 bbl				Openhole Vol. 438.0 bbl			
Casing/Tubing Secured <input checked="" type="checkbox"/>		1 Hole Vol. Circulated prior to Cement <input type="checkbox"/>				Casing Tools				Squeeze Job							
Lift Pressure 10806 psi						Shoe Type Float				Squeeze Type							
Pipe Rotated <input type="checkbox"/>		Pipe Reciprocated <input type="checkbox"/>				Shoe Depth 13365.0 ft				Tool Type							
No. Centralizers		Top Plugs 1		Bottom Plugs		Stage Tool Type				Tool Depth ft							
Cement Head Type						Stage Tool Depth ft				Tail Pipe Size in							
Job Scheduled For Dec/21/2017 04:00		Arrived on Location Dec/20/2017 20:00		Leave Location Dec/21/2017		Collar Type Float				Tail Pipe Depth ft							
						Collar Depth 13315.0 ft				Sqz. Total Vol. bbl							
Date	Time 24-hr clock	Treating Pressure PSI	Flow Rate B/M	Density LB/G	Volume BBL	Message											
12/21/2017	03:56:55	-1	0.0	8.36	0.0	Started Acquisition											
12/21/2017	03:57:40	-2	0.0	8.37	0.0												
12/21/2017	03:58:25	-3	0.0	8.36	0.0												
12/21/2017	03:58:43	-3	0.0	8.37	0.0	Start Job											
12/21/2017	03:59:10	-3	0.0	8.37	0.0												
12/21/2017	03:59:48	9	0.9	8.36	0.1	Start Pumping Water											
12/21/2017	03:59:55	60	3.2	8.36	0.3												
12/21/2017	04:00:40	297	2.3	8.36	1.7												
12/21/2017	04:01:25	328	2.3	8.36	3.5												
12/21/2017	04:02:10	337	2.3	8.36	5.2												
12/21/2017	04:02:55	24	0.0	8.36	6.6												
12/21/2017	04:03:40	904	0.0	8.36	6.6												
12/21/2017	04:04:25	864	0.0	8.36	6.6												
12/21/2017	04:05:05	842	0.0	8.36	6.6	End Water											
12/21/2017	04:05:09	1930	0.0	8.36	6.6	Pressure Test Lines											
12/21/2017	04:05:10	1919	0.0	8.37	6.6												
12/21/2017	04:05:24	4603	0.0	8.36	6.6	Reset Total, Vol = 6.61 bbl											
12/21/2017	04:05:55	4603	0.0	8.36	6.6												
12/21/2017	04:06:40	4510	0.0	8.36	6.6												
12/21/2017	04:07:25	4453	0.0	8.36	6.6												
12/21/2017	04:08:10	4437	0.0	8.36	6.6												

Well			Field		Job Start	Customer	Job Number
Yellowhammer 13N-17HZ 0631736255			Wattenberg		Dec/21/2017	ANADARKO PETROLEUM COMPANY (ED	CSS9-00916
Date	Time 24-hr clock	Treating Pressure PSI	Flow Rate B/M	Density LB/G	Volume BBL	Message	
12/21/2017	04:09:40	24	0.0	8.36	0.0		
12/21/2017	04:10:25	25	0.0	8.36	0.0		
12/21/2017	04:11:10	21	0.0	8.36	0.0		
12/21/2017	04:11:55	20	0.0	8.36	0.0		
12/21/2017	04:12:40	21	0.1	9.63	0.1		
12/21/2017	04:13:25	52	0.0	12.55	0.2		
12/21/2017	04:14:10	25	0.0	12.55	0.2		
12/21/2017	04:14:55	19	0.0	12.56	0.2		
12/21/2017	04:15:40	17	0.0	12.56	0.2		
12/21/2017	04:16:25	25	0.7	12.42	0.3		
12/21/2017	04:16:45	307	2.1	12.19	0.8	Start Pumping Spacer	
12/21/2017	04:17:10	315	2.1	11.88	1.7		
12/21/2017	04:17:55	547	3.3	11.91	3.5		
12/21/2017	04:18:40	1087	4.5	11.85	6.8		
12/21/2017	04:19:25	1105	4.6	11.75	10.2		
12/21/2017	04:20:10	1054	4.5	11.79	13.6		
12/21/2017	04:20:55	1014	4.5	11.88	17.0		
12/21/2017	04:21:40	1011	4.5	11.86	20.4		
12/21/2017	04:22:25	982	4.5	11.87	23.8		
12/21/2017	04:23:10	966	4.5	11.87	27.2		
12/21/2017	04:23:55	935	4.6	12.05	30.6		
12/21/2017	04:24:40	886	4.5	12.00	34.0		
12/21/2017	04:25:25	855	4.5	11.94	37.4		
12/21/2017	04:26:10	833	4.5	11.91	40.9		
12/21/2017	04:26:55	806	4.5	12.01	44.3		
12/21/2017	04:27:40	766	4.6	12.01	47.7		
12/21/2017	04:28:25	92	2.5	12.18	49.5		
12/21/2017	04:29:10	89	2.8	12.01	51.5		
12/21/2017	04:29:55	90	3.1	12.01	53.7		
12/21/2017	04:30:40	90	3.1	12.01	56.0		
12/21/2017	04:31:25	122	2.1	13.95	58.2		
12/21/2017	04:31:59	90	2.1	13.32	59.4	End Spacer	
12/21/2017	04:32:00	88	2.1	13.33	59.5	Reset Total, Vol = 59.98 bbl	
12/21/2017	04:32:05	87	2.1	13.37	59.6	Start Mixing Lead Slurry	
12/21/2017	04:32:10	85	2.2	13.41	59.8		
12/21/2017	04:32:55	249	4.6	13.60	62.6		
12/21/2017	04:33:40	566	4.5	13.58	66.0		
12/21/2017	04:34:25	589	4.5	13.58	69.4		
12/21/2017	04:35:10	511	4.5	13.58	72.8		
12/21/2017	04:35:55	470	4.5	13.53	76.2		
12/21/2017	04:36:40	415	4.5	13.52	79.6		
12/21/2017	04:37:25	90	2.1	13.52	81.8		
12/21/2017	04:38:10	89	2.1	13.52	83.4		
12/21/2017	04:38:55	107	2.6	13.52	85.1		
12/21/2017	04:39:40	87	2.1	13.53	86.9		
12/21/2017	04:40:25	239	4.5	13.53	89.7		
12/21/2017	04:41:10	247	4.6	13.58	93.1		
12/21/2017	04:41:55	247	4.6	13.58	96.6		
12/21/2017	04:42:40	245	4.6	13.51	100.0		
12/21/2017	04:43:25	255	4.6	13.59	103.4		
12/21/2017	04:44:10	264	4.5	13.62	106.8		
12/21/2017	04:44:55	250	4.6	13.62	110.2		
12/21/2017	04:45:40	251	4.6	13.62	113.6		
12/21/2017	04:46:25	259	4.6	13.62	117.0		

Well			Field		Job Start	Customer	Job Number
Yellowhammer 13N-17HZ 0631736255			Wattenberg		Dec/21/2017	ANADARKO PETROLEUM COMPANY (ED	CSS9-00916
Date	Time 24-hr clock	Treating Pressure PSI	Flow Rate B/M	Density LB/G	Volume BBL	Message	
12/21/2017	04:47:55	263	4.6	13.61	123.9		
12/21/2017	04:48:40	257	4.5	13.60	127.3		
12/21/2017	04:49:25	251	4.6	13.58	130.7		
12/21/2017	04:50:10	251	4.5	13.57	134.1		
12/21/2017	04:50:55	253	4.6	13.57	137.5		
12/21/2017	04:51:40	250	4.6	13.56	141.0		
12/21/2017	04:52:25	254	4.5	13.55	144.4		
12/21/2017	04:53:10	250	4.6	13.54	147.8		
12/21/2017	04:53:55	253	4.6	13.54	151.2		
12/21/2017	04:54:40	288	4.6	13.54	154.7		
12/21/2017	04:55:25	303	4.6	13.53	158.1		
12/21/2017	04:56:55	336	4.6	13.52	164.9		
12/21/2017	04:57:40	347	4.5	13.52	168.3		
12/21/2017	04:58:25	361	4.6	13.52	171.7		
12/21/2017	04:59:10	374	4.5	13.51	175.1		
12/21/2017	04:59:55	375	4.6	13.48	178.5		
12/21/2017	05:00:40	382	4.5	13.49	181.9		
12/21/2017	05:01:25	394	4.5	13.50	185.3		
12/21/2017	05:02:10	414	4.6	13.59	188.7		
12/21/2017	05:02:55	422	4.6	13.58	192.2		
12/21/2017	05:03:34	21	0.6	6.56	194.9	End Lead Slurry	
12/21/2017	05:03:37	20	0.0	9.99	194.9	Reset Total, Vol = 134.99 bbl	
12/21/2017	05:03:40	19	0.0	8.44	194.9		
12/21/2017	05:03:41	19	0.7	9.72	194.9	465 Sx Poz-G Slurry @ 13.5 ppg	
12/21/2017	05:03:42	19	0.3	10.86	194.9	Yield=1.66 ft3/sx, MF=7.94 gps	
12/21/2017	05:03:43	19	0.3	12.52	194.9	MudScale @ 13.5 ppg	
12/21/2017	05:03:44	19	0.1	13.14	194.9	TOC @ 5675 ft	
12/21/2017	05:04:25	12	0.1	14.01	195.0		
12/21/2017	05:05:10	10	0.0	13.98	195.0		
12/21/2017	05:05:55	10	0.0	13.94	195.0		
12/21/2017	05:06:40	10	0.0	13.94	195.0		
12/21/2017	05:07:25	10	0.0	12.51	195.1		
12/21/2017	05:08:10	10	0.0	10.61	195.2		
12/21/2017	05:08:55	10	0.1	10.08	195.3		
12/21/2017	05:09:40	10	0.0	9.81	195.3		
12/21/2017	05:10:25	9	1.5	8.95	196.2		
12/21/2017	05:11:10	80	2.9	9.99	198.1		
12/21/2017	05:11:55	78	2.9	9.86	200.3		
12/21/2017	05:12:40	72	2.8	9.29	202.4		
12/21/2017	05:13:25	74	3.0	8.47	204.6		
12/21/2017	05:14:10	76	3.0	8.48	206.9		
12/21/2017	05:14:55	11	0.0	8.36	208.0		
12/21/2017	05:15:40	75	3.0	8.37	210.0		
12/21/2017	05:15:57	74	2.9	8.37	210.8	Drop Top Plug	
12/21/2017	05:16:25	11	0.0	8.37	211.3		
12/21/2017	05:17:10	11	0.0	8.37	211.3		
12/21/2017	05:17:55	8	0.0	8.37	211.3		
12/21/2017	05:18:40	7	0.0	8.36	211.3		
12/21/2017	05:19:25	9	0.0	8.37	211.4		
12/21/2017	05:20:02	101	4.6	8.38	212.0	Start Displacement	
12/21/2017	05:20:10	102	4.7	8.42	212.6		
12/21/2017	05:20:55	100	4.7	8.40	216.1		
12/21/2017	05:21:40	103	4.7	8.40	219.6		
12/21/2017	05:22:25	102	4.7	8.37	223.1		

Well			Field		Job Start	Customer	Job Number
Yellowhammer 13N-17HZ 0631736255			Wattenberg		Dec/21/2017	ANADARKO PETROLEUM COMPANY (ED	CSS9-00916
Date	Time 24-hr clock	Treating Pressure PSI	Flow Rate B/M	Density LB/G	Volume BBL	Message	
12/21/2017	05:23:55	458	4.5	8.37	230.0		
12/21/2017	05:24:01	625	4.5	8.36	230.5	Dart Catch on Slurry @ 19 bbls	
12/21/2017	05:24:40	724	4.3	8.38	233.5		
12/21/2017	05:25:25	681	4.0	8.38	236.5		
12/21/2017	05:26:10	800	4.0	8.38	239.5		
12/21/2017	05:26:55	847	4.0	8.37	242.6		
12/21/2017	05:27:40	861	4.0	8.36	245.6		
12/21/2017	05:28:25	956	4.0	8.36	248.6		
12/21/2017	05:29:10	1005	4.0	8.36	251.6		
12/21/2017	05:29:55	1058	4.0	8.36	254.7		
12/21/2017	05:30:40	1169	4.0	8.36	257.7		
12/21/2017	05:31:25	1276	4.0	8.36	260.7		
12/21/2017	05:32:10	1314	4.0	8.36	263.7		
12/21/2017	05:32:45	2361	4.0	8.36	266.0	Dart Latch on Plug @ 2582 psi	
12/21/2017	05:32:55	1419	4.0	8.36	266.7		
12/21/2017	05:33:40	1442	4.0	8.36	269.7		
12/21/2017	05:34:25	1471	4.0	8.36	272.7		
12/21/2017	05:35:10	1592	4.0	8.37	275.7		
12/21/2017	05:35:55	1626	4.0	8.37	278.7		
12/21/2017	05:36:40	1633	4.0	8.37	281.6		
12/21/2017	05:37:25	1750	4.0	8.36	284.6		
12/21/2017	05:38:10	1782	4.0	8.36	287.6		
12/21/2017	05:38:55	1823	4.0	8.36	290.6		
12/21/2017	05:39:40	1923	4.0	8.36	293.6		
12/21/2017	05:40:25	1958	4.0	8.36	296.6		
12/21/2017	05:41:10	1998	4.0	8.36	299.6		
12/21/2017	05:41:55	2040	4.0	8.36	302.6		
12/21/2017	05:42:40	2060	4.0	8.36	305.5		
12/21/2017	05:43:25	2093	4.0	8.36	308.5		
12/21/2017	05:44:10	2147	4.0	8.36	311.5		
12/21/2017	05:44:55	2134	4.0	8.36	314.5		
12/21/2017	05:45:40	2172	4.0	8.36	317.5		
12/21/2017	05:46:25	2206	4.0	8.36	320.4		
12/21/2017	05:47:10	2172	4.0	8.36	323.4		
12/21/2017	05:47:55	2204	4.0	8.36	326.4		
12/21/2017	05:48:40	2249	4.0	8.36	329.4		
12/21/2017	05:49:25	2230	4.0	8.36	332.4		
12/21/2017	05:50:10	2257	4.0	8.36	335.3		
12/21/2017	05:50:55	2224	4.0	8.36	338.3		
12/21/2017	05:52:25	2247	4.0	8.36	344.3		
12/21/2017	05:53:10	2276	4.0	8.36	347.2		
12/21/2017	05:53:55	2310	4.0	8.36	350.2		
12/21/2017	05:54:40	2349	4.0	8.36	353.2		
12/21/2017	05:55:25	2362	4.0	8.36	356.2		
12/21/2017	05:56:10	2384	4.0	8.36	359.1		
12/21/2017	05:56:55	2406	4.0	8.36	362.1		
12/21/2017	05:57:40	2427	3.9	8.36	365.1		
12/21/2017	05:58:25	2426	4.0	8.36	368.1		
12/21/2017	05:59:10	2457	4.0	8.36	371.0		
12/21/2017	05:59:55	2487	4.0	8.36	374.0		
12/21/2017	06:00:40	2307	3.8	8.36	377.0		
12/21/2017	06:01:25	2358	3.3	8.36	379.4		
12/21/2017	06:02:10	2258	3.5	8.40	380.8		
12/21/2017	06:02:55	2376	3.3	8.36	383.4		

Well			Field		Job Start	Customer	Job Number
Yellowhammer 13N-17HZ 0631736255			Wattenberg		Dec/21/2017	ANADARKO PETROLEUM COMPANY (ED	CSS9-00916
Date	Time 24-hr clock	Treating Pressure PSI	Flow Rate B/M	Density LB/G	Volume BBL	Message	
12/21/2017	06:04:25	3018	0.0	8.36	386.0		
12/21/2017	06:05:04	2930	0.0	8.36	386.0	Bump Top Plug	
12/21/2017	06:05:05	2955	0.0	8.36	386.0	End Displacement	
12/21/2017	06:05:10	2938	0.0	8.36	386.0		
12/21/2017	06:05:29	2969	0.0	8.36	386.0	Reset Total, Vol = 174.99 bbl	
12/21/2017	06:05:55	2942	0.0	8.36	386.0		
12/21/2017	06:06:40	2517	0.0	8.36	386.0		
12/21/2017	06:07:04	8	0.0	8.36	386.0	Bleed Off. Check Float	
12/21/2017	06:07:25	9	0.0	8.36	386.0		
12/21/2017	06:07:26	9	0.0	8.36	386.0	2.5 bbls back Float Holding	
12/21/2017	06:07:28	11	0.0	8.36	386.0	Sting Out and Circulate	
12/21/2017	06:08:10	12	0.0	8.36	386.0		
12/21/2017	06:08:55	12	0.0	8.36	386.1		
12/21/2017	06:09:40	12	0.0	8.37	386.1		
12/21/2017	06:10:25	11	0.0	8.37	386.1		
12/21/2017	06:11:10	12	0.1	8.37	386.2		
12/21/2017	06:11:55	11	0.0	8.37	386.2		
12/21/2017	06:12:40	11	0.0	8.37	386.2		
12/21/2017	06:13:25	11	0.1	8.37	386.2		
12/21/2017	06:14:10	8	0.0	8.37	386.3		
12/21/2017	06:14:55	10	0.0	8.36	386.3		
12/21/2017	06:15:40	10	0.0	8.36	386.3		
12/21/2017	06:16:25	9	0.0	8.36	386.3		
12/21/2017	06:17:10	8	0.0	8.36	386.3		
12/21/2017	06:17:55	9	0.0	8.36	386.3		
12/21/2017	06:18:40	9	0.0	8.36	386.3		
12/21/2017	06:19:11	76	0.0	8.37	386.3	Circulate Out Cement	
12/21/2017	06:20:10	780	0.0	8.36	386.8		
12/21/2017	06:20:55	604	0.0	8.35	386.8		
12/21/2017	06:21:40	785	2.0	8.36	387.7		
12/21/2017	06:22:25	865	2.3	8.36	389.3		
12/21/2017	06:23:10	1060	4.2	8.34	391.8		
12/21/2017	06:23:55	1305	5.6	8.34	395.5		
12/21/2017	06:24:40	1283	5.6	8.34	399.7		
12/21/2017	06:25:25	1243	5.6	8.35	403.8		
12/21/2017	06:26:10	1221	5.6	8.35	408.1		
12/21/2017	06:26:55	1194	5.6	8.35	412.3		
12/21/2017	06:27:40	1166	5.6	8.35	416.5		
12/21/2017	06:28:25	1135	5.6	8.34	420.7		
12/21/2017	06:29:10	1115	5.6	8.35	424.9		
12/21/2017	06:29:55	1088	5.6	8.34	429.1		
12/21/2017	06:30:40	1063	5.6	8.34	433.2		
12/21/2017	06:31:25	1055	5.6	8.33	437.4		
12/21/2017	06:32:10	1040	5.6	8.32	441.6		
12/21/2017	06:32:55	1022	5.6	8.33	445.8		
12/21/2017	06:33:40	1010	5.6	8.34	449.9		
12/21/2017	06:34:25	996	5.6	8.33	454.1		
12/21/2017	06:35:10	765	4.2	8.33	458.0		
12/21/2017	06:35:55	738	4.2	8.34	461.2		
12/21/2017	06:36:40	726	4.2	8.33	464.3		
12/21/2017	06:37:25	721	4.2	8.33	467.5		
12/21/2017	06:38:10	704	4.2	8.33	470.6		
12/21/2017	06:38:55	684	4.2	8.33	473.7		
12/21/2017	06:39:40	676	4.2	8.33	476.9		

Well Yellowhammer 13N-17HZ 0631736255			Field Wattenberg		Job Start Dec/21/2017	Customer ANADARKO PETROLEUM COMPANY (ED	Job Number CSS9-00916
Date	Time 24-hr clock	Treating Pressure PSI	Flow Rate B/M	Density LB/G	Volume BBL	Message	
12/21/2017	06:41:10	625	4.2	8.33	483.2		
12/21/2017	06:41:55	596	4.2	8.33	486.3		
12/21/2017	06:42:40	568	4.2	8.33	489.5		
12/21/2017	06:43:25	539	4.2	8.32	492.6		
12/21/2017	06:44:10	510	4.2	8.32	495.8		
12/21/2017	06:44:55	479	4.2	8.32	498.9		
12/21/2017	06:45:40	455	4.2	8.33	502.1		
12/21/2017	06:46:25	429	4.1	8.34	505.2		
12/21/2017	06:47:55	376	4.2	8.34	511.4		
12/21/2017	06:48:40	355	4.2	8.34	514.6		
12/21/2017	06:49:25	332	4.2	8.34	517.7		
12/21/2017	06:50:10	318	4.2	8.34	520.9		
12/21/2017	06:50:55	313	4.2	8.34	524.0		
12/21/2017	06:51:33	9	0.5	8.34	526.5	End Circulation @ 150 bbls	
12/21/2017	06:51:40	21	0.0	8.34	526.6		
12/21/2017	06:51:56	21	0.0	8.34	526.6	60 bbls Spacer and 6 bbls Slurry	
12/21/2017	06:52:00	20	0.0	8.34	526.6	Back to Surface	
12/21/2017	06:52:25	19	0.0	8.34	526.6		
12/21/2017	06:53:10	21	0.0	8.34	526.6		
12/21/2017	06:53:55	19	0.0	8.34	526.6		
12/21/2017	06:54:40	19	0.0	8.34	526.6		
12/21/2017	06:55:25	19	0.0	8.34	526.6		
12/21/2017	06:56:10	19	0.0	8.34	526.6		
12/21/2017	06:56:55	315	4.2	8.34	528.3		
12/21/2017	06:57:40	314	4.2	8.34	531.4		
12/21/2017	06:58:25	311	4.2	8.34	534.5		
12/21/2017	06:59:10	22	0.0	8.34	536.2		
12/21/2017	06:59:55	19	0.0	8.34	536.2		
12/21/2017	07:00:40	17	0.0	8.34	536.2		
12/21/2017	07:01:25	17	0.0	8.34	536.2		
12/21/2017	07:02:10	16	0.0	8.34	536.2		
12/21/2017	07:02:55	17	0.0	8.34	536.2		
12/21/2017	07:03:40	16	0.0	8.35	536.2		
12/21/2017	07:04:25	15	0.0	8.35	536.2		
12/21/2017	07:05:10	618	2.3	8.34	537.2		
12/21/2017	07:05:55	2144	2.2	8.34	538.9		
12/21/2017	07:06:40	3021	0.0	8.34	539.8		
12/21/2017	07:07:25	2684	0.0	8.35	539.8		
12/21/2017	07:08:10	2325	0.0	8.35	539.8		
12/21/2017	07:08:26	2316	0.0	8.35	539.8	Pressure Test Packer	
12/21/2017	07:08:55	2275	0.0	8.35	539.8		
12/21/2017	07:09:40	2253	0.0	8.35	539.8		
12/21/2017	07:10:25	2245	0.0	8.35	539.8		
12/21/2017	07:11:10	2235	0.0	8.35	539.8		
12/21/2017	07:11:55	2228	0.0	8.35	539.8		
12/21/2017	07:12:40	2922	0.8	8.34	540.7		
12/21/2017	07:13:25	2983	0.0	8.35	540.7		
12/21/2017	07:14:10	2978	0.0	8.35	540.7		
12/21/2017	07:15:40	2939	0.0	8.35	540.7		
12/21/2017	07:16:25	2914	0.0	8.35	540.7		
12/21/2017	07:17:10	2891	0.0	8.35	540.7		
12/21/2017	07:17:55	2868	0.0	8.35	540.7		
12/21/2017	07:18:40	2866	0.0	8.35	540.7		
12/21/2017	07:19:25	2876	0.4	8.35	540.7		

Well			Field		Job Start		Customer		Job Number	
Yellowhammer 13N-17HZ 0631736255			Wattenberg		Dec/21/2017		ANADARKO PETROLEUM COMPANY (ED		CSS9-00916	
Date	Time 24-hr clock	Treating Pressure PSI	Flow Rate B/M	Density LB/G	Volume BBL	Message				
12/21/2017	07:20:55	3015	0.0	8.35	540.8					
12/21/2017	07:21:40	3013	0.0	8.35	540.8					
12/21/2017	07:22:25	3013	0.0	8.35	540.8					
12/21/2017	07:23:10	3012	0.0	8.35	540.8					
12/21/2017	07:23:55	3012	0.0	8.35	540.8					
12/21/2017	07:24:40	3010	0.0	8.35	540.9					
12/21/2017	07:25:25	3008	0.0	8.35	540.9					
12/21/2017	07:26:10	3010	0.0	8.35	540.9					
12/21/2017	07:26:55	3004	0.0	8.35	540.9					
12/21/2017	07:27:40	3002	0.0	8.35	540.9					
12/21/2017	07:28:25	3000	0.0	8.35	540.9					
12/21/2017	07:29:10	2998	0.0	8.35	540.9					
12/21/2017	07:29:55	2999	0.0	8.35	540.9					
12/21/2017	07:30:40	2992	0.0	8.35	540.9					
12/21/2017	07:31:25	2992	0.0	8.35	540.9					
12/21/2017	07:32:10	2988	0.0	8.35	540.9					
12/21/2017	07:32:55	2987	0.0	8.35	540.9					
12/21/2017	07:33:40	2982	0.0	8.35	540.9					
12/21/2017	07:34:25	2980	0.0	8.35	540.9					
12/21/2017	07:35:10	2977	0.0	8.35	540.9					
12/21/2017	07:35:55	2981	0.0	8.35	540.9					
12/21/2017	07:36:40	975	0.0	8.35	540.9					
12/21/2017	07:37:18	3	0.0	8.35	540.9	End Pressure Test Packer				
12/21/2017	07:37:25	1	0.0	8.35	540.9					

Post Job Summary

Average Pump Rates, bbl/min					Volume of Fluid Injected, bbl						
Slurry 3.2	N2	Mud	Maximum Rate 15.8	Total Slurry 135.0	Mud 0.0	Spacer 60.1	N2				
Treating Pressure Summary, psi					Breakdown Fluid						
Maximum 4791	Final 3100	Average 1090	Bump Plug to 3000	Breakdown	Type	Volume bbl	Density lb/gal				
Avg. N2 Percent %	Designed Slurry Volume 135.0 bbl	Displacement 174.4 bbl	Mix Water Temp 65 degF	Cement Circulated to Surface?		<input checked="" type="checkbox"/>	Volume 6.0 bbl				
				Washed Thru Perfs		<input type="checkbox"/>	To ft				
Customer or Authorized Representative Jeremy Duty / Sean Giddings			Schlumberger Supervisor Wence Luste			Circulation Lost <input type="checkbox"/>	Job Completed <input checked="" type="checkbox"/>				
						-	-				