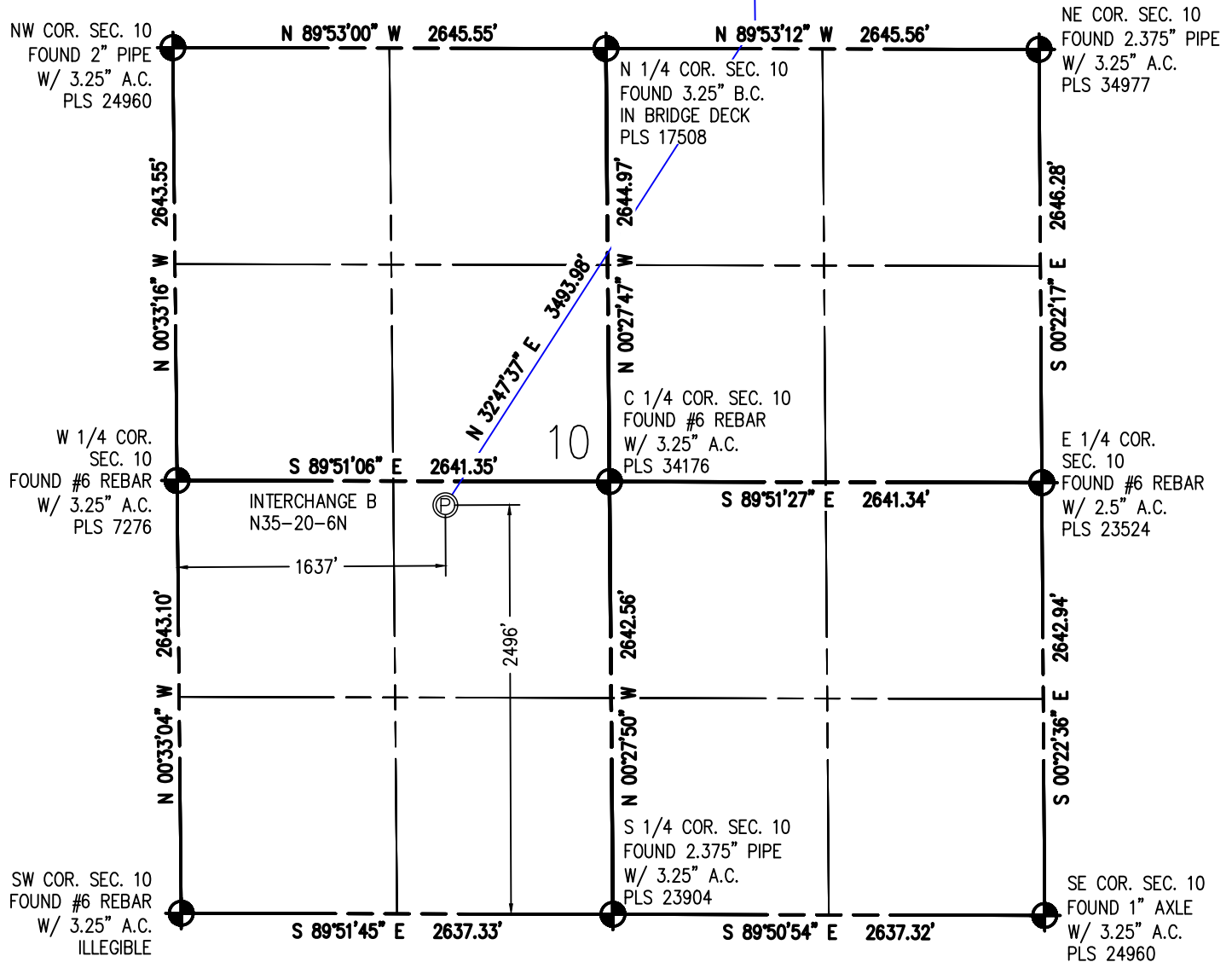


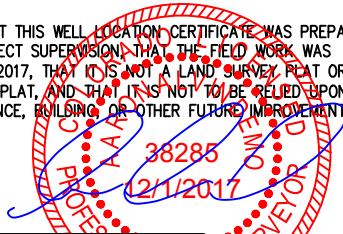
# WELL LOCATION PLAT INTERCHANGE B N35-20-6N

NE 1/4 SW 1/4 SEC. 10, T1S, R 68 W, 6TH P.M.

WELL BORE  
CONTINUES INTO  
SECTION 3  
(SHEET 2)



I HEREBY CERTIFY THAT THIS WELL LOCATION CERTIFICATE WAS PREPARED BY ME, OR UNDER MY DIRECT SUPERVISION, THAT THE FIELD WORK WAS COMPLETED ON 9/28/2017, THAT IT IS NOT A LAND SURVEY PLAT OR AN IMPROVEMENT SURVEY PLAT, AND THAT IT IS NOT TO BE RELIED UPON FOR ESTABLISHMENT OF FENCE, BUILDING OR OTHER FUTURE IMPROVEMENT LINES.



AARON A. DEMO  
Professional Land Surveyor Registration No. 38285  
State of Colorado  
FOR AND ON BEHALF OF BASELINE ENGINEERING CORP.



**SURFACE LOCATION**  
SEC. 10, T1S, R68W  
GROUND ELEVATION = 5213.4'  
PDOP = 1.4  
LATITUDE = 39.978976°  
LONGITUDE = -104.991343°  
2496' FSL, 1637' FWL  
**ENTRY POINT LOCATION**  
SEC. 3, T1S, R68W  
LATITUDE = 39.987006°  
LONGITUDE = -104.984533°  
150' FSL, 1735' FEL  
**BOTTOM HOLE LOCATION**  
SEC. 34, T1N, R68W  
LATITUDE = 40.013628°  
LONGITUDE = -104.984737°  
460' FNL, 1277' FEL

**NOTES:**

- INDICATES SECTION CORNER
- INDICATES CALCULATED CORNER
- (C) INDICATES CALCULATED DIMENSION
- ELEVATION BASED ON NAVD88 (GEOID12B)
- BEARINGS DERIVED FROM COLORADO COORDINATE SYSTEM OF 1983 NAD83 ZONE.
- OPERATOR: TRAVIS WINNICKI
- IMPROVEMENTS: SEE LOCATION DRAWING FOR ALL VISIBLE IMPROVEMENTS WITHIN 500' OF DISTURBED AREA.
- WELL FOOTAGES ARE MEASURED AT RIGHT ANGLES TO THE SECTION LINES.

**NEAREST CULTURAL ITEMS:**

BUILDING: 890' SW  
BUILDING UNIT: 1554' W  
HIGH OCCUPANCY BUILDING UNIT: 4748' S  
DESIGNATED OUTSIDE ACTIVITY AREA: 5280'+  
PUBLIC ROAD: 1-25 ON RAMP 571' E  
ABOVE GROUND UTILITY: 1622' W  
RAILROAD: 5280'+  
PROPERTY LINE: 395' E  
SURFACE USE: FARMLAND.  
NEAREST EXISTING WELL: 601' S



DRAWN BY RPM	CHECKED BY AAD
INITIAL SUBMITTAL 12/1/2017	REVISED N/A
DRAWING SIZE 8.5" X 11"	JOB NO. EXT01S88W10-03
SHEET 1 OF 3	



4007 S. LINCOLN AVENUE, SUITE 405 - LOVELAND, COLORADO 80537  
P: 970.353.7800 - F: 970.353.7801 - www.baselinincorp.com

PLOT\_STAMP

# WELL LOCATION PLAT INTERCHANGE B N35-20-6N

NE 1/4 SW 1/4 SEC. 10, T1S, R 68 W, 6TH P.M.

SW COR. SEC. 34  
FOUND #6 REBAR  
UPGRADED  
W/ 3.25" A.C.  
PLS 38285

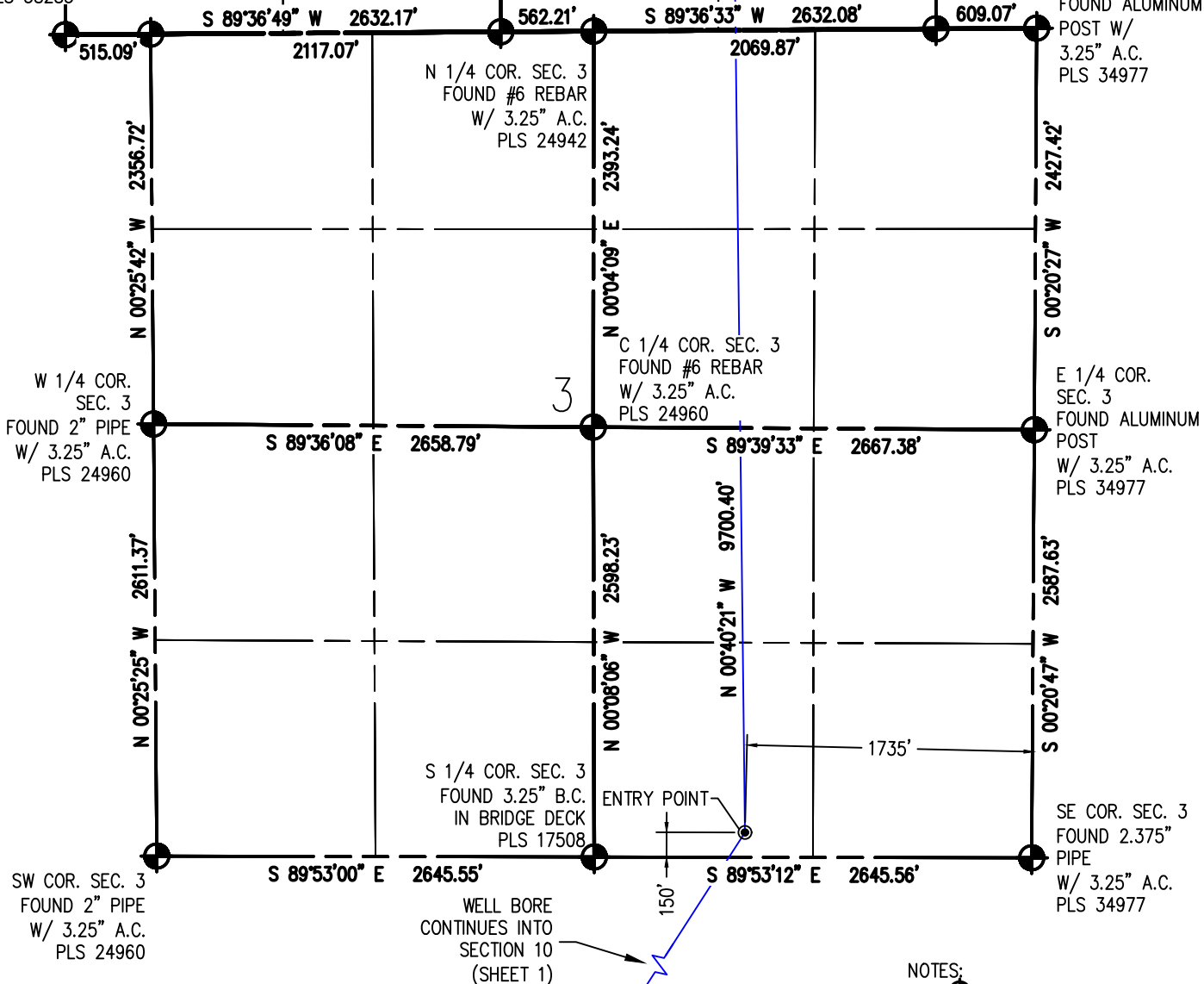
NW COR. SEC. 3  
FOUND #6 REBAR  
W/ 2" A.C.  
PLS 23500

S 1/4 COR. SEC. 34  
FOUND #6 REBAR  
W/ 2.5" A.C.  
PLS 14823

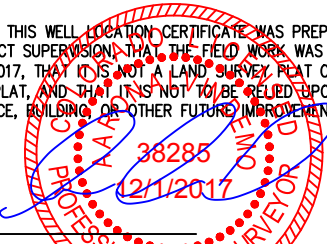
SE COR. SEC. 34  
FOUND 2" PIPE

WELL BORE  
CONTINUES INTO  
SECTION 34  
(SHEET 3)

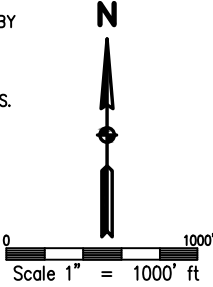
NE COR. SEC. 3  
FOUND ALUMINUM  
POST W/  
3.25" A.C.  
PLS 34977



I HEREBY CERTIFY THAT THIS WELL LOCATION CERTIFICATE WAS PREPARED BY ME, OR UNDER MY DIRECT SUPERVISION, THAT THE FIELD WORK WAS COMPLETED ON 9/28/2017, THAT IT IS NOT A LAND SURVEY PLAT OR AN IMPROVEMENT SURVEY PLAT, AND THAT IT IS NOT TO BE RELIED UPON FOR ESTABLISHMENT OF FENCE, BUILDING OR OTHER FUTURE IMPROVEMENT LINES.



AARON A. DEMO  
Professional Land Surveyor Registration No. 38285  
State of Colorado  
FOR AND ON BEHALF OF BASELINE ENGINEERING CORP.



SURFACE LOCATION  
SEC. 10, T1S, R68W  
GROUND ELEVATION = 5213.4'  
PDOP = 1.4  
LATITUDE = 39.978976"  
LONGITUDE = -104.991343"  
2496' FNL, 1637' FWL  
ENTRY POINT LOCATION  
SEC. 3, T1S, R68W  
LATITUDE = 39.987006"  
LONGITUDE = -104.984533"  
150' FSL, 1735' FEL  
BOTTOM HOLE LOCATION  
SEC. 34, T1N, R68W  
LATITUDE = 40.013628"  
LONGITUDE = -104.984737"  
460' FNL, 1277' FEL

- NOTES:
- INDICATES SECTION CORNER
  - INDICATES CALCULATED CORNER
  - (C) INDICATES CALCULATED DIMENSION
  - ELEVATION BASED ON NAVD88 (GEOID12B)
  - BEARINGS DERIVED FROM COLORADO COORDINATE SYSTEM OF 1983 NAD83 ZONE.
  - OPERATOR: TRAVIS WINNICKI
  - IMPROVEMENTS: SEE LOCATION DRAWING FOR ALL VISIBLE IMPROVEMENTS WITHIN 500' OF DISTURBED AREA.
  - WELL FOOTAGES ARE MEASURED AT RIGHT ANGLES TO THE SECTION LINES.

**NEAREST CULTURAL ITEMS:**

BUILDING: 890' SW  
BUILDING UNIT: 1554' W  
HIGH OCCUPANCY BUILDING UNIT: 4748' S  
DESIGNATED OUTSIDE ACTIVITY AREA: 5280'+  
PUBLIC ROAD: 1-25 ON RAMP 571' E  
ABOVE GROUND UTILITY: 1622' W  
RAILROAD: 5280'+  
PROPERTY LINE: 395' E  
SURFACE USE: FARMLAND.  
NEAREST EXISTING WELL: 601' S



DRAWN BY RPM	CHECKED BY AAD
INITIAL SUBMITTAL REVISED	12/1/2017 N/A
DRAWING SIZE	8.5" X 11"
JOB NO.	EXT01S8BW10-03
SHEET	2 of 3

**BASELINE**  
Engineering - Planning - Surveying

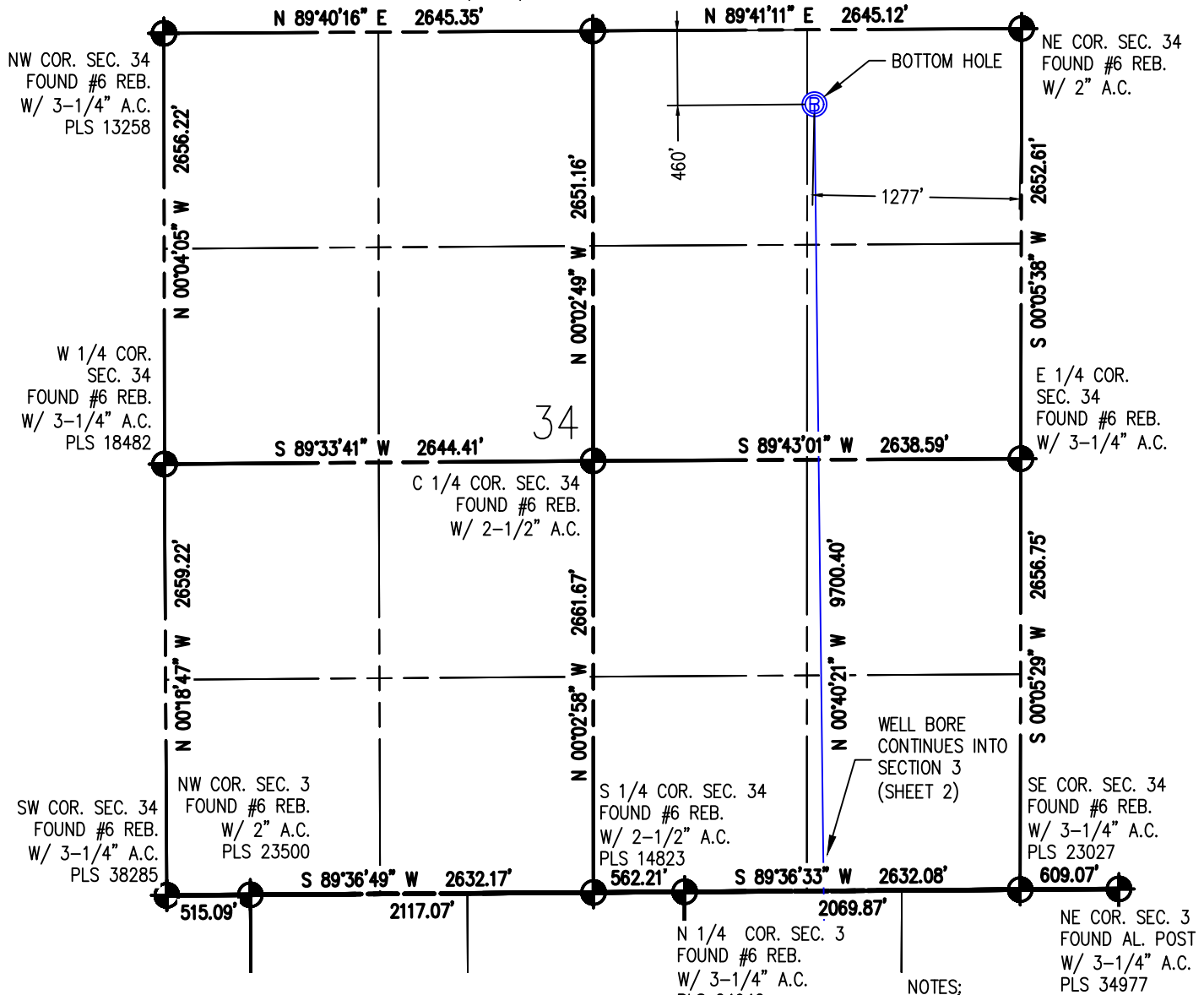
4007 S. LINCOLN AVENUE, SUITE 405 - LOVELAND, COLORADO 80537  
P: 970.353.7800 - F: 970.353.7801 - www.baselinecorp.com

PLOT\_STAMP

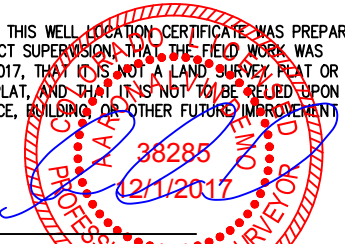
# WELL LOCATION PLAT INTERCHANGE B N35-20-6N

NE1/4 SW1/4 SEC. 10, T1S, R 68 W, 6TH P.M.

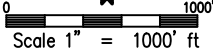
N 1/4 COR. SEC. 34  
FOUND #6 REB.  
W/ 3-1/4" A.C.



I HEREBY CERTIFY THAT THIS WELL LOCATION CERTIFICATE WAS PREPARED BY ME, OR UNDER MY DIRECT SUPERVISION, THAT THE FIELD WORK WAS COMPLETED ON 9/28/2017, THAT IT IS NOT A LAND SURVEY PLAT OR AN IMPROVEMENT SURVEY PLAT, AND THAT IT IS NOT TO BE RELIED UPON FOR ESTABLISHMENT OF FENCE, BUILDING OR OTHER FUTURE IMPROVEMENT LINES.



AARON A. DEMO  
Professional Land Surveyor Registration No. 38285  
State of Colorado  
FOR AND ON BEHALF OF BASELINE ENGINEERING CORP.



N 1/4 COR. SEC. 3  
FOUND #6 REB.  
W/ 3-1/4" A.C.  
PLS 24942

SURFACE LOCATION  
SEC. 10, T1S, R68W  
GROUND ELEVATION = 5213.4'  
PDOP = 1.4  
LATITUDE = 39.978976"  
LONGITUDE = -104.991343"  
2496' FSL, 1637' FWL  
ENTRY POINT LOCATION  
SEC. 3, T1S, R68W  
LATITUDE = 39.987006"  
LONGITUDE = -104.984533"  
150' FSL, 1735' FEL  
BOTTOM HOLE LOCATION  
SEC. 34, T1N, R68W  
LATITUDE = 40.013628"  
LONGITUDE = -104.984737"  
460' FNL, 1277' FEL

- NOTES:
- INDICATES SECTION CORNER
  - INDICATES CALCULATED CORNER
  - (C) INDICATES CALCULATED DIMENSION
  - ELEVATION BASED ON NAVD88 (GEOID12B)
  - BEARINGS DERIVED FROM COLORADO COORDINATE SYSTEM OF 1983 NAD83 ZONE.
  - OPERATOR: TRAVIS WINNICKI
  - IMPROVEMENTS: SEE LOCATION DRAWING FOR ALL VISIBLE IMPROVEMENTS WITHIN 500' OF DISTURBED AREA.
  - WELL FOOTAGES ARE MEASURED AT RIGHT ANGLES TO THE SECTION LINES.

**NEAREST CULTURAL ITEMS:**

BUILDING: 890' SW  
BUILDING UNIT: 1554' W  
HIGH OCCUPANCY BUILDING UNIT: 4748' S  
DESIGNATED OUTSIDE ACTIVITY AREA: 5280'+  
PUBLIC ROAD: 1-25 ON RAMP 571' E  
ABOVE GROUND UTILITY: 1622' W  
RAILROAD: 5280'+  
PROPERTY LINE: 395' E  
SURFACE USE: FARMLAND.  
NEAREST EXISTING WELL: 601' S



DRAWN BY RPM	CHECKED BY AAD
INITIAL SUBMITTAL 12/1/2017	REVISED N/A
DRAWING SIZE 8.5" X 11"	JOB NO. EXT01S8BW10-03
SHEET 3 of 3	

4007 S. LINCOLN AVENUE, SUITE 405 - LOVELAND, COLORADO 80537  
P: 970.353.7800 - F: 970.353.7801 - www.baselinecorp.com

PLOT\_STAMP