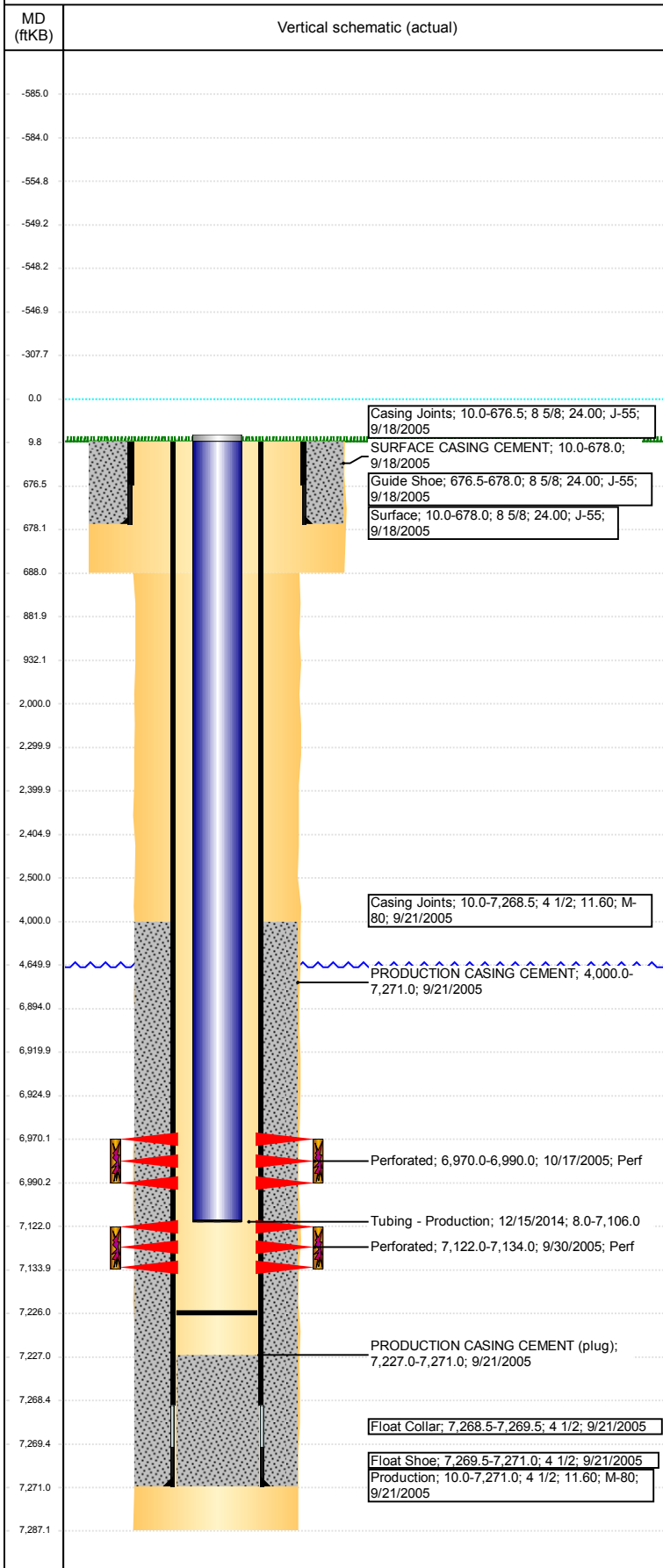


Well Name: MOSER H34-09

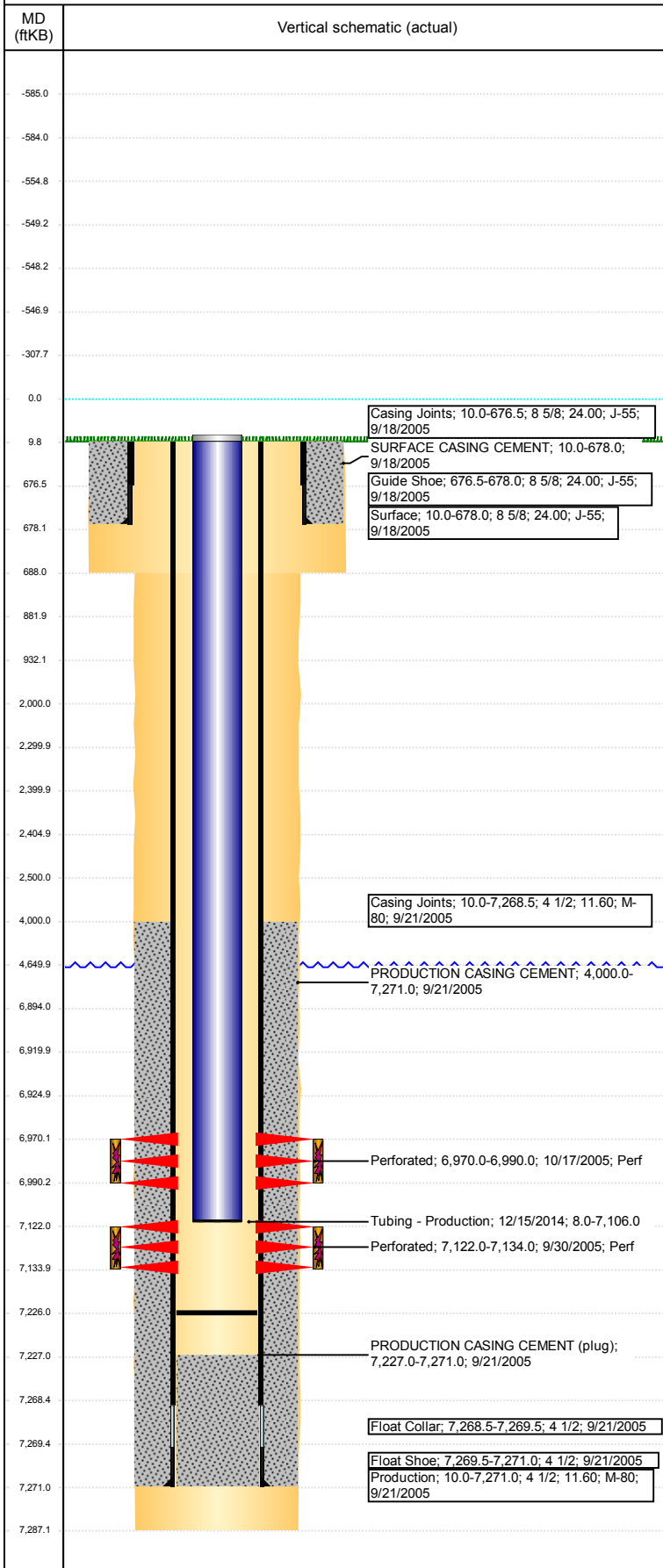
VERTICAL - ORIGINAL HOLE, 3/1/2018 11:15:16 AM



Well Header							
API 05-123-23198		Well Report Center 422124280		Well Configuration Type VERTICAL			
Original KB Elevation (ft) 4,843		KB - GL / MSL (ftKB) 10.00		Spud Date 9/17/2005		P & A Date	
Production Route C1-05			Well Production Status SI				SoRT Ignore No
Directions To Well				Actual Latitude (°) 40.17986722		Actual Longitude (°) -104.64231520	
Comment							
Congressional Location							
Quarter 3 NE	Quarter 4 SE	Section 34	Township 3	Twnshp N/S Dir N	Range 65	Range E/W Dir W	
Rig Operator							
Rig Operator							
Plug Back Total Depths							
Date	Depth (ftKB)	Method		Com			
11/9/2005	7,226.0	TAG		CLEAN OUT CIFT			
Wellbore Sections							
Section Des		Size (in)		Act Top, MD (ftKB)		Act Btm, MD (ftKB)	
SURFACE		12 1/4		10		688	
PRODUCTION		7 7/8		688		7,287	
Zone Statuses							
Zone Name		Status Date			Status		
CODELL		10/27/2016			SI		
NIOBRARA		2/17/2010			PR		
Casing Strings							
Surface, 678.0ftKB							
Casing Description Surface	Run Date 9/18/2005	OD (in) 8 5/8	Wt/Len (l... 24.00	Grade J-55	Top, MD (ft... 10.0	MD (ftKB) 678.0	
Production, 7,271.0ftKB							
Casing Description Production	Run Date 9/21/2005	OD (in) 4 1/2	Wt/Len (l... 11.60	Grade M-80	Top, MD (ft... 10.0	MD (ftKB) 7,271.0	
Cement							
Des		Start Date		Top (ftKB)		Btm (ftKB)	
SURFACE CASING CEMENT		9/18/2005		10.0		678.0	
PRODUCTION CASING CEMENT		9/21/2005		4,000.0		7,271.0	
Proposed Cement							
Des				Top (ftKB)		Btm (ftKB)	
Dump Bail				6,894.0		6,920.0	
Balance Plug				4,000.0		4,650.0	
Balance Plug				2,300.0		2,400.0	
Balance Plug				2,405.0		2,500.0	
Cement Squeeze				2,000.0		2,500.0	
Balance Plug				882.0		932.0	
Balance Plug				678.0		882.0	
Balance Plug				10.0		678.0	
Tubing Strings							
Tubing Description Tubing - Production	Run Date 12/15/2014	String... 2 3/8	ID (in) 2.00	Wt (lb/ft) 4.70	Grade J-55	Len (ft) 7,098.00	Set De...
Tubing Components							
Item Des	OD (in)	Wt (lb/ft)	Grade	Jts	Len (ft)	Btm (ftKB)	Btm (TVD) (ftKB)
Tubing Pup Joint	2 3/8	4.70	J-55	1	10.00	18.0	
EUE 8rd Tubing	2 3/8	4.70	J-55	216	7,086.48	7,104.5	
Seat Nipple	2 3/8	4.70	N-80	1	1.10	7,105.6	
Notched collar	3 1/16	4.70	J-55	1	0.42	7,106.0	
Other In Hole							
Run Date	Des			OD (in)	Top (ftKB)	Btm (ftKB)	
Proposed Other In Hole							
Des				OD (in)	Top (ftKB)	Btm (ftKB)	
Cement Retainer				4	2,400.0	2,405.0	
Cast Iron Bridge Plug				4	6,920.0	6,925.0	

Well Name: MOSER H34-09

VERTICAL - ORIGINAL HOLE, 3/1/2018 11:15:16 AM



Logs			
Date	Type	Top, MD (ftKB)	Btm, MD (ftKB)
9/21/2005	COMPENSATED DENSITY	4,300.0	7,267.0
9/21/2005	INDUCTION	678.0	7,287.0
9/26/2005	CEMENT BOND	3,450.0	7,226.0
12/31/2013	GYRO	10.0	7,050.0

Perforation Data				
Linked Zone	Sum of Entered Shot Total	Top (ftKB)	Btm (ftKB)	Date
NIOBRARA, ORIGINAL HOLE	120	6,970.00	6,990.00	10/17/2005
CODELL, ORIGINAL HOLE	48	7,122.00	7,134.00	9/30/2005
Total (Sum)	168			

Proposed Perforations				
Linked Zone	Sum of En...	Top Depth (ftKB)	Btm (ftKB)	Date
	0	2,500.00	2,500.00	2/7/2018
Total (Sum)	0			

Job Supply Amounts						
Supply Item Des	Type	Uni...	Job Category	Total ...	Total ...	Total ...