

Interim Reclamation and Stormwater Inspection

February 27, 2018

Operator: BAYSWATER EXPLORATION & PRODUCTION LLC- #10261

Location ID: 419217

Inspection Document #: 682403348

Weld County, CO

SWSE Section 27 T7N R66W

Chris Binschus
Reclamation Specialist, COGCC



COLORADO

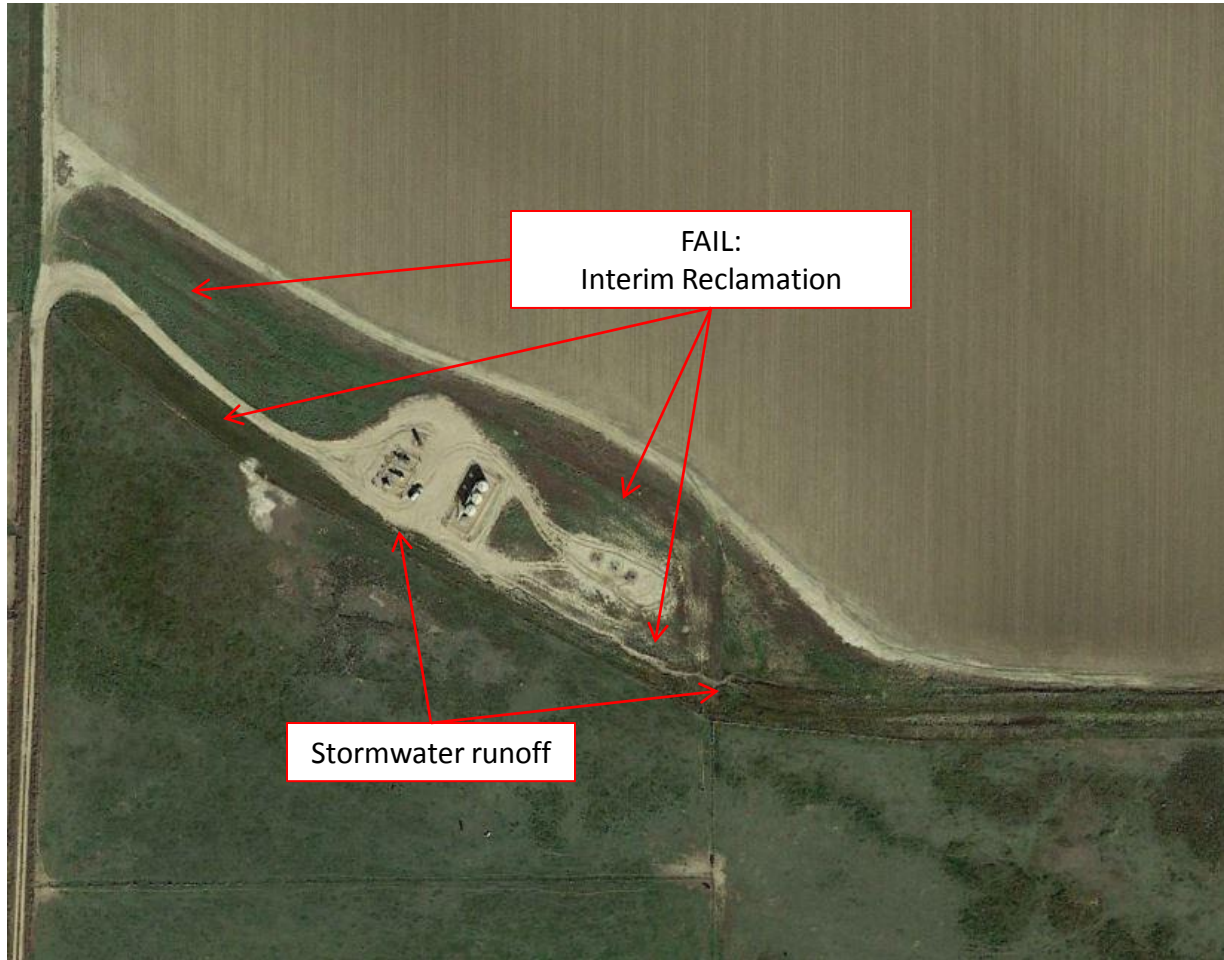
**Oil & Gas Conservation
Commission**

Department of Natural Resources

Inspection Photos

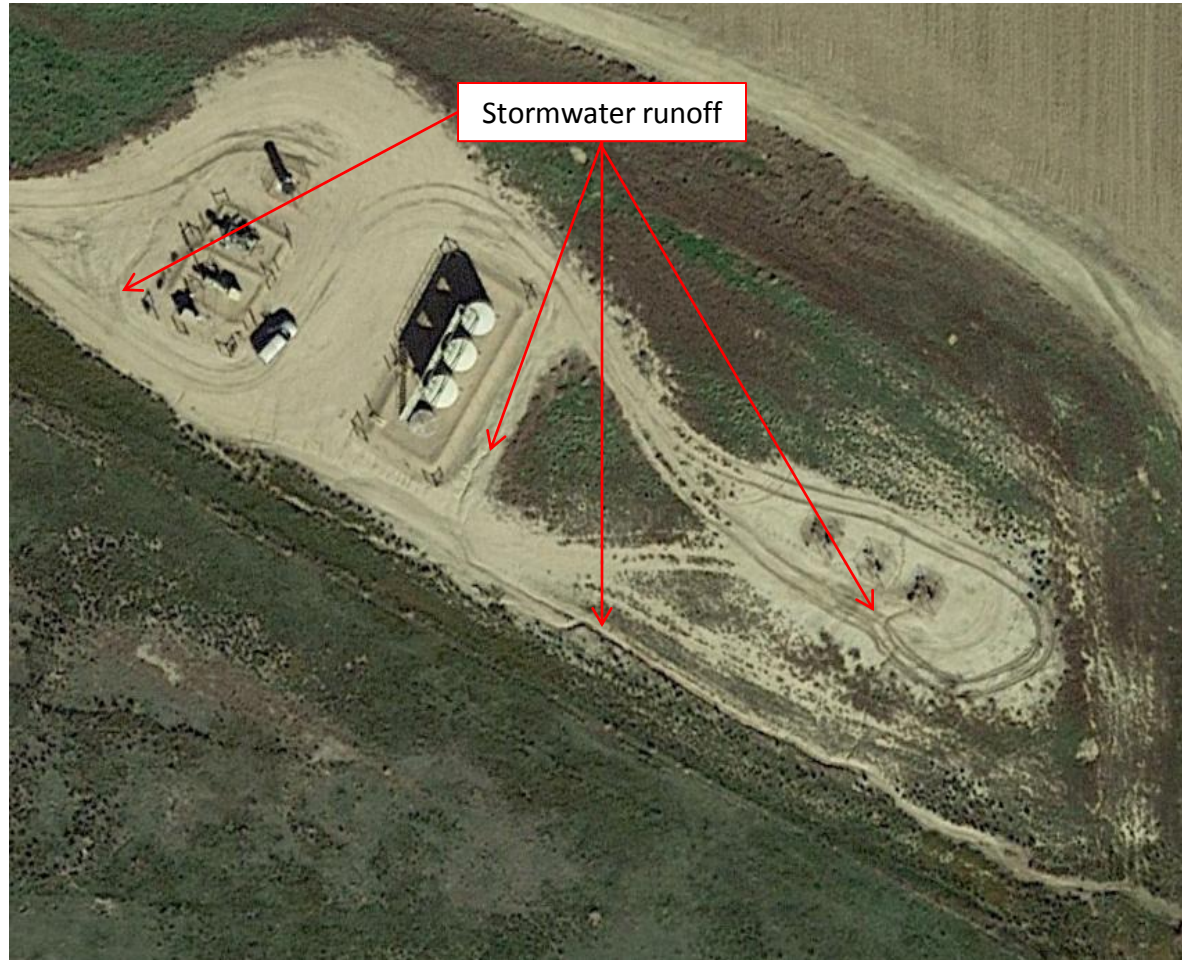
Location Name: G & D Hanks /10-27 Pad

Location ID: 419217



Google Earth aerial imagery taken October 14, 2017. Photo illustrates stormwater runoff from the facility and well location- see the following close-up aerial imagery. Interim reclamation areas do not meet Rule 1003 standards.

Inspection Photos
Location Name: G & D Hanks /10-27 Pad
Location ID: 419217



Close-up aerial imagery illustrates stormwater runoff from location.

Inspection Photos
Location Name: G & D Hanks /10-27 Pad
Location ID: 419217



Photo 1. Photo taken from the eastern interim reclamation area, facing West. This area does not meet Rule 1003 standards, as weedy, annual vegetation (Kochia and cheatgrass) and bare ground dominates the area which is not reflective of reference area vegetative levels.



Photo 2. Photo taken from the eastern interim reclamation area, facing West. See comments under Photo 1.

Inspection Photos
Location Name: G & D Hanks /10-27 Pad
Location ID: 419217



Photo 3. Photo taken from the eastern interim reclamation area, facing West. See comments under Photo 1.



Photo 4. Photo taken from the southeastern interim reclamation area, facing East. See comments under Photo 1.

Inspection Photos

Location Name: G & D Hanks /10-27 Pad

Location ID: 419217



Photo 5. Photo taken from the western interim reclamation area, facing West. See comments under Photo 1.

Inspection Photos
Location Name: G & D Hanks /10-27 Pad
Location ID: 419217

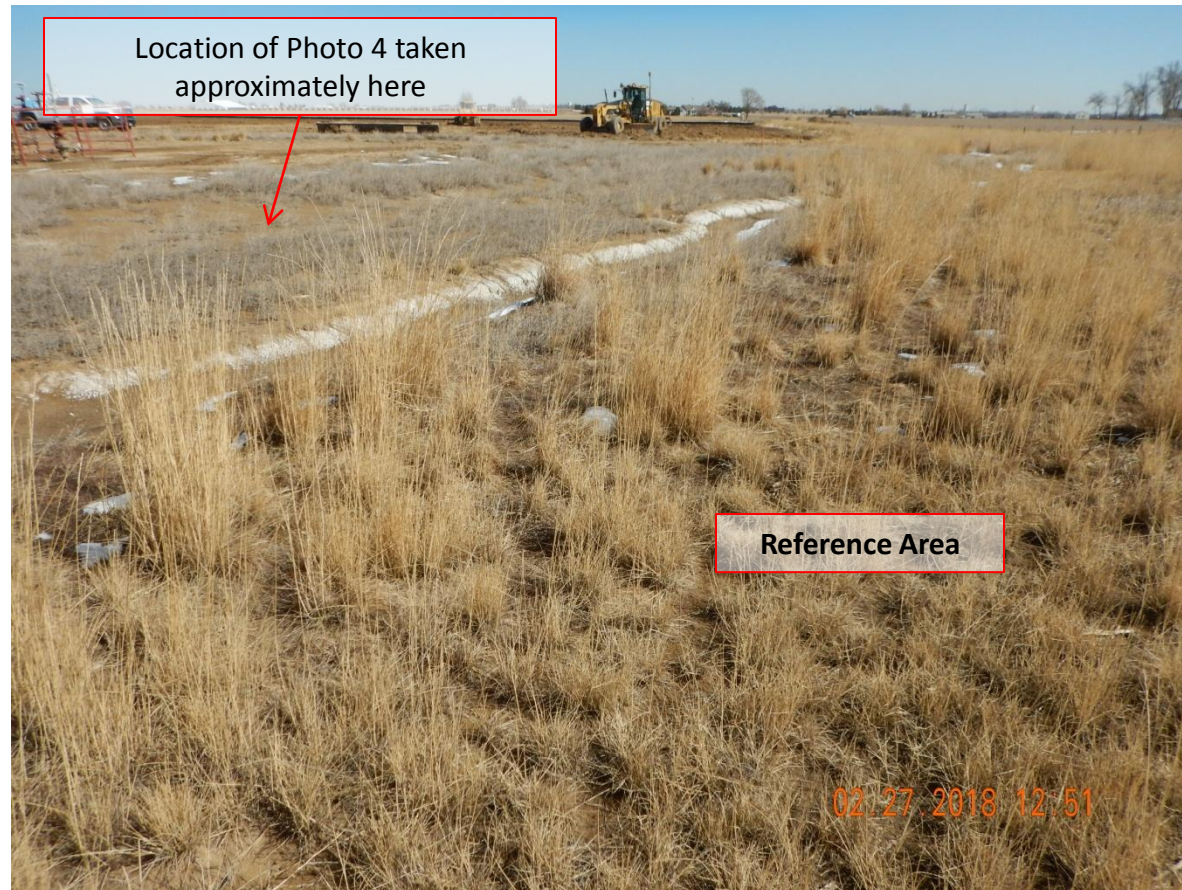


Photo 6. Reference photo taken south of the location, facing East. See comments under Photo 1. Reference area vegetation mainly consists of, but not limited to, Intermediate wheatgrass (*Thinopyrum intermedium*), Crested wheatgrass (*Agropyron cristatum*), Smooth brome (*Bromus inermis*) and Salt grass (*Distichlis spicata*).

Inspection Photos
Location Name: G & D Hanks /10-27 Pad
Location ID: 419217



Photo 7. Photo taken from the southern location, facing West. Photo illustrates stormwater runoff from location.



Photo 8. Photo taken from the southern location, facing North. See comments under Photo 6.

Inspection Photos
Location Name: G & D Hanks /10-27 Pad
Location ID: 419217



Photo 9. Photo taken from the southern location, facing East. See comments under Photo 6.

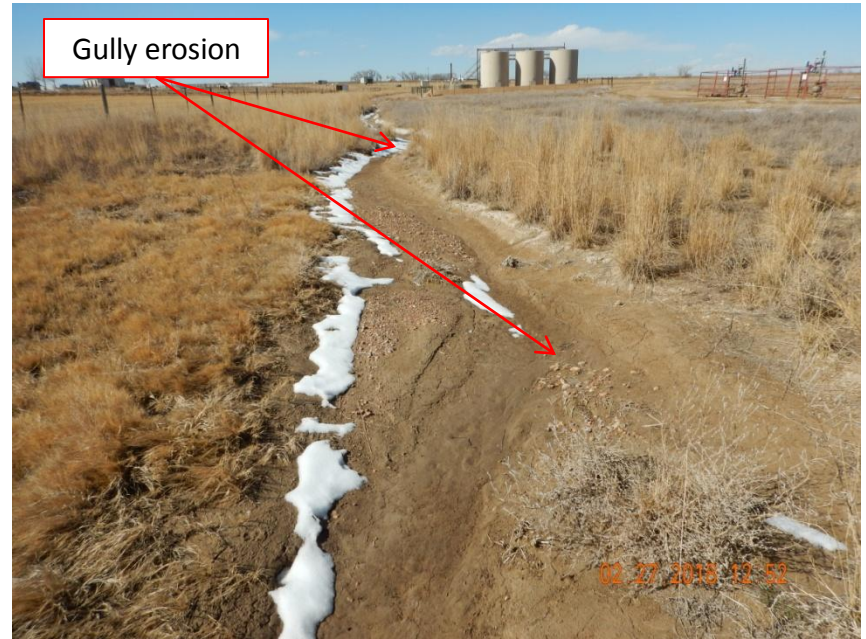


Photo 10. Photo taken east off location, facing West. Gully erosion evident from stormwater runoff from location.