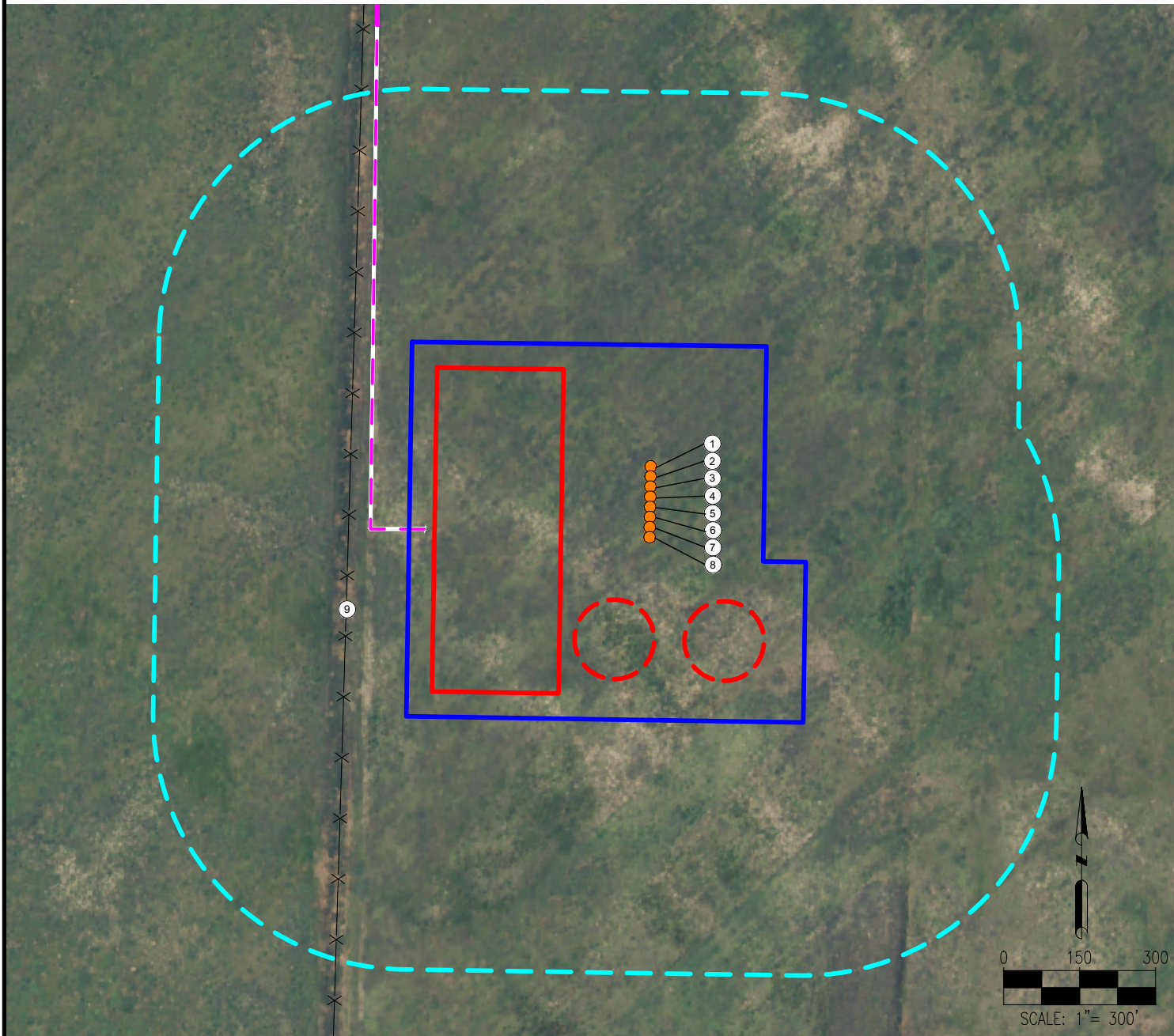


SHELDUCK SOUTH PAD LOCATION DRAWING



- | | |
|----------------------|---------------------|
| 1. SHELDUCK 6-5-9HN | 9. FENCE IS ±594' W |
| 2. SHELDUCK 6-5-10HN | |
| 3. SHELDUCK 6-5-11HC | |
| 4. SHELDUCK 6-5-12HN | |
| 5. SHELDUCK 6-5-13HN | |
| 6. SHELDUCK 6-5-14HN | |
| 7. SHELDUCK 6-5-15HC | |
| 8. SHELDUCK 6-5-16HN | |

LEGEND: = PROPOSED ACCESS ROAD = PROPOSED WELL = FENCE = DISTURBANCE AREA = 500' RADIUS = PROPOSED FACILITY BERM = PROPOSED MLVT		MEASURED FROM NEAREST WELL OR FACILITY: BUILDING ±3294' NW BUILDING UNIT ±3370' NW PUBLIC ROAD (COUNTY ROAD 86) ±3619' N PROPERTY LINE (PURCELL CONSERVATION GROUP LLC) ±201' W UTILITY (POWERLINE) ±3665' N RAILROAD ±5280' SW MEASURED FROM NEAREST EDGE OF DISTURBANCE: SURFACE WATER (WETLAND) ±5039' SW	REFERENCE LOCATION **SHELDUCK 6-5-12HN** LAT: 40.600730° N LONG: 104.142971° W ELEVATION: 4954' 1382' FSL & 629' FWL PDOP: 1.2 GPS OPERATOR: RYAN DESMOND	
DISCLAIMER: THIS PLOT DOES NOT REPRESENT A MONUMENTED LAND SURVEY AND SHOULD NOT BE RELIED UPON TO DETERMINE BOUNDARY LINES, PROPERTY OWNERSHIP OR OTHER PROPERTY INTERESTS. PARCEL LINES, IF DEPICTED HAVE NOT BEEN FIELD VERIFIED AND MAY BE BASED UPON PUBLICLY AVAILABLE DATA THAT ALSO HAS NOT BEEN INDEPENDENTLY VERIFIED.		DATA SOURCE: AERIAL IMAGERY: NAIP 2015 WATER WELLS: COLORADO DWR NHD: USGS PUBLICLY AVAILABLE DATA SOURCES HAVE NOT BEEN INDEPENDENTLY VERIFIED BY ASCENT.	MEASURED FROM NEAREST EDGE OF DISTURBANCE: WATER WELL ±2035' NE SWL = 80' PERMIT: 13410 RECEIPT: 9061580 DISTURBANCE ACREAGE: 12.5 ACRES DRILLING OPERATIONS 7.4 ACRES INTERIM RECLAIM CURRENT SURFACE USE: RANGELAND FUTURE SURFACE USE: RANGELAND	
7535 Hilltop Circle Denver, CO 80221 (303) 928-7128 www.ascentgeomatics.com		FIELD DATE: 12-14-17 DRAWING DATE: 12-26-17 BY: DJP CHECKED: CLP SITE NAME: SHELDUCK SOUTH PAD SURFACE LOCATION: LOT 6 SW 1/4 SEC. 6, T7N, R60W, 6TH P.M. WELD COUNTY, COLORADO		PREPARED FOR: