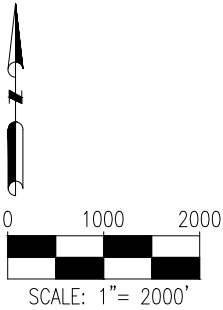
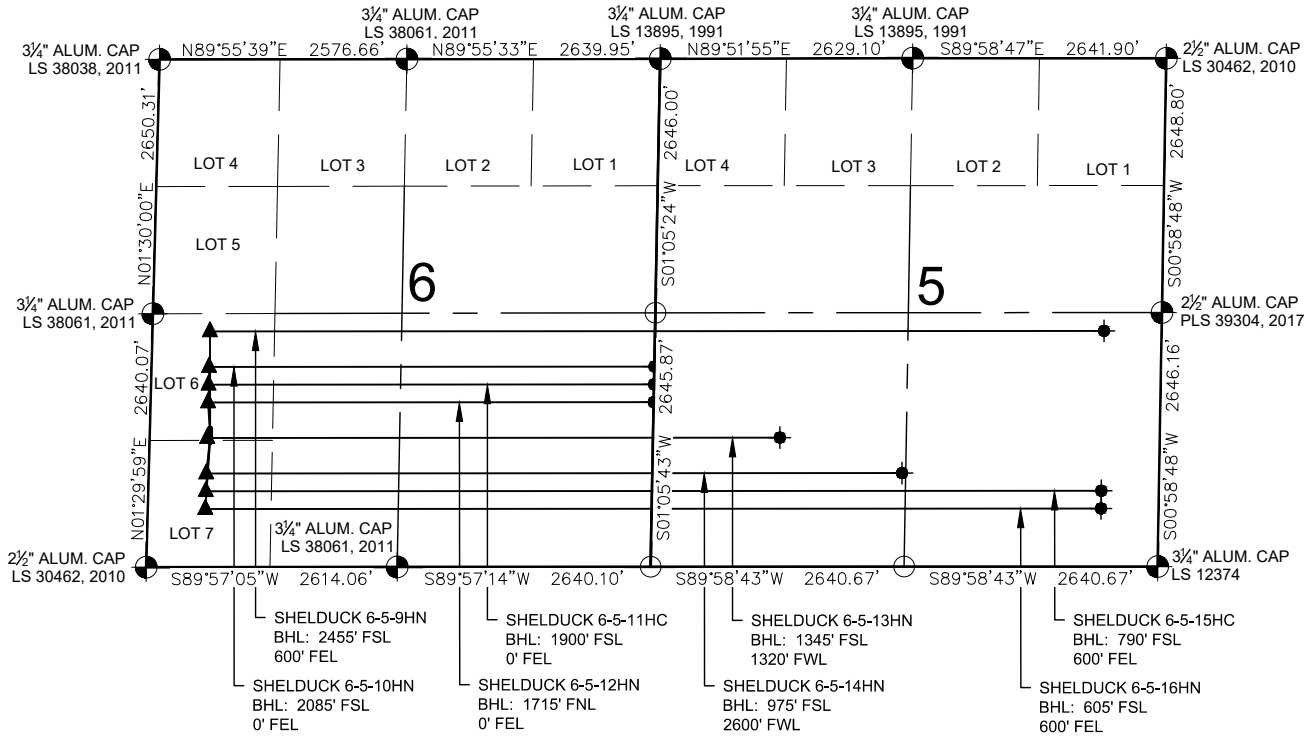


SHELDUCK SOUTH PAD MULTI-WELL PLAN



LEGEND

- = EXISTING MONUMENT
- = CALCULATED POSITION
- = PROPOSED WELL
- ◆ = EXISTING WELL
- ▲ = LANDING POINT
- LP = LANDING POINT
- BHL = BOTTOM HOLE LOCATION

NOTES:

- THIS FIELD SURVEY CONFORMS TO THE MINIMUM STANDARDS SET BY THE C.O.G.C.C., RULE NO. 215
- ALL DISTANCES AND BEARINGS SHOWN HEREON ARE GROUND VALUES AS GPS MEASURED IN THE FIELD, WITH TIES TO WELLS MEASURED PERPENDICULAR TO SECTION LINES. THIS LOW DISTORTION PROJECTION (LDP) IS BASED ON THE NORTH AMERICAN DATUM OF 1983, U.S. SURVEY FOOT WITH A LATITUDE ORIGIN OF 40.655085°N, A CENTRAL MERIDIAN LONGITUDE OF 104.086861°W, AND A SCALE FACTOR ON THE CENTRAL MERIDIAN OF 1.000232 (EXACT). THE LDP BASIS OF BEARINGS IS GEODETIC NORTH.
- FIELD VERIFICATION OF MONUMENTS COMPLETED WITHIN 1 YEAR OF SIGNATURE DATE.

NOTES:

- SHELDUCK 6-5-9HN TO BE AT 1442' FSL & 628' FWL. BOTTOM HOLE AT 2455' FSL & 600' FEL, SEC. 5.
- SHELDUCK 6-5-10HN TO BE AT 1422' FSL & 629' FWL. BOTTOM HOLE AT 2085' FSL & 0' FEL, SEC. 6.
- SHELDUCK 6-5-11HC TO BE AT 1402' FSL & 629' FWL. BOTTOM HOLE AT 1900' FSL & 0' FEL, SEC. 6.
- SHELDUCK 6-5-12HN TO BE AT 1382' FSL & 629' FWL. BOTTOM HOLE AT 1715' FSL & 0' FEL, SEC. 6.
- SHELDUCK 6-5-13HN TO BE AT 1362' FSL & 629' FWL. BOTTOM HOLE AT 1345' FSL & 1320' FWL, SEC. 5.
- SHELDUCK 6-5-14HN TO BE AT 1342' FSL & 629' FWL. BOTTOM HOLE AT 975' FSL & 2600' FWL, SEC. 5.
- SHELDUCK 6-5-15HC TO BE AT 1322' FSL & 630' FWL. BOTTOM HOLE AT 790' FSL & 600' FEL, SEC. 5.
- SHELDUCK 6-5-16HN TO BE AT 1302' FSL & 630' FWL. BOTTOM HOLE AT 605' FSL & 600' FEL, SEC. 5.