

BISON OIL & GAS II, LLC

WELD COUNTY, COLORADO (NAD 83)

SW NW SEC. 8 T9N R59W 6th P.M.

TIMBRO 9-59 8A-9-7

ORIGINAL WELLBORE

07 February, 2018

Plan: PROPOSAL #1





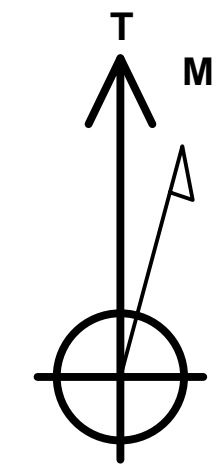
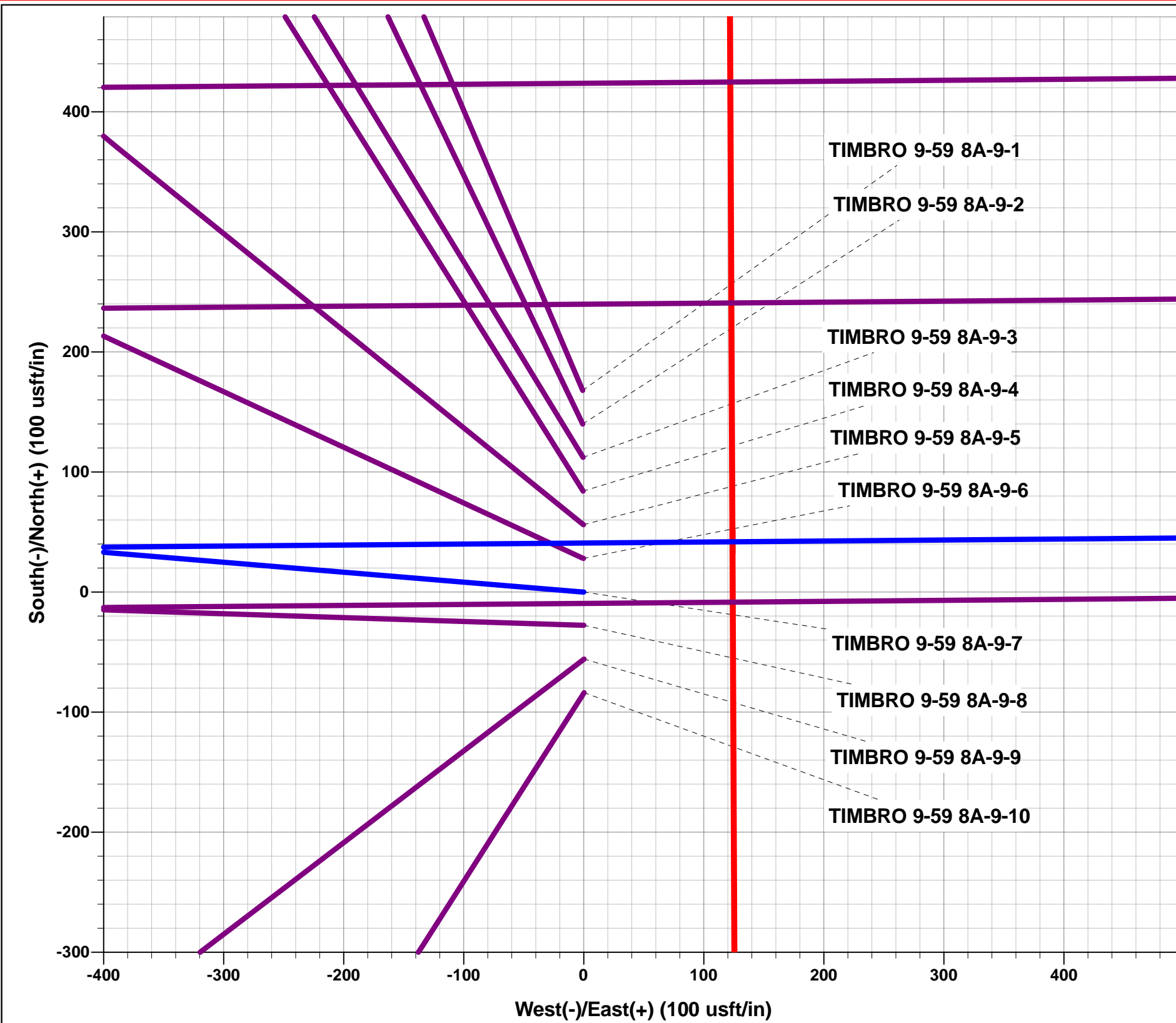
Project: WELD COUNTY, COLORADO (NAD 83)
Site: SW NW SEC. 8 T9N R59W 6th P.M.
Well: TIMBRO 9-59 8A-9-7
Wellbore: ORIGINAL WELLBORE
Design: PROPOSAL #1

ANNOTATIONS

TVD	MD	Inc	Azi	+N/-S	+E/-W	VSect	Dep	Annotation
0.00	0.00	0.00	0.00	0.00	0.00	0.00	0.00	SHL: 1840ft FNL & 475ft FWL of Sec 8
700.00	700.00	0.00	0.00	0.00	0.00	0.00	0.00	START NUDGE (2°/100ft BUR)
1295.62	1300.00	12.00	274.74	5.17	-62.39	-62.32	62.60	EOB TO 12° INC
2821.52	2859.99	12.00	274.74	31.94	-385.62	-385.19	386.94	END OF TANGENT
3417.14	3459.99	0.00	0.00	37.11	-448.01	-447.51	449.54	EOD TO VERTICAL
5631.74	5674.58	0.00	0.00	37.11	-448.01	-447.51	449.54	KOP (10°/100ft BUR)
6204.70	6574.58	90.00	89.52	41.91	124.93	125.45	1022.50	BPI: 1799ft FNL & 600ft FWL of Sec 8
6204.70	15856.39	90.00	89.51	120.22	9406.40	9407.17	10304.30	EPI: 1801ft FNL & 600ft FEL of Sec 9
6204.70	15857.96	90.00	89.56	120.23	9407.97	9408.74	10305.87	EOT TO 89.56° AZ
6204.70	16156.11	90.00	89.56	122.52	9706.11	9706.89	10604.03	BHL: 1799ft FNL & 300ft FEL of Sec 9

WELLBORE TARGET DETAILS (LAT/LONG)

Name	TVD	+N/-S	+E/-W	Latitude	Longitude
KOP - TIMBRO 9-59 8A-9-7	5631.74	37.11	-448.01	40.767344	-104.011635
BPI - TIMBRO 9-59 8A-9-7	6204.70	41.91	124.93	40.767357	-104.009567
EPI - TIMBRO 9-59 8A-9-7	6204.70	120.22	9406.40	40.767567	-103.976060
BHL - TIMBRO 9-59 8A-9-7	6204.70	122.52	9706.11	40.767573	-103.974978



Azimuths to True North
Magnetic North: 7.76°

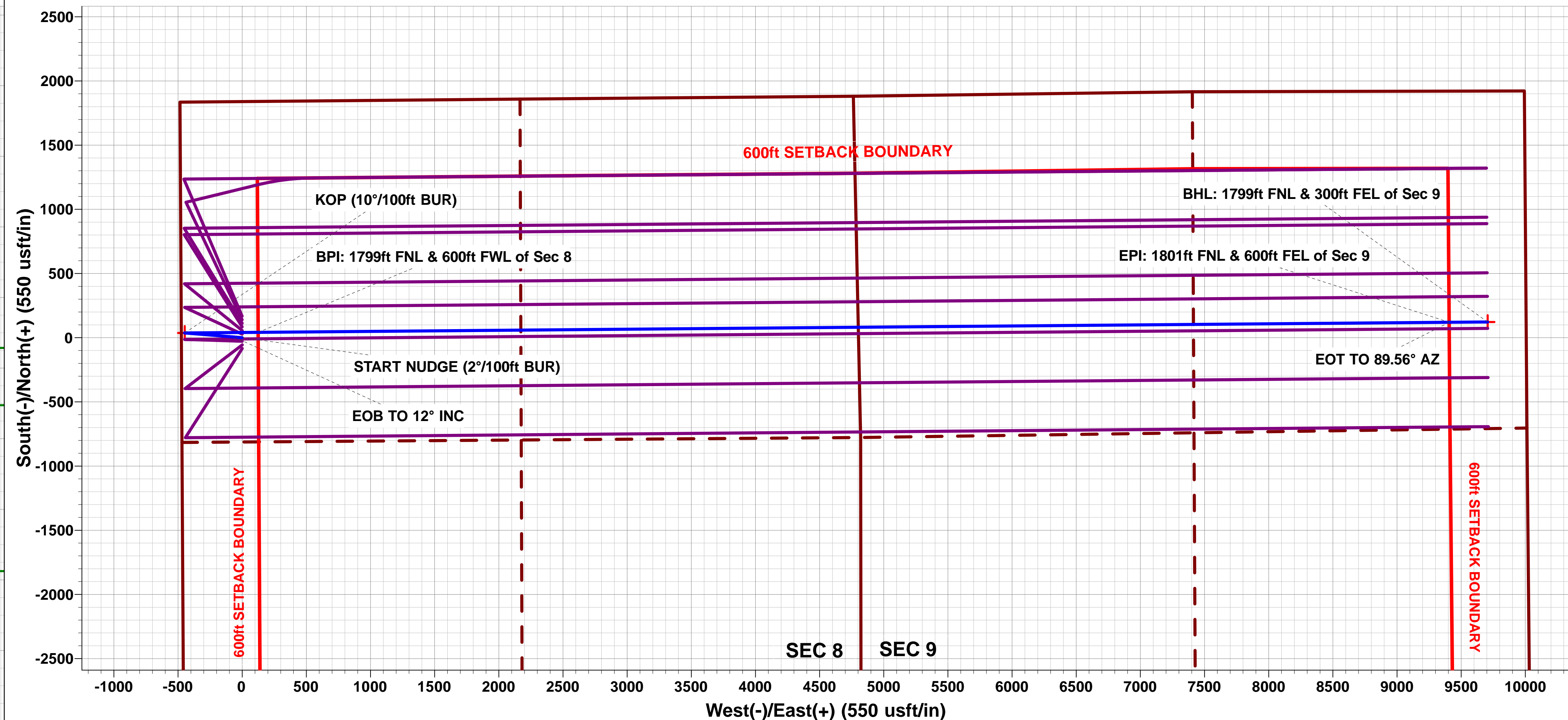
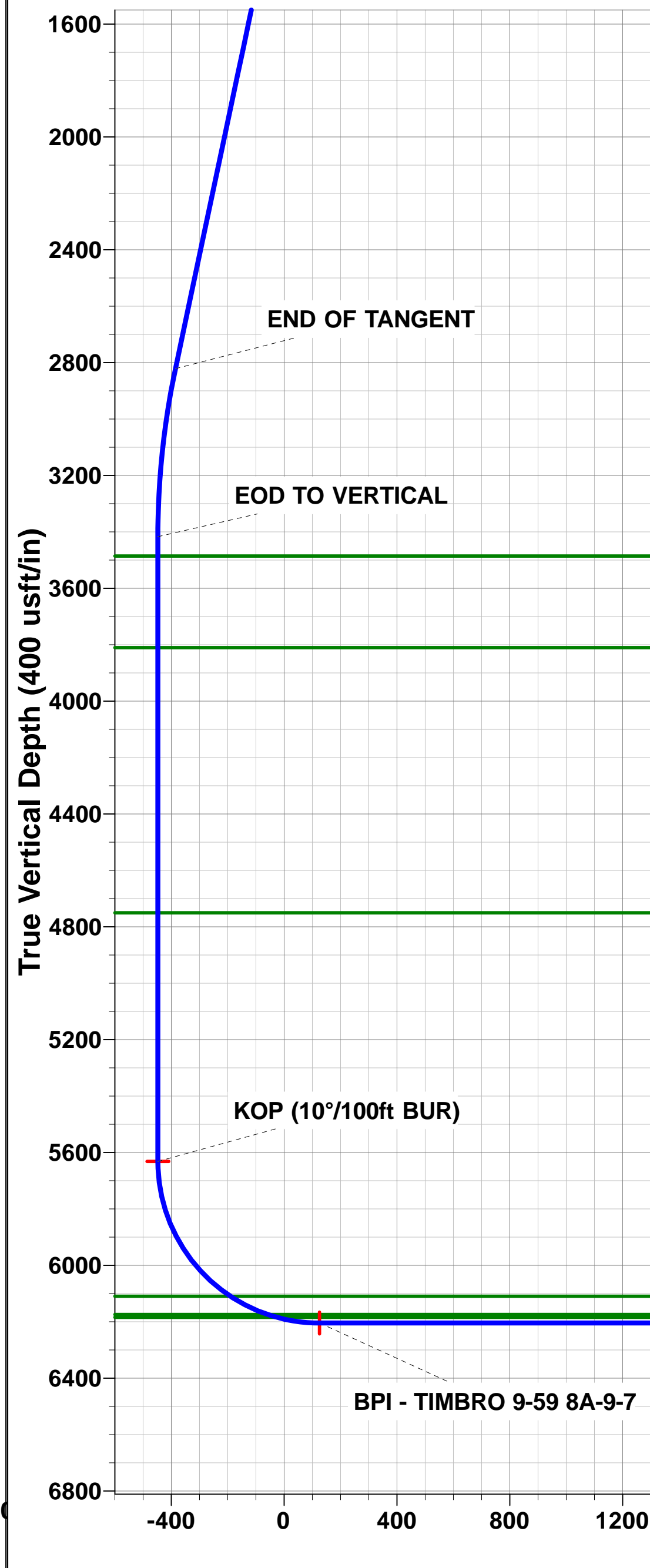
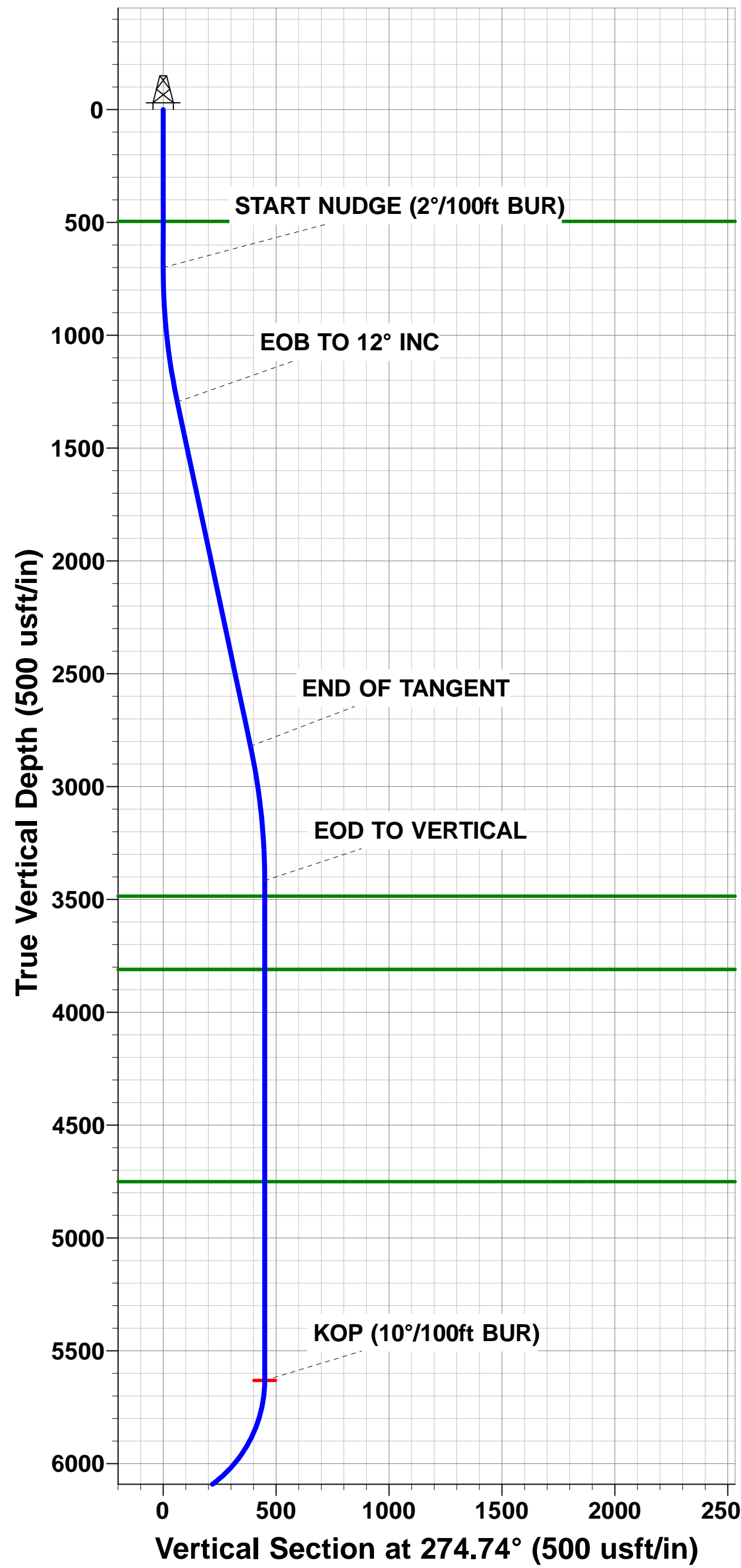
Magnetic Field
Strength: 52582.7snT
Dip Angle: 67.24°
Date: 07/02/2018
Model: IGRF2015

FORMATION TOP DETAILS

TVDPath	MDPath	Formation
495.70	495.70	PIERRE SHALE
3485.70	3528.54	PARKMAN
3810.70	3853.54	SUSSEX
4750.70	4793.54	SHANNON
6109.70	6239.91	SHARON SPRINGS SHALE
6174.70	6388.36	NIORARA FORMATION
6184.70	6422.75	NIORARA A CHALK

PROPOSED LOCAL COORDINATES:

SHL: 1840ft FNL & 475ft FWL of Sec 8
BEGIN PROD INT: 1799ft FNL & 600ft FWL of Sec 8
END PROD INTERVAL: 1801ft FNL & 600ft FEL of Sec 9
BHL: 1799ft FNL & 300ft FEL of Sec 9



EPI - TIMBRO 9-59 8A-9-7
EOT TO 89.56° AZ
BHL - TIMBRO 9-59 8A-9-7

Planning Report



Database:	EDM 5000.1 Single User Db	Local Co-ordinate Reference:	Well TIMBRO 9-59 8A-9-7
Company:	BISON OIL & GAS II, LLC	TVD Reference:	KB-EST @ 5100.70usft (Original Well Elev)
Project:	WELD COUNTY, COLORADO (NAD 83)	MD Reference:	KB-EST @ 5100.70usft (Original Well Elev)
Site:	SW NW SEC. 8 T9N R59W 6th P.M.	North Reference:	True
Well:	TIMBRO 9-59 8A-9-7	Survey Calculation Method:	Minimum Curvature
Wellbore:	ORIGINAL WELLBORE		
Design:	PROPOSAL #1		

Project	WELD COUNTY, COLORADO (NAD 83)		
Map System:	US State Plane 1983	System Datum:	Mean Sea Level
Geo Datum:	North American Datum 1983		
Map Zone:	Colorado Northern Zone		Using geodetic scale factor

Site	SW NW SEC. 8 T9N R59W 6th P.M.		
Site Position:		Northing:	1,525,987.12 usft
From:	Lat/Long	Easting:	3,412,704.28 usft
Position Uncertainty:	0.00 usft	Slot Radius:	1.10000ft
		Latitude:	40.767703
		Longitude:	-104.010021
		Grid Convergence:	0.96 °

Well	TIMBRO 9-59 8A-9-7		
Well Position	+N-S	-167.97 usft	Northing: 1,525,819.19 usft
	+E-W	0.83 usft	Easting: 3,412,707.93 usft
Position Uncertainty		0.00 usft	Wellhead Elevation: usft
			Latitude: 40.767242
			Longitude: -104.010018
			Ground Level: 5,075.70 usft

Wellbore	ORIGINAL WELLBORE				
Magnetics	Model Name	Sample Date	Declination (°)	Dip Angle (°)	Field Strength (nT)
	IGRF2015	07/02/2018	7.76	67.24	52,583

Design	PROPOSAL #1			
Audit Notes:				
Version:	Phase:	PROTOTYPE	Tie On Depth:	0.00
Vertical Section:	Depth From (TVD) (usft)	+N-S (usft)	+E-W (usft)	Direction (°)
	6,204.70	0.00	0.00	89.28

Plan Sections											
MD (usft)	Inc (°)	Azi (°)	Vertical Depth	SS (usft)	+N-S (usft)	+E-W (usft)	Dogleg Rate (°/100usf)	Build Rate (°/100usf)	Turn Rate (°/100usf)	TFO (°)	Target
0.00	0.00	0.00	0.00	-5,100.70	0.00	0.00	0.00	0.00	0.00	0.00	
700.00	0.00	0.00	700.00	-4,400.70	0.00	0.00	0.00	0.00	0.00	0.00	
1,300.00	12.00	274.74	1,295.62	-3,805.08	5.17	-62.39	2.00	2.00	0.00	274.74	
2,859.99	12.00	274.74	2,821.52	-2,279.18	31.94	-385.62	0.00	0.00	0.00	0.00	
3,459.99	0.00	0.00	3,417.14	-1,683.56	37.11	-448.01	2.00	-2.00	0.00	180.00	
5,674.58	0.00	0.00	5,631.74	531.04	37.11	-448.01	0.00	0.00	0.00	0.00	KOP - TIMBRO 9-5
6,574.58	90.00	89.52	6,204.70	1,104.00	41.91	124.93	10.00	10.00	9.95	89.52	BPI - TIMBRO 9-59
15,856.39	90.00	89.51	6,204.70	1,104.00	120.22	9,406.40	0.00	0.00	0.00	-86.77	EPI - TIMBRO 9-59
15,857.96	90.00	89.56	6,204.70	1,104.00	120.23	9,407.97	3.00	0.00	3.00	90.00	
16,156.11	90.00	89.56	6,204.70	1,104.00	122.52	9,706.11	0.00	0.00	0.00	0.00	BHL - TIMBRO 9-59

Planning Report



Database:	EDM 5000.1 Single User Db	Local Co-ordinate Reference:	Well TIMBRO 9-59 8A-9-7
Company:	BISON OIL & GAS II, LLC	TVD Reference:	KB-EST @ 5100.70usft (Original Well Elev)
Project:	WELD COUNTY, COLORADO (NAD 83)	MD Reference:	KB-EST @ 5100.70usft (Original Well Elev)
Site:	SW NW SEC. 8 T9N R59W 6th P.M.	North Reference:	True
Well:	TIMBRO 9-59 8A-9-7	Survey Calculation Method:	Minimum Curvature
Wellbore:	ORIGINAL WELLBORE		
Design:	PROPOSAL #1		

Planned Survey

MD (usft)	Inc (°)	Azi (°)	TVD (usft)	SS (usft)	+N/-S (usft)	+E/-W (usft)	Vertical Section (usft)	Dogleg Rate (°/100usft)	Build Rate (°/100usft)	Turn Rate (°/100usft)
SHL: 1840ft FNL & 475ft FWL of Sec 8										
0.00	0.00	0.00	0.00	5,100.70	0.00	0.00	0.00	0.00	0.00	0.00
100.00	0.00	0.00	100.00	5,000.70	0.00	0.00	0.00	0.00	0.00	0.00
200.00	0.00	0.00	200.00	4,900.70	0.00	0.00	0.00	0.00	0.00	0.00
300.00	0.00	0.00	300.00	4,800.70	0.00	0.00	0.00	0.00	0.00	0.00
400.00	0.00	0.00	400.00	4,700.70	0.00	0.00	0.00	0.00	0.00	0.00
PIERRE SHALE (BASE OF FOX HILLS)										
495.70	0.00	0.00	495.70	4,605.00	0.00	0.00	0.00	0.00	0.00	0.00
500.00	0.00	0.00	500.00	4,600.70	0.00	0.00	0.00	0.00	0.00	0.00
600.00	0.00	0.00	600.00	4,500.70	0.00	0.00	0.00	0.00	0.00	0.00
START NUDGE (2°/100ft BUR)										
700.00	0.00	0.00	700.00	4,400.70	0.00	0.00	0.00	0.00	0.00	0.00
800.00	2.00	274.74	799.98	4,300.72	0.14	-1.74	-1.74	2.00	2.00	0.00
900.00	4.00	274.74	899.84	4,200.86	0.58	-6.95	-6.95	2.00	2.00	0.00
1,000.00	6.00	274.74	999.45	4,101.25	1.30	-15.64	-15.62	2.00	2.00	0.00
1,100.00	8.00	274.74	1,098.70	4,002.00	2.30	-27.78	-27.75	2.00	2.00	0.00
1,200.00	10.00	274.74	1,197.47	3,903.23	3.59	-43.37	-43.33	2.00	2.00	0.00
EOB TO 12° INC										
1,300.00	12.00	274.74	1,295.62	3,805.08	5.17	-62.39	-62.32	2.00	2.00	0.00
1,400.00	12.00	274.74	1,393.44	3,707.26	6.88	-83.11	-83.02	0.00	0.00	0.00
1,500.00	12.00	274.74	1,491.25	3,609.45	8.60	-103.83	-103.71	0.00	0.00	0.00
1,600.00	12.00	274.74	1,589.07	3,511.63	10.32	-124.55	-124.41	0.00	0.00	0.00
1,700.00	12.00	274.74	1,686.88	3,413.82	12.03	-145.27	-145.11	0.00	0.00	0.00
1,800.00	12.00	274.74	1,784.70	3,316.00	13.75	-165.99	-165.80	0.00	0.00	0.00
1,900.00	12.00	274.74	1,882.51	3,218.19	15.47	-186.71	-186.50	0.00	0.00	0.00
2,000.00	12.00	274.74	1,980.33	3,120.37	17.18	-207.43	-207.20	0.00	0.00	0.00
2,100.00	12.00	274.74	2,078.14	3,022.56	18.90	-228.15	-227.89	0.00	0.00	0.00
2,200.00	12.00	274.74	2,175.96	2,924.74	20.61	-248.87	-248.59	0.00	0.00	0.00
2,300.00	12.00	274.74	2,273.77	2,826.93	22.33	-269.59	-269.29	0.00	0.00	0.00
2,400.00	12.00	274.74	2,371.59	2,729.11	24.05	-290.31	-289.98	0.00	0.00	0.00
2,500.00	12.00	274.74	2,469.40	2,631.30	25.76	-311.03	-310.68	0.00	0.00	0.00
2,600.00	12.00	274.74	2,567.22	2,533.48	27.48	-331.75	-331.38	0.00	0.00	0.00
2,700.00	12.00	274.74	2,665.03	2,435.67	29.20	-352.47	-352.08	0.00	0.00	0.00
2,800.00	12.00	274.74	2,762.84	2,337.86	30.91	-373.19	-372.77	0.00	0.00	0.00
END OF TANGENT										
2,859.99	12.00	274.74	2,821.52	2,279.18	31.94	-385.62	-385.19	0.00	0.00	0.00
2,900.00	11.20	274.74	2,860.72	2,239.98	32.61	-393.64	-393.20	2.00	-2.00	0.00
3,000.00	9.20	274.74	2,959.13	2,141.57	34.07	-411.29	-410.82	2.00	-2.00	0.00
3,100.00	7.20	274.74	3,058.10	2,042.60	35.25	-425.50	-425.02	2.00	-2.00	0.00
3,200.00	5.20	274.74	3,157.51	1,943.19	36.14	-436.26	-435.77	2.00	-2.00	0.00
3,300.00	3.20	274.74	3,257.24	1,843.46	36.74	-443.56	-443.06	2.00	-2.00	0.00
3,400.00	1.20	274.74	3,357.16	1,743.54	37.06	-447.38	-446.88	2.00	-2.00	0.00
EOD TO VERTICAL										
3,459.99	0.00	0.00	3,417.14	1,683.56	37.11	-448.01	-447.51	2.00	-2.00	0.00
3,500.00	0.00	0.00	3,457.16	1,643.54	37.11	-448.01	-447.51	0.00	0.00	0.00
PARKMAN										
3,528.54	0.00	0.00	3,485.70	1,615.00	37.11	-448.01	-447.51	0.00	0.00	0.00
3,600.00	0.00	0.00	3,557.16	1,543.54	37.11	-448.01	-447.51	0.00	0.00	0.00
3,700.00	0.00	0.00	3,657.16	1,443.54	37.11	-448.01	-447.51	0.00	0.00	0.00
3,800.00	0.00	0.00	3,757.16	1,343.54	37.11	-448.01	-447.51	0.00	0.00	0.00
SUSSEX										
3,853.54	0.00	0.00	3,810.70	1,290.00	37.11	-448.01	-447.51	0.00	0.00	0.00
3,900.00	0.00	0.00	3,857.16	1,243.54	37.11	-448.01	-447.51	0.00	0.00	0.00

Planning Report



Database:	EDM 5000.1 Single User Db	Local Co-ordinate Reference:	Well TIMBRO 9-59 8A-9-7
Company:	BISON OIL & GAS II, LLC	TVD Reference:	KB-EST @ 5100.70usft (Original Well Elev)
Project:	WELD COUNTY, COLORADO (NAD 83)	MD Reference:	KB-EST @ 5100.70usft (Original Well Elev)
Site:	SW NW SEC. 8 T9N R59W 6th P.M.	North Reference:	True
Well:	TIMBRO 9-59 8A-9-7	Survey Calculation Method:	Minimum Curvature
Wellbore:	ORIGINAL WELLBORE		
Design:	PROPOSAL #1		

Planned Survey										
MD (usft)	Inc (°)	Azi (°)	TVD (usft)	SS (usft)	+N/-S (usft)	+E/-W (usft)	Vertical Section (usft)	Dogleg Rate (°/100usft)	Build Rate (°/100usft)	Turn Rate (°/100usft)
4,000.00	0.00	0.00	3,957.16	1,143.54	37.11	-448.01	-447.51	0.00	0.00	0.00
4,100.00	0.00	0.00	4,057.16	1,043.54	37.11	-448.01	-447.51	0.00	0.00	0.00
4,200.00	0.00	0.00	4,157.16	943.54	37.11	-448.01	-447.51	0.00	0.00	0.00
4,300.00	0.00	0.00	4,257.16	843.54	37.11	-448.01	-447.51	0.00	0.00	0.00
4,400.00	0.00	0.00	4,357.16	743.54	37.11	-448.01	-447.51	0.00	0.00	0.00
4,500.00	0.00	0.00	4,457.16	643.54	37.11	-448.01	-447.51	0.00	0.00	0.00
4,600.00	0.00	0.00	4,557.16	543.54	37.11	-448.01	-447.51	0.00	0.00	0.00
4,700.00	0.00	0.00	4,657.16	443.54	37.11	-448.01	-447.51	0.00	0.00	0.00
SHANNON										
4,793.54	0.00	0.00	4,750.70	350.00	37.11	-448.01	-447.51	0.00	0.00	0.00
4,800.00	0.00	0.00	4,757.16	343.54	37.11	-448.01	-447.51	0.00	0.00	0.00
4,900.00	0.00	0.00	4,857.16	243.54	37.11	-448.01	-447.51	0.00	0.00	0.00
5,000.00	0.00	0.00	4,957.16	143.54	37.11	-448.01	-447.51	0.00	0.00	0.00
5,100.00	0.00	0.00	5,057.16	43.54	37.11	-448.01	-447.51	0.00	0.00	0.00
5,200.00	0.00	0.00	5,157.16	-56.46	37.11	-448.01	-447.51	0.00	0.00	0.00
5,300.00	0.00	0.00	5,257.16	-156.46	37.11	-448.01	-447.51	0.00	0.00	0.00
5,400.00	0.00	0.00	5,357.16	-256.46	37.11	-448.01	-447.51	0.00	0.00	0.00
5,500.00	0.00	0.00	5,457.16	-356.46	37.11	-448.01	-447.51	0.00	0.00	0.00
5,600.00	0.00	0.00	5,557.16	-456.46	37.11	-448.01	-447.51	0.00	0.00	0.00
KOP (10°/100ft BUR)										
5,674.58	0.00	0.00	5,631.74	-531.04	37.11	-448.01	-447.51	0.00	0.00	0.00
5,700.00	2.54	89.52	5,657.15	-556.45	37.11	-447.45	-446.94	10.00	10.00	0.00
5,800.00	12.54	89.52	5,756.16	-655.46	37.22	-434.34	-433.83	10.00	10.00	0.00
5,900.00	22.54	89.52	5,851.39	-750.69	37.48	-404.24	-403.73	10.00	10.00	0.00
6,000.00	32.54	89.52	5,939.94	-839.24	37.86	-358.06	-357.55	10.00	10.00	0.00
6,100.00	42.54	89.52	6,019.13	-918.43	38.37	-297.21	-296.70	10.00	10.00	0.00
6,200.00	52.54	89.52	6,086.55	-985.85	38.99	-223.52	-223.01	10.00	10.00	0.00
SHARON SPRINGS SHALE										
6,239.91	56.53	89.52	6,109.70	-1,009.00	39.26	-191.03	-190.52	10.00	10.00	0.00
6,300.00	62.54	89.52	6,140.15	-1,039.45	39.69	-139.26	-138.74	10.00	10.00	0.00
NIORARA FORMATION										
6,388.36	71.38	89.52	6,174.70	-1,074.00	40.37	-58.03	-57.52	10.00	10.00	0.00
6,400.00	72.54	89.52	6,178.31	-1,077.61	40.47	-46.96	-46.45	10.00	10.00	0.00
NIORARA A CHALK										
6,422.75	74.82	89.52	6,184.70	-1,084.00	40.65	-25.13	-24.61	10.00	10.00	0.00
6,500.00	82.54	89.52	6,199.85	-1,099.15	41.28	50.56	51.07	10.00	10.00	0.00
BPI: 1799ft FNL & 600ft FWL of Sec 8										
6,574.58	90.00	89.52	6,204.70	-1,104.00	41.91	124.93	125.45	10.00	10.00	0.00
6,600.00	90.00	89.52	6,204.70	-1,104.00	42.12	150.34	150.86	0.00	0.00	0.00
6,700.00	90.00	89.52	6,204.70	-1,104.00	42.96	250.34	250.86	0.00	0.00	0.00
6,800.00	90.00	89.52	6,204.70	-1,104.00	43.79	350.34	350.86	0.00	0.00	0.00
6,900.00	90.00	89.52	6,204.70	-1,104.00	44.63	450.33	450.86	0.00	0.00	0.00
7,000.00	90.00	89.52	6,204.70	-1,104.00	45.47	550.33	550.86	0.00	0.00	0.00
7,100.00	90.00	89.52	6,204.70	-1,104.00	46.31	650.32	650.86	0.00	0.00	0.00
7,200.00	90.00	89.52	6,204.70	-1,104.00	47.15	750.32	750.86	0.00	0.00	0.00
7,300.00	90.00	89.52	6,204.70	-1,104.00	47.98	850.32	850.86	0.00	0.00	0.00
7,400.00	90.00	89.52	6,204.70	-1,104.00	48.82	950.31	950.85	0.00	0.00	0.00
7,500.00	90.00	89.52	6,204.70	-1,104.00	49.66	1,050.31	1,050.85	0.00	0.00	0.00
7,600.00	90.00	89.52	6,204.70	-1,104.00	50.50	1,150.31	1,150.85	0.00	0.00	0.00
7,700.00	90.00	89.52	6,204.70	-1,104.00	51.34	1,250.30	1,250.85	0.00	0.00	0.00
7,800.00	90.00	89.52	6,204.70	-1,104.00	52.18	1,350.30	1,350.85	0.00	0.00	0.00
7,900.00	90.00	89.52	6,204.70	-1,104.00	53.02	1,450.30	1,450.85	0.00	0.00	0.00
8,000.00	90.00	89.52	6,204.70	-1,104.00	53.85	1,550.29	1,550.85	0.00	0.00	0.00

Planning Report



Database:	EDM 5000.1 Single User Db	Local Co-ordinate Reference:	Well TIMBRO 9-59 8A-9-7
Company:	BISON OIL & GAS II, LLC	TVD Reference:	KB-EST @ 5100.70usft (Original Well Elev)
Project:	WELD COUNTY, COLORADO (NAD 83)	MD Reference:	KB-EST @ 5100.70usft (Original Well Elev)
Site:	SW NW SEC. 8 T9N R59W 6th P.M.	North Reference:	True
Well:	TIMBRO 9-59 8A-9-7	Survey Calculation Method:	Minimum Curvature
Wellbore:	ORIGINAL WELLBORE		
Design:	PROPOSAL #1		

Planned Survey										
MD (usft)	Inc (°)	Azi (°)	TVD (usft)	SS (usft)	+N/-S (usft)	+E/-W (usft)	Vertical Section (usft)	Dogleg Rate (°/100usft)	Build Rate (°/100usft)	Turn Rate (°/100usft)
8,100.00	90.00	89.52	6,204.70	-1,104.00	54.69	1,650.29	1,650.85	0.00	0.00	0.00
8,200.00	90.00	89.52	6,204.70	-1,104.00	55.53	1,750.29	1,750.85	0.00	0.00	0.00
8,300.00	90.00	89.52	6,204.71	-1,104.01	56.37	1,850.28	1,850.85	0.00	0.00	0.00
8,400.00	90.00	89.52	6,204.71	-1,104.01	57.21	1,950.28	1,950.85	0.00	0.00	0.00
8,500.00	90.00	89.52	6,204.71	-1,104.01	58.05	2,050.28	2,050.84	0.00	0.00	0.00
8,600.00	90.00	89.52	6,204.71	-1,104.01	58.89	2,150.27	2,150.84	0.00	0.00	0.00
8,700.00	90.00	89.52	6,204.71	-1,104.01	59.73	2,250.27	2,250.84	0.00	0.00	0.00
8,800.00	90.00	89.52	6,204.71	-1,104.01	60.57	2,350.26	2,350.84	0.00	0.00	0.00
8,900.00	90.00	89.52	6,204.71	-1,104.01	61.41	2,450.26	2,450.84	0.00	0.00	0.00
9,000.00	90.00	89.52	6,204.71	-1,104.01	62.25	2,550.26	2,550.84	0.00	0.00	0.00
9,100.00	90.00	89.52	6,204.71	-1,104.01	63.09	2,650.25	2,650.84	0.00	0.00	0.00
9,200.00	90.00	89.52	6,204.71	-1,104.01	63.93	2,750.25	2,750.84	0.00	0.00	0.00
9,300.00	90.00	89.52	6,204.71	-1,104.01	64.78	2,850.25	2,850.84	0.00	0.00	0.00
9,400.00	90.00	89.52	6,204.71	-1,104.01	65.62	2,950.24	2,950.84	0.00	0.00	0.00
9,500.00	90.00	89.52	6,204.71	-1,104.01	66.46	3,050.24	3,050.84	0.00	0.00	0.00
9,600.00	90.00	89.52	6,204.71	-1,104.01	67.30	3,150.24	3,150.84	0.00	0.00	0.00
9,700.00	90.00	89.52	6,204.71	-1,104.01	68.14	3,250.23	3,250.83	0.00	0.00	0.00
9,800.00	90.00	89.52	6,204.71	-1,104.01	68.98	3,350.23	3,350.83	0.00	0.00	0.00
9,900.00	90.00	89.52	6,204.71	-1,104.01	69.82	3,450.23	3,450.83	0.00	0.00	0.00
10,000.00	90.00	89.52	6,204.71	-1,104.01	70.67	3,550.22	3,550.83	0.00	0.00	0.00
10,100.00	90.00	89.52	6,204.71	-1,104.01	71.51	3,650.22	3,650.83	0.00	0.00	0.00
10,200.00	90.00	89.52	6,204.71	-1,104.01	72.35	3,750.22	3,750.83	0.00	0.00	0.00
10,300.00	90.00	89.52	6,204.71	-1,104.01	73.19	3,850.21	3,850.83	0.00	0.00	0.00
10,400.00	90.00	89.52	6,204.71	-1,104.01	74.04	3,950.21	3,950.83	0.00	0.00	0.00
10,500.00	90.00	89.52	6,204.71	-1,104.01	74.88	4,050.20	4,050.83	0.00	0.00	0.00
10,600.00	90.00	89.52	6,204.71	-1,104.01	75.72	4,150.20	4,150.83	0.00	0.00	0.00
10,700.00	90.00	89.52	6,204.71	-1,104.01	76.56	4,250.20	4,250.83	0.00	0.00	0.00
10,800.00	90.00	89.52	6,204.71	-1,104.01	77.41	4,350.19	4,350.82	0.00	0.00	0.00
10,900.00	90.00	89.52	6,204.71	-1,104.01	78.25	4,450.19	4,450.82	0.00	0.00	0.00
11,000.00	90.00	89.52	6,204.71	-1,104.01	79.09	4,550.19	4,550.82	0.00	0.00	0.00
11,100.00	90.00	89.52	6,204.71	-1,104.01	79.94	4,650.18	4,650.82	0.00	0.00	0.00
11,200.00	90.00	89.52	6,204.71	-1,104.01	80.78	4,750.18	4,750.82	0.00	0.00	0.00
11,300.00	90.00	89.52	6,204.71	-1,104.01	81.62	4,850.18	4,850.82	0.00	0.00	0.00
11,400.00	90.00	89.52	6,204.71	-1,104.01	82.47	4,950.17	4,950.82	0.00	0.00	0.00
11,500.00	90.00	89.52	6,204.71	-1,104.01	83.31	5,050.17	5,050.82	0.00	0.00	0.00
11,600.00	90.00	89.52	6,204.71	-1,104.01	84.16	5,150.17	5,150.82	0.00	0.00	0.00
11,700.00	90.00	89.52	6,204.71	-1,104.01	85.00	5,250.16	5,250.82	0.00	0.00	0.00
11,800.00	90.00	89.52	6,204.71	-1,104.01	85.84	5,350.16	5,350.82	0.00	0.00	0.00
11,900.00	90.00	89.52	6,204.71	-1,104.01	86.69	5,450.15	5,450.81	0.00	0.00	0.00
12,000.00	90.00	89.52	6,204.71	-1,104.01	87.53	5,550.15	5,550.81	0.00	0.00	0.00
12,100.00	90.00	89.52	6,204.71	-1,104.01	88.38	5,650.15	5,650.81	0.00	0.00	0.00
12,200.00	90.00	89.52	6,204.71	-1,104.01	89.22	5,750.14	5,750.81	0.00	0.00	0.00
12,300.00	90.00	89.52	6,204.71	-1,104.01	90.07	5,850.14	5,850.81	0.00	0.00	0.00
12,400.00	90.00	89.52	6,204.71	-1,104.01	90.91	5,950.14	5,950.81	0.00	0.00	0.00
12,500.00	90.00	89.52	6,204.71	-1,104.01	91.76	6,050.13	6,050.81	0.00	0.00	0.00
12,600.00	90.00	89.52	6,204.71	-1,104.01	92.61	6,150.13	6,150.81	0.00	0.00	0.00
12,700.00	90.00	89.52	6,204.71	-1,104.01	93.45	6,250.13	6,250.81	0.00	0.00	0.00
12,800.00	90.00	89.52	6,204.71	-1,104.01	94.30	6,350.12	6,350.81	0.00	0.00	0.00
12,900.00	90.00	89.52	6,204.71	-1,104.01	95.14	6,450.12	6,450.81	0.00	0.00	0.00
13,000.00	90.00	89.52	6,204.71	-1,104.01	95.99	6,550.12	6,550.81	0.00	0.00	0.00
13,100.00	90.00	89.52	6,204.71	-1,104.01	96.84	6,650.11	6,650.80	0.00	0.00	0.00
13,200.00	90.00	89.51	6,204.71	-1,104.01	97.68	6,750.11	6,750.80	0.00	0.00	0.00
13,300.00	90.00	89.51	6,204.71	-1,104.01	98.53	6,850.10	6,850.80	0.00	0.00	0.00
13,400.00	90.00	89.51	6,204.71	-1,104.01	99.38	6,950.10	6,950.80	0.00	0.00	0.00

Planning Report



Database:	EDM 5000.1 Single User Db	Local Co-ordinate Reference:	Well TIMBRO 9-59 8A-9-7
Company:	BISON OIL & GAS II, LLC	TVD Reference:	KB-EST @ 5100.70usft (Original Well Elev)
Project:	WELD COUNTY, COLORADO (NAD 83)	MD Reference:	KB-EST @ 5100.70usft (Original Well Elev)
Site:	SW NW SEC. 8 T9N R59W 6th P.M.	North Reference:	True
Well:	TIMBRO 9-59 8A-9-7	Survey Calculation Method:	Minimum Curvature
Wellbore:	ORIGINAL WELLBORE		
Design:	PROPOSAL #1		

Planned Survey

MD (usft)	Inc (°)	Azi (°)	TVD (usft)	SS (usft)	+N/-S (usft)	+E/-W (usft)	Vertical Section (usft)	Dogleg Rate (°/100usft)	Build Rate (°/100usft)	Turn Rate (°/100usft)
13,500.00	90.00	89.51	6,204.71	-1,104.01	100.22	7,050.10	7,050.80	0.00	0.00	0.00
13,600.00	90.00	89.51	6,204.71	-1,104.01	101.07	7,150.09	7,150.80	0.00	0.00	0.00
13,700.00	90.00	89.51	6,204.71	-1,104.01	101.92	7,250.09	7,250.80	0.00	0.00	0.00
13,800.00	90.00	89.51	6,204.71	-1,104.01	102.76	7,350.09	7,350.80	0.00	0.00	0.00
13,900.00	90.00	89.51	6,204.71	-1,104.01	103.61	7,450.08	7,450.80	0.00	0.00	0.00
14,000.00	90.00	89.51	6,204.71	-1,104.01	104.46	7,550.08	7,550.80	0.00	0.00	0.00
14,100.00	90.00	89.51	6,204.71	-1,104.01	105.31	7,650.08	7,650.80	0.00	0.00	0.00
14,200.00	90.00	89.51	6,204.70	-1,104.00	106.15	7,750.07	7,750.80	0.00	0.00	0.00
14,300.00	90.00	89.51	6,204.70	-1,104.00	107.00	7,850.07	7,850.79	0.00	0.00	0.00
14,400.00	90.00	89.51	6,204.70	-1,104.00	107.85	7,950.07	7,950.79	0.00	0.00	0.00
14,500.00	90.00	89.51	6,204.70	-1,104.00	108.70	8,050.06	8,050.79	0.00	0.00	0.00
14,600.00	90.00	89.51	6,204.70	-1,104.00	109.55	8,150.06	8,150.79	0.00	0.00	0.00
14,700.00	90.00	89.51	6,204.70	-1,104.00	110.40	8,250.05	8,250.79	0.00	0.00	0.00
14,800.00	90.00	89.51	6,204.70	-1,104.00	111.24	8,350.05	8,350.79	0.00	0.00	0.00
14,900.00	90.00	89.51	6,204.70	-1,104.00	112.09	8,450.05	8,450.79	0.00	0.00	0.00
15,000.00	90.00	89.51	6,204.70	-1,104.00	112.94	8,550.04	8,550.79	0.00	0.00	0.00
15,100.00	90.00	89.51	6,204.70	-1,104.00	113.79	8,650.04	8,650.79	0.00	0.00	0.00
15,200.00	90.00	89.51	6,204.70	-1,104.00	114.64	8,750.04	8,750.79	0.00	0.00	0.00
15,300.00	90.00	89.51	6,204.70	-1,104.00	115.49	8,850.03	8,850.79	0.00	0.00	0.00
15,400.00	90.00	89.51	6,204.70	-1,104.00	116.34	8,950.03	8,950.78	0.00	0.00	0.00
15,500.00	90.00	89.51	6,204.70	-1,104.00	117.19	9,050.03	9,050.78	0.00	0.00	0.00
15,600.00	90.00	89.51	6,204.70	-1,104.00	118.04	9,150.02	9,150.78	0.00	0.00	0.00
15,700.00	90.00	89.51	6,204.70	-1,104.00	118.89	9,250.02	9,250.78	0.00	0.00	0.00
15,800.00	90.00	89.51	6,204.70	-1,104.00	119.74	9,350.01	9,350.78	0.00	0.00	0.00
EPI: 1801ft FNL & 600ft FEL of Sec 9										
15,856.39	90.00	89.51	6,204.70	-1,104.00	120.22	9,406.40	9,407.17	0.00	0.00	0.00
EOT TO 89.56° AZ										
15,857.96	90.00	89.56	6,204.70	-1,104.00	120.23	9,407.97	9,408.74	3.00	0.00	3.00
15,900.00	90.00	89.56	6,204.70	-1,104.00	120.55	9,450.01	9,450.78	0.00	0.00	0.00
16,000.00	90.00	89.56	6,204.70	-1,104.00	121.32	9,550.01	9,550.78	0.00	0.00	0.00
16,100.00	90.00	89.56	6,204.70	-1,104.00	122.09	9,650.01	9,650.78	0.00	0.00	0.00
BHL: 1799ft FNL & 300ft FEL of Sec 9										
16,156.11	90.00	89.56	6,204.70	-1,104.00	122.52	9,706.11	9,706.89	0.00	0.00	0.00

Formations

MD (usft)	TVD (usft)	Name	Lithology	Dip (°)	Dip Direction (°)
495.70	495.70	PIERRE SHALE (BASE OF FOX HI			
3,528.54	3,485.70	PARKMAN			
3,853.54	3,810.70	SUSSEX			
4,793.54	4,750.70	SHANNON			
6,239.91	6,109.70	SHARON SPRINGS SHALE			
6,388.36	6,174.70	NIOBRARA FORMATION			
6,422.75	6,184.70	NIOBRARA A CHALK			

Planning Report



Database:	EDM 5000.1 Single User Db	Local Co-ordinate Reference:	Well TIMBRO 9-59 8A-9-7
Company:	BISON OIL & GAS II, LLC	TVD Reference:	KB-EST @ 5100.70usft (Original Well Elev)
Project:	WELD COUNTY, COLORADO (NAD 83)	MD Reference:	KB-EST @ 5100.70usft (Original Well Elev)
Site:	SW NW SEC. 8 T9N R59W 6th P.M.	North Reference:	True
Well:	TIMBRO 9-59 8A-9-7	Survey Calculation Method:	Minimum Curvature
Wellbore:	ORIGINAL WELLBORE		
Design:	PROPOSAL #1		

Plan Annotations

MD (usft)	TVD (usft)	Local Coordinates		Comment
		+N/-S (usft)	+E/-W (usft)	
0.00	0.00	0.00	0.00	SHL: 1840ft FNL & 475ft FWL of Sec 8
700.00	700.00	0.00	0.00	START NUDGE (2°/100ft BUR)
1,300.00	1,295.62	5.17	-62.39	EOB TO 12° INC
2,859.99	2,821.52	31.94	-385.62	END OF TANGENT
3,459.99	3,417.14	37.11	-448.01	EOD TO VERTICAL
5,674.58	5,631.74	37.11	-448.01	KOP (10°/100ft BUR)
6,574.58	6,204.70	41.91	124.93	BPI: 1799ft FNL & 600ft FWL of Sec 8
15,856.39	6,204.70	120.22	9,406.40	EPI: 1801ft FNL & 600ft FEL of Sec 9
15,857.96	6,204.70	120.23	9,407.97	EOT TO 89.56° AZ
16,156.11	6,204.70	122.52	9,706.11	BHL: 1799ft FNL & 300ft FEL of Sec 9