

Photo#1:  
Overview of Location to North.



November 30, 2017



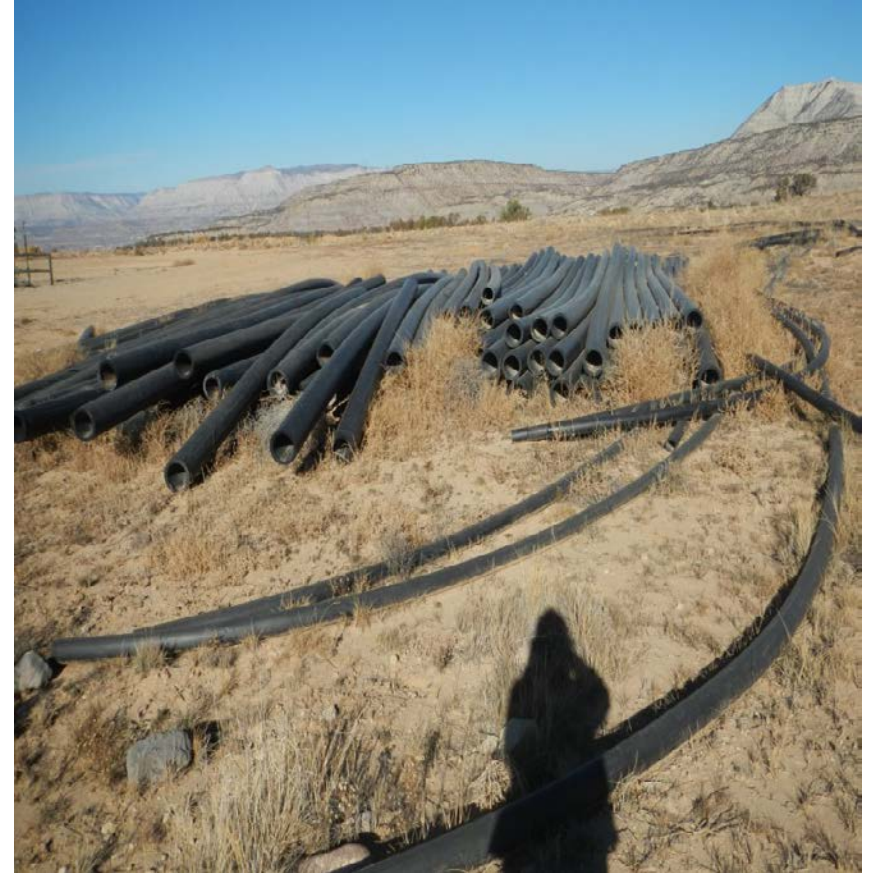
**COLORADO**  
Oil & Gas Conservation  
Commission  
Department of Natural Resources

Inspection Photos: Black Hills Federal Loc#312741

Photo#2:

Piles of Poly Pipe stored on East & West sides of Location. Note Weeds that have grown in Pipe Piles and have now become Debris.

Photo#3:



November 30, 2017



**COLORADO**  
Oil & Gas Conservation  
Commission  
Department of Natural Resources

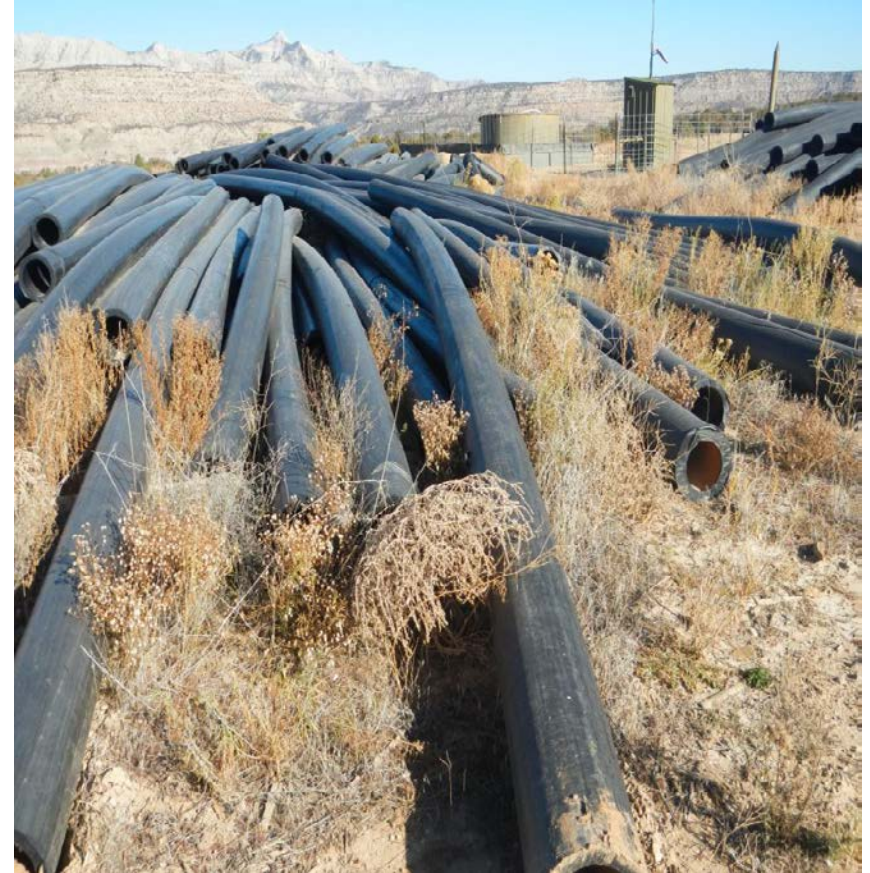
Inspection Photos: Black Hills Federal Loc#312741



Photo#4:

Piles of Poly Pipe stored on East & West sides of Location. Note Weeds that have grown in Pipe Piles and have now become Debris.

Photo#5:



November 30, 2017



**COLORADO**  
Oil & Gas Conservation  
Commission  
Department of Natural Resources

Inspection Photos: Black Hills Federal Loc#312741



Photo#6:

Noxious Weeds On Site; Knapweed & Thistle.

Photo#7:



November 30, 2017



Photo#8: Main BMP at center of N Pad Berm, flows North.

Photo#9: Point where SW discharges to Sediment Trap. BMP needs maintenance.

Arrows indicate Stormwater Flow & Sediment Migration.



November 30, 2017



**COLORADO**  
Oil & Gas Conservation  
Commission  
Department of Natural Resources

Inspection Photos: Black Hills Federal Loc#312741



Photo#10: Shows SW Flow from Photo#8 into  
Sediment Retention area.

Arrows indicate Stormwater Flow & Sediment Migration.



Photo#11: SW exits BMP below Photo#10; undercutting  
Rock Armor at Point Pen identifies hole.



November 30, 2017



**COLORADO**  
Oil & Gas Conservation  
Commission  
Department of Natural Resources

Inspection Photos: Black Hills Federal Loc#312741



Photo#12:

View of Drainage area at below Photos #10 & 11; where Sediment is migrating off Site.  
Arrows indicate Stormwater Flow & Sediment Migration.



November 30, 2017



**COLORADO**  
Oil & Gas Conservation  
Commission  
Department of Natural Resources

Inspection Photos: Black Hills Federal Loc#312741



Photo#13:

Rocked drain area to East that receives SW flow along base of Slope is being bypassed & sediment diverting to North & off Site. Arrows indicate Stormwater Flow & Sediment Migration.



Photo#14:



November 30, 2017