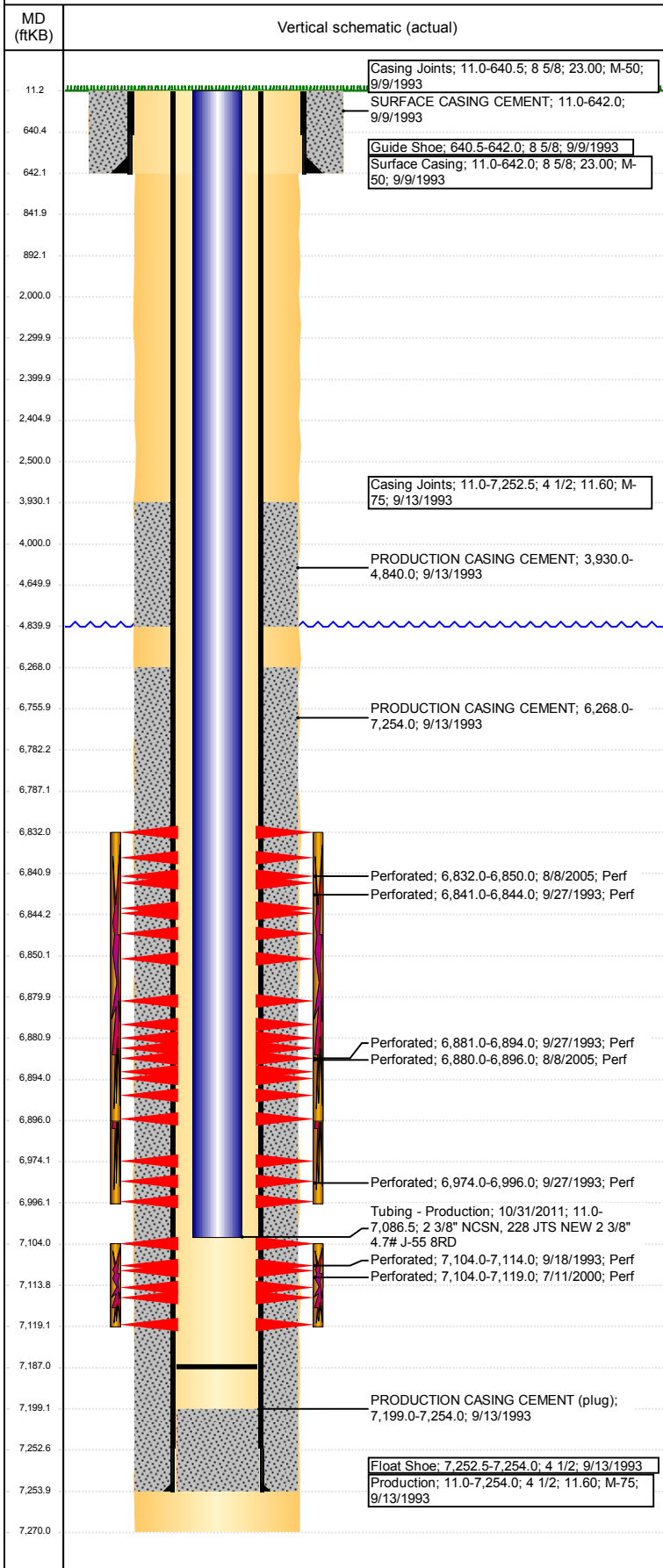


Wellbore Schematic Input Report

Well Name: UPRC 13-13J

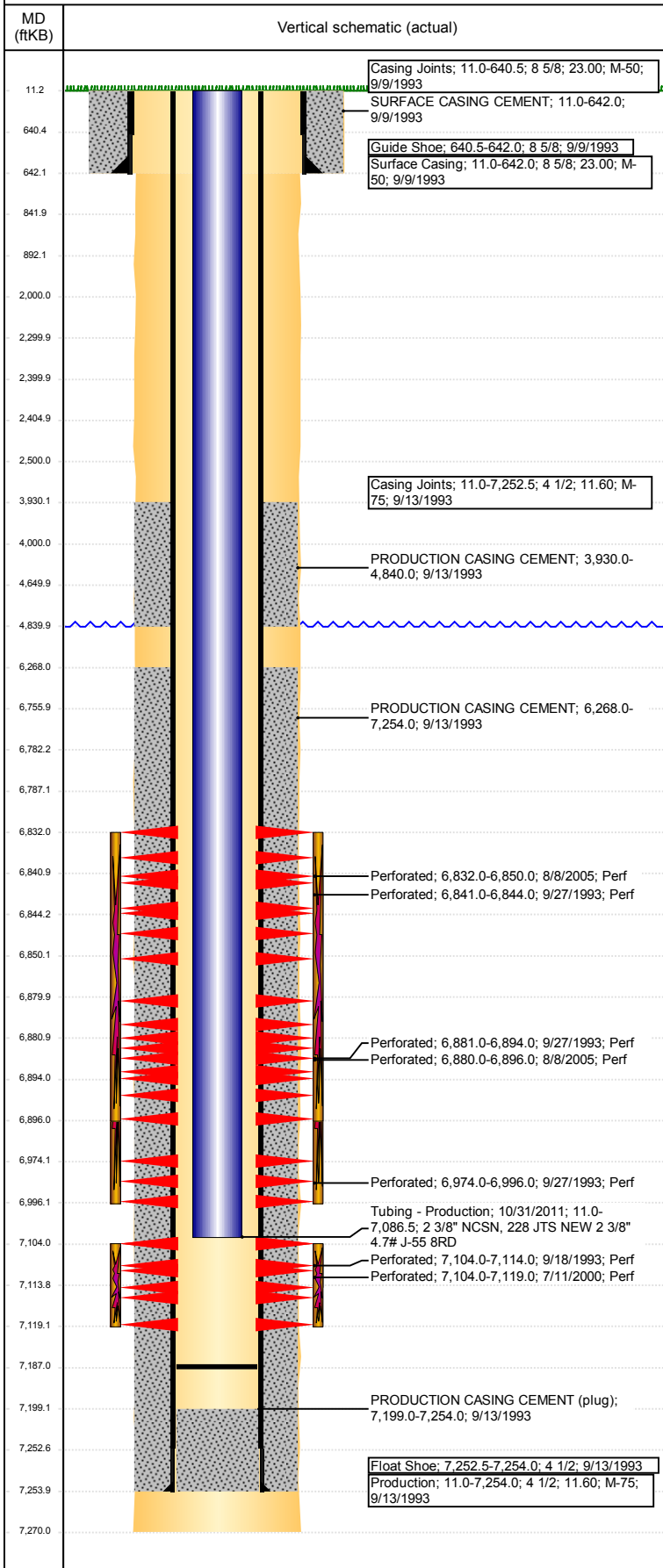
VERTICAL - ORIGINAL HOLE, 2/24/2018 5:42:30 PM



Well Header							
API 05-123-17087		Well Report Center 422121665			Well Configuration Type VERTICAL		
Original KB Elevation (ft) 4,858		KB - GL / MSL (ftKB) 11.00		Spud Date 9/9/1993		P & A Date	
Production Route Watt - C1-09			Well Production Status SI				SoRT Ignore No
Directions To Well WCR 47 & WCR 34 1/2: S. 1.4, E. 0.2, N. 0.1, W. INTO				Actual Latitude (°) 40.22026211		Actual Longitude (°) -104.61791975	
Comment							
Congressional Location							
Quarter 3 SW	Quarter 4 SW	Section 13	Township 3	Twnshp N/S Dir N	Range 65	Range E/W Dir W	
Rig Operator							
Rig Operator							
Plug Back Total Depths							
Date	Depth (ftKB)	Method			Com		
10/31/2011	7,187.0	TBG TALLY					
Wellbore Sections							
Section Des		Size (in)		Act Top, MD (ftKB)		Act Btm, MD (ftKB)	
SURFACE		12 1/4		11		642	
PRODUCTION		7 7/8		642		7,270	
Zone Statuses							
Zone Name		Status Date			Status		
NIOBRARA		10/27/2010			PR		
CODELL		11/1/2017			SI		
Casing Strings							
Surface Casing, 642.0ftKB							
Casing Description	Run Date	OD (in)	Wt/Len (l...	Grade	Top, MD (ft...	MD (ftKB)	
Surface Casing	9/9/1993	8 5/8	23.00	M-50	11.0	642.0	
Production, 7,254.0ftKB							
Casing Description	Run Date	OD (in)	Wt/Len (l...	Grade	Top, MD (ft...	MD (ftKB)	
Production	9/13/1993	4 1/2	11.60	M-75	11.0	7,254.0	
Cement							
Des		Start Date		Top (ftKB)		Btm (ftKB)	
SURFACE CASING CEMENT		9/9/1993		11.0		642.0	
PRODUCTION CASING CEMENT		9/13/1993		3,930.0		4,840.0	
PRODUCTION CASING CEMENT		9/13/1993		6,268.0		7,254.0	
Proposed Cement							
Des				Top (ftKB)		Btm (ftKB)	
Dump Bail				6,756.0		6,782.0	
Balance Plug				4,000.0		4,650.0	
Balance Plug				2,300.0		2,400.0	
Balance Plug				2,405.0		2,500.0	
Cement Squeeze				2,000.0		2,500.0	
Balance Plug				842.0		892.0	
Balance Plug				642.0		842.0	
Balance Plug				11.0		642.0	
Tubing Strings							
Tubing Description	Run Date	String...	ID (in)	Wt (lb/ft)	Grade	Len (ft)	Set De...
Tubing - Production	10/31/2011	2 3/8	2.00	4.70	J-55	7,075.48	
Tubing Components							
Item Des	OD (in)	Wt (lb/ft)	Grade	Jts	Len (ft)	Btm (ftKB)	Btm (TVD) (ftKB)
EUE 8rd Tubing	2 3/8	4.70	J-55	228	7,073.83	7,084.8	
Seating Nipple	2 3/8	5.40	J-55	1	1.20	7,086.0	
Notched collar	2 3/8		J-55	1	0.45	7,086.5	
Other In Hole							
Run Date	Des			OD (in)	Top (ftKB)	Btm (ftKB)	
Proposed Other In Hole							
Des			OD (in)	Top (ftKB)		Btm (ftKB)	
Cast Iron Bridge Plug			4	6,782.0		6,787.0	
Cement Retainer			4	2,400.0		2,405.0	

Well Name: UPRC 13-13J

VERTICAL - ORIGINAL HOLE, 2/24/2018 5:42:31 PM



Date	Type	Top, MD (ftKB)	Btm, MD (ftKB)
9/13/1993	COMPENSATED DENSITY	4,360.0	7,261.0
9/13/1993	INDUCTION	642.0	7,263.0
9/18/1993	CBL/CCL/GR	3,750.0	7,194.0
5/10/2011	GYRO	10.0	7,000.0

Linked Zone	Sum of Entered Shot Total	Top (ftKB)	Btm (ftKB)	Date
NIOBRARA, ORIGINAL HOLE	108	6,832.00	6,850.00	8/8/2005
NIOBRARA, ORIGINAL HOLE	4	6,841.00	6,844.00	9/27/1993
NIOBRARA, ORIGINAL HOLE	96	6,880.00	6,896.00	8/8/2005
NIOBRARA, ORIGINAL HOLE	12	6,881.00	6,894.00	9/27/1993
NIOBRARA, ORIGINAL HOLE	8	6,974.00	6,996.00	9/27/1993
CODELL, ORIGINAL HOLE	64	7,104.00	7,119.00	7/11/2000
CODELL, ORIGINAL HOLE	20	7,104.00	7,114.00	9/18/1993
Total (Sum)	312			

Linked Zone	Sum of Entered Shot Total	Top Depth (ftKB)	Btm (ftKB)	Date
CODELL, ORIGINAL HOLE	0	2,500.00	2,500.00	2/6/2018
Total (Sum)	0			

Supply Item Des	Type	Uni...	Job Category	Total...	Total...	Total...
-----------------	------	--------	--------------	----------	----------	----------