

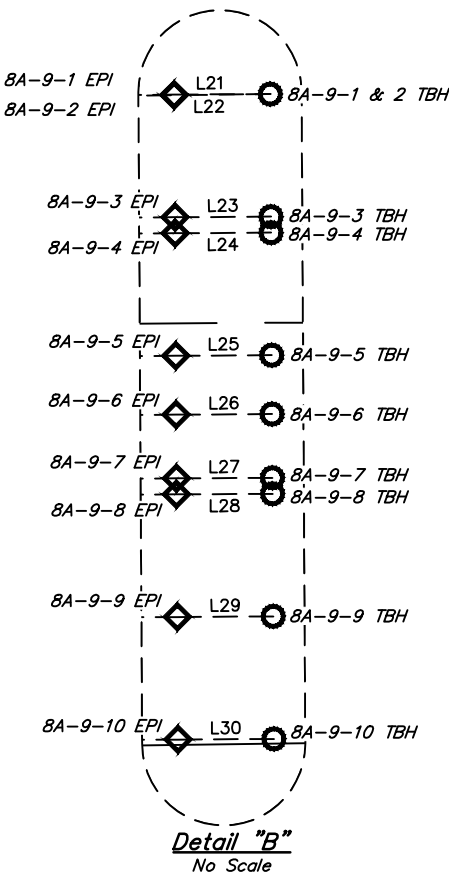
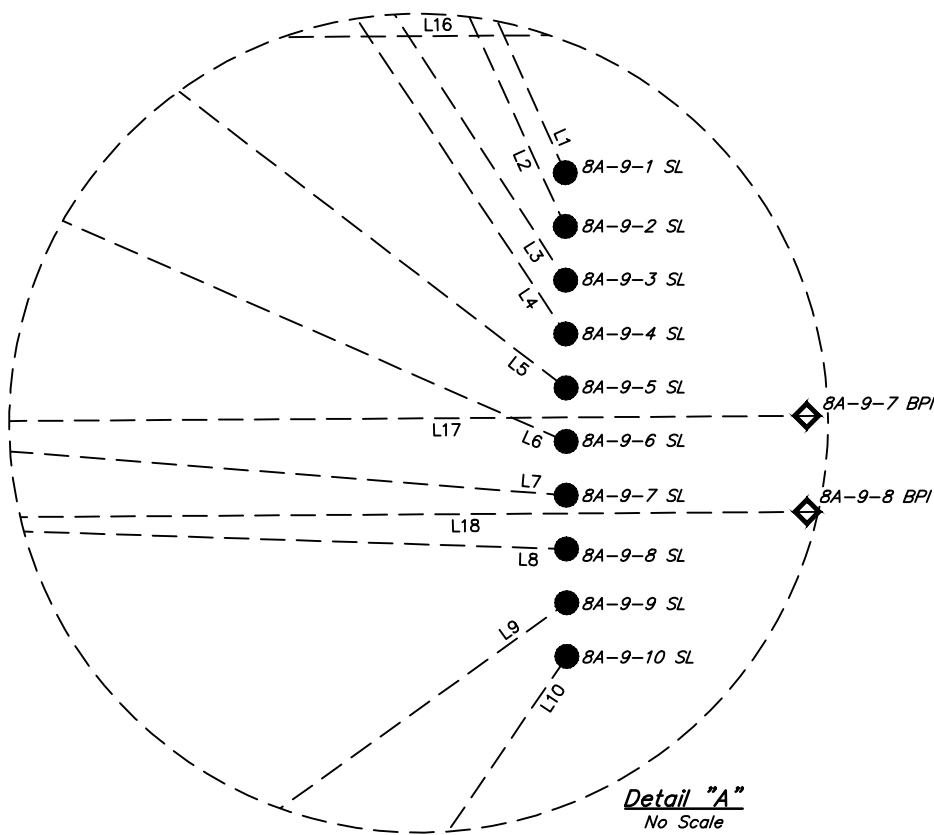
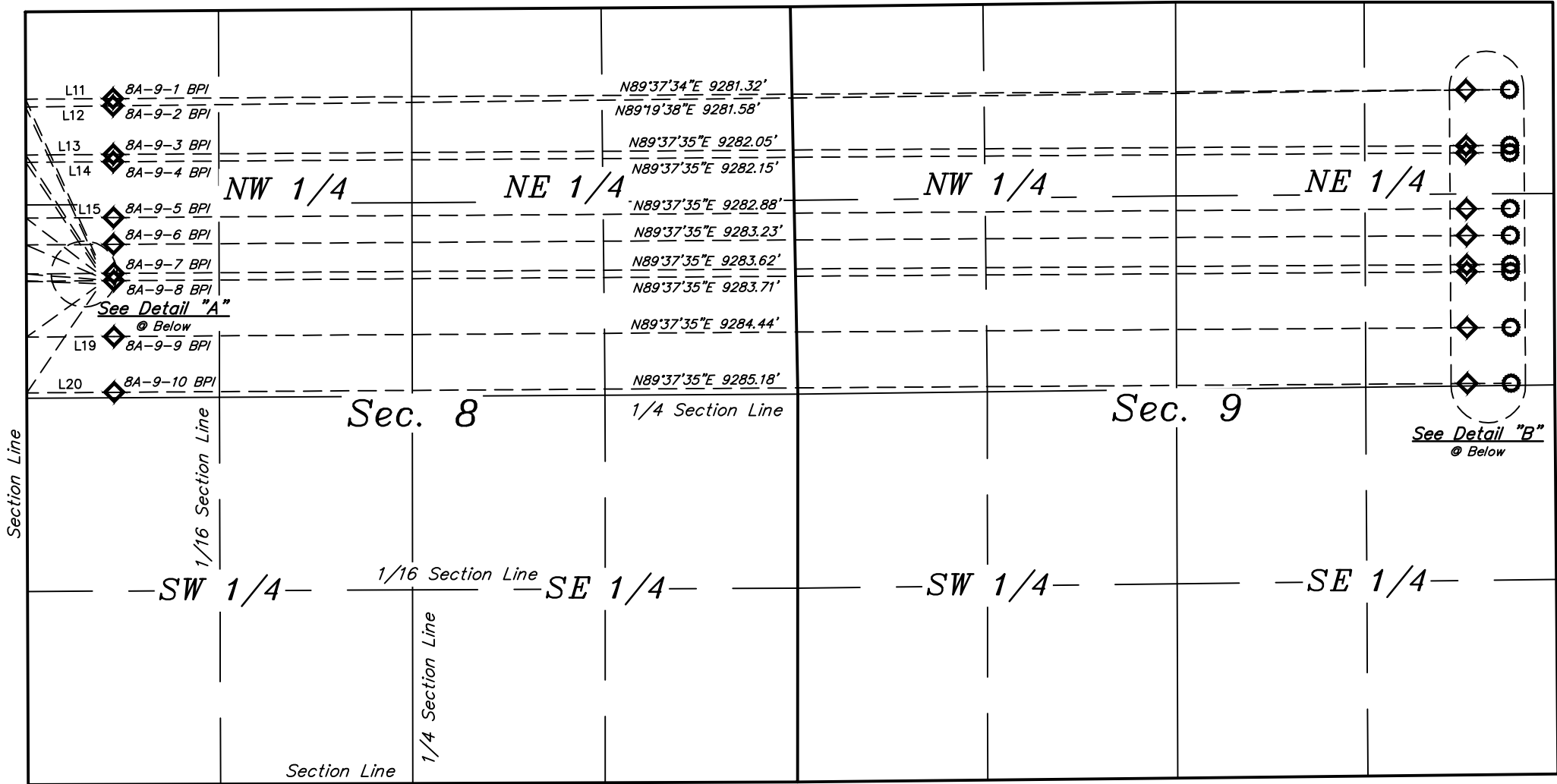


LEGEND:
● = PROPOSED WELLHEAD.
◇ = PRODUCTION INTERVAL.
○ = TARGET BOTTOM HOLE.



LINE TABLE		
LINE	DIRECTION	LENGTH
L1	N24°08'09"W	1170.84'
L2	N24°38'28"W	1147.90'
L3	N32°46'51"W	881.97'
L4	N33°33'51"W	863.40'
L5	N52°33'22"W	599.62'
L6	N66°19'15"W	519.17'
L7	N85°28'58"W	476.22'
L8	N88°08'13"W	474.92'
L9	S54°20'44"W	582.53'
L10	S34°11'40"W	839.75'
L11	N89°37'34"E	600.00'
L12	N89°19'38"E	600.02'
L13	N89°37'35"E	600.00'
L14	N89°37'35"E	600.00'
L15	N89°37'35"E	600.00'

LINE TABLE		
LINE	DIRECTION	LENGTH
L16	N89°37'35"E	600.00'
L17	N89°37'35"E	600.00'
L18	N89°37'35"E	600.00'
L19	N89°37'35"E	600.00'
L20	N89°37'35"E	600.00'
L21	N89°37'34"E	300.00'
L22	N89°19'38"E	300.01'
L23	N89°37'35"E	300.00'
L24	N89°37'35"E	300.00'
L25	N89°37'35"E	300.00'
L26	N89°37'35"E	300.00'
L27	N89°37'35"E	300.00'
L28	N89°37'35"E	300.00'
L29	N89°37'35"E	300.00'
L30	N89°37'35"E	300.00'



REV:1 02-08-18 C.IVIE (BPI & EPI CHANGE)

BISON OIL & GAS II

TIMBRO 9-59 8A PAD
SW 1/4 NW 1/4, SECTION 8, T9N, R59W, 6th P.M.
WELD COUNTY, COLORADO

SURVEYED BY	JONATHON BAYLIFF	01-04-18	SCALE
DRAWN BY	T.L.L.	01-31-18	1" = 1000'
MULTI-Well PLAN		FIGURE #5	



UELS, LLC
Corporate Office * 85 South 200 East
Vernal, UT 84078 * (435) 789-1017