

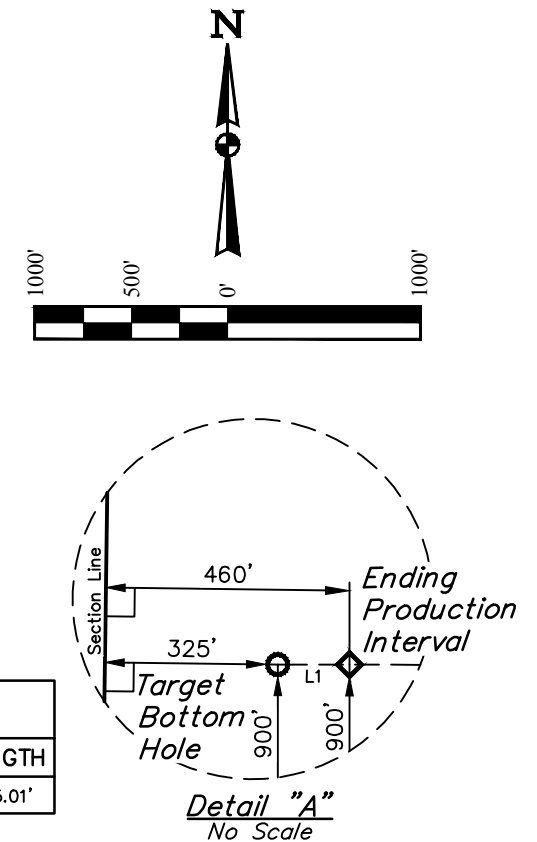
ConocoPhillips Company

COTTONWOOD CREEK #4-65 27-28 4BH
SW 1/4 SE 1/4, SECTION 27, T4S, R65W, 6th P.M.
ARAPAHOE COUNTY, COLORADO

BASIS OF BEARINGS
BASIS OF BEARINGS IS A G.P.S. OBSERVATION

BASIS OF ELEVATION

BENCHMARK 374 LOCATED ON THE SECTION LINE BETWEEN
SECTIONS 12 & 13, T5S, R64W, 6th. P.M., TAKEN FROM 1988
PUBLISHED DATUM BY THE UNITED STATES DEPARTMENT OF
THE INTERIOR, GEOLOGICAL SURVEY AS BEING 6054.61 FEET.



LINE TABLE		
LINE	DIRECTION	LENGTH
L1	N89°55'38"W	135.01'

CERTIFICATE OF REGISTRATION

THE ABOVE DEED WAS PREPARED FROM FIELD SURVEYS MADE BY ME OR UNDER MY SUPERVISION AND IS TRUE AND CORRECT TO THE BEST OF MY KNOWLEDGE.

[Signature]






REGISTERED LAND SURVEYOR
REGISTRATION NO. 28285
STATE OF OHIO

2025-14-18

PDOP = 1.3

REV: 3 02-14-18 C.IVIE (BPI CHANGE)

LEGEND:

-  = 90° SYMBOL
-  = PROPOSED WELLHEAD.
-  = PRODUCTION INTERVAL.
-  = TARGET BOTTOM HOLE.
-  = SECTION CORNERS LOCATED.

NAD 83 (SURFACE LOCATION)	NAD 83 (BEG. PROD. INTERVAL)	NAD 83 (ENDING PROD. INTERVAL)	NAD 83 (TARGET BOTTOM HOLE)
LATITUDE = 39°40'06.47" (39.668464)	LATITUDE = 39°40'11.49" (39.669858)	LATITUDE = 39°40'11.58" (39.669883)	LATITUDE = 39°40'11.58" (39.669883)
LONGITUDE = 104°38'45.42" (104.645950)	LONGITUDE = 104°38'35.21" (104.643115)	LONGITUDE = 104°40'37.20" (104.677000)	LONGITUDE = 104°40'38.93" (104.677481)
NAD 27 (SURFACE LOCATION)	NAD 27 (BEG. PROD. INTERVAL)	NAD 27 (ENDING PROD. INTERVAL)	NAD 27 (TARGET BOTTOM HOLE)
LATITUDE = 39°40'06.51" (39.668475)	LATITUDE = 39°40'11.53" (39.669870)	LATITUDE = 39°40'11.62" (39.669894)	LATITUDE = 39°40'11.62" (39.669894)
LONGITUDE = 104°38'43.54" (104.645428)	LONGITUDE = 104°38'33.32" (104.642590)	LONGITUDE = 104°40'35.31" (104.676475)	LONGITUDE = 104°40'37.04" (104.676956)
STATE PLANE NAD 83 (CO. CEN.)	STATE PLANE NAD 83 (CO. CEN.)	STATE PLANE NAD 83 (CO. CEN.)	STATE PLANE NAD 83 (CO. CEN.)
N: 1669496.60 E: 3240418.81	N: 1670011.95 E: 3241212.56	N: 1669933.02 E: 3231673.93	N: 1669933.02 E: 3231673.93
STATE PLANE NAD 27 (CO. CEN.)	STATE PLANE NAD 27 (CO. CEN.)	STATE PLANE NAD 27 (CO. CEN.)	STATE PLANE NAD 27 (CO. CEN.)
N: 669489.21 E: 2240572.68	N: 670004.56 E: 2241366.42	N: 669925.47 E: 2231827.86	N: 669924.16 E: 2231692.90



UELS, LLC
Corporate Office * 85 South 200 East
Vernal, UT 84078 * (435) 789-1017

SURVEYED BY	GREG WEIMER, C.T.	06-07-17	SCALE
DRAWN BY	K.B.	05-21-15	1" = 1000'

WELL LOCATION PLAT