

HALLIBURTON

iCem[®] Service

TERRA ENERGY PARTNERS

For: Terra

Date: Wednesday, January 10, 2018

PA 541-26 Surface PJR

API# 05-045-23651-00

Sincerely,

Grand Junction Cement Engineering

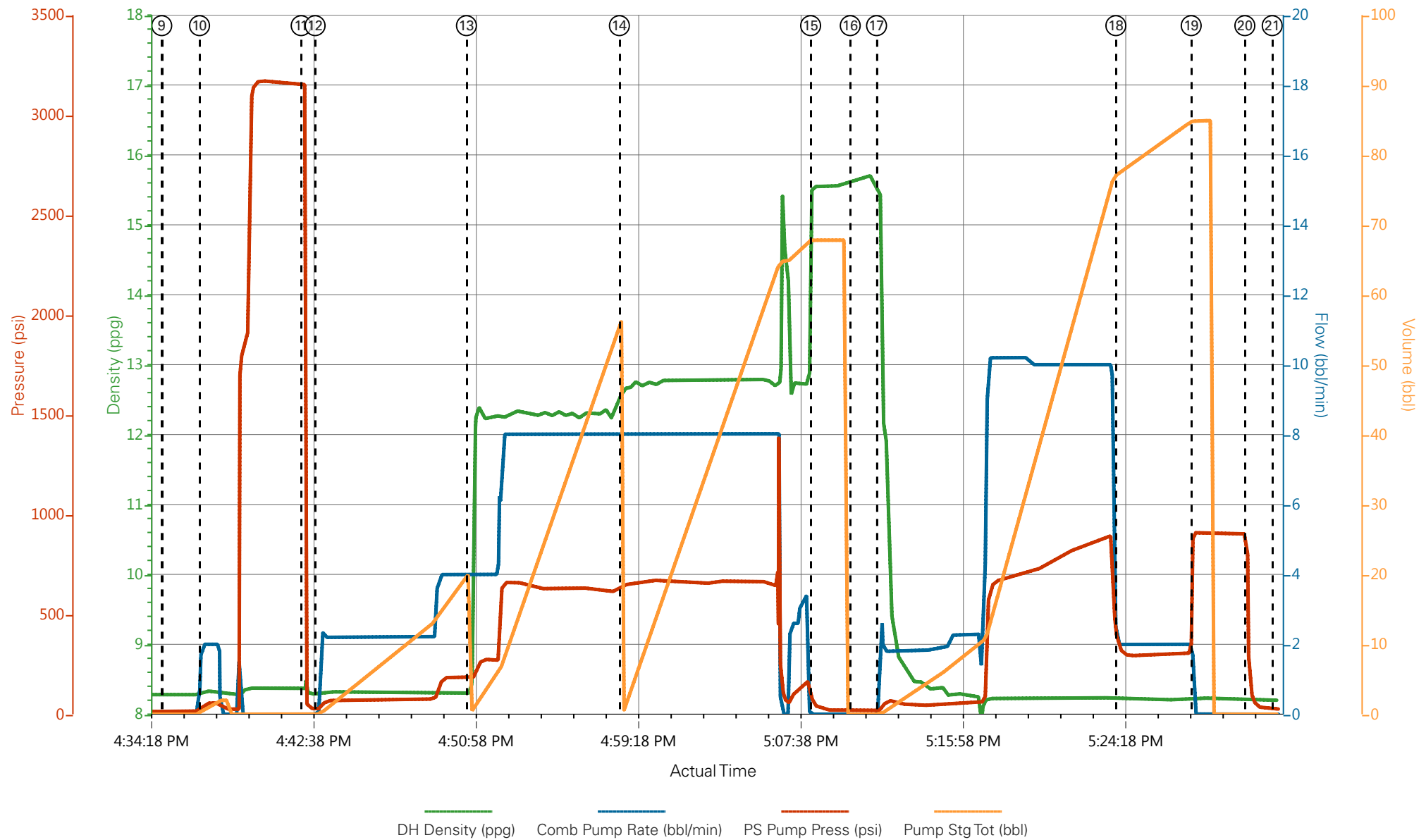
2.0 Real-Time Job Summary

2.1 Job Event Log

Type	Seq. No.	Graph Label	Date	Time	Source	DH Density (ppg)	Comb Pump Rate (bbl/min)	PS Pump Press (psi)	Pump Stg Tot (bbl)	Comments
Event	1	Call Out	01/10/2018	09:30:00	USER					REQUESTED ON LOCATION TIME 1400
Event	2	Pre-Convoy Safety Meeting	01/10/2018	12:00:00	USER					ALL HES EMPLOYEES
Event	3	Arrive At Loc	01/10/2018	13:00:00	USER					ARRIVED ON LOCATION 1 HOUR EARLY, RIG RUNNING CASING
Event	4	Meet With Company Rep	01/10/2018	13:05:00	USER					COMPANY REP OFFERED SDS / WATER TEST:
Event	5	Assessment Of Location Safety Meeting	01/10/2018	13:10:00	USER					ALL HES EMPLOYEES
Event	6	Pre-Rig Up Safety Meeting	01/10/2018	13:15:00	USER					ALL HES EMPLOYEES
Event	7	Rig-Up Equipment	01/10/2018	13:20:00	USER					1HT-400 PUMP TRUCK (ELITE#1) 1 660 BULK TRUCK 1 F-550 PICKUP
Event	8	Pre-Job Safety Meeting	01/10/2018	15:30:00	USER					ALL HES EMPLOYEES AND RIG CREW, RIG CIRCULATED @ 10BPM PRIOR TO THE JOB PRESSURE @ 110
Event	9	Start Job	01/10/2018	16:35:00	COM4					TD: 1155 TP: 1145..22 SJ: 44.74 CSG: 9 5/8 32.3# H-40 OH: 13 1/2 MUD WT: 9.5 PPG
Event	10	Prime Lines	01/10/2018	16:36:56	COM4	8.33	2.0	60	2.0	PRIME LINES WITH 2 BBLS FRESH WATER
Event	11	Test Lines	01/10/2018	16:42:09	COM4	8.33	0.0	3171	2.0	PRESSURE TEST OK
Event	12	Pump Fresh Water Spacer	01/10/2018	16:42:52	COM4	8.33	4.0	186	20	PUMP 20 BBL FRESH WATER SPACER

Event	13	Pump Lead Cement	01/10/2018	16:50:38	COM4	12.3	8.0	640	53	125 SKS 12.3 PPG 2.38 YIELD 13.77 GAL/SK LEAD CEMENT WEIGHT VERIFIED VIA PRESSURIZED MUD SCALES
Event	14	Pump Tail Cement	01/10/2018	16:58:29	COM4	12.8	8.0	670	65.8	175 SKS 12.8 PPG 2.11 YIELD 11.78 GAL/SK TAIL CEMENT WEIGHT VERIFIED VIA PRESSURIZED MUD SCALES PRESSURED UP AT THE END OF TAIL CEMENT AND HIT THE KICKOUTS ON THE PUMP TRUCK. OPERATOR RESET KICKOUTS AND RESUMED PUMPING WITH NO ISSUES
Event	15	Shutdown	01/10/2018	17:08:18	COM4					SHUTDOWN TO DROP TOP PLUG
Event	16	Drop Top Plug	01/10/2018	17:10:20	COM4					PLUG AWAY NO PROBLEMS, WASHED UP ON TOP OF THE PLUG
Event	17	Pump Displacement	01/10/2018	17:11:41	COM4	8.33	10.0	900	86.6	FRESH WATER DISPLACEMENT
Event	18	Slow Rate	01/10/2018	17:23:58	COM4	8.33	4.0	312	76	SLOW RATE TO BUMP PLUG
Event	19	Bump Plug	01/10/2018	17:27:50	COM4	8.33	2.0	903	86.6	PSI BEFORE BUMPING PLUG @ 312 BUMPED PLUG UP TO 903 PSI
Event	20	Check Floats	01/10/2018	17:30:35	USER					FLOATS HELD, 1/2 BBL BACK TO DISPLACEMENT TANKS
Event	21	End Job	01/10/2018	17:32:00	USER					GOOD RETURNS THROUGHOUT JOB, PIPE STATIC THROUGHOUT JOB. 24 BBLS OF CEMENT TO SURFACE
Event	22	Pre-Rig Down Safety Meeting	01/10/2018	17:35:00	USER					ALL HES EMPLOYEES
Event	23	Rig-Down Equipment	01/10/2018	17:45:00	USER					
Event	24	Pre-Convoy Safety Meeting	01/10/2018	18:45:00	USER					ALL HES EMPLOYEES
Event	25	Crew Leave Location	01/10/2018	19:00:00	USER					THANK YOU FOR USING HALLIBURTON CEMENT, DUSTIN SMITH AND CREW

TEP - PA 541-26 - 9 5/8 SURFACE



- | | | | | |
|---|-----------------------------|---------------------------|---------------------|--------------------------------|
| ① Call Out | ⑥ Pre-Rig Up Safety Meeting | ⑪ Test Lines | ⑯ Drop Top Plug | 21 End Job |
| ② Pre-Convoy Safety Meeting | ⑦ Rig-Up Equipment | ⑫ Pump Fresh Water Spacer | ⑰ Pump Displacement | 22 Pre-Rig Down Safety Meeting |
| ③ Arrive At Loc | ⑧ Pre-Job Safety Meeting | ⑬ Pump Lead Cement | ⑱ Slow Rate | 23 Rig-Down Equipment |
| ④ Meet With Company Rep | ⑨ Start Job | ⑭ Pump Tail Cement | ⑲ Bump Plug | 24 Pre-Convoy Safety Meeting |
| ⑤ Assessment Of Location Safety Meeting | ⑩ Prime Lines | ⑮ Shutdown | 20 Check Floats | 25 Crew Leave Location |

▼ **HALLIBURTON** | iCem® Service

Created: 2018-01-10 09:46:47, Version: 4.2.393

Edit

Customer : TERRA ENERGY PARTNERS-EBUS
Representative : CRAIG BORGSTEDE

Job Date : 1/10/2018 2:43:06 PM
Sales Order # : 0904559171

Well : PA 541-26
ELITE #1 : DUSTIN SMITH / WES GOWEN

TEP - PA 541-26 - 9 5/8 SURFACE

