

# VERDAD OIL & GAS CORPORATION

Location: COLORADO Slot: SLOT#08 HOMESTEAD 8 (2444'FSL & 1406'FEL, SEC.34)  
Field: WELD COUNTY (NAD83/TN) Well: HOMESTEAD 8  
Facility: SEC.34-T1N-R66W Wellbore: HOMESTEAD 8 PWB

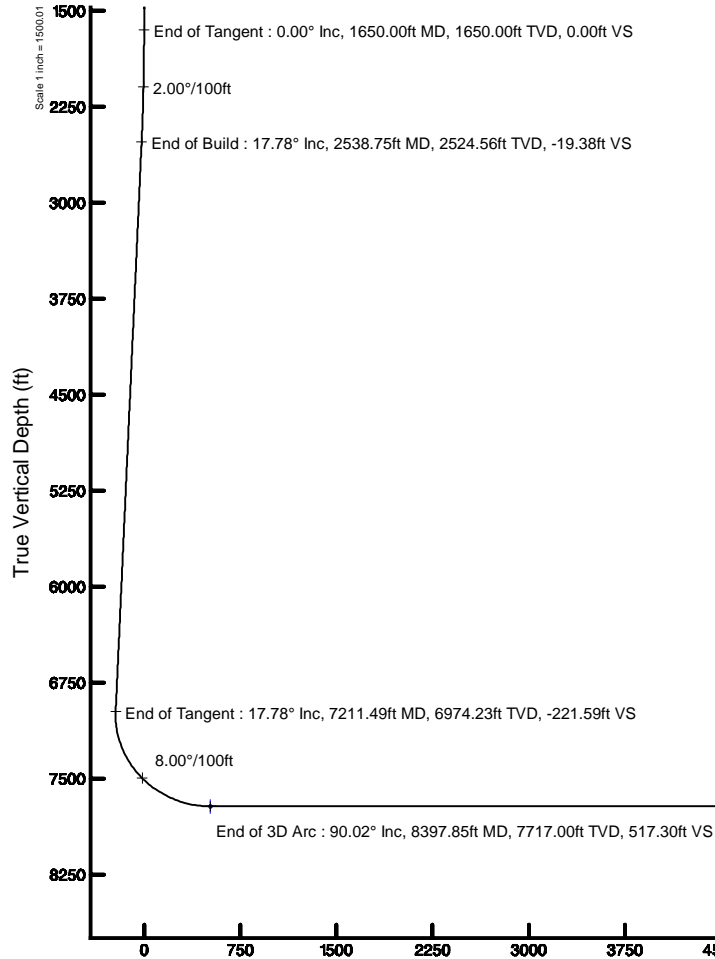
Plot reference wellpath is HOMESTEAD 8 (REV-A.0) PWP  
Grid System: NAD83 / Lambert Colorado SP, Northern Zone (501), US feet  
True vertical depths are referenced to XTREME 20 (16RXB+5137'GL) (RKB)  
Measured depths are referenced to XTREME 20 (16RXB+5137'GL) (RKB)  
XTREME 20 (16RXB+5137'GL) (RKB) to Mean Sea Level: 5153 feet  
Mean Sea Level to Mud line (At Slot: SLOT#08 HOMESTEAD 8 (2444'FSL & 1406'FEL, SEC.34)): 0 feet  
Coordinates are in feet referenced to Slot  
North Reference: True north  
Scale: True distance  
Depths are in feet  
Created by: guenaler on 2018-02-01  
Database: WA, DEN, Denver, Deln

## Location Information

Facility Name	Grid East (US ft)	Grid North (US ft)	Latitude	Longitude
SEC.34-T1N-R66W	3207958.837	1246340.128	40°00'25.920"N	104°45'27.396"W
Slot	Local N (ft)	Local E (ft)	Grid East (US ft)	Grid North (US ft)
SLOT#08 HOMESTEAD 8 (2444'FSL & 1406'FEL, SEC.34)	0.00	-355.77	3207958.837	1246340.128
XTREME 20 (16RXB+5137'GL) (RKB) to Mud line (At Slot: SLOT#08 HOMESTEAD 8 (2444'FSL & 1406'FEL, SEC.34))				5153ft
Mean Sea Level to Mud line (At Slot: SLOT#08 HOMESTEAD 8 (2444'FSL & 1406'FEL, SEC.34))				0ft
XTREME 20 (16RXB+5137'GL) (RKB) to Mean Sea Level				5153ft

## Bottom Hole Location

MD (ft)	Inc (")	Az (")	TVD (ft)	Local N (ft)	Local E (ft)	Grid East (US ft)	Grid North (US ft)	Latitude	Longitude
20350.23	90.024	180.273	7712.00	-12221.76	-1788.14	3205917.22	1234101.32	39°58'25.140"N	104°45'54.936"W



## Well Profile Data

Design Comment	MD (ft)	Inc (")	Az (")	TVD (ft)	Local N (ft)	Local E (ft)	DLS (ft/100ft)	VS (ft)
Tie On	16.00	0.000	286.473	16.00	0.00	0.00	0.00	0.00
End of Tangent	1650.00	0.000	286.473	1650.00	0.00	0.00	0.00	0.00
End of Build	2538.75	17.775	286.473	2524.56	38.78	-131.14	2.00	-19.38
End of Tangent	7211.49	17.775	286.473	6974.23	443.27	-1499.09	0.00	-221.59
End of 3D Arc	8397.85	90.024	180.273	7717.00	-269.51	-1731.25	8.00	517.30
End of Tangent	20350.23	90.024	180.273	7712.00	-12221.76	-1788.14	0.00	12351.87

## Targets

Name	MD (ft)	Inc (")	Az (")	TVD (ft)	Local N (ft)	Local E (ft)	DLS (ft/100ft)	VS (ft)
HOMESTEAD 1 SEC.34-T1N-R66W	-125	-354	-11025	3207958.837	1246340.128	40°00'25.920"N	104°45'27.396"W	
HOMESTEAD 1 SEC.10-T1S-R66W	-125	-354	-11025	3207958.837	1246340.128	40°00'25.920"N	104°45'27.396"W	
HOMESTEAD 1 SEC.3-T1S-R66W	-125	-354	-11025	3207958.837	1246340.128	40°00'25.920"N	104°45'27.396"W	
HOMESTEAD 1 SEC.3-T1S-R66W Hardline (460' Setback)	-125	-354	-11025	3207958.837	1246340.128	40°00'25.920"N	104°45'27.396"W	
HOMESTEAD 1 SEC.10-T1S-R66W Hardline (460' Setback)	-125	-354	-11025	3207958.837	1246340.128	40°00'25.920"N	104°45'27.396"W	
HOMESTEAD 1 SEC.3-T1S-R66W Hardline (460' Setback)	-125	-354	-11025	3207958.837	1246340.128	40°00'25.920"N	104°45'27.396"W	
HOMESTEAD 8 BHL ON PLAT, REV-1 (460'FSL & 1608'FWL, SEC.10)	20350.23	90.024	180.273	7712.00	-12221.76	-1788.14	0.00	12351.87
HOMESTEAD 8 PWB, REV-1 (2444'FSL & 1406'FEL, SEC.34)	8397.85	90.024	180.273	7717.00	-269.51	-1731.25	8.00	517.30



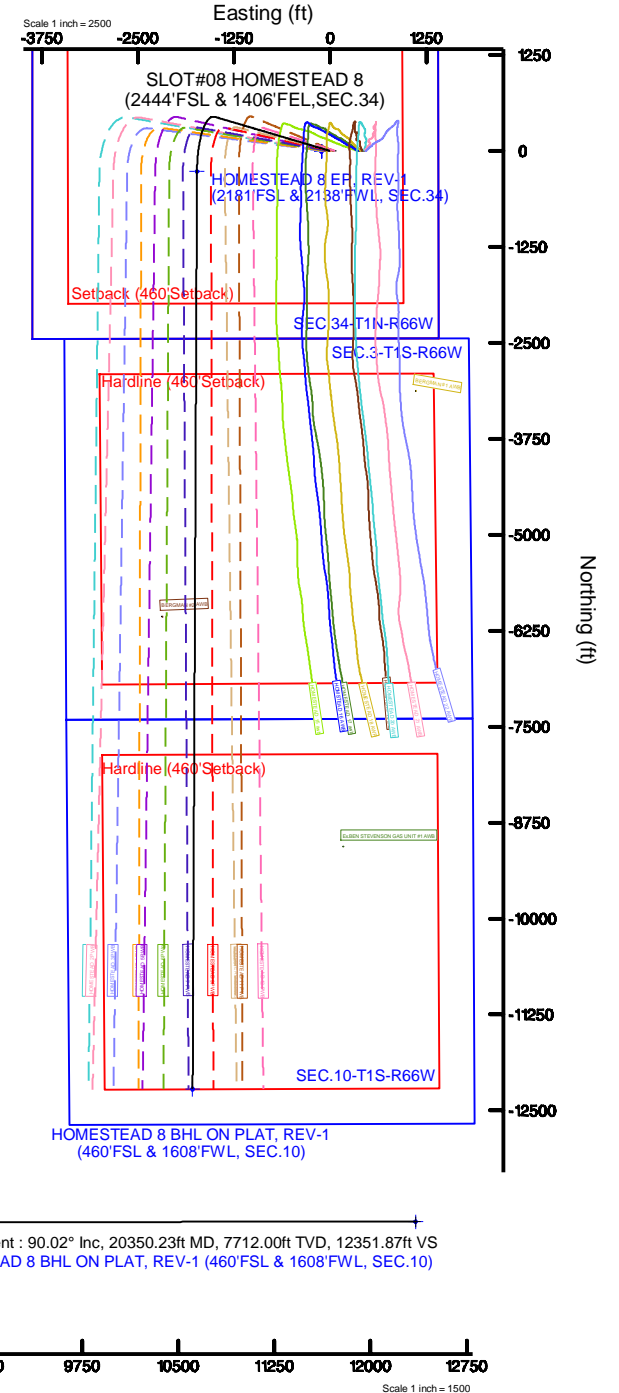
BGGM (1900.0 to 2019.0) Dip: 66.54° Field: 52093.4 nT  
Magnetic North is 8.30 degrees East of True North (at 1/25/2018)

To correct azimuth from Magnetic to True add 8.30 degrees



## Survey Program

Start MD (ft)	End MD (ft)	Tool	Model	Log Name/Comment	Wellbore
16.00	20350.23	BHI NavTrak	BHI NavTrak (Rotating-Axial Cor)		HOMESTEAD 8 PWB





# Planned Wellpath Report

HOMESTEAD 8 (REV-A.0) PWP

Page 1 of 9



REFERENCE WELLPATH IDENTIFICATION			
Operator	VERDAD OIL & GAS CORPORATION	Slot	SLOT#08 HOMESTEAD 8 (2444'FSL & 1406'FEL,SEC.34)
Area	COLORADO	Well	HOMESTEAD 8
Field	WELD COUNTY (NAD83/TN)	Wellbore	HOMESTEAD 8 PWB
Facility	SEC.34-T1N-R66W		

REPORT SETUP INFORMATION			
Projection System	NAD83 / Lambert Colorado SP, Northern Zone (501), US feet	Software System	WellArchitect® 5.0
North Reference	True	User	Guenaler
Scale	0.999966	Report Generated	2/1/2018 at 12:08:38 PM
Convergence at slot	0.48° East	Database/Source file	WA_DEN_Denver_Defn/HOMESTEAD_8__REV-A.0__PWP.xml

WELLPATH LOCATION						
	Local coordinates		Grid coordinates		Geographic coordinates	
	North[ft]	East[ft]	Easting[US ft]	Northing[US ft]	Latitude	Longitude
Slot Location	0.00	-355.77	3207603.09	1246337.15	40°00'25.920"N	104°45'31.968"W
Facility Reference Pt			3207958.84	1246340.13	40°00'25.920"N	104°45'27.396"W
Field Reference Pt			3242930.13	1254608.21	40°01'44.490"N	104°37'56.946"W

WELLPATH DATUM			
Calculation method	Minimum curvature	XTREME 20 (16'RKB+5137'GL) (RKB) to Facility Vertical Datum	5153.00ft
Horizontal Reference Pt	Slot	XTREME 20 (16'RKB+5137'GL) (RKB) to Mean Sea Level	5153.00ft
Vertical Reference Pt	XTREME 20 (16'RKB+5137'GL) (RKB)	XTREME 20 (16'RKB+5137'GL) (RKB) to Mud Line at Slot (SLOT#08 HOMESTEAD 8 (2444'FSL & 1406'FEL,SEC.34))	5153.00ft
MD Reference Pt	XTREME 20 (16'RKB+5137'GL) (RKB)	Section Origin	N 0.00, E 0.00 ft
Field Vertical Reference	Mean Sea Level	Section Azimuth	188.32°



# Planned Wellpath Report

HOMESTEAD 8 (REV-A.0) PWP

Page 2 of 9



REFERENCE WELLPATH IDENTIFICATION			
Operator	VERDAD OIL & GAS CORPORATION	Slot	SLOT#08 HOMESTEAD 8 (2444'FSL & 1406'FEL,SEC.34)
Area	COLORADO	Well	HOMESTEAD 8
Field	WELD COUNTY (NAD83/TN)	Wellbore	HOMESTEAD 8 PWB
Facility	SEC.34-T1N-R66W		

WELLPATH DATA (210 stations) † = interpolated/extrapolated station										
MD [ft]	Inclination [°]	Azimuth [°]	TVD [ft]	Vert Sect [ft]	North [ft]	East [ft]	Latitude	Longitude	DLS [°/100ft]	Comments
0.00†	0.000	286.473	0.00	0.00	0.00	0.00	40°00'25.920"N	104°45'31.968"W	0.00	
16.00	0.000	286.473	16.00	0.00	0.00	0.00	40°00'25.920"N	104°45'31.968"W	0.00	Tie On
116.00†	0.000	286.473	116.00	0.00	0.00	0.00	40°00'25.920"N	104°45'31.968"W	0.00	
216.00†	0.000	286.473	216.00	0.00	0.00	0.00	40°00'25.920"N	104°45'31.968"W	0.00	
316.00†	0.000	286.473	316.00	0.00	0.00	0.00	40°00'25.920"N	104°45'31.968"W	0.00	
416.00†	0.000	286.473	416.00	0.00	0.00	0.00	40°00'25.920"N	104°45'31.968"W	0.00	
516.00†	0.000	286.473	516.00	0.00	0.00	0.00	40°00'25.920"N	104°45'31.968"W	0.00	
616.00†	0.000	286.473	616.00	0.00	0.00	0.00	40°00'25.920"N	104°45'31.968"W	0.00	
716.00†	0.000	286.473	716.00	0.00	0.00	0.00	40°00'25.920"N	104°45'31.968"W	0.00	
816.00†	0.000	286.473	816.00	0.00	0.00	0.00	40°00'25.920"N	104°45'31.968"W	0.00	
916.00†	0.000	286.473	916.00	0.00	0.00	0.00	40°00'25.920"N	104°45'31.968"W	0.00	
1016.00†	0.000	286.473	1016.00	0.00	0.00	0.00	40°00'25.920"N	104°45'31.968"W	0.00	
1116.00†	0.000	286.473	1116.00	0.00	0.00	0.00	40°00'25.920"N	104°45'31.968"W	0.00	
1216.00†	0.000	286.473	1216.00	0.00	0.00	0.00	40°00'25.920"N	104°45'31.968"W	0.00	
1316.00†	0.000	286.473	1316.00	0.00	0.00	0.00	40°00'25.920"N	104°45'31.968"W	0.00	
1416.00†	0.000	286.473	1416.00	0.00	0.00	0.00	40°00'25.920"N	104°45'31.968"W	0.00	
1516.00†	0.000	286.473	1516.00	0.00	0.00	0.00	40°00'25.920"N	104°45'31.968"W	0.00	
1616.00†	0.000	286.473	1616.00	0.00	0.00	0.00	40°00'25.920"N	104°45'31.968"W	0.00	
1650.00	0.000	286.473	1650.00	0.00	0.00	0.00	40°00'25.920"N	104°45'31.968"W	0.00	End of Tangent
1716.00†	1.320	286.473	1715.99	-0.11	0.22	-0.73	40°00'25.922"N	104°45'31.977"W	2.00	
1816.00†	3.320	286.473	1815.91	-0.68	1.36	-4.61	40°00'25.933"N	104°45'32.027"W	2.00	
1916.00†	5.320	286.473	1915.62	-1.75	3.50	-11.83	40°00'25.955"N	104°45'32.120"W	2.00	
2016.00†	7.320	286.473	2015.01	-3.31	6.62	-22.39	40°00'25.985"N	104°45'32.256"W	2.00	
2116.00†	9.320	286.473	2113.95	-5.36	10.72	-36.27	40°00'26.026"N	104°45'32.434"W	2.00	
2216.00†	11.320	286.473	2212.32	-7.90	15.80	-53.44	40°00'26.076"N	104°45'32.655"W	2.00	
2316.00†	13.320	286.473	2310.02	-10.92	21.85	-73.90	40°00'26.136"N	104°45'32.918"W	2.00	
2416.00†	15.320	286.473	2406.91	-14.43	28.87	-97.62	40°00'26.205"N	104°45'33.223"W	2.00	
2516.00†	17.320	286.473	2502.87	-18.41	36.83	-124.57	40°00'26.284"N	104°45'33.569"W	2.00	
2538.75	17.775	286.473	2524.56	-19.38	38.78	-131.14	40°00'26.303"N	104°45'33.653"W	2.00	End of Build
2616.00†	17.775	286.473	2598.12	-22.73	45.47	-153.76	40°00'26.369"N	104°45'33.944"W	0.00	



# Planned Wellpath Report

HOMESTEAD 8 (REV-A.0) PWP

Page 3 of 9



REFERENCE WELLPATH IDENTIFICATION			
Operator	VERDAD OIL & GAS CORPORATION	Slot	SLOT#08 HOMESTEAD 8 (2444'FSL & 1406'FEL,SEC.34)
Area	COLORADO	Well	HOMESTEAD 8
Field	WELD COUNTY (NAD83/TN)	Wellbore	HOMESTEAD 8 PWB
Facility	SEC.34-T1N-R66W		

WELLPATH DATA (210 stations) † = interpolated/extrapolated station											
MD [ft]	Inclination [°]	Azimuth [°]	TVD [ft]	Vert Sect [ft]	North [ft]	East [ft]	Latitude	Longitude	DLS [°/100ft]	Comments	
2716.00†	17.775	286.473	2693.35	-27.05	54.12	-183.03	40°00'26.455"N	104°45'34.320"W	0.00		
2816.00†	17.775	286.473	2788.58	-31.38	62.78	-212.31	40°00'26.540"N	104°45'34.696"W	0.00		
2916.00†	17.775	286.473	2883.80	-35.71	71.44	-241.58	40°00'26.626"N	104°45'35.073"W	0.00		
3016.00†	17.775	286.473	2979.03	-40.04	80.09	-270.86	40°00'26.711"N	104°45'35.449"W	0.00		
3116.00†	17.775	286.473	3074.26	-44.36	88.75	-300.13	40°00'26.797"N	104°45'35.825"W	0.00		
3216.00†	17.775	286.473	3169.48	-48.69	97.40	-329.41	40°00'26.883"N	104°45'36.201"W	0.00		
3316.00†	17.775	286.473	3264.71	-53.02	106.06	-358.68	40°00'26.968"N	104°45'36.577"W	0.00		
3416.00†	17.775	286.473	3359.93	-57.35	114.72	-387.96	40°00'27.054"N	104°45'36.954"W	0.00		
3516.00†	17.775	286.473	3455.16	-61.67	123.37	-417.23	40°00'27.139"N	104°45'37.330"W	0.00		
3616.00†	17.775	286.473	3550.39	-66.00	132.03	-446.51	40°00'27.225"N	104°45'37.706"W	0.00		
3716.00†	17.775	286.473	3645.61	-70.33	140.69	-475.78	40°00'27.310"N	104°45'38.082"W	0.00		
3816.00†	17.775	286.473	3740.84	-74.65	149.34	-505.06	40°00'27.396"N	104°45'38.459"W	0.00		
3916.00†	17.775	286.473	3836.07	-78.98	158.00	-534.33	40°00'27.481"N	104°45'38.835"W	0.00		
4016.00†	17.775	286.473	3931.29	-83.31	166.66	-563.61	40°00'27.567"N	104°45'39.211"W	0.00		
4116.00†	17.775	286.473	4026.52	-87.64	175.31	-592.88	40°00'27.652"N	104°45'39.587"W	0.00		
4216.00†	17.775	286.473	4121.74	-91.96	183.97	-622.16	40°00'27.738"N	104°45'39.963"W	0.00		
4316.00†	17.775	286.473	4216.97	-96.29	192.63	-651.43	40°00'27.824"N	104°45'40.340"W	0.00		
4416.00†	17.775	286.473	4312.20	-100.62	201.28	-680.71	40°00'27.909"N	104°45'40.716"W	0.00		
4516.00†	17.775	286.473	4407.42	-104.95	209.94	-709.98	40°00'27.995"N	104°45'41.092"W	0.00		
4616.00†	17.775	286.473	4502.65	-109.27	218.59	-739.26	40°00'28.080"N	104°45'41.468"W	0.00		
4716.00†	17.775	286.473	4597.88	-113.60	227.25	-768.53	40°00'28.166"N	104°45'41.845"W	0.00		
4816.00†	17.775	286.473	4693.10	-117.93	235.91	-797.81	40°00'28.251"N	104°45'42.221"W	0.00		
4916.00†	17.775	286.473	4788.33	-122.25	244.56	-827.08	40°00'28.337"N	104°45'42.597"W	0.00		
5016.00†	17.775	286.473	4883.55	-126.58	253.22	-856.36	40°00'28.422"N	104°45'42.973"W	0.00		
5116.00†	17.775	286.473	4978.78	-130.91	261.88	-885.63	40°00'28.508"N	104°45'43.349"W	0.00		
5216.00†	17.775	286.473	5074.01	-135.24	270.53	-914.91	40°00'28.593"N	104°45'43.726"W	0.00		
5316.00†	17.775	286.473	5169.23	-139.56	279.19	-944.18	40°00'28.679"N	104°45'44.102"W	0.00		
5416.00†	17.775	286.473	5264.46	-143.89	287.85	-973.46	40°00'28.764"N	104°45'44.478"W	0.00		
5516.00†	17.775	286.473	5359.69	-148.22	296.50	-1002.73	40°00'28.850"N	104°45'44.854"W	0.00		
5616.00†	17.775	286.473	5454.91	-152.54	305.16	-1032.01	40°00'28.935"N	104°45'45.230"W	0.00		



Planned Wellpath Report

HOMESTEAD 8 (REV-A.0) PWP



REFERENCE WELLPATH IDENTIFICATION			
Operator	VERDAD OIL & GAS CORPORATION	Slot	SLOT#08 HOMESTEAD 8 (2444'FSL & 1406'FEL,SEC.34)
Area	COLORADO	Well	HOMESTEAD 8
Field	WELD COUNTY (NAD83/TN)	Wellbore	HOMESTEAD 8 PWB
Facility	SEC.34-T1N-R66W		

WELLPATH DATA (210 stations) † = interpolated/extrapolated station										
MD [ft]	Inclination [°]	Azimuth [°]	TVD [ft]	Vert Sect [ft]	North [ft]	East [ft]	Latitude	Longitude	DLS [°/100ft]	Comments
5716.00†	17.775	286.473	5550.14	-156.87	313.82	-1061.28	40°00'29.021"N	104°45'45.607"W	0.00	
5816.00†	17.775	286.473	5645.36	-161.20	322.47	-1090.56	40°00'29.107"N	104°45'45.983"W	0.00	
5916.00†	17.775	286.473	5740.59	-165.53	331.13	-1119.83	40°00'29.192"N	104°45'46.359"W	0.00	
6016.00†	17.775	286.473	5835.82	-169.85	339.79	-1149.11	40°00'29.278"N	104°45'46.735"W	0.00	
6116.00†	17.775	286.473	5931.04	-174.18	348.44	-1178.38	40°00'29.363"N	104°45'47.112"W	0.00	
6216.00†	17.775	286.473	6026.27	-178.51	357.10	-1207.66	40°00'29.449"N	104°45'47.488"W	0.00	
6316.00†	17.775	286.473	6121.50	-182.84	365.75	-1236.93	40°00'29.534"N	104°45'47.864"W	0.00	
6416.00†	17.775	286.473	6216.72	-187.16	374.41	-1266.21	40°00'29.620"N	104°45'48.240"W	0.00	
6516.00†	17.775	286.473	6311.95	-191.49	383.07	-1295.48	40°00'29.705"N	104°45'48.617"W	0.00	
6616.00†	17.775	286.473	6407.17	-195.82	391.72	-1324.76	40°00'29.791"N	104°45'48.993"W	0.00	
6716.00†	17.775	286.473	6502.40	-200.14	400.38	-1354.03	40°00'29.876"N	104°45'49.369"W	0.00	
6816.00†	17.775	286.473	6597.63	-204.47	409.04	-1383.31	40°00'29.962"N	104°45'49.745"W	0.00	
6916.00†	17.775	286.473	6692.85	-208.80	417.69	-1412.58	40°00'30.047"N	104°45'50.121"W	0.00	
7016.00†	17.775	286.473	6788.08	-213.13	426.35	-1441.86	40°00'30.133"N	104°45'50.498"W	0.00	
7116.00†	17.775	286.473	6883.31	-217.45	435.01	-1471.13	40°00'30.218"N	104°45'50.874"W	0.00	
7211.49	17.775	286.473	6974.23	-221.59	443.27	-1499.09	40°00'30.300"N	104°45'51.233"W	0.00	End of Tangent
7216.00†	17.682	285.327	6978.53	-221.77	443.65	-1500.41	40°00'30.304"N	104°45'51.250"W	8.00	
7316.00†	17.451	258.611	7074.03	-218.55	444.70	-1529.80	40°00'30.314"N	104°45'51.628"W	8.00	
7416.00†	20.508	235.672	7168.71	-201.60	431.84	-1559.02	40°00'30.187"N	104°45'52.003"W	8.00	
7516.00†	25.705	220.039	7260.74	-171.23	405.32	-1587.48	40°00'29.925"N	104°45'52.369"W	8.00	
7616.00†	32.014	209.780	7348.33	-128.05	365.64	-1614.64	40°00'29.533"N	104°45'52.718"W	8.00	
7716.00†	38.895	202.713	7429.77	-72.88	313.59	-1639.97	40°00'29.018"N	104°45'53.043"W	8.00	
7816.00†	46.090	197.520	7503.49	-6.80	250.18	-1662.97	40°00'28.392"N	104°45'53.339"W	8.00	
7916.00†	53.469	193.463	7568.03	68.90	176.64	-1683.20	40°00'27.665"N	104°45'53.599"W	8.00	
8016.00†	60.962	190.122	7622.15	152.74	94.40	-1700.27	40°00'26.852"N	104°45'53.818"W	8.00	
8116.00†	68.525	187.237	7664.79	243.10	5.06	-1713.83	40°00'25.969"N	104°45'53.992"W	8.00	
8216.00†	76.133	184.639	7695.13	338.22	-89.64	-1723.64	40°00'25.034"N	104°45'54.118"W	8.00	
8316.00†	83.767	182.207	7712.57	436.24	-187.85	-1729.48	40°00'24.063"N	104°45'54.193"W	8.00	
8397.85	90.024	180.273	7717.00 <sup>1</sup>	517.30	-269.51	-1731.25	40°00'23.256"N	104°45'54.216"W	8.00	End of 3D Arc
8416.00†	90.024	180.273	7716.99	535.27	-287.67	-1731.33	40°00'23.077"N	104°45'54.217"W	0.00	





# Planned Wellpath Report

HOMESTEAD 8 (REV-A.0) PWP

Page 5 of 9



REFERENCE WELLPATH IDENTIFICATION			
Operator	VERDAD OIL & GAS CORPORATION	Slot	SLOT#08 HOMESTEAD 8 (2444'FSL & 1406'FEL,SEC.34)
Area	COLORADO	Well	HOMESTEAD 8
Field	WELD COUNTY (NAD83/TN)	Wellbore	HOMESTEAD 8 PWB
Facility	SEC.34-T1N-R66W		

WELLPATH DATA (210 stations) † = interpolated/extrapolated station										
MD [ft]	Inclination [°]	Azimuth [°]	TVD [ft]	Vert Sect [ft]	North [ft]	East [ft]	Latitude	Longitude	DLS [°/100ft]	Comments
8516.00†	90.024	180.273	7716.95	634.29	-387.66	-1731.81	40°00'22.088"N	104°45'54.223"W	0.00	
8616.00†	90.024	180.273	7716.91	733.30	-487.66	-1732.29	40°00'21.100"N	104°45'54.229"W	0.00	
8716.00†	90.024	180.273	7716.87	832.32	-587.66	-1732.76	40°00'20.112"N	104°45'54.235"W	0.00	
8816.00†	90.024	180.273	7716.83	931.33	-687.66	-1733.24	40°00'19.124"N	104°45'54.241"W	0.00	
8916.00†	90.024	180.273	7716.78	1030.35	-787.66	-1733.71	40°00'18.135"N	104°45'54.247"W	0.00	
9016.00†	90.024	180.273	7716.74	1129.36	-887.66	-1734.19	40°00'17.147"N	104°45'54.253"W	0.00	
9116.00†	90.024	180.273	7716.70	1228.38	-987.66	-1734.67	40°00'16.159"N	104°45'54.259"W	0.00	
9216.00†	90.024	180.273	7716.66	1327.39	-1087.66	-1735.14	40°00'15.171"N	104°45'54.265"W	0.00	
9316.00†	90.024	180.273	7716.62	1426.40	-1187.66	-1735.62	40°00'14.183"N	104°45'54.271"W	0.00	
9416.00†	90.024	180.273	7716.57	1525.42	-1287.65	-1736.09	40°00'13.194"N	104°45'54.277"W	0.00	
9516.00†	90.024	180.273	7716.53	1624.43	-1387.65	-1736.57	40°00'12.206"N	104°45'54.283"W	0.00	
9616.00†	90.024	180.273	7716.49	1723.45	-1487.65	-1737.05	40°00'11.218"N	104°45'54.289"W	0.00	
9716.00†	90.024	180.273	7716.45	1822.46	-1587.65	-1737.52	40°00'10.230"N	104°45'54.295"W	0.00	
9816.00†	90.024	180.273	7716.41	1921.48	-1687.65	-1738.00	40°00'09.242"N	104°45'54.301"W	0.00	
9916.00†	90.024	180.273	7716.36	2020.49	-1787.65	-1738.47	40°00'08.253"N	104°45'54.307"W	0.00	
10016.00†	90.024	180.273	7716.32	2119.50	-1887.65	-1738.95	40°00'07.265"N	104°45'54.314"W	0.00	
10116.00†	90.024	180.273	7716.28	2218.52	-1987.65	-1739.43	40°00'06.277"N	104°45'54.320"W	0.00	
10216.00†	90.024	180.273	7716.24	2317.53	-2087.65	-1739.90	40°00'05.289"N	104°45'54.326"W	0.00	
10316.00†	90.024	180.273	7716.20	2416.55	-2187.64	-1740.38	40°00'04.300"N	104°45'54.332"W	0.00	
10416.00†	90.024	180.273	7716.16	2515.56	-2287.64	-1740.85	40°00'03.312"N	104°45'54.338"W	0.00	
10516.00†	90.024	180.273	7716.11	2614.58	-2387.64	-1741.33	40°00'02.324"N	104°45'54.344"W	0.00	
10616.00†	90.024	180.273	7716.07	2713.59	-2487.64	-1741.81	40°00'01.336"N	104°45'54.350"W	0.00	
10716.00†	90.024	180.273	7716.03	2812.60	-2587.64	-1742.28	40°00'00.348"N	104°45'54.356"W	0.00	
10816.00†	90.024	180.273	7715.99	2911.62	-2687.64	-1742.76	39°59'59.359"N	104°45'54.362"W	0.00	
10916.00†	90.024	180.273	7715.95	3010.63	-2787.64	-1743.23	39°59'58.371"N	104°45'54.368"W	0.00	
11016.00†	90.024	180.273	7715.90	3109.65	-2887.64	-1743.71	39°59'57.383"N	104°45'54.374"W	0.00	
11116.00†	90.024	180.273	7715.86	3208.66	-2987.64	-1744.18	39°59'56.395"N	104°45'54.380"W	0.00	
11216.00†	90.024	180.273	7715.82	3307.68	-3087.63	-1744.66	39°59'55.406"N	104°45'54.386"W	0.00	
11316.00†	90.024	180.273	7715.78	3406.69	-3187.63	-1745.14	39°59'54.418"N	104°45'54.392"W	0.00	
11416.00†	90.024	180.273	7715.74	3505.71	-3287.63	-1745.61	39°59'53.430"N	104°45'54.398"W	0.00	



Planned Wellpath Report

HOMESTEAD 8 (REV-A.0) PWP

Page 6 of 9



REFERENCE WELLPATH IDENTIFICATION			
Operator	VERDAD OIL & GAS CORPORATION	Slot	SLOT#08 HOMESTEAD 8 (2444'FSL & 1406'FEL,SEC.34)
Area	COLORADO	Well	HOMESTEAD 8
Field	WELD COUNTY (NAD83/TN)	Wellbore	HOMESTEAD 8 PWB
Facility	SEC.34-T1N-R66W		

WELLPATH DATA (210 stations) † = interpolated/extrapolated station										
MD [ft]	Inclination [°]	Azimuth [°]	TVD [ft]	Vert Sect [ft]	North [ft]	East [ft]	Latitude	Longitude	DLS [°/100ft]	Comments
11516.00†	90.024	180.273	7715.70	3604.72	-3387.63	-1746.09	39°59'52.442"N	104°45'54.404"W	0.00	
11616.00†	90.024	180.273	7715.65	3703.73	-3487.63	-1746.56	39°59'51.454"N	104°45'54.410"W	0.00	
11716.00†	90.024	180.273	7715.61	3802.75	-3587.63	-1747.04	39°59'50.465"N	104°45'54.416"W	0.00	
11816.00†	90.024	180.273	7715.57	3901.76	-3687.63	-1747.52	39°59'49.477"N	104°45'54.422"W	0.00	
11916.00†	90.024	180.273	7715.53	4000.78	-3787.63	-1747.99	39°59'48.489"N	104°45'54.428"W	0.00	
12016.00†	90.024	180.273	7715.49	4099.79	-3887.62	-1748.47	39°59'47.501"N	104°45'54.434"W	0.00	
12116.00†	90.024	180.273	7715.44	4198.81	-3987.62	-1748.94	39°59'46.512"N	104°45'54.440"W	0.00	
12216.00†	90.024	180.273	7715.40	4297.82	-4087.62	-1749.42	39°59'45.524"N	104°45'54.446"W	0.00	
12316.00†	90.024	180.273	7715.36	4396.83	-4187.62	-1749.90	39°59'44.536"N	104°45'54.452"W	0.00	
12416.00†	90.024	180.273	7715.32	4495.85	-4287.62	-1750.37	39°59'43.548"N	104°45'54.458"W	0.00	
12516.00†	90.024	180.273	7715.28	4594.86	-4387.62	-1750.85	39°59'42.560"N	104°45'54.464"W	0.00	
12616.00†	90.024	180.273	7715.24	4693.88	-4487.62	-1751.32	39°59'41.571"N	104°45'54.470"W	0.00	
12716.00†	90.024	180.273	7715.19	4792.89	-4587.62	-1751.80	39°59'40.583"N	104°45'54.476"W	0.00	
12816.00†	90.024	180.273	7715.15	4891.91	-4687.62	-1752.28	39°59'39.595"N	104°45'54.482"W	0.00	
12916.00†	90.024	180.273	7715.11	4990.92	-4787.61	-1752.75	39°59'38.607"N	104°45'54.488"W	0.00	
13016.00†	90.024	180.273	7715.07	5089.94	-4887.61	-1753.23	39°59'37.618"N	104°45'54.494"W	0.00	
13116.00†	90.024	180.273	7715.03	5188.95	-4987.61	-1753.70	39°59'36.630"N	104°45'54.500"W	0.00	
13216.00†	90.024	180.273	7714.98	5287.96	-5087.61	-1754.18	39°59'35.642"N	104°45'54.506"W	0.00	
13316.00†	90.024	180.273	7714.94	5386.98	-5187.61	-1754.66	39°59'34.654"N	104°45'54.512"W	0.00	
13416.00†	90.024	180.273	7714.90	5485.99	-5287.61	-1755.13	39°59'33.666"N	104°45'54.518"W	0.00	
13516.00†	90.024	180.273	7714.86	5585.01	-5387.61	-1755.61	39°59'32.677"N	104°45'54.524"W	0.00	
13616.00†	90.024	180.273	7714.82	5684.02	-5487.61	-1756.08	39°59'31.689"N	104°45'54.530"W	0.00	
13716.00†	90.024	180.273	7714.78	5783.04	-5587.61	-1756.56	39°59'30.701"N	104°45'54.536"W	0.00	
13816.00†	90.024	180.273	7714.73	5882.05	-5687.60	-1757.04	39°59'29.713"N	104°45'54.542"W	0.00	
13916.00†	90.024	180.273	7714.69	5981.06	-5787.60	-1757.51	39°59'28.724"N	104°45'54.548"W	0.00	
14016.00†	90.024	180.273	7714.65	6080.08	-5887.60	-1757.99	39°59'27.736"N	104°45'54.555"W	0.00	
14116.00†	90.024	180.273	7714.61	6179.09	-5987.60	-1758.46	39°59'26.748"N	104°45'54.561"W	0.00	
14216.00†	90.024	180.273	7714.57	6278.11	-6087.60	-1758.94	39°59'25.760"N	104°45'54.567"W	0.00	
14316.00†	90.024	180.273	7714.52	6377.12	-6187.60	-1759.42	39°59'24.772"N	104°45'54.573"W	0.00	
14416.00†	90.024	180.273	7714.48	6476.14	-6287.60	-1759.89	39°59'23.783"N	104°45'54.579"W	0.00	



Planned Wellpath Report

HOMESTEAD 8 (REV-A.0) PWP

Page 7 of 9



REFERENCE WELLPATH IDENTIFICATION			
Operator	VERDAD OIL & GAS CORPORATION	Slot	SLOT#08 HOMESTEAD 8 (2444'FSL & 1406'FEL,SEC.34)
Area	COLORADO	Well	HOMESTEAD 8
Field	WELD COUNTY (NAD83/TN)	Wellbore	HOMESTEAD 8 PWB
Facility	SEC.34-T1N-R66W		

WELLPATH DATA (210 stations) † = interpolated/extrapolated station										
MD [ft]	Inclination [°]	Azimuth [°]	TVD [ft]	Vert Sect [ft]	North [ft]	East [ft]	Latitude	Longitude	DLS [°/100ft]	Comments
14516.00†	90.024	180.273	7714.44	6575.15	-6387.60	-1760.37	39°59'22.795"N	104°45'54.585"W	0.00	
14616.00†	90.024	180.273	7714.40	6674.16	-6487.60	-1760.84	39°59'21.807"N	104°45'54.591"W	0.00	
14716.00†	90.024	180.273	7714.36	6773.18	-6587.59	-1761.32	39°59'20.819"N	104°45'54.597"W	0.00	
14816.00†	90.024	180.273	7714.32	6872.19	-6687.59	-1761.80	39°59'19.830"N	104°45'54.603"W	0.00	
14916.00†	90.024	180.273	7714.27	6971.21	-6787.59	-1762.27	39°59'18.842"N	104°45'54.609"W	0.00	
15016.00†	90.024	180.273	7714.23	7070.22	-6887.59	-1762.75	39°59'17.854"N	104°45'54.615"W	0.00	
15116.00†	90.024	180.273	7714.19	7169.24	-6987.59	-1763.22	39°59'16.866"N	104°45'54.621"W	0.00	
15216.00†	90.024	180.273	7714.15	7268.25	-7087.59	-1763.70	39°59'15.878"N	104°45'54.627"W	0.00	
15316.00†	90.024	180.273	7714.11	7367.27	-7187.59	-1764.17	39°59'14.889"N	104°45'54.633"W	0.00	
15416.00†	90.024	180.273	7714.06	7466.28	-7287.59	-1764.65	39°59'13.901"N	104°45'54.639"W	0.00	
15516.00†	90.024	180.273	7714.02	7565.29	-7387.59	-1765.13	39°59'12.913"N	104°45'54.645"W	0.00	
15616.00†	90.024	180.273	7713.98	7664.31	-7487.58	-1765.60	39°59'11.925"N	104°45'54.651"W	0.00	
15716.00†	90.024	180.273	7713.94	7763.32	-7587.58	-1766.08	39°59'10.936"N	104°45'54.657"W	0.00	
15816.00†	90.024	180.273	7713.90	7862.34	-7687.58	-1766.55	39°59'09.948"N	104°45'54.663"W	0.00	
15916.00†	90.024	180.273	7713.85	7961.35	-7787.58	-1767.03	39°59'08.960"N	104°45'54.669"W	0.00	
16016.00†	90.024	180.273	7713.81	8060.37	-7887.58	-1767.51	39°59'07.972"N	104°45'54.675"W	0.00	
16116.00†	90.024	180.273	7713.77	8159.38	-7987.58	-1767.98	39°59'06.984"N	104°45'54.681"W	0.00	
16216.00†	90.024	180.273	7713.73	8258.39	-8087.58	-1768.46	39°59'05.995"N	104°45'54.687"W	0.00	
16316.00†	90.024	180.273	7713.69	8357.41	-8187.58	-1768.93	39°59'05.007"N	104°45'54.693"W	0.00	
16416.00†	90.024	180.273	7713.65	8456.42	-8287.57	-1769.41	39°59'04.019"N	104°45'54.699"W	0.00	
16516.00†	90.024	180.273	7713.60	8555.44	-8387.57	-1769.89	39°59'03.031"N	104°45'54.705"W	0.00	
16616.00†	90.024	180.273	7713.56	8654.45	-8487.57	-1770.36	39°59'02.042"N	104°45'54.711"W	0.00	
16716.00†	90.024	180.273	7713.52	8753.47	-8587.57	-1770.84	39°59'01.054"N	104°45'54.717"W	0.00	
16816.00†	90.024	180.273	7713.48	8852.48	-8687.57	-1771.31	39°59'00.066"N	104°45'54.723"W	0.00	
16916.00†	90.024	180.273	7713.44	8951.50	-8787.57	-1771.79	39°58'59.078"N	104°45'54.729"W	0.00	
17016.00†	90.024	180.273	7713.39	9050.51	-8887.57	-1772.27	39°58'58.090"N	104°45'54.735"W	0.00	
17116.00†	90.024	180.273	7713.35	9149.52	-8987.57	-1772.74	39°58'57.101"N	104°45'54.741"W	0.00	
17216.00†	90.024	180.273	7713.31	9248.54	-9087.57	-1773.22	39°58'56.113"N	104°45'54.747"W	0.00	
17316.00†	90.024	180.273	7713.27	9347.55	-9187.56	-1773.69	39°58'55.125"N	104°45'54.753"W	0.00	
17416.00†	90.024	180.273	7713.23	9446.57	-9287.56	-1774.17	39°58'54.137"N	104°45'54.759"W	0.00	





TARGETS									
Name	MD [ft]	TVD [ft]	North [ft]	East [ft]	Grid East [US ft]	Grid North [US ft]	Latitude	Longitude	Shape
1) HOMESTEAD 8 EP, REV-1 (2181'FSL & 2138'FWL, SEC.34)	8397.85	7717.00	-269.51	-1731.25	3205874.22	1246053.19	40°00'23.256"N	104°45'54.216"W	point

SURVEY PROGRAM -   Ref Wellbore: HOMESTEAD 8 PWB   Ref Wellpath: HOMESTEAD 8 (REV-A.0) PWP									
Start MD [ft]	End MD [ft]	Positional Uncertainty Model				Log Name/Comment		Wellbore	
16.00	20350.23	BHI NaviTrak (Rotating+Axial Corr)						HOMESTEAD 8 PWB	



# Planned Wellpath Report

HOMESTEAD 8 (REV-A.0) PWP



REFERENCE WELLPATH IDENTIFICATION			
Operator	VERDAD OIL & GAS CORPORATION	Slot	SLOT#08 HOMESTEAD 8 (2444'FSL & 1406'FEL,SEC.34)
Area	COLORADO	Well	HOMESTEAD 8
Field	WELD COUNTY (NAD83/TN)	Wellbore	HOMESTEAD 8 PWB
Facility	SEC.34-T1N-R66W		

DESIGN COMMENTS				
MD [ft]	Inclination [°]	Azimuth [°]	TVD [ft]	Comment
16.00	0.000	286.473	16.00	Tie On
1650.00	0.000	286.473	1650.00	End of Tangent
2538.75	17.775	286.473	2524.56	End of Build
7211.49	17.775	286.473	6974.23	End of Tangent
8397.85	90.024	180.273	7717.00	End of 3D Arc
20350.23	90.024	180.273	7712.00	End of Tangent