

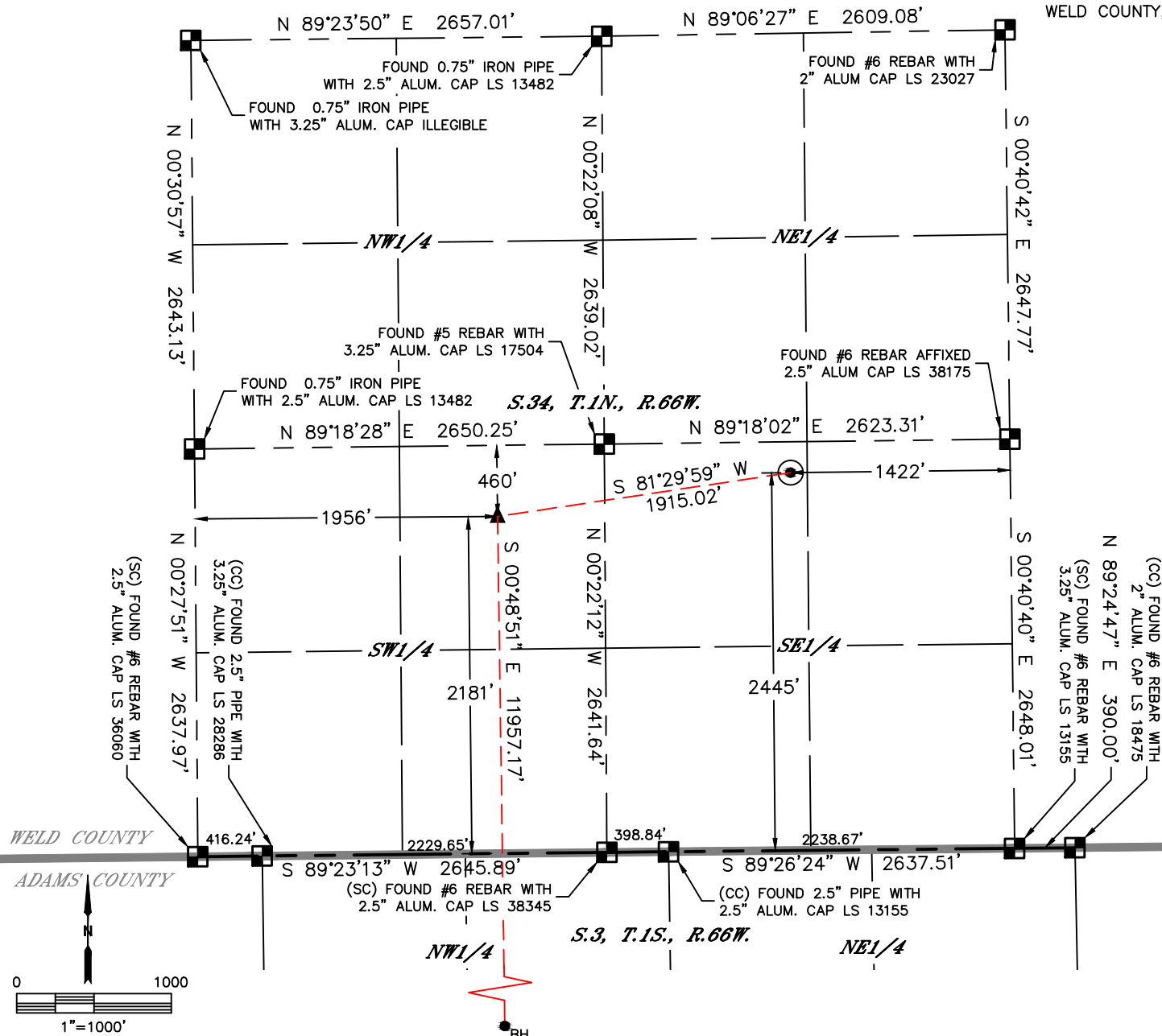


Lat40°, Inc. 6250 W. 10th Street, Unit 2, Greeley, CO 970-515-5294

WELL LOCATION CERTIFICATE

HOMESTEAD 7

SECTION: 34
TOWNSHIP: 1N
RANGE: 66W
6TH. P.M.
WELD COUNTY, CO



CLIENT: VERDAD RESOURCES						LANDMAN: DANNY SHOWERS			
INSTRUMENT OPERATOR: CHASE MILLER						SURVEY DATE: 7/24/2015		SURFACE USE: CROP LAND	
SHL FOOTAGE				SHL LAT°	SHL LONG°	SHL PDOP	SHL ELEV	SHL 1/4/1/4	SHL S-T-R
2445	FSL	1422	FEL	40.00720	-104.75894	1.6	5137	NWSE	34-1N-66

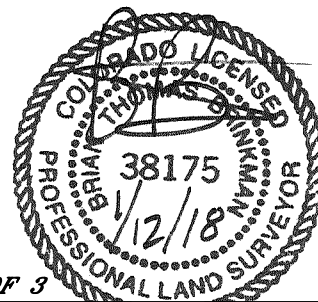
BHL FOOTAGE				BHL LAT °	BHL LONG °	BHL S-T-R	EP LAT °	EP LONG °	EP S-T-R
460	FSL	1553	FWL	39.97365	-104.76545	10-1S-66	40.00646	-104.76571	34-1N-66

LEGEND

- = ALIQUOT MONUMENT AS DESCRIBED
- = CALCULATED POSITION
- = SURFACE HOLE LOCATION (SHL)
- ▲ = ENTRY POINT LOCATION (EP)
- = BOTTOM HOLE LOCATION (BHL)
- ⊙ = EXISTING WELL
- ⊙ = ABANDONED WELL

NOTE:

- 1) Bearings shown are Grid Bearings of the Colorado State Plane Coordinate System, North Zone, North American Datum 1983. The lineal dimensions as contained herein are based upon the "U.S. Survey Foot."
- 2) Distances to section lines measured at 90 degrees from said section lines.
- 3) Ground elevations are based on an observed GPS elevation (NAVD 1988 DATUM).
- 4) Latitude and Longitude shown are (NAD 83 DATUM).
- 5) IMPROVEMENTS: See LOCATION DRAWING for all visible improvements within 500' of oil and gas location.
- 6) This map does not represent a boundary survey.



SHEET 1 OF 3

Brian T. Brinkman—On behalf of Lat40°, Inc.
Colorado Licensed Professional Land Surveyor No. 38175
DATE: 1/12/2018
PROJECT#: 2014230

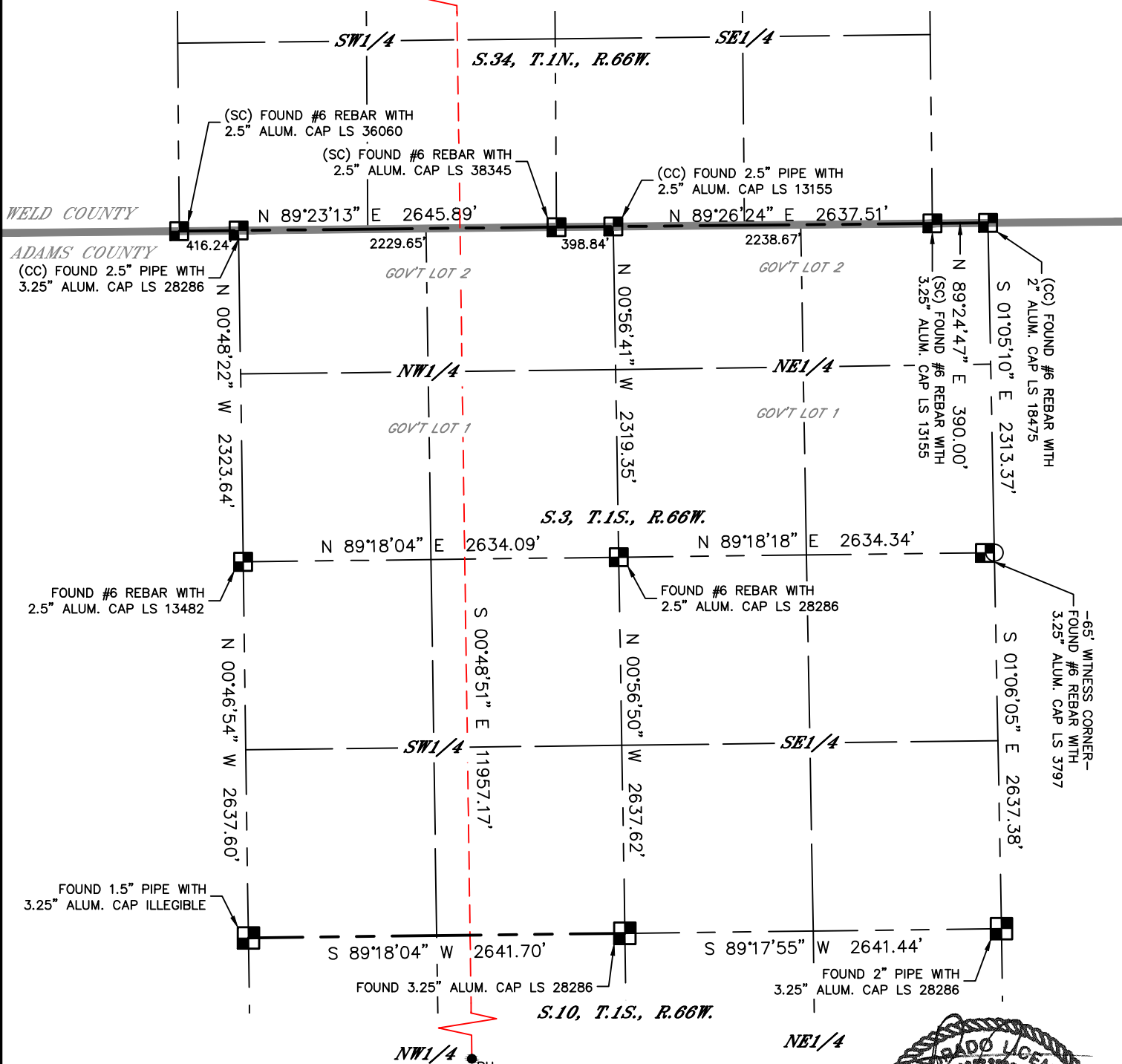


Lat40°, Inc. 6250 W. 10th Street, Unit 2, Greeley, CO 970-515-5294

WELL LOCATION CERTIFICATE

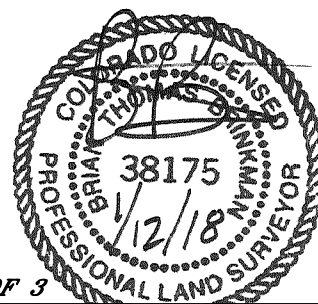
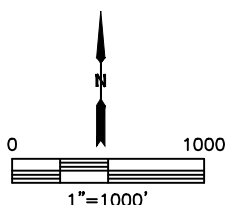
HOMESTEAD 7

SECTION: 34
TOWNSHIP: 1N
RANGE: 66W
6TH. P.M.
WELD COUNTY, CO



LEGEND

- = ALIQUOT MONUMENT AS DESCRIBED
- = CALCULATED POSITION
- = SURFACE HOLE LOCATION (SHL)
- ▲ = ENTRY POINT LOCATION (EP)
- = BOTTOM HOLE LOCATION (BHL)
- ⊙ = EXISTING WELL
- ⊙ = ABANDONED WELL



SHEET 2 OF 3

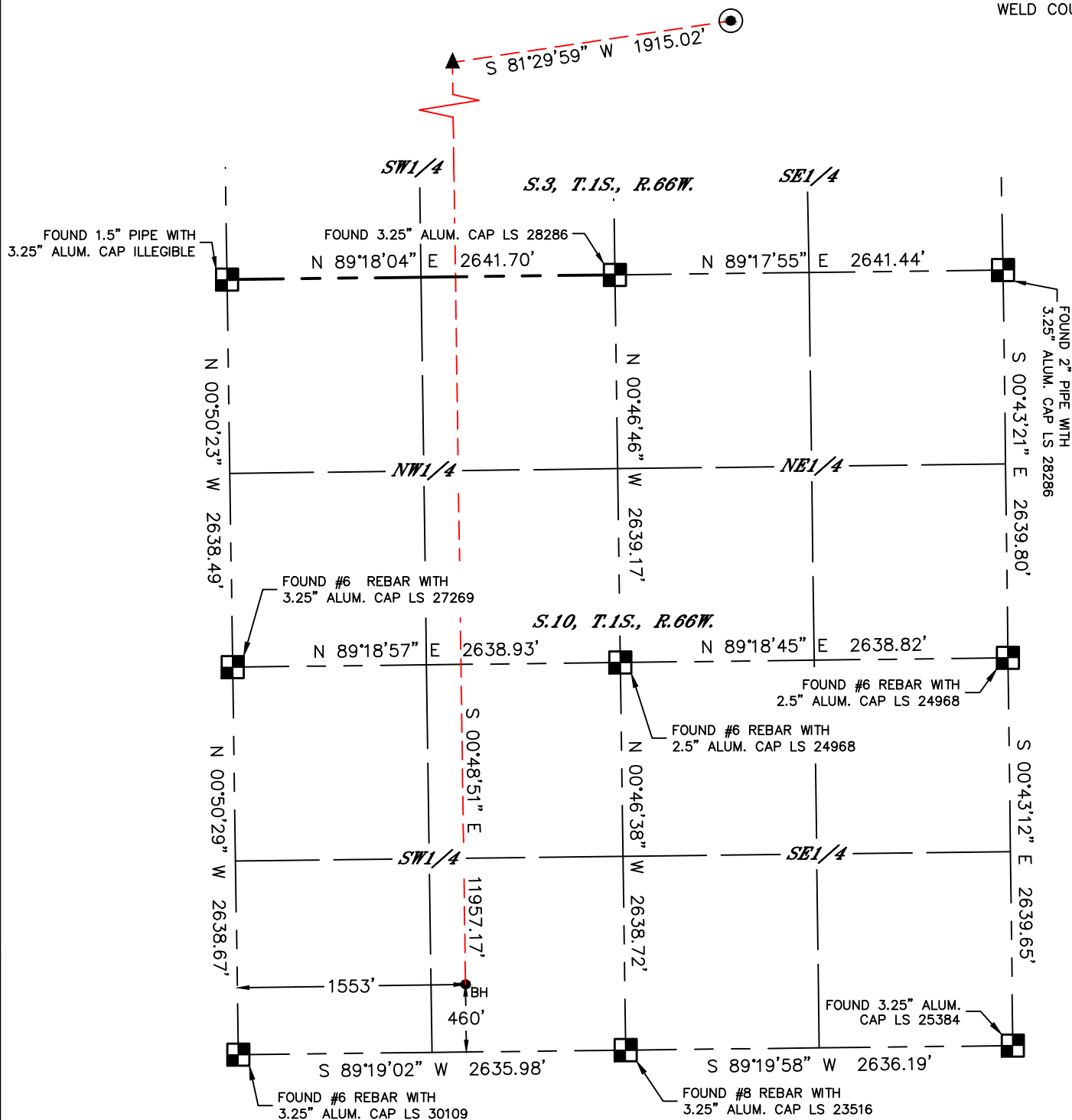
Brian T. Brinkman—On behalf of Lat40°, Inc.
Colorado Licensed Professional Land Surveyor No. 38175
DATE: 1/12/2018
PROJECT#: 2014230

Lat40°, Inc. 6250 W. 10th Street, Unit 2, Greeley, CO 970-515-5294








WELL LOCATION CERTIFICATE

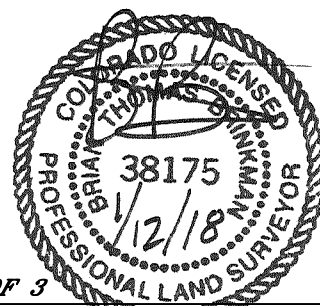
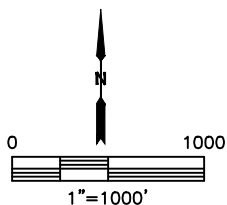
HOMESTEAD 7

SECTION: 34
TOWNSHIP: 1N
RANGE: 66W
6TH. P.M.
WELD COUNTY, CO



LEGEND

-  = ALIQUOT MONUMENT AS DESCRIBED
 = CALCULATED POSITION
 = SURFACE HOLE LOCATION (SHL)
 = ENTRY POINT LOCATION (EP)
 = BOTTOM HOLE LOCATION (BHL)
 = EXISTING WELL
 = ABANDONED WELL



SHEET 3 OF 3

Brian T. Brinkman—On behalf of L&L, Inc.
Colorado Licensed Professional Land Surveyor No. 38175
DATE: 1/12/2018
PROJECT#: 2014230

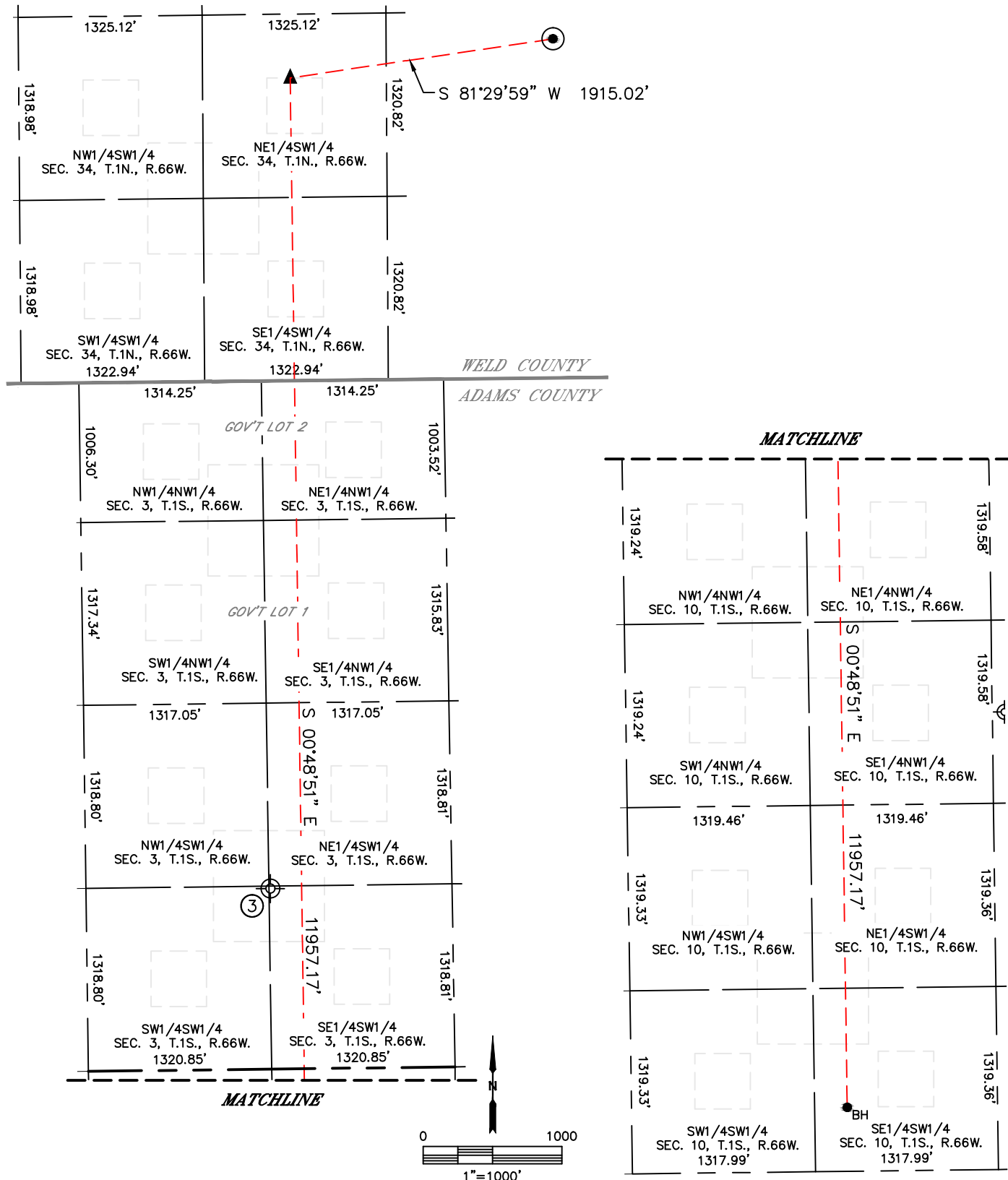


Lat40°, Inc. 6250 W. 10th Street, Unit 2, Greeley, CO 970-515-5294

SITE SKETCH

HOMESTEAD 7

SECTION: 34
TOWNSHIP: 1N
RANGE: 66W
6TH. P.M.
WELD COUNTY, CO



WELL NO.	WELL NAME	SHL FOOTAGE				SHL LAT°	SHL LONG°	PDOP	ELEV (FT.)	1/4/1/4
3	BERGMAN 2	1300	FSL	1325	FWL	39.99055	104.76668	NA	5133	SESW

DATE: 1/12/2018
PROJECT#: 2014230