

# HALLIBURTON

iCem<sup>®</sup> Service

## **TEP ROCKY MOUNTAIN LLC-EBUS**

**For: Terra**

Date: Sunday, December 24, 2017

**PA 521-25 Surface**

API# 05-045-23648

Sincerely,

**Grand Junction Cement Engineering**

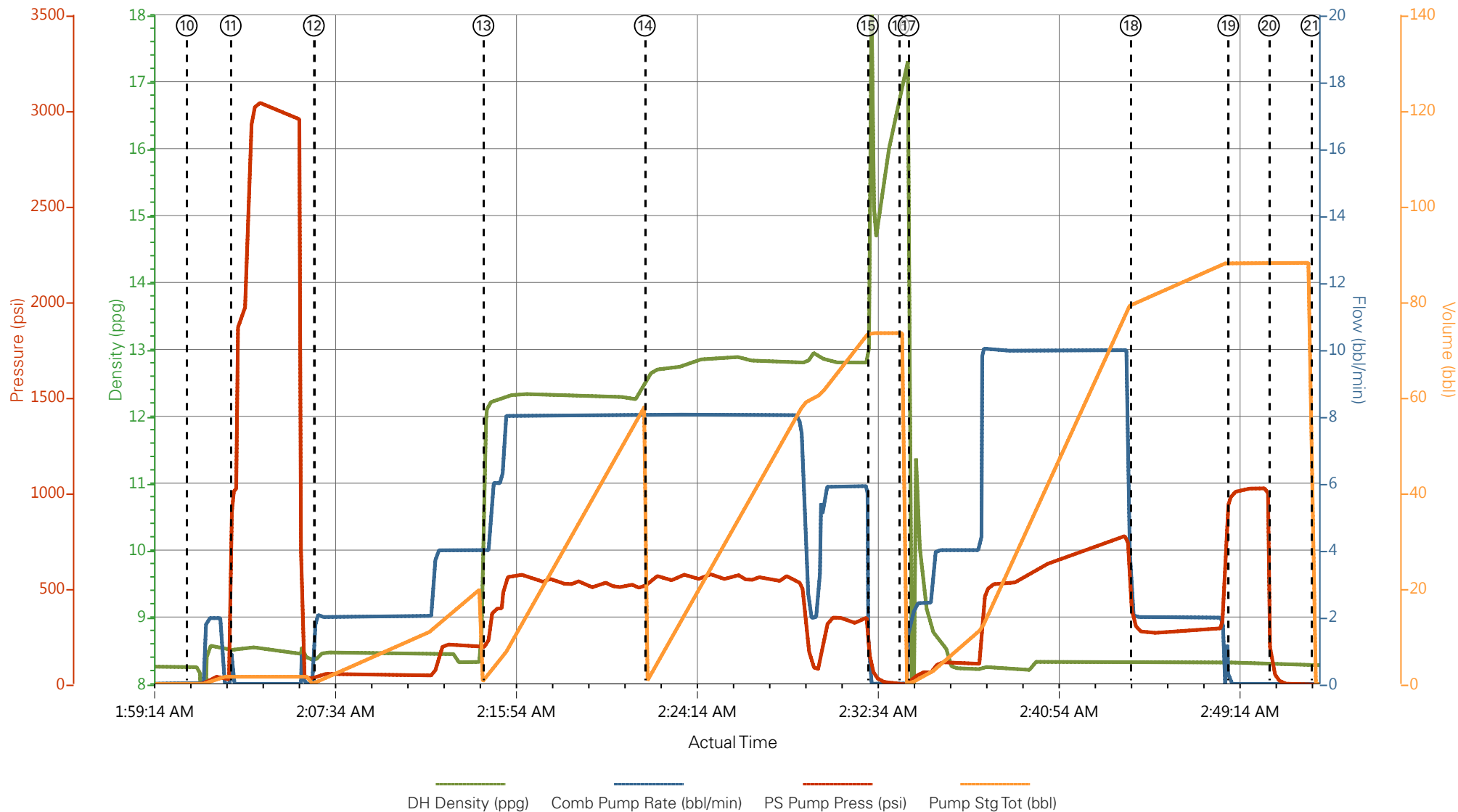
## 2.0 Real-Time Job Summary

## 2.1 Job Event Log

Type	Seq. No.	Graph Label	Date	Time	Source	DH Density (ppg)	Comb Pump Rate (bbl/min)	PS Pump Press (psi)	Pump Stg Tot (bbl)	Comments
Event	1	Call Out	12/23/2017	18:00:00	USER					
Event	2	Pre-Convoy Safety Meeting	12/23/2017	23:15:00	USER					
Event	3	Crew Leave Yard	12/23/2017	23:20:00	USER					CREW WAS WAITING IN FIELD FOR JOB TO CALLOUT.
Event	4	Arrive At Loc	12/23/2017	23:30:00	USER					ARRIVED ON LOCATION 30 MIN PRIOR TO REQUESTED ON LOC TIME OF MIDNIGHT 12/24/17
Event	5	Assessment Of Location Safety Meeting	12/23/2017	23:35:00	USER					
Event	6	Spot Equipment	12/23/2017	23:45:00	USER					
Event	7	Pre-Rig Up Safety Meeting	12/23/2017	23:55:00	USER					
Event	8	Rig-Up Equipment	12/24/2017	00:00:00	USER					
Event	9	Pre-Job Safety Meeting	12/24/2017	01:30:00	USER					
Event	10	Start Job	12/24/2017	02:00:53	COM5					TD: 1130 TP: 1124 SJ: 44.33 MW: 9.0 PPG 9 5/8" 32.3#/FT CSG IN 13 1/2" OH WATER TEST: PH: 7 POTASSIUM: 450 CHLORIDES: 0 SULFATES: <200 TEMP: 68 DEGREES
Event	11	Test Lines	12/24/2017	02:02:55	COM5	8.33	0.00	3000.00	2.0	3000 PSI TEST
Event	12	Pump Spacer 1	12/24/2017	02:06:44	COM5	8.33	4.00	130.00	20.0	FRESH H2O SPACER
Event	13	Pump Lead Cement	12/24/2017	02:14:33	COM5	12.30	8.00	540.00	53.0	125 SKS @ 12.3 PPG 2.38 YLD 13.77 GAL/SK H2O
Event	14	Pump Tail Cement	12/24/2017	02:21:59	COM5	12.60	8.10	519.00	65.8	175 SKS @ 12.8 PPG 2.11 YLD 11.78 GAL/SK H2O
Event	15	Shutdown	12/24/2017	02:32:15	USER					
Event	16	Drop Top Plug	12/24/2017	02:33:42	COM5					PLUG AWAY

Event	17	Pump Displacement	12/24/2017	02:34:08	COM5	8.33	10.00	780.00	84.9	FRESH H2O DISPLACEMENT
Event	18	Slow Rate	12/24/2017	02:44:22	USER	8.33	2.00	326.00	74.0	
Event	19	Bump Plug	12/24/2017	02:48:52	COM5	8.33	2.00	986.00	84.9	PLUG BUMPED AT CALCULATED DISPLACEMENT. FINAL;L CIRC PRESSURE WAS 290PSI
Event	20	Check Floats	12/24/2017	02:50:44	USER					FLOATS HELD, GAINED 1/2 BBL BACK TO PUMP
Event	21	End Job	12/24/2017	02:52:42	COM5					
Event	22	Post-Job Safety Meeting (Pre Rig-Down)	12/24/2017	03:00:00	USER					GOOD CIRCULATION THROUGHOUT JOB. PIPE WAS LEFT STATIC. CIRCULATED 15 BBL CMT TO SURFACE, 40# SUGAR USED. NO ADD HOURS CHARGED
Event	23	Rig-Down Equipment	12/24/2017	03:05:00	USER					
Event	24	Pre-Convoy Safety Meeting	12/24/2017	03:55:00	USER					
Event	25	Crew Leave Location	12/24/2017	04:00:00	USER					THANK YOU FOR CHOOSING HALLIBURTON CEMENTING OF GRAND JCT, CO ANTHONY ANDREWS AND CREW

# TEP - PA 521-25 - 9 5/8" SURFACE



- |   |                          |                     |   |
|---|--------------------------|---------------------|---|
| ① Call Out                              | ⑧ Rig-Up Equipment       | ⑮ Shutdown          | 22 Post-Job Safety Meeting (Pre Rig-Down) |
| ② Pre-Convoy Safety Meeting             | ⑨ Pre-Job Safety Meeting | ⑯ Drop Top Plug     | 23 Rig-Down Equipment                     |
| ③ Crew Leave Yard                       | ⑩ Start Job              | ⑰ Pump Displacement | 24 Pre-Convoy Safety Meeting              |
| ④ Arrive At Loc                         | ⑪ Test Lines             | ⑱ Slow Rate         | 25 Crew Leave Location                    |
| ⑤ Assessment Of Location Safety Meeting | ⑫ Pump Spacer 1          | ⑲ Bump Plug         |   |
| ⑥ Spot Equipment                        | ⑬ Pump Lead Cement       | 20 Check Floats     |   |
| ⑦ Pre-Rig Up Safety Meeting             | ⑭ Pump Tail Cement       | 21 End Job          |   |

▼ **HALLIBURTON** | iCem® Service

Created: 2017-12-24 00:32:35, Version: 4.2.393

Edit

Customer: TEP ROCKY MOUNTAIN LLC-EBUS

Job Date: 12/24/2017 12:35:03 AM

Well: PA 521-25

Representative: MATT HUTSON

Sales Order #: 904526112

ELITE 8: TRAVIS BROWN/ ANTHONY ANDREWS

# TEP - PA 521-25 - 9 5/8" SURFACE

