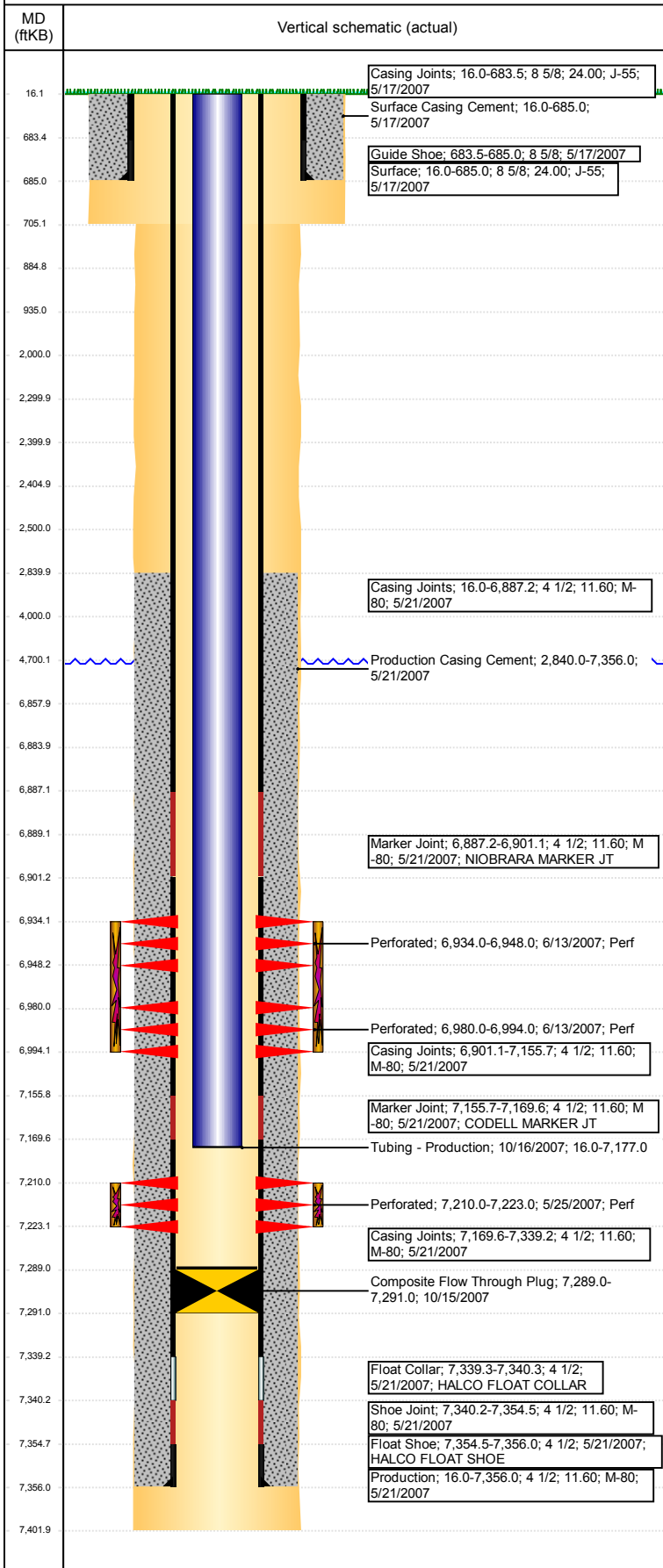


Wellbore Schematic Input Report

Well Name: KARAKAKES H13-32

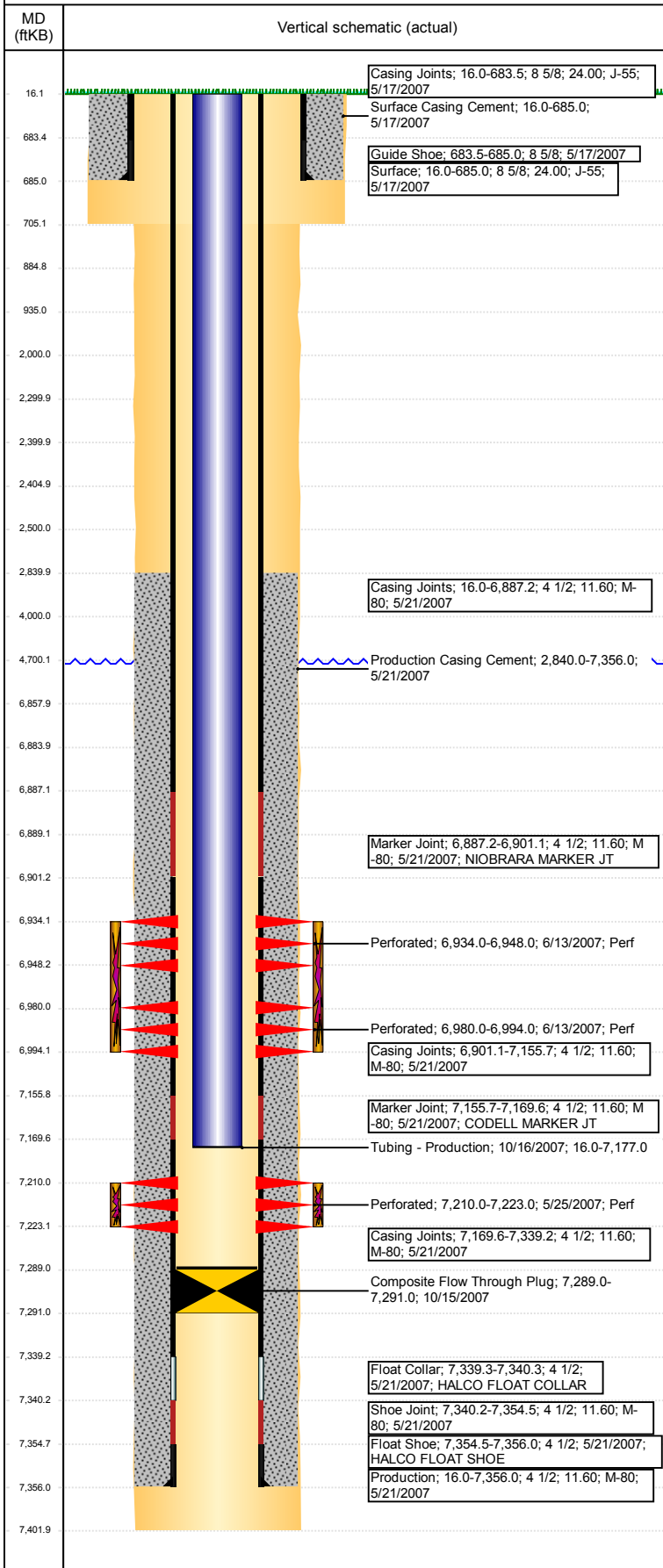
DEVIATED - ORIGINAL HOLE, 2/24/2018 5:14:18 PM



Well Header							
API 05-123-25084		Well Report Center 424423420		Well Configuration Type DEVIATED			
Original KB Elevation (ft) 4,853		KB - GL / MSL (ftKB) 16.00		Spud Date 5/16/2007		P & A Date	
Production Route Watt - C1-09			Well Production Status PR				SoRT Ignore No
Directions To Well				Actual Latitude (°) 40.22472588		Actual Longitude (°) -104.61766527	
Comment PERMITTED DIRECTIONAL. 10/15/07 CHASED CIPP @7289', 66' OF RATHOLE. DISCREPENCY W/ SURFACE CSG SET DEPTH- STATE 689', DRL RPTS 685', USED 685'. STATE SHOWS SHUT IN SINCE MARCH 2017.							
Congressional Location							
Quarter 3 NW	Quarter 4 SW	Section 13	Township 3	Twnshp N/S Dir N	Range 65	Range E/W Dir W	
Rig Operator							
Rig Operator							
Plug Back Total Depths							
Date	Depth (ftKB)	Method		Com			
10/15/2007	7,289.0	TAG		CHASED CIPP TO 7289 AND TAGGED			
Wellbore Sections							
Section Des		Size (in)		Act Top, MD (ftKB)		Act Btm, MD (ftKB)	
SURFACE		12 1/4		16		705	
PRODUCTION		7 7/8		705		7,402	
Zone Statuses							
Zone Name		Status Date		Status			
CODELL		8/9/2007		PR			
NIOBRARA		8/9/2007		PR			
Casing Strings							
Surface, 685.0ftKB							
Casing Description	Run Date	OD (in)	Wt/Len (l...	Grade	Top, MD (ft...	MD (ftKB)	
Surface	5/17/2007	8 5/8	24.00	J-55	16.0	685.0	
Production, 7,356.0ftKB							
Casing Description	Run Date	OD (in)	Wt/Len (l...	Grade	Top, MD (ft...	MD (ftKB)	
Production	5/21/2007	4 1/2	11.60	M-80	16.0	7,356.0	
Cement							
Des		Start Date		Top (ftKB)		Btm (ftKB)	
Surface Casing Cement		5/17/2007		16.0		685.0	
Production Casing Cement		5/21/2007		2,840.0		7,356.0	
Proposed Cement							
Des				Top (ftKB)		Btm (ftKB)	
Dump Bail				6,858.0		6,884.0	
Balance Plug				4,000.0		4,700.0	
Balance Plug				2,300.0		2,400.0	
Balance Plug				2,405.0		2,500.0	
Cement Squeeze				2,000.0		2,500.0	
Balance Plug				885.0		935.0	
Balance Plug				685.0		885.0	
Balance Plug				16.0		685.0	
Tubing Strings							
Tubing Description	Run Date	String...	ID (in)	Wt (lb/ft)	Grade	Len (ft)	Set De...
Tubing - Production	10/16/2007	2 3/8	2.00	4.70	J-55	7,161.00	
7							
Tubing Components							
Item Des	OD (in)	Wt (lb/ft)	Grade	Jts	Len (ft)	Btm (ftKB)	Btm (TVD) (ftKB)
EUE 8rd Tubing	2 3/8	4.70	J-55	234	7,159.50	7,175.5	
Seal Nipple	2 3/8			1	1.00	7,176.5	
Notched collar	2 3/8			1	0.50	7,177.0	
Other In Hole							
Run Date	Des			OD (in)	Top (ftKB)	Btm (ftKB)	
10/15/2007	Composite Flow Through Plug			3.99	7,289.0	7,291.0	
Proposed Other In Hole							
Des				OD (in)	Top (ftKB)	Btm (ftKB)	
Cement Retainer				4	2,400.0	2,405.0	
Cast Iron Bridge Plug				4	6,884.0	6,889.0	

Well Name: KARAKAKES H13-32

DEVIATED - ORIGINAL HOLE, 2/24/2018 5:14:19 PM



Logs			
Date	Type	Top, MD (ftKB)	Btm, MD (ftKB)
5/21/2007	COMPENSATED DENSITY	3,000.0	7,379.0
5/21/2007	INDUCTION	670.0	7,399.0
5/25/2007	CEMENT BOND	2,710.0	7,316.0
10/20/2014	GYRO	10.0	7,100.0

Perforation Data				
Linked Zone	Sum of Entered Shot Total	Top (ftKB)	Btm (ftKB)	Date
NIOBRARA, ORIGINAL HOLE	56	6,934.00	6,948.00	6/13/2007
NIOBRARA, ORIGINAL HOLE	56	6,980.00	6,994.00	6/13/2007
CODELL, ORIGINAL HOLE	52	7,210.00	7,223.00	5/25/2007
Total (Sum)	164			

Proposed Perforations				
Linked Zone	Sum of En...	Top Depth (ftKB)	Btm (ftKB)	Date
CODELL, ORIGINAL HOLE	0	2,500.00	2,500.00	2/6/2018
Total (Sum)	0			

Job Supply Amounts					
Supply Item Des	Type	Uni...	Job Category	Total...	Total...