

VERDAD OIL & GAS CORPORATION

Location: COLORADO Slot: SLOTH06 HOMESTEAD 6 (2444'FSL & 1438'FEL, SEC.34)
Field: WELD COUNTY (NAD83/TN) Well: HOMESTEAD 6
Facility: SEC.34-T1N-R66W Wellbore: HOMESTEAD 6 PWB

Plot reference wellpath is HOMESTEAD 6 (REV-A.0) PWP	Grid System: NAD83 / Lambert Colorado SP, Northern Zone (501), US feet
True vertical depths are referenced to XTREME 20 (16'RKB+513'GL) (RKB)	* = Wellpath was transformed from a different geoidetic datum
Measured depths are referenced to XTREME 20 (16'RKB+513'GL) (RKB)	North Reference: True north
XTREME 20 (16'RKB+513'GL) (RKB) to Mean Sea Level: 5154 feet	Scale: True distance
Mean Sea Level to Mud line (At Slot: SLOTH06 HOMESTEAD 6 (2444'FSL & 1438'FEL, SEC.34)): 0 feet	Depths are in feet
Coordinates are in feet referenced to Slot	Created by: guesaler on 2018-01-31
	Database: WA_DEN_Denver_Defn

Location Information

Facility Name	Grid East (US ft)	Grid North (US ft)	Latitude	Longitude
SEC.34-T1N-R66W	320759.837	1246340.128	40°00'25.920"N	104°45'27.396"W
Slot	Local N (ft)	Local E (ft)	Grid East (US ft)	Grid North (US ft)
SLOTH06 HOMESTEAD 6 (2444'FSL & 1438'FEL, SEC.34)	0.00	-389.39	320759.837	1246336.871
XTREME 20 (16'RKB+513'GL) (RKB) to Mud line (At Slot: SLOTH06 HOMESTEAD 6 (2444'FSL & 1438'FEL, SEC.34))			5154ft	
Mean Sea Level to Mud line (At Slot: SLOTH06 HOMESTEAD 6 (2444'FSL & 1438'FEL, SEC.34))			0ft	
XTREME 20 (16'RKB+513'GL) (RKB) to Mean Sea Level			5154ft	

Bottom Hole Location

MD (ft)	Inc (°)	Az (°)	TVD (ft)	Local N (ft)	Local E (ft)	Grid East (US ft)	Grid North (US ft)	Latitude	Longitude
20149.14	90.024	180.354	7483.00	-12225.37	-2132.87	3205538.91	1234094.55	39°58'25.104"N	104°45'59.796"W

Well Profile Data

Design Comment	MD (ft)	Inc (°)	Az (°)	TVD (ft)	Local N (ft)	Local E (ft)	DLS (°/100ft)	VS (ft)
Tie On	16.00	0.000	279.313	16.00	0.00	0.00	0.00	0.00
End of Tangent	1600.00	0.000	279.313	1600.00	0.00	0.00	0.00	0.00
End of Build	2663.47	21.269	279.313	2639.21	31.58	-192.56	2.00	1.99
End of Tangent	7260.42	21.269	279.313	6923.04	301.43	-1838.14	0.00	18.97
End of 3D Arc	8193.02	90.024	180.354	7488.00	-2659.49	-2059.01	10.00	619.35
End of Tangent	20149.14	90.024	180.354	7483.00	-12225.37	-2132.87	0.00	12410.03

Targets

Name	MD (ft)	TVD (ft)	Local N (ft)	Local E (ft)	Grid East (US ft)	Grid North (US ft)	Latitude	Longitude
HOMESTEAD 1 SEC.34-T1N-R66W	-1.00	-3.84	-75.44	320761.08	124633.07	40°00'25.920"N	104°45'27.396"W	
HOMESTEAD 1 SEC.34-T1S-R66W	-1.00	-3.84	-75.44	320761.08	124633.07	40°00'25.920"N	104°45'27.396"W	
HOMESTEAD 1 SEC.3-T1S-R66W	-1.00	-3.84	-75.44	320761.08	124633.07	40°00'25.920"N	104°45'27.396"W	
HOMESTEAD 6 BHL ON PLAT, REV-1 (460'FSL & 1228'FWL, SEC.10)	20149.14	7483.00	-12225.37	-2132.87	3205538.91	1234094.55	39°58'25.104"N	104°45'59.796"W
HOMESTEAD 6 BHL ON PLAT, REV-1 (460'FSL & 1228'FWL, SEC.10)	20149.14	7483.00	-12225.37	-2132.87	3205538.91	1234094.55	39°58'25.104"N	104°45'59.796"W
HOMESTEAD 1 SEC.34-T1N-R66W Hardline (460' Setback)	7550.00	3.84	-75.44	320761.08	124633.07	40°00'25.920"N	104°45'27.396"W	
HOMESTEAD 1 SEC.3-T1S-R66W Hardline (460' Setback)	7550.00	3.84	-75.44	320761.08	124633.07	40°00'25.920"N	104°45'27.396"W	
HOMESTEAD 1 SEC.3-T1S-R66W Hardline (460' Setback)	7550.00	3.84	-75.44	320761.08	124633.07	40°00'25.920"N	104°45'27.396"W	
HOMESTEAD 1 SEC.3-T1S-R66W Hardline (460' Setback)	7550.00	3.84	-75.44	320761.08	124633.07	40°00'25.920"N	104°45'27.396"W	

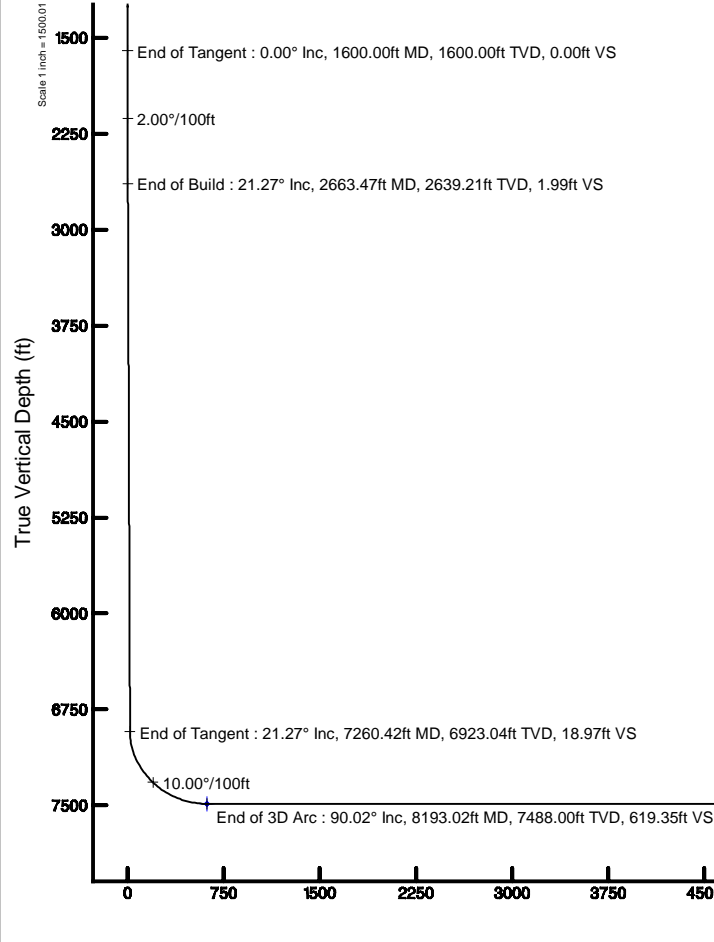
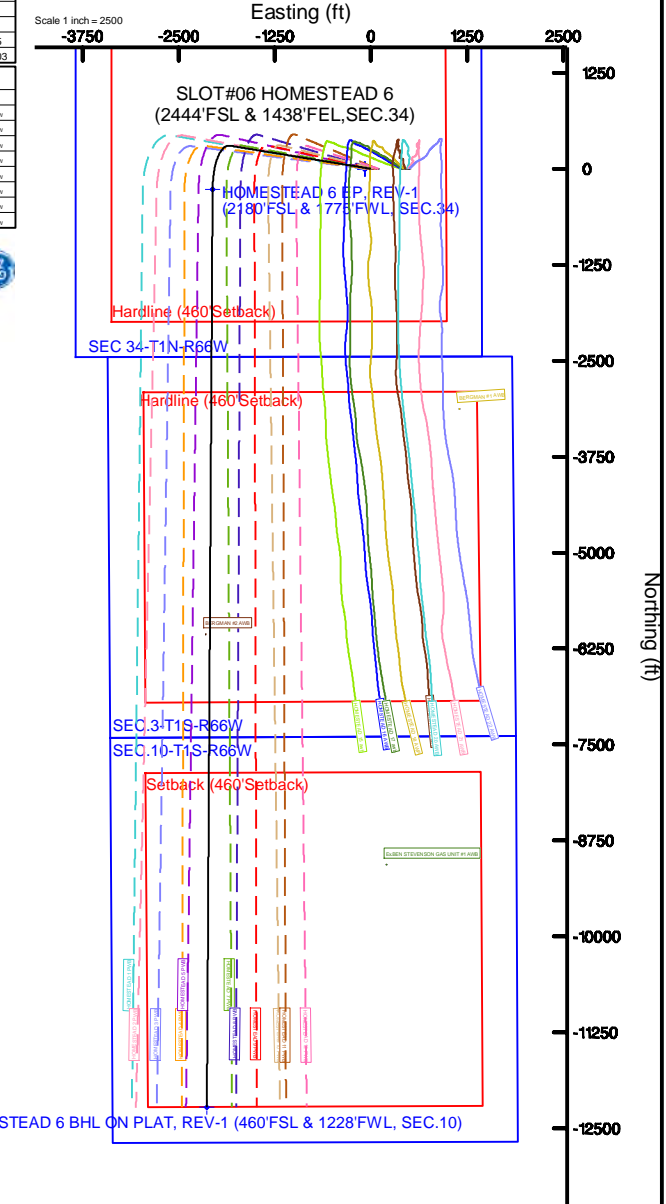


BGGM (1900.0 to 2019.0) Dip: 66.54° Field: 52093.4 nT
Magnetic North is 8.30 degrees East of True North (at 1/25/2018)

To correct azimuth from Magnetic to True add 8.30 degrees

Survey Program

Start MD (ft)	End MD (ft)	Tool	Model	Log Name/Comment	Wellbore
16.00	20149.14	BHL NavTrak	BHL NavTrak (Rotating-Axial Corr)		HOMESTEAD 6 PWB





Planned Wellpath Report

HOMESTEAD 6 (REV-A.0) PWP

Page 1 of 10



REFERENCE WELLPATH IDENTIFICATION			
Operator	VERDAD OIL & GAS CORPORATION	Slot	SLOT#06 HOMESTEAD 6 (2444'FSL & 1438'FEL,SEC.34)
Area	COLORADO	Well	HOMESTEAD 6
Field	WELD COUNTY (NAD83/TN)	Wellbore	HOMESTEAD 6 PWB
Facility	SEC.34-T1N-R66W		

REPORT SETUP INFORMATION			
Projection System	NAD83 / Lambert Colorado SP, Northern Zone (501), US feet	Software System	WellArchitect® 5.0
North Reference	True	User	Guenaler
Scale	0.999966	Report Generated	1/31/2018 at 5:04:20 PM
Convergence at slot	0.48° East	Database/Source file	WA_DEN_Denver_Defn/HOMESTEAD_6__REV-A.0__PWP.xml

WELLPATH LOCATION						
	Local coordinates		Grid coordinates		Geographic coordinates	
	North[ft]	East[ft]	Easting[US ft]	Northing[US ft]	Latitude	Longitude
Slot Location	0.00	-389.39	3207569.48	1246336.87	40°00'25.920"N	104°45'32.400"W
Facility Reference Pt			3207958.84	1246340.13	40°00'25.920"N	104°45'27.396"W
Field Reference Pt			3242930.13	1254608.21	40°01'44.490"N	104°37'56.946"W

WELLPATH DATUM			
Calculation method	Minimum curvature	XTREME 20 (16'RKB+5138'GL) (RKB) to Facility Vertical Datum	5154.00ft
Horizontal Reference Pt	Slot	XTREME 20 (16'RKB+5138'GL) (RKB) to Mean Sea Level	5154.00ft
Vertical Reference Pt	XTREME 20 (16'RKB+5138'GL) (RKB)	XTREME 20 (16'RKB+5138'GL) (RKB) to Mud Line at Slot (SLOT#06 HOMESTEAD 6 (2444'FSL & 1438'FEL,SEC.34))	5154.00ft
MD Reference Pt	XTREME 20 (16'RKB+5138'GL) (RKB)	Section Origin	N 0.00, E 0.00 ft
Field Vertical Reference	Mean Sea Level	Section Azimuth	189.90°



Planned Wellpath Report

HOMESTEAD 6 (REV-A.0) PWP



REFERENCE WELLPATH IDENTIFICATION			
Operator	VERDAD OIL & GAS CORPORATION	Slot	SLOT#06 HOMESTEAD 6 (2444'FSL & 1438'FEL,SEC.34)
Area	COLORADO	Well	HOMESTEAD 6
Field	WELD COUNTY (NAD83/TN)	Wellbore	HOMESTEAD 6 PWB
Facility	SEC.34-T1N-R66W		

WELLPATH DATA (208 stations) † = interpolated/extrapolated station										
MD [ft]	Inclination [°]	Azimuth [°]	TVD [ft]	Vert Sect [ft]	North [ft]	East [ft]	Latitude	Longitude	DLS [°/100ft]	Comments
0.00†	0.000	279.313	0.00	0.00	0.00	0.00	40°00'25.920"N	104°45'32.400"W	0.00	
16.00	0.000	279.313	16.00	0.00	0.00	0.00	40°00'25.920"N	104°45'32.400"W	0.00	Tie On
116.00†	0.000	279.313	116.00	0.00	0.00	0.00	40°00'25.920"N	104°45'32.400"W	0.00	
216.00†	0.000	279.313	216.00	0.00	0.00	0.00	40°00'25.920"N	104°45'32.400"W	0.00	
316.00†	0.000	279.313	316.00	0.00	0.00	0.00	40°00'25.920"N	104°45'32.400"W	0.00	
416.00†	0.000	279.313	416.00	0.00	0.00	0.00	40°00'25.920"N	104°45'32.400"W	0.00	
516.00†	0.000	279.313	516.00	0.00	0.00	0.00	40°00'25.920"N	104°45'32.400"W	0.00	
616.00†	0.000	279.313	616.00	0.00	0.00	0.00	40°00'25.920"N	104°45'32.400"W	0.00	
716.00†	0.000	279.313	716.00	0.00	0.00	0.00	40°00'25.920"N	104°45'32.400"W	0.00	
816.00†	0.000	279.313	816.00	0.00	0.00	0.00	40°00'25.920"N	104°45'32.400"W	0.00	
916.00†	0.000	279.313	916.00	0.00	0.00	0.00	40°00'25.920"N	104°45'32.400"W	0.00	
1016.00†	0.000	279.313	1016.00	0.00	0.00	0.00	40°00'25.920"N	104°45'32.400"W	0.00	
1116.00†	0.000	279.313	1116.00	0.00	0.00	0.00	40°00'25.920"N	104°45'32.400"W	0.00	
1216.00†	0.000	279.313	1216.00	0.00	0.00	0.00	40°00'25.920"N	104°45'32.400"W	0.00	
1316.00†	0.000	279.313	1316.00	0.00	0.00	0.00	40°00'25.920"N	104°45'32.400"W	0.00	
1416.00†	0.000	279.313	1416.00	0.00	0.00	0.00	40°00'25.920"N	104°45'32.400"W	0.00	
1516.00†	0.000	279.313	1516.00	0.00	0.00	0.00	40°00'25.920"N	104°45'32.400"W	0.00	
1600.00	0.000	279.313	1600.00	0.00	0.00	0.00	40°00'25.920"N	104°45'32.400"W	0.00	End of Tangent
1616.00†	0.320	279.313	1616.00	0.00	0.01	-0.04	40°00'25.920"N	104°45'32.401"W	2.00	
1716.00†	2.320	279.313	1715.97	0.02	0.38	-2.32	40°00'25.924"N	104°45'32.430"W	2.00	
1816.00†	4.320	279.313	1815.80	0.08	1.32	-8.03	40°00'25.933"N	104°45'32.503"W	2.00	
1916.00†	6.320	279.313	1915.36	0.18	2.82	-17.18	40°00'25.948"N	104°45'32.621"W	2.00	
2016.00†	8.320	279.313	2014.54	0.31	4.88	-29.75	40°00'25.968"N	104°45'32.782"W	2.00	
2116.00†	10.320	279.313	2113.21	0.47	7.50	-45.73	40°00'25.994"N	104°45'32.988"W	2.00	
2216.00†	12.320	279.313	2211.26	0.67	10.68	-65.10	40°00'26.026"N	104°45'33.237"W	2.00	
2316.00†	14.320	279.313	2308.57	0.91	14.40	-87.84	40°00'26.062"N	104°45'33.529"W	2.00	
2416.00†	16.320	279.313	2405.01	1.18	18.68	-113.91	40°00'26.105"N	104°45'33.864"W	2.00	
2516.00†	18.320	279.313	2500.47	1.48	23.50	-143.29	40°00'26.152"N	104°45'34.241"W	2.00	
2616.00†	20.320	279.313	2594.84	1.82	28.85	-175.93	40°00'26.205"N	104°45'34.661"W	2.00	
2663.47	21.269	279.313	2639.21	1.99	31.58	-192.56	40°00'26.232"N	104°45'34.875"W	2.00	End of Build



Planned Wellpath Report

HOMESTEAD 6 (REV-A.0) PWP

Page 3 of 10



REFERENCE WELLPATH IDENTIFICATION			
Operator	VERDAD OIL & GAS CORPORATION	Slot	SLOT#06 HOMESTEAD 6 (2444'FSL & 1438'FEL,SEC.34)
Area	COLORADO	Well	HOMESTEAD 6
Field	WELD COUNTY (NAD83/TN)	Wellbore	HOMESTEAD 6 PWB
Facility	SEC.34-T1N-R66W		

WELLPATH DATA (208 stations) † = interpolated/extrapolated station											
MD [ft]	Inclination [°]	Azimuth [°]	TVD [ft]	Vert Sect [ft]	North [ft]	East [ft]	Latitude	Longitude	DLS [°/100ft]	Comments	
2716.00†	21.269	279.313	2688.16	2.18	34.66	-211.37	40°00'26.263"N	104°45'35.116"W	0.00		
2816.00†	21.269	279.313	2781.35	2.55	40.53	-247.16	40°00'26.321"N	104°45'35.576"W	0.00		
2916.00†	21.269	279.313	2874.54	2.92	46.40	-282.96	40°00'26.379"N	104°45'36.036"W	0.00		
3016.00†	21.269	279.313	2967.73	3.29	52.27	-318.76	40°00'26.437"N	104°45'36.496"W	0.00		
3116.00†	21.269	279.313	3060.92	3.66	58.14	-354.56	40°00'26.495"N	104°45'36.956"W	0.00		
3216.00†	21.269	279.313	3154.11	4.03	64.01	-390.35	40°00'26.553"N	104°45'37.416"W	0.00		
3316.00†	21.269	279.313	3247.30	4.40	69.88	-426.15	40°00'26.611"N	104°45'37.876"W	0.00		
3416.00†	21.269	279.313	3340.48	4.77	75.75	-461.95	40°00'26.669"N	104°45'38.337"W	0.00		
3516.00†	21.269	279.313	3433.67	5.14	81.62	-497.74	40°00'26.727"N	104°45'38.797"W	0.00		
3616.00†	21.269	279.313	3526.86	5.51	87.49	-533.54	40°00'26.785"N	104°45'39.257"W	0.00		
3716.00†	21.269	279.313	3620.05	5.88	93.36	-569.34	40°00'26.843"N	104°45'39.717"W	0.00		
3816.00†	21.269	279.313	3713.24	6.25	99.23	-605.14	40°00'26.901"N	104°45'40.177"W	0.00		
3916.00†	21.269	279.313	3806.43	6.62	105.10	-640.93	40°00'26.959"N	104°45'40.637"W	0.00		
4016.00†	21.269	279.313	3899.62	6.99	110.97	-676.73	40°00'27.017"N	104°45'41.097"W	0.00		
4116.00†	21.269	279.313	3992.80	7.36	116.84	-712.53	40°00'27.075"N	104°45'41.557"W	0.00		
4216.00†	21.269	279.313	4085.99	7.72	122.71	-748.33	40°00'27.133"N	104°45'42.017"W	0.00		
4316.00†	21.269	279.313	4179.18	8.09	128.58	-784.12	40°00'27.191"N	104°45'42.477"W	0.00		
4416.00†	21.269	279.313	4272.37	8.46	134.45	-819.92	40°00'27.249"N	104°45'42.937"W	0.00		
4516.00†	21.269	279.313	4365.56	8.83	140.32	-855.72	40°00'27.307"N	104°45'43.397"W	0.00		
4616.00†	21.269	279.313	4458.75	9.20	146.19	-891.51	40°00'27.365"N	104°45'43.857"W	0.00		
4716.00†	21.269	279.313	4551.93	9.57	152.06	-927.31	40°00'27.423"N	104°45'44.317"W	0.00		
4816.00†	21.269	279.313	4645.12	9.94	157.93	-963.11	40°00'27.481"N	104°45'44.777"W	0.00		
4916.00†	21.269	279.313	4738.31	10.31	163.80	-998.91	40°00'27.539"N	104°45'45.237"W	0.00		
5016.00†	21.269	279.313	4831.50	10.68	169.67	-1034.70	40°00'27.597"N	104°45'45.697"W	0.00		
5116.00†	21.269	279.313	4924.69	11.05	175.54	-1070.50	40°00'27.655"N	104°45'46.157"W	0.00		
5216.00†	21.269	279.313	5017.88	11.42	181.42	-1106.30	40°00'27.713"N	104°45'46.617"W	0.00		
5316.00†	21.269	279.313	5111.07	11.79	187.29	-1142.09	40°00'27.771"N	104°45'47.077"W	0.00		
5416.00†	21.269	279.313	5204.25	12.16	193.16	-1177.89	40°00'27.829"N	104°45'47.537"W	0.00		
5516.00†	21.269	279.313	5297.44	12.53	199.03	-1213.69	40°00'27.887"N	104°45'47.997"W	0.00		
5616.00†	21.269	279.313	5390.63	12.90	204.90	-1249.49	40°00'27.945"N	104°45'48.457"W	0.00		



Planned Wellpath Report

HOMESTEAD 6 (REV-A.0) PWP



REFERENCE WELLPATH IDENTIFICATION			
Operator	VERDAD OIL & GAS CORPORATION	Slot	SLOT#06 HOMESTEAD 6 (2444'FSL & 1438'FEL,SEC.34)
Area	COLORADO	Well	HOMESTEAD 6
Field	WELD COUNTY (NAD83/TN)	Wellbore	HOMESTEAD 6 PWB
Facility	SEC.34-T1N-R66W		

WELLPATH DATA (208 stations) † = interpolated/extrapolated station										
MD [ft]	Inclination [°]	Azimuth [°]	TVD [ft]	Vert Sect [ft]	North [ft]	East [ft]	Latitude	Longitude	DLS [°/100ft]	Comments
5716.00†	21.269	279.313	5483.82	13.27	210.77	-1285.28	40°00'28.003"N	104°45'48.917"W	0.00	
5816.00†	21.269	279.313	5577.01	13.64	216.64	-1321.08	40°00'28.061"N	104°45'49.377"W	0.00	
5916.00†	21.269	279.313	5670.20	14.01	222.51	-1356.88	40°00'28.119"N	104°45'49.837"W	0.00	
6016.00†	21.269	279.313	5763.39	14.38	228.38	-1392.67	40°00'28.177"N	104°45'50.297"W	0.00	
6116.00†	21.269	279.313	5856.57	14.75	234.25	-1428.47	40°00'28.234"N	104°45'50.757"W	0.00	
6216.00†	21.269	279.313	5949.76	15.12	240.12	-1464.27	40°00'28.292"N	104°45'51.217"W	0.00	
6316.00†	21.269	279.313	6042.95	15.48	245.99	-1500.07	40°00'28.350"N	104°45'51.678"W	0.00	
6416.00†	21.269	279.313	6136.14	15.85	251.86	-1535.86	40°00'28.408"N	104°45'52.138"W	0.00	
6516.00†	21.269	279.313	6229.33	16.22	257.73	-1571.66	40°00'28.466"N	104°45'52.598"W	0.00	
6616.00†	21.269	279.313	6322.52	16.59	263.60	-1607.46	40°00'28.524"N	104°45'53.058"W	0.00	
6716.00†	21.269	279.313	6415.71	16.96	269.47	-1643.26	40°00'28.582"N	104°45'53.518"W	0.00	
6816.00†	21.269	279.313	6508.89	17.33	275.34	-1679.05	40°00'28.640"N	104°45'53.978"W	0.00	
6916.00†	21.269	279.313	6602.08	17.70	281.21	-1714.85	40°00'28.698"N	104°45'54.438"W	0.00	
7016.00†	21.269	279.313	6695.27	18.07	287.08	-1750.65	40°00'28.756"N	104°45'54.898"W	0.00	
7116.00†	21.269	279.313	6788.46	18.44	292.95	-1786.44	40°00'28.814"N	104°45'55.358"W	0.00	
7216.00†	21.269	279.313	6881.65	18.81	298.82	-1822.24	40°00'28.872"N	104°45'55.818"W	0.00	
7260.42	21.269	279.313	6923.04	18.97	301.43	-1838.14	40°00'28.898"N	104°45'56.022"W	0.00	End of Tangent
7316.00†	21.155	263.913	6974.90	21.84	301.99	-1858.08	40°00'28.904"N	104°45'56.278"W	10.00	
7416.00†	24.235	239.035	7067.36	40.28	289.49	-1893.71	40°00'28.780"N	104°45'56.736"W	10.00	
7516.00†	30.297	221.520	7156.35	75.28	259.97	-1928.12	40°00'28.488"N	104°45'57.178"W	10.00	
7616.00†	37.932	209.926	7239.16	125.76	214.33	-1960.26	40°00'28.037"N	104°45'57.591"W	10.00	
7716.00†	46.362	201.873	7313.29	190.20	153.95	-1989.14	40°00'27.441"N	104°45'57.963"W	10.00	
7816.00†	55.216	195.855	7376.48	266.64	80.68	-2013.91	40°00'26.717"N	104°45'58.281"W	10.00	
7916.00†	64.308	191.024	7426.81	352.75	-3.26	-2033.79	40°00'25.887"N	104°45'58.536"W	10.00	
8016.00†	73.536	186.888	7462.75	445.92	-95.32	-2048.20	40°00'24.977"N	104°45'58.721"W	10.00	
8116.00†	82.838	183.133	7483.21	543.31	-192.71	-2056.68	40°00'24.015"N	104°45'58.830"W	10.00	
8193.02	90.024	180.354	7488.00 [†]	619.35	-269.49	-2059.01	40°00'23.256"N	104°45'58.860"W	10.00	End of 3D Arc
8216.00†	90.024	180.354	7487.99	642.01	-292.46	-2059.15	40°00'23.029"N	104°45'58.862"W	0.00	
8316.00†	90.024	180.354	7487.95	740.63	-392.46	-2059.77	40°00'22.041"N	104°45'58.870"W	0.00	
8416.00†	90.024	180.354	7487.91	839.24	-492.46	-2060.39	40°00'21.053"N	104°45'58.877"W	0.00	



Planned Wellpath Report

HOMESTEAD 6 (REV-A.0) PWP

Page 5 of 10



REFERENCE WELLPATH IDENTIFICATION			
Operator	VERDAD OIL & GAS CORPORATION	Slot	SLOT#06 HOMESTEAD 6 (2444'FSL & 1438'FEL,SEC.34)
Area	COLORADO	Well	HOMESTEAD 6
Field	WELD COUNTY (NAD83/TN)	Wellbore	HOMESTEAD 6 PWB
Facility	SEC.34-T1N-R66W		

WELLPATH DATA (208 stations) † = interpolated/extrapolated station										
MD [ft]	Inclination [°]	Azimuth [°]	TVD [ft]	Vert Sect [ft]	North [ft]	East [ft]	Latitude	Longitude	DLS [°/100ft]	Comments
8516.00†	90.024	180.354	7487.86	937.86	-592.46	-2061.00	40°00'20.064"N	104°45'58.885"W	0.00	
8616.00†	90.024	180.354	7487.82	1036.48	-692.46	-2061.62	40°00'19.076"N	104°45'58.893"W	0.00	
8716.00†	90.024	180.354	7487.78	1135.09	-792.45	-2062.24	40°00'18.088"N	104°45'58.901"W	0.00	
8816.00†	90.024	180.354	7487.74	1233.71	-892.45	-2062.86	40°00'17.100"N	104°45'58.909"W	0.00	
8916.00†	90.024	180.354	7487.70	1332.33	-992.45	-2063.47	40°00'16.111"N	104°45'58.917"W	0.00	
9016.00†	90.024	180.354	7487.66	1430.94	-1092.45	-2064.09	40°00'15.123"N	104°45'58.924"W	0.00	
9116.00†	90.024	180.354	7487.61	1529.56	-1192.45	-2064.71	40°00'14.135"N	104°45'58.932"W	0.00	
9216.00†	90.024	180.354	7487.57	1628.17	-1292.45	-2065.33	40°00'13.147"N	104°45'58.940"W	0.00	
9316.00†	90.024	180.354	7487.53	1726.79	-1392.44	-2065.95	40°00'12.159"N	104°45'58.948"W	0.00	
9416.00†	90.024	180.354	7487.49	1825.41	-1492.44	-2066.56	40°00'11.170"N	104°45'58.956"W	0.00	
9516.00†	90.024	180.354	7487.45	1924.02	-1592.44	-2067.18	40°00'10.182"N	104°45'58.964"W	0.00	
9616.00†	90.024	180.354	7487.40	2022.64	-1692.44	-2067.80	40°00'09.194"N	104°45'58.971"W	0.00	
9716.00†	90.024	180.354	7487.36	2121.26	-1792.44	-2068.42	40°00'08.206"N	104°45'58.979"W	0.00	
9816.00†	90.024	180.354	7487.32	2219.87	-1892.43	-2069.03	40°00'07.218"N	104°45'58.987"W	0.00	
9916.00†	90.024	180.354	7487.28	2318.49	-1992.43	-2069.65	40°00'06.229"N	104°45'58.995"W	0.00	
10016.00†	90.024	180.354	7487.24	2417.11	-2092.43	-2070.27	40°00'05.241"N	104°45'59.003"W	0.00	
10116.00†	90.024	180.354	7487.20	2515.72	-2192.43	-2070.89	40°00'04.253"N	104°45'59.011"W	0.00	
10216.00†	90.024	180.354	7487.15	2614.34	-2292.43	-2071.51	40°00'03.265"N	104°45'59.018"W	0.00	
10316.00†	90.024	180.354	7487.11	2712.95	-2392.42	-2072.12	40°00'02.276"N	104°45'59.026"W	0.00	
10416.00†	90.024	180.354	7487.07	2811.57	-2492.42	-2072.74	40°00'01.288"N	104°45'59.034"W	0.00	
10516.00†	90.024	180.354	7487.03	2910.19	-2592.42	-2073.36	40°00'00.300"N	104°45'59.042"W	0.00	
10616.00†	90.024	180.354	7486.99	3008.80	-2692.42	-2073.98	39°59'59.312"N	104°45'59.050"W	0.00	
10716.00†	90.024	180.354	7486.94	3107.42	-2792.42	-2074.59	39°59'58.324"N	104°45'59.058"W	0.00	
10816.00†	90.024	180.354	7486.90	3206.04	-2892.41	-2075.21	39°59'57.335"N	104°45'59.065"W	0.00	
10916.00†	90.024	180.354	7486.86	3304.65	-2992.41	-2075.83	39°59'56.347"N	104°45'59.073"W	0.00	
11016.00†	90.024	180.354	7486.82	3403.27	-3092.41	-2076.45	39°59'55.359"N	104°45'59.081"W	0.00	
11116.00†	90.024	180.354	7486.78	3501.88	-3192.41	-2077.07	39°59'54.371"N	104°45'59.089"W	0.00	
11216.00†	90.024	180.354	7486.74	3600.50	-3292.41	-2077.68	39°59'53.383"N	104°45'59.097"W	0.00	
11316.00†	90.024	180.354	7486.69	3699.12	-3392.40	-2078.30	39°59'52.394"N	104°45'59.105"W	0.00	
11416.00†	90.024	180.354	7486.65	3797.73	-3492.40	-2078.92	39°59'51.406"N	104°45'59.112"W	0.00	



Planned Wellpath Report

HOMESTEAD 6 (REV-A.0) PWP

Page 6 of 10



REFERENCE WELLPATH IDENTIFICATION			
Operator	VERDAD OIL & GAS CORPORATION	Slot	SLOT#06 HOMESTEAD 6 (2444'FSL & 1438'FEL,SEC.34)
Area	COLORADO	Well	HOMESTEAD 6
Field	WELD COUNTY (NAD83/TN)	Wellbore	HOMESTEAD 6 PWB
Facility	SEC.34-T1N-R66W		

WELLPATH DATA (208 stations) † = interpolated/extrapolated station										
MD [ft]	Inclination [°]	Azimuth [°]	TVD [ft]	Vert Sect [ft]	North [ft]	East [ft]	Latitude	Longitude	DLS [°/100ft]	Comments
11516.00†	90.024	180.354	7486.61	3896.35	-3592.40	-2079.54	39°59'50.418"N	104°45'59.120"W	0.00	
11616.00†	90.024	180.354	7486.57	3994.97	-3692.40	-2080.15	39°59'49.430"N	104°45'59.128"W	0.00	
11716.00†	90.024	180.354	7486.53	4093.58	-3792.40	-2080.77	39°59'48.441"N	104°45'59.136"W	0.00	
11816.00†	90.024	180.354	7486.48	4192.20	-3892.40	-2081.39	39°59'47.453"N	104°45'59.144"W	0.00	
11916.00†	90.024	180.354	7486.44	4290.82	-3992.39	-2082.01	39°59'46.465"N	104°45'59.152"W	0.00	
12016.00†	90.024	180.354	7486.40	4389.43	-4092.39	-2082.63	39°59'45.477"N	104°45'59.159"W	0.00	
12116.00†	90.024	180.354	7486.36	4488.05	-4192.39	-2083.24	39°59'44.489"N	104°45'59.167"W	0.00	
12216.00†	90.024	180.354	7486.32	4586.66	-4292.39	-2083.86	39°59'43.500"N	104°45'59.175"W	0.00	
12316.00†	90.024	180.354	7486.28	4685.28	-4392.39	-2084.48	39°59'42.512"N	104°45'59.183"W	0.00	
12416.00†	90.024	180.354	7486.23	4783.90	-4492.38	-2085.10	39°59'41.524"N	104°45'59.191"W	0.00	
12516.00†	90.024	180.354	7486.19	4882.51	-4592.38	-2085.71	39°59'40.536"N	104°45'59.199"W	0.00	
12616.00†	90.024	180.354	7486.15	4981.13	-4692.38	-2086.33	39°59'39.548"N	104°45'59.206"W	0.00	
12716.00†	90.024	180.354	7486.11	5079.75	-4792.38	-2086.95	39°59'38.559"N	104°45'59.214"W	0.00	
12816.00†	90.024	180.354	7486.07	5178.36	-4892.38	-2087.57	39°59'37.571"N	104°45'59.222"W	0.00	
12916.00†	90.024	180.354	7486.02	5276.98	-4992.37	-2088.19	39°59'36.583"N	104°45'59.230"W	0.00	
13016.00†	90.024	180.354	7485.98	5375.59	-5092.37	-2088.80	39°59'35.595"N	104°45'59.238"W	0.00	
13116.00†	90.024	180.354	7485.94	5474.21	-5192.37	-2089.42	39°59'34.606"N	104°45'59.246"W	0.00	
13216.00†	90.024	180.354	7485.90	5572.83	-5292.37	-2090.04	39°59'33.618"N	104°45'59.253"W	0.00	
13316.00†	90.024	180.354	7485.86	5671.44	-5392.37	-2090.66	39°59'32.630"N	104°45'59.261"W	0.00	
13416.00†	90.024	180.354	7485.82	5770.06	-5492.36	-2091.27	39°59'31.642"N	104°45'59.269"W	0.00	
13516.00†	90.024	180.354	7485.77	5868.68	-5592.36	-2091.89	39°59'30.654"N	104°45'59.277"W	0.00	
13616.00†	90.024	180.354	7485.73	5967.29	-5692.36	-2092.51	39°59'29.665"N	104°45'59.285"W	0.00	
13716.00†	90.024	180.354	7485.69	6065.91	-5792.36	-2093.13	39°59'28.677"N	104°45'59.292"W	0.00	
13816.00†	90.024	180.354	7485.65	6164.53	-5892.36	-2093.75	39°59'27.689"N	104°45'59.300"W	0.00	
13916.00†	90.024	180.354	7485.61	6263.14	-5992.36	-2094.36	39°59'26.701"N	104°45'59.308"W	0.00	
14016.00†	90.024	180.354	7485.56	6361.76	-6092.35	-2094.98	39°59'25.713"N	104°45'59.316"W	0.00	
14116.00†	90.024	180.354	7485.52	6460.37	-6192.35	-2095.60	39°59'24.724"N	104°45'59.324"W	0.00	
14216.00†	90.024	180.354	7485.48	6558.99	-6292.35	-2096.22	39°59'23.736"N	104°45'59.332"W	0.00	
14316.00†	90.024	180.354	7485.44	6657.61	-6392.35	-2096.83	39°59'22.748"N	104°45'59.339"W	0.00	
14416.00†	90.024	180.354	7485.40	6756.22	-6492.35	-2097.45	39°59'21.760"N	104°45'59.347"W	0.00	



Planned Wellpath Report

HOMESTEAD 6 (REV-A.0) PWP

Page 7 of 10



REFERENCE WELLPATH IDENTIFICATION			
Operator	VERDAD OIL & GAS CORPORATION	Slot	SLOT#06 HOMESTEAD 6 (2444'FSL & 1438'FEL,SEC.34)
Area	COLORADO	Well	HOMESTEAD 6
Field	WELD COUNTY (NAD83/TN)	Wellbore	HOMESTEAD 6 PWB
Facility	SEC.34-T1N-R66W		

WELLPATH DATA (208 stations) † = interpolated/extrapolated station										
MD [ft]	Inclination [°]	Azimuth [°]	TVD [ft]	Vert Sect [ft]	North [ft]	East [ft]	Latitude	Longitude	DLS [°/100ft]	Comments
14516.00†	90.024	180.354	7485.36	6854.84	-6592.34	-2098.07	39°59'20.771"N	104°45'59.355"W	0.00	
14616.00†	90.024	180.354	7485.31	6953.46	-6692.34	-2098.69	39°59'19.783"N	104°45'59.363"W	0.00	
14716.00†	90.024	180.354	7485.27	7052.07	-6792.34	-2099.31	39°59'18.795"N	104°45'59.371"W	0.00	
14816.00†	90.024	180.354	7485.23	7150.69	-6892.34	-2099.92	39°59'17.807"N	104°45'59.379"W	0.00	
14916.00†	90.024	180.354	7485.19	7249.30	-6992.34	-2100.54	39°59'16.819"N	104°45'59.386"W	0.00	
15016.00†	90.024	180.354	7485.15	7347.92	-7092.33	-2101.16	39°59'15.830"N	104°45'59.394"W	0.00	
15116.00†	90.024	180.354	7485.10	7446.54	-7192.33	-2101.78	39°59'14.842"N	104°45'59.402"W	0.00	
15216.00†	90.024	180.354	7485.06	7545.15	-7292.33	-2102.39	39°59'13.854"N	104°45'59.410"W	0.00	
15316.00†	90.024	180.354	7485.02	7643.77	-7392.33	-2103.01	39°59'12.866"N	104°45'59.418"W	0.00	
15416.00†	90.024	180.354	7484.98	7742.39	-7492.33	-2103.63	39°59'11.878"N	104°45'59.426"W	0.00	
15516.00†	90.024	180.354	7484.94	7841.00	-7592.32	-2104.25	39°59'10.889"N	104°45'59.433"W	0.00	
15616.00†	90.024	180.354	7484.90	7939.62	-7692.32	-2104.87	39°59'09.901"N	104°45'59.441"W	0.00	
15716.00†	90.024	180.354	7484.85	8038.23	-7792.32	-2105.48	39°59'08.913"N	104°45'59.449"W	0.00	
15816.00†	90.024	180.354	7484.81	8136.85	-7892.32	-2106.10	39°59'07.925"N	104°45'59.457"W	0.00	
15916.00†	90.024	180.354	7484.77	8235.47	-7992.32	-2106.72	39°59'06.936"N	104°45'59.465"W	0.00	
16016.00†	90.024	180.354	7484.73	8334.08	-8092.31	-2107.34	39°59'05.948"N	104°45'59.473"W	0.00	
16116.00†	90.024	180.354	7484.69	8432.70	-8192.31	-2107.95	39°59'04.960"N	104°45'59.480"W	0.00	
16216.00†	90.024	180.354	7484.64	8531.32	-8292.31	-2108.57	39°59'03.972"N	104°45'59.488"W	0.00	
16316.00†	90.024	180.354	7484.60	8629.93	-8392.31	-2109.19	39°59'02.984"N	104°45'59.496"W	0.00	
16416.00†	90.024	180.354	7484.56	8728.55	-8492.31	-2109.81	39°59'01.995"N	104°45'59.504"W	0.00	
16516.00†	90.024	180.354	7484.52	8827.17	-8592.31	-2110.43	39°59'01.007"N	104°45'59.512"W	0.00	
16616.00†	90.024	180.354	7484.48	8925.78	-8692.30	-2111.04	39°59'00.019"N	104°45'59.519"W	0.00	
16716.00†	90.024	180.354	7484.44	9024.40	-8792.30	-2111.66	39°58'59.031"N	104°45'59.527"W	0.00	
16816.00†	90.024	180.354	7484.39	9123.01	-8892.30	-2112.28	39°58'58.043"N	104°45'59.535"W	0.00	
16916.00†	90.024	180.354	7484.35	9221.63	-8992.30	-2112.90	39°58'57.054"N	104°45'59.543"W	0.00	
17016.00†	90.024	180.354	7484.31	9320.25	-9092.30	-2113.51	39°58'56.066"N	104°45'59.551"W	0.00	
17116.00†	90.024	180.354	7484.27	9418.86	-9192.29	-2114.13	39°58'55.078"N	104°45'59.559"W	0.00	
17216.00†	90.024	180.354	7484.23	9517.48	-9292.29	-2114.75	39°58'54.090"N	104°45'59.566"W	0.00	
17316.00†	90.024	180.354	7484.18	9616.10	-9392.29	-2115.37	39°58'53.101"N	104°45'59.574"W	0.00	
17416.00†	90.024	180.354	7484.14	9714.71	-9492.29	-2115.99	39°58'52.113"N	104°45'59.582"W	0.00	



Planned Wellpath Report

HOMESTEAD 6 (REV-A.0) PWP

Page 8 of 10



REFERENCE WELLPATH IDENTIFICATION			
Operator	VERDAD OIL & GAS CORPORATION	Slot	SLOT#06 HOMESTEAD 6 (2444'FSL & 1438'FEL,SEC.34)
Area	COLORADO	Well	HOMESTEAD 6
Field	WELD COUNTY (NAD83/TN)	Wellbore	HOMESTEAD 6 PWB
Facility	SEC.34-T1N-R66W		

WELLPATH DATA (208 stations) † = interpolated/extrapolated station											
MD [ft]	Inclination [°]	Azimuth [°]	TVD [ft]	Vert Sect [ft]	North [ft]	East [ft]	Latitude	Longitude	DLS [°/100ft]	Comments	
17516.00†	90.024	180.354	7484.10	9813.33	-9592.29	-2116.60	39°58'51.125"N	104°45'59.590"W	0.00		
17616.00†	90.024	180.354	7484.06	9911.94	-9692.28	-2117.22	39°58'50.137"N	104°45'59.598"W	0.00		
17716.00†	90.024	180.354	7484.02	10010.56	-9792.28	-2117.84	39°58'49.149"N	104°45'59.606"W	0.00		
17816.00†	90.024	180.354	7483.98	10109.18	-9892.28	-2118.46	39°58'48.160"N	104°45'59.613"W	0.00		
17916.00†	90.024	180.354	7483.93	10207.79	-9992.28	-2119.07	39°58'47.172"N	104°45'59.621"W	0.00		
18016.00†	90.024	180.354	7483.89	10306.41	-10092.28	-2119.69	39°58'46.184"N	104°45'59.629"W	0.00		
18116.00†	90.024	180.354	7483.85	10405.03	-10192.27	-2120.31	39°58'45.196"N	104°45'59.637"W	0.00		
18216.00†	90.024	180.354	7483.81	10503.64	-10292.27	-2120.93	39°58'44.208"N	104°45'59.645"W	0.00		
18316.00†	90.024	180.354	7483.77	10602.26	-10392.27	-2121.55	39°58'43.219"N	104°45'59.653"W	0.00		
18416.00†	90.024	180.354	7483.72	10700.88	-10492.27	-2122.16	39°58'42.231"N	104°45'59.660"W	0.00		
18516.00†	90.024	180.354	7483.68	10799.49	-10592.27	-2122.78	39°58'41.243"N	104°45'59.668"W	0.00		
18616.00†	90.024	180.354	7483.64	10898.11	-10692.27	-2123.40	39°58'40.255"N	104°45'59.676"W	0.00		
18716.00†	90.024	180.354	7483.60	10996.72	-10792.26	-2124.02	39°58'39.266"N	104°45'59.684"W	0.00		
18816.00†	90.024	180.354	7483.56	11095.34	-10892.26	-2124.63	39°58'38.278"N	104°45'59.692"W	0.00		
18916.00†	90.024	180.354	7483.52	11193.96	-10992.26	-2125.25	39°58'37.290"N	104°45'59.700"W	0.00		
19016.00†	90.024	180.354	7483.47	11292.57	-11092.26	-2125.87	39°58'36.302"N	104°45'59.707"W	0.00		
19116.00†	90.024	180.354	7483.43	11391.19	-11192.26	-2126.49	39°58'35.314"N	104°45'59.715"W	0.00		
19216.00†	90.024	180.354	7483.39	11489.81	-11292.25	-2127.11	39°58'34.325"N	104°45'59.723"W	0.00		
19316.00†	90.024	180.354	7483.35	11588.42	-11392.25	-2127.72	39°58'33.337"N	104°45'59.731"W	0.00		
19416.00†	90.024	180.354	7483.31	11687.04	-11492.25	-2128.34	39°58'32.349"N	104°45'59.739"W	0.00		
19516.00†	90.024	180.354	7483.26	11785.65	-11592.25	-2128.96	39°58'31.361"N	104°45'59.746"W	0.00		
19616.00†	90.024	180.354	7483.22	11884.27	-11692.25	-2129.58	39°58'30.373"N	104°45'59.754"W	0.00		
19716.00†	90.024	180.354	7483.18	11982.89	-11792.24	-2130.19	39°58'29.384"N	104°45'59.762"W	0.00		
19816.00†	90.024	180.354	7483.14	12081.50	-11892.24	-2130.81	39°58'28.396"N	104°45'59.770"W	0.00		
19916.00†	90.024	180.354	7483.10	12180.12	-11992.24	-2131.43	39°58'27.408"N	104°45'59.778"W	0.00		
20016.00†	90.024	180.354	7483.06	12278.74	-12092.24	-2132.05	39°58'26.420"N	104°45'59.786"W	0.00		
20116.00†	90.024	180.354	7483.01	12377.35	-12192.24	-2132.67	39°58'25.431"N	104°45'59.793"W	0.00		
20149.14	90.024	180.354	7483.00 ²	12410.03	-12225.37	-2132.87	39°58'25.104"N	104°45'59.796"W	0.00	End of Tangent	



Planned Wellpath Report

HOMESTEAD 6 (REV-A.0) PWP

Page 9 of 10



REFERENCE WELLPATH IDENTIFICATION			
Operator	VERDAD OIL & GAS CORPORATION	Slot	SLOT#06 HOMESTEAD 6 (2444'FSL & 1438'FEL,SEC.34)
Area	COLORADO	Well	HOMESTEAD 6
Field	WELD COUNTY (NAD83/TN)	Wellbore	HOMESTEAD 6 PWB
Facility	SEC.34-T1N-R66W		

TARGETS									
Name	MD [ft]	TVD [ft]	North [ft]	East [ft]	Grid East [US ft]	Grid North [US ft]	Latitude	Longitude	Shape
HOMESTEAD 1 SEC 34-T1N-R66W		-1.00	-3.64	-78.44	3207491.08	1246332.57	40°00'25.884"N	104°45'33.408"W	polygon
HOMESTEAD 1 SEC.10-T1S-R66W		-1.00	-3.64	-78.44	3207491.08	1246332.57	40°00'25.884"N	104°45'33.408"W	polygon
HOMESTEAD 1 SEC.3-T1S-R66W		-1.00	-3.64	-78.44	3207491.08	1246332.57	40°00'25.884"N	104°45'33.408"W	polygon
2) HOMESTEAD 6 BHL ON PLAT, REV-1 (460'FSL & 1228'FWL, SEC.10)	20149.14	7483.00	-12225.37	-2132.87	3205538.91	1234094.55	39°58'25.104"N	104°45'59.796"W	point
1) HOMESTEAD 6 EP, REV-1 (2180'FSL & 1775'FWL, SEC.34)	8193.02	7488.00	-269.49	-2059.01	3205512.87	1246050.20	40°00'23.256"N	104°45'58.860"W	point
HOMESTEAD 1 SEC 34-T1N-R66W Hardline (460'Setback)		7599.00	-3.64	-78.44	3207491.08	1246332.57	40°00'25.884"N	104°45'33.408"W	polygon
HOMESTEAD 1 SEC.10-T1S-R66W Hardline (460'Setback)		7599.00	-3.64	-78.44	3207491.08	1246332.57	40°00'25.884"N	104°45'33.408"W	polygon
HOMESTEAD 1 SEC.3-T1S-R66W Setback (460'Setback)		7599.00	-3.64	-78.44	3207491.08	1246332.57	40°00'25.884"N	104°45'33.408"W	polygon

SURVEY PROGRAM - Ref Wellbore: HOMESTEAD 6 PWB Ref Wellpath: HOMESTEAD 6 (REV-A.0) PWP				
Start MD [ft]	End MD [ft]	Positional Uncertainty Model	Log Name/Comment	Wellbore
16.00	20149.14	BHI NaviTrak (Rotating+Axial Corr)		HOMESTEAD 6 PWB



Planned Wellpath Report

HOMESTEAD 6 (REV-A.0) PWP

Page 10 of 10



REFERENCE WELLPATH IDENTIFICATION			
Operator	VERDAD OIL & GAS CORPORATION	Slot	SLOT#06 HOMESTEAD 6 (2444'FSL & 1438'FEL,SEC.34)
Area	COLORADO	Well	HOMESTEAD 6
Field	WELD COUNTY (NAD83/TN)	Wellbore	HOMESTEAD 6 PWB
Facility	SEC.34-T1N-R66W		

DESIGN COMMENTS				
MD [ft]	Inclination [°]	Azimuth [°]	TVD [ft]	Comment
16.00	0.000	279.313	16.00	Tie On
1600.00	0.000	279.313	1600.00	End of Tangent
2663.47	21.269	279.313	2639.21	End of Build
7260.42	21.269	279.313	6923.04	End of Tangent
8193.02	90.024	180.354	7488.00	End of 3D Arc
20149.14	90.024	180.354	7483.00	End of Tangent