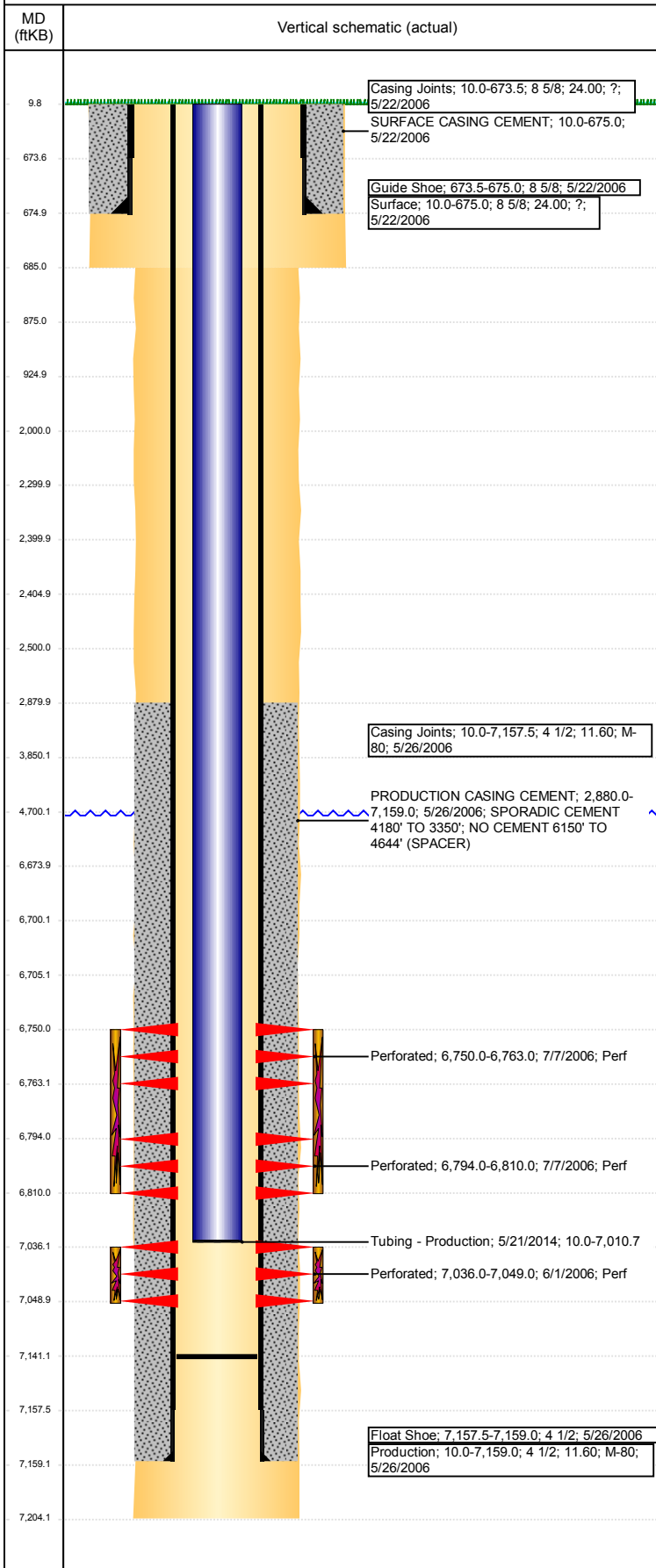


Wellbore Schematic Input Report

Well Name: MICK D18-25

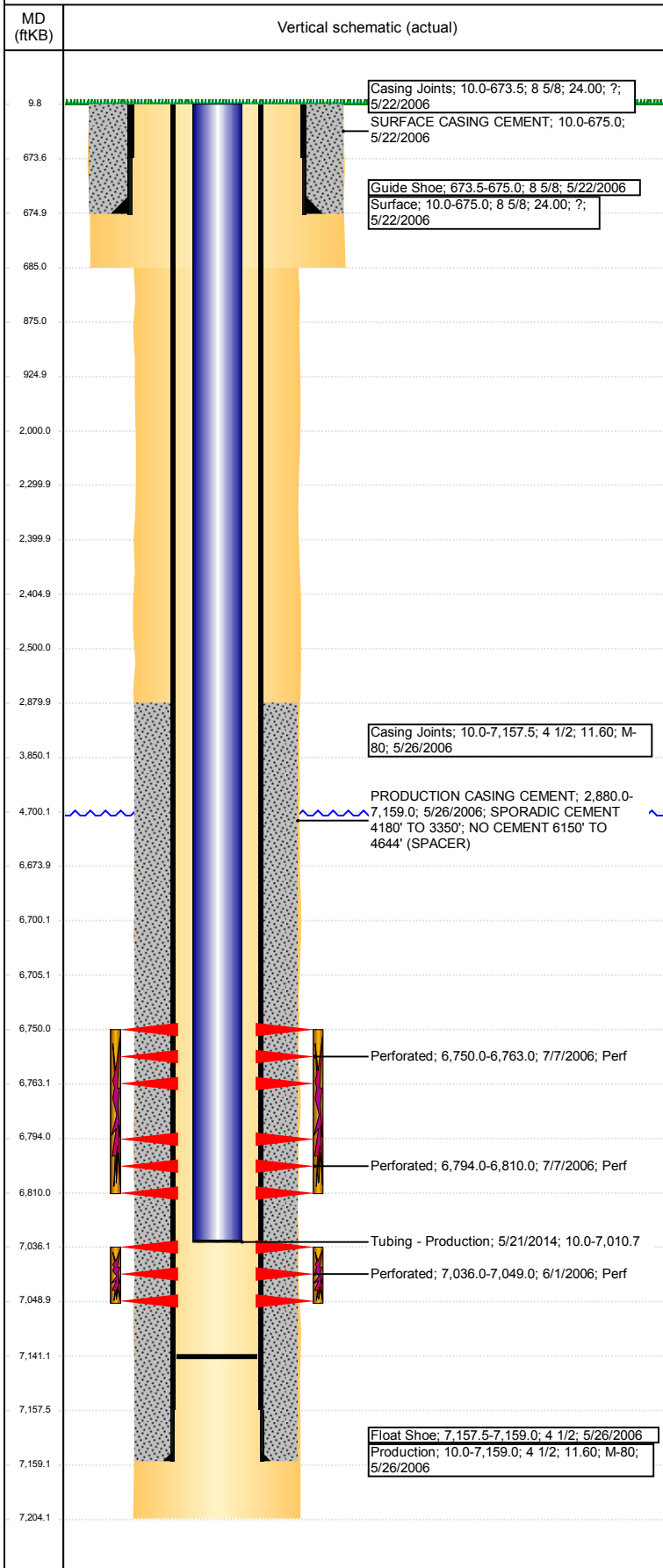
VERTICAL - ORIGINAL HOLE, 2/24/2018 5:37:57 PM



Well Header							
API 05-123-23749		Well Report Center 424404089		Well Configuration Type VERTICAL			
Original KB Elevation (ft) 4,806		KB - GL / MSL (ftKB) 10.00		Spud Date 5/21/2006		P & A Date	
Production Route C1-03			Well Production Status SI			SoRT Ignore No	
Directions To Well				Actual Latitude (°) 40.22116801		Actual Longitude (°) -104.59818253	
Comment							
Congressional Location							
Quarter 3 SE	Quarter 4 SW	Section 18	Township 3	Twnshp N/S Dir N	Range 64	Range E/W Dir W	
Rig Operator							
Rig Operator							
Plug Back Total Depths							
Date	Depth (ftKB)	Method		Com			
2/27/2007	7,141.0	TAG		CLEAN OUT TO LAND TUBING			
Wellbore Sections							
Section Des		Size (in)		Act Top, MD (ftKB)		Act Btm, MD (ftKB)	
SURFACE		12 1/4		10		685	
PRODUCTION		7 7/8		685		7,204	
Zone Statuses							
Zone Name		Status Date			Status		
NIOBRARA		2/16/2010			PR		
CODELL		5/9/2017			SI		
Casing Strings							
Surface, 675.0ftKB							
Casing Description Surface	Run Date 5/22/2006	OD (in) 8 5/8	Wt/Len (lb/ft) 24.00	Grade ?	Top, MD (ftKB) 10.0	MD (ftKB) 675.0	
Production, 7,159.0ftKB							
Casing Description Production	Run Date 5/26/2006	OD (in) 4 1/2	Wt/Len (lb/ft) 11.60	Grade M-80	Top, MD (ftKB) 10.0	MD (ftKB) 7,159.0	
Cement							
Des		Start Date		Top (ftKB)		Btm (ftKB)	
SURFACE CASING CEMENT		5/22/2006		10.0		675.0	
PRODUCTION CASING CEMENT		5/26/2006		2,880.0		7,159.0	
Proposed Cement							
Des				Top (ftKB)		Btm (ftKB)	
Dump Bail				6,674.0		6,700.0	
Balance Plug				3,850.0		4,700.0	
Balance Plug				2,300.0		2,400.0	
Balance Plug				2,405.0		2,500.0	
Cement Squeeze				2,000.0		2,500.0	
Balance Plug				875.0		925.0	
Balance Plug				675.0		875.0	
Balance Plug				10.0		675.0	
Tubing Strings							
Tubing Description Tubing - Production	Run Date 5/21/2014	String... 2 3/8	ID (in) 2.00	Wt (lb/ft) 4.70	Grade J-55	Len (ft) 7,000.70	Set De...
Tubing Components							
Item Des	OD (in)	Wt (lb/ft)	Grade	Jts	Len (ft)	Btm (ftKB)	Btm (TVD) (ftKB)
Tubing	2 3/8	4.70	J-55	223	6,999.20	7,009.2	
Pump Seating Nipple	2 3/8	1.10	X	1	1.10	7,010.3	
Notched collar	2 3/8	0.00	X	1	0.40	7,010.7	
Other In Hole							
Run Date	Des			OD (in)	Top (ftKB)	Btm (ftKB)	
Proposed Other In Hole							
Des			OD (in)		Top (ftKB)	Btm (ftKB)	
Cast Iron Bridge Plug			4		6,700.0	6,705.0	
Cement Retainer			4		2,400.0	2,405.0	

Well Name: MICK D18-25

VERTICAL - ORIGINAL HOLE, 2/24/2018 5:37:58 PM



Logs			
Date	Type	Top, MD (ftKB)	Btm, MD (ftKB)
5/26/2006	COMPENSATED DENSITY	2,950.0	7,173.0
5/26/2006	INDUCTION	675.0	7,193.0
6/1/2006	CBL/CCL/GR	2,707.0	5,021.0
6/1/2006	CBL/CCL/GR	4,985.0	7,157.0
11/7/2013	GYRO	0.0	6,950.0

Perforation Data				
Linked Zone	Sum of Entered Shot Total	Top (ftKB)	Btm (ftKB)	Date
NIOBRARA, ORIGINAL HOLE	78	6,750.00	6,763.00	7/7/2006
NIOBRARA, ORIGINAL HOLE	96	6,794.00	6,810.00	7/7/2006
CODELL, ORIGINAL HOLE	52	7,036.00	7,049.00	6/1/2006
Total (Sum)	226			

Proposed Perforations				
Linked Zone	Sum of Entered Shot Total	Top Depth (ftKB)	Btm (ftKB)	Date
CODELL, ORIGINAL HOLE	0	2,500.00	2,500.00	2/6/2018
Total (Sum)	0			

Job Supply Amounts						
Supply Item Des	Type	Uni...	Job Category	Total ...	Total ...	Total ...