

**PROJECT DETAILS: Garfield County, CO**

Geodetic System: US State Plane 1983  
Datum: North American Datum 1983  
Ellipsoid: GRS 1980  
Zone: Colorado Central Zone  
System Datum: Mean Sea Level

**WELL DETAILS: CC 0697-04-10E**

+N/-S 0.0 +E/-W 0.0 Northing 1639366.98 Easting 2233619.78 8609.0 Latitude 39.557414 Longitude -108.218862

Project: Garfield County, CO  
Site: CC 604-41-32 Pad  
Well: CC 0697-04-10E  
Wellbore: Wellbore #1  
Design: Design #1  
Latitude: 39.557414  
Longitude: -108.218862  
Ground Level: 8609.0  
well @ 8633.0usft (24' RKB)

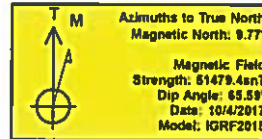


DIRECTIONAL DRILLING



**FORMATION TOP DETAILS**

TVDPath	MDPath	Formation
4723.0	4737.1	Wasatch 'G' Sand
6423.0	6442.5	Ohio Creek
6573.0	6593.0	Williams Fork
7373.0	7395.2	TOG
9023.0	9046.2	Cameo
9253.0	9275.2	Base Cameo Coal
9273.0	9295.2	Rollins
9473.0	9495.2	Cozette
9723.0	9749.2	Corcoran



**REFERENCE INFORMATION**

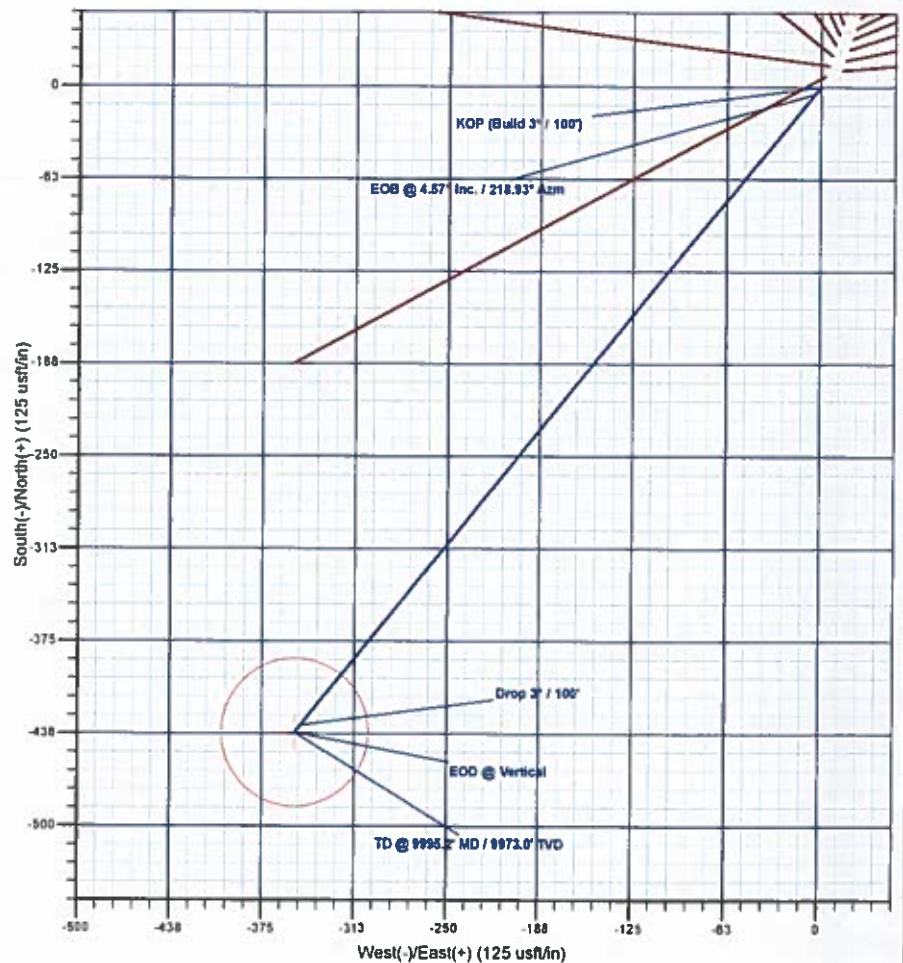
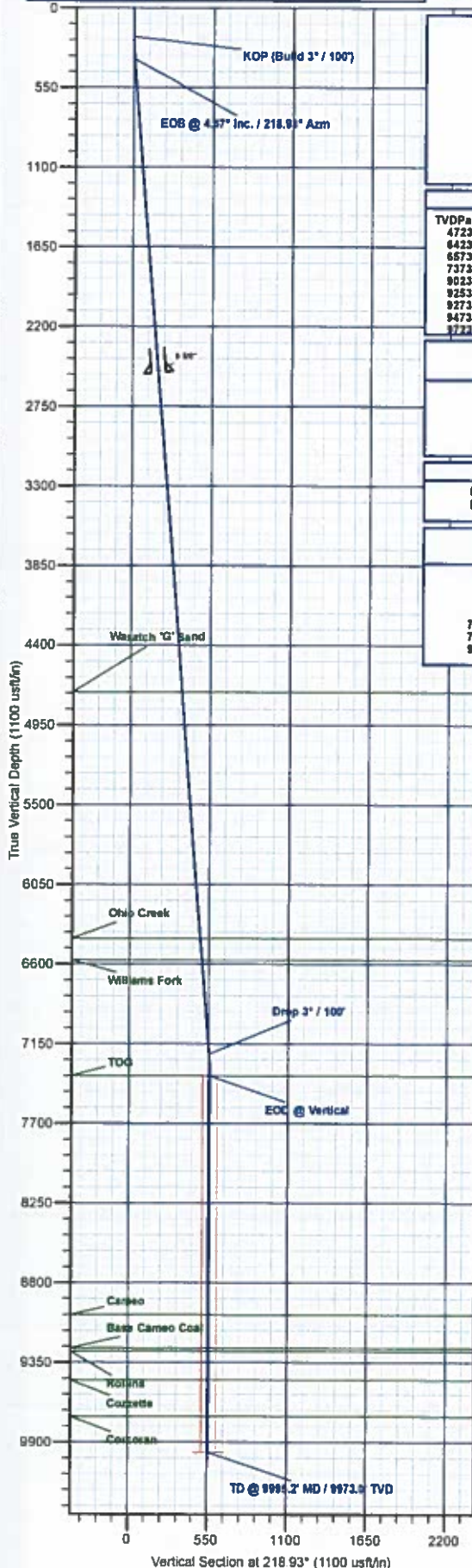
Co-ordinate (N/E) Reference: Well CC 0697-04-10E, True North  
Vertical (TVD) Reference: well @ 8633.0usft (24' RKB)  
Section (VS) Reference: Slot = (0.0N, 0.0E)  
Measured Depth Reference: well @ 8633.0usft (24' RKB)  
Calculation Method: Minimum Curvature

**DESIGN TARGET DETAILS**

Name	TVD	+N/-S	+E/-W	Northing	Easting	Latitude	Longitude
PBHL - CC 0697-04-10E	9973.0	-436.7	-352.7	1639861.01	2233154.14	39.556215	-108.220113

**SECTION DETAILS**

MD	Inc	Azi	TVD	+N/-S	+E/-W	Dleg	TFac	VSect	Annotation
0.0	0.00	0.00	0.0	0.0	0.0	0.00	0.00	0.0	KOP (Build 3" / 100')
209.0	0.00	0.00	200.0	0.0	0.0	0.00	0.00	0.0	EOB @ 4.57° Inc. / 218.93° Azm
352.4	4.57	218.93	352.2	-4.7	-3.8	3.00	218.93	6.1	Drop 3" / 100'
7242.9	4.57	218.93	7220.8	-432.0	-348.9	0.00	0.00	555.3	EOB @ Vertical
7395.2	0.00	0.00	7373.0	-436.7	-352.7	3.00	180.00	561.4	TD @ 9995.2' MD / 9973.0' TVD
9995.2	0.00	0.00	9973.0	-436.7	-352.7	0.00	0.00	561.4	



Plan: Design #1 (CC 0697-04-10E/Wellbore #1)

Created By: Will Jircik

Date: 15:44, October 04 2017



# **Laramie Energy, LLC**

**Garfield County, CO**

**CC 604-41-32 Pad**

**CC 0697-04-10E**

**Wellbore #1**

**Plan: Design #1**

## **QES Well Planning Report**

**04 October, 2017**





# Well Planning Report



<b>Database:</b>	EDM 5000.1 Single User Db	<b>Local Co-ordinate Reference:</b>	Well CC 0697-04-10E
<b>Company:</b>	Laramie Energy, LLC	<b>TVD Reference:</b>	well @ 8633.0usft (24' RKB)
<b>Project:</b>	Garfield County, CO	<b>MD Reference:</b>	well @ 8633.0usft (24' RKB)
<b>Site:</b>	CC 604-41-32 Pad	<b>North Reference:</b>	True
<b>Well:</b>	CC 0697-04-10E	<b>Survey Calculation Method:</b>	Minimum Curvature
<b>Wellbore:</b>	Wellbore #1		
<b>Design:</b>	Design #1		

<b>Project</b>	Garfield County, CO		
<b>Map System:</b>	US State Plane 1983	<b>System Datum:</b>	Mean Sea Level
<b>Geo Datum:</b>	North American Datum 1983		
<b>Map Zone:</b>	Colorado Central Zone		

<b>Site</b>	CC 604-41-32 Pad		
<b>Site Position:</b>		<b>Northing:</b>	1,839,464.67 usft
<b>From:</b>	Lat/Long	<b>Easting:</b>	2,233,548.14 usft
<b>Position Uncertainty:</b>	0.0 usft	<b>Slot Radius:</b>	13-3/16 "
		<b>Latitude:</b>	39 557630
		<b>Longitude:</b>	-108 218770
		<b>Grid Convergence:</b>	-1.71 °

<b>Well</b>	CC 0697-04-10E		
<b>Well Position</b>	+N-S	-78.5 usft	<b>Northing:</b> 1,839,386.98 usft
	+E-W	-26.0 usft	<b>Easting:</b> 2,233,519.78 usft
<b>Position Uncertainty</b>	0.0 usft	<b>Wellhead Elevation:</b>	<b>Latitude:</b> 39 557414
			<b>Longitude:</b> -108 218862
			<b>Ground Level:</b> 8,609.0 usft

<b>Wellbore</b>	Wellbore #1				
<b>Magnetics</b>	<b>Model Name</b>	<b>Sample Date</b>	<b>Declination (°)</b>	<b>Dip Angle (°)</b>	<b>Field Strength (nT)</b>
	IGRF2015	10/4/2017	9.77	65.59	51,479.43421649

<b>Design</b>	Design #1			
<b>Audit Notes:</b>				
<b>Version:</b>	<b>Phase:</b>	PLAN	<b>Tie On Depth:</b>	0.0
<b>Vertical Section:</b>	<b>Depth From (TVD) (usft)</b>	<b>+N-S (usft)</b>	<b>+E-W (usft)</b>	<b>Direction (°)</b>
	0.0	0.0	0.0	218.93

<b>Plan Sections</b>										
Measured Depth (usft)	Inclination (°)	Azimuth (°)	Vertical Depth (usft)	+N-S (usft)	+E-W (usft)	Dogleg Rate (°/100usft)	Build Rate (°/100usft)	Turn Rate (°/100usft)	TFO (°)	Target
0.0	0.00	0.00	0.0	0.0	0.0	0.00	0.00	0.00	0.00	
200.0	0.00	0.00	200.0	0.0	0.0	0.00	0.00	0.00	0.00	
352.4	4.57	218.93	352.2	-4.7	-3.8	3.00	3.00	0.00	218.93	
7,242.9	4.57	218.93	7,220.8	-432.0	-348.9	0.00	0.00	0.00	0.00	
7,395.2	0.00	0.00	7,373.0	-436.7	-352.7	3.00	-3.00	0.00	180.00	
9,995.2	0.00	0.00	9,973.0	-436.7	-352.7	0.00	0.00	0.00	0.00	PBHL - CC 0697-04-1





## Well Planning Report



Database:	EDM 5000.1 Single User Db	Local Co-ordinate Reference:	Well CC 0897-04-10E
Company:	Laramie Energy, LLC	TVD Reference:	well @ 8633.0usft (24' RKB)
Project:	Garfield County, CO	MD Reference:	well @ 8633.0usft (24' RKB)
Site:	CC 804-41-32 Pad	North Reference:	True
Well:	CC 0897-04-10E	Survey Calculation Method:	Minimum Curvature
Wellbore:	Wellbore #1		
Design:	Design #1		

## Planned Survey

Measured Depth (usft)	Inclination (°)	Azimuth (°)	Vertical Depth (usft)	+N/-S (usft)	+E/-W (usft)	Vertical Section (usft)	Dogleg Rate (°/100usft)	Build Rate (°/100usft)	Turn Rate (°/100usft)
0.0	0.00	0.00	0.0	0.0	0.0	0.0	0.00	0.00	0.00
100.0	0.00	0.00	100.0	0.0	0.0	0.0	0.00	0.00	0.00
KOP (Build 3° / 100')									
200.0	0.00	0.00	200.0	0.0	0.0	0.0	0.00	0.00	0.00
300.0	3.00	218.93	300.0	-2.0	-1.6	2.6	3.00	3.00	0.00
EOB @ 4.57° Inc. / 218.93° Azm									
352.4	4.57	218.93	352.2	-4.7	-3.8	6.1	3.00	3.00	0.00
400.0	4.57	218.93	399.7	-7.7	-6.2	9.9	0.00	0.00	0.00
500.0	4.57	218.93	499.4	-13.9	-11.2	17.8	0.00	0.00	0.00
600.0	4.57	218.93	599.1	-20.1	-16.2	25.8	0.00	0.00	0.00
700.0	4.57	218.93	698.7	-26.3	-21.2	33.8	0.00	0.00	0.00
800.0	4.57	218.93	798.4	-32.5	-26.2	41.8	0.00	0.00	0.00
900.0	4.57	218.93	898.1	-38.7	-31.2	49.7	0.00	0.00	0.00
1,000.0	4.57	218.93	997.8	-44.9	-36.3	57.7	0.00	0.00	0.00
1,100.0	4.57	218.93	1,097.5	-51.1	-41.3	65.7	0.00	0.00	0.00
1,200.0	4.57	218.93	1,197.1	-57.3	-46.3	73.6	0.00	0.00	0.00
1,300.0	4.57	218.93	1,296.8	-63.5	-51.3	81.6	0.00	0.00	0.00
1,400.0	4.57	218.93	1,396.5	-69.7	-56.3	89.6	0.00	0.00	0.00
1,500.0	4.57	218.93	1,496.2	-75.9	-61.3	97.5	0.00	0.00	0.00
1,600.0	4.57	218.93	1,595.9	-82.1	-66.3	105.5	0.00	0.00	0.00
1,700.0	4.57	218.93	1,695.6	-88.3	-71.3	113.5	0.00	0.00	0.00
1,800.0	4.57	218.93	1,795.2	-94.5	-76.3	121.5	0.00	0.00	0.00
1,900.0	4.57	218.93	1,894.9	-100.7	-81.3	129.4	0.00	0.00	0.00
2,000.0	4.57	218.93	1,994.6	-106.9	-86.3	137.4	0.00	0.00	0.00
2,100.0	4.57	218.93	2,094.3	-113.1	-91.3	145.4	0.00	0.00	0.00
2,200.0	4.57	218.93	2,194.0	-119.3	-96.4	153.3	0.00	0.00	0.00
2,300.0	4.57	218.93	2,293.6	-125.5	-101.4	161.3	0.00	0.00	0.00
2,400.0	4.57	218.93	2,393.3	-131.7	-106.4	169.3	0.00	0.00	0.00
2,500.0	4.57	218.93	2,493.0	-137.9	-111.4	177.3	0.00	0.00	0.00
9 5/8"									
2,524.0	4.57	218.93	2,516.9	-139.4	-112.6	179.2	0.00	0.00	0.00
2,600.0	4.57	218.93	2,592.7	-144.1	-116.4	185.2	0.00	0.00	0.00
2,700.0	4.57	218.93	2,692.4	-150.3	-121.4	193.2	0.00	0.00	0.00
2,800.0	4.57	218.93	2,792.1	-156.5	-126.4	201.2	0.00	0.00	0.00
2,900.0	4.57	218.93	2,891.7	-162.7	-131.4	209.1	0.00	0.00	0.00
3,000.0	4.57	218.93	2,991.4	-168.9	-136.4	217.1	0.00	0.00	0.00
3,100.0	4.57	218.93	3,091.1	-175.1	-141.4	225.1	0.00	0.00	0.00
3,200.0	4.57	218.93	3,190.8	-181.3	-146.4	233.1	0.00	0.00	0.00
3,300.0	4.57	218.93	3,290.5	-187.5	-151.4	241.0	0.00	0.00	0.00
3,400.0	4.57	218.93	3,390.1	-193.7	-156.5	249.0	0.00	0.00	0.00
3,500.0	4.57	218.93	3,489.8	-199.9	-161.5	257.0	0.00	0.00	0.00
3,600.0	4.57	218.93	3,589.5	-206.1	-166.5	264.9	0.00	0.00	0.00
3,700.0	4.57	218.93	3,689.2	-212.3	-171.5	272.9	0.00	0.00	0.00
3,800.0	4.57	218.93	3,788.9	-218.5	-176.5	280.9	0.00	0.00	0.00
3,900.0	4.57	218.93	3,888.6	-224.7	-181.5	288.8	0.00	0.00	0.00
4,000.0	4.57	218.93	3,988.2	-230.9	-186.5	296.8	0.00	0.00	0.00
4,100.0	4.57	218.93	4,087.9	-237.1	-191.5	304.8	0.00	0.00	0.00
4,200.0	4.57	218.93	4,187.6	-243.3	-196.5	312.8	0.00	0.00	0.00
4,300.0	4.57	218.93	4,287.3	-249.5	-201.5	320.7	0.00	0.00	0.00
4,400.0	4.57	218.93	4,387.0	-255.7	-206.5	328.7	0.00	0.00	0.00
4,500.0	4.57	218.93	4,486.6	-261.9	-211.5	336.7	0.00	0.00	0.00
4,600.0	4.57	218.93	4,586.3	-268.1	-216.6	344.6	0.00	0.00	0.00
4,700.0	4.57	218.93	4,686.0	-274.3	-221.6	352.6	0.00	0.00	0.00



# Well Planning Report



<b>Database:</b>	EDM 5000 1 Single User Db	<b>Local Co-ordinate Reference:</b>	Well CC 0697-04-10E
<b>Company:</b>	Laramie Energy, LLC	<b>TVD Reference:</b>	well @ 8633.0usft (24' RKB)
<b>Project:</b>	Garfield County, CO	<b>MD Reference:</b>	well @ 8633.0usft (24' RKB)
<b>Site:</b>	CC 604-41-32 Pad	<b>North Reference:</b>	True
<b>Well:</b>	CC 0697-04-10E	<b>Survey Calculation Method:</b>	Minimum Curvature
<b>Wellbore:</b>	Wellbore #1		
<b>Design:</b>	Design #1		

## Planned Survey

Measured Depth (usft)	Inclination (°)	Azimuth (°)	Vertical Depth (usft)	+N/-S (usft)	+E/-W (usft)	Vertical Section (usft)	Dogleg Rate (°/100usft)	Build Rate (°/100usft)	Turn Rate (°/100usft)
<b>Wasatch 'G' Sand</b>									
4,737.1	4.57	218.93	4,723.0	-276.6	-223.4	355.6	0.00	0.00	0.00
4,800.0	4.57	218.93	4,785.7	-280.5	-226.6	360.6	0.00	0.00	0.00
4,900.0	4.57	218.93	4,885.4	-286.7	-231.6	368.6	0.00	0.00	0.00
5,000.0	4.57	218.93	4,985.1	-292.9	-236.6	376.5	0.00	0.00	0.00
5,100.0	4.57	218.93	5,084.7	-299.1	-241.6	384.5	0.00	0.00	0.00
5,200.0	4.57	218.93	5,184.4	-305.3	-246.6	392.5	0.00	0.00	0.00
5,300.0	4.57	218.93	5,284.1	-311.5	-251.6	400.4	0.00	0.00	0.00
5,400.0	4.57	218.93	5,383.8	-317.7	-256.6	408.4	0.00	0.00	0.00
5,500.0	4.57	218.93	5,483.5	-323.9	-261.6	416.4	0.00	0.00	0.00
5,600.0	4.57	218.93	5,583.1	-330.1	-266.6	424.4	0.00	0.00	0.00
5,700.0	4.57	218.93	5,682.8	-336.3	-271.6	432.3	0.00	0.00	0.00
5,800.0	4.57	218.93	5,782.5	-342.5	-276.7	440.3	0.00	0.00	0.00
5,900.0	4.57	218.93	5,882.2	-348.7	-281.7	448.3	0.00	0.00	0.00
6,000.0	4.57	218.93	5,981.9	-354.9	-286.7	456.2	0.00	0.00	0.00
6,100.0	4.57	218.93	6,081.6	-361.1	-291.7	464.2	0.00	0.00	0.00
6,200.0	4.57	218.93	6,181.2	-367.3	-296.7	472.2	0.00	0.00	0.00
6,300.0	4.57	218.93	6,280.9	-373.5	-301.7	480.1	0.00	0.00	0.00
6,400.0	4.57	218.93	6,380.6	-379.7	-306.7	488.1	0.00	0.00	0.00
<b>Ohio Creek</b>									
6,442.5	4.57	218.93	6,423.0	-382.4	-308.8	491.5	0.00	0.00	0.00
6,500.0	4.57	218.93	6,480.3	-385.9	-311.7	496.1	0.00	0.00	0.00
<b>Williams Fork</b>									
6,593.0	4.57	218.93	6,573.0	-391.7	-316.4	503.5	0.00	0.00	0.00
6,600.0	4.57	218.93	6,580.0	-392.1	-316.7	504.1	0.00	0.00	0.00
6,700.0	4.57	218.93	6,679.6	-398.3	-321.7	512.0	0.00	0.00	0.00
6,800.0	4.57	218.93	6,779.3	-404.5	-326.7	520.0	0.00	0.00	0.00
6,900.0	4.57	218.93	6,879.0	-410.7	-331.7	528.0	0.00	0.00	0.00
7,000.0	4.57	218.93	6,978.7	-416.9	-336.7	535.9	0.00	0.00	0.00
7,100.0	4.57	218.93	7,078.4	-423.1	-341.8	543.9	0.00	0.00	0.00
7,200.0	4.57	218.93	7,178.1	-429.3	-346.8	551.9	0.00	0.00	0.00
<b>Drop 3° / 100'</b>									
7,242.9	4.57	218.93	7,220.8	-432.0	-348.9	555.3	0.00	0.00	0.00
7,300.0	2.86	218.93	7,277.8	-434.9	-351.2	559.0	3.00	-3.00	0.00
<b>EOD @ Vertical - TOG</b>									
7,395.2	0.00	0.00	7,373.0	-436.7	-352.7	561.4	3.00	-3.00	0.00
7,400.0	0.00	0.00	7,377.8	-436.7	-352.7	561.4	0.00	0.00	0.00
7,500.0	0.00	0.00	7,477.8	-436.7	-352.7	561.4	0.00	0.00	0.00
7,600.0	0.00	0.00	7,577.8	-436.7	-352.7	561.4	0.00	0.00	0.00
7,700.0	0.00	0.00	7,677.8	-436.7	-352.7	561.4	0.00	0.00	0.00
7,800.0	0.00	0.00	7,777.8	-436.7	-352.7	561.4	0.00	0.00	0.00
7,900.0	0.00	0.00	7,877.8	-436.7	-352.7	561.4	0.00	0.00	0.00
8,000.0	0.00	0.00	7,977.8	-436.7	-352.7	561.4	0.00	0.00	0.00
8,100.0	0.00	0.00	8,077.8	-436.7	-352.7	561.4	0.00	0.00	0.00
8,200.0	0.00	0.00	8,177.8	-436.7	-352.7	561.4	0.00	0.00	0.00
8,300.0	0.00	0.00	8,277.8	-436.7	-352.7	561.4	0.00	0.00	0.00
8,400.0	0.00	0.00	8,377.8	-436.7	-352.7	561.4	0.00	0.00	0.00
8,500.0	0.00	0.00	8,477.8	-436.7	-352.7	561.4	0.00	0.00	0.00
8,600.0	0.00	0.00	8,577.8	-436.7	-352.7	561.4	0.00	0.00	0.00
8,700.0	0.00	0.00	8,677.8	-436.7	-352.7	561.4	0.00	0.00	0.00
8,800.0	0.00	0.00	8,777.8	-436.7	-352.7	561.4	0.00	0.00	0.00
8,900.0	0.00	0.00	8,877.8	-436.7	-352.7	561.4	0.00	0.00	0.00
9,000.0	0.00	0.00	8,977.8	-436.7	-352.7	561.4	0.00	0.00	0.00



# Well Planning Report



<b>Database:</b>	EDM 5000.1 Single User Db	<b>Local Co-ordinate Reference:</b>	Well CC 0697-04-10E
<b>Company:</b>	Laramie Energy, LLC	<b>TVD Reference:</b>	well @ 8633.0usft (24' RKB)
<b>Project:</b>	Garfield County, CO	<b>MD Reference:</b>	well @ 8633.0usft (24' RKB)
<b>Site:</b>	CC 604-41-32 Pad	<b>North Reference:</b>	True
<b>Well:</b>	CC 0697-04-10E	<b>Survey Calculation Method:</b>	Minimum Curvature
<b>Wellbore:</b>	Wellbore #1		
<b>Design:</b>	Design #1		

Planned Survey									
Measured Depth (usft)	Inclination (°)	Azimuth (°)	Vertical Depth (usft)	+N/-S (usft)	+E/-W (usft)	Vertical Section (usft)	Dogleg Rate (°/100usft)	Build Rate (°/100usft)	Turn Rate (°/100usft)
<b>Cameo</b>									
9,045.2	0.00	0.00	9,023.0	-436.7	-352.7	561.4	0.00	0.00	0.00
9,100.0	0.00	0.00	9,077.8	-436.7	-352.7	561.4	0.00	0.00	0.00
9,200.0	0.00	0.00	9,177.8	-436.7	-352.7	561.4	0.00	0.00	0.00
<b>Base Cameo Coal</b>									
9,275.2	0.00	0.00	9,253.0	-436.7	-352.7	561.4	0.00	0.00	0.00
<b>Rollins</b>									
9,295.2	0.00	0.00	9,273.0	-436.7	-352.7	561.4	0.00	0.00	0.00
9,300.0	0.00	0.00	9,277.8	-436.7	-352.7	561.4	0.00	0.00	0.00
9,400.0	0.00	0.00	9,377.8	-436.7	-352.7	561.4	0.00	0.00	0.00
<b>Cozzette</b>									
9,485.2	0.00	0.00	9,473.0	-436.7	-352.7	561.4	0.00	0.00	0.00
9,500.0	0.00	0.00	9,477.8	-436.7	-352.7	561.4	0.00	0.00	0.00
9,600.0	0.00	0.00	9,577.8	-436.7	-352.7	561.4	0.00	0.00	0.00
9,700.0	0.00	0.00	9,677.8	-436.7	-352.7	561.4	0.00	0.00	0.00
<b>Corcoran</b>									
9,745.2	0.00	0.00	9,723.0	-436.7	-352.7	561.4	0.00	0.00	0.00
9,800.0	0.00	0.00	9,777.8	-436.7	-352.7	561.4	0.00	0.00	0.00
9,900.0	0.00	0.00	9,877.8	-436.7	-352.7	561.4	0.00	0.00	0.00
<b>TD @ 9995.2' MD / 9973.0' TVD</b>									
9,995.2	0.00	0.00	9,973.0	-436.7	-352.7	561.4	0.00	0.00	0.00

Design Targets									
Target Name	Dip Angle (°)	Dip Dir. (°)	TVD (usft)	+N/-S (usft)	+E/-W (usft)	Northing (usft)	Easting (usft)	Latitude	Longitude
- hit/miss target									
- Shape									
PBHL - CC 0697-04-10E	0.00	0.00	9,973.0	-436.7	-352.7	1,638,961.01	2,233,154.14	39.556215	-108.220113
- plan hits target center									
- Circle (radius 50.0)									

Casing Points				
Measured Depth (usft)	Vertical Depth (usft)	Name	Casing Diameter (")	Hole Diameter (")
2,524.0	2,516.9	9 5/8"	9-5/8	14-3/4



# Well Planning Report



Database:	EDM 5000 1 Single User Db	Local Co-ordinate Reference:	Well CC 0697-04-10E
Company:	Laramie Energy, LLC	TVD Reference:	well @ 8633.0usft (24' RKB)
Project:	Garfield County, CO	MD Reference:	well @ 8633.0usft (24' RKB)
Site:	CC 604-41-32 Pad	North Reference:	True
Well:	CC 0697-04-10E	Survey Calculation Method:	Minimum Curvature
Wellbore:	Wellbore #1		
Design:	Design #1		

Formations					
Measured Depth (usft)	Vertical Depth (usft)	Name	Lithology	Dip (")	Dip Direction (")
4,737.1	4,723.0	Wasatch 'G' Sand			
6,442.5	6,423.0	Ohio Creek			
6,593.0	6,573.0	Williams Fork			
7,395.2	7,373.0	TOG			
9,045.2	9,023.0	Cameo			
9,275.2	9,253.0	Base Cameo Coal			
9,295.2	9,273.0	Rollins			
9,495.2	9,473.0	Cozzette			
9,745.2	9,723.0	Corcoran			

Plan Annotations				
Measured Depth (usft)	Vertical Depth (usft)	Local Coordinates		Comment
		+N/-S (usft)	+E/-W (usft)	
200.0	200.0	0.0	0.0	KOP (Build 3" / 100')
352.4	352.2	-4.7	-3.8	EOB @ 4.57" Inc. / 218.93" Azm
7,242.9	7,220.8	-432.0	-348.9	Drop 3" / 100'
7,395.2	7,373.0	-436.7	-352.7	EOD @ Vertical
9,995.2	9,973.0	-436.7	-352.7	TD @ 9995.2' MD / 9973.0' TVD