

# PROJECT DETAILS: Garfield County, CO

Geodetic System: US State Plane 1983  
Datum: North American Datum 1983  
Ellipsoid: GRS 1980  
Zone: Colorado Central Zone  
System Datum: Mean Sea Level

# WELL DETAILS: CC Federal 0697-04-04E

+N/-S 0.0 +E/-W 0.0 Northing 1639429.51 Easting 2233538.44 8609.0 Latitude 39.567532 Longitude -108.218811

Project: Garfield County, CO  
Site: CC 604-41-32 Pad  
Well: CC Federal 0697-04-04E  
Wellbore: Wellbore #1  
Design: Design #1  
Latitude: 39.557532  
Longitude: -108.218811  
Ground Level: 8609.0  
well @ 8633.0usft (24' RKB)



DIRECTIONAL DRILLING

## REFERENCE INFORMATION

Co-ordinate (N/E) Reference: Well CC Federal 0697-04-04E, True North  
Vertical (TVD) Reference: well @ 8633.0usft (24' RKB)  
Section (VS) Reference: Slot - (0.0N, 0.0E)  
Measured Depth Reference: well @ 8633.0usft (24' RKB)  
Calculation Method: Minimum Curvature

## FORMATION TOP DETAILS

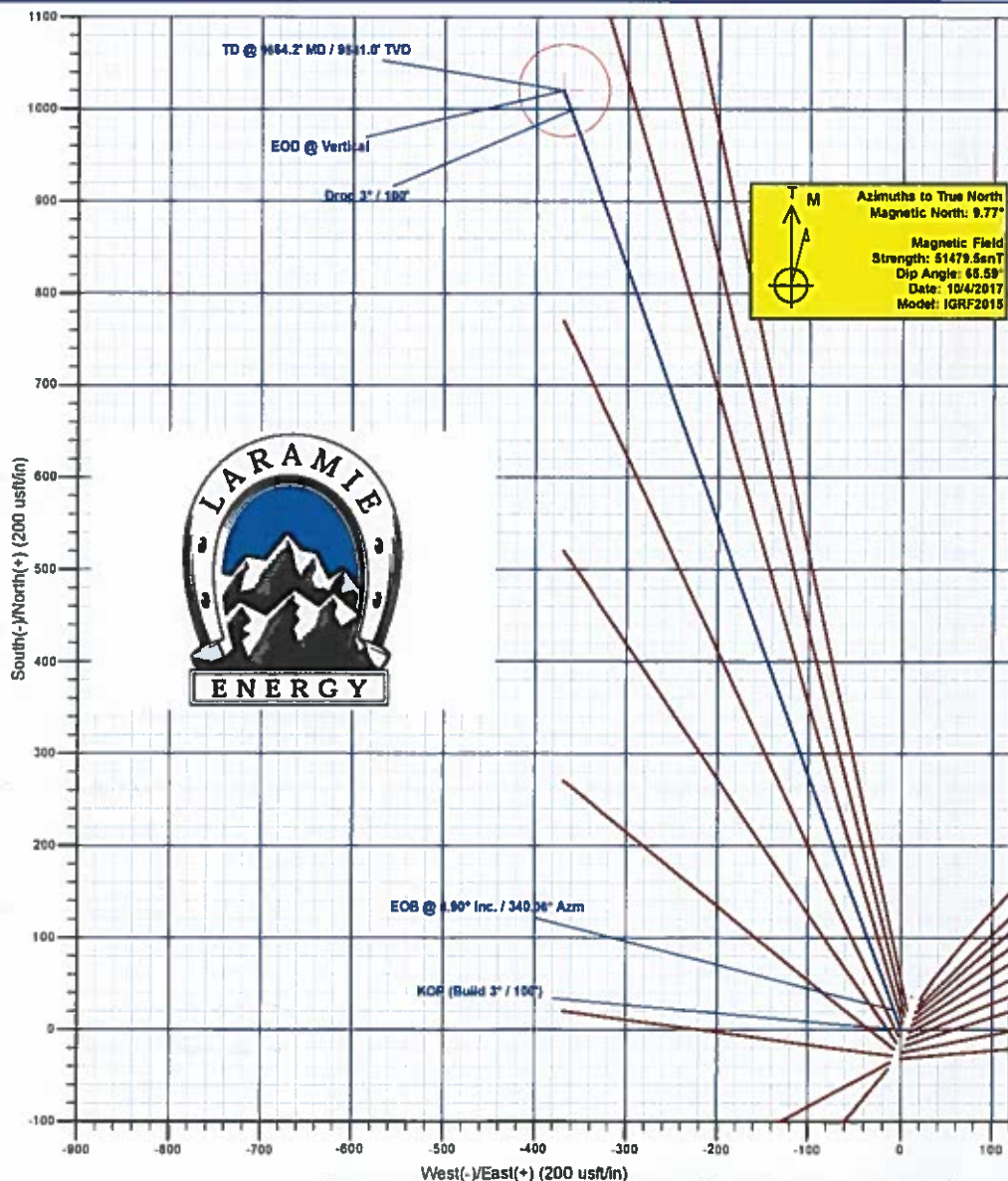
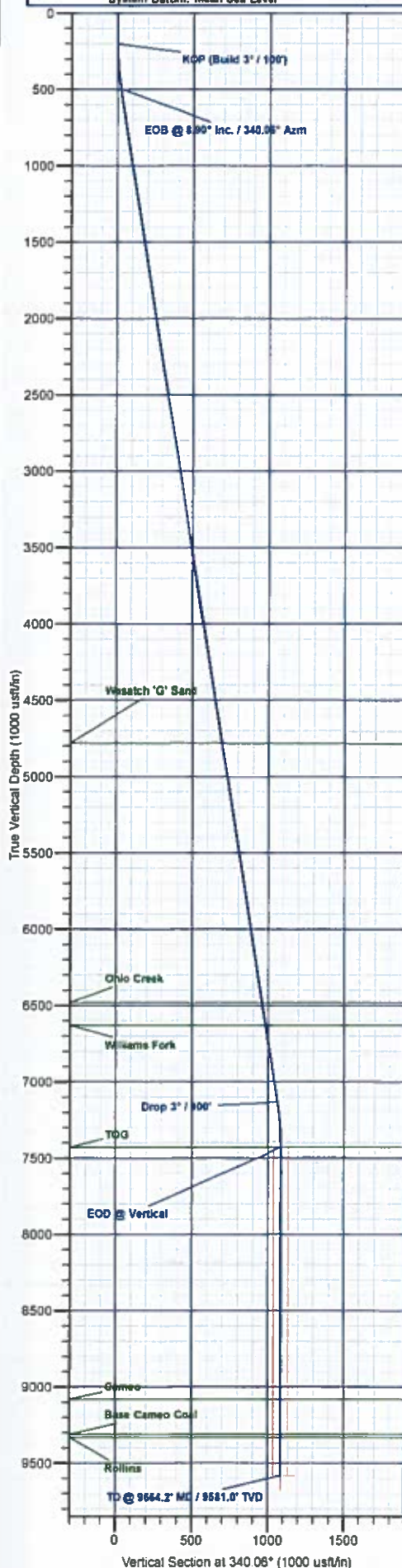
TVDPath	MDPath	Formation
4781.0	4834.4	Wasatch 'G' Sand
6461.0	6555.1	Ohio Creek
6631.0	6706.9	Williams Fork
7431.0	7514.2	TOG
8081.0	8164.2	Cameo
9311.0	9394.2	Base Cameo Coal
9331.0	9414.2	Rollins

## DESIGN TARGET DETAILS

Name	TVD	+N/-S	+E/-W	Northing	Easting	Latitude	Longitude
PBHL - CC Federal 0697-04-04E	9581.0	1020.3	-370.2	1640460.40	2233195.94	39.560333	-108.220124

## SECTION DETAILS

MD	Inc	Azi	TVD	+N/-S	+E/-W	Dieg	TFace	Vsect	Annotation
0.0	0.00	0.00	0.0	0.0	0.0	0.00	0.00	0.0	
200.0	0.00	0.00	200.0	0.0	0.0	0.00	0.00	0.0	
498.5	8.90	340.06	495.4	21.6	-7.8	3.00	340.06	23.0	KOP (Build 3' / 100')
7217.7	8.90	340.06	7135.6	988.7	-362.4	0.00	0.00	1062.4	EOB @ 8.90° Inc. / 340.06° Azm
7514.2	0.00	0.00	7431.0	1020.3	-370.2	0.00	180.00	1085.4	Drop 3' / 100'
9664.2	0.00	0.00	9581.0	1020.3	-370.2	0.00	0.00	1085.4	TD @ 9664.2' MD / 9581.0' TVD



Azimuths to True North  
 Magnetic North: 9.77°  
 Magnetic Field  
 Strength: 51479.5nT  
 Dip Angle: 65.59°  
 Date: 10/4/2017  
 Model: IGRF2015

Plan: Design #1 (CC Federal 0697-04-04E/Wellbore #1)

Created By: Will Jircik Date: 15:12, October 04 2017



## **Laramie Energy, LLC**

**Garfield County, CO**

**CC 604-41-32 Pad**

**CC Federal 0697-04-04E**

**Wellbore #1**

**Plan: Design #1**

## **QES Well Planning Report**

**04 October, 2017**





# Well Planning Report



<b>Database:</b>	EDM 5000.1 Single User Db	<b>Local Co-ordinate Reference:</b>	Well CC Federal 0697-04-04E
<b>Company:</b>	Laramie Energy, LLC	<b>TVD Reference:</b>	well @ 8633.0usft (24' RKB)
<b>Project:</b>	Garfield County, CO	<b>MD Reference:</b>	well @ 8633.0usft (24' RKB)
<b>Site:</b>	CC 604-41-32 Pad	<b>North Reference:</b>	True
<b>Well:</b>	CC Federal 0697-04-04E	<b>Survey Calculation Method:</b>	Minimum Curvature
<b>Wellbore:</b>	Wellbore #1		
<b>Design:</b>	Design #1		

<b>Project</b>	Garfield County, CO		
<b>Map System:</b>	US State Plane 1983	<b>System Datum:</b>	Mean Sea Level
<b>Geo Datum:</b>	North American Datum 1983		
<b>Map Zone:</b>	Colorado Central Zone		

<b>Site</b>	CC 604-41-32 Pad			
<b>Site Position:</b>		<b>Northing:</b>	1,839,464.67 usft	<b>Latitude:</b> 39.557630
<b>From:</b>	Lat/Long	<b>Easting:</b>	2,233,548.14 usft	<b>Longitude:</b> -108.218770
<b>Position Uncertainty:</b>	0.0 usft	<b>Slot Radius:</b>	13-3/16 "	<b>Grid Convergence:</b> -1.71 °

<b>Well</b>	CC Federal 0697-04-04E			
<b>Well Position</b>	+N/-S	-35.5 usft	<b>Northing:</b>	1,839,429.51 usft
	+E/-W	-11.6 usft	<b>Easting:</b>	2,233,535.44 usft
<b>Position Uncertainty</b>	0.0 usft	<b>Wellhead Elevation:</b>		<b>Ground Level:</b> 8,609.0 usft

<b>Wellbore</b>	Wellbore #1			
-----------------	-------------	--	--	--

Magnetics	Model Name	Sample Date	Declination (°)	Dip Angle (°)	Field Strength (nT)
	IGRF2015	10/4/2017	9.77	65.59	51,479.50414303

<b>Design</b>	Design #1			
---------------	-----------	--	--	--

<b>Audit Notes:</b>				
<b>Version:</b>	<b>Phase:</b>	PLAN	<b>Tie On Depth:</b>	0.0
<b>Vertical Section:</b>	<b>Depth From (TVD)</b>	<b>+N/-S</b>	<b>+E/-W</b>	<b>Direction</b>
	(usft)	(usft)	(usft)	(°)
	0.0	0.0	0.0	340.06

<b>Plan Sections</b>										
----------------------	--	--	--	--	--	--	--	--	--	--

Measured Depth (usft)	Inclination (°)	Azimuth (°)	Vertical Depth (usft)	+N/-S (usft)	+E/-W (usft)	Dogleg Rate (°/100usft)	Build Rate (°/100usft)	Turn Rate (°/100usft)	TFO (°)	Target
0.0	0.00	0.00	0.0	0.0	0.0	0.00	0.00	0.00	0.00	
200.0	0.00	0.00	200.0	0.0	0.0	0.00	0.00	0.00	0.00	
496.5	8.90	340.06	495.4	21.6	-7.8	3.00	3.00	0.00	340.06	
7,217.7	8.90	340.06	7,135.6	998.7	-362.4	0.00	0.00	0.00	0.00	
7,514.2	0.00	0.00	7,431.0	1,020.3	-370.2	3.00	-3.00	0.00	180.00	
9,684.2	0.00	0.00	9,581.0	1,020.3	-370.2	0.00	0.00	0.00	0.00	PBHL - CC Federal 04





# Well Planning Report



<b>Database:</b>	EDM 5000.1 Single User Db	<b>Local Co-ordinate Reference:</b>	Well CC Federal 0897-04-04E
<b>Company:</b>	Laramie Energy, LLC	<b>TVD Reference:</b>	well @ 8633.0usft (24' RKB)
<b>Project:</b>	Garfield County, CO	<b>MD Reference:</b>	well @ 8633.0usft (24' RKB)
<b>Site:</b>	CC 604-41-32 Pad	<b>North Reference:</b>	True
<b>Well:</b>	CC Federal 0897-04-04E	<b>Survey Calculation Method:</b>	Minimum Curvature
<b>Wellbore:</b>	Wellbore #1		
<b>Design:</b>	Design #1		

## Planned Survey

Measured Depth (usft)	Inclination (°)	Azimuth (°)	Vertical Depth (usft)	+N/-S (usft)	+E/-W (usft)	Vertical Section (usft)	Dogleg Rate (°/100usft)	Build Rate (°/100usft)	Turn Rate (°/100usft)
0.0	0.00	0.00	0.0	0.0	0.0	0.0	0.00	0.00	0.00
100.0	0.00	0.00	100.0	0.0	0.0	0.0	0.00	0.00	0.00
<b>KOP (Build 3° / 100')</b>									
200.0	0.00	0.00	200.0	0.0	0.0	0.0	0.00	0.00	0.00
300.0	3.00	340.06	300.0	2.5	-0.9	2.6	3.00	3.00	0.00
400.0	6.00	340.06	399.6	9.8	-3.6	10.5	3.00	3.00	0.00
<b>EOB @ 8.90° Inc. / 340.06° Azm</b>									
496.5	8.90	340.06	495.4	21.6	-7.8	23.0	3.00	3.00	0.00
500.0	8.90	340.06	498.8	22.1	-8.0	23.5	0.00	0.00	0.00
600.0	8.90	340.06	597.6	36.6	-13.3	39.0	0.00	0.00	0.00
700.0	8.90	340.06	696.4	51.2	-18.6	54.4	0.00	0.00	0.00
800.0	8.90	340.06	795.2	65.7	-23.8	69.9	0.00	0.00	0.00
900.0	8.90	340.06	894.0	80.2	-29.1	85.4	0.00	0.00	0.00
1,000.0	8.90	340.06	992.8	94.8	-34.4	100.8	0.00	0.00	0.00
1,100.0	8.90	340.06	1,091.6	109.3	-39.7	116.3	0.00	0.00	0.00
1,200.0	8.90	340.06	1,190.3	123.9	-44.9	131.8	0.00	0.00	0.00
1,300.0	8.90	340.06	1,289.1	138.4	-50.2	147.2	0.00	0.00	0.00
1,400.0	8.90	340.06	1,387.9	152.9	-55.5	162.7	0.00	0.00	0.00
1,500.0	8.90	340.06	1,486.7	167.5	-60.8	178.2	0.00	0.00	0.00
1,600.0	8.90	340.06	1,585.5	182.0	-66.0	193.6	0.00	0.00	0.00
1,700.0	8.90	340.06	1,684.3	196.5	-71.3	209.1	0.00	0.00	0.00
1,800.0	8.90	340.06	1,783.1	211.1	-76.6	224.6	0.00	0.00	0.00
1,900.0	8.90	340.06	1,881.9	225.6	-81.9	240.0	0.00	0.00	0.00
2,000.0	8.90	340.06	1,980.7	240.2	-87.1	255.5	0.00	0.00	0.00
2,100.0	8.90	340.06	2,079.5	254.7	-92.4	270.9	0.00	0.00	0.00
2,200.0	8.90	340.06	2,178.3	269.2	-97.7	286.4	0.00	0.00	0.00
2,300.0	8.90	340.06	2,277.1	283.8	-103.0	301.9	0.00	0.00	0.00
2,400.0	8.90	340.06	2,375.9	298.3	-108.2	317.3	0.00	0.00	0.00
2,500.0	8.90	340.06	2,474.7	312.8	-113.5	332.8	0.00	0.00	0.00
<b>9 5/8"</b>									
2,524.0	8.90	340.06	2,498.4	316.3	-114.8	336.5	0.00	0.00	0.00
2,600.0	8.90	340.06	2,573.5	327.4	-118.8	348.3	0.00	0.00	0.00
2,700.0	8.90	340.06	2,672.3	341.9	-124.1	363.7	0.00	0.00	0.00
2,800.0	8.90	340.06	2,771.1	356.5	-129.3	379.2	0.00	0.00	0.00
2,900.0	8.90	340.06	2,869.9	371.0	-134.6	394.7	0.00	0.00	0.00
3,000.0	8.90	340.06	2,968.7	385.5	-139.9	410.1	0.00	0.00	0.00
3,100.0	8.90	340.06	3,067.5	400.1	-145.2	425.6	0.00	0.00	0.00
3,200.0	8.90	340.06	3,166.3	414.6	-150.4	441.1	0.00	0.00	0.00
3,300.0	8.90	340.06	3,265.1	429.1	-155.7	456.5	0.00	0.00	0.00
3,400.0	8.90	340.06	3,363.9	443.7	-161.0	472.0	0.00	0.00	0.00
3,500.0	8.90	340.06	3,462.7	458.2	-166.3	487.4	0.00	0.00	0.00
3,600.0	8.90	340.06	3,561.5	472.8	-171.5	502.9	0.00	0.00	0.00
3,700.0	8.90	340.06	3,660.3	487.3	-176.8	518.4	0.00	0.00	0.00
3,800.0	8.90	340.06	3,759.1	501.8	-182.1	533.8	0.00	0.00	0.00
3,900.0	8.90	340.06	3,857.9	516.4	-187.4	549.3	0.00	0.00	0.00
4,000.0	8.90	340.06	3,956.7	530.9	-192.6	564.8	0.00	0.00	0.00
4,100.0	8.90	340.06	4,055.5	545.4	-197.9	580.2	0.00	0.00	0.00
4,200.0	8.90	340.06	4,154.3	560.0	-203.2	595.7	0.00	0.00	0.00
4,300.0	8.90	340.06	4,253.1	574.5	-208.5	611.2	0.00	0.00	0.00
4,400.0	8.90	340.06	4,351.9	589.1	-213.7	626.6	0.00	0.00	0.00
4,500.0	8.90	340.06	4,450.6	603.6	-219.0	642.1	0.00	0.00	0.00
4,600.0	8.90	340.06	4,549.4	618.1	-224.3	657.6	0.00	0.00	0.00
4,700.0	8.90	340.06	4,648.2	632.7	-229.6	673.0	0.00	0.00	0.00



# Well Planning Report



<b>Database:</b>	EDM 5000.1 Single User Db	<b>Local Co-ordinate Reference:</b>	Well CC Federal 0697-04-04E
<b>Company:</b>	Laramie Energy, LLC	<b>TVD Reference:</b>	well @ 8633.0usft (24' RKB)
<b>Project:</b>	Garfield County, CO	<b>MD Reference:</b>	well @ 8633.0usft (24' RKB)
<b>Site:</b>	CC 604-41-32 Pad	<b>North Reference:</b>	True
<b>Well:</b>	CC Federal 0697-04-04E	<b>Survey Calculation Method:</b>	Minimum Curvature
<b>Wellbore:</b>	Wellbore #1		
<b>Design:</b>	Design #1		

## Planned Survey

Measured Depth (usft)	Inclination (°)	Azimuth (°)	Vertical Depth (usft)	+N/-S (usft)	+E/-W (usft)	Vertical Section (usft)	Dogleg Rate (°/100usft)	Build Rate (°/100usft)	Turn Rate (°/100usft)
4,800.0	8.90	340.06	4,747.0	647.2	-234.8	688.5	0.00	0.00	0.00
<b>Wasatch 'G' Sand</b>									
4,834.4	8.90	340.06	4,781.0	652.2	-236.6	693.8	0.00	0.00	0.00
4,900.0	8.90	340.06	4,845.8	661.7	-240.1	704.0	0.00	0.00	0.00
5,000.0	8.90	340.06	4,944.6	676.3	-245.4	719.4	0.00	0.00	0.00
5,100.0	8.90	340.06	5,043.4	690.8	-250.7	734.9	0.00	0.00	0.00
5,200.0	8.90	340.06	5,142.2	705.4	-255.9	750.3	0.00	0.00	0.00
5,300.0	8.90	340.06	5,241.0	719.9	-261.2	765.8	0.00	0.00	0.00
5,400.0	8.90	340.06	5,339.8	734.4	-266.5	781.3	0.00	0.00	0.00
5,500.0	8.90	340.06	5,438.6	749.0	-271.8	796.7	0.00	0.00	0.00
5,600.0	8.90	340.06	5,537.4	763.5	-277.0	812.2	0.00	0.00	0.00
5,700.0	8.90	340.06	5,636.2	778.0	-282.3	827.7	0.00	0.00	0.00
5,800.0	8.90	340.06	5,735.0	792.6	-287.6	843.1	0.00	0.00	0.00
5,900.0	8.90	340.06	5,833.8	807.1	-292.9	858.6	0.00	0.00	0.00
6,000.0	8.90	340.06	5,932.6	821.7	-298.1	874.1	0.00	0.00	0.00
6,100.0	8.90	340.06	6,031.4	836.2	-303.4	889.5	0.00	0.00	0.00
6,200.0	8.90	340.06	6,130.2	850.7	-308.7	905.0	0.00	0.00	0.00
6,300.0	8.90	340.06	6,229.0	865.3	-313.9	920.5	0.00	0.00	0.00
6,400.0	8.90	340.06	6,327.8	879.8	-319.2	935.9	0.00	0.00	0.00
6,500.0	8.90	340.06	6,426.6	894.3	-324.5	951.4	0.00	0.00	0.00
<b>Ohio Creek</b>									
6,555.1	8.90	340.06	6,481.0	902.3	-327.4	959.9	0.00	0.00	0.00
6,600.0	8.90	340.06	6,525.4	908.9	-329.8	966.9	0.00	0.00	0.00
6,700.0	8.90	340.06	6,624.2	923.4	-335.0	982.3	0.00	0.00	0.00
<b>Williams Fork</b>									
6,706.9	8.90	340.06	6,631.0	924.4	-335.4	983.4	0.00	0.00	0.00
6,800.0	8.90	340.06	6,723.0	938.0	-340.3	997.8	0.00	0.00	0.00
6,900.0	8.90	340.06	6,821.8	952.5	-345.6	1,013.2	0.00	0.00	0.00
7,000.0	8.90	340.06	6,920.6	967.0	-350.9	1,028.7	0.00	0.00	0.00
7,100.0	8.90	340.06	7,019.4	981.6	-356.1	1,044.2	0.00	0.00	0.00
7,200.0	8.90	340.06	7,118.2	996.1	-361.4	1,059.6	0.00	0.00	0.00
<b>Drop 3° / 100'</b>									
7,217.7	8.90	340.06	7,135.8	998.7	-362.4	1,062.4	0.00	0.00	0.00
7,300.0	6.43	340.06	7,217.2	1,009.0	-366.1	1,073.4	3.00	-3.00	0.00
7,400.0	3.43	340.06	7,316.8	1,017.1	-369.0	1,081.9	3.00	-3.00	0.00
7,500.0	0.43	340.06	7,416.8	1,020.2	-370.2	1,085.3	3.00	-3.00	0.00
<b>EOD @ Vertical - TOG</b>									
7,514.2	0.00	0.00	7,431.0	1,020.3	-370.2	1,085.4	3.00	-3.00	0.00
7,600.0	0.00	0.00	7,516.8	1,020.3	-370.2	1,085.4	0.00	0.00	0.00
7,700.0	0.00	0.00	7,616.8	1,020.3	-370.2	1,085.4	0.00	0.00	0.00
7,800.0	0.00	0.00	7,716.8	1,020.3	-370.2	1,085.4	0.00	0.00	0.00
7,900.0	0.00	0.00	7,816.8	1,020.3	-370.2	1,085.4	0.00	0.00	0.00
8,000.0	0.00	0.00	7,916.8	1,020.3	-370.2	1,085.4	0.00	0.00	0.00
8,100.0	0.00	0.00	8,016.8	1,020.3	-370.2	1,085.4	0.00	0.00	0.00
8,200.0	0.00	0.00	8,116.8	1,020.3	-370.2	1,085.4	0.00	0.00	0.00
8,300.0	0.00	0.00	8,216.8	1,020.3	-370.2	1,085.4	0.00	0.00	0.00
8,400.0	0.00	0.00	8,316.8	1,020.3	-370.2	1,085.4	0.00	0.00	0.00
8,500.0	0.00	0.00	8,416.8	1,020.3	-370.2	1,085.4	0.00	0.00	0.00
8,600.0	0.00	0.00	8,516.8	1,020.3	-370.2	1,085.4	0.00	0.00	0.00
8,700.0	0.00	0.00	8,616.8	1,020.3	-370.2	1,085.4	0.00	0.00	0.00
8,800.0	0.00	0.00	8,716.8	1,020.3	-370.2	1,085.4	0.00	0.00	0.00
8,900.0	0.00	0.00	8,816.8	1,020.3	-370.2	1,085.4	0.00	0.00	0.00
9,000.0	0.00	0.00	8,916.8	1,020.3	-370.2	1,085.4	0.00	0.00	0.00
9,100.0	0.00	0.00	9,016.8	1,020.3	-370.2	1,085.4	0.00	0.00	0.00



# Well Planning Report



<b>Database:</b>	EDM 5000.1 Single User Db	<b>Local Co-ordinate Reference:</b>	Well CC Federal 0697-04-04E
<b>Company:</b>	Laramie Energy, LLC	<b>TVD Reference:</b>	well @ 8633.0usft (24' RKB)
<b>Project:</b>	Garfield County, CO	<b>MD Reference:</b>	well @ 8633.0usft (24' RKB)
<b>Site:</b>	CC 604-41-32 Pad	<b>North Reference:</b>	True
<b>Well:</b>	CC Federal 0697-04-04E	<b>Survey Calculation Method:</b>	Minimum Curvature
<b>Wellbore:</b>	Wellbore #1		
<b>Design:</b>	Design #1		

Planned Survey									
Measured Depth (usft)	Inclination (°)	Azimuth (°)	Vertical Depth (usft)	+N/-S (usft)	+E/-W (usft)	Vertical Section (usft)	Dogleg Rate (°/100usft)	Build Rate (°/100usft)	Turn Rate (°/100usft)
<b>Cameo</b>									
9,164.2	0.00	0.00	9,081.0	1,020.3	-370.2	1,085.4	0.00	0.00	0.00
9,200.0	0.00	0.00	9,116.8	1,020.3	-370.2	1,085.4	0.00	0.00	0.00
9,300.0	0.00	0.00	9,216.8	1,020.3	-370.2	1,085.4	0.00	0.00	0.00
<b>Base Cameo Coal</b>									
9,394.2	0.00	0.00	9,311.0	1,020.3	-370.2	1,085.4	0.00	0.00	0.00
9,400.0	0.00	0.00	9,316.8	1,020.3	-370.2	1,085.4	0.00	0.00	0.00
<b>Rollins</b>									
9,414.2	0.00	0.00	9,331.0	1,020.3	-370.2	1,085.4	0.00	0.00	0.00
9,500.0	0.00	0.00	9,416.8	1,020.3	-370.2	1,085.4	0.00	0.00	0.00
9,600.0	0.00	0.00	9,516.8	1,020.3	-370.2	1,085.4	0.00	0.00	0.00
<b>TD @ 9664.2' MD / 9581.0' TVD</b>									
9,664.2	0.00	0.00	9,581.0	1,020.3	-370.2	1,085.4	0.00	0.00	0.00

Design Targets									
Target Name	Dip Angle (°)	Dip Dir. (°)	TVD (usft)	+N/-S (usft)	+E/-W (usft)	Northing (usft)	Easting (usft)	Latitude	Longitude
- hit/miss target									
- Shape									
PBHL - CC Federal 0697	0.00	0.00	9,581.0	1,020.3	-370.2	1,640,460.40	2,233,195.94	39.560333	-108.220124
- plan hits target center									
- Circle (radius 50.0)									

Casing Points					
Measured Depth (usft)	Vertical Depth (usft)	Name	Casing Diameter (")	Hole Diameter (")	
2,524.0	2,498.4	9 5/8"	9-5/8	14-3/4	

Formations						
Measured Depth (usft)	Vertical Depth (usft)	Name	Lithology	Dip (°)	Dip Direction (°)	
4,834.4	4,781.0	Wasatch 'G' Sand				
6,555.1	6,481.0	Ohio Creek				
6,706.9	6,631.0	Williams Fork				
7,514.2	7,431.0	TOG				
9,164.2	9,081.0	Cameo				
9,394.2	9,311.0	Base Cameo Coal				
9,414.2	9,331.0	Rollins				





## Well Planning Report



<b>Database:</b>	EDM 5000.1 Single User Db	<b>Local Co-ordinate Reference:</b>	Well CC Federal 0697-04-04E
<b>Company:</b>	Laramie Energy, LLC	<b>TVD Reference:</b>	well @ 8633.0usft (24' RKB)
<b>Project:</b>	Garfield County, CO	<b>MD Reference:</b>	well @ 8633.0usft (24' RKB)
<b>Site:</b>	CC 604-41-32 Pad	<b>North Reference:</b>	True
<b>Well:</b>	CC Federal 0697-04-04E	<b>Survey Calculation Method:</b>	Minimum Curvature
<b>Wellbore:</b>	Wellbore #1		
<b>Design:</b>	Design #1		

### Plan Annotations

Measured Depth (usft)	Vertical Depth (usft)	Local Coordinates		Comment
		+N/-S (usft)	+E/-W (usft)	
200.0	200.0	0.0	0.0	KOP (Build 3" / 100')
496.5	495.4	21.6	-7.8	EOB @ 8.90° Inc. / 340.06° Azm
7,217.7	7,135.6	998.7	-362.4	Drop 3" / 100'
7,514.2	7,431.0	1,020.3	-370.2	EOD @ Vertical
9,664.2	9,581.0	1,020.3	-370.2	TD @ 9664.2' MD / 9581.0' TVD