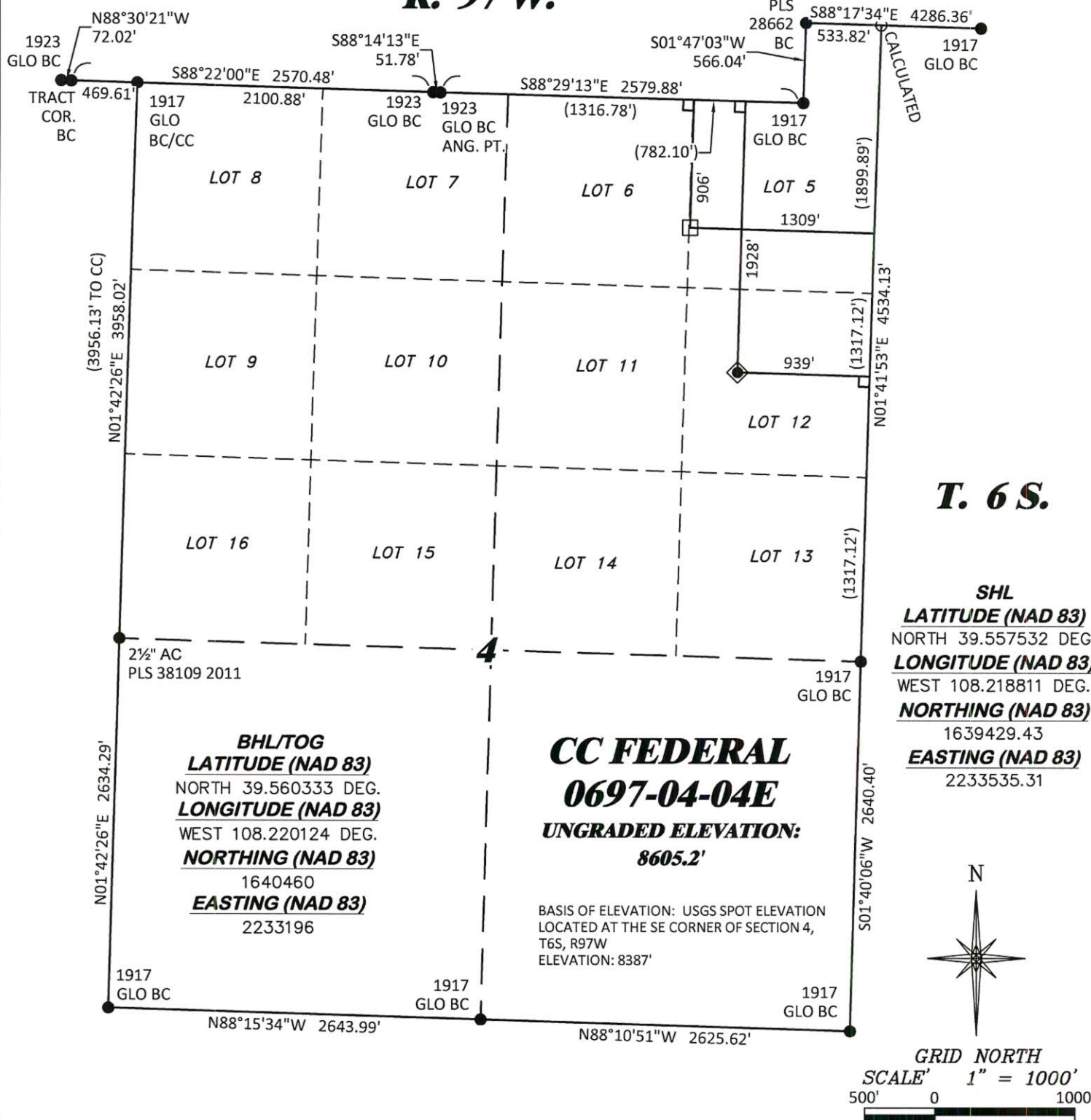


R. 97 W.



**DRG** RIFFIN & ASSOCIATES, INC.  
(307) 362-5028 1414 ELK ST., ROCK SPRINGS, WY 82901

DRAWN: 9/20/2017 - TCM

SCALE: 1" = 1000'

REVISED: N/A - .

DRG JOB No. 21347

A7-04-04E

**PLAT OF DRILLING LOCATION IN**  
**LOT 12, SECTION 4, FOR**  
**LARAMIE ENERGY LLC**

**1928' F/NL, & 939' F/EL, SECTION 4,**  
**T. 6 S., R. 97 W., 6TH P.M.,**  
**GARFIELD COUNTY, COLORADO**